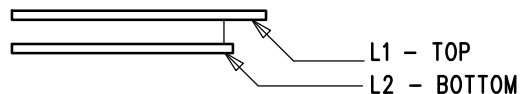


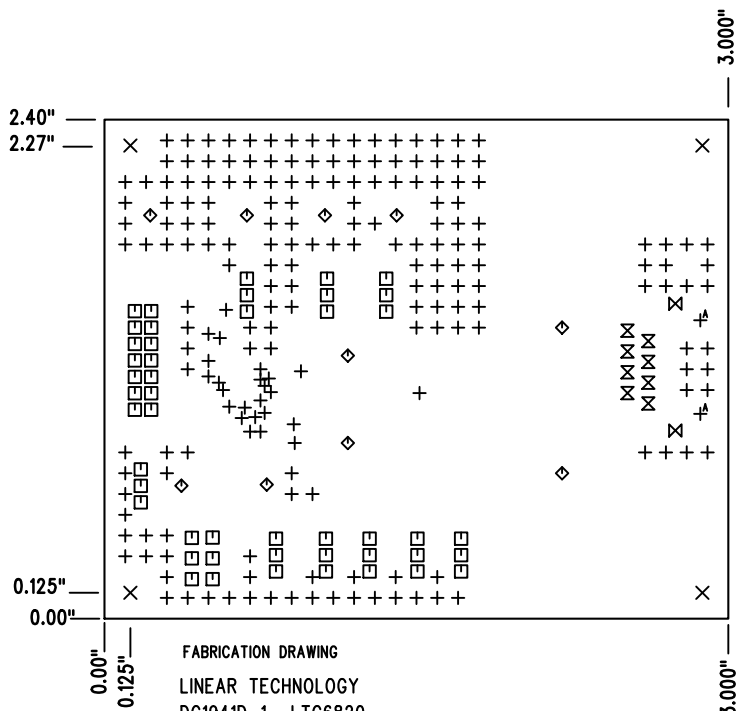
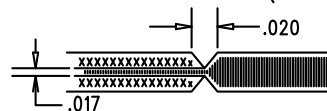
REVISION HISTORY				
ECO	REV	DESCRIPTION	APP. ENG.	DATE
-	1	PRODUCTION	CUYLER L.	02-11-16

## LAYER STRUCTURE




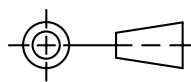
## NOTES: UNLESS OTHERWISE SPECIFIED

- FAB PER IPC-A-600.
- MATERIAL: -LEAD FREE ASSEMBLY COMPLIANT, ISOLA FR-370HR OR EQUIVALENT.  
-FINISHED THICKNESS TO BE 0.062" +/- .005"  
-TOTAL OF 2 LAYERS WITH 2 OZ. CU ON THE LAYERS  
  
-FLAMMABILITY RATING: 94 V-0 MINIMUM.
- SIZE: CUT TO DIMENSIONS AND TOLERANCES SHOWN.  
0.00" ARE PRIMARY DATUMS.
- DRILLING: -DRILL HOLES PER SCHEDULE. PLATE THROUGH HOLES WITH COPPER, 0.001" THICK MIN.  
-ALL HOLE SIZES ARE SPECIFIED AFTER PLATING.  
-HOLE LOCATION TOLERANCES ARE +/-0.003" IN RELATION TO CENTER
- FINISH: -SMOBC USING LPI BOTH SIDES, COLOR GREEN.  
-GOLD IMMERSION BOTH SIDES.  
-FOR SILKSCREENS: USE WHITE NON-CONDUCTIVE INK.
- DO NOT ALTER ARTWORK e.g. TO ADD LOGO OR DATE CODE.  
PAD SIZE CAN BE MODIFIED TO MEET END FINISH.
- PCBS ARE TO BE RoHS COMPLIANT.
- SCORING FOR PANELIZED PCB (PRODUCTION FAB ONLY):



FABRICATION DRAWING  
LINEAR TECHNOLOGY  
DC1941D-1- LTC6820  
isoSPI TWO WIRE SERIAL INTERFACE  
DATE: 02-11-1016

SIZE	QTY	SYM	PLATED	TOL
0.3048	200	+	YES	+/-0.003
4.7498	4	×	NO	+/-0.003
0.889	47	□	YES	+/-0.003
1.651	10	◇	YES	+/-0.003
1.016	8	⊗	YES	+/-0.003
1.6764	2	⊗	YES	+/-0.003
3.2512	2	⊕ <sup>A</sup>	NO	+/-0.003

UNLESS OTHERWISE SPECIFIED		APPROVALS		 1630 MCCARTHY BLVD MILPITAS, CA 95035 PH: (408)432-1900 www.linear.com LTC CONFIDENTIAL- FOR CUSTOMER USE ONLY	
DIMENSIONS ARE IN INCHES		PCB DES.	AK		
TOLERANCES:		APP ENG.	CUYLER L.	TITLE: FABRICATION DRAWING	
0.XX" = ±0.01"				isoSPI TWO WIRE SERIAL INTERFACE	
0.XXX" = ±0.005"					
INTERPRET DIM AND TOL				SIZE	IC NO. LTC6820
PER ASME Y14.5M-1994				N/A	DEMO CIRCUIT 1941D
THIRD ANGLE PROJECTION				SCALE = NONE	REV 1
		FILENAME: DC1941D-1.PCB		SHT 1 OF 1	