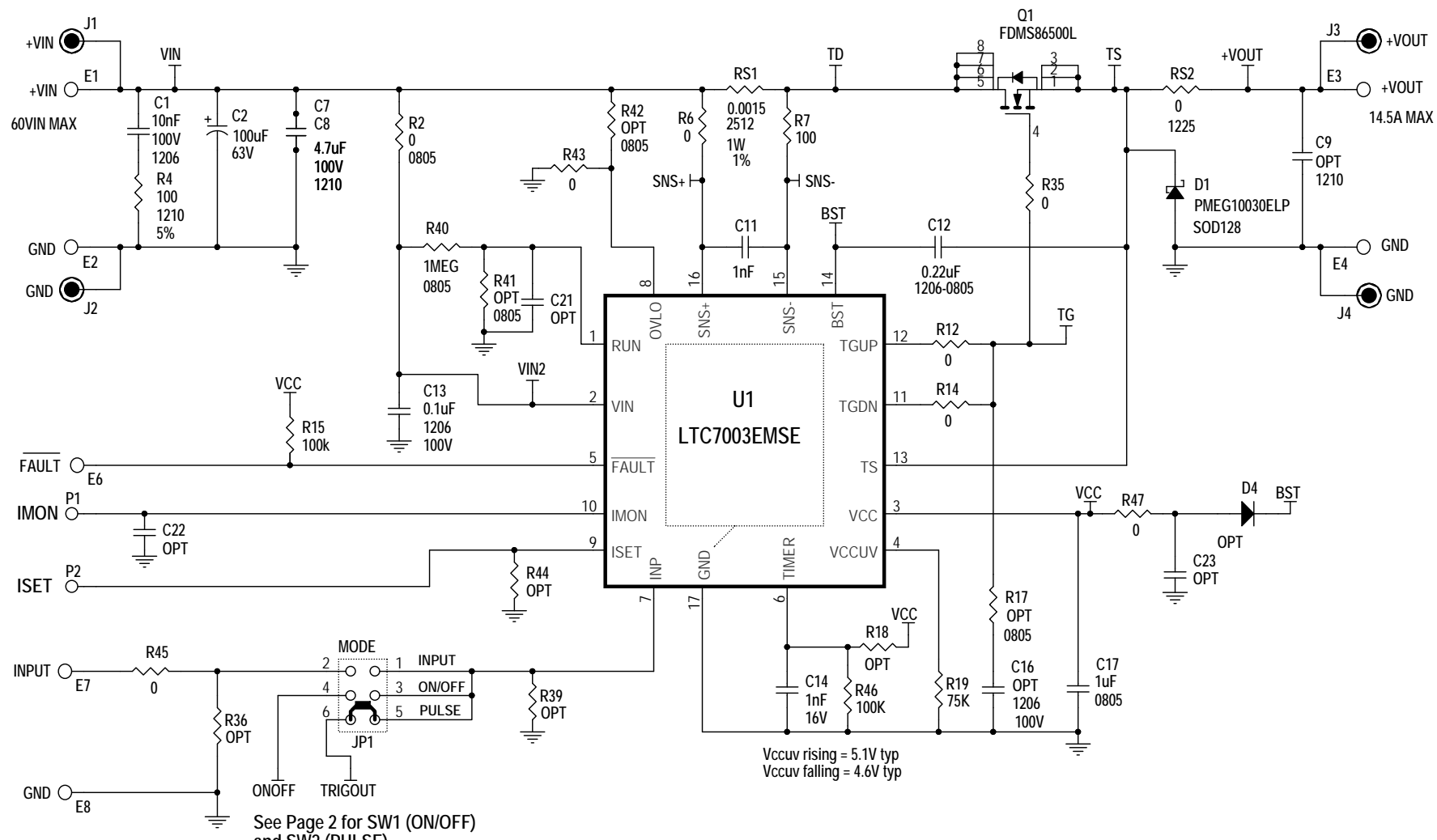


REVISION HISTORY				
ECO	REV	DESCRIPTION	APPROVED	DATE
-	1	PRODUCTION	HTOO K.	10-10-17



See Page 2 for SW1 (ON/OFF) and SW2 (PULSE)

Note: OPT = (OPT) = Optional = Not Used

Note: Unless otherwise specified:
 All resistors are in ohms, 1%, 0603.
 All capacitors are in microfarads 0603.
 All capacitors are 25V.
 1/16W = 0402, 1/10W = 0603, 1/8W = 0805,
 1/4W = 1206, 1/2W = 1210, 1W = 2512.

4.7uF 100V Murata GRM32DC72A475ME01 (1210, X7R, -75% at 60V).
 100uF 63V Würth Electronic 860040775006 (10x12.5mm, 640mA@100kHz@105°C, 0.340hm@100kHz)
 5.1V Zener On Semi MMSZ5V1T1.
 0 Ohm 1225 TEPRO RN5326
 100ohm 1210 NIC NRCP25J101TRF (0.5M, 400W for 0.1ms)
 Fairchild FDMS86500L (60, 3.7mOh max and 117nCtyp at 10V)
 0.0015ohms 1W Panasonic ERJ-M1WTF1M5U (2512).

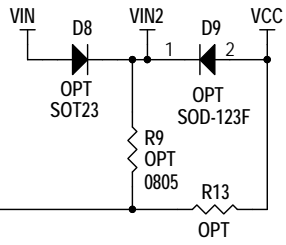
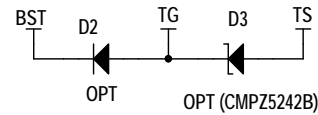
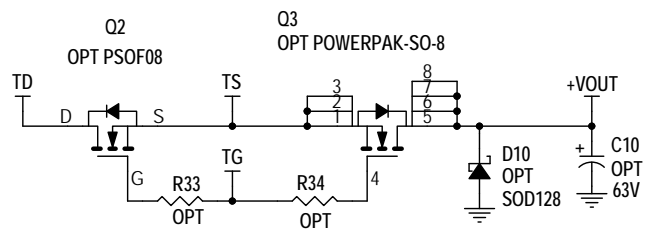
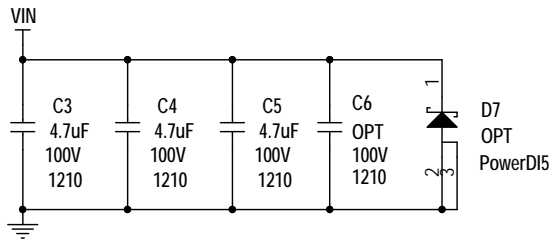
CUSTOMER NOTICE

LINEAR TECHNOLOGY HAS MADE A BEST EFFORT TO DESIGN A CIRCUIT THAT MEETS CUSTOMER-SUPPLIED SPECIFICATIONS; HOWEVER, IT REMAINS THE CUSTOMER'S RESPONSIBILITY TO VERIFY PROPER AND RELIABLE OPERATION IN THE ACTUAL APPLICATION. COMPONENT SUBSTITUTION AND PRINTED CIRCUIT BOARD LAYOUT MAY SIGNIFICANTLY AFFECT CIRCUIT PERFORMANCE OR RELIABILITY. CONTACT LINEAR TECHNOLOGY APPLICATIONS ENGINEERING FOR ASSISTANCE.

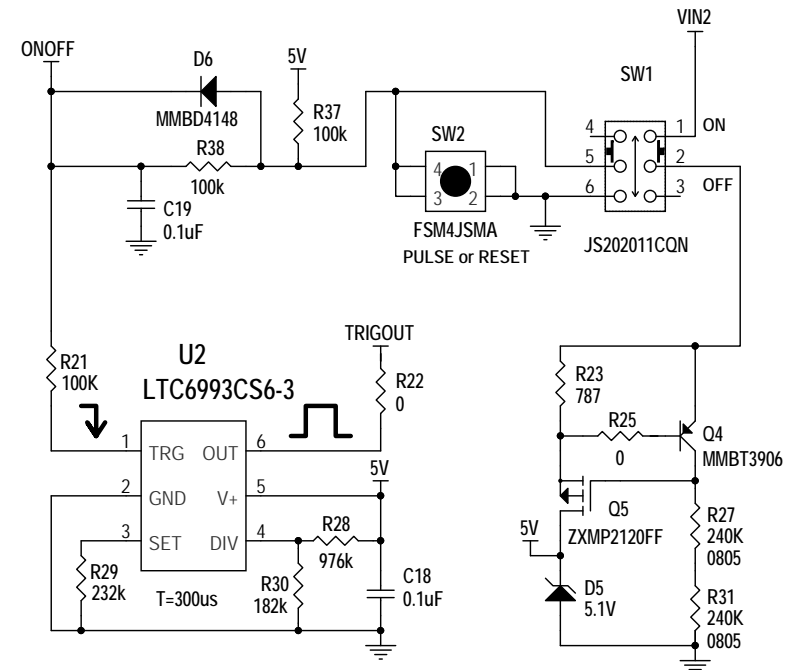
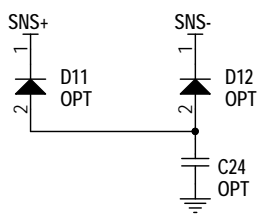
THIS CIRCUIT IS PROPRIETARY TO LINEAR TECHNOLOGY AND SUPPLIED FOR USE WITH LINEAR TECHNOLOGY PARTS.

APPROVALS	
PCB DES.	LT
APP ENG.	HTOO K.
SCALE	NONE

	1630 McCarthy Blvd. Milpitas, CA 95035 Phone: (408)432-1900 www.linear.com Fax: (408)434-0507 LTC Confidential-For Customer Use Only	
	TITLE: SCHEMATIC	
	FAST 60V PROTECTED HIGH-SIDE NMOS STATIC SWITCH DRIVER	
SIZE	IC NO.	REV.
N/A	LTC7003EMSE DC2749A	1
DATE:	Tuesday, October 10, 2017	SHEET 1 OF 2



AUX_VCC E5



OPTIONAL ON/OFF and SINGLE SHOT

CUSTOMER NOTICE

LINEAR TECHNOLOGY HAS MADE A BEST EFFORT TO DESIGN A CIRCUIT THAT MEETS CUSTOMER-SUPPLIED SPECIFICATIONS; HOWEVER, IT REMAINS THE CUSTOMER'S RESPONSIBILITY TO VERIFY PROPER AND RELIABLE OPERATION IN THE ACTUAL APPLICATION. COMPONENT SUBSTITUTION AND PRINTED CIRCUIT BOARD LAYOUT MAY SIGNIFICANTLY AFFECT CIRCUIT PERFORMANCE OR RELIABILITY. CONTACT LINEAR TECHNOLOGY APPLICATIONS ENGINEERING FOR ASSISTANCE.

THIS CIRCUIT IS PROPRIETARY TO LINEAR TECHNOLOGY AND SUPPLIED FOR USE WITH LINEAR TECHNOLOGY PARTS.

APPROVALS	
PCB DES.	LT
APP ENG.	HT00 K.
SCALE = NONE	

		1630 McCarthy Blvd. Milpitas, CA 95035 Phone: (408)432-1900 www.linear.com Fax: (408)434-0507 LTC Confidential-For Customer Use Only	
		TITLE: SCHEMATIC FAST 60V PROTECTED HIGH-SIDE NMOS STATIC SWITCH DRIVER	
SIZE	IC NO.	LTC7003EMSE DC2749A	
N/A		REV.	1
DATE:	Tuesday, October 10, 2017	SHEET 2 OF 2	