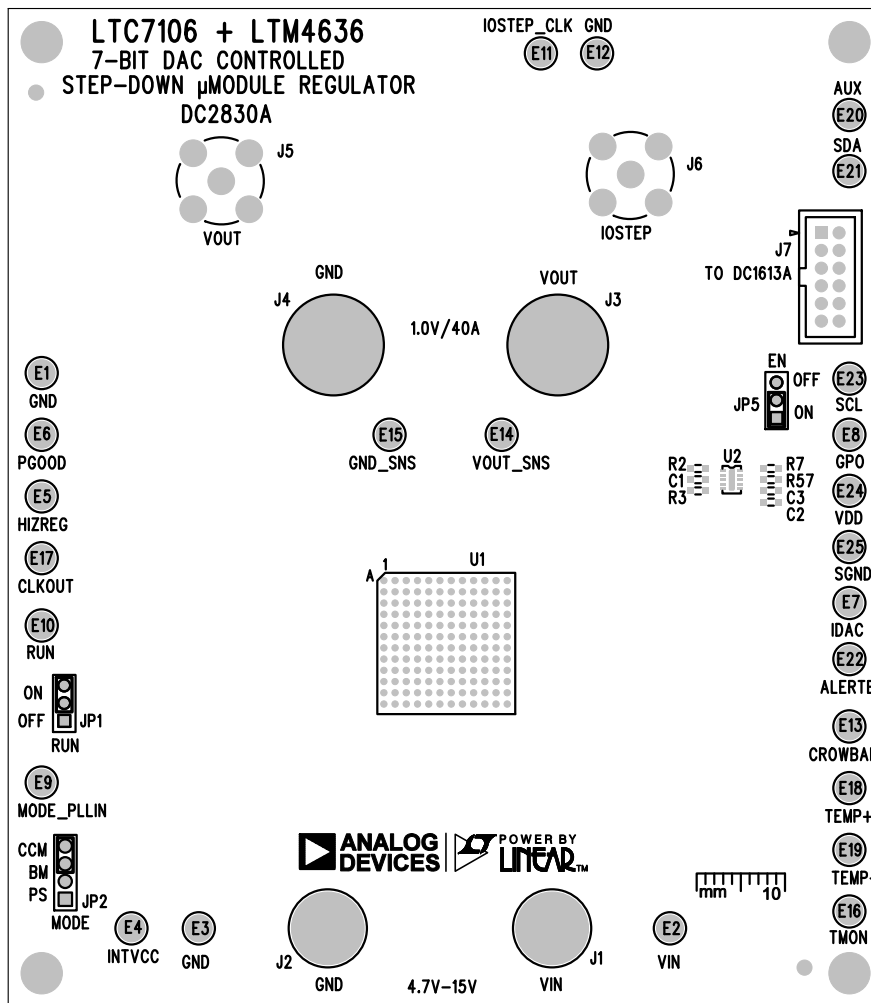
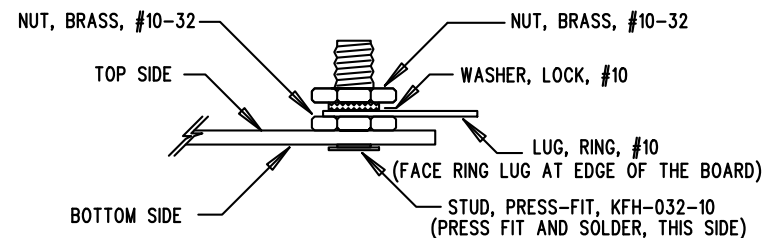
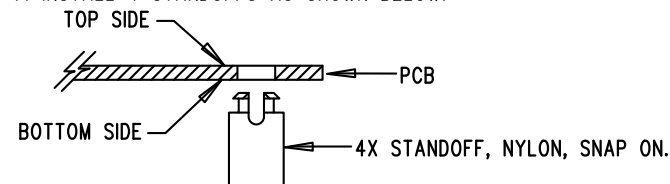




REVISION HISTORY				
ECO	REV	DESCRIPTION	APP. ENG.	DATE
-	1	PRODUCTION	HW	02-28-18



## NOTES: UNLESS OTHERWISE SPECIFIED

1. WORKMANSHIP SHALL BE IN ACCORDANCE WITH IPC-A-610.
2. ASSEMBLY PROCESS SHALL INCLUDE: REFLOW SOLDER TOP SIDE SMD. MAXIMUM SOLDER TEMPERATURE IS 240 DEGREES CELSIUS.
3. PARTS TO OMIT WILL BE SPECIFIED ON THE BILL OF MATERIALS. LOCATIONS OF OMITTED PARTS SHALL BE FREE OF SOLDER. MASK THE SOLDER STENCIL WHERE SMT PARTS ARE OMITTED.
4. INSTALL SHUNTS AS SHOWN ON ASSY DRAWING.
5. DEPANELIZE BOARDS AFTER ASSEMBLY AND ROUTE-OUT THE BREAKOUT TABS ON FOUR SIDES OF THE BOARD EDGE.
6. DO NOT APPLY ANY KIND OF ASSEMBLY STAMP OR QA STAMP TO ANY BOARD.
7. INSTALL 4 STANDOFFS AS SHOWN BELOW:



APPROVALS		 ANALOG DEVICES		 POWER BY LINEAR™		www.linear.com	
PCB DES.	LT	FOR ADI CUSTOMER USE ONLY					
APP ENG.	HW	TITLE: TOP ASSEMBLY DRAWING					
		7-BIT DAC CONTROLLED					
		STEP-DOWN $\mu$ MODULE REGULATOR					
		SIZE N/A	IC NO. LTC7106EDDB+LTM4636EY DC2830A				REV. 1
SCALE = NONE		FILENAME: DC2830A-1.PCB				SHT 1 OF 2	