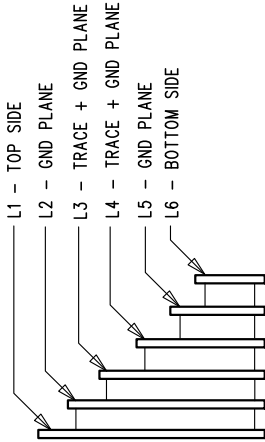


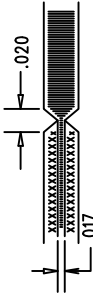
REVISION HISTORY			
ECO	REV	DESCRIPTION	APP. ENG.
-	3	PRODUCTION	Charlie
			9-2-15

LAYER STRUCTURE

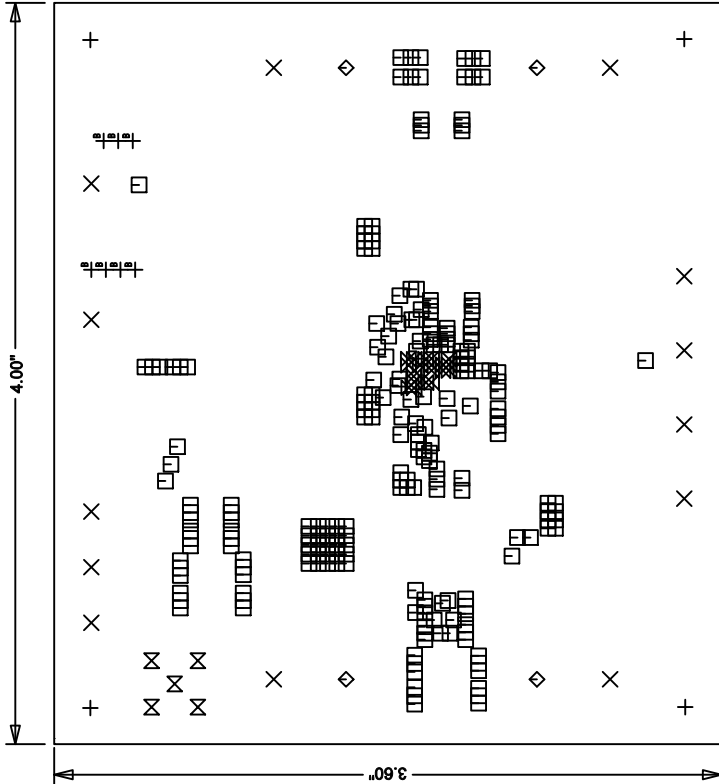


NOTES: UNLESS OTHERWISE SPECIFIED

1. FAB PER IPC-A-600.
2. MATERIAL: -LEAD FREE ASSEMBLY COMPLIANT, ISOLA FR-370HR OR EQUIVALENT.
-FINISHED THICKNESS TO BE 0.062" +/- .005"
-TOTAL OF 6 LAYERS WITH 2 OZ. CU ON THE OUTER LAYERS AND 1 OZ. CU ON THE INNER LAYERS.
-FLAMMABILITY RATING: 94 V-0 MINIMUM.
3. SIZE: CUT TO DIMENSIONS AND TOLERANCES SHOWN.
0.00 ARE PRIMARY DATUMS.
4. DRILLING: -DRILL HOLES PER SCHEDULE. PLATE THROUGH HOLES WITH COPPER, 0.001" THICK MIN.
-ALL HOLE SIZES ARE SPECIFIED AFTER PLATING.
-HOLE LOCATION TOLERANCES ARE +/-0.003" IN RELATION TO CENTER
5. FINISH: -SNOBC USING LPI BOTH SIDES, COLOR GREEN.
-GOLD IMMERSION BOTH SIDES.
-FOR SILKSCREENS: USE WHITE NON-CONDUCTIVE INK.
6. DO NOT ALTER ARTWORK e.g. TO ADD LOGO OR DATE CODE.
7. DESIGN HAS SOLDER MASK DEFINED PADS ON U1.
U1 SOLDER MASK SIZE IS 25 MIL AND PAD SIZE IS 29 MIL.
DON'T CHANGE PAD SIZE OR SOLDER MASK SIZE.
8. PCBs ARE TO BE RoHS COMPLIANT.
9. SCORING FOR PANELIZED PCB:



UNLESS OTHERWISE SPECIFIED DIMENSIONS ARE IN INCHES TOLERANCES: 0.XX" = ±0.01" 0.XXX" = ±0.005" INTERPRET DIM AND TOL PER ASME Y14.5M-1994 THIRD ANGLE PROJECTION		APPROVALS		LINEAR TECHNOLOGY 1630 MCCARTHY BLVD MILPITAS, CA 95035 PH: (408)432-1900 WWW.LINEAR.COM FOR CUSTOMER USE ONLY			
		PCB DES.	HZ	APP ENG.	Charlie	TITLE: FABRICATION DRAWING	
						HIGH EFFICIENCY STEP-DOWN CONVERTER WITH INTEGRATED FETs AND VERY LOW DCR INDUCTOR	
						SIZE	IC NO. LTC7130EY
						N/A	REV 3
						DEMO CIRCUIT 2341A	
		SCALE = NONE		FILENAME: DC2341A-2.PCB		SHT 1 OF 1	



SIZE	QTY	SYM	PLATED	TOL
0.187	4	+	YES	+/-0.003
0.09528	13	X	YES	+/-0.003
0.012	218	□	YES	+/-0.003
0.205	4	◇	YES	+/-0.003
0.008	20	⊗	YES	+/-0.003
0.055	5	⊗	YES	+/-0.003
0.03543	7	⊕	YES	+/-0.003