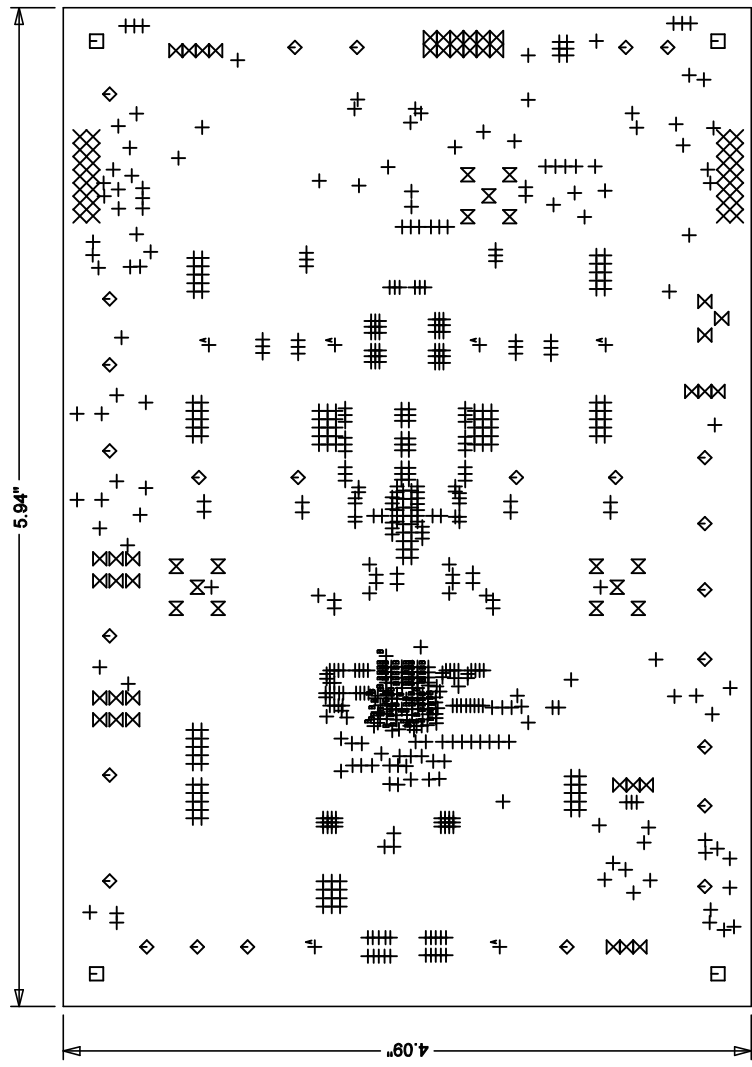
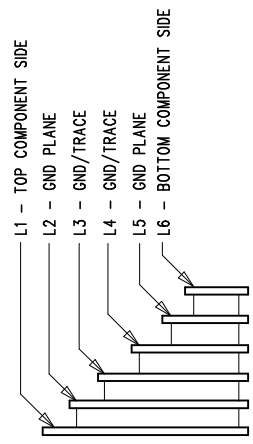


| REVISION HISTORY |     |             |                 |
|------------------|-----|-------------|-----------------|
| ECO              | REV | DESCRIPTION | APP. ENG. DATE  |
| -                | 1   | PRODUCTION  | CINA L. 6-19-18 |

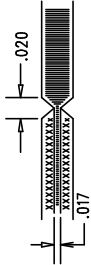


LAYER STRUCTURE



NOTES: UNLESS OTHERWISE SPECIFIED

- 1. FAB PER IPC-A-600.
- 2. MATERIAL: -LEAD FREE ASSEMBLY COMPLIANT, ISOLA FR-370HR OR EQUIVALENT
  - FINISHED THICKNESS TO BE 0.062 +/- .005
  - TOTAL OF 6 LAYERS WITH 2 OZ. CU ON ALL THE LAYERS
  - FLAMMABILITY RATING: 94 V-0 MINIMUM.
- 3. SIZE: CUT TO DIMENSIONS AND TOLERANCES SHOWN.
  - 0.00 ARE PRIMARY DATUMS.
- 4. DRILLING: -DRILL HOLES PER SCHEDULE. PLATE THROUGH HOLES WITH COPPER, 0.001" THICK MIN.
  - ALL HOLE SIZES ARE SPECIFIED AFTER PLATING.
  - HOLE LOCATION TOLERANCES ARE +/-0.003 IN RELATION TO CENTER
- 5. FINISH: -SNOBC USING LPI BOTH SIDES, COLOR GREEN.
  - GOLD IMMERSION BOTH SIDES.
  - FOR SILKSCREENS: USE WHITE NON-CONDUCTIVE INK.
- 6. DO NOT ALTER ARTWORK e.g. TO ADD LOGO OR DATE CODE.
- 7. DESIGN HAS SOLDER MASK DEFINED PADS ON U1.
  - U1 SOLDER MASK SIZE IS 0.016 INCH AND PAD SIZE IS 0.020 INCH.
  - DON'T CHANGE PAD SIZE OR SOLDER MASK SIZE.
- 8. PCBs ARE TO BE RoHS COMPLIANT.
- 9. SCORING FOR PANELIZED PCB:



10. FILL ALL VIAS WITH NON CONDUCTIVE MATERIALS.

| SIZE    | QTY | SYM | PLATED | TOL      |
|---------|-----|-----|--------|----------|
| 0.01    | 557 | +   | YES    | +/-0.003 |
| 0.03937 | 28  | X   | YES    | +/-0.003 |
| 0.187   | 4   | □   | YES    | +/-0.003 |
| 0.09528 | 26  | ◇   | YES    | +/-0.003 |
| 0.03543 | 40  | X   | YES    | +/-0.003 |
| 0.05512 | 15  | ⋈   | YES    | +/-0.07  |
| 0.215   | 6   | ⊕   | YES    | +/-0.003 |
| 0.006   | 77  | ⊕   | YES    | +/-0.005 |

UNLESS OTHERWISE SPECIFIED  
DIMENSIONS ARE IN INCHES  
TOLERANCES:  
0.XX = ±0.01  
0.XXX = ±0.005  
INTERPRET DIM AND TOL  
PER ASME Y14.5M-1994  
THIRD ANGLE PROJECTION

APPROVALS

|   |                        |
|---|------------------------|
| PCB DES.                                  | HZ                     |
| APP ENG.                                  | GL                     |
| TITLE: FABRICATION DRAWING                |                        |
| DUAL OUTPUT MONOLITHIC PSM BUCK CONVERTER |                        |
| SIZE                                      | IC NO. LTC7132EY       |
| REV                                       | N/A DEMO CIRCUIT 2666A |
| SCALE                                     | NONE                   |
| FILENAME:                                 | DC2666A-2.PCB          |
| SHT                                       | 1 OF 1                 |

1630 MCCARTHY BLVD  
MILPITAS, CA 95035  
PH: (408)332-1900  
WWW.AVNET.COM

FOR ADI CUSTOMER USE ONLY