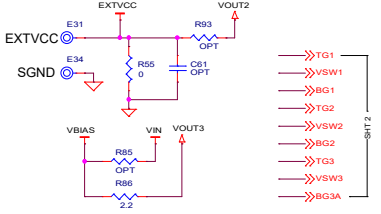
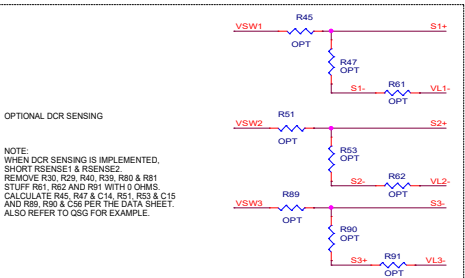
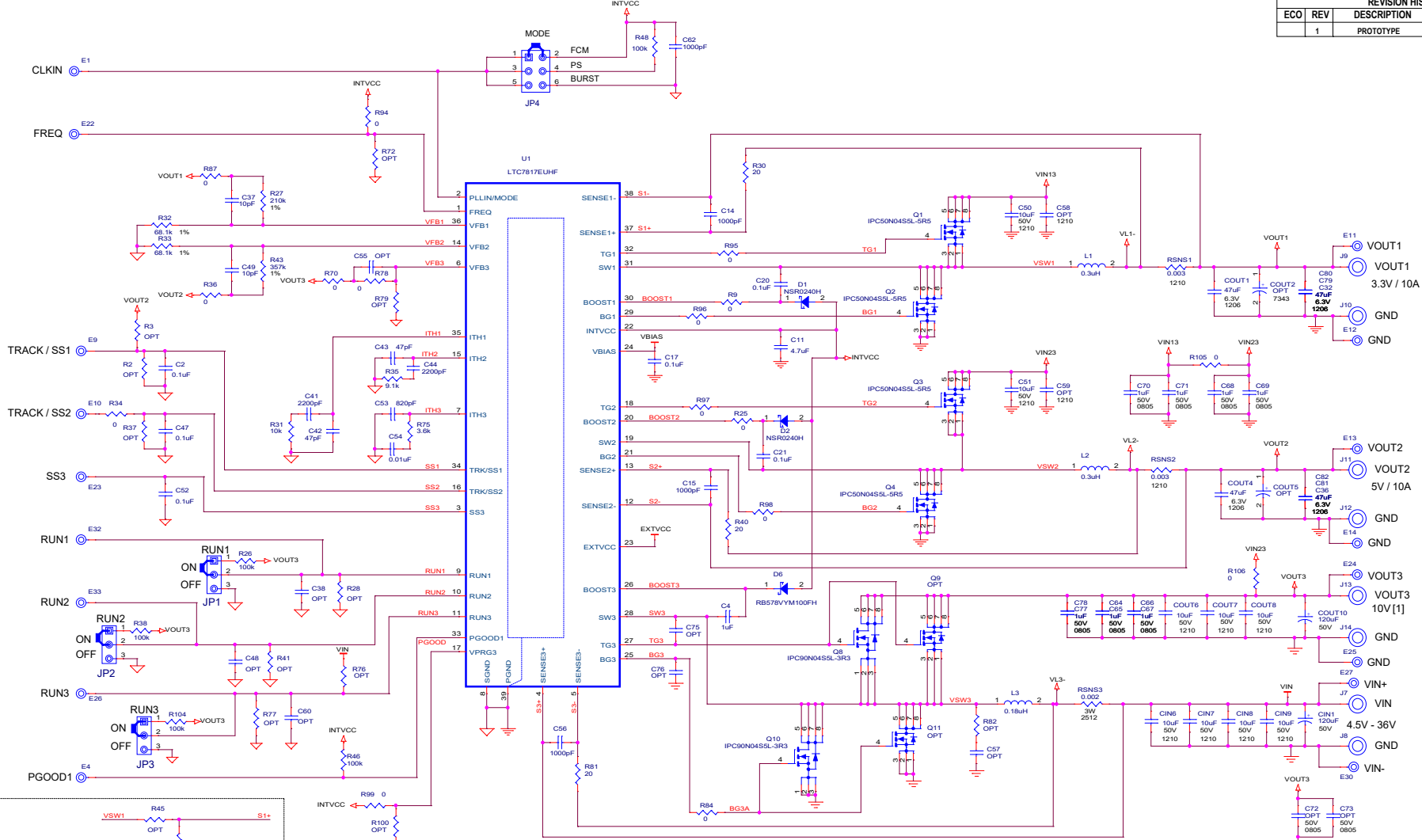
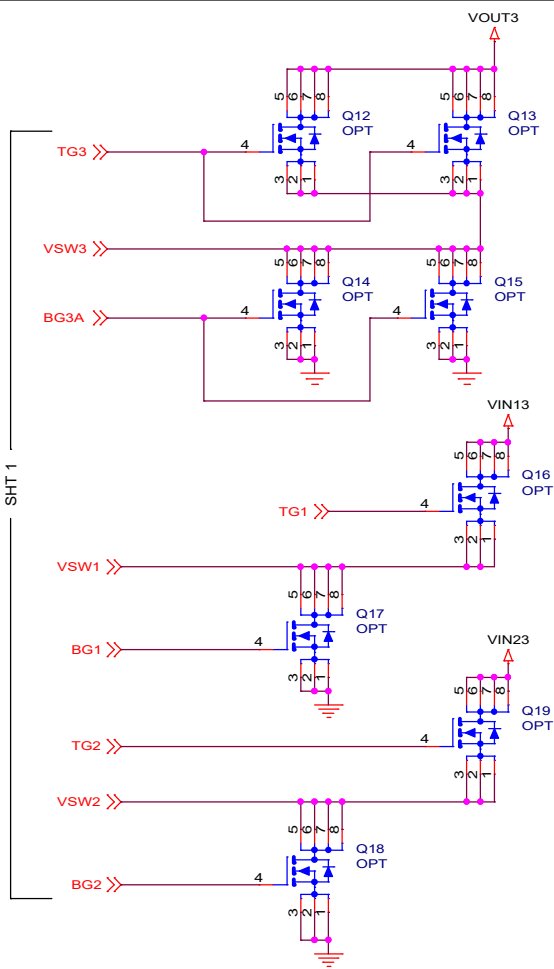


ECO		REV	DESCRIPTION	APPROVED	DATE
	1		PROTOTYPE	LJ	02/05/20



[1] OUTPUT 10V ONLY WHEN VIN < 10V, OTHERWISE VOUT3 FOLLOWS VIN.

CUSTOMER NOTICE		APPROVALS		 2555 AUGUSTINE DRIVE SANTA CLARA, CA 95054 www.analog.com
ANALOG DEVICES HAS MADE A BEST EFFORT TO DESIGN A CIRCUIT THAT MEETS CUSTOMER-SUPPLIED SPECIFICATIONS, HOWEVER, IT REMAINS THE CUSTOMER'S RESPONSIBILITY TO VERIFY PROPER AND HELDABLE OPERATION IN THE ACTUAL APPLICATION. COMPONENT SUBSTITUTION AND PRINTED CIRCUIT BOARD LAYOUT MAY SIGNIFICANTLY AFFECT CIRCUIT PERFORMANCE OR RELIABILITY. CONTACT ANALOG DEVICES APPLICATIONS ENGINEERING FOR ASSISTANCE.		PCB DES. LT APP ENH. LING J.	TITLE: SCHEMATIC LOW IQ HIGH FREQUENCY SYNCHRONOUS STEP-UP AND DUAL STEP-DOWN SUPPLIES	
THIS CIRCUIT IS PROPRIETARY TO ANALOG DEVICES AND SUPPLIED FOR USE WITH ANALOG DEVICES PARTS.		IC NO. LTC7817-EUHF SKU NO. DC3833A	SCHEMATIC NO. AND REVISION: 710-DC3033A_REV01	SIZE: NA DATE: Wednesday, February 05, 2020 SHEET 1 OF 2



PCA ADDITIONAL PARTS

MP1	STANDOFF,NYLON,SNAP-ON,0.50"
MP2	STANDOFF,NYLON,SNAP-ON,0.50"
MP3	STANDOFF,NYLON,SNAP-ON,0.50"
MP4	STANDOFF,NYLON,SNAP-ON,0.50"
LB1	BOARD S/N LABEL
STNCL1	TOOL, STENCIL, DC3033A REV01
PCB1	PCB, DC3033A REV01

CUSTOMER NOTICE

ANALOG DEVICES HAS MADE A BEST EFFORT TO DESIGN A CIRCUIT THAT MEETS CUSTOMER-SUPPLIED SPECIFICATIONS; HOWEVER, IT REMAINS THE CUSTOMER'S RESPONSIBILITY TO VERIFY PROPER AND RELIABLE OPERATION IN THE ACTUAL APPLICATION. COMPONENT SUBSTITUTION AND PRINTED CIRCUIT BOARD LAYOUT MAY SIGNIFICANTLY AFFECT CIRCUIT PERFORMANCE OR RELIABILITY. CONTACT ANALOG DEVICES APPLICATIONS ENGINEERING FOR ASSISTANCE.

THIS CIRCUIT IS PROPRIETARY TO ANALOG DEVICES AND SUPPLIED FOR USE WITH ANALOG DEVICES PARTS.

APPROVALS

PCB DES.	LT
APP ENG.	LING J.



2555 AUGUSTINE DRIVE
SANTA CLARA, CA 95054
www.analog.com

TITLE: SCHEMATIC
**LOW IQ HIGH FREQUENCY SYNCHRONOUS
STEP-UP AND DUAL STEP-DOWN SUPPLIES**

IC NO. LTC7817-EUHF
SKU NO. DC3033A

SCHEMATIC NO. AND REVISION:
710-DC3033A_REV01

SIZE: N/A | DATE: Wednesday, February 05, 2020 | SHEET 2 OF 2