

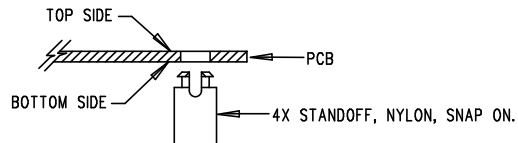
ANALOG DEVICES INC.
DC2897A REV 2 09-16-21

TOP SILKSCREEN
TOP ASSEMBLY

REVISION HISTORY				
ECO	REV	DESCRIPTION	APP. ENG.	DATE
-	2	PRODUCTION	MS	09-16-21

NOTES: UNLESS OTHERWISE SPECIFIED

1. WORKMANSHIP SHALL BE IN ACCORDANCE WITH IPC-A-610.
2. ASSEMBLY PROCESS SHALL INCLUDE: REFLOW SOLDER TOP SIDE SMD. MAXIMUM SOLDER TEMPERATURE IS 240 DEGREES CELSIUS.
3. PARTS TO OMIT WILL BE SPECIFIED ON THE BILL OF MATERIALS. LOCATIONS OF OMITTED PARTS SHALL BE FREE OF SOLDER. MASK THE SOLDER STENCIL WHERE SMT PARTS ARE OMITTED.
4. INSTALL SHUNTS AS SHOWN ON ASSY DRAWING.
5. DEPANELIZE BOARDS AFTER ASSEMBLY AND ROUTE-OUT THE BREAKOUT TABS ON FOUR SIDES OF THE BOARD EDGE.
6. DO NOT APPLY ANY KIND OF ASSEMBLY STAMP OR QA STAMP TO ANY BOARD.
7. INSTALL STANDOFFS AS SHOWN BELOW:



8. THE STARTING PIN OF L1, L2 & L3 (MARKED BY BAR) SHOULD ALIGN WITH POLARITY INDICATORS (NOT SHOWN ON PCB).

APPROVALS		ANALOG DEVICES POWER BY LINEAR™	
PCB DES.	LT	FOR ADI CUSTOMER USE ONLY	
APP ENG.	MIKE S.	TITLE: ASSEMBLY DRAWING, TOP	
		LOW IQ TRIPLE OUTPUT SYNCHRONOUS STEP-DOWN SUPPLY	
SCALE = NONE		SIZE N/A	IC NO. LTC7819RUJ DC2897A
FILENAME: DC2897A-2.PCB			REV 2
			SHT 1 OF 2