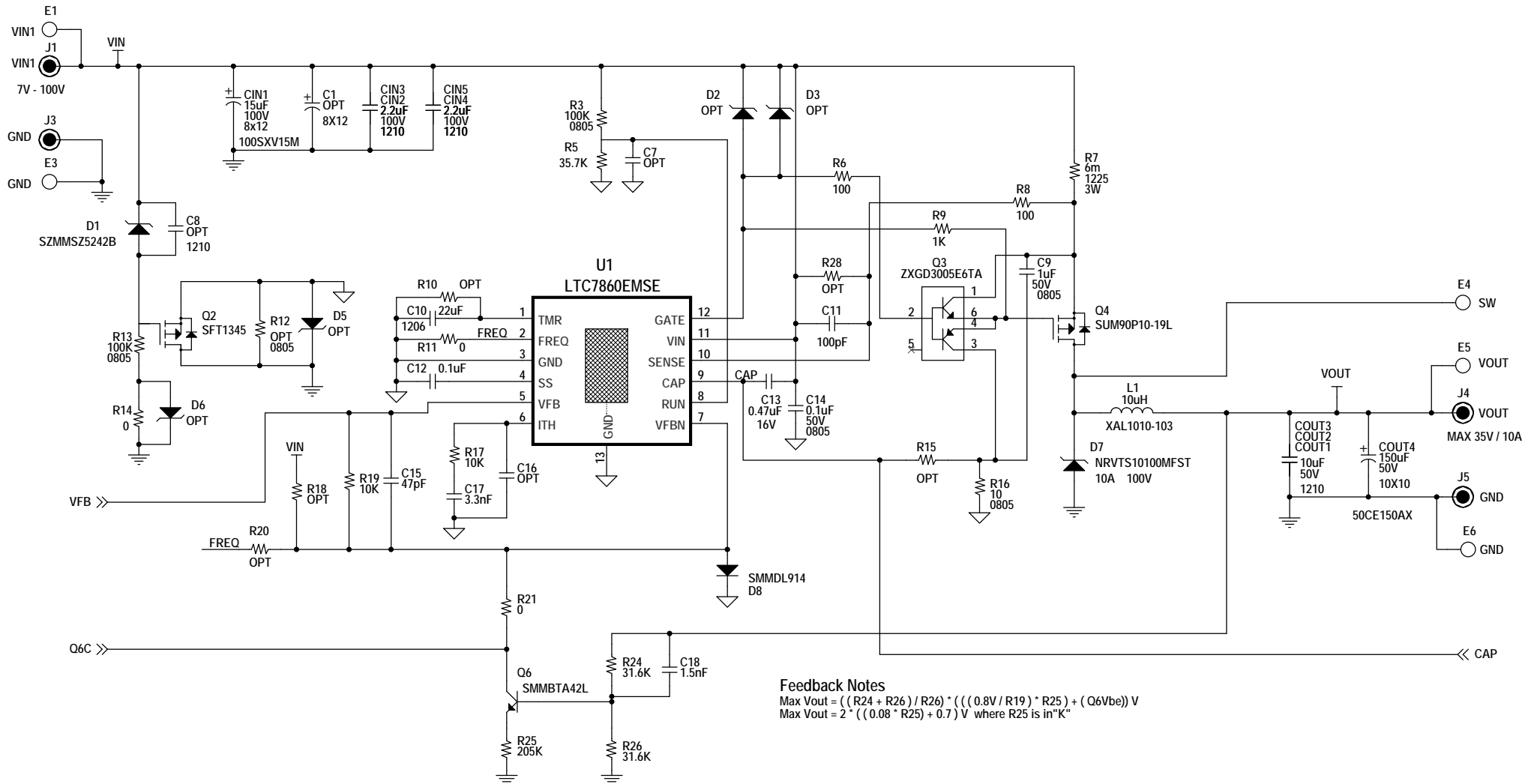



REVISION HISTORY				
ECO	REV	DESCRIPTION	APPROVED	DATE
—	2	PRODUCTION	DB	09-28-15

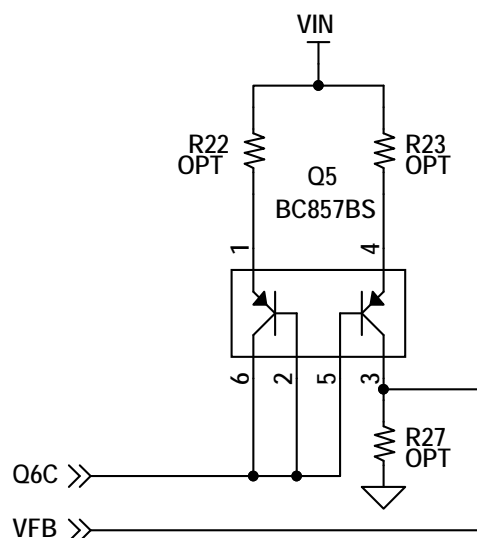


NOTE: UNLESS OTHERWISE SPECIFIED

1. ALL RESISTORS AND CAPACITORS ARE 0603.

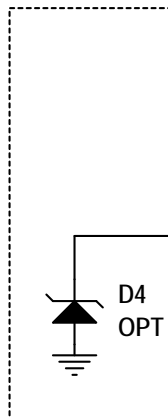
CAUTION, SHOCK HAZARD: CONTACT WITH HIGH VOLTAGE
CAN RESULT IN A DANGEROUS ELECTRIC SHOCK.

<div>CUSTOMER NOTICE</div> <div>LINEAR TECHNOLOGY HAS MADE A BEST EFFORT TO DESIGN A CIRCUIT THAT MEETS CUSTOMER-SUPPLIED SPECIFICATIONS; HOWEVER, IT REMAINS THE CUSTOMER'S RESPONSIBILITY TO VERIFY PROPER AND RELIABLE OPERATION IN THE ACTUAL APPLICATION. COMPONENT SUBSTITUTION AND PRINTED CIRCUIT BOARD LAYOUT MAY SIGNIFICANTLY AFFECT CIRCUIT PERFORMANCE OR RELIABILITY. CONTACT LINEAR TECHNOLOGY APPLICATIONS ENGINEERING FOR ASSISTANCE.</div>		<div>APPROVALS</div>		<div>1630 McCarthy Blvd. Milpitas, CA 95035 Phone: (408)432-1900 www.linear.com Fax: (408)434-0507 LTC Confidential-For Customer Use Only</div>		
		PCB DES.	LT			
		APP ENG.	DB	TITLE: SCHEMATIC		
				HIGH VOLTAGE SWITCHING SURGE STOPPER		
THIS CIRCUIT IS PROPRIETARY TO LINEAR TECHNOLOGY AND SUPPLIED FOR USE WITH LINEAR TECHNOLOGY PARTS.		SCALE = NONE		SIZE N/A	IC NO. LTC7860EMSE DC2392A	REV. 2
				DATE: Monday, September 28, 2015	SHEET 1 OF 2	

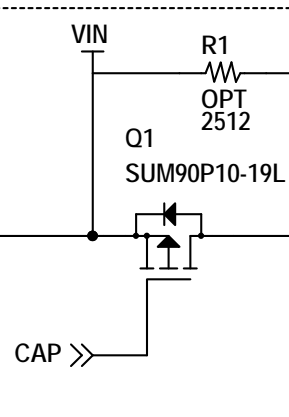


OPTIONAL FEEDBACK CIRCUIT
FOR VOUT < 12V

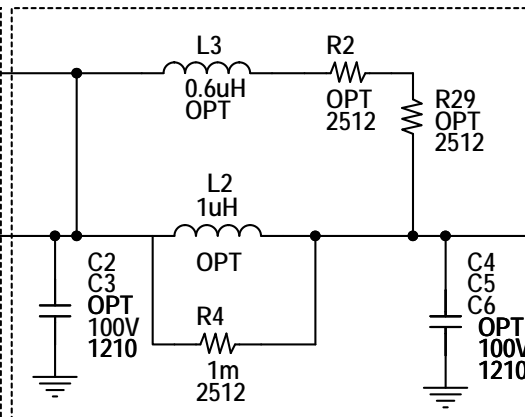
OPTIONAL
INPUT FILTER



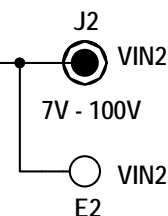
OPTIONAL
REV. POL. PROTECT



OPTIONAL INPUT FILTER



(REVERSE POLARITY
PROTECTED)



CUSTOMER NOTICE

LINEAR TECHNOLOGY HAS MADE A BEST EFFORT TO DESIGN A CIRCUIT THAT MEETS CUSTOMER-SUPPLIED SPECIFICATIONS; HOWEVER, IT REMAINS THE CUSTOMER'S RESPONSIBILITY TO VERIFY PROPER AND RELIABLE OPERATION IN THE ACTUAL APPLICATION. COMPONENT SUBSTITUTION AND PRINTED CIRCUIT BOARD LAYOUT MAY SIGNIFICANTLY AFFECT CIRCUIT PERFORMANCE OR RELIABILITY. CONTACT LINEAR TECHNOLOGY APPLICATIONS ENGINEERING FOR ASSISTANCE.

THIS CIRCUIT IS PROPRIETARY TO LINEAR TECHNOLOGY AND SUPPLIED FOR USE WITH LINEAR TECHNOLOGY PARTS.

APPROVALS

PCB DES. LT

APP ENG. DB

SCALE = NONE



1630 McCarthy Blvd.
Milpitas, CA 95035
Phone: (408)432-1900 www.linear.com
Fax: (408)434-0507
LTC Confidential-For Customer Use Only

TITLE: SCHEMATIC

HIGH VOLTAGE SWITCHING SURGE STOPPER

SIZE N/A IC NO. LTC7860EMSE
DC2392A

REV.
2

DATE: Monday, September 28, 2015

SHEET 2 OF 2