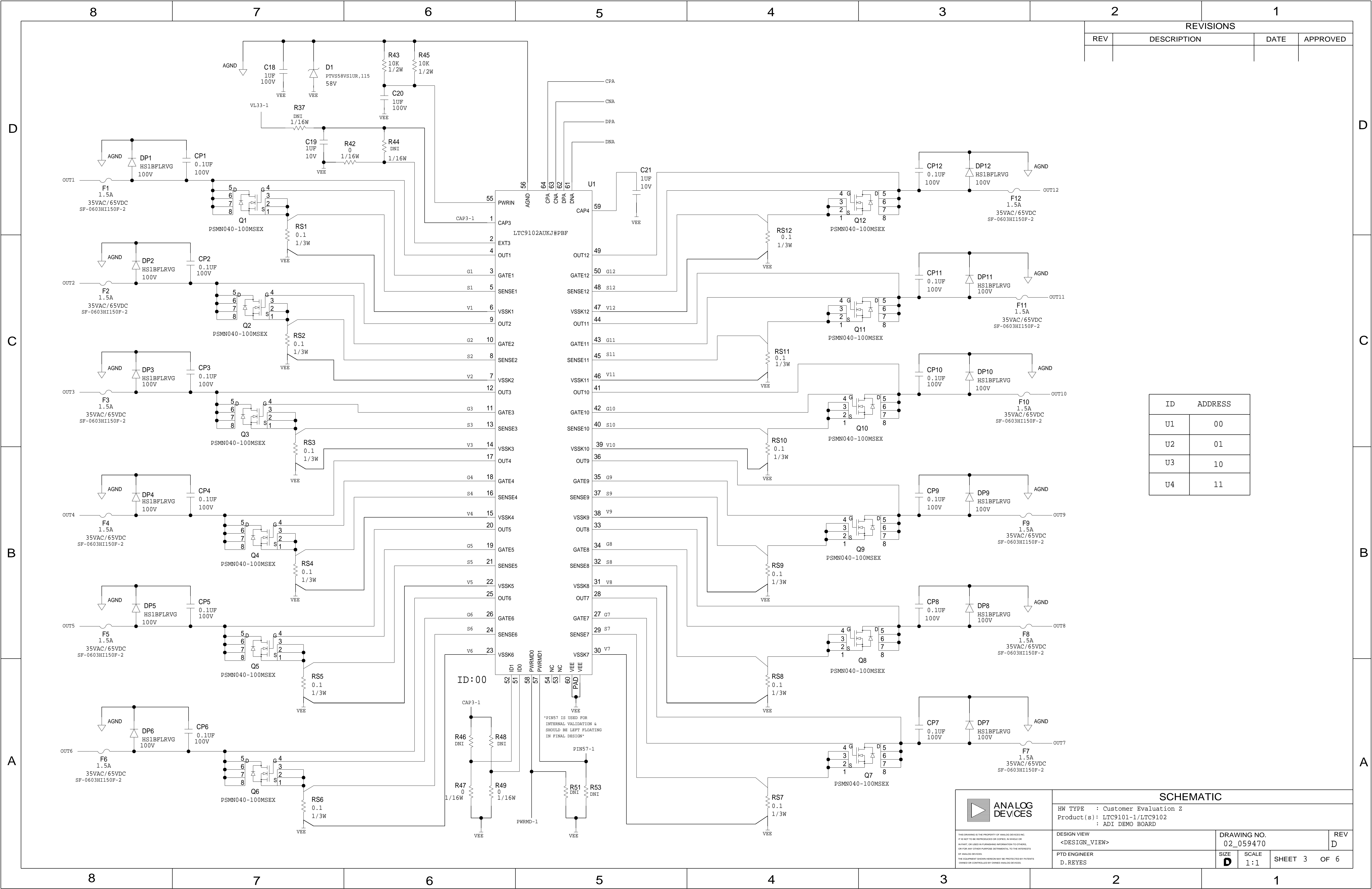
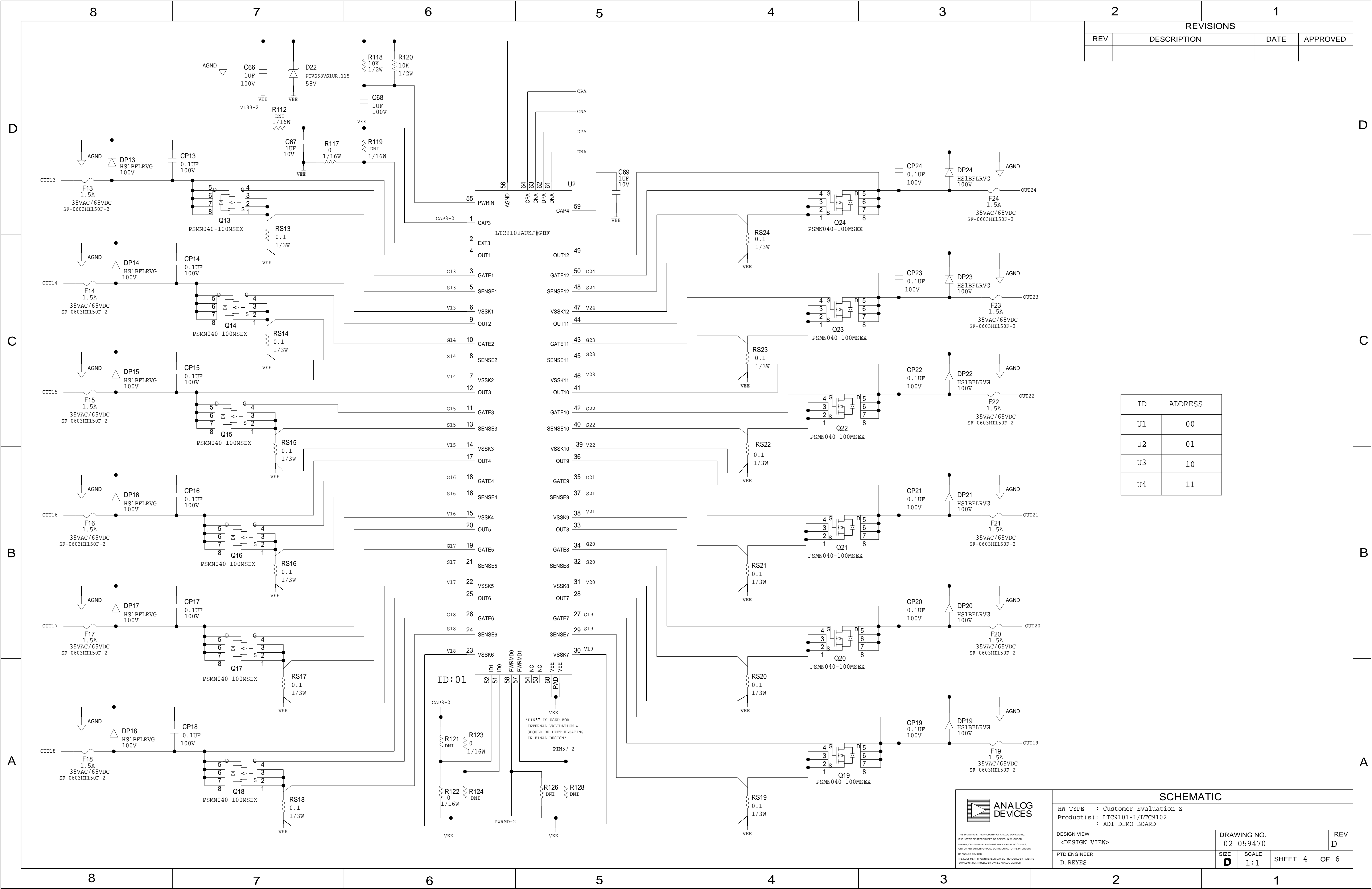


REVISIONS			
REV	DESCRIPTION	DATE	APPROVED

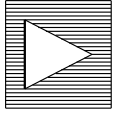
SCHEMATIC			
HW TYPE : Customer Evaluation Z Product(s): LTC9101-1/LTC9102 : ADI DEMO BOARD			
DESIGN VIEW <DESIGN_VIEW>	DRAWING NO. 02_059470	REV D	
PTD ENGINEER D.REYES	SIZE D	SCALE 1:1	SHEET 2 OF 6





REVISIONS			
REV	DESCRIPTION	DATE	APPROVED

ID	ADDRESS
U1	00
U2	01
U3	10
U4	11

**ANALOG
DEVICES**

SCHEMATIC

HW TYPE : Customer Evaluation Z
Product(s) : LTC9101-1/LTC9102
: ADI DEMO BOARD

DESIGN VIEW
<DESIGN_VIEW>

PTD ENGINEER
D.REYES

DRAWING NO.
02_059470

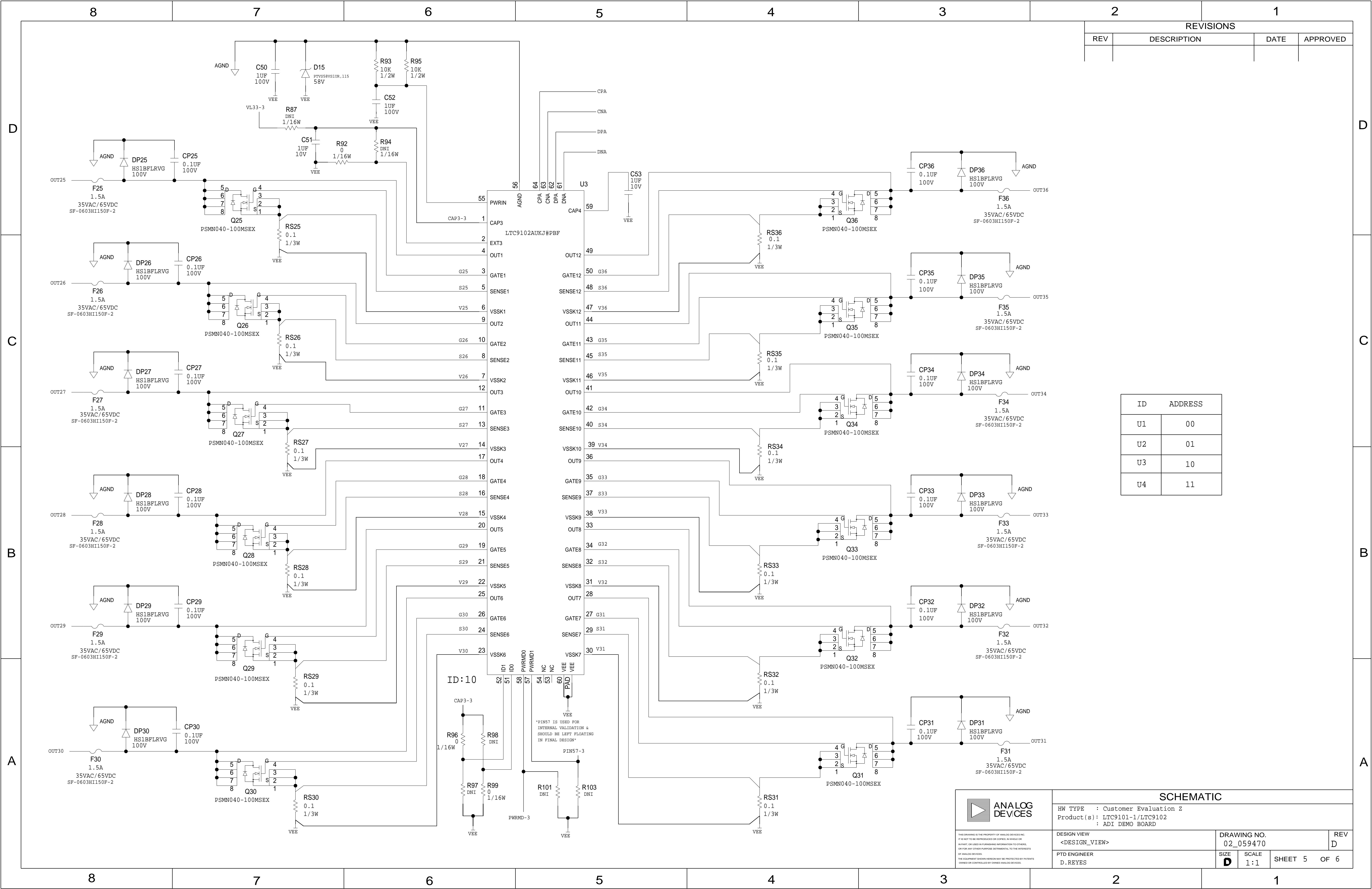
SIZE
D

SCALE
1:1

SHEET 4 OF 6

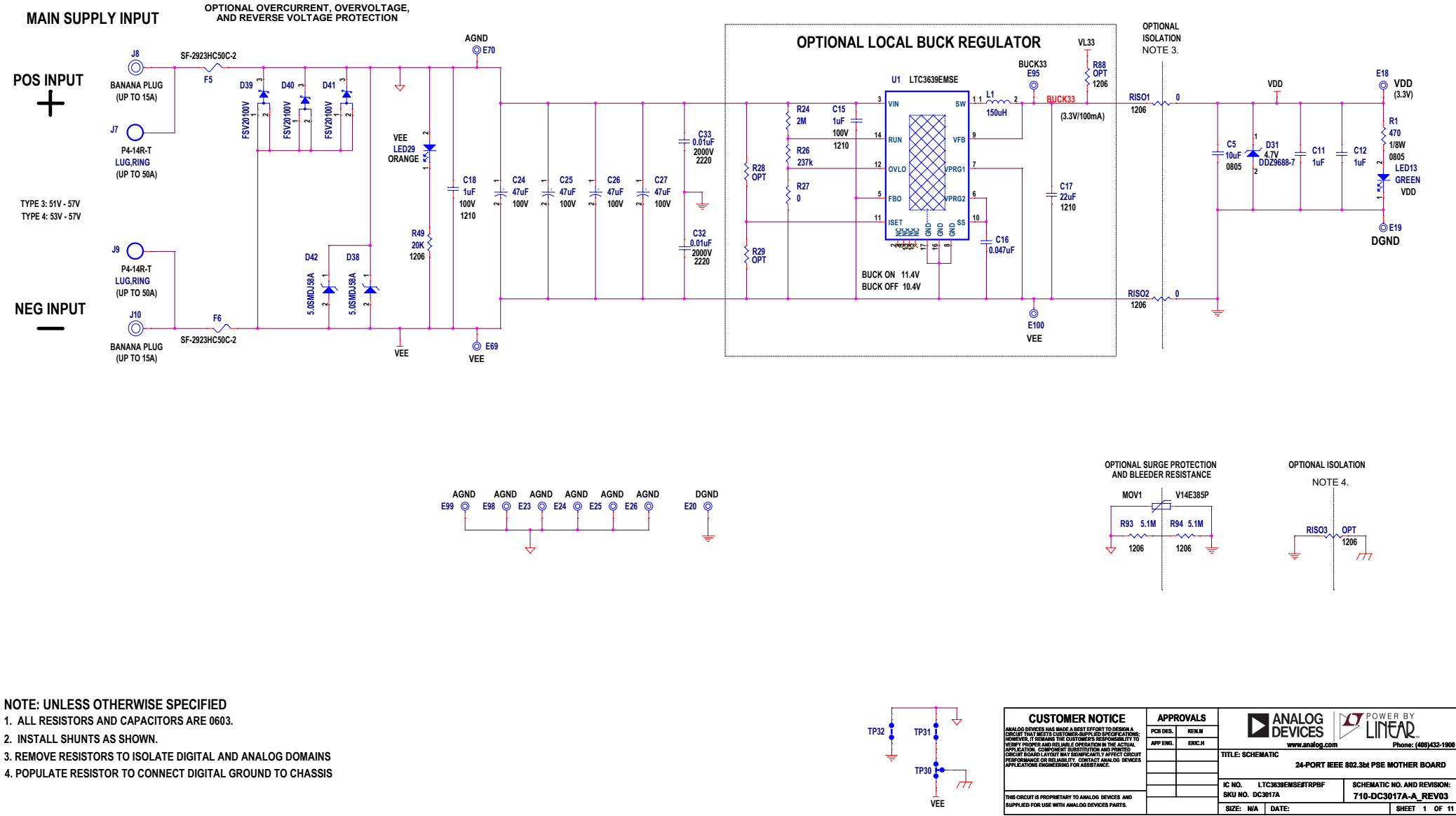
REV
D

THIS DRAWING IS THE PROPERTY OF ANALOG DEVICES INC.
IT IS NOT TO BE REPRODUCED OR COPIED IN WHOLE OR
IN PART, OR USED IN FURNISHING INFORMATION TO OTHERS,
OR FOR ANY OTHER PURPOSE DETRIMENTAL TO THE INTERESTS
OF ANALOG DEVICES.
THE EQUIPMENT SHOWN HEREON MAY BE PROTECTED BY PATENTS
OWNED OR CONTROLLED BY ANALOG DEVICES.



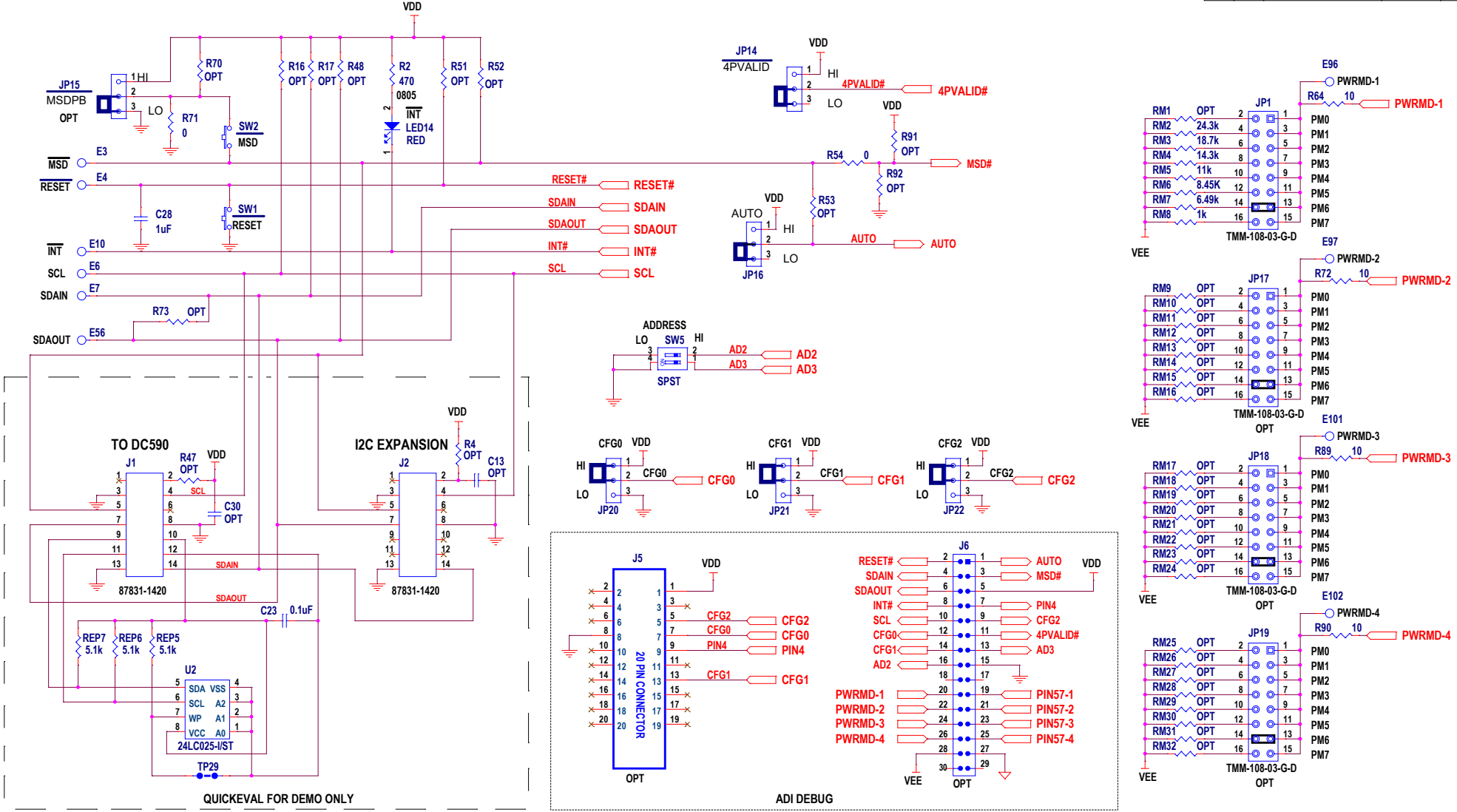
POWER SUPPLY

REVISION HISTORY				
ECO	REV	DESCRIPTION	APPROVED	DATE
	3			



CONFIGURATIONS

REVISION HISTORY				
ECO	REV	DESCRIPTION	APPROVED	DATE
	3			



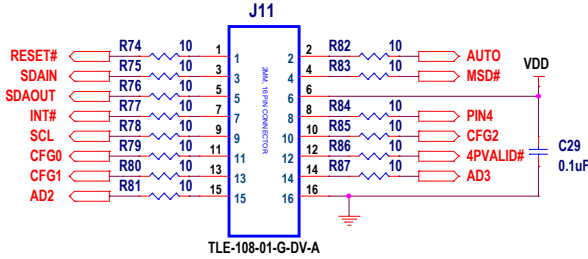
NOTE: UNLESS OTHERWISE SPECIFIED
1. ALL RESISTORS AND CAPACITORS ARE 0603.
2. INSTALL SHUNTS AS SHOWN.

CUSTOMER NOTICE		APPROVALS		ANALOG DEVICES		POWER BY LINEAR	
ANALOG DEVICES HAS MADE A BEST EFFORT TO DESIGN A CIRCUIT THAT MEETS CUSTOMER-SUPPLIED SPECIFICATIONS; HOWEVER, IT REMAINS THE CUSTOMER'S RESPONSIBILITY TO VERIFY PROPER AND RELIABLE OPERATION IN THE ACTUAL APPLICATION. COMPONENT SUBSTITUTION AND PRINTED CIRCUIT BOARD LAYOUT MAY SIGNIFICANTLY AFFECT CIRCUIT PERFORMANCE OR RELIABILITY. CONTACT ANALOG DEVICES APPLICATIONS ENGINEERING FOR ASSISTANCE.		PCB DES.	KENM	www.analog.com		Phone: (408)432-1900	
		APP ENG.	ERIC H				
THIS CIRCUIT IS PROPRIETARY TO ANALOG DEVICES AND SUPPLIED FOR USE WITH ANALOG DEVICES PARTS.				TITLE: SCHEMATIC		24-PORT IEEE 802.3bt PSE MOTHER BOARD	
				IC NO. LTC3639EMSE#TRPBF		SCHEMATIC NO. AND REVISION:	
				SKU NO. DC3017A		710-DC3017A-A_REV03	
				SIZE: N/A		DATE:	
						SHEET 2 OF 11	

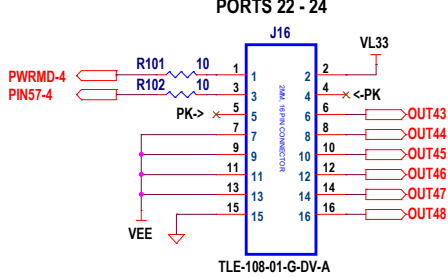
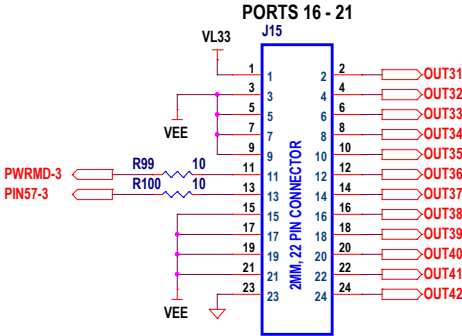
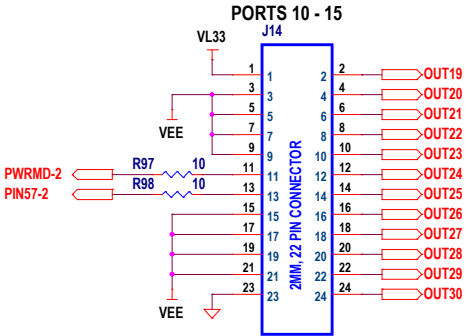
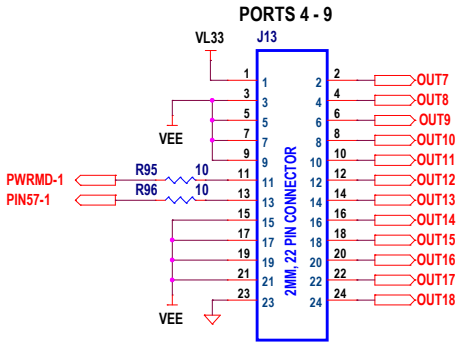
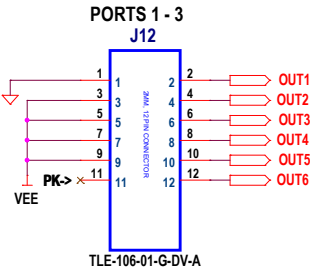
DAUGHTER CARD CONNECTIONS

REVISION HISTORY				
ECO	REV	DESCRIPTION	APPROVED	DATE
	3			

DIGITAL CONNECTIONS



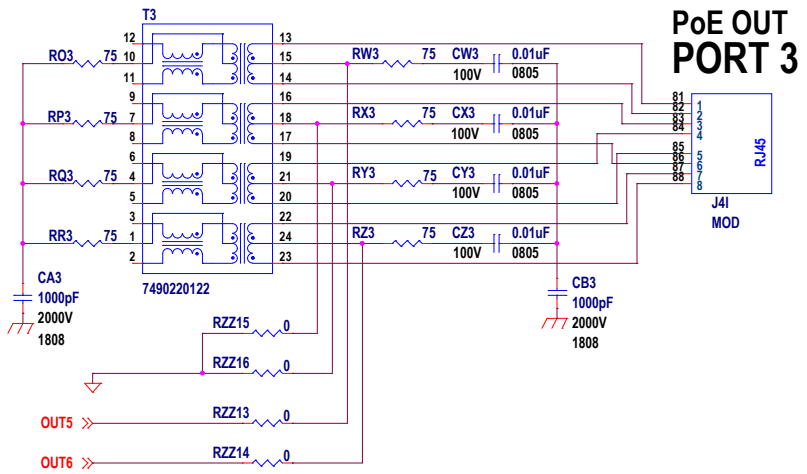
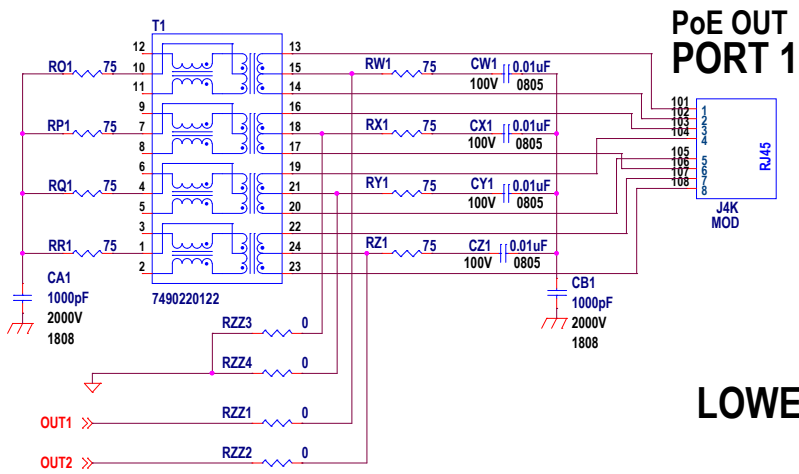
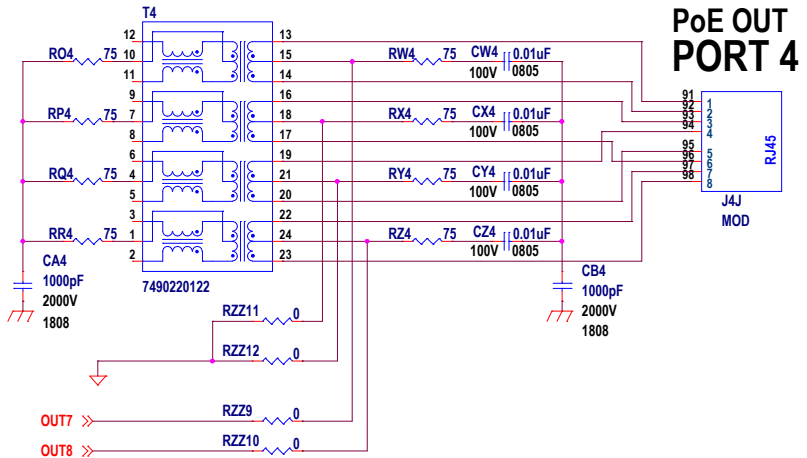
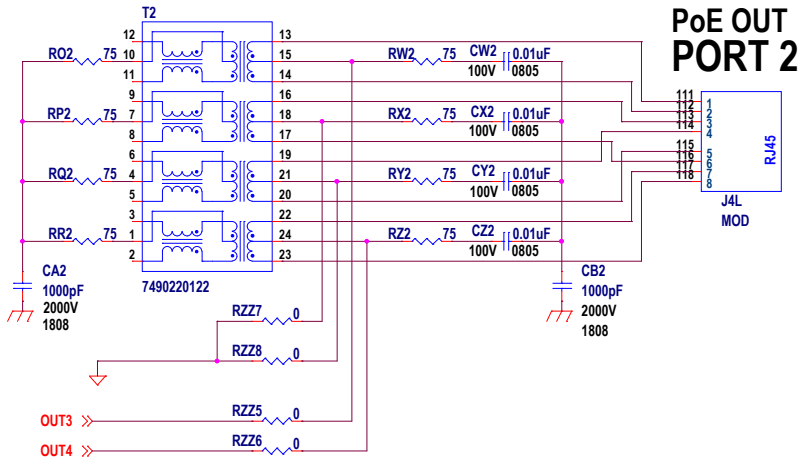
ANALOG CONNECTIONS



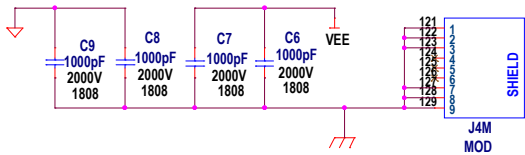
NOTE: UNLESS OTHERWISE SPECIFIED
1. ALL RESISTORS AND CAPACITORS ARE 0603.
2. INSTALL SHUNTS AS SHOWN.

CUSTOMER NOTICE ANALOG DEVICES HAS MADE A BEST EFFORT TO DESIGN A CIRCUIT THAT MEETS CUSTOMER-SUPPLIED SPECIFICATIONS; HOWEVER, IT REMAINS THE CUSTOMER'S RESPONSIBILITY TO VERIFY PROPER AND RELIABLE OPERATION IN THE ACTUAL APPLICATION. COMPONENT SUBSTITUTION AND PRINTED CIRCUIT BOARD LAYOUT MAY SIGNIFICANTLY AFFECT CIRCUIT PERFORMANCE OR RELIABILITY. CONTACT ANALOG DEVICES APPLICATIONS ENGINEERING FOR ASSISTANCE. THIS CIRCUIT IS PROPRIETARY TO ANALOG DEVICES AND SUPPLIED FOR USE WITH ANALOG DEVICES PARTS.	APPROVALS PCB DES. KEIMM APP ENG. ERIC.H		 www.analog.com Phone: (408)432-1900	
TITLE: SCHEMATIC 24-PORT IEEE 802.3bt PSE MOTHER BOARD				
IC NO. LTC3839EMSE#TRPBF SKU NO. DC3017A		SCHEMATIC NO. AND REVISION: 710-DC3017A-A_REV03		
SIZE: N/A		DATE:	SHEET 3 OF 11	

REVISION HISTORY				
ECO	REV	DESCRIPTION	APPROVED	DATE
	3			



LOWER ROW

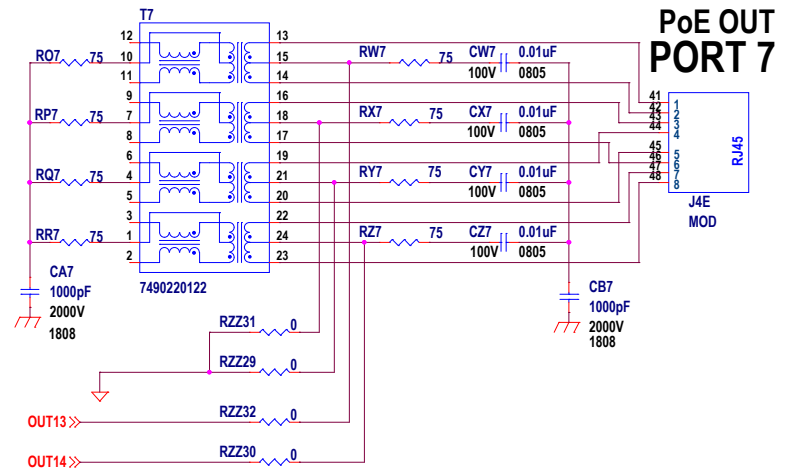
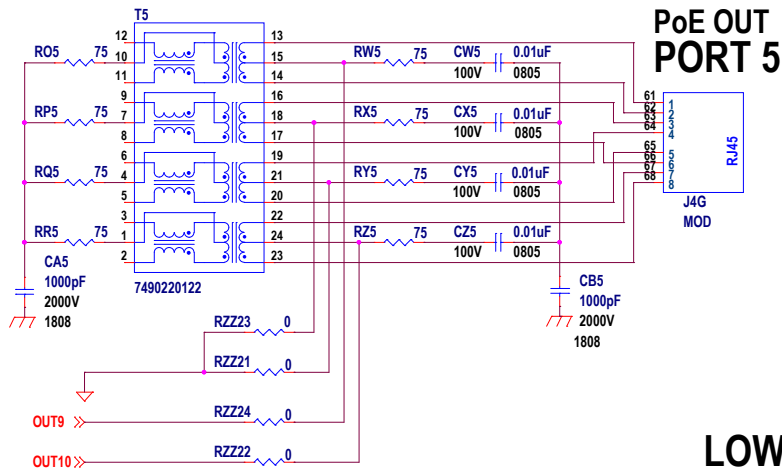
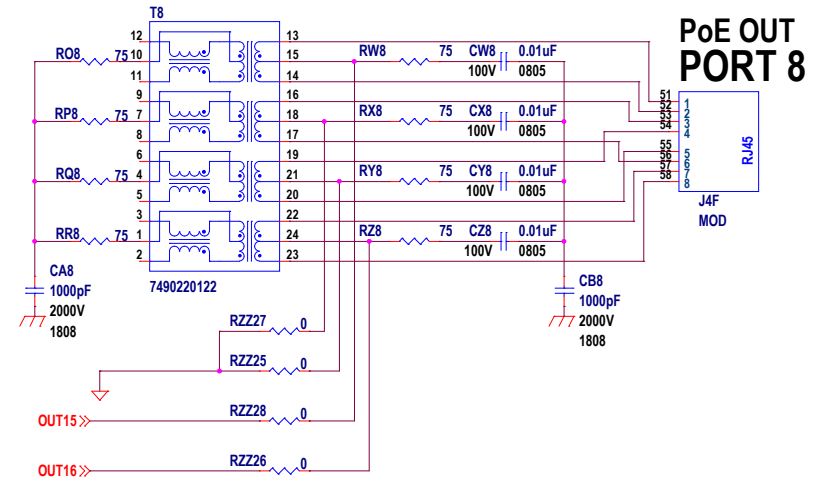
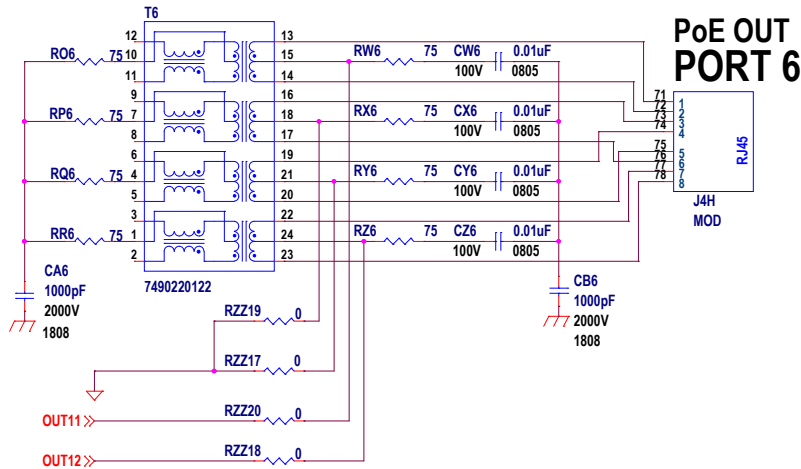


NOTE: UNLESS OTHERWISE SPECIFIED
1. ALL RESISTORS AND CAPACITORS ARE 0603.
2. INSTALL SHUNTS AS SHOWN.

CUSTOMER NOTICE		APPROVALS		ANALOG DEVICES		POWER BY LINEAR			
ANALOG DEVICES HAS MADE A BEST EFFORT TO DESIGN A CIRCUIT THAT MEETS CUSTOMER-SUPPLIED SPECIFICATIONS; HOWEVER, IT REMAINS THE CUSTOMER'S RESPONSIBILITY TO VERIFY PROPER AND RELIABLE OPERATION IN THE ACTUAL APPLICATION. COMPONENT SUBSTITUTION AND PRINTED CIRCUIT BOARD LAYOUT MAY SIGNIFICANTLY AFFECT CIRCUIT PERFORMANCE OR RELIABILITY. CONTACT ANALOG DEVICES APPLICATIONS ENGINEERING FOR ASSISTANCE.		PCB DES.	KENLM	www.analog.com		Phone: (408)432-1900			
		APP ENG.	ERIC.H						
THIS CIRCUIT IS PROPRIETARY TO ANALOG DEVICES AND SUPPLIED FOR USE WITH ANALOG DEVICES PARTS.				TITLE: SCHEMATIC					
				24-PORT IEEE 802.3bt PSE MOTHER BOARD					
				IC NO. LTC3839EMSE#TRPBF SKU NO. DC3017A		SCHEMATIC NO. AND REVISION: 710-DC3017A-A_REV03			
SIZE: N/A		DATE:				SHEET 4 OF 11			

UPPER ROW



REVISION HISTORY				
ECO	REV	DESCRIPTION	APPROVED	DATE
	3			

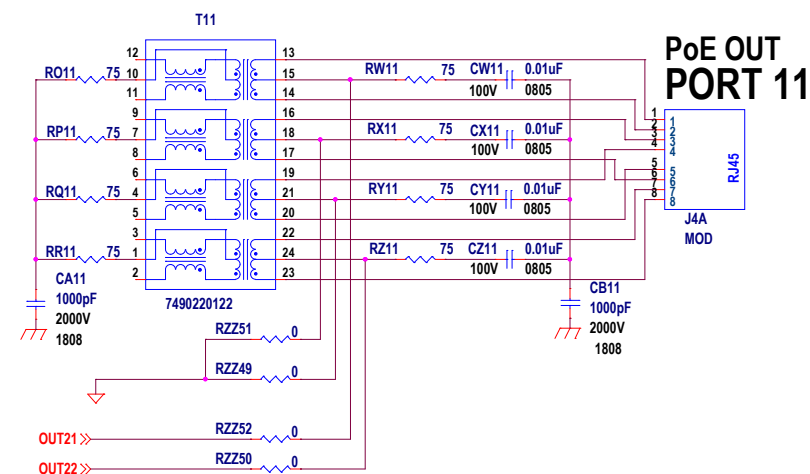
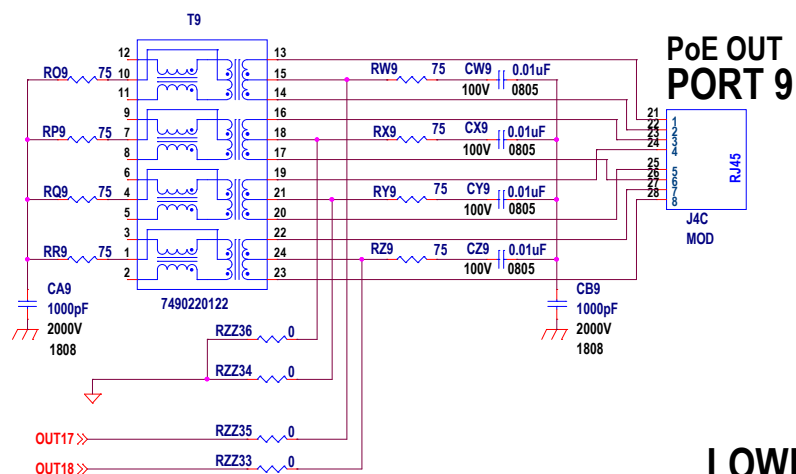
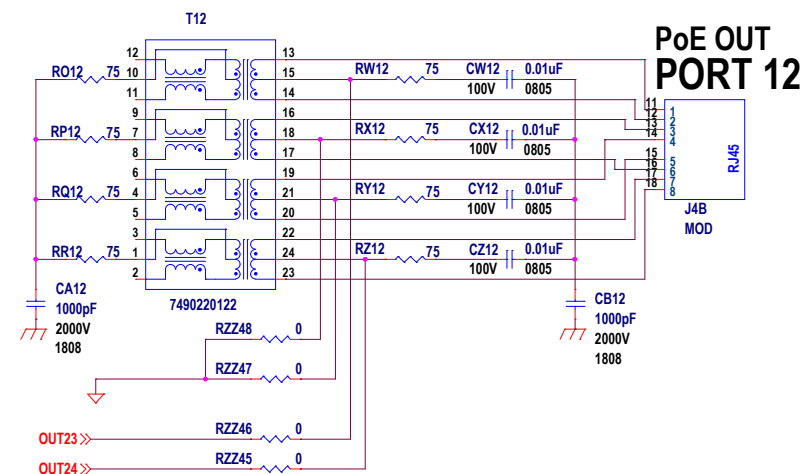


LOWER ROW

NOTE: UNLESS OTHERWISE SPECIFIED



1. ALL RESISTORS AND CAPACITORS ARE 0603.
2. INSTALL SHUNTS AS SHOWN.

CUSTOMER NOTICE		APPROVALS		 ANALOG DEVICES		 POWER BY LINEAR	
ANALOG DEVICES HAS MADE A BEST EFFORT TO DESIGN A CIRCUIT THAT MEETS CUSTOMER-SUPPLIED SPECIFICATIONS; HOWEVER, IT REMAINS THE CUSTOMER'S RESPONSIBILITY TO VERIFY PROPER AND RELIABLE OPERATION IN THE ACTUAL APPLICATION. COMPONENT SUBSTITUTION AND PRINTED CIRCUIT BOARD LAYOUT MAY SIGNIFICANTLY AFFECT CIRCUIT PERFORMANCE OR RELIABILITY. CONTACT ANALOG DEVICES APPLICATIONS ENGINEERING FOR ASSISTANCE.		PCB DES.	KEMLM	www.analog.com		Phone: (408)432-1900	
		APP ENG.	ERIC.H				
THIS CIRCUIT IS PROPRIETARY TO ANALOG DEVICES AND SUPPLIED FOR USE WITH ANALOG DEVICES PARTS.				TITLE: SCHEMATIC			
				24-PORT IEEE 802.3bt PSE MOTHER BOARD			
				IC NO. LTC3839EMSE#TRPBF SKU NO. DC3017A		SCHEMATIC NO. AND REVISION: 710-DC3017A-A_REV03	
SIZE: N/A		DATE:				SHEET 5 OF 11	

[illegible]

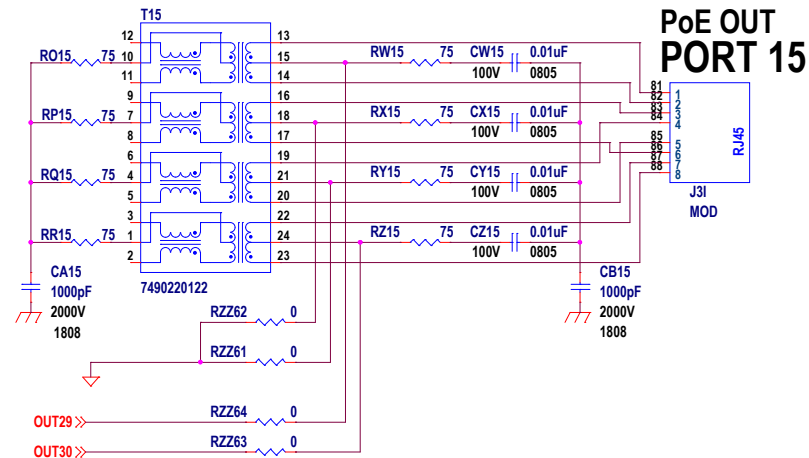
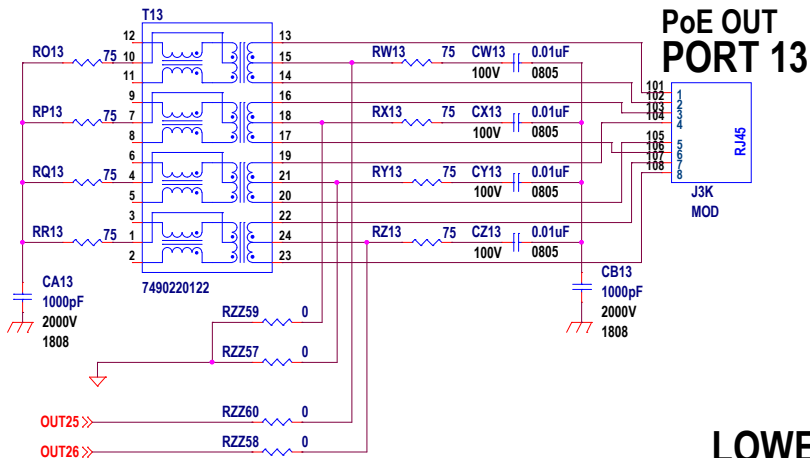
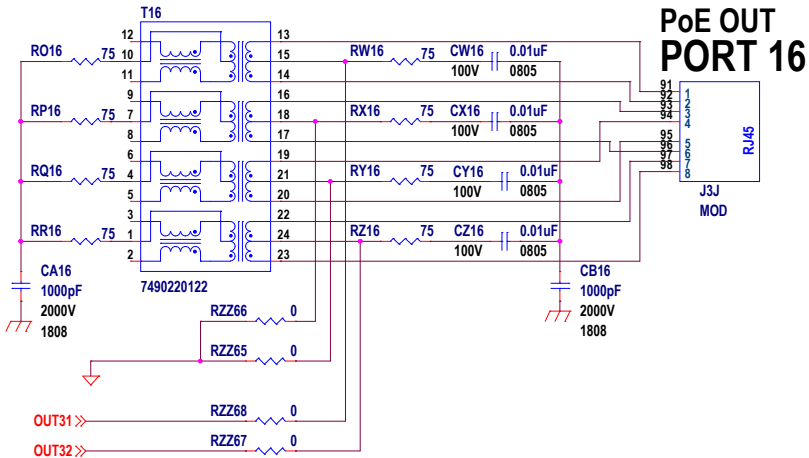
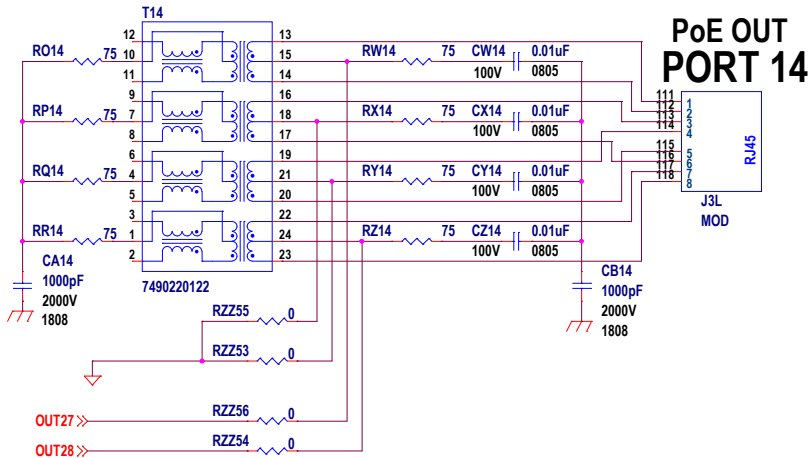
LOWER ROW

1. ALL RESISTORS AND CAPACITORS ARE 0603.
2. INSTALL SHUNTS AS SHOWN.

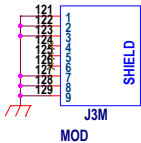
<div>CUSTOMER NOTICE</div> <div>ANALOG DEVICES HAS MADE A BEST EFFORT TO DESIGN A CIRCUIT THAT MEETS CUSTOMER-SUPPLIED SPECIFICATIONS; HOWEVER, IT REMAINS THE CUSTOMER'S RESPONSIBILITY TO VERIFY PROPER AND RELIABLE OPERATION IN THE ACTUAL APPLICATION. COMPONENT SUBSTITUTION AND PRINTED CIRCUIT BOARD LAYOUT MAY SIGNIFICANTLY AFFECT CIRCUIT PERFORMANCE OR RELIABILITY. CONTACT ANALOG DEVICES APPLICATIONS ENGINEERING FOR ASSISTANCE.</div>		<div>APPROVALS</div> <table><tr><td>PCB DES.</td><td>KEMM</td></tr><tr><td>APP ENG.</td><td>ERIC.H</td></tr><tr><td></td><td></td></tr><tr><td></td><td></td></tr><tr><td></td><td></td></tr><tr><td></td><td></td></tr><tr><td></td><td></td></tr></table>		PCB DES.	KEMM	APP ENG.	ERIC.H											<div><div>ANALOG DEVICES</div><div>POWER BY LINEAR™</div><div>www.analog.com</div><div>Phone: (408)432-1900</div></div>	
PCB DES.	KEMM																		
APP ENG.	ERIC.H																		
<div>THIS CIRCUIT IS PROPRIETARY TO ANALOG DEVICES AND SUPPLIED FOR USE WITH ANALOG DEVICES PARTS.</div>		TITLE: SCHEMATIC		24-PORT IEEE 802.3bt PSE MOTHER BOARD															
		IC NO. LTC3639MSE#TRPBF		SCHEMATIC NO. AND REVISION:															
		SKU NO. DC3017A		710-DC3017A-A_REV03															
SIZE: NA		DATE:		SHEET 6 OF 1															

UPPER ROW

REVISION HISTORY				
ECO	REV	DESCRIPTION	APPROVED	DATE
	3			





LOWER ROW



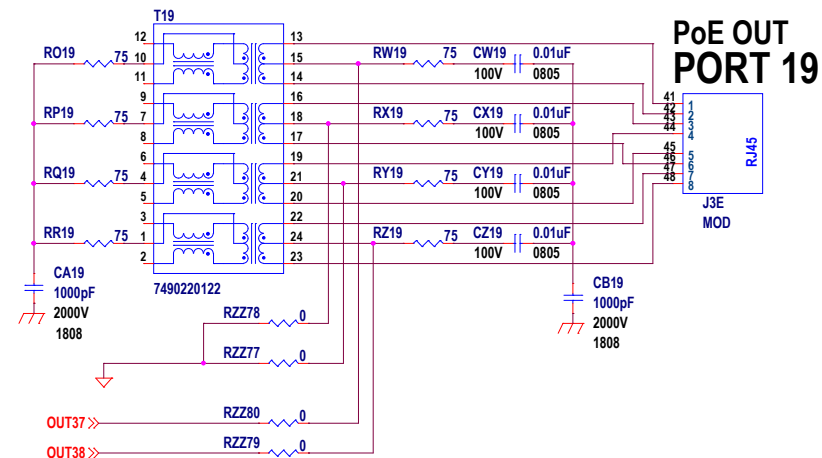
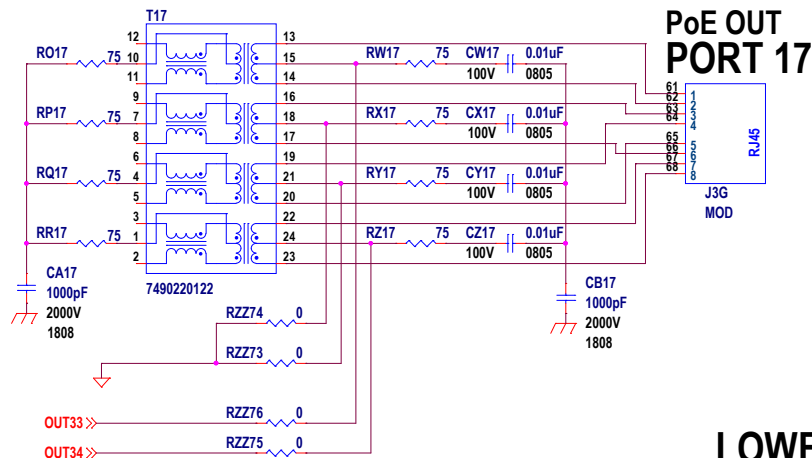
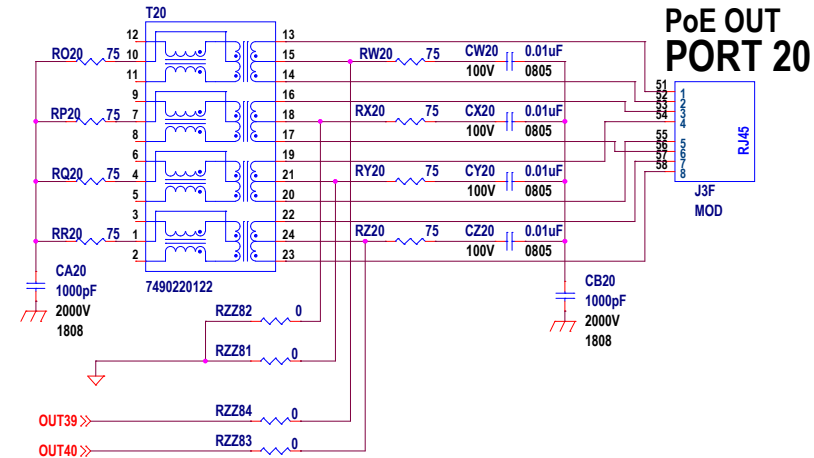
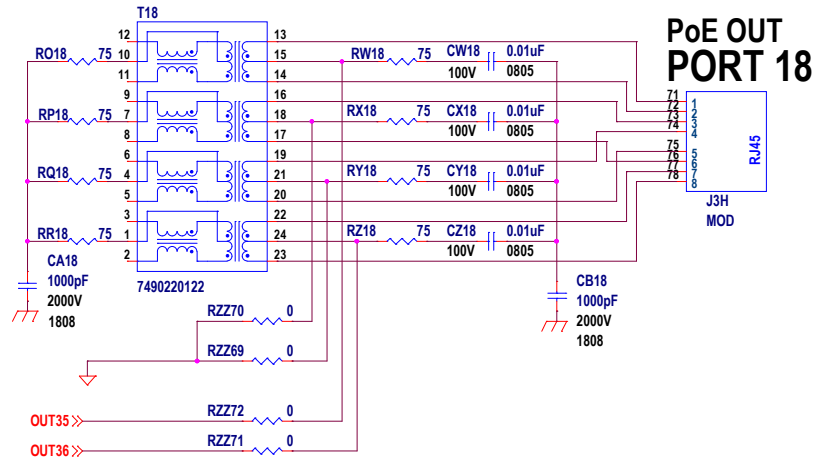
NOTE: UNLESS OTHERWISE SPECIFIED

1. ALL RESISTORS AND CAPACITORS ARE 0603.
2. INSTALL SHUNTS AS SHOWN.

CUSTOMER NOTICE		APPROVALS		 ANALOG DEVICES		 POWER BY LINEAR	
ANALOG DEVICES HAS MADE A BEST EFFORT TO DESIGN A CIRCUIT THAT MEETS CUSTOMER-SUPPLIED SPECIFICATIONS; HOWEVER, IT REMAINS THE CUSTOMER'S RESPONSIBILITY TO VERIFY PROPER AND RELIABLE OPERATION IN THE ACTUAL APPLICATION. COMPONENT SUBSTITUTION AND PRINTED CIRCUIT BOARD LAYOUT MAY SIGNIFICANTLY AFFECT CIRCUIT PERFORMANCE OR RELIABILITY. CONTACT ANALOG DEVICES APPLICATIONS ENGINEERING FOR ASSISTANCE.		PCB DES.	KEM/M	www.analog.com		Phone: (408)432-1900	
		APP ENG.	ERIC.H				
THIS CIRCUIT IS PROPRIETARY TO ANALOG DEVICES AND SUPPLIED FOR USE WITH ANALOG DEVICES PARTS.				TITLE: SCHEMATIC			
				24-PORT IEEE 802.3bt PSE MOTHER BOARD			
				IC NO. LTC3839EMSE#TRPBF		SCHEMATIC NO. AND REVISION:	
				SKU NO. DC3017A		710-DC3017A-A_REV03	
				SIZE: N/A		DATE:	
						SHEET 7 OF 11	

UPPER ROW



REVISION HISTORY				
ECO	REV	DESCRIPTION	APPROVED	DATE
	3			



LOWER ROW

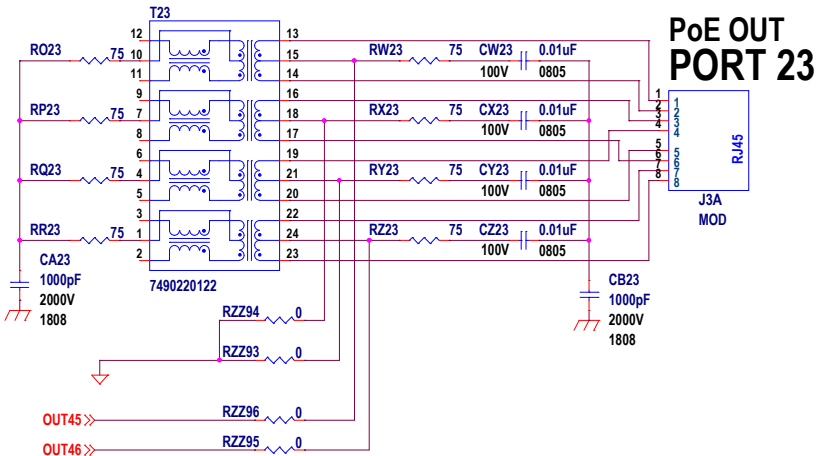
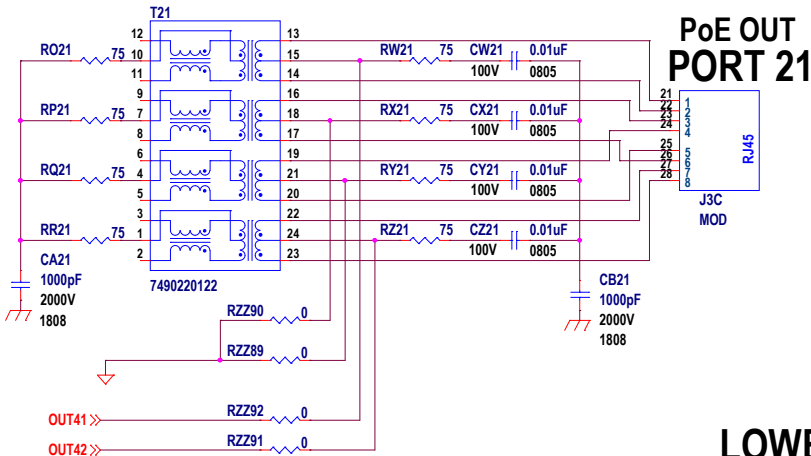
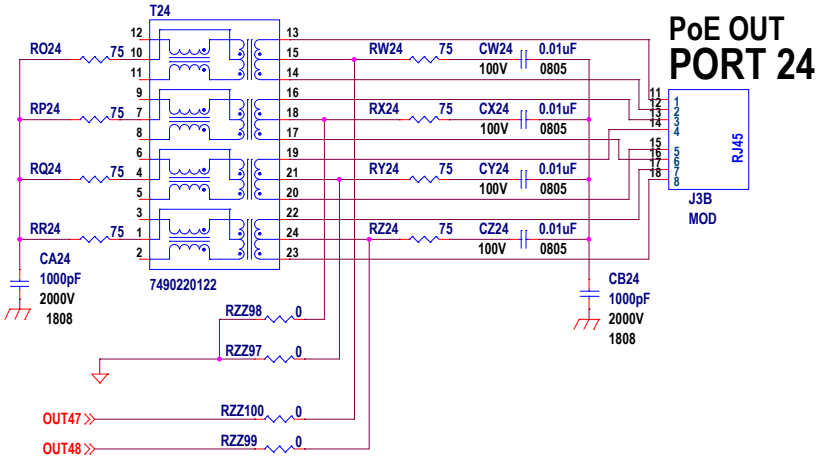
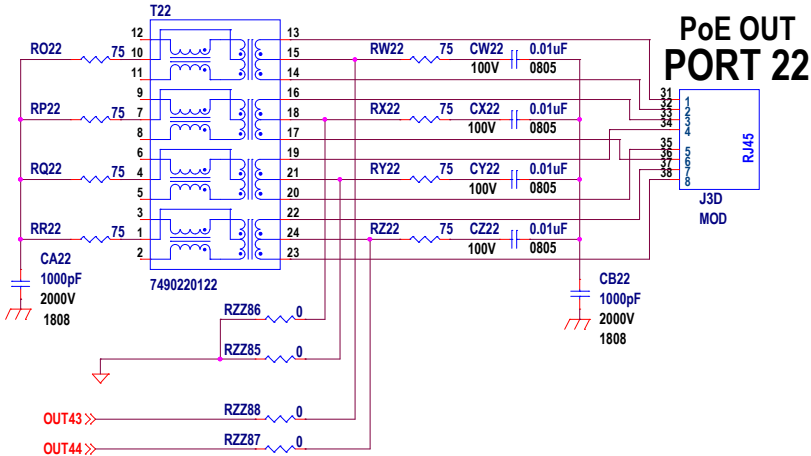
NOTE: UNLESS OTHERWISE SPECIFIED

1. ALL RESISTORS AND CAPACITORS ARE 0603.
2. INSTALL SHUNTS AS SHOWN.

CUSTOMER NOTICE		APPROVALS		 ANALOG DEVICES		 POWER BY LINEAR			
ANALOG DEVICES HAS MADE A BEST EFFORT TO DESIGN A CIRCUIT THAT MEETS CUSTOMER-SUPPLIED SPECIFICATIONS; HOWEVER, IT REMAINS THE CUSTOMER'S RESPONSIBILITY TO VERIFY PROPER AND RELIABLE OPERATION IN THE ACTUAL APPLICATION. COMPONENT SUBSTITUTION AND PRINTED CIRCUIT BOARD LAYOUT MAY SIGNIFICANTLY AFFECT CIRCUIT PERFORMANCE OR RELIABILITY. CONTACT ANALOG DEVICES APPLICATIONS ENGINEERING FOR ASSISTANCE.		PCB DES.	KELM	www.analog.com		Phone: (408)432-1900			
		APP ENG.	ERIC.H						
THIS CIRCUIT IS PROPRIETARY TO ANALOG DEVICES AND SUPPLIED FOR USE WITH ANALOG DEVICES PARTS.				TITLE: SCHEMATIC					
				24-PORT IEEE 802.3bt PSE MOTHER BOARD					
				IC NO. LTC3839EMSE#TRPBF		SCHEMATIC NO. AND REVISION:			
				SKU NO. DC3017A		710-DC3017A-A_REV03			
				SIZE: N/A		DATE:		SHEET 8 OF 11	

UPPER ROW



REVISION HISTORY				
ECO	REV	DESCRIPTION	APPROVED	DATE
	3			



LOWER ROW

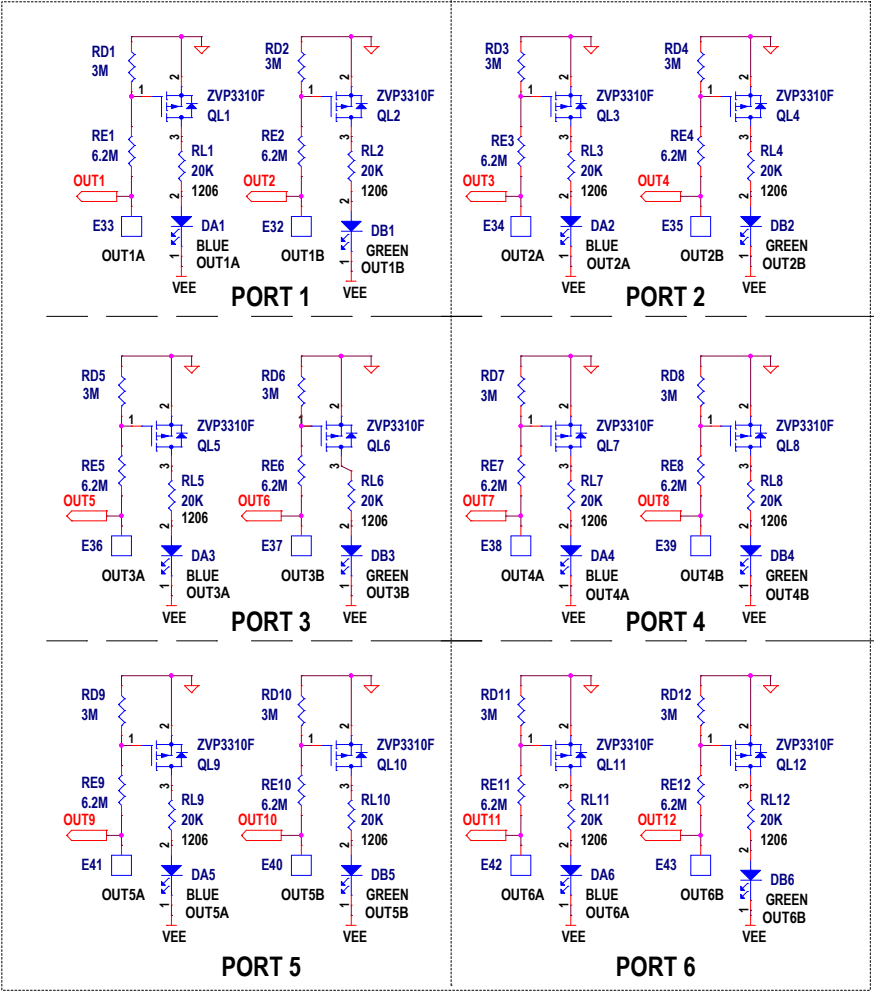
NOTE: UNLESS OTHERWISE SPECIFIED

- 1. ALL RESISTORS AND CAPACITORS ARE 0603.
- 2. INSTALL SHUNTS AS SHOWN.

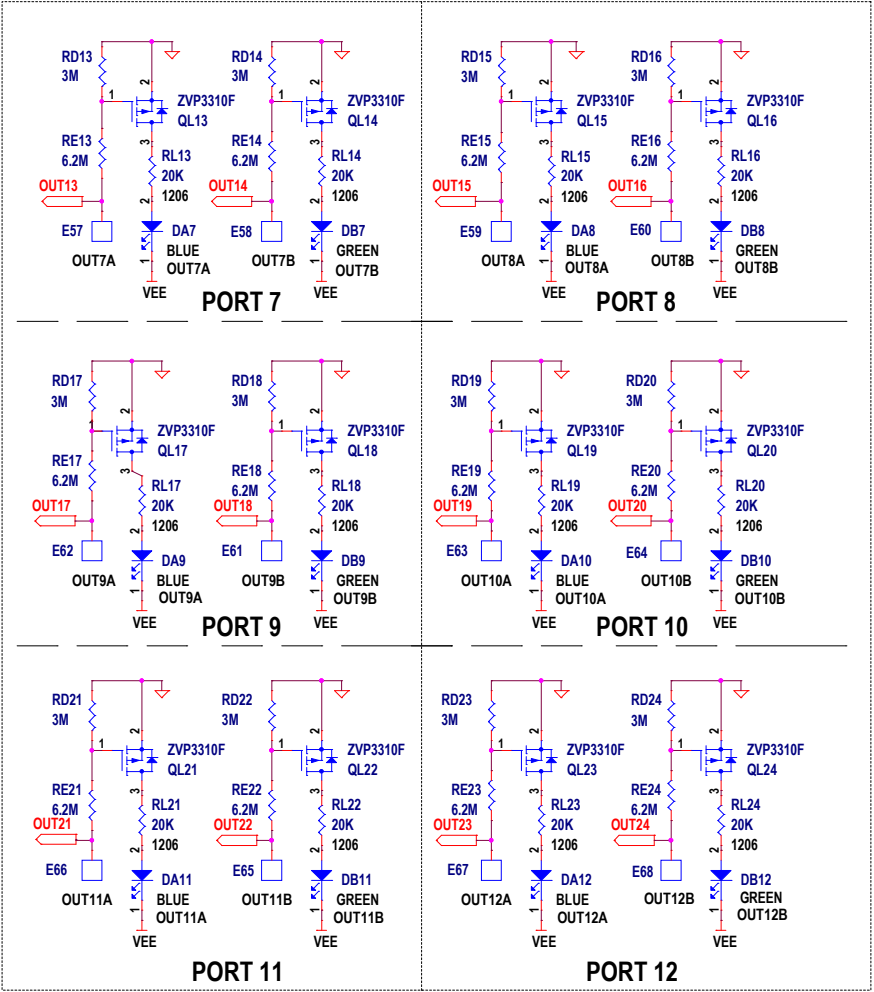
CUSTOMER NOTICE		APPROVALS		 ANALOG DEVICES		 POWER BY LINEAR	
ANALOG DEVICES HAS MADE A BEST EFFORT TO DESIGN A CIRCUIT THAT MEETS CUSTOMER-SUPPLIED SPECIFICATIONS; HOWEVER, IT REMAINS THE CUSTOMER'S RESPONSIBILITY TO VERIFY PROPER AND RELIABLE OPERATION IN THE ACTUAL APPLICATION. COMPONENT SUBSTITUTION AND PRINTED CIRCUIT BOARD LAYOUT MAY SIGNIFICANTLY AFFECT CIRCUIT PERFORMANCE OR RELIABILITY. CONTACT ANALOG DEVICES APPLICATIONS ENGINEERING FOR ASSISTANCE.		PCB DES.	KENLM	www.analog.com		Phone: (408)432-1900	
		APP ENG.	ERIC.H				
THIS CIRCUIT IS PROPRIETARY TO ANALOG DEVICES AND SUPPLIED FOR USE WITH ANALOG DEVICES PARTS.				TITLE: SCHEMATIC			
				24-PORT IEEE 802.3bt PSE MOTHER BOARD			
				IC NO. LTC3839EMSE#TRPBF		SCHEMATIC NO. AND REVISION:	
				SKU NO. DC3017A		710-DC3017A-A_REV03	
				SIZE: N/A		DATE:	
						SHEET 9 OF 11	

REVISION HISTORY				
ECO	REV	DESCRIPTION	APPROVED	DATE
	3			

OPTIONAL PORT LED DRIVERS - PORTS 1 TO 6





OPTIONAL PORT LED DRIVERS - PORTS 7 - 12



NOTE: UNLESS OTHERWISE SPECIFIED

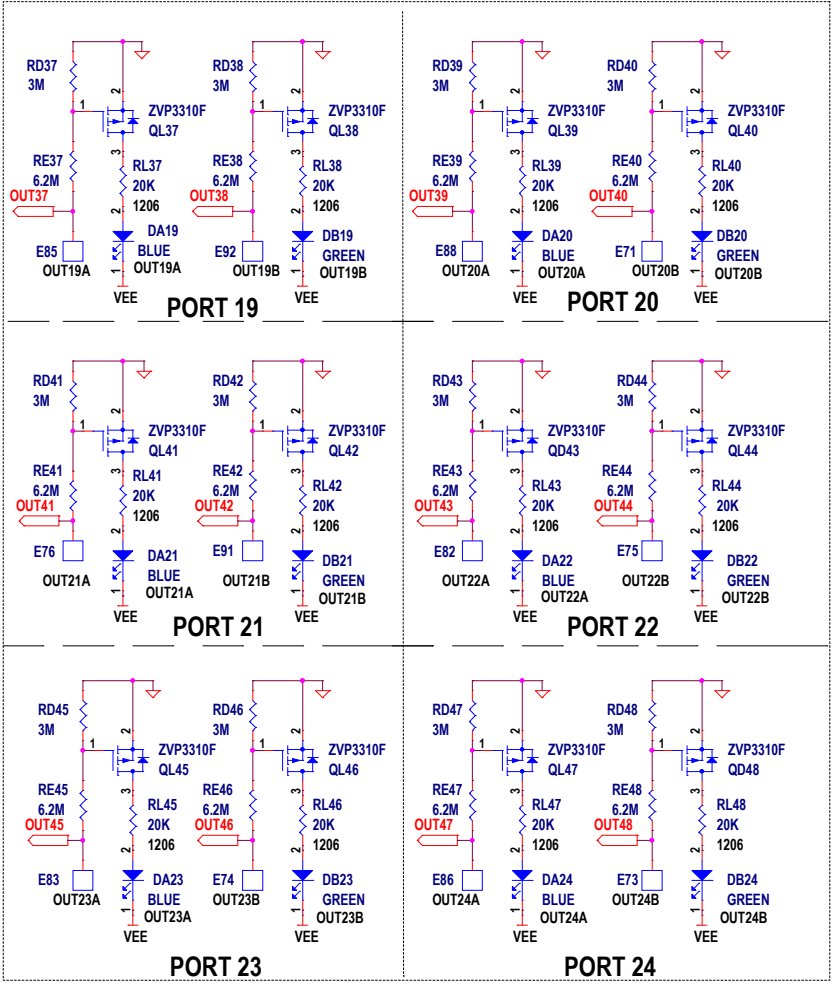
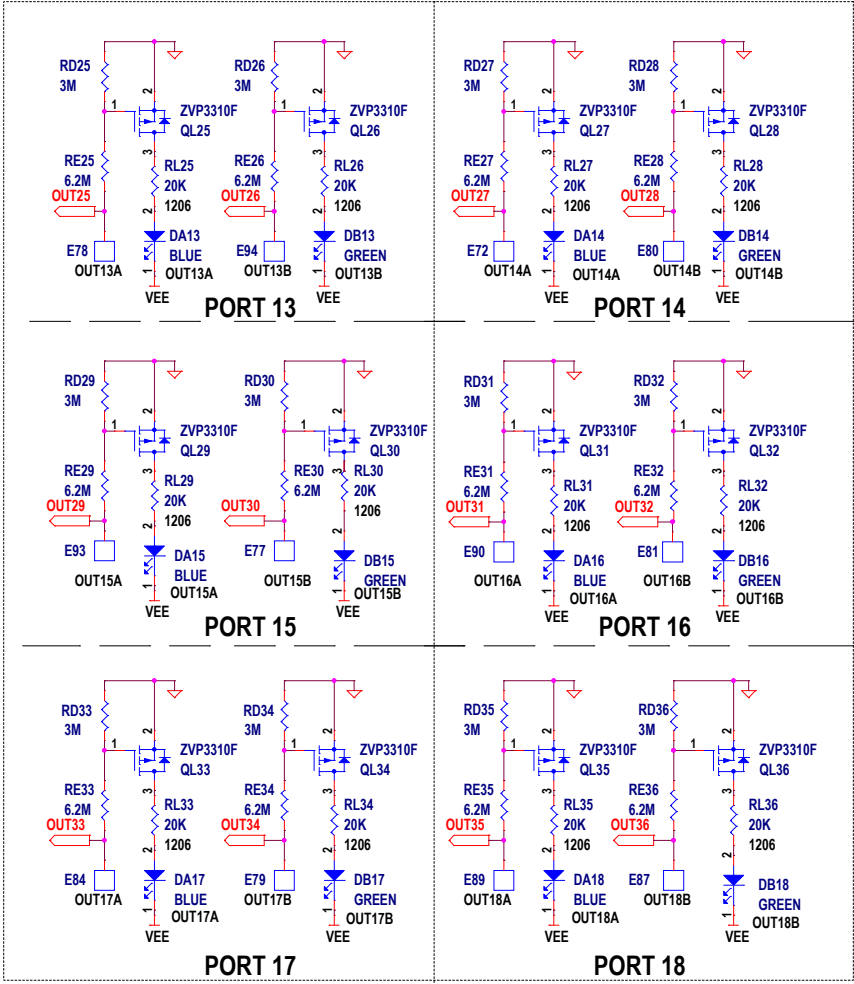
- 1. ALL RESISTORS AND CAPACITORS ARE 0603.
- 2. INSTALL SHUNTS AS SHOWN.

CUSTOMER NOTICE		APPROVALS		 ANALOG DEVICES		 POWER BY LINEAR™	
ANALOG DEVICES HAS MADE A BEST EFFORT TO DESIGN A CIRCUIT THAT MEETS CUSTOMER-SUPPLIED SPECIFICATIONS; HOWEVER, IT REMAINS THE CUSTOMER'S RESPONSIBILITY TO VERIFY PROPER AND RELIABLE OPERATION IN THE ACTUAL APPLICATION. COMPONENT SUBSTITUTION AND PRINTED CIRCUIT BOARD LAYOUT MAY SIGNIFICANTLY AFFECT CIRCUIT PERFORMANCE OR RELIABILITY. CONTACT ANALOG DEVICES APPLICATIONS ENGINEERING FOR ASSISTANCE.		PCB DES.	KEM/M	www.analog.com		Phone: (408)432-1900	
		APP ENG.	ERIC/H				
THIS CIRCUIT IS PROPRIETARY TO ANALOG DEVICES AND SUPPLIED FOR USE WITH ANALOG DEVICES PARTS.		TITLE: SCHEMATIC		24-PORT IEEE 802.3bt PSE MOTHER BOARD			
				IC NO. LTC3839EMSE#TRPBF		SCHEMATIC NO. AND REVISION:	
				SKU NO. DC3017A		710-DC3017A-A_REV03	
				SIZE: N/A		DATE:	
						SHEET 10 OF 11	



REVISION HISTORY				
ECO	REV	DESCRIPTION	APPROVED	DATE
	3			

OPTIONAL PORT LED DRIVERS - PORTS 13 -18

OPTIONAL PORT LED DRIVERS - PORTS 19 -24



NOTE: UNLESS OTHERWISE SPECIFIED
1. ALL RESISTORS AND CAPACITORS ARE 0603.
2. INSTALL SHUNTS AS SHOWN.

CUSTOMER NOTICE		APPROVALS		 ANALOG DEVICES		 POWER BY LINEAR	
ANALOG DEVICES HAS MADE A BEST EFFORT TO DESIGN A CIRCUIT THAT MEETS CUSTOMER-SUPPLIED SPECIFICATIONS; HOWEVER, IT REMAINS THE CUSTOMER'S RESPONSIBILITY TO VERIFY PROPER AND RELIABLE OPERATION IN THE ACTUAL APPLICATION. COMPONENT SUBSTITUTION AND PRINTED CIRCUIT BOARD LAYOUT MAY SIGNIFICANTLY AFFECT CIRCUIT PERFORMANCE OR RELIABILITY. CONTACT ANALOG DEVICES APPLICATIONS ENGINEERING FOR ASSISTANCE.		PCB DES.	KEMM	www.analog.com		Phone: (408)432-1900	
		APP ENG.	ERIC.H				
THIS CIRCUIT IS PROPRIETARY TO ANALOG DEVICES AND SUPPLIED FOR USE WITH ANALOG DEVICES PARTS.		TITLE: SCHEMATIC		24-PORT IEEE 802.3bt PSE MOTHER BOARD			
				IC NO. LTC3839EMSE#TRPBF		SCHEMATIC NO. AND REVISION: 710-DC3017A-A_REV03	
				SKU NO. DC3017A			
				SIZE: N/A DATE:			

HARDWARE

PCA ADDITIONAL PARTS

MP1	STANDOFF,NYLON,SNAP-ON,0.75" (19.1mm)
MP2	STANDOFF,NYLON,SNAP-ON,0.75" (19.1mm)
MP3	STANDOFF,NYLON,SNAP-ON,0.75" (19.1mm)
MP4	STANDOFF,NYLON,SNAP-ON,0.75" (19.1mm)
MP5	STANDOFF,NYLON,SNAP-ON,0.75" (19.1mm)
MP6	STANDOFF,NYLON,SNAP-ON,0.75" (19.1mm)
MP7	STANDOFF,NYLON,SNAP-ON,0.75" (19.1mm)
MP8	STANDOFF,NYLON,SNAP-ON,0.75" (19.1mm)
MP9	STANDOFF,NYLON,SNAP-ON,0.75" (19.1mm)
LB1	BOARD S/N LABEL 895-0154
PCB1	PCB, DC3017A-A REV03 (MAO BANG)
PK1	CONN.,POLARIZING KEY,PLUG,2.54mm PITCH,3.18mm DIM,ST,NATURAL THERMOPLASTIC
PK2	CONN.,POLARIZING KEY,PLUG,2.54mm PITCH,3.18mm DIM,ST,NATURAL THERMOPLASTIC
PK3	CONN.,POLARIZING KEY,PLUG,2.54mm PITCH,3.18mm DIM,ST,NATURAL THERMOPLASTIC

NOTE: UNLESS OTHERWISE SPECIFIED

1. INSTALL SHUNTS AS SHOWN.


CUSTOMER NOTICE


ANALOG DEVICES HAS MADE A BEST EFFORT TO DESIGN A CIRCUIT THAT MEETS CUSTOMER-SUPPLIED SPECIFICATIONS; HOWEVER, IT REMAINS THE CUSTOMER'S RESPONSIBILITY TO VERIFY PROPER AND RELIABLE OPERATION IN THE ACTUAL APPLICATION. COMPONENT SUBSTITUTION AND PRINTED CIRCUIT BOARD LAYOUT MAY SIGNIFICANTLY AFFECT CIRCUIT PERFORMANCE OR RELIABILITY. CONTACT ANALOG DEVICES APPLICATIONS ENGINEERING FOR ASSISTANCE.

THIS CIRCUIT IS PROPRIETARY TO ANALOG DEVICES AND SUPPLIED FOR USE WITH ANALOG DEVICES PARTS.

APPROVALS

PCB DES.	KEN.M
APP ENG.	ERIC.H

**ANALOG DEVICES**
www.analog.com

**POWER BY LINEAR**
Phone: (408)432-1900

TITLE: SCHEMATIC

24-PORT IEEE 802.3bt PSE MOTHER BOARD

IC NO. LTC3639EMSE#TRPBF
SKU NO. DC3017A

SCHEMATIC NO. AND REVISION:
710-DC3017A-A_REV03

SIZE: N/A

DATE:

SHEET 12 OF 0