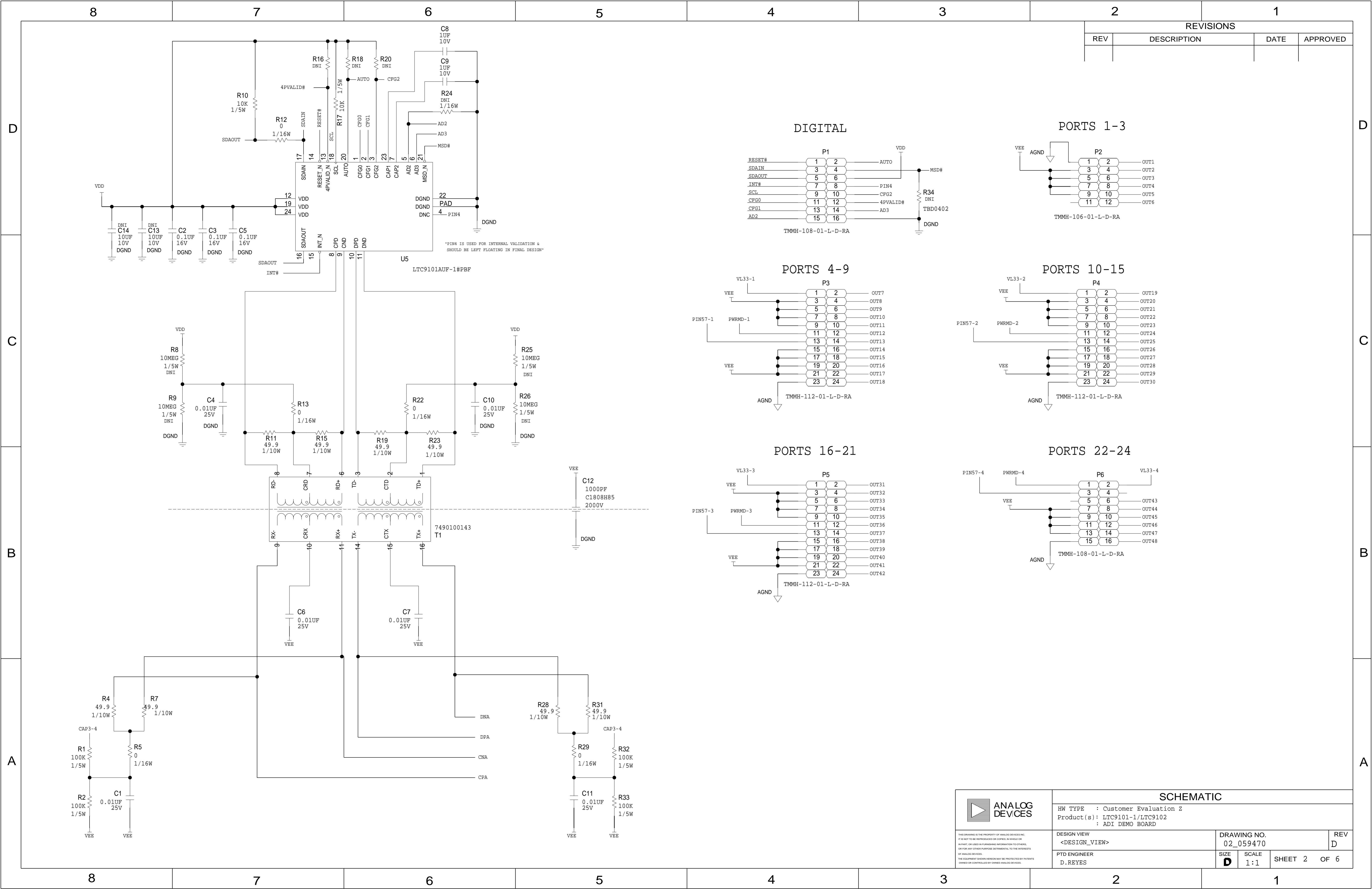
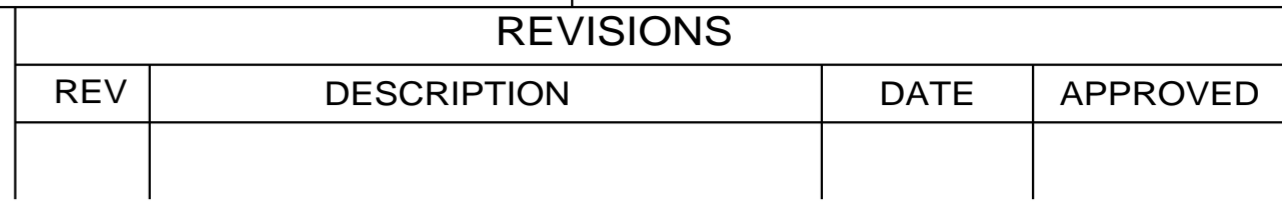


8		7		6		5		4		3		2		1																																																										
D	THIS DRAWING IS THE PROPERTY OF ANALOG DEVICES INC. IT IS NOT TO BE REPRODUCED OR COPIED, IN WHOLE OR IN PART, OR USED IN FURNISHING INFORMATION TO OTHERS, OR FOR ANY OTHER PURPOSE DETRIMENTAL TO THE INTERESTS OF ANALOG DEVICES. THE EQUIPMENT SHOWN HEREON MAY BE PROTECTED BY PATENTS OWNED OR CONTROLLED BY ANALOG DEVICES.					<table><tr><th colspan="3">JUMPER TABLE</th></tr><tr><th>JP#</th><th>ON</th><th>OFF</th></tr><tr><td>1</td><td></td><td></td></tr><tr><td>2</td><td></td><td></td></tr><tr><td>3</td><td></td><td></td></tr><tr><td>4</td><td></td><td></td></tr><tr><td>5</td><td></td><td></td></tr></table> <p>* SEE ASSEMBLY INSTRUCTIONS</p>			JUMPER TABLE			JP#	ON	OFF	1			2			3			4			5			<table><tr><th colspan="4">REVISIONS</th></tr><tr><th>REV</th><th>DESCRIPTION</th><th>DATE</th><th>APPROVED</th></tr><tr><td>A</td><td>INITIAL RELEASE</td><td>28NOV19</td><td>D.REYES</td></tr><tr><td>A1</td><td>AS PER ECR-097342</td><td>31AUG20</td><td>E.HORSMA</td></tr><tr><td>B</td><td>AS PER ECR-098354</td><td>07SEP20</td><td>E.HORSMA</td></tr><tr><td>B1</td><td>AS PER ECR-100158</td><td>19NOV20</td><td>E.HORSMA</td></tr><tr><td>B2</td><td>AS PER ECR-101069</td><td>13JAN21</td><td>E.HORSMA</td></tr><tr><td>C</td><td>AS PER ECR-102115</td><td>15APR21</td><td>E.HORSMA</td></tr><tr><td>D</td><td>AS PER ECR-105021</td><td>26OCT21</td><td>E.HORSMA</td></tr></table>							REVISIONS				REV	DESCRIPTION	DATE	APPROVED	A	INITIAL RELEASE	28NOV19	D.REYES	A1	AS PER ECR-097342	31AUG20	E.HORSMA	B	AS PER ECR-098354	07SEP20	E.HORSMA	B1	AS PER ECR-100158	19NOV20	E.HORSMA	B2	AS PER ECR-101069	13JAN21	E.HORSMA	C	AS PER ECR-102115	15APR21	E.HORSMA	D	AS PER ECR-105021	26OCT21	E.HORSMA
	JUMPER TABLE																																																																							
	JP#	ON	OFF																																																																					
	1																																																																							
	2																																																																							
	3																																																																							
	4																																																																							
	5																																																																							
	REVISIONS																																																																							
	REV	DESCRIPTION	DATE	APPROVED																																																																				
A	INITIAL RELEASE	28NOV19	D.REYES																																																																					
A1	AS PER ECR-097342	31AUG20	E.HORSMA																																																																					
B	AS PER ECR-098354	07SEP20	E.HORSMA																																																																					
B1	AS PER ECR-100158	19NOV20	E.HORSMA																																																																					
B2	AS PER ECR-101069	13JAN21	E.HORSMA																																																																					
C	AS PER ECR-102115	15APR21	E.HORSMA																																																																					
D	AS PER ECR-105021	26OCT21	E.HORSMA																																																																					
RELAY CONTROL CHART																																																																								
CONTROL	CODE	DEVICE	FUNCTION	CONNECTOR																																																																				
C																																																																								
MODEL NAME: DC3159A-B																																																																								
REFERENCE FILES:																																																																								
<table><tr><td>MODEL NAME</td><td>LTC9101 VERSION</td><td>LTC9102 COUNT</td><td>LTC9103 COUNT</td><td>CHANNEL COUNT</td><td>BOARD RECORD SCHEMATIC</td><td>BOARD RECORD BOM</td><td></td></tr><tr><td>DC3159A-A</td><td>-1</td><td>4</td><td>0</td><td>48</td><td>02-059470-01</td><td>05-059470-01</td><td></td></tr><tr><td>DC3159A-B</td><td>-1</td><td>2</td><td>2</td><td>40</td><td>02-059470-02</td><td>05-059470-02</td><td>X</td></tr><tr><td>DC3159A-C</td><td>-2</td><td>4</td><td>0</td><td>48</td><td>02-059470-03</td><td>05-059470-03</td><td></td></tr></table>															MODEL NAME	LTC9101 VERSION	LTC9102 COUNT	LTC9103 COUNT	CHANNEL COUNT	BOARD RECORD SCHEMATIC	BOARD RECORD BOM		DC3159A-A	-1	4	0	48	02-059470-01	05-059470-01		DC3159A-B	-1	2	2	40	02-059470-02	05-059470-02	X	DC3159A-C	-2	4	0	48	02-059470-03	05-059470-03																											
MODEL NAME	LTC9101 VERSION	LTC9102 COUNT	LTC9103 COUNT	CHANNEL COUNT	BOARD RECORD SCHEMATIC	BOARD RECORD BOM																																																																		
DC3159A-A	-1	4	0	48	02-059470-01	05-059470-01																																																																		
DC3159A-B	-1	2	2	40	02-059470-02	05-059470-02	X																																																																	
DC3159A-C	-2	4	0	48	02-059470-03	05-059470-03																																																																		
B																																																																								
A																																																																								
<table><tr><td>TEMPLATE ENGINEER -</td><td>DATE</td><td colspan="3" rowspan="2">SCHEMATIC</td><td rowspan="2"></td></tr><tr><td>HARDWARE SERVICES M.JOSE</td><td>28NOV19</td></tr><tr><td>HARDWARE SYSTEMS -</td><td></td><td colspan="4" rowspan="4">HW TYPE : Customer Evaluation Z Product(s): LTC9101-1/LTC9102 : ADI DEMO BOARD PACKAGE : LeadCount-lead BodySize PackageType-family : Pitch-pitch StyleVendor Style <User Define> <User Define> <User Define></td></tr><tr><td>TEST ENGINEER -</td><td></td></tr><tr><td>COMPONENT ENGINEER A.CAUILAN</td><td>28NOV19</td></tr><tr><td>TEST PROCESS -</td><td></td></tr><tr><td>HARDWARE RELEASE K.JABATAN</td><td>28NOV19</td><td colspan="4"></td></tr><tr><td>DESIGNER N.CORDOVA</td><td>28NOV19</td><td>MASTER PROJECT TEMPLATE TBD</td><td>TESTER TEMPLATE no_template</td><td colspan="2">DRAWING NO. 02_059470</td><td>REV. D</td></tr><tr><td>PTD ENGINEER D.REYES</td><td>28NOV19</td><td colspan="3" rowspan="2">UNLESS OTHERWISE SPECIFIED DIMENSIONS ARE IN INCHES TOLERANCES DECIMALS X.XX +0.010 X.XXX +0.005 FRACTIONS +1/32 ANGLES +2</td><td>SIZE D</td><td>SCALE 1:1</td><td>CODE ID NO. CodeID</td><td>SHEET 1</td><td>OF 6</td></tr><tr><td>CHECKER E.HORSMA</td><td>28NOV19</td></tr></table>					TEMPLATE ENGINEER -	DATE	SCHEMATIC				HARDWARE SERVICES M.JOSE	28NOV19	HARDWARE SYSTEMS -		HW TYPE : Customer Evaluation Z Product(s): LTC9101-1/LTC9102 : ADI DEMO BOARD PACKAGE : LeadCount-lead BodySize PackageType-family : Pitch-pitch StyleVendor Style <User Define> <User Define> <User Define>				TEST ENGINEER -		COMPONENT ENGINEER A.CAUILAN	28NOV19	TEST PROCESS -		HARDWARE RELEASE K.JABATAN	28NOV19					DESIGNER N.CORDOVA	28NOV19	MASTER PROJECT TEMPLATE TBD	TESTER TEMPLATE no_template	DRAWING NO. 02_059470		REV. D	PTD ENGINEER D.REYES	28NOV19	UNLESS OTHERWISE SPECIFIED DIMENSIONS ARE IN INCHES TOLERANCES DECIMALS X.XX +0.010 X.XXX +0.005 FRACTIONS +1/32 ANGLES +2			SIZE D	SCALE 1:1	CODE ID NO. CodeID	SHEET 1	OF 6	CHECKER E.HORSMA	28NOV19																							
TEMPLATE ENGINEER -	DATE	SCHEMATIC																																																																						
HARDWARE SERVICES M.JOSE	28NOV19																																																																							
HARDWARE SYSTEMS -		HW TYPE : Customer Evaluation Z Product(s): LTC9101-1/LTC9102 : ADI DEMO BOARD PACKAGE : LeadCount-lead BodySize PackageType-family : Pitch-pitch StyleVendor Style <User Define> <User Define> <User Define>																																																																						
TEST ENGINEER -																																																																								
COMPONENT ENGINEER A.CAUILAN	28NOV19																																																																							
TEST PROCESS -																																																																								
HARDWARE RELEASE K.JABATAN	28NOV19																																																																							
DESIGNER N.CORDOVA	28NOV19	MASTER PROJECT TEMPLATE TBD	TESTER TEMPLATE no_template	DRAWING NO. 02_059470		REV. D																																																																		
PTD ENGINEER D.REYES	28NOV19	UNLESS OTHERWISE SPECIFIED DIMENSIONS ARE IN INCHES TOLERANCES DECIMALS X.XX +0.010 X.XXX +0.005 FRACTIONS +1/32 ANGLES +2			SIZE D	SCALE 1:1	CODE ID NO. CodeID	SHEET 1	OF 6																																																															
CHECKER E.HORSMA	28NOV19																																																																							
P.O SPEC.	BK/BD SPEC.	SOCKET OEM	OEM PART#	HANDLER																																																																				
8		7		6		5		4		3		2		1																																																										




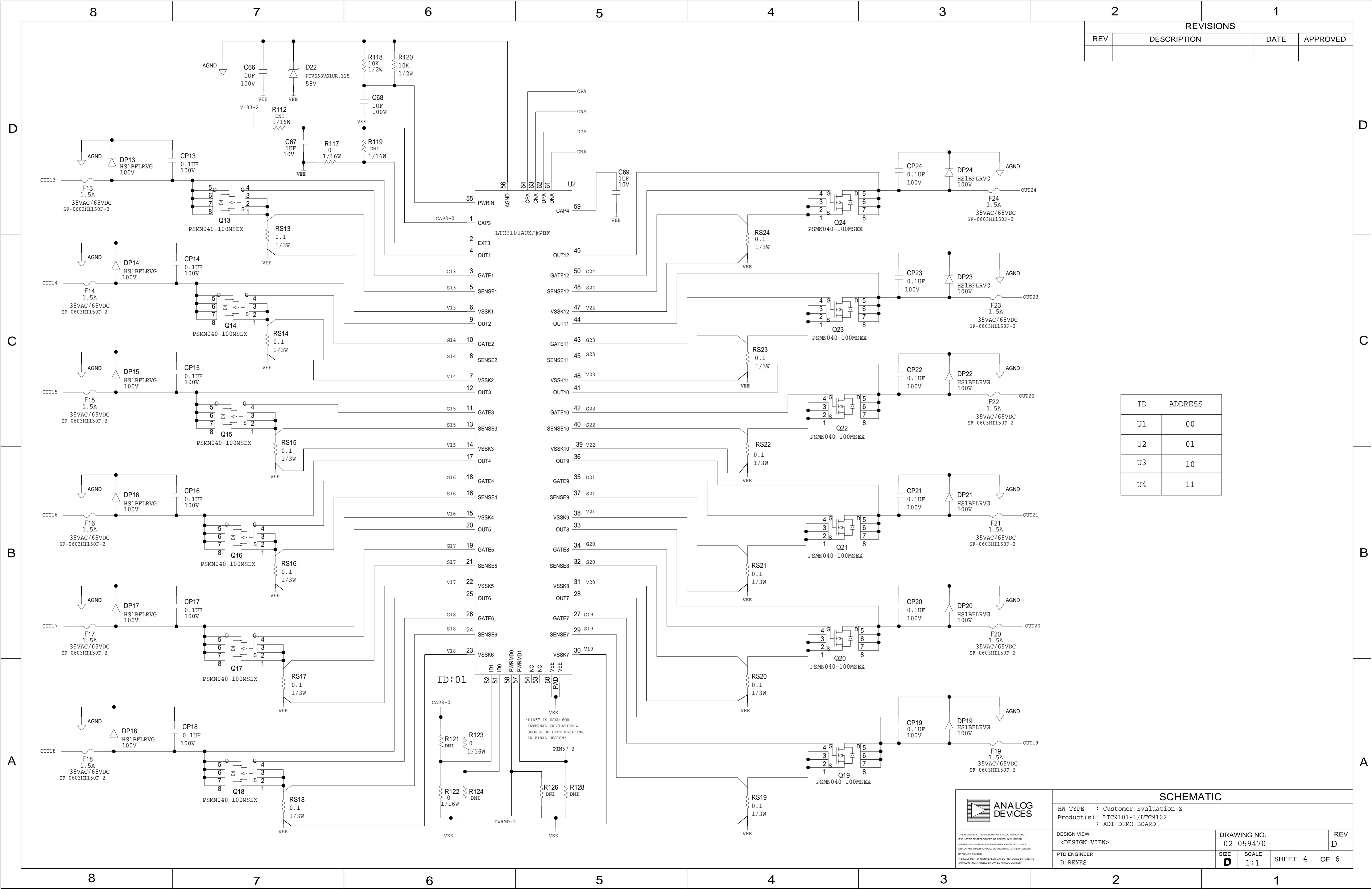
REVISIONS			
REV	DESCRIPTION	DATE	APPROVED

SCHEMATIC			
HW TYPE : Customer Evaluation Z Product(s): LTC9101-1/LTC9102 : ADI DEMO BOARD			
DESIGN VIEW <DESIGN_VIEW>	DRAWING NO. 02_059470	REV D	
PTD ENGINEER D.REYES	SIZE D	SCALE 1:1	SHEET 2 OF 6

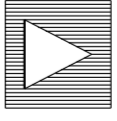


ID	ADDRESS
U1	00
U2	01
U3	10
U4	11

 ANALOG DEVICES	<h1 style="margin: 0;">SCHEMATIC</h1>				
	HW TYPE : Customer Evaluation Z Product(s) : LTC9101-1/LTC9102 : ADI DEMO BOARD				
<small>THIS DRAWING IS THE PROPERTY OF ANALOG DEVICES INC. IT IS NOT TO BE REPRODUCED OR COPIED IN WHOLE OR IN PART, OR USED IN FURNISHING INFORMATION TO OTHERS, OR FOR ANY OTHER PURPOSE WITHOUT WRITTEN PERMISSION OF ANALOG DEVICES. THE EQUIPMENT DESIGNATION MAY BE PROTECTED BY PATENTS OWNED OR CONTROLLED BY OWNED ANALOG DEVICES.</small>	DESIGN VIEW <DESIGN_VIEW>		DRAWING NO. 02_059470		REV D
	PTD ENGINEER D. RYES		SIZE D	SCALE 1:1	SHEET 3 OF 6



ID	ADDRESS
U1	00
U2	01
U3	10
U4	11

**ANALOG
DEVICES**

SCHEMATIC

HW TYPE : Customer Evaluation Z
Product(s) : LTC9101-1/LTC9102
: ADI DEMO BOARD

DESIGN VIEW
<DESIGN_VIEW>

PTD ENGINEER
D.REYES

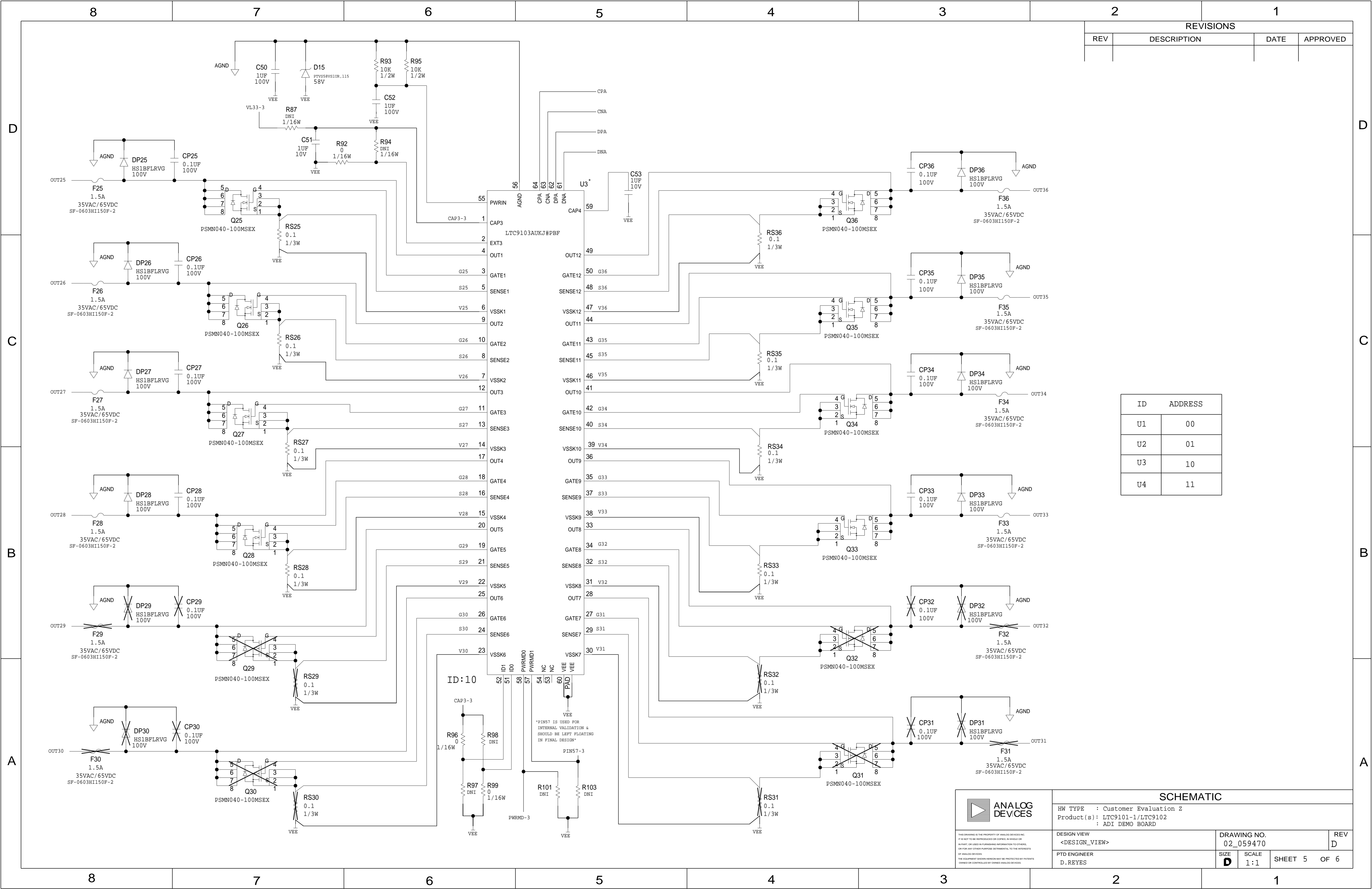
DRAWING NO.
02_059470

REV
D

SIZE
D

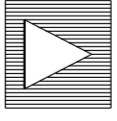
SCALE
1:1

SHEET 4 OF 6



REVISIONS			
REV	DESCRIPTION	DATE	APPROVED

ID	ADDRESS
U1	00
U2	01
U3	10
U4	11



**ANALOG
DEVICES**

THIS DRAWING IS THE PROPERTY OF ANALOG DEVICES INC.
IT IS NOT TO BE REPRODUCED OR COPIED, IN WHOLE OR
IN PART, OR USED IN FURNISHING INFORMATION TO OTHERS,
OR FOR ANY OTHER PURPOSE DETRIMENTAL TO THE INTERESTS
OF ANALOG DEVICES.
THE EQUIPMENT SHOWN HEREON MAY BE PROTECTED BY PATENTS
OWNED OR CONTROLLED BY ANALOG DEVICES.

SCHEMATIC

HW TYPE : Customer Evaluation Z
Product(s) : LTC9101-1/LTC9102
: ADI DEMO BOARD

DESIGN VIEW
<DESIGN_VIEW>

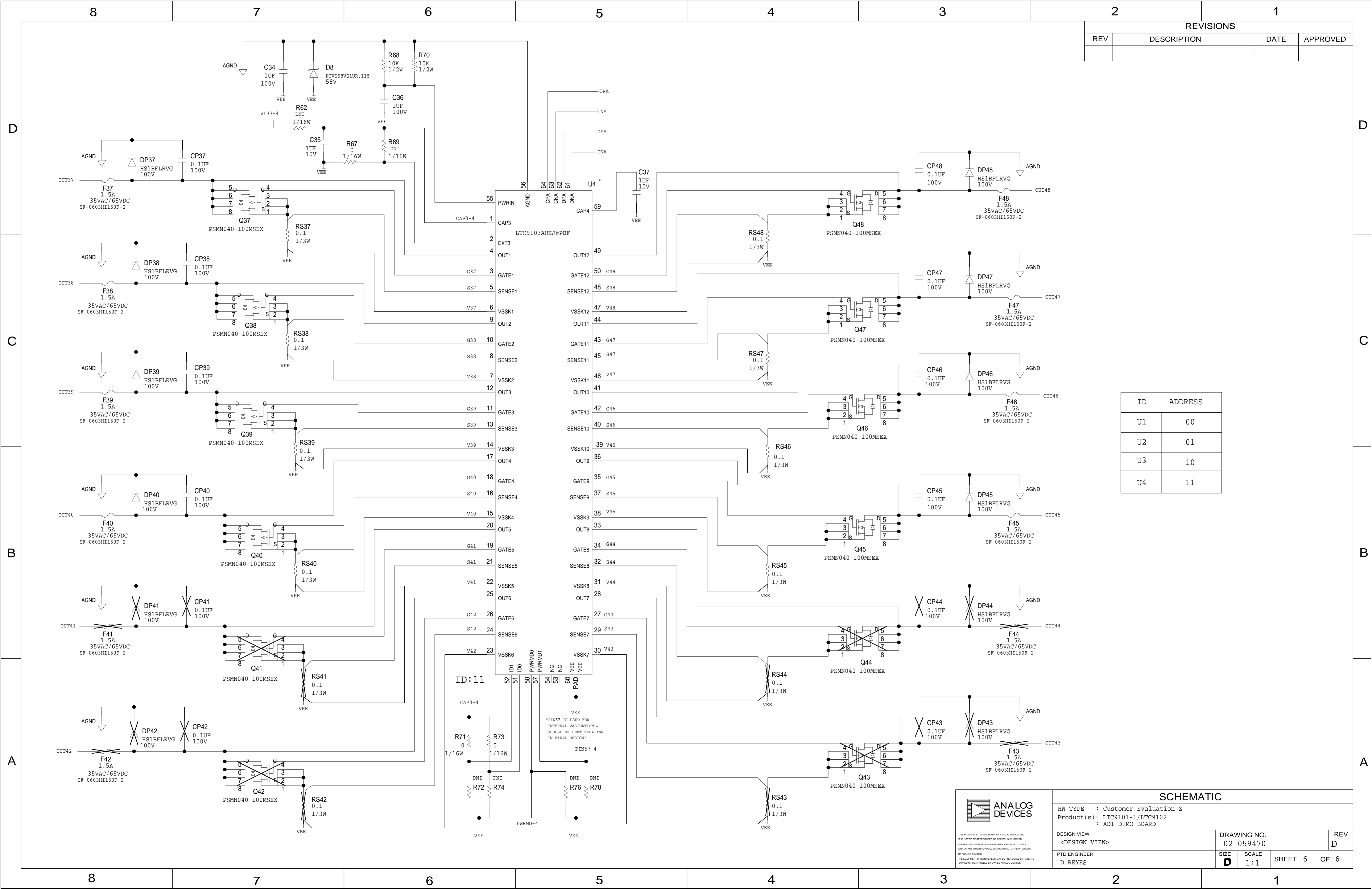
PTD ENGINEER
D. REYES

DRAWING NO.
02_059470

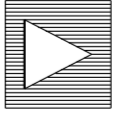
SIZE **D** SCALE 1:1

REV
D

SHEET 5 OF 6



REVISIONS			
REV	DESCRIPTION	DATE	APPROVED



**ANALOG
DEVICES**

HW TYPE : Customer Evaluation Z
Product(s) : LTC9101-1/LTC9102
: ADI DEMO BOARD

DESIGN VIEW
<DESIGN_VIEW>

PTD ENGINEER
D.REYES

DRAWING NO.
02_059470

REV
D

SIZE
D

SCALE
1:1

SHEET 6 OF 6

*PIN57 IS USED FOR
INTERNAL VALIDATION &
SHOULD BE LEFT FLOATING
IN FINAL DESIGN*