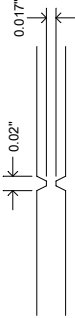


REVISION HISTORY				
ECO	REV	DESCRIPTION	APPROVED	DATE
-	2	PRODUCTION	KEITH B.	09-10-10

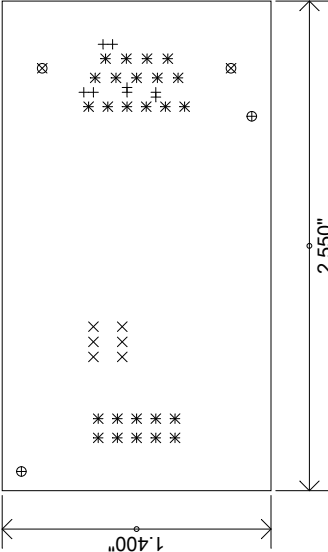
NOTES: UNLESS OTHERWISE SPECIFIED

1. FAB PER IPC-A-600
2. MATERIAL:
 - EPOXY FIBERGLASS, NEMA GRADE FR-4
 - FINISHED THICKNESS TO BE 0.062" +/- .005"
 - TOTAL OF 4 LAYERS WITH 1 OZ. CU ON THE OUTER LAYERS AND 1 OZ. CU ON THE INNER LAYERS
 - FLAMMABILITY RATING: 94V-0 MINIMUM
3. SIZE: CUT TO DIMENSIONS AND TOLERANCES SHOWN
4. DRILLING:
 - DRILL HOLES PER SCHEDULE: PLATE THROUGH HOLES WITH COPPER, 0.001" THICK MIN.
 - ALL HOLE SIZES ARE SPECIFIED AFTER PLATING
 - HOLE LOCATION TOLERANCES ARE +/- 0.003" IN RELATION TO CENTER
 - SMOBC USING LPI BOTH SIDES, COLOR GREEN
 - GOLD IMMERSION BOTH SIDES
5. FINISH:
 - FOR SILKSCREEN: TOP SIDE USE WHITE NON-CONDUCTIVE INK (LEAD FREE SOLDER MAY BE USED FOR PROTOTYPE)
6. DO NOT ALTER ARTWORK e.g. TO ADD LOGO OR DATE CODE.
 - PAD SIZE MAY BE MODIFIED TO MEET END FINISH.
7. PCBs ARE TO BE ROHS COMPLIANT
8. DESIGN HAS SOLDER MASK DEFINED PADS ON U1.
 - U1 SOLDER MASK SIZE IS 25 MIL AND PAD SIZE IS 29 MIL.
 - DO NOT CHANGE ANY SIZE ON THIS COMPONENT.
9. SCORING FOR PANELIZED PCB:

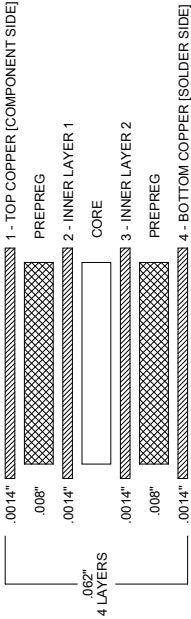



SIZE	QTY	SYM	PLATED	TOL
0.010"	8	+	YES	+/-0.003"
0.032"	6	X	YES	+/-0.003"
0.040"	25	*	YES	+/-0.003"
0.070"	2	⊕	NO	+/-0.003"
0.120"	2	⊗	NO	+/-0.003"

SHOWN FROM COMPONENT SIDE



LAYER STRUCTURE



UNLESS OTHERWISE SPECIFIED		APPROVALS		 LINEAR TECHNOLOGY		1630 McCarthy Blvd. Milpitas, CA 95035 Phone: (408) 432-1900 Fax: (408) 434-0507 www.linear.com		LTC CONFIDENTIAL FOR CUSTOMER USE ONLY					
DIMENSIONS ARE IN INCHES TOLERANCES: 0.XX" = +/- 0.01" 0.XXX" = +/- 0.005" INTERPRET DIM AND TOL PER ASME Y14.5M-1994		PCB DES.	KEITH B.			TITLE: SCHEMATIC DUAL RS232 uMODULE ISOLATOR, LOW EMI		SIZE N/A		IC NO. LTM2882CY-3/-5 DEMO CIRCUIT 1747A		REV. 2	
		APP ENG.	KEITH B.										
THIRD ANGLE PROJECTION													
		SCALE = 1:1		DATE: Friday September 10, 2010		SHEET 1 OF 1							