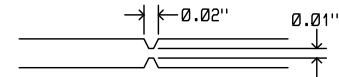


REVISION HISTORY

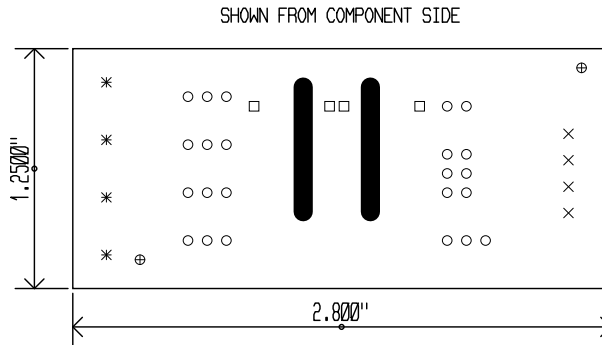
ECO	REV	DESCRIPTION	APPROVED	DATE
-	3	3RD PROTOTYPE	KEITH B.	10-13-14

NOTES: UNLESS OTHERWISE SPECIFIED

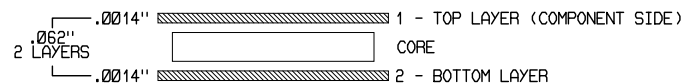
- FAB PER IPC-A-600
- MATERIAL: -LEAD FREE ASSEMBLY COMPLIANT, ISOLA FR-370HR or EQUIVALENT.
-FINISHED THICKNESS TO BE 0.062" +/- .005".
-TOTAL OF 2 LAYERS WITH 1 OZ. CU
-FLAMMABILITY RATING: 94 V-0 MINIMUM.
- SIZE: CUT TO DIMENSIONS AND TOLERANCES SHOWN
- DRILLING: -DRILL HOLES PER SCHEDULE. PLATE THROUGH HOLES WITH COPPER, 0.001" THICK MIN.
-ALL HOLE SIZES ARE SPECIFIED AFTER PLATING
-HOLE LOCATION TOLERANCES ARE +/- 0.003" IN RELATION TO CENTER
- FINISH: -SMOBC USING LPI BOTH SIDES, COLOR GREEN MATTE.
-GOLD IMMERSION (ENIG) BOTH SIDES.
-SILKSCREEN BOTH SIDES WITH WHITE NON-CONDUCTIVE INK.
- DO NOT ALTER ARTWORK e.g. TO ADD LOGO OR DATE CODE.
PAD SIZE MAY BE MODIFIED TO MEET END FINISH.
- PCBS ARE TO BE RoHS COMPLIANT.
- U1 SOLDER MASK SIZE IS 32 MIL AND PAD SIZE IS 25 MIL.
DO NOT CHANGE ANY SIZE ON THIS COMPONENT.
- SCORING FOR PANELIZED PCB, SCORING ANGLE 30 DEG.:


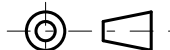


SIZE	QTY	SYM	PLATED	TOL
0.030"	4	□	YES	+/-0.003"
0.040"	23	○	YES	+/-0.003"
0.050"	4	×	YES	+/-0.003"
0.070"	2	⊕	NO	+/-0.003"
0.096"	4	*	YES	+/-0.003"



LAYER STRUCTURE



UNLESS OTHERWISE SPECIFIED		APPROVALS		 <p>1630 McCarthy Blvd. Milpitas, CA 95035 Phone: (408) 432-1900 Fax: (408) 434-0507 www.linear.com</p>	LTC CONFIDENTIAL FOR CUSTOMER USE ONLY
DIMENSIONS ARE IN INCHES TOLERANCES: 0.XX" = +/- 0.01" 0.XXX" = +/- 0.005" INTERPRET DIM AND TOL PER ASME Y14.5M-1994		PCB DES.	KEITH B.		
THIRD ANGLE PROJECTION		APP ENG.	KEITH B.		
					
TITLE: FABRICATION DRAWING REINFORCED RS485 ISOLATOR				<p>SIZE N/A IC NO. LTM2885IY DEMO CIRCUIT 1794A</p>	REV. 3
SCALE = 1:1				DATE: Monday October 13, 2014	
				SHEET 1 OF 1	