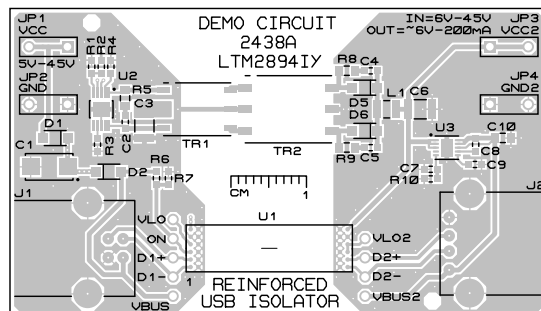



REVISION HISTORY				
ECO	REV	DESCRIPTION	APPROVED	DATE
-	2	2ND PROTOTYPE	KWB	11-10-15

NOTES: UNLESS OTHERWISE SPECIFIED

1. WORKMANSHIP SHALL BE IN ACCORDANCE WITH IPC-A-610
2. MAXIMUM SOLDER TEMPERATURE IS 250 DEGREES CELSIUS
3. DEPANELIZE BOARDS AFTER ASSEMBLY AND ROUTE-OUT THE BREAKOUT TABS ON FOUR SIDES OF THE BOARD
4. PARTS TO OMIT WILL BE SPECIFIED ON THE BILL OF MATERIALS. LOCATIONS OF OMITTED PARTS SHALL BE FREE OF SOLDER. MASK THE SOLDER STENCIL WHERE SMT PARTS ARE OMITTED.
5. ASSEMBLY PROCESS SHALL INCLUDE: REFLOW SOLDER TOP SIDE SMD
6. DO NOT APPLY ANY KIND OF ASSEMBLY STAMP OR QA STAMP TO ANY BOARD



TOP SILKSCREEN LAYER
 LINEAR TECHNOLOGY
 DC2438A-2 * LTM2894IY
 REINFORCED USB ISOLATOR
 DATE: 11-10-15

APPROVALS				1630 McCarthy Blvd. Milpitas, CA 95035 Phone: (408) 432-1900 Fax: (408) 434-0507 www.linear.com		LTC CONFIDENTIAL FOR CUSTOMER USE ONLY			
PCB DES.	KWB								
APP ENG.	KWB								
		TITLE: TOP ASSEMBLY DRAWING REINFORCED USB ISOLATOR							
		SIZE	IC NO.				REV.		
		N/A	LTM2894IY DEMO CIRCUIT 2438A				2		
SCALE = 1:1		DATE: Tuesday, November 10th, 2015				SHEET 1 OF 1			