

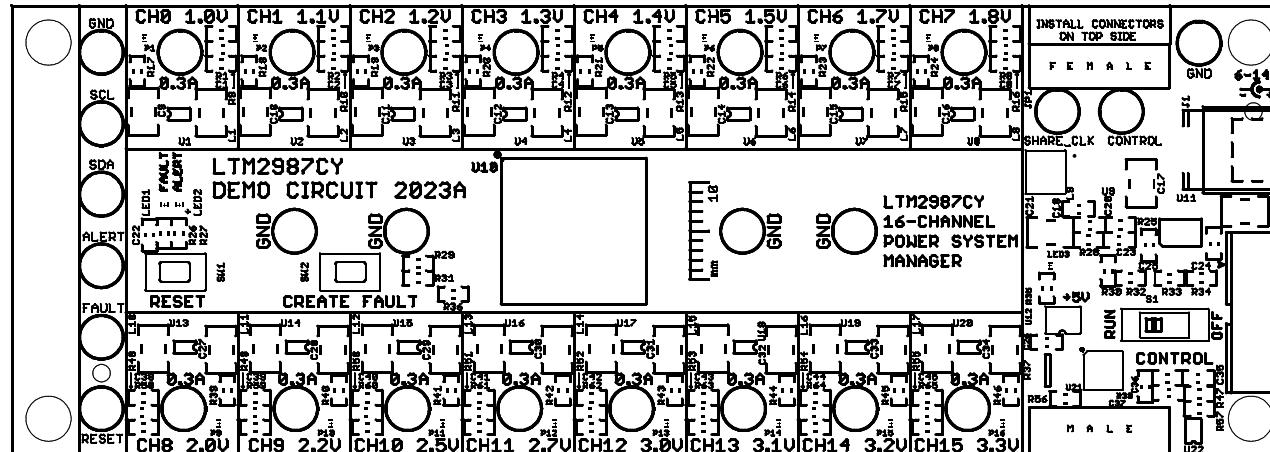
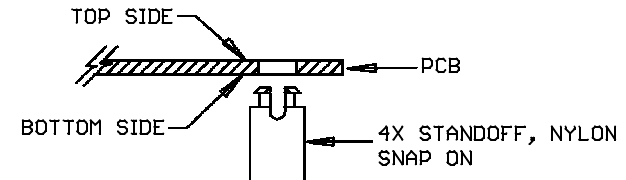
# REVISION HISTORY

ECO	REV	DESCRIPTION	APPROVED	DATE
-	1	PRODUCTION	MIKE P.	01/29/2013

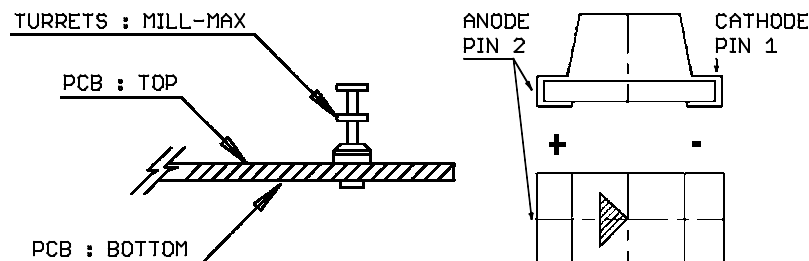
## NOTES: UNLESS OTHERWISE SPECIFIED


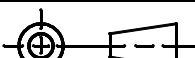
1. WORKMANSHIP SHALL BE IN ACCORDANCE WITH IPC-A-610.
2. PARTS TO OMIT WILL BE SPECIFIED ON THE BILL OF MATERIALS. MASK THE SOLDER STENCIL WHERE SMT PARTS ARE OMITTED.
3. DEPANELIZE BOARDS AFTER ASSEMBLY AND ROUTE-OUT THE BREAKOUT TABS ON 4 SIDES OF THE BOARD EDGE.
4. ASSY PROCESS SHALL INCLUDE: REFLOW SOLDER TOP SIDE SMD.
5. DO NOT APPLY ANY KIND OF ASSEMBLY STAMP OR QA STAMP ON ANY BOARD.

6. INSTALL 4 STANDOFFS AT 4 CORNERS FROM THE BOTTOM SIDE.

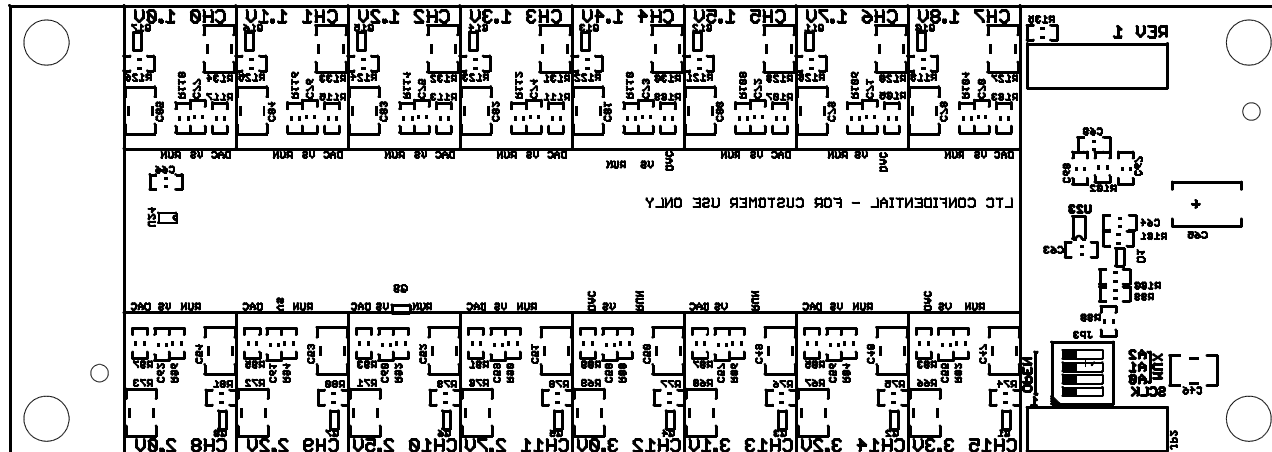


7. INSTALL TURRETS and LEDS AS SHOWN BELOW:



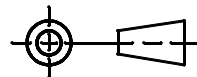
UNLESS OTHERWISE SPECIFIED DIMENSIONS ARE IN INCHES TOLERANCES ON ANGLE +/- 1° 0.XXX" = +/- 0.01" 0.XXX" = +/- 0.005" INTERPRET DIM AND TOL PER ASME Y14.5M-1994	APPROVALS			 LINEAR TECHNOLOGY  1630 MCCARTHY BLVD. MILPITAS, CA 95033 PH: (408) 432-1800 LTC CONFIDENTIAL FOR CUSTOMER USE ONLY		
		NAME	DATE			
	PCB DES.	R.S.	01-29-13			
	ENG	MIKE P.	01-28-13			
THIRD ANGLE PROJECTION				TITLE: TOP ASSEMBLY DRAWING LTM2987CY 16-CHANNEL POWER SYSTEM MANAGER		
						
DO NOT SCALE DRAWING	SCALE: NONE			SIZE N/A	IC NO. LTM2987 DEMO CIRCUIT 2023A	REV 1
			FILENAME: DC2023A_Rev1		SHEET 1 OF 13	

REVISION HISTORY				
ECO	REV	DESCRIPTION	APPROVED	DATE
-	1	PRODUCTION	MIKE P.	01/29/2013



UNLESS OTHERWISE SPECIFIED  
DIMENSIONS ARE IN INCHES  
TOLERANCES ON ANGLE  $\pm 1^\circ$   
 $0.XX^\circ = \pm 0.01^\circ$   
 $0.XXX^\circ = \pm 0.005^\circ$   
INTERPRET DIM AND TOL  
PER ASME Y14.5M-1994

### THIRD ANGLE PROJECTION



DO NOT SCALE DRAWING

## APPROVALS

	NAME	DATE
PCB DES.	R.S.	01-29-13
ENG	MIKE P.	01-29-13



1630 MCCARTHY BLVD.  
MILPITAS, CA 95033  
PH: (408) 432-1800  
LTC CONFIDENTIAL  
FOR CUSTOMER USE ONLY

TITLE: BOTTOM ASSEMBLY DRAWING  
LTM2987CY 16-CHANNEL  
POWER SYSTEM MANAGER

SIZE	N/A
------	-----

IC NO.	LTM2987
	DEMO CIRCUIT 2023A

REV 1

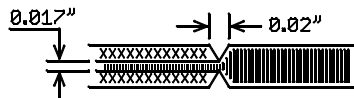
FILENAME: DC2023A\_Rev1

**SHEET 2 OF 13**

## NOTES: UNLESS OTHERWISE SPECIFIED

- FAB PER IPC-A-600.
- MATERIAL: EPOXY FIBERGLASS, NEMA GRADE FR-4  
FINISHED THICKNESS TO BE 0.062" +/-0.005"  
4-LAYER BOARD, 2 OZ. CU ON OUTER LAYERS,  
1 OZ. CU ON INNER LAYERS,  
FLAMMABILITY RATING: 94 V-2 MINIMUM.
- SIZE: CUT TO DIMENSIONS AND TOLERANCES SHOWN.  
0.00" ARE PRIMARY DATUMS.
- FINISH: SMOBC USING LPI BOTH SIDES, COLOR BLACK.  
ENIG FINISH. LEAD FREE SOLDER CAN BE USED  
FOR PROTOTYPE BOARDS.  
HIGH DEFINITION WHITE SILKSCREEN.

- DRILL: PLATE THRU ALL HOLES WITH COPPER, 0.001"  
THICK MIN. ALL HOLES SHALL BE DRILLED  
+/-0.003" WITH RESPECT TO CTR. OF DRILLED  
PAD. ALL HOLES FINISHED SIZE AFTER PLATING.
- DROP ALL UNUSED PADS ON INNER LAYERS.
- DO NOT ALTER ARTWORK e.g. TO ADD LOGO OR DATE CODE.  
PAD SIZE CAN BE MODIFIED TO MEET END FINISH.
- PCBS ARE TO BE RoHS COMPLIANT.
- SCORING FOR PANELIZED PCB:

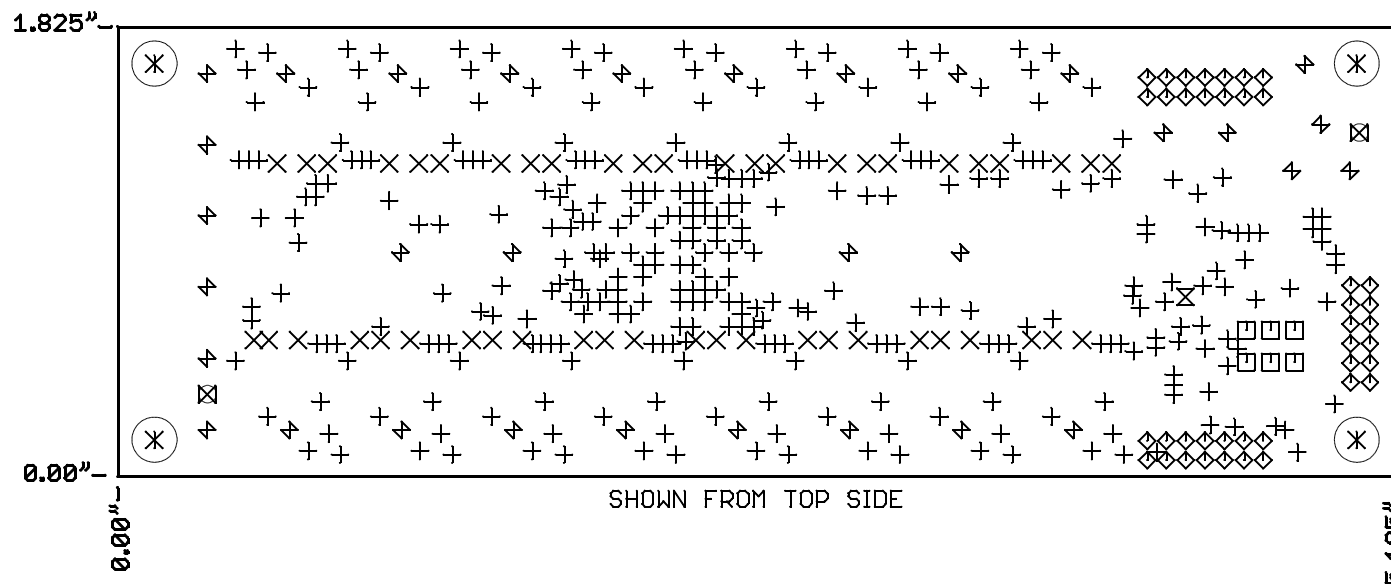


## REVISION HISTORY

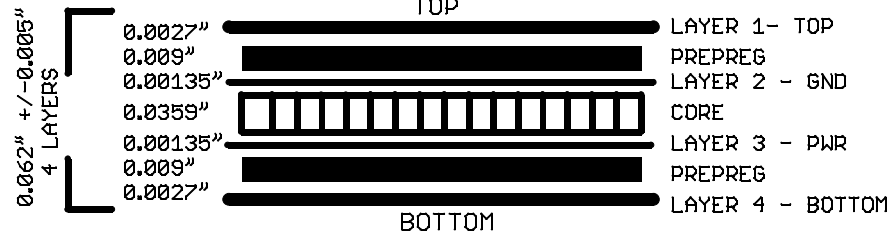
ECO	REV	DESCRIPTION	APPROVED	DATE
-	1	PRODUCTION	MIKE P.	01/29/2013

## DRILL TABLE

Sym	Nº	Mils	MM	Qty	Plated
+	1	10	0.25	326	YES
X	2	15	0.38	48	YES
□	3	35	0.90	6	YES
◇	4	36	0.91	40	YES
⊗	5	67	1.70	1	YES
⊗	6	71	1.80	2	NOT
⊕	7	96	2.44	29	YES
⊕	8	118	3.00	3	YES
⊗	9	183	4.65	4	NOT



## LAYER STRUCTURE

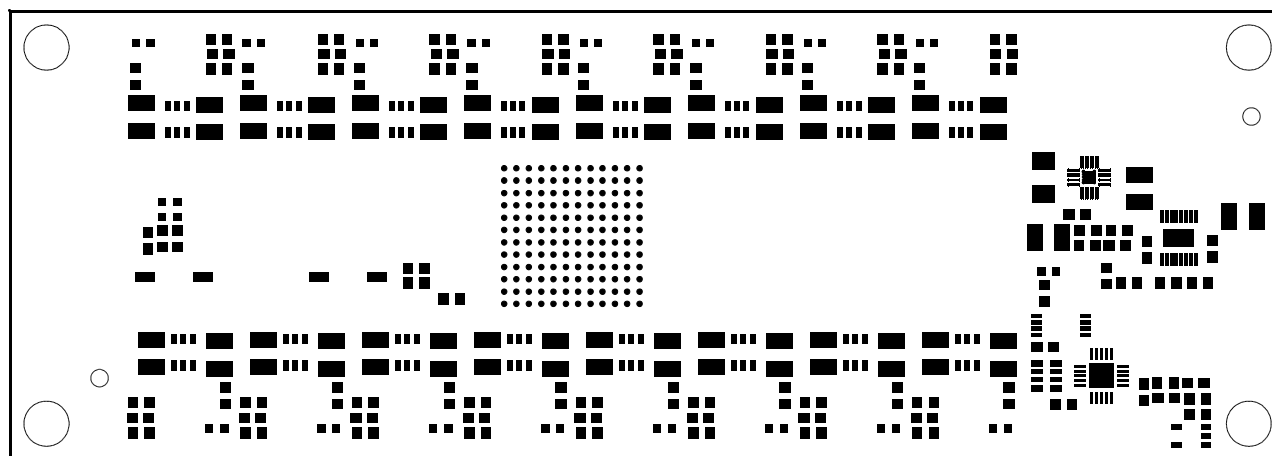


UNLESS OTHERWISE SPECIFIED DIMENSIONS ARE IN INCHES TOLERANCES ON ANGLE +/- 1° 0.XX" = +/- 0.01" 0.XXX" = +/- 0.005" INTERPRET DIM AND TOL PER ASME Y14.5M-1994		<b>APPROVALS</b>			1630 MCCARTHY BLVD. MILPITAS, CA 95033 PH: (408) 432-1800 LTC CONFIDENTIAL FOR CUSTOMER USE ONLY	
		PCB DES.	R.S.		DATE	TITLE: FABRICATION DRAWING LTM2987CY 16-CHANNEL POWER SYSTEM MANAGER
THIRD ANGLE PROJECTION		ENG	MIKE P.	01-29-13	SIZE	IC NO. LTM2987
					N/A	DEMO CIRCUIT 2023A
						REV 1
DO NOT SCALE DRAWING		SCALE: NONE		FILENAME: DC2023A_Rev1		SHEET 3 OF 13



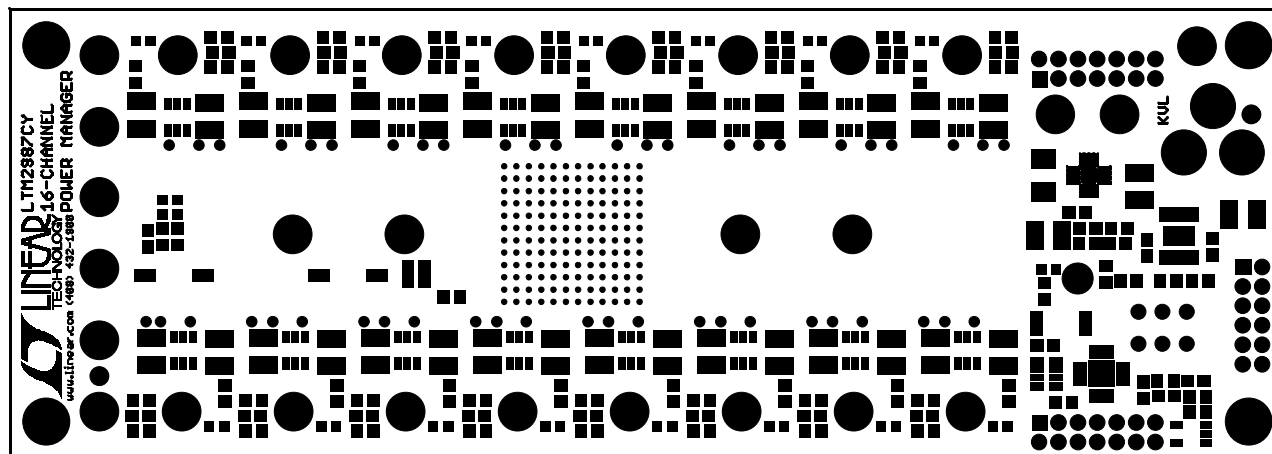
# REVISION HISTORY


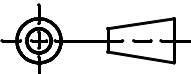
ECO	REV	DESCRIPTION	APPROVED	DATE
-	1	PRODUCTION	MIKE P.	01/29/2013



<p>UNLESS OTHERWISE SPECIFIED DIMENSIONS ARE IN INCHES TOLERANCES ON ANGLE +/- 1° 0.XXX" = +/- 0.01" 0.XXX" = +/- 0.005" INTERPRET DIM AND TOL PER ASME Y14.5M-1994</p> <p>THIRD ANGLE PROJECTION</p> <p>DO NOT SCALE DRAWING</p>	<p><b>APPROVALS</b></p> <table border="1"> <tr> <th></th> <th>NAME</th> <th>DATE</th> </tr> <tr> <td>PCB DES.</td> <td>R.S.</td> <td>01-29-13</td> </tr> <tr> <td>ENG</td> <td>MIKE P.</td> <td>01-29-13</td> </tr> </table>				NAME	DATE	PCB DES.	R.S.	01-29-13	ENG	MIKE P.	01-29-13	<p><b>LINEAR TECHNOLOGY</b></p> <p>1630 MCCARTHY BLVD. MILPITAS, CA 95033 PH: (408) 432-1500 LTC CONFIDENTIAL FOR CUSTOMER USE ONLY</p>	
		NAME	DATE											
	PCB DES.	R.S.	01-29-13											
	ENG	MIKE P.	01-29-13											
<p>TITLE: TOP PASTE LTM2987CY 16-CHANNEL POWER SYSTEM MANAGER</p>														
<p>SIZE N/A</p>		<p>IC NO. LTM2987 DEMO CIRCUIT 2023A</p>		<p>REV 1</p>										
<p>SCALE: NONE</p>		<p>FILENAME: DC2023A_Rev1</p>		<p>SHEET 5 OF 13</p>										

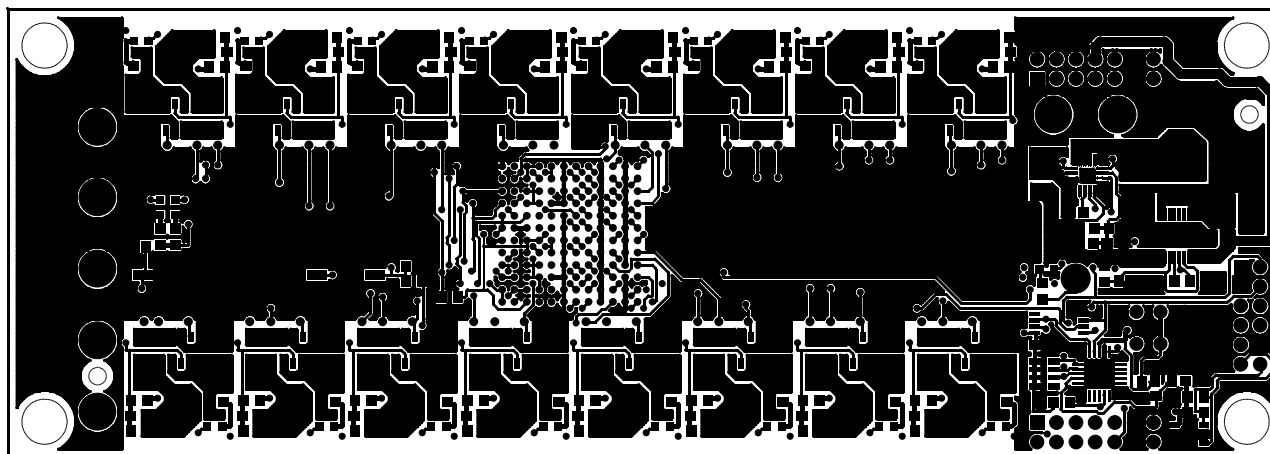
REVISION HISTORY				
ECO	REV	DESCRIPTION	APPROVED	DATE
-	1	PRODUCTION	MIKE P.	01/29/2013



UNLESS OTHERWISE SPECIFIED DIMENSIONS ARE IN INCHES TOLERANCES ON ANGLE $\pm 1^\circ$ $0.XXX^\circ = \pm 0.01^\circ$ $0.XXX^\circ = \pm 0.005^\circ$ INTERPRET DIM AND TOL PER ASME Y14.5M-1994	APPROVALS			 1630 MCCARTHY BLVD. MILPITAS, CA 95033 PH: (408) 432-1800 LTC CONFIDENTIAL FOR CUSTOMER USE ONLY
	PCB DES.	R.S.	01-29-13	
	ENG	MIKE P.	01-29-13	
	THIRD ANGLE PROJECTION			
				TITLE: TOP SOLDERMASK LTM2987CY 16-CHANNEL POWER SYSTEM MANAGER
DO NOT SCALE DRAWING	SCALE: NONE			SIZE N/A IC NO. LTM2987 DEMO CIRCUIT 2023A FILENAME: DC2023A_Rev1
				REV 1 SHEET 6 OF 13

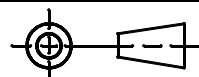
# REVISION HISTORY

ECO	REV	DESCRIPTION	APPROVED	DATE
-	1	PRODUCTION	MIKE P.	01/29/2013



UNLESS OTHERWISE SPECIFIED  
DIMENSIONS ARE IN INCHES  
TOLERANCES ON ANGLE  $\pm 1^\circ$   
0.XXX" =  $\pm 0.01$ "  
0.XXX" =  $\pm 0.005$ "  
INTERPRET DIM AND TOL  
PER ASME Y14.5M-1994

THIRD ANGLE PROJECTION



DO NOT SCALE DRAWING

## APPROVALS

	NAME	DATE
PCB DES.	R.S.	01-29-13
ENG	MIKE P.	01-29-13



1630 MCCARTHY BLVD.  
MILPITAS, CA 95033  
PH: (408) 432-1500  
LTC CONFIDENTIAL  
FOR CUSTOMER USE ONLY

TITLE: 1 - TOP COPPER (SIGNAL)  
LTM2987CY 16-CHANNEL  
POWER SYSTEM MANAGER

SIZE N/A	IC NO. LTM2987 DEMO CIRCUIT 2023A	REV 1
-------------	--------------------------------------	----------

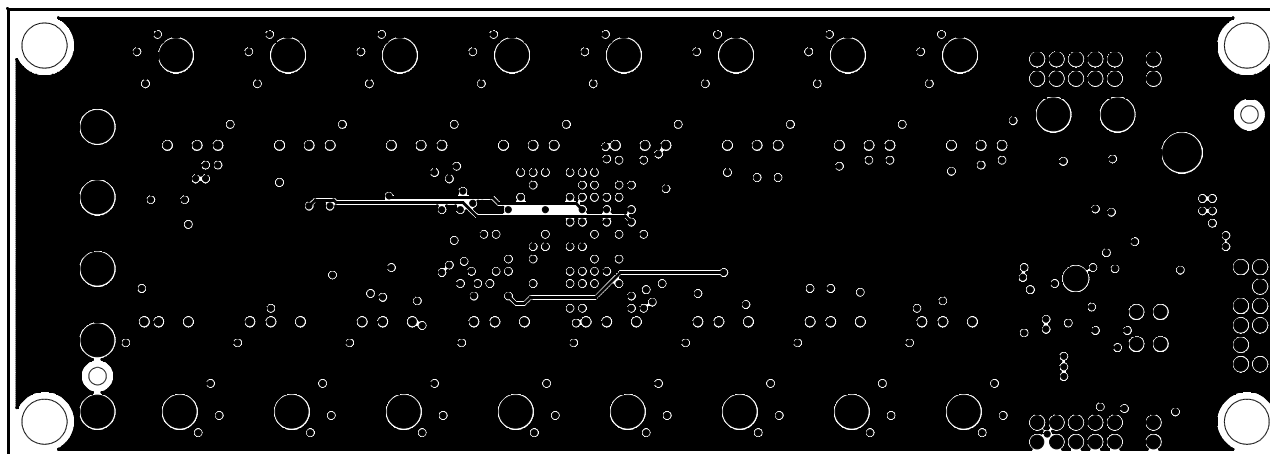
FILENAME: DC2023A\_Rev1

SHEET 7 OF 13

SCALE: NONE

# REVISION HISTORY

ECO	REV	DESCRIPTION	APPROVED	DATE
-	1	PRODUCTION	MIKE P.	01/29/2013

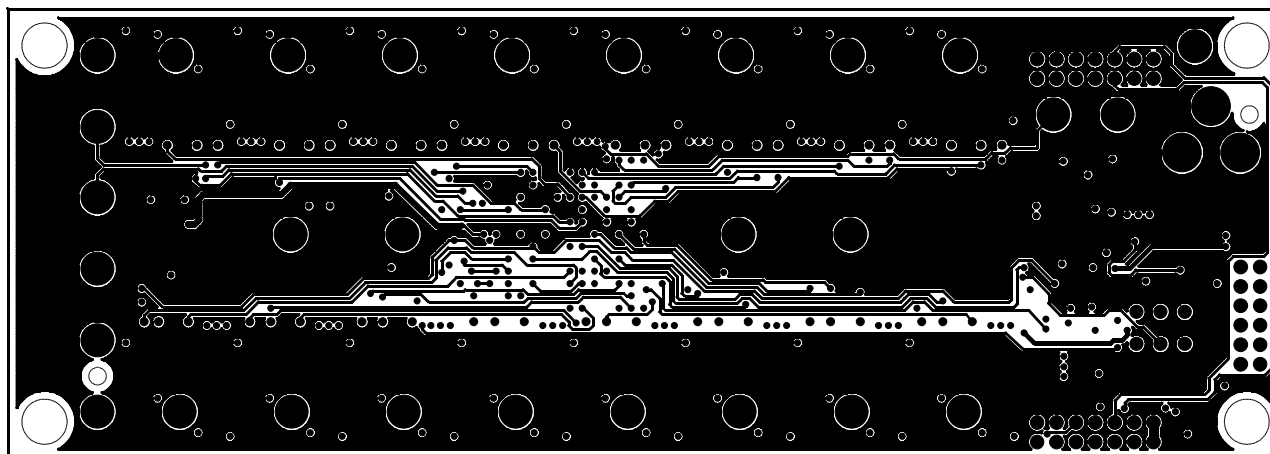


<p>UNLESS OTHERWISE SPECIFIED DIMENSIONS ARE IN INCHES TOLERANCES ON ANGLE +/- 1° 0.XX" = +/- 0.01" 0.XXX" = +/- 0.005" INTERPRET DIM AND TOL PER ASME Y14.5M-1994</p>	<p><b>APPROVALS</b></p> <table border="1"> <tr> <th></th> <th>NAME</th> <th>DATE</th> </tr> <tr> <td>PCB DES.</td> <td>R.S.</td> <td>01-29-13</td> </tr> <tr> <td>ENG</td> <td>MIKE P.</td> <td>01-29-13</td> </tr> </table>				NAME	DATE	PCB DES.	R.S.	01-29-13	ENG	MIKE P.	01-29-13	<p><b>LINEAR TECHNOLOGY</b></p> <p>1630 MCCARTHY BLVD. MILPITAS, CA 95033 PH: (408) 432-1500 LTC CONFIDENTIAL FOR CUSTOMER USE ONLY</p>	
		NAME	DATE											
	PCB DES.	R.S.	01-29-13											
	ENG	MIKE P.	01-29-13											
<p>THIRD ANGLE PROJECTION</p>			<p><b>TITLE: 2 - INNER COPPER (GND PLANE) LTM2987CY 16-CHANNEL POWER SYSTEM MANAGER</b></p>											
	<p>SIZE N/A</p>			<p>IC NO. LTM2987 DEMO CIRCUIT 2023A</p>										
	<p>DO NOT SCALE DRAWING</p>			<p>SCALE: NONE</p>										
<p>FILENAME: DC2023A_Rev1</p>			<p>SHEET 8 OF 13</p>											



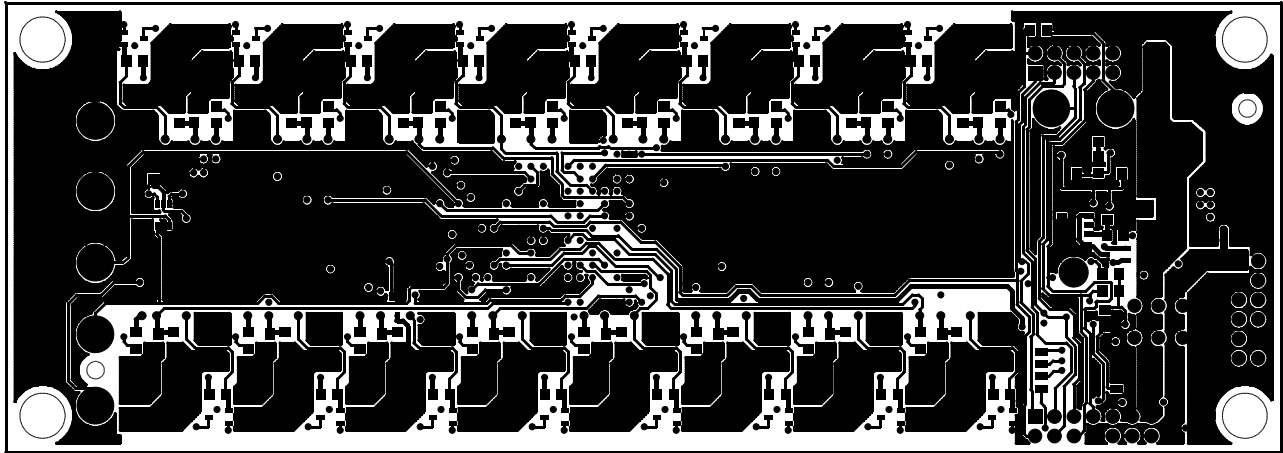
# REVISION HISTORY

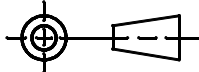

ECO	REV	DESCRIPTION	APPROVED	DATE
-	1	PRODUCTION	MIKE P.	01/29/2013



<p>UNLESS OTHERWISE SPECIFIED DIMENSIONS ARE IN INCHES TOLERANCES ON ANGLE +/- 1° 0.XX" = +/- 0.01" 0.XXX" = +/- 0.005" INTERPRET DIM AND TOL PER ASME Y14.5M-1994</p>	<p><b>APPROVALS</b></p> <table border="1"> <tr> <th></th> <th>NAME</th> <th>DATE</th> </tr> <tr> <td>PCB DES.</td> <td>R.S.</td> <td>01-29-13</td> </tr> <tr> <td>ENG</td> <td>MIKE P.</td> <td>01-29-13</td> </tr> </table>				NAME	DATE	PCB DES.	R.S.	01-29-13	ENG	MIKE P.	01-29-13	<p><b>LINEAR TECHNOLOGY</b></p> <p>1630 MCCARTHY BLVD. MILPITAS, CA 95033 PH: (408) 432-1500 LTC CONFIDENTIAL FOR CUSTOMER USE ONLY</p>	
		NAME	DATE											
	PCB DES.	R.S.	01-29-13											
	ENG	MIKE P.	01-29-13											
<p>THIRD ANGLE PROJECTION</p>			<p><b>TITLE: 3 - INNER COPPER (POWER)</b> <b>LTM2987CY 16-CHANNEL</b> <b>POWER SYSTEM MANAGER</b></p>											
	<p>SIZE N/A</p>			<p>IC NO. LTM2987 DEMO CIRCUIT 2023A</p>										
	<p>DO NOT SCALE DRAWING</p>			<p>SCALE: NONE</p>										
<p>FILENAME: DC2023A_Rev1</p>			<p>SHEET 9 OF 13</p>											

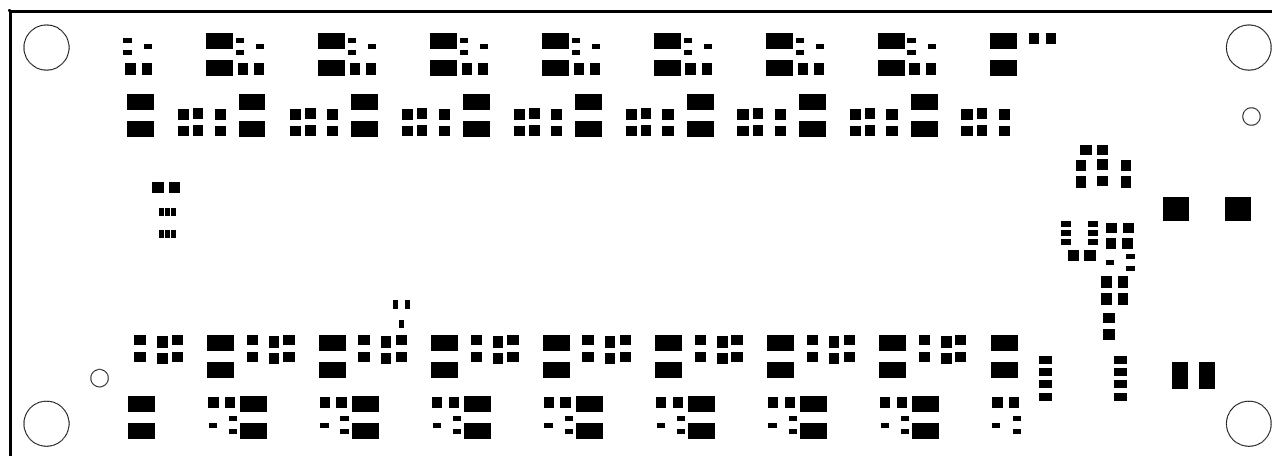
REVISION HISTORY				
ECO	REV	DESCRIPTION	APPROVED	DATE
-	1	PRODUCTION	MIKE P.	01/29/2013



UNLESS OTHERWISE SPECIFIED DIMENSIONS ARE IN INCHES TOLERANCES ON ANGLE +/- 1° 0.XXX" = +/- 0.01" 0.XXX" = +/- 0.005" INTERPRET DIM AND TOL PER ASME Y14.5M-1994  THIRD ANGLE PROJECTION  	APPROVALS			 <div>1630 MCCARTHY BLVD. MILPITAS, CA 95033 PH: (408) 432-1500 LTC CONFIDENTIAL FOR CUSTOMER USE ONLY</div>
		NAME	DATE	
	PCB DES.	R.S.	01-29-13	
	ENG	MIKE P.	01-29-13	
TITLE: 4 - BOTTOM COPPER (SIGNAL) LTM2987CY 16-CHANNEL POWER SYSTEM MANAGER				SIZE N/A
DO NOT SCALE DRAWING				
SCALE: NONE			IC NO. LTM2987 DEMO CIRCUIT 2023A	REV 1
FILENAME: DC2023A_Rev1			SHEET 10 OF 13	

# REVISION HISTORY

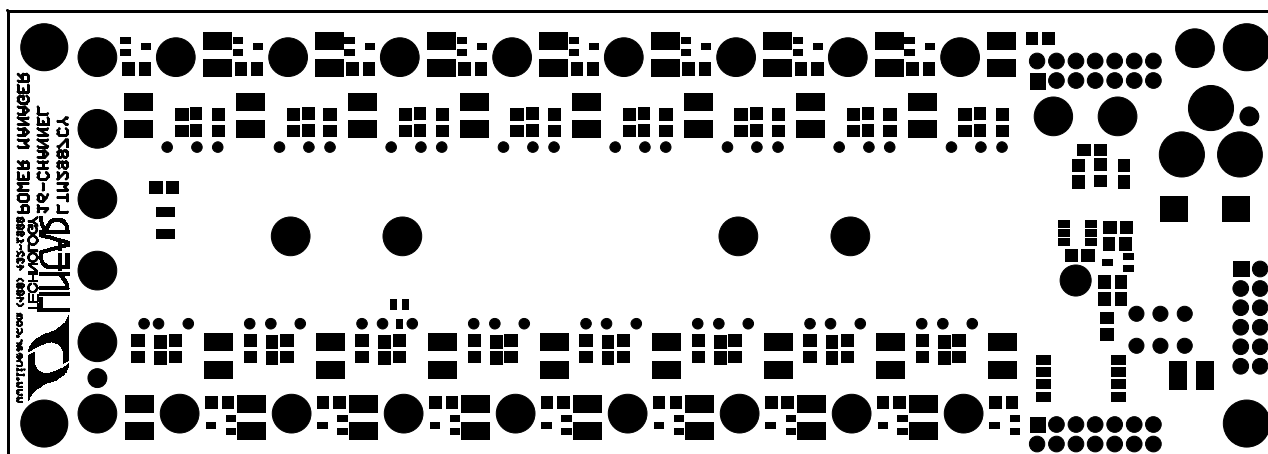
ECO	REV	DESCRIPTION	APPROVED	DATE
-	1	PRODUCTION	MIKE P.	01/29/2013



<p>UNLESS OTHERWISE SPECIFIED DIMENSIONS ARE IN INCHES TOLERANCES ON ANGLE +/- 1° 0.XXX" = +/- 0.01" 0.XXX" = +/- 0.005" INTERPRET DIM AND TOL PER ASME Y14.5M-1994</p>	<p><b>APPROVALS</b></p>			<p><b>LINEAR</b> TECHNOLOGY</p> <p>1630 MCCARTHY BLVD. MILPITAS, CA 95033 PH: (408) 432-1500 LTC CONFIDENTIAL FOR CUSTOMER USE ONLY</p>
	PCB DES.	R.S.	01-29-13	
	ENG	MIKE P.	01-29-13	
	<p>THIRD ANGLE PROJECTION</p>			
	<p>TITLE: BOTTOM PASTE LTM2987CY 16-CHANNEL POWER SYSTEM MANAGER</p>			
DO NOT SCALE DRAWING	SCALE: NONE	SIZE N/A	IC NO. LTM2987 DEMO CIRCUIT 2023A	REV 1
FILENAME: DC2023A_Rev1		SHEET 11 OF 13		

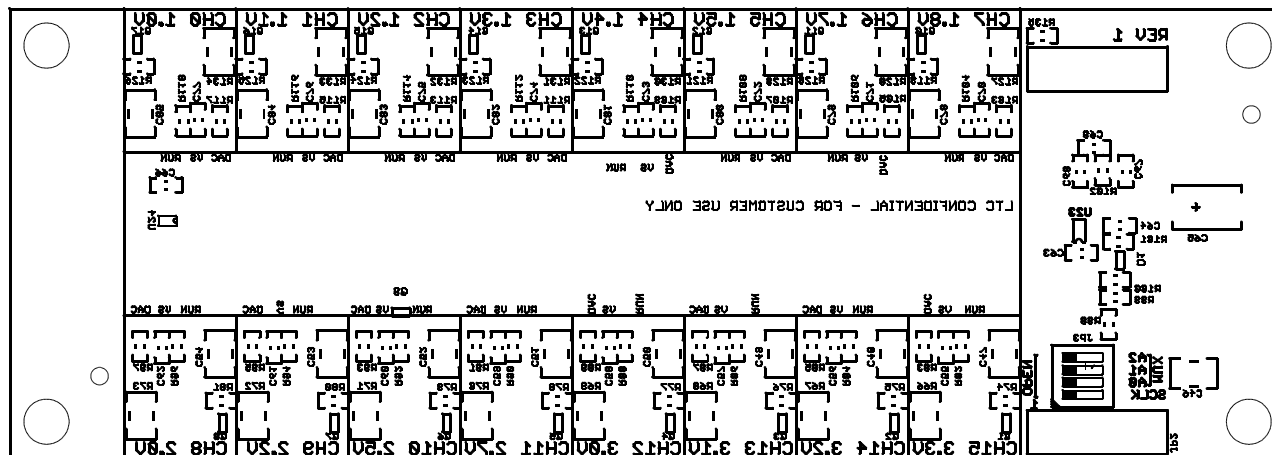
# REVISION HISTORY


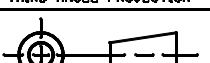
ECO	REV	DESCRIPTION	APPROVED	DATE
-	1	PRODUCTION	MIKE P.	01/29/2013



<p>UNLESS OTHERWISE SPECIFIED DIMENSIONS ARE IN INCHES TOLERANCES ON ANGLE +/- 1° 0.XXX" = +/- 0.01" 0.XXX" = +/- 0.005" INTERPRET DIM AND TOL PER ASME Y14.5M-1994</p> <p>THIRD ANGLE PROJECTION</p> <p>DO NOT SCALE DRAWING</p>	<p><b>APPROVALS</b></p> <table border="1"> <thead> <tr> <th></th> <th>NAME</th> <th>DATE</th> </tr> </thead> <tbody> <tr> <td>PCB DES.</td> <td>R.S.</td> <td>01-29-13</td> </tr> <tr> <td>ENG</td> <td>MIKE P.</td> <td>01-29-13</td> </tr> </tbody> </table>			NAME	DATE	PCB DES.	R.S.	01-29-13	ENG	MIKE P.	01-29-13	<p>1630 MCCARTHY BLVD. MILPITAS, CA 95033 PH: (408) 432-1000 LTC CONFIDENTIAL FOR CUSTOMER USE ONLY</p>	
		NAME	DATE										
PCB DES.	R.S.	01-29-13											
ENG	MIKE P.	01-29-13											
<p>TITLE: BOTTOM SOLDERMASK LTM2987CY 16-CHANNEL POWER SYSTEM MANAGER</p>		<p>SIZE N/A</p>	<p>IC NO. LTM2987 DEMO CIRCUIT 2023A</p>	<p>REV 1</p>									

REVISION HISTORY				
ECO	REV	DESCRIPTION	APPROVED	DATE
-	1	PRODUCTION	MIKE P.	01/29/2013



UNLESS OTHERWISE SPECIFIED DIMENSIONS ARE IN INCHES TOLERANCES ON ANGLE +/- 1° 0.XXX° = +/- 0.01° 0.XXX° = +/- 0.005° INTERPRET DIM AND TOL PER ASME Y14.5M-1994	APPROVALS			 <div>1630 MCCARTHY BLVD. MILPITAS, CA 95033 PH: (408) 432-1500 LTC CONFIDENTIAL FOR CUSTOMER USE ONLY</div>		
		NAME	DATE			
	PCB DES.	R.S.	01-29-13			
	ENG	MIKE P.	01-29-13			
THIRD ANGLE PROJECTION					TITLE: BOTTOM SILKSCREEN LTM2987CY 16-CHANNEL POWER SYSTEM MANAGER	
						
DO NOT SCALE DRAWING	SCALE: NONE			SIZE N/A	IC NO. LTM2987 DEMO CIRCUIT 2023A	REV 1
				FILENAME: DC2023A_Rev1		SHEET 13 OF 13