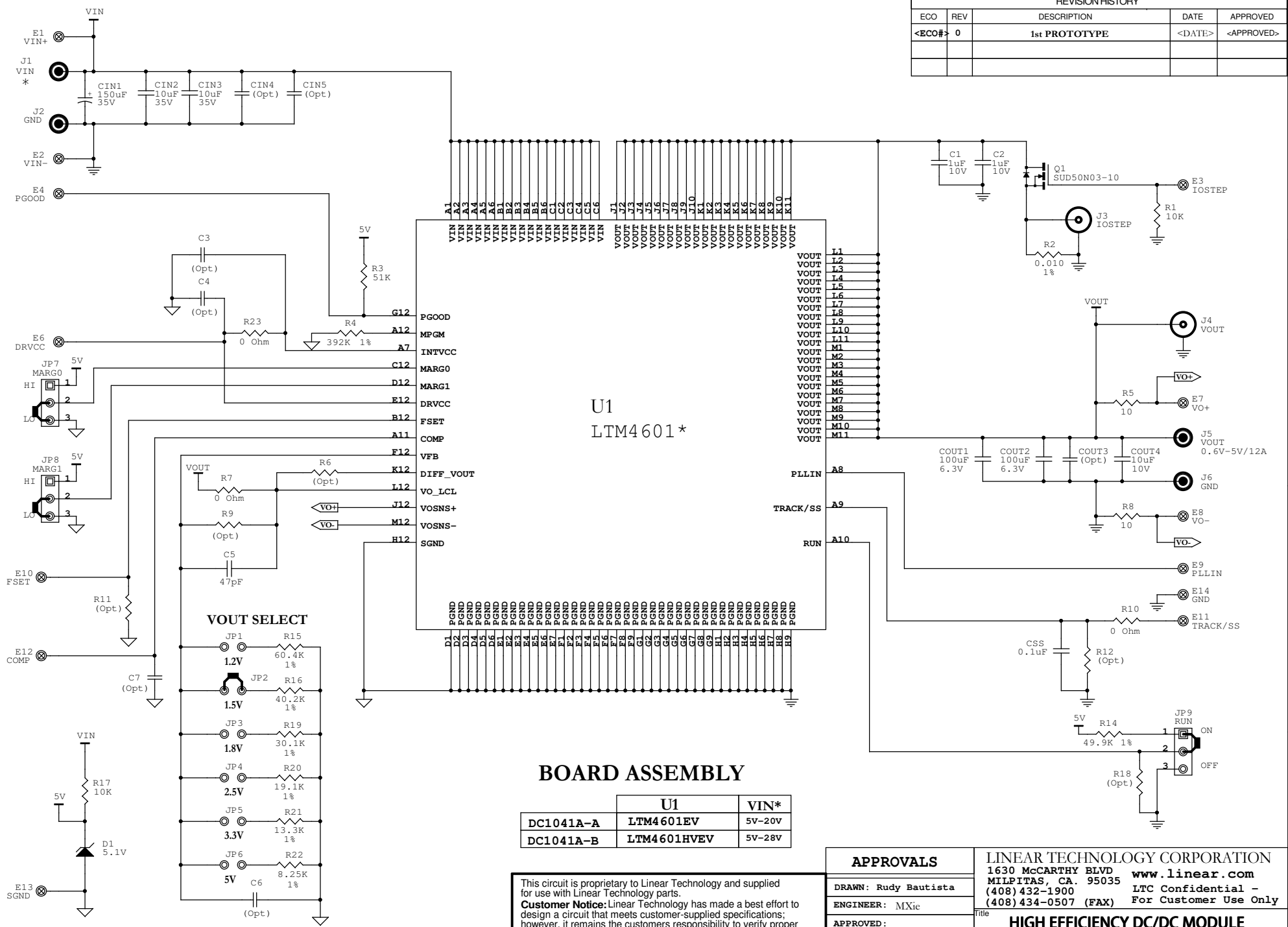


REVISION HISTORY				
ECO	REV	DESCRIPTION	DATE	APPROVED
<ECO#>	0	1st PROTOTYPE	<DATE>	<APPROVED>



BOARD ASSEMBLY

	U1	VIN*
DC1041A-A	LTM4601EV	5V-20V
DC1041A-B	LTM4601HVEV	5V-28V

This circuit is proprietary to Linear Technology and supplied for use with Linear Technology parts.
Customer Notice: Linear Technology has made a best effort to design a circuit that meets customer-supplied specifications; however, it remains the customers responsibility to verify proper and reliable operation in the actual application, Component substitution and printed circuit board layout may significantly affect circuit performance or reliability. Contact Linear Applications Engineering for assistance.

APPROVALS		LINEAR TECHNOLOGY CORPORATION	
DRAWN: Rudy Bautista		1630 McCARTHY BLVD MILPITAS, CA. 95035 (408) 432-1900 (408) 434-0507 (FAX)	
ENGINEER: MXie		www.linear.com LTC Confidential - For Customer Use Only	
APPROVED:		Title HIGH EFFICIENCY DC/DC MODULE	
CHECKED:		Size Document Number Demo Circuit 1041A	
DCkxxA_00.PCB	xxxA_x.DSN	Date: Wednesday, June 28, 2006	Sheet 1 of 1
			Rev 2