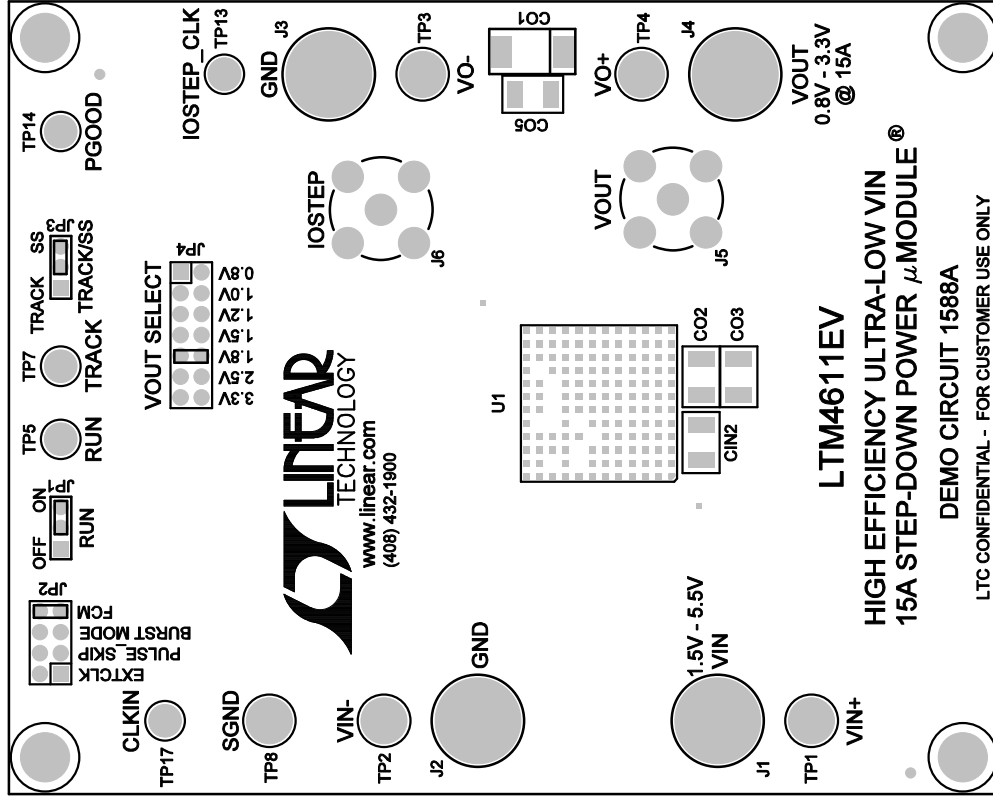
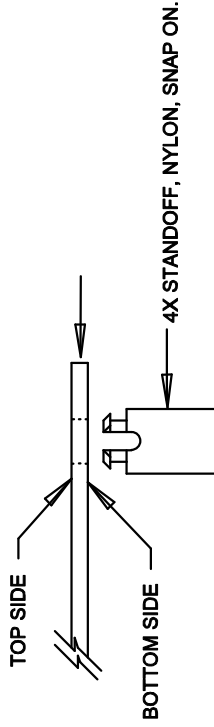


REVISION HISTORY			
ECO	REV	DESCRIPTION	DATE
	1	SECOND PROTOTYPE	JEFF Z.
			03/30/10

NOTES: UNLESS OTHERWISE SPECIFIED,

1. WORKMANSHIP SHALL BE IN ACCORDANCE WITH IPC-A-610.
2. ASSEMBLY PROCESS SHALL INCLUDE: REFLOW SOLDER TOP SIDE SMD.
3. PARTS TO OMIT WILL BE SPECIFIED ON THE BILLS OF MATERIAL. LOCATIONS OF OMITTED PARTS SHALL BE FREE OF SOLDER. MASK THE SOLDER STENCIL WHERE SMT PARTS ARE OMITTED.
4. INSTALL SHUNTS AS SHOWN ON ASSY DRAWING.
5. DEPANELIZE BOARDS AFTER ASSEMBLY AND ROUTE-OUT THE BREAKOUT TABS ON FOUR SIDES OF THE BOARD EDGE.
6. DO NOT APPLY ANY KIND OF ASSEMBLY STAMP OR QA STAMP TO ANY BOARD.
7. INSTALL 4 STANDOFFS AT 4 LOCATIONS AS SHOWN BELOW:



TOP SILKSCREEN

APPROVALS		LTC CONFIDENTIAL - FOR CUSTOMER USE ONLY	
PCB DES.	MI	<div> <div> </div> <div> 1630 MCCARTHY BLVD MILPITAS, CA 95035 PH: (408)432-1900 www.linear.com LTC CONFIDENTIAL - FOR CUSTOMER USE ONLY </div> </div>	
APP. ENG.	JEFF Z.	<div> <div> TITLE: TOP ASSEMBLY DRAWING, HIGH EFFICIENCY ULTRA-LOW VIN 15A STEP-DOWN POWER μMODULE $\text{\textcircled{R}}$ </div> </div>	
		<div> <div> SIZE N/A </div> <div> IC NO LTM4611EV </div> </div>	<div> REV 2 </div>
SCALE: NONE		<div> FILENAME: 1588A-2.PCB </div>	
		SHT 1 of 2	