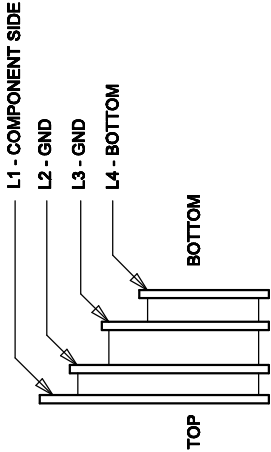


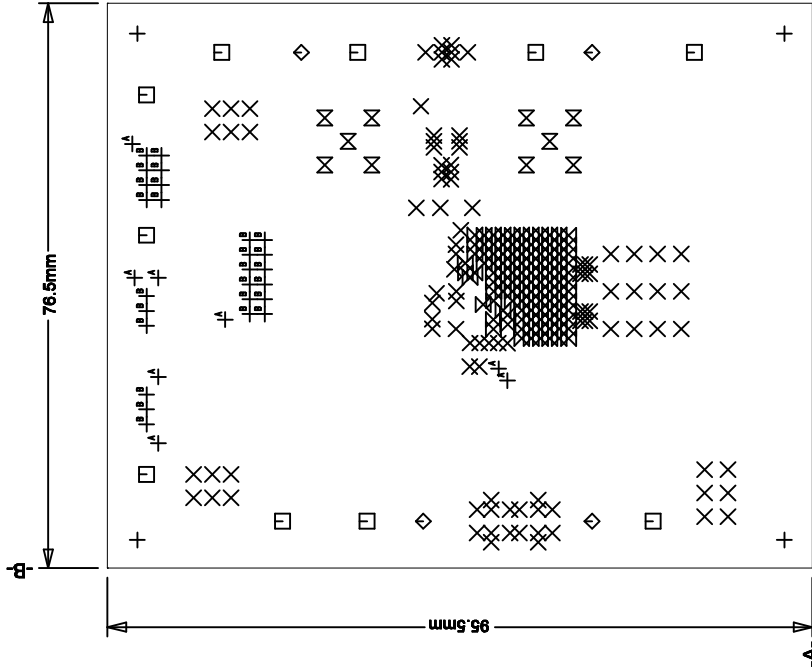
| REVISION HISTORY |     |                     |          |
|------------------|-----|---------------------|----------|
| ECO              | REV | DESCRIPTION         | APPROVAL |
| 1                | 1   | REBUILD WITH CHANGE | SAM Y.   |
|                  |     |                     | DATE     |
|                  |     |                     | 08/11/10 |

NOTES: UNLESS OTHERWISE SPECIFIED,

1. FAB PER IPC-A-600.
2. MATERIAL: -EPOXY FIBERGLASS, NEMA GRADE FR-4  
-FINISHED THICKNESS TO BE 1.6mm +/- 0.127mm  
-TOTAL OF 4 LAYERS WITH 2 OZ. CU ON THE OUTER LAYERS  
AND 1 OZ. CU ON THE INNER LAYERS.  
-FLAMMABILITY RATING: 94 V-0 MINIMUM.
3. SIZE: CUT TO DIMENSIONS AND TOLERANCES SHOWN.  
0.00 ARE PRIMARY DATUMS.
4. DRILLING: -DRILL HOLES PER SCHEDULE. PLATE THROUGH  
HOLES WITH COPPER, 0.0254mm THICK MIN.  
-ALL HOLE SIZES ARE SPECIFIED AFTER PLATING.  
-HOLE LOCATION TOLERANCES ARE +/-0.08mm  
IN RELATION TO CENTER
5. FINISH: -SMOBC USING LPI BOTH SIDES, COLOR GREEN.  
-GOLD IMMERSION BOTH SIDES.  
(LEAD FREE SOLDER CAN BE USED FOR PROTOTYPE)  
-SILKSCREEN BOTH SIDES WITH WHITE NON-CONDUCTIVE INK.
6. DO NOT ALTER ARTWORK e.g. TO ADD LOGO OR DATE CODE.  
PAD SIZE CAN BE MODIFIED TO MEET END FINISH.
7. PCBs ARE TO BE RoHS COMPLIANT.



LAYER STRUCTURE



COMPONENT SIDE SHOWN

| SIZE   | QTY | SYM | PLATED | TOL     |
|--------|-----|-----|--------|---------|
| 0.15   | 112 |     | YES    | +/-0.08 |
| 0.2032 | 100 |     | YES    | +/-0.08 |
| 0.508  | 8   |     | YES    | +/-0.08 |
| 0.9    | 26  |     | YES    | +/-0.08 |
| 1.4    | 10  |     | YES    | +/-0.08 |
| 2.41   | 10  |     | YES    | +/-0.13 |
| 4.75   | 4   |     | NO     | +/-0.13 |
| 5.47   | 4   |     | YES    | +/-0.13 |

| APPROVALS |        | UNLESS OTHERWISE SPECIFIED<br>DIMENSIONS ARE IN MILLIMETERS<br>TOLERANCES ON ANGLE ±1° |            |
|-----------|--------|--|------------|
| PCB DES.  | MI     | JXX ± 0.254  |            |
| APP. ENG. | SAM Y. | JXX ± 0.127  |            |
|           |        | INTERPRET DIM AND TOL<br>PER ASME Y14.5M-1994  |            |
|           |        | THIRD ANGLE PROJECTION   |            |
|           |        |  |            |
|           |        | DO NOT SCALE DRAWING   |            |
|           |        | SCALE: NONE  |            |
|           |        | TITLE: FABRICATION DRAWING   |            |
|           |        | HIGH EFFICIENCY 15A STEP-DOWN  |            |
|           |        | POWER μMODULE®   |            |
|           |        | IC No. LTM4627EV   | REV 1      |
|           |        | SIZE N/A   | 1          |
|           |        | FILENAME: 1669B-1.PCB  | SHT 1 of 1 |