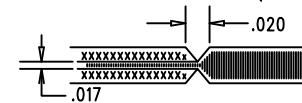


NOTES: UNLESS OTHERWISE SPECIFIED

- FAB PER IPC-A-600.
- MATERIAL
 - 2.1 MATERIAL SHALL BE LEAD-FREE ASSEMBLY COMPLIANT FR-370HR. OR EQUIVALENT.
 - 2.2 FLAMMABILITY RATING: 94 V-0 MINIMUM.
 - 2.3 TOTAL OF 6 LAYERS. FINISHED BOARD THICKNESS SHALL BE 62 MILS +/- 10%.
 - 2.4 COPPER PLATING AND DIELECTRIC THICKNESSES AS PER FIG.1, "STACKUP DETAILS".
- SIZE: CUT TO DIMENSIONS AND TOLERANCES SHOWN.
- DRILLING DETAILS
 - 4.1 DRILL HOLES PER SCHEDULE. PLATE THROUGH HOLES MIN. COPPER THICKNESS 1 MIL.
 - 4.2 ALL HOLE SIZES ARE SPECIFIED AFTER PLATING.
 - 4.3 ALL 11 MIL DIA. VIAS SHALL BE FILLED & CAPPED IPC 4761 TYPE VII.
- FINISH PLATING AND SILKSCREEN
 - 5.1 PLATING SHALL BE ENIG FINISH WITH GREEN SOLDERMASK. REFER TO NOTE 10, "SOLDERMASK DETAILS".
 - 5.2 SILKSCREEN LEGENDS SHALL BE WHITE NON-CONDUCTIVE EPOXY INK.
 - 5.3 MINIMUM FINISHED PAD SIZE FOR U1 COPPER-DEFINED PADS SHALL BE 15 MILS.
- DO NOT ALTER ARTWORK e.g. TO ADD LOGO OR DATE CODE. PAD SIZE CAN BE MODIFIED TO MEET END FINISH.
- BOARDS SHALL BE RoHS COMPLIANT.
- SCORING FOR PANELIZED PCB (PRODUCTION FAB ONLY):



- ANY ELECTRICAL TEST/QA STAMPS SHALL BE ON BOTTOM SIDE.
- SOLDERMASK DETAILS
 - 10.1 SOLDERMASK IS SUPPLIED TO FABRICATOR AS ZERO-CLEARANCE DATA.
 - 10.2 SOLDERMASK REGISTRATION TOLERANCE FOR U1 PADS SHALL BE 2 MILS.
 - 10.3 SOLDERMASK APERTURE FOR U1 SOLDERMASK-DEFINED PADS SHALL BE 15.75 MILS.

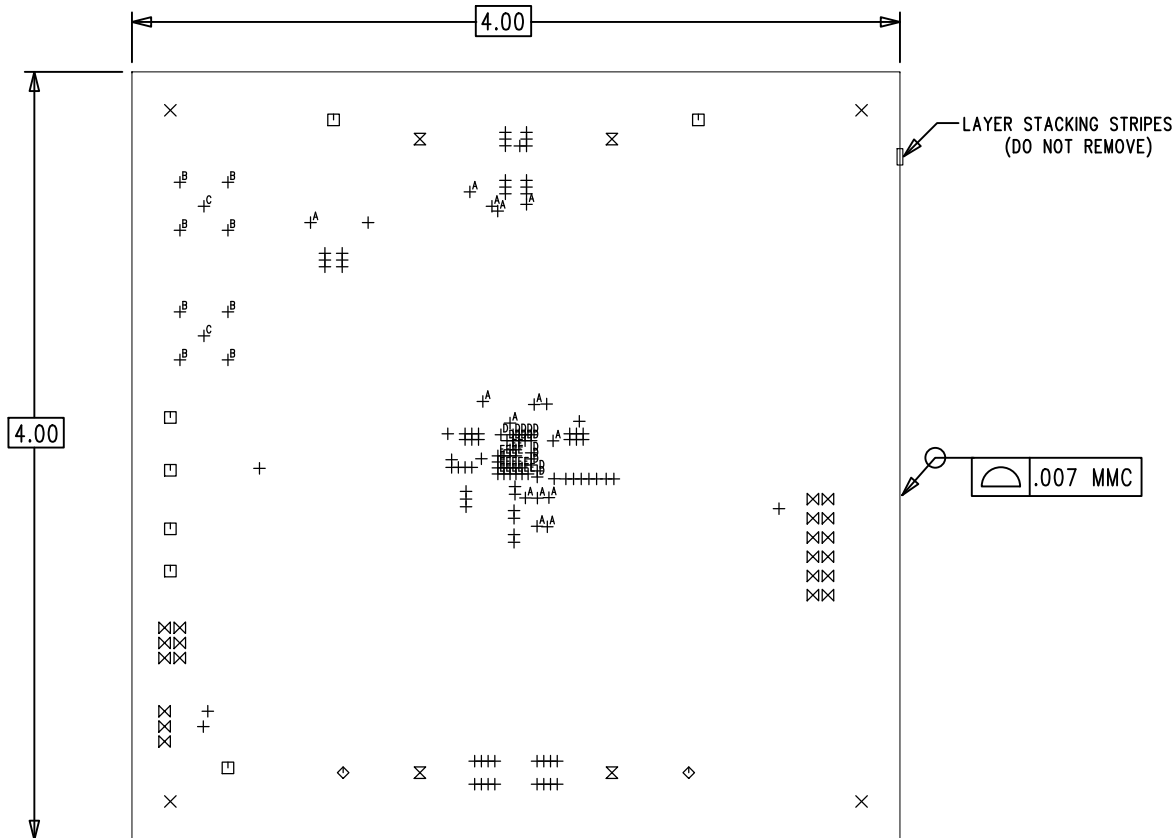
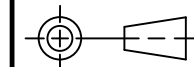
FIGURE 1- STACKUP DETAILS

2.0 OZ.	FR370-HR	LAYER 1- TOP SIDE
6.0 MILS	FR370-HR	
1.0 OZ.	FR370-HR	LAYER 2
10 MILS	FR370-HR	
1 OZ.	FR370-HR	LAYER 3
AS REQ'D	FR370-HR	
1 OZ.	FR370-HR	LAYER 4
10 MILS	FR370-HR	
1.0 OZ.	FR370-HR	LAYER 5
6.0 MILS	FR370-HR	
2.0 OZ.	FR370-HR	LAYER 6- BOTTOM SIDE

.062" +/- 10%
6 LAYERS

THICKNESS

UNLESS OTHERWISE SPECIFIED		APPROVALS		ANALOG DEVICES POWER BY LINEAR	
DIMENSIONS ARE IN INCHES		ENG.	M. HAWKINS	FOR ADI CUSTOMER USE ONLY	
TOLERANCES:		APP ENG.	TIM KOZONO	TITLE: FABRICATION DRAWING	
0.XX" = ±0.01"				DEMO CIRCUIT DC2665A	
0.XXX" = ±0.005"				20V STEP-DOWN uMODULE REGULATOR	
INTERPRET DIM AND TOL PER ASME Y14.5M-1994				SIZE	IC NO.
THIRD ANGLE PROJECTION				N/A	LTM4626, LTM4638
		SCALE = NONE		DRILL DWG. REV. 03	
		FILENAME: 630-DC2665A_REV03_DESIGN_LAYOUT.PCB			SHT 1 OF 1



20V STEP-DOWN uMODULE REGULATOR DEMO CIRCUIT DC2665A
PCB# 600-DC2665A REV03

DRILL CHART

SIZE	QTY	SYM	PLATED	TOL
12	78	+	YES	+/- 3 MILS
188	4	X	NO	+/- 3 MILS
65	7	□	YES	+/- 3 MILS
95	2	◇	YES	+/- 3 MILS
207	4	⊗	YES	+/-0.003
35	21	⊗	YES	+/- 3 MILS
9	14	+A	YES	+/- 3 MILS
60	8	+B	YES	+/- 3 MILS
51	2	+C	YES	+/- 3 MILS
6	15	+D	YES	+/- 3 MILS
11	18	+E	YES	+/- 3 MILS