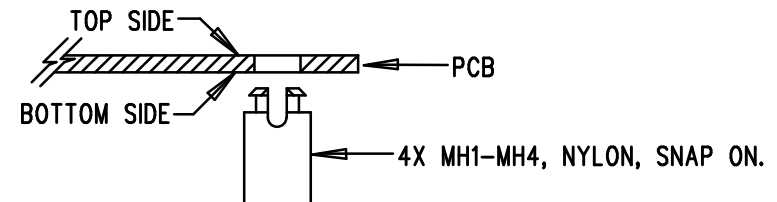


REVISION HISTORY

ECO	REV	DESCRIPTION	APP. ENG.	DATE
-	2	PRODUCTION	SAM Y.	04-04-12

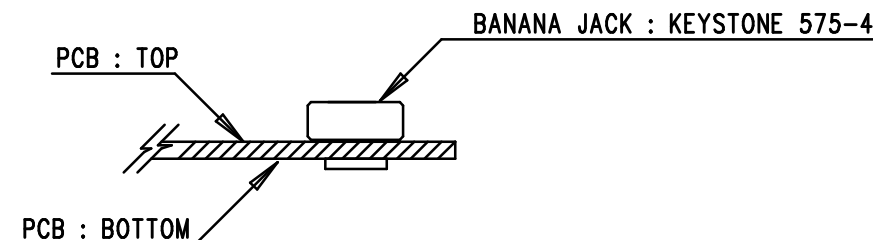
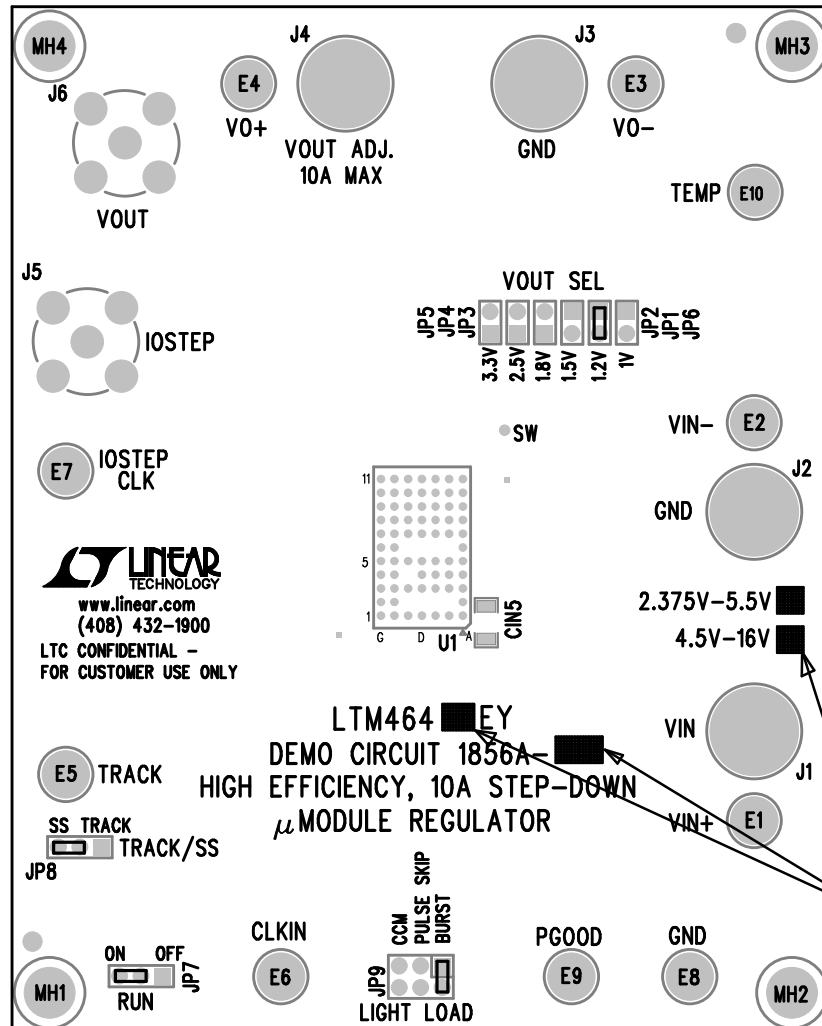
NOTES: UNLESS OTHERWISE SPECIFIED

1. WORKMANSHIP SHALL BE IN ACCORDANCE WITH IPC-A-610.
2. ASSEMBLY PROCESS SHALL INCLUDE: REFLOW SOLDER TOP SIDE SMD. MAXIMUM SOLDER TEMPERATURE IS 240 DEGREES CELSIUS.
3. PARTS TO OMIT WILL BE SPECIFIED ON THE BILL OF MATERIALS. LOCATIONS OF OMITTED PARTS SHALL BE FREE OF SOLDER. MASK THE SOLDER STENCIL WHERE SMT PARTS ARE OMITTED.
4. INSTALL SHUNTS AS SHOWN ON ASSY DRAWING.
5. DEPANELIZE BOARDS AFTER ASSEMBLY AND ROUTE-OUT THE BREAKOUT TABS ON FOUR SIDES OF THE BOARD EDGE.
6. DO NOT APPLY ANY KIND OF ASSEMBLY STAMP OR QA STAMP TO ANY BOARD.
7. INSTALL 4 STANDOFFS AT SHOWN BELOW:




8. MARK EACH LTC PART NUMBER AND ASSEMBLY TYPE WITH BLACK PERMANENT MARKER AS SHOWN IN TABLE BELOW:

ASSY	U1	VIN
-A	LTM4648EY	2.375V-5.5V
-B	LTM4649EY	4.5V-16V



APPROVALS

PCB DES.	LT	 <p>1630 MCCARTHY BLVD MILPITAS, CA 95035 PH: (408)432-1900 www.linear.com LTC CONFIDENTIAL - FOR CUSTOMER USE ONLY</p>		
APP ENG.	SAM Y.			
		TITLE: TOP ASSEMBLY DRAWING		
		HIGH EFFICIENCY, 10A STEP-DOWN μMODULE REGULATOR		
		SIZE	IC NO. LTM4648EY/LTM4649EY	REV.
		N/A	DEMO CIRCUIT 1856A	2
SCALE = NONE		FILENAME: DC1856A-2.PCB		SHT 1 OF 2