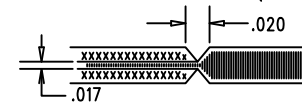


## NOTES: UNLESS OTHERWISE SPECIFIED

1. FAB PER IPC-A-600.
2. MATERIAL
  - 2.1 MATERIAL SHALL BE LEAD-FREE ASSEMBLY COMPLIANT FR-370HR. OR EQUIVALENT.
  - 2.2 FLAMMABILITY RATING: 94 V-0 MINIMUM.
  - 2.3 TOTAL OF 6 LAYERS. FINISHED BOARD THICKNESS SHALL BE 62 MILS +/- 10%.
  - 2.4 COPPER PLATING AND DIELECTRIC THICKNESSES AS PER FIG.1, "STACKUP DETAILS".
3. SIZE: CUT TO DIMENSIONS AND TOLERANCES SHOWN.
4. DRILLING DETAILS
  - 4.1 DRILL HOLES PER SCHEDULE. PLATE THROUGH HOLES MIN. COPPER THICKNESS 1 MIL.
  - 4.2 ALL HOLE SIZES ARE SPECIFIED AFTER PLATING.
  - 4.3 ALL 11 MIL DIA. VIAS SHALL BE FILLED & CAPPED IPC 4761 TYPE VII.
5. FINISH PLATING AND SILKSCREEN
  - 5.1 PLATING SHALL BE ENIG FINISH WITH GREEN SOLDERMASK. REFER TO NOTE 10, "SOLDERMASK DETAILS".
  - 5.2 SILKSCREEN LEGENDS SHALL BE WHITE NON-CONDUCTIVE EPOXY INK.
  - 5.3 MINIMUM FINISHED PAD SIZE FOR U1 COPPER-DEFINED PADS SHALL BE 15 MILS.
6. DO NOT ALTER ARTWORK e.g. TO ADD LOGO OR DATE CODE. PAD SIZE CAN BE MODIFIED TO MEET END FINISH.
7. BOARDS SHALL BE RoHS COMPLIANT.
8. SCORING FOR PANELIZED PCB (PRODUCTION FAB ONLY):

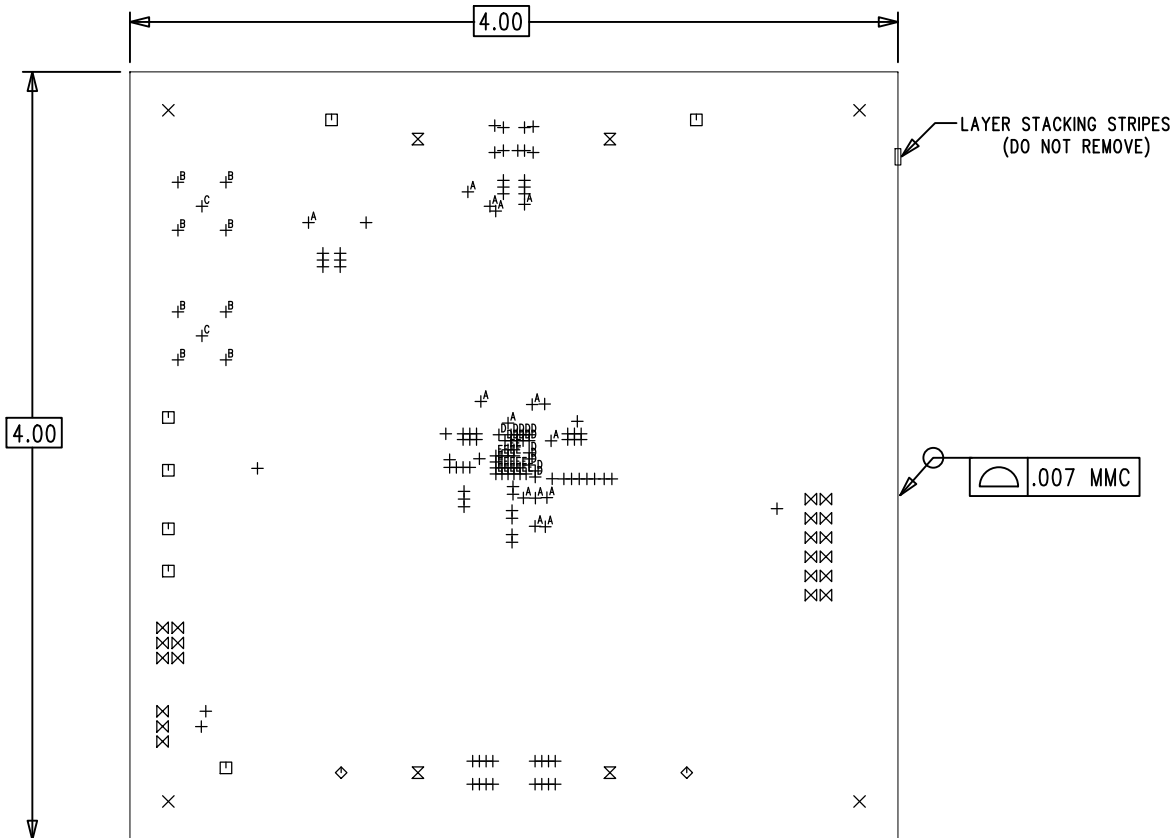


9. ANY ELECTRICAL TEST/QA STAMPS SHALL BE ON BOTTOM SIDE.
10. SOLDERMASK DETAILS
  - 10.1 SOLDERMASK IS SUPPLIED TO FABRICATOR AS ZERO-CLEARANCE DATA.
  - 10.2 SOLDERMASK REGISTRATION TOLERANCE FOR U1 PADS SHALL BE 2 MILS.
  - 10.3 SOLDERMASK APERTURE FOR U1 SOLDERMASK-DEFINED PADS SHALL BE 15.75 MILS.

FIGURE 1- STACKUP DETAILS

.062" +/- 10% 6 LAYERS	2.0 OZ.	FR370-HR	LAYER 1- TOP SIDE
	6.0 MILS	FR370-HR	
	1.0 OZ.	FR370-HR	LAYER 2
	10 MILS	FR370-HR	
	1 OZ.	FR370-HR	LAYER 3
	THICKNESS AS REQ'D	FR370-HR	
	1 OZ.	FR370-HR	LAYER 4
	10 MILS	FR370-HR	
	1.0 OZ.	FR370-HR	LAYER 5
	6.0 MILS	FR370-HR	
	2.0 OZ.	FR370-HR	LAYER 6- BOTTOM SIDE

UNLESS OTHERWISE SPECIFIED		APPROVALS		ANALOG DEVICES   POWER BY LINEAR	
DIMENSIONS ARE IN INCHES		ENG.	M. HAWKINS	FOR ADI CUSTOMER USE ONLY	
TOLERANCES:		APP ENG.	TIM KOZONO	TITLE: FABRICATION DRAWING	
0.XX" = ±0.01"				DEMO CIRCUIT DC2989A	
0.XXX" = ±0.005"				20V STEP-DOWN uMODULE REGULATOR	
INTERPRET DIM AND TOL PER ASME Y14.5M-1994				SIZE	IC NO.
THIRD ANGLE PROJECTION				N/A	LTM4657
		SCALE = NONE		DRILL DWG. REV.	
		FILENAME:		01	
				SHT 1 OF 1	



PCB# 600-DC2989A REV01

DRILL CHART

SIZE	QTY	SYM	PLATED	TOL
12	80	+	YES	+/- 3 MILS
188	4	X	NO	+/- 3 MILS
65	7	□	YES	+/- 3 MILS
95	2	◇	YES	+/- 3 MILS
207	4	⊗	YES	+/- 3 MILS
35	21	⊗	YES	+/- 3 MILS
9	14	+ <sup>A</sup>	YES	+/- 3 MILS
60	8	+ <sup>B</sup>	YES	+/- 3 MILS
51	2	+ <sup>C</sup>	YES	+/- 3 MILS
6	15	+ <sup>D</sup>	YES	+/- 3 MILS
11	18	+ <sup>E</sup>	YES	+/- 3 MILS