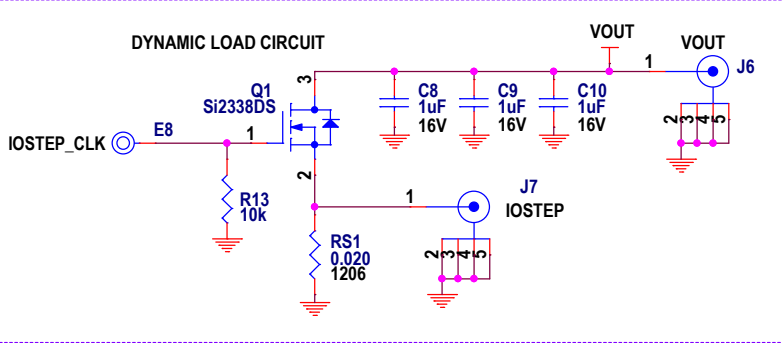
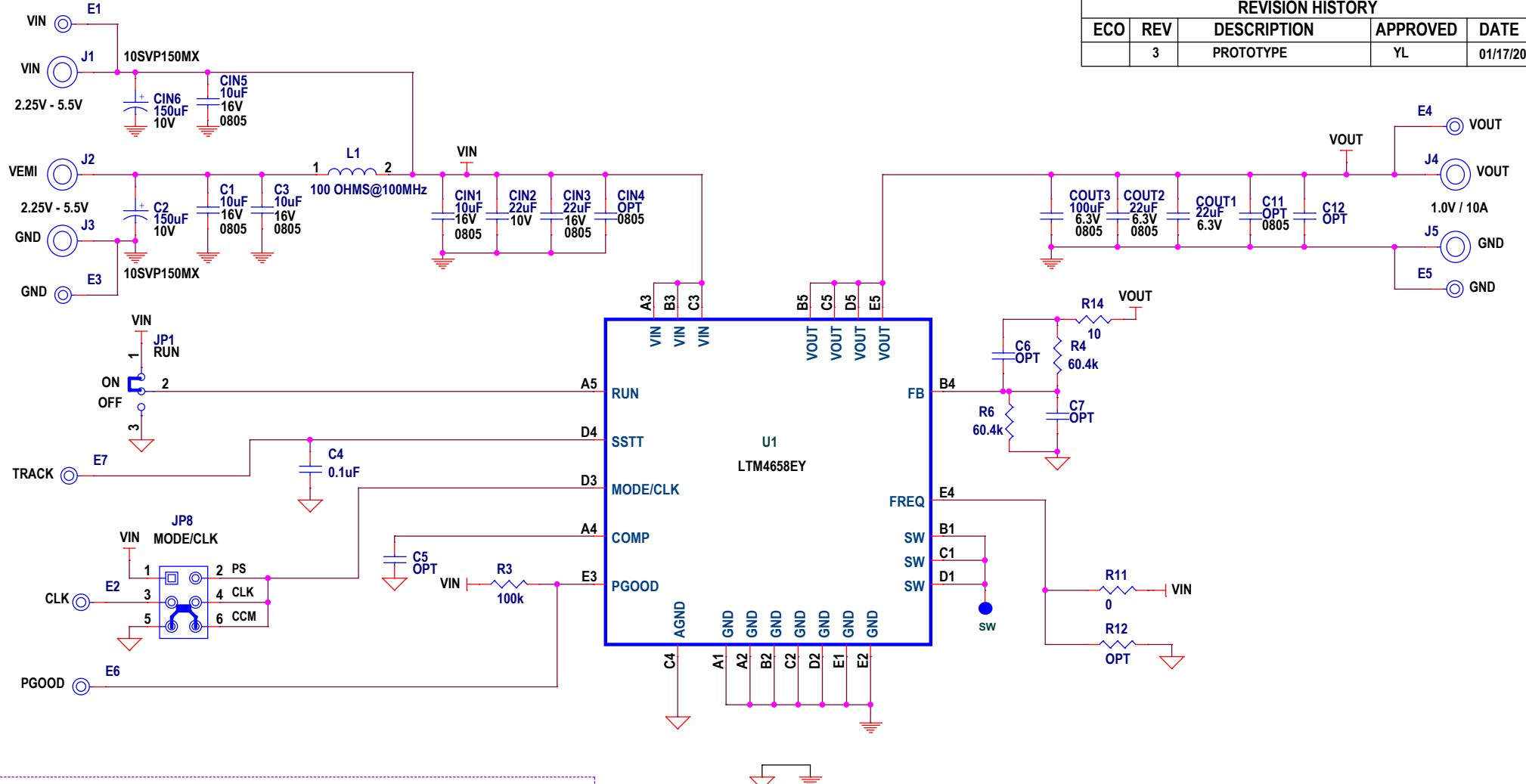


PCA ADDITIONAL PARTS

MP1	STANDOFF,NYLON,SNAP-ON,0.50"
MP2	STANDOFF,NYLON,SNAP-ON,0.50"
MP3	STANDOFF,NYLON,SNAP-ON,0.50"
MP4	STANDOFF,NYLON,SNAP-ON,0.50"
LB1	BOARD S/N LABEL
PCB1	PCB, DC2861A REV03
STNCL1	TOOL, STENCIL, 700-DC2861A REV03


REVISION HISTORY				
ECO	REV	DESCRIPTION	APPROVED	DATE
	3	PROTOTYPE	YL	01/17/20



NOTES: UNLESS OTHERWISE SPECIFIED

1. ALL RESISTORS AND CAPACITORS ARE 0603.

<Variant Name>

CUSTOMER NOTICE		APPROVALS		 ANALOG DEVICES AHEAD OF WHAT'S POSSIBLE™	2555 AUGUSTINE DRIVE SANTA CLARA, CA 95054 www.analog.com	
ANALOG DEVICES HAS MADE A BEST EFFORT TO DESIGN A CIRCUIT THAT MEETS CUSTOMER-SUPPLIED SPECIFICATIONS; HOWEVER, IT REMAINS THE CUSTOMER'S RESPONSIBILITY TO VERIFY PROPER AND RELIABLE OPERATION IN THE ACTUAL APPLICATION. COMPONENT SUBSTITUTION AND PRINTED CIRCUIT BOARD LAYOUT MAY SIGNIFICANTLY AFFECT CIRCUIT PERFORMANCE OR RELIABILITY. CONTACT ANALOG DEVICES APPLICATIONS ENGINEERING FOR ASSISTANCE.		PCB DES.	LT		TITLE: SCHEMATIC LOW VIN, HIGH EFFICIENCY 10A STEP-DOWN DC/DC μMODULE REGULATOR	
THIS CIRCUIT IS PROPRIETARY TO ANALOG DEVICES AND SUPPLIED FOR USE WITH ANALOG DEVICES PARTS.		APP ENG.	YAN L.	IC NO. LTM4658EY SKU NO. DC2861A		
		SIZE: N/A	DATE: Friday, October 01, 2021	SHEET 1 OF 1		