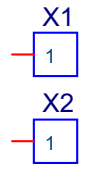


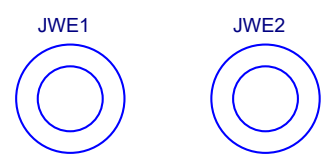
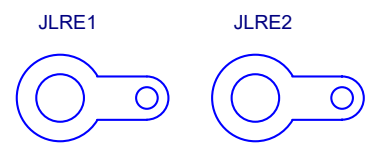
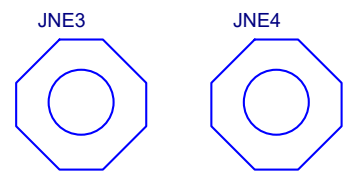
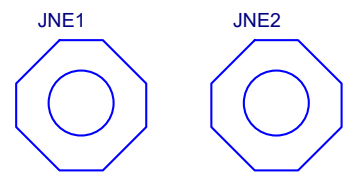
STANDOFFS

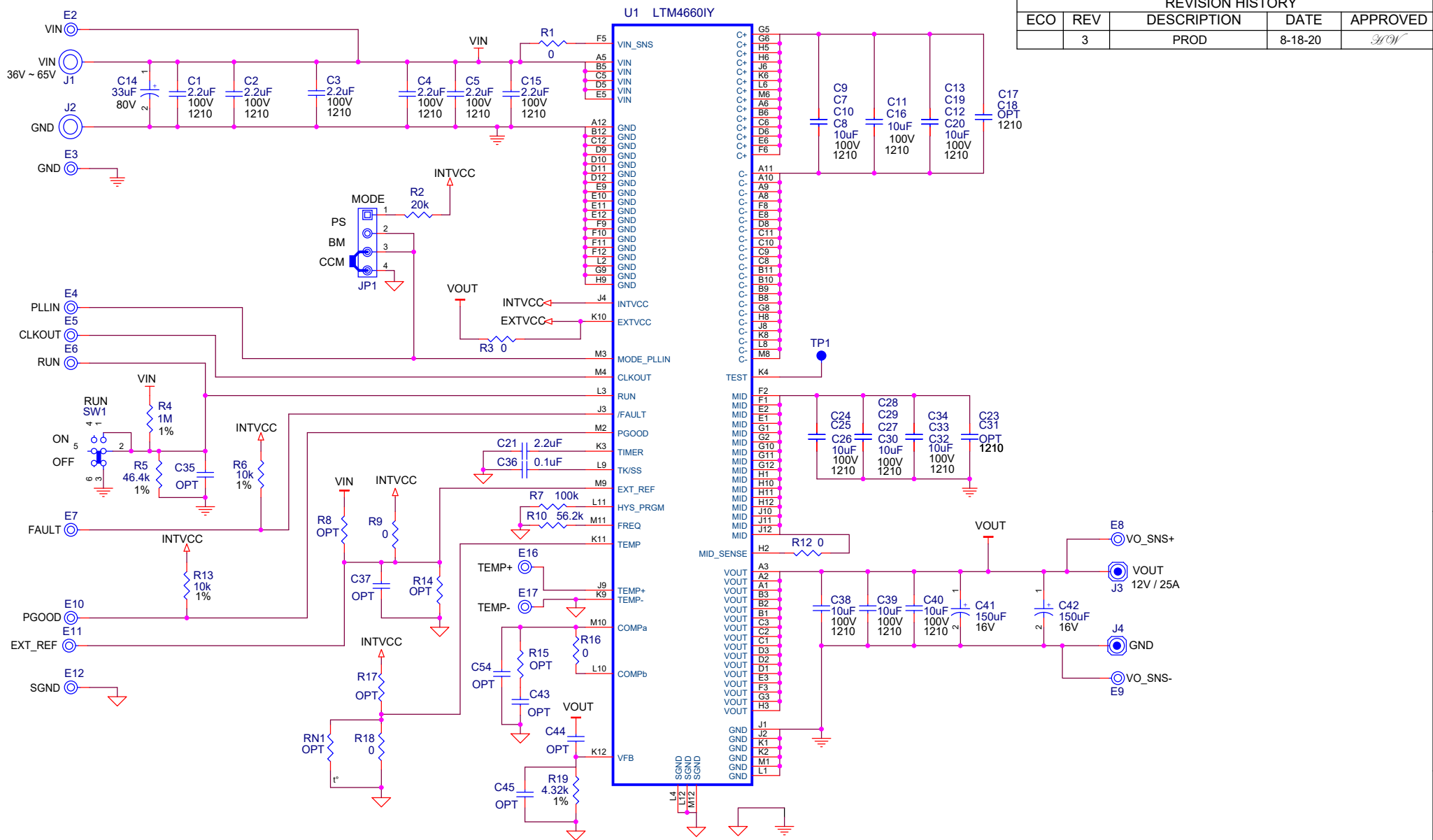


TOOLING HOLES

PCB1 PCB, DC2879A REV01
LB1 LABEL
STNCL1 TOOL, STENCIL, DC2879A REV01

HARDWARE



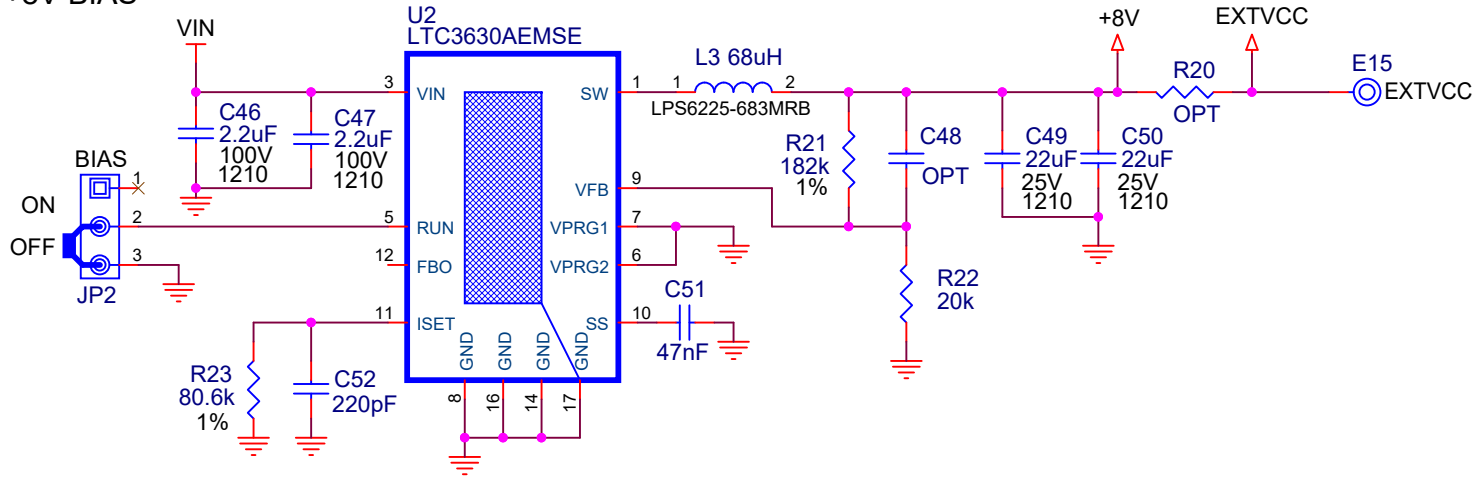


REVISION HISTORY				
ECO	REV	DESCRIPTION	DATE	APPROVED
	3	PROD	8-18-20	<i>AW</i>

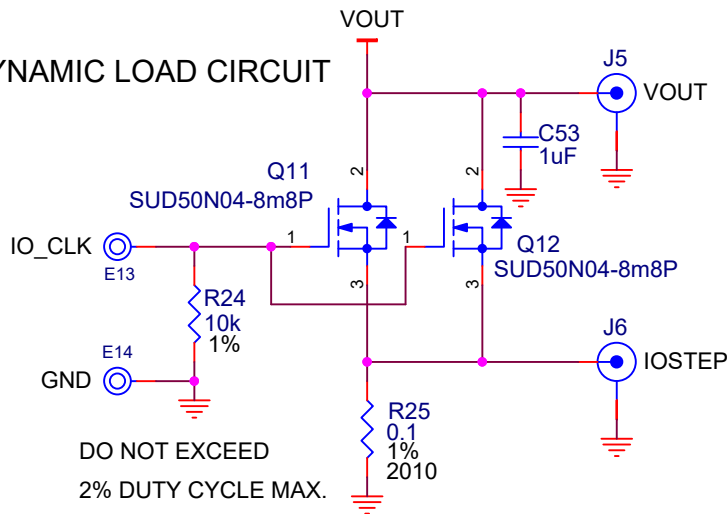
NOTES: UNLESS OTHERWISE SPECIFIED,
1. CAPACITORS AND RESISTORS ARE 0603.

<p>CUSTOMER NOTICE</p> <p>ANALOG DEVICES HAS MADE A BEST EFFORT TO DESIGN A CIRCUIT THAT MEETS CUSTOMER-SUPPLIED SPECIFICATIONS; HOWEVER, IT REMAINS THE CUSTOMER'S RESPONSIBILITY TO VERIFY PROPER AND RELIABLE OPERATION IN THE ACTUAL APPLICATION. COMPONENT SUBSTITUTION AND PRINTED CIRCUIT BOARD LAYOUT MAY SIGNIFICANTLY AFFECT CIRCUIT PERFORMANCE OR RELIABILITY. CONTACT ANALOG DEVICES APPLICATIONS ENGINEERING FOR ASSISTANCE.</p>	<p>APPROVALS</p> <p>PCB DES. <i>AW</i></p> <p>APP ENG. <i>AW</i></p>	<p>ANALOG DEVICES POWER BY LINEAR</p> <p>www.analog.com Phone: (408)432-1900</p>
	<p>THIS CIRCUIT IS PROPRIETARY TO ANALOG DEVICES AND SUPPLIED FOR USE WITH ANALOG DEVICES PARTS.</p>	

+8V BIAS



DYNAMIC LOAD CIRCUIT



CUSTOMER NOTICE

ANALOG DEVICES HAS MADE A BEST EFFORT TO DESIGN A CIRCUIT THAT MEETS CUSTOMER-SUPPLIED SPECIFICATIONS; HOWEVER, IT REMAINS THE CUSTOMER'S RESPONSIBILITY TO VERIFY PROPER AND RELIABLE OPERATION IN THE ACTUAL APPLICATION. COMPONENT SUBSTITUTION AND PRINTED CIRCUIT BOARD LAYOUT MAY SIGNIFICANTLY AFFECT CIRCUIT PERFORMANCE OR RELIABILITY. CONTACT ANALOG DEVICES APPLICATIONS ENGINEERING FOR ASSISTANCE.

THIS CIRCUIT IS PROPRIETARY TO ANALOG DEVICES AND SUPPLIED FOR USE WITH ANALOG DEVICES PARTS.

APPROVALS

PCB DES.	<i>AS</i>
APP ENG.	<i>AW</i>



www.analog.com

Phone: (408)432-1900

TITLE: SCHEMATIC

65V 300W STEP-DOWN MODULE REGULATOR

IC NO. LTM4660IY
SKU NO. DC2879A

SCHEMATIC NO. AND REVISION:
710-DC2879A_REV03

SIZE: N/A

DATE: Tuesday, November 09, 2021

SHEET 2 OF 3