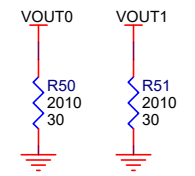


NOTE: UNLESS OTHERWISE SPECIFIED

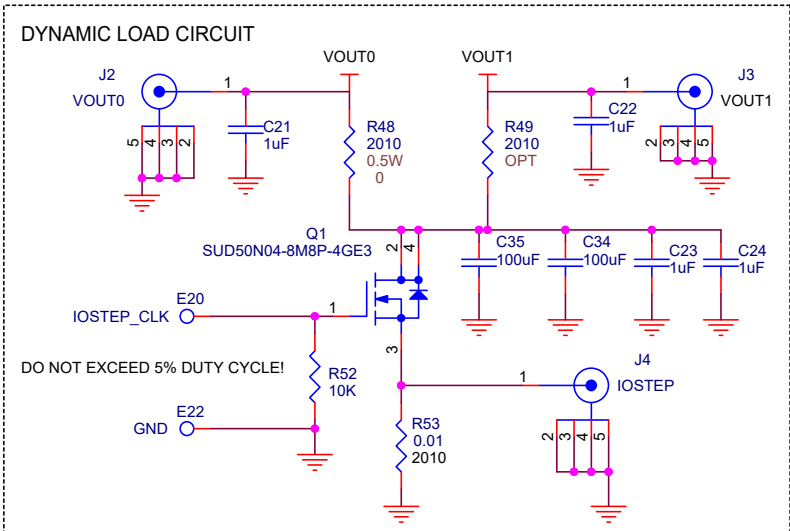
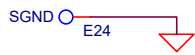
1. ALL RESISTORS AND CAP ARE 0603.
2. WHEN VIN<5.75V, SHORT INTVCC TO VIN WITH R8=0
3. WHEN EXTVCC IS USED, R106=OPEN

CUSTOMER NOTICE		APPROVALS		ANALOG DEVICES		POWER BY LINEAR	
ANALOG DEVICES HAS MADE A BEST EFFORT TO DESIGN A CIRCUIT THAT MEETS CUSTOMER-SUPPLIED SPECIFICATIONS. HOWEVER, IT REMAINS THE CUSTOMER'S RESPONSIBILITY TO VERIFY PROPER AND RELIABLE OPERATION IN THE ACTUAL APPLICATION. COMPONENT SUBSTITUTION AND PRINTED CIRCUIT BOARD LAYOUT MAY SIGNIFICANTLY AFFECT CIRCUIT PERFORMANCE OR RELIABILITY. CONTACT ANALOG DEVICES APPLICATIONS ENGINEERING FOR ASSISTANCE.				PCB DES.	HZ	www.analog.com	
				APP ENG.	Xuebing C.	Phone: (408)432-1900	
				TITLE: SCHEMATIC			
				DUAL 30A OUTPUT STEP-DOWN uMODULE REGULATOR WITH DIGITAL POWER MANAGEMENT			
				IC NO.	LTM4680EY	SCHEMATIC NO. AND REVISION:	
				SKU NO.	DC2844A	DC2844A_REV01	
THIS CIRCUIT IS PROPRIETARY TO ANALOG DEVICES AND SUPPLIED FOR USE WITH ANALOG DEVICES PARTS.				SIZE:	N/A	DATE:	Wednesday, February 06, 2019
						SHEET	1 OF 3

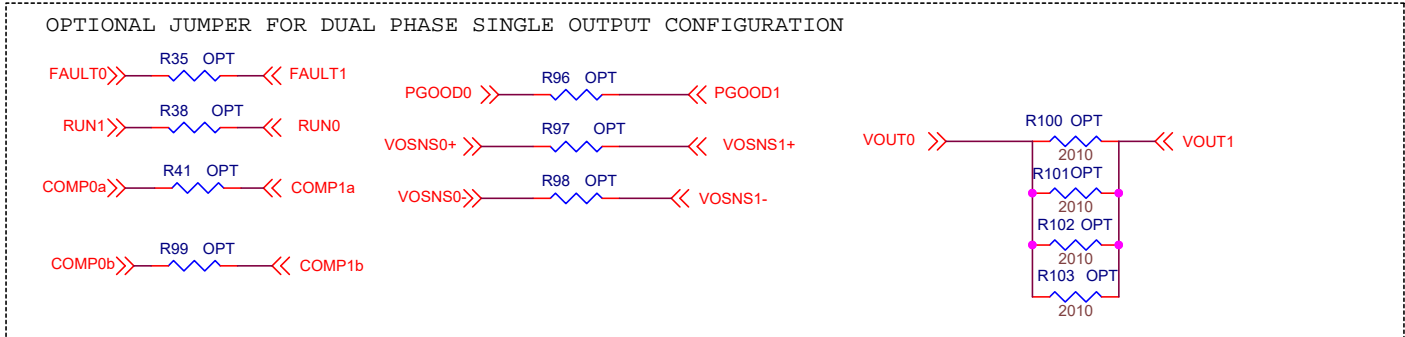
ALL PARTS ON THIS PAGE ARE FOR DEMO ONLY, NOT NEEDED IN CUSTOMER DESIGN



BLEEDER LOADS



DO NOT EXCEED 5% DUTY CYCLE!



CUSTOMER NOTICE
 ANALOG DEVICES HAS MADE A BEST EFFORT TO DESIGN A CIRCUIT THAT MEETS CUSTOMER-SUPPLIED SPECIFICATIONS; HOWEVER, IT REMAINS THE CUSTOMER'S RESPONSIBILITY TO VERIFY PROPER AND RELIABLE OPERATION IN THE ACTUAL APPLICATION. COMPONENT SUBSTITUTION AND PRINTED CIRCUIT BOARD LAYOUT MAY SIGNIFICANTLY AFFECT CIRCUIT PERFORMANCE OR RELIABILITY. CONTACT ANALOG DEVICES APPLICATIONS ENGINEERING FOR ASSISTANCE.

THIS CIRCUIT IS PROPRIETARY TO ANALOG DEVICES AND SUPPLIED FOR USE WITH ANALOG DEVICES PARTS.

APPROVALS	
PCB DES.	HZ
APP ENG.	Xuebing C.

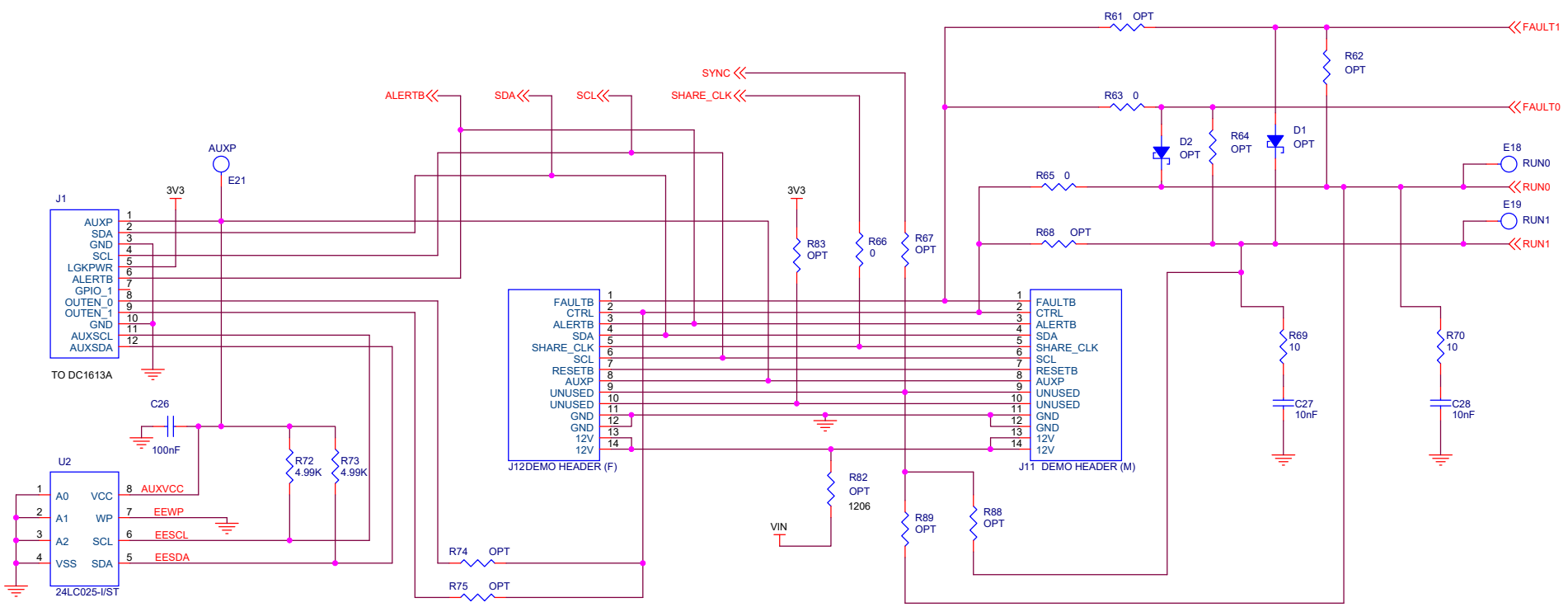
www.analog.com Phone: (408)432-1900

TITLE: SCHEMATIC
DUAL 30A OUTPUT STEP-DOWN uMODULE REGULATOR WITH DIGITAL POWER MANAGEMENT

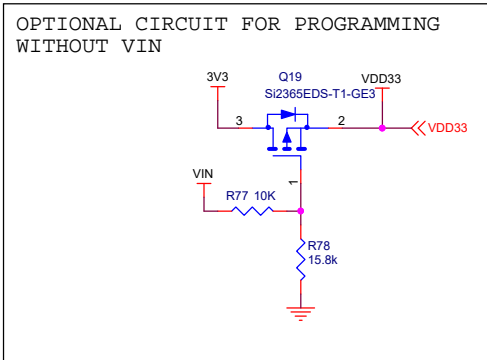
IC NO. LTM4680EY	SCHMATIC NO. AND REVISION: DC2844A_REV01
SKU NO. DC2844A	

SIZE: N/A	DATE: Wednesday, February 06, 2019	SHEET 2 OF 3
-----------	------------------------------------	--------------

ALL PARTS ON THIS PAGE ARE FOR DEMO BOARD ONLY, NOT NEEDED IN CUSTOMER DESIGN



PSM STACKING CONNECTORS:
 J12, FEMALE, CONN RECEPT 2MM DUAL R/A 14POS, Sullins Conn. NPPN072FJFN-RC
 J11, MALE CONN HEADER 14POS 2MM R/A GOLD, Molex Connector Corp. 87760-1416



CUSTOMER NOTICE		APPROVALS		ANALOG DEVICES	POWER BY LINEAR
ANALOG DEVICES HAS MADE A BEST EFFORT TO DESIGN A CIRCUIT THAT MEETS CUSTOMER-SUPPLIED SPECIFICATIONS; HOWEVER, IT REMAINS THE CUSTOMER'S RESPONSIBILITY TO VERIFY PROPER AND RELIABLE OPERATION IN THE ACTUAL APPLICATION. COMPONENT SUBSTITUTION AND PRINTED CIRCUIT BOARD LAYOUT MAY SIGNIFICANTLY AFFECT CIRCUIT PERFORMANCE OR RELIABILITY. CONTACT ANALOG DEVICES APPLICATIONS ENGINEERING FOR ASSISTANCE.		PCB DES.	HZ		
THIS CIRCUIT IS PROPRIETARY TO ANALOG DEVICES AND SUPPLIED FOR USE WITH ANALOG DEVICES PARTS.		APP ENG.	Xuebing C.	TITLE: SCHEMATIC	
				DUAL 30A OUTPUT STEP-DOWN uMODULE REGULATOR WITH DIGITAL POWER MANAGEMENT	
				IC NO. LTM4680EY	SCHMATIC NO. AND REVISION: DC2844A_REV01
				SKU NO. DC2844A	
		SIZE: N/A	DATE: Wednesday, February 06, 2019	SHEET 3 OF 3	