

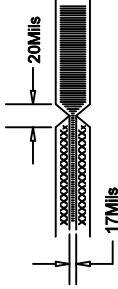
LTC CONFIDENTIAL - For Customer Use Only

REVISION HISTORY

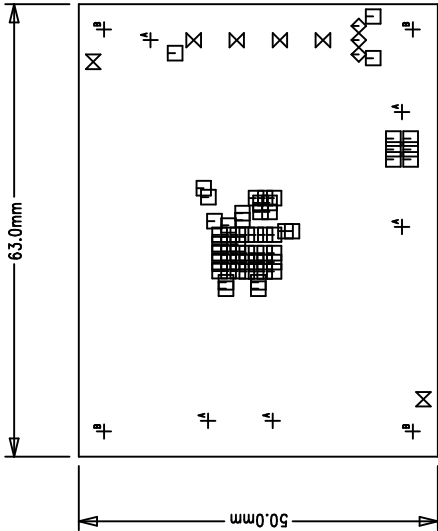
ECO	REV	DESCRIPTION	DATE	APPROVED
	2	PROD	11/01/07	

NOTES: UNLESS OTHERWISE SPECIFIED,

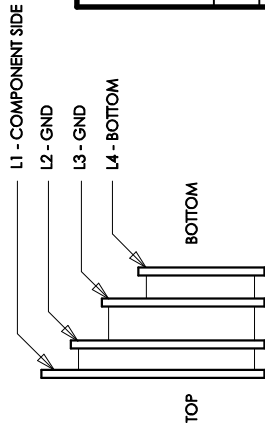
- ARTWORK P/N DC1261A REV 2.
- FAB PER IPC-A-600
- PCB SHALL MEET RoHS COMPLIANCE.
- MATERIAL:
 - LAMINATE: EPOXY FIBERGLASS, NEMA GRADE FR-4
FLAMMABILITY RATING: 94 V-2 MINIMUM.
 - THICKNESS: 1.6 +/- 0.1 mm
 - CLAD: 2 OZ. (50um) EXTERNAL LAYERS.
1 OZ. (25um) COPPER ON TWO INTERNAL LAYERS.
- FINISH:
 - COATING: SOLDERMASK OVER BARE COPPER,
COLOR, GREEN LPI.
 - PLATING: GOLD IMMERSION BOTH SIDES.
 - SILKSCREEN: COMPONENT SIDE WITH WHITE
NON-CONDUCTIVE INK.
- TOLERANCES:
 - WARPAGE: (0.0075mm) MAX. ALONG THE LONGEST DIAG.
AS PER IPC-TM650 METHOD 2.4.22.
 - ETCHING: +0.03mm, -0.3mm OF MASTER PATTERN.
 - REGISTRATION: 0.075mm MAX.
 - MASK THICKNESS: 0.025mm MIN., 0.075mm MAX.
 - HOLE PLATING: 22um +/- 3um.
- SIZE:
 - CUT TO DIMENSIONS AND TOLERANCES SHOWN.
0.00 ARE PRIMARY DATUMS.
 - HOLE DIAMETERS ARE POST-PLATED SIZES.
 - DEBURR AND BREAK ALL SHARP EDGES.
 - DO NOT ALTER ARTWORK e.g. TO ADD LOGO OR DATE CODE.
 - SCORING:



SIZE	QTY	SYM	PLATED	TOL
0.25	59	□	YES	+/-0.08
0.76	3	◇	YES	+/-0.08
1.63	4	⊗	YES	+/-0.08
1.8	2	⊗	NO	+/-0.13
2.4	5	⊕ ^A	YES	+/-0.13
4.74	4	⊕ ^B	NO	+/-0.25



COMPONENT SIDE SHOWN

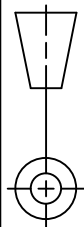


LAYER CONSTRUCTION

CONTRACT NO.

UNLESS OTHERWISE SPECIFIED
DIMENSIONS ARE IN MILLIMETERS
TOLERANCES ON ANGLE ± 1°
.XX ± .25
.XXX ± .127

THIRD ANGLE PROJECTION



DO NOT SCALE DRAWING

APPROVALS	DATE
DRAWN MEI	04/27/07
CHECKED	
APPROVED W, GU	
DESIGNED BY	

TITLE

FAB, LTM8022EV, 1A DC/DC STEP-DOWN
POWER μMODULE

SIZE	CAGE CODE	DWG NO.	REV
A		DC1261A	2
SCALE 1/1	FILENAME: 1261A-2.PCB	SHEET 1 OF 1	



1630 McCarthy Blvd.
Milpitas, CA 95035
Phone: (408)432-1900
Fax: (408)434-0507