

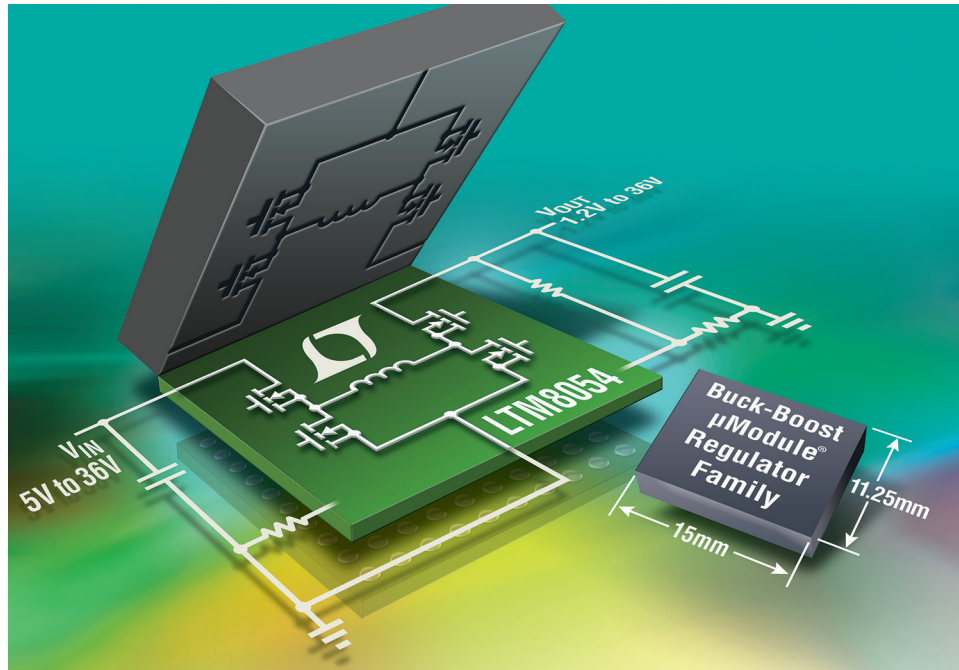
# Buck-Boost DC/DC μModule Power Products

Three Operating Modes:

$V_{IN} > V_{OUT}$

$V_{IN} < V_{OUT}$

$V_{IN} = V_{OUT}$



LTM8054: 4-Switch Buck-Boost with Integrated Inductor

	LTM4605	LTM4607	LTM4609	LTM8054	LTM8055	LTM8056	LTM8045
Topology	4-Switch Buck-Boost						SEPIC
Inductor	External			Internal			Internal
Input Voltage Range	4.5V to 20V	4.5V to 36V	4.5V to 36V	5V to 36V	5V to 36V	5V to 58V	2.8V to 18V
Output Voltage Range	0.8V to 16V	0.8V to 24V	0.8V to 34V	1.2V to 36V	1.2V to 36V	1.2V to 48V	±2.5V to ±15V
I <sub>OUT</sub> Peak (Buck Mode)	12A	10A		5.4A	8.5A	5.5A	up to 0.7A
I <sub>OUT</sub> Peak (Boost Mode : 6V <sub>IN</sub> , 12V <sub>OUT</sub> )	5A		4A	1.8A	3A	1.7A	0.28A
Package Size (mm)	15×15×2.82 LGA		15×15×2.82 LGA 15×15×3.42 BGA	15×11.25×3.42 BGA	15×15×4.92 BGA		6.25×11.25×4.92 BGA
Compatibility	Pin Compatible				Pin Compatible		

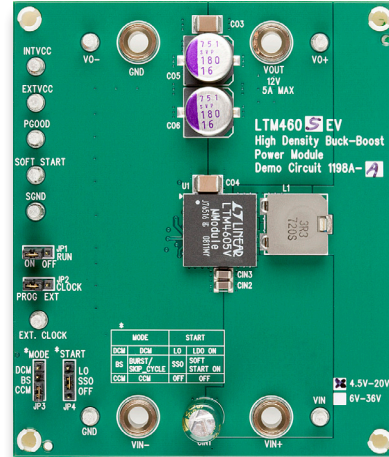
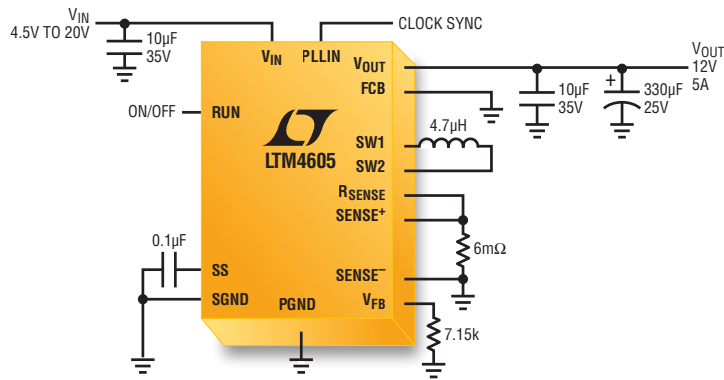


LT, LT, LTC, LTM, Linear Technology, μModule and the Linear logo are registered trademarks of Linear Technology Corporation. All other trademarks are the property of their respective owners.

# Buck-Boost DC/DC $\mu$ Module Power Products

## LTM4605, LTM4607, LTM4609

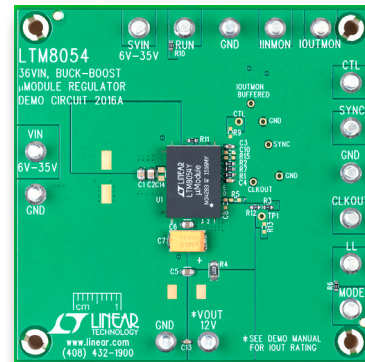
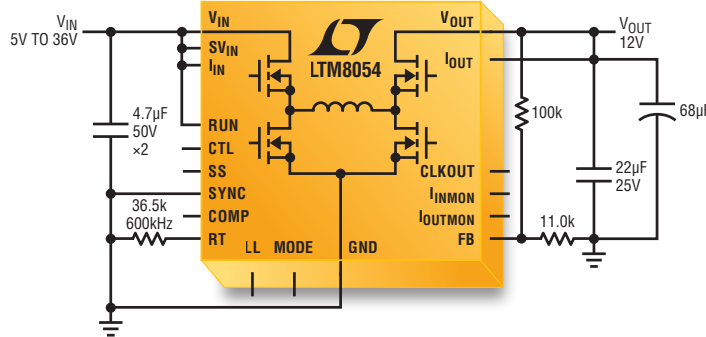
High Power (12A  $I_{OUT}$ : LTM4605 Buck Mode),  
Buck-Boost  $\mu$ Module<sup>®</sup> Regulators



**DC1198B-A: LTM4605 Demo Board**  
4.5V to 20V<sub>IN</sub>, 12V<sub>OUT</sub>

## LTM8054, LTM8055, LTM8056

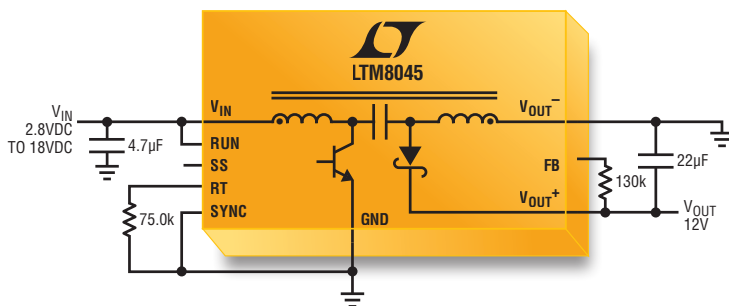
Integrated Inductor, Buck-Boost  $\mu$ Module Regulators



**DC2016A: LTM8054 Demo Board**  
6V to 36V<sub>IN</sub>, 12V<sub>OUT</sub>

## LTM8045

SEPIC or Inverting  $\mu$ Module Regulators



**DC1533A: LTM8045 Demo Board**  
2.8V to 18V<sub>IN</sub>, 5V or -5V<sub>OUT</sub>