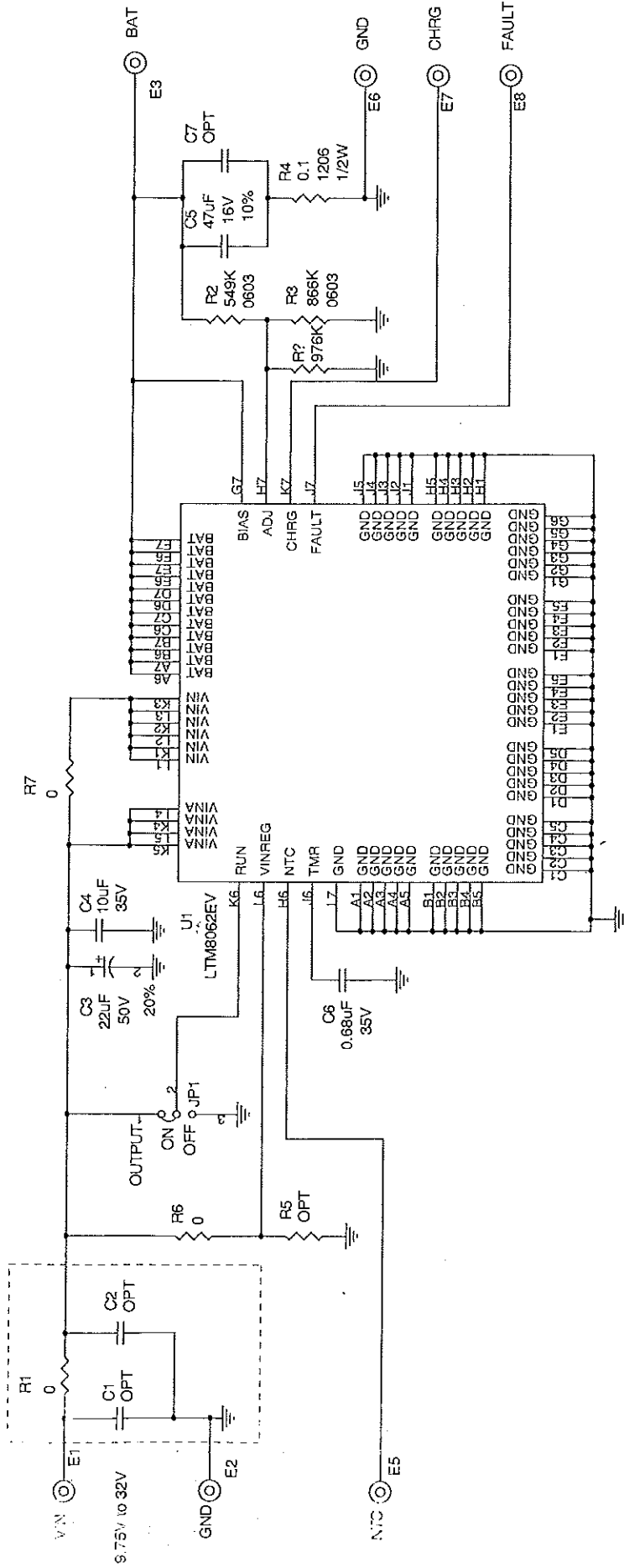


REVISION HISTORY

ECO	REV	DESCRIPTION	APPROVED	DATE
1	1	1ST PROTOTYPE	JESUS R.	11-02-09



1530 McCarthy Blvd.
Milpitas, CA 95035
Phone: (408)432-1900
Fax: (408)434-6577
LTC Confidential-For Customer Use Only

TITLE: SCHEMATIC		32V, 2A mMODULE	
POWER TRACKING BATTERY CHARGER			
SIZE	IC NO.	LTM8062EV	
A		DEMO CIRCUIT 1621A	
REV		1	
DATE: Wednesday, July 14, 2010		SHEET 1 OF 1	

CONTRACT NO.	
APPROVALS	
PCB DES. ANTONIAK	
ENG. JESUS R	
CUSTOMER NOTICE	<p>LINEAR TECHNOLOGY HAS MADE A BEST EFFORT TO DESIGN A CIRCUIT THAT MEETS CUSTOMER-SUPPLIED SPECIFICATIONS. HOWEVER, IT REMAINS THE CUSTOMER'S RESPONSIBILITY TO VERIFY PROPER AND RELIABLE OPERATION IN THE ACTUAL APPLICATION. COMPONENT SUBSTITUTION AND PRINTED CIRCUIT BOARD LAYOUT MAY SIGNIFICANTLY AFFECT CIRCUIT PERFORMANCE OR RELIABILITY. CONTACT LINEAR TECHNOLOGY APPLICATIONS ENGINEERING FOR ASSISTANCE.</p> <p>THIS CIRCUIT IS PROPRIETARY TO LINEAR TECHNOLOGY AND SUPPLIED FOR USE WITH LINEAR TECHNOLOGY PARTS.</p>