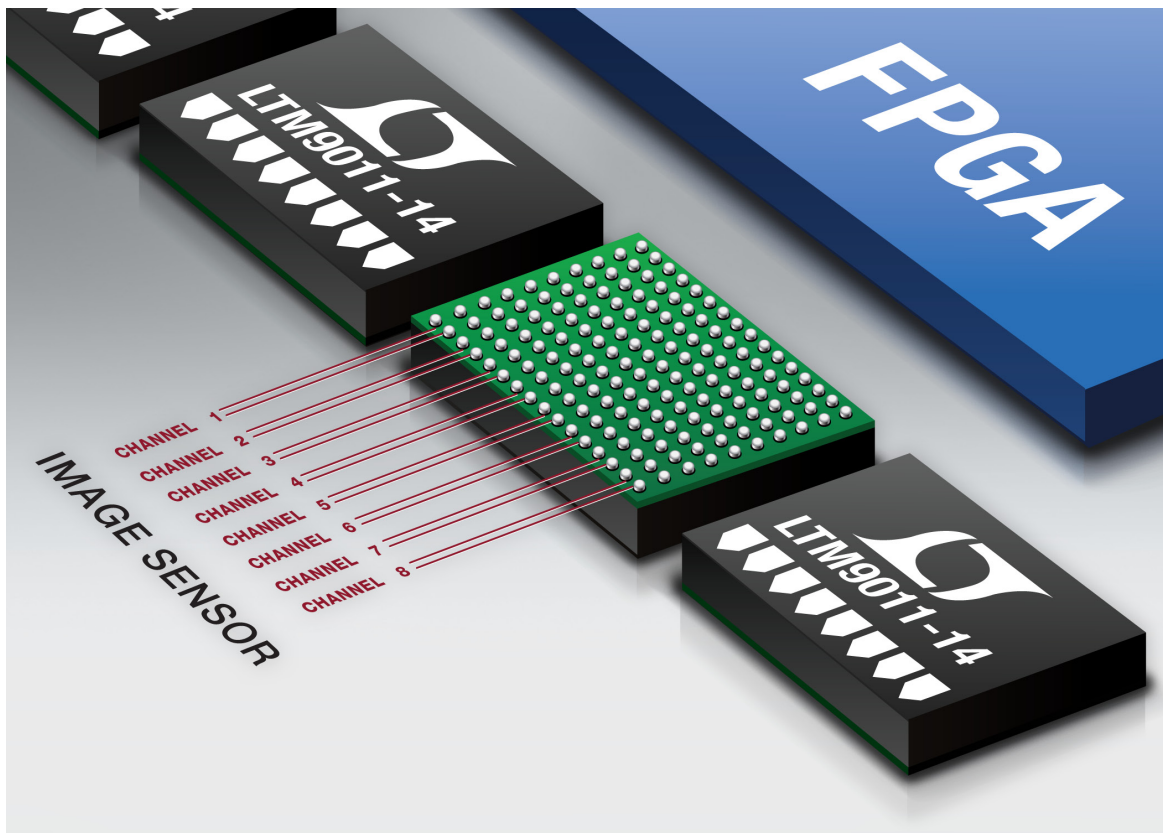


# 14-Bit 125Msps, Octal ADC

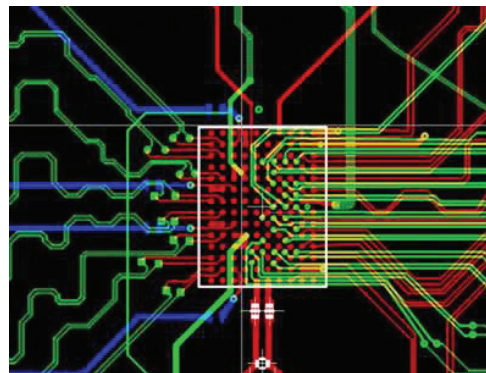


The LTM<sup>®</sup>9011-14 is part of a family of 14-bit, 25Msps to 125Msps octal ADCs that provide excellent AC performance and low power in a small form factor. The BGA  $\mu$ Module<sup>®</sup> packaging allows the integration of bypass capacitance and provides a flow-through pinout, reducing the required board area for routing data I/O lines and simplifying layout.

## Features

- 8-Channel Simultaneous Sampling ADC Family
- 125Msps/105Msps/80Msps Versions
  - 140mW/113mW/94mW per Channel
- 65Msps/40Msps/25Msps Versions
  - 88mW/59mW/46mW per Channel
- 73.1dB SNR, Up to 90dB SFDR
- Single 1.8V Supply
- Serial LVDS Outputs: 1 or 2 Bits per Channel
- Selectable Input Ranges:  $1V_{P-P}$  to  $2V_{P-P}$
- 800MHz Full-Power Bandwidth S/H
- Shutdown and Nap Modes
- Internal Bypass Capacitance, No External Components
- 140-Pin (11.25mm  $\times$  9mm) BGA Package
- Easy Evaluation Using the PScope<sup>™</sup> Tool

LTM9011 (DC1751A)  
Demo Board Layout



LT, LT, LTC, LTM, Linear Technology and the Linear logo are registered trademarks and PScope is a trademark of Linear Technology Corporation. All other trademarks are the property of their respective owners.

# High Speed ADC Portfolio

	10Msps	20Msps	25Msps	40Msps	65Msps	80Msps	105Msps	125Msps to 150Msps	170Msps	210Msps	250Msps	310Msps		
16-Bit	Single	2202	2201	2203	2204	2205	2206	2207	2208	2209				
						2215	2216	2217						
						2272	2273	2274						
			2269	2160	2161	2162	2163	2164	2165					
	Dual	2270	2180	2181	2182	2183	2184	2185						
		2271	2190	2191	2192	2193	2194	2195						
14-Bit	Single	2245		2246	2247	2248	2249	2254	2255					
				2256-14	2257-14	2258-14	2259-14	2260-14	2261-14	2262-14	2150-14	2151-14	2152-14	2153-14
	Dual	2295		2296	2297	2298	2299	2284	2285		2155-14	2156-14	2157-14	2158-14
				2140-14	2141-14	2142-14	2143-14	2144-14	2145-14					
				2263-14	2264-14	2265-14	2266-14	2267-14	2268-14					
	Quad			2170-14	2171-14	2172-14	2173-14	2174-14	2175-14					
Octal			9006-14	9007-14	9008-14	9009-14	9010-14	9011-14						
12-Bit	Single	2225		2226	2227	2228	2229	2252	2253	2221	2220	2241-12	2242-12	
				2256-12	2257-12	2258-12	2259-12	2260-12	2261-12	2262-12	2150-12	2151-12	2152-12	2153-12
	Dual	2290		2291	2292	2293	2294	2282	2283		2155-12	2156-12	2157-12	2158-12
				2140-12	2141-12	2142-12	2143-12	2144-12	2145-12					
				2263-12	2264-12	2265-12	2266-12	2267-12	2268-12					
	Quad			2170-12	2171-12	2172-12	2173-12	2174-12	2175-12					
10-Bit	Single			2236	2237	2238	2239	2250	2251	2231	2230	2241-10	2242-10	
Dual														
			2286	2287	2288	2289	2280	2281						

## Parallel



1.8V Lowest Power, Single & Dual ADCs, CMOS/DDR CMOS/DDR LVDS



3.3V High SNR/SFDR ADCs, CMOS/LVDS



3.3V/2.5V ADCs, CMOS/LVDS



1.8V High IF Undersampling Single & Dual ADCs, DDR LVDS



3V ADCs, CMOS  
3V Dual ADCs, CMOS

## Serial



3.3V 2-Wire Serial JESD204 ADCs  
1.8V Dual ADCs, Serial LVDS



1.8V Dual ADCs, Serial LVDS  
1.8V Quad ADCs, Serial LVDS  
1.8V Octal ADCs, Serial LVDS