

ETERNA USB MANAGER - DC2274A

Content:

1. TITLE PAGE
2. USB INTERFACE
3. LTP5902, INDICATOR, TIMING INPUT
4. MEMORY, LATCHES, PULSE GEN, POWER CONVERSION

Revision History:

Rev	Description	ECO	Author
01	Re-spin based on 700-0235-0003 REV1	1502	KL

Notes:

1. Assembly Options:

2. Associated Documents



PCB FAB
600-0235-0004 REV1



ASY DWG
705-0235-0004 REV1



BOM
700-0235-0004 REV1

CUSTOMER NOTICE

LINEAR TECHNOLOGY HAS MADE A BEST EFFORT TO DESIGN A CIRCUIT THAT MEETS CUSTOMER-SUPPLIED SPECIFICATIONS; HOWEVER, IT REMAINS THE CUSTOMER'S RESPONSIBILITY TO VERIFY PROPER AND RELIABLE OPERATION IN THE ACTUAL APPLICATION. COMPONENT SUBSTITUTION AND PRINTED CIRCUIT BOARD LAYOUT MAY SIGNIFICANTLY AFFECT CIRCUIT PERFORMANCE OR RELIABILITY. CONTACT LINEAR TECHNOLOGY APPLICATIONS ENGINEERING FOR ASSISTANCE.

THIS CIRCUIT IS PROPRIETARY TO LINEAR TECHNOLOGY AND SUPPLIED FOR USE WITH LINEAR TECHNOLOGY PARTS.

APPROVALS

PCB DES.	AK
APP ENG.	JON M.

SCALE = NONE



1630 McCarthy Blvd.
Milpitas, CA 95035
Phone: (408)432-1900 www.linear.com
Fax: (408)434-0507
LTC Confidential-For Customer Use Only

TITLE: SCHEMATIC
PCA SCH, ETERNA USB MANAGER WITH
CASTELLATED MODULE DRAGON

SIZE N/A	IC NO. 710-0235-0004 DEMO CIRCUIT 2274A	REV. 1
--------------------	---	------------------

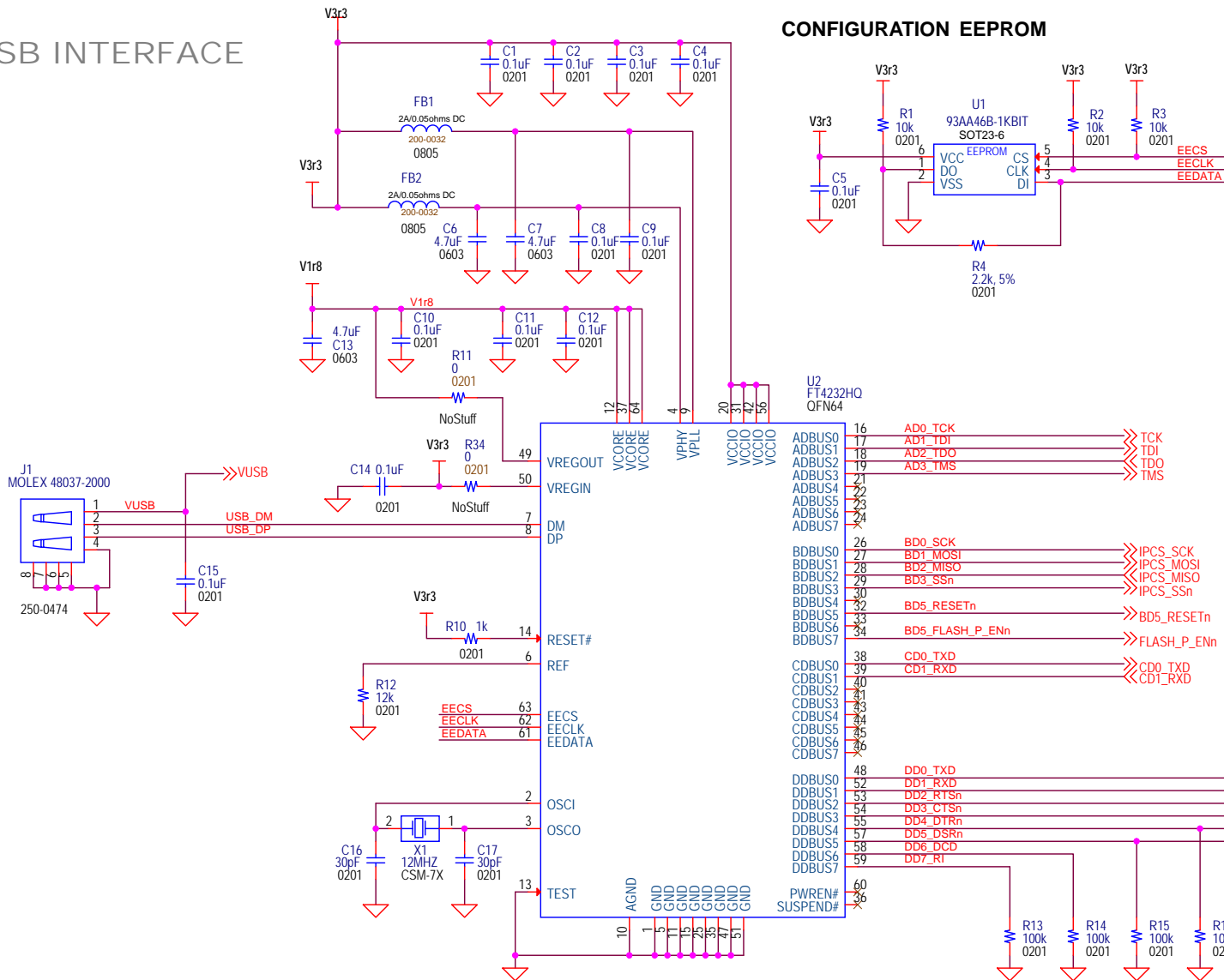
DATE: Thursday, September 03, 2015

SHEET 1 OF 4

USB INTERFACE

CONFIGURATION EEPROM

PULL FOR XLTR POWER OFF STATE (HIZ OUTPUTS)



CUSTOMER NOTICE		APPROVALS		1630 McCarthy Blvd. Milpitas, CA 95035 Phone: (408)432-1900 www.linear.com Fax: (408)434-0507 LTC Confidential-For Customer Use Only		
LINEAR TECHNOLOGY HAS MADE A BEST EFFORT TO DESIGN A CIRCUIT THAT MEETS CUSTOMER-SUPPLIED SPECIFICATIONS; HOWEVER, IT REMAINS THE CUSTOMER'S RESPONSIBILITY TO VERIFY PROPER AND RELIABLE OPERATION IN THE ACTUAL APPLICATION. COMPONENT SUBSTITUTION AND PRINTED CIRCUIT BOARD LAYOUT MAY SIGNIFICANTLY AFFECT CIRCUIT PERFORMANCE OR RELIABILITY. CONTACT LINEAR TECHNOLOGY APPLICATIONS ENGINEERING FOR ASSISTANCE.		PCB DES.	AK	TITLE: SCHEMATIC PCA SCH, ETERNA USB MANAGER WITH CASTELLATED MODULE DRAGON		
		APP ENG.	JON M.			
THIS CIRCUIT IS PROPRIETARY TO LINEAR TECHNOLOGY AND SUPPLIED FOR USE WITH LINEAR TECHNOLOGY PARTS.		SCALE = NONE		SIZE N/A	IC NO. 710-0235-0004 DEMO CIRCUIT 2274A	REV. 1
				DATE: Thursday, September 03, 2015	SHEET 2 OF 4	

LTP5902, INDICATOR, TIMING INPUT

CUSTOMER NOTICE

LINEAR TECHNOLOGY HAS MADE A BEST EFFORT TO DESIGN A CIRCUIT THAT MEETS CUSTOMER-SUPPLIED SPECIFICATIONS; HOWEVER, IT REMAINS THE CUSTOMER'S RESPONSIBILITY TO VERIFY PROPER AND RELIABLE OPERATION IN THE ACTUAL APPLICATION. COMPONENT SUBSTITUTION AND PRINTED CIRCUIT BOARD LAYOUT MAY SIGNIFICANTLY AFFECT CIRCUIT PERFORMANCE OR RELIABILITY. CONTACT LINEAR TECHNOLOGY APPLICATIONS ENGINEERING FOR ASSISTANCE.

APPROVALS

PCB DES.	AK
APP ENG.	JON M.

TITLE: SCHEMATIC
PCA SCH, ETERNA USB MANAGER WITH CASTELLATED MODULE DRAGON

SIZE: N/A
IC NO.: 710-0235-0004
DEMO CIRCUIT 2274A

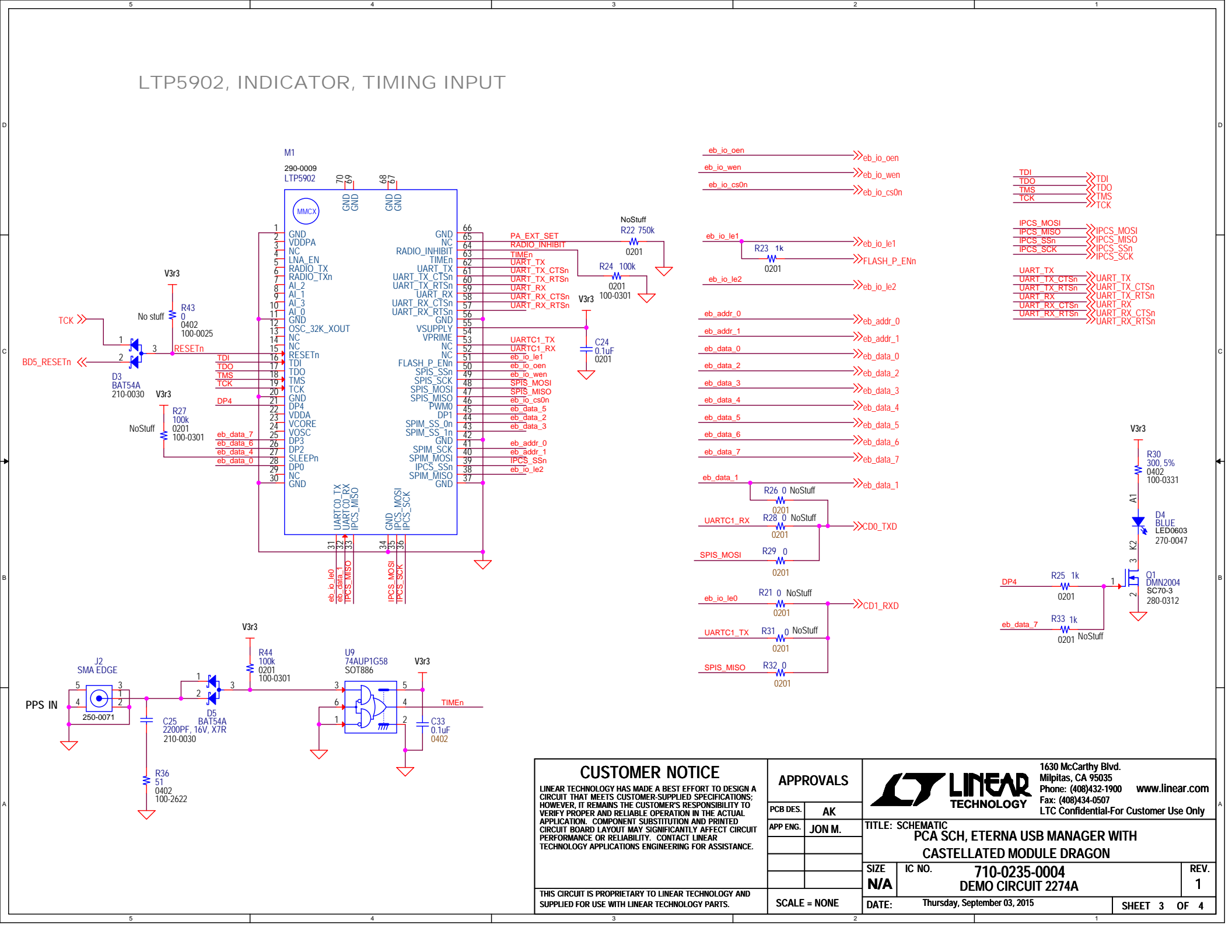
REV.: 1

DATE: Thursday, September 03, 2015
SHEET 3 OF 4

SCALE = NONE

THIS CIRCUIT IS PROPRIETARY TO LINEAR TECHNOLOGY AND SUPPLIED FOR USE WITH LINEAR TECHNOLOGY PARTS.

**1630 McCarthy Blvd.
Milpitas, CA 95035
Phone: (408)432-1900 www.linear.com
Fax: (408)434-0507
LTC Confidential-For Customer Use Only**

[illegible]

LTP5902, INDICATOR, TIMING INPUT

LTP5902, INDICATOR, TIMING INPUT

CUSTOMER NOTICE

LINEAR TECHNOLOGY HAS MADE A BEST EFFORT TO DESIGN A CIRCUIT THAT MEETS CUSTOMER-SUPPLIED SPECIFICATIONS; HOWEVER, IT REMAINS THE CUSTOMER'S RESPONSIBILITY TO VERIFY PROPER AND RELIABLE OPERATION IN THE ACTUAL APPLICATION. COMPONENT SUBSTITUTION AND PRINTED CIRCUIT BOARD LAYOUT MAY SIGNIFICANTLY AFFECT CIRCUIT PERFORMANCE OR RELIABILITY. CONTACT LINEAR TECHNOLOGY APPLICATIONS ENGINEERING FOR ASSISTANCE.

APPROVALS

PCB DES.	AK
APP ENG.	JON M.

SCALE = NONE

LINEAR TECHNOLOGY

1630 McCarthy Blvd.
Milpitas, CA 95035
Phone: (408)432-1900
Fax: (408)434-0507
www.linear.com
LTC Confidential-For Customer Use Only

TITLE: SCHEMATIC

PCA SCH, ETERNA USB MANAGER WITH CASTELLATED MODULE DRAGON

SIZE N/A

IC NO. 710-0235-0004

REV. 1

DATE: Thursday, September 03, 2015

SHEET 3 OF 4

[illegible]

LTP5902, INDICATOR, TIMING INPUT

The schematic diagram illustrates the internal components and pin connections of the LTP5902 indicator module. The central component is the LTP5902 IC (M1), which includes various functional blocks such as RADIO_INHIBIT, UART_TX, UART_RX, SPIS_MOSI, SPIS_MISO, IPICS_SS, and IPICS_SCK. The module is powered by a V3r3 supply and includes several resistors (R27, R28, R29, R30, R31, R32, R33, R34, R35, R36, R37, R38, R39, R40, R41, R42, R43, R44, R45, R46, R47, R48, R49, R50, R51, R52, R53, R54, R55, R56, R57, R58, R59, R60, R61, R62, R63, R64, R65, R66, R67, R68, R69, R70, R71, R72, R73, R74, R75, R76, R77, R78, R79, R80, R81, R82, R83, R84, R85, R86, R87, R88, R89, R90, R91, R92, R93, R94, R95, R96, R97, R98, R99, R100) and capacitors (C25, C26, C27, C28, C29, C30, C31, C32, C33, C34, C35, C36, C37, C38, C39, C40, C41, C42, C43, C44, C45, C46, C47, C48, C49, C50, C51, C52, C53, C54, C55, C56, C57, C58, C59, C60, C61, C62, C63, C64, C65, C66, C67, C68, C69, C70, C71, C72, C73, C74, C75, C76, C77, C78, C79, C80, C81, C82, C83, C84, C85, C86, C87, C88, C89, C90, C91, C92, C93, C94, C95, C96, C97, C98, C99, C100). The module also features a timing input section with a PPS IN signal, a J2 SMA EDGE connector, and a D5 BAT54A diode. The output section includes a CD0_TXD signal, a CD1_RXD signal, and a CD0_TXD signal. The module is connected to a USB manager via a PCA SCH, ETERNA USB MANAGER WITH CASTELLATED MODULE DRAGON interface.

CUSTOMER NOTICE

LINEAR TECHNOLOGY HAS MADE A BEST EFFORT TO DESIGN A CIRCUIT THAT MEETS CUSTOMER-SUPPLIED SPECIFICATIONS; HOWEVER, IT REMAINS THE CUSTOMER'S RESPONSIBILITY TO VERIFY PROPER AND RELIABLE OPERATION IN THE ACTUAL APPLICATION. COMPONENT SUBSTITUTION AND PRINTED CIRCUIT BOARD LAYOUT MAY SIGNIFICANTLY AFFECT CIRCUIT PERFORMANCE OR RELIABILITY. CONTACT LINEAR TECHNOLOGY APPLICATIONS ENGINEERING FOR ASSISTANCE.

APPROVALS

PCB DES.	AK
APP ENG.	JON M.

TITLE: SCHEMATIC
PCA SCH, ETERNA USB MANAGER WITH CASTELLATED MODULE DRAGON

SIZE: N/A
IC NO.: 710-0235-0004
DEMO CIRCUIT 2274A

DATE: Thursday, September 03, 2015

SHEET 3 OF 4

LTP5902, INDICATOR, TIMING INPUT

CUSTOMER NOTICE
LINEAR TECHNOLOGY HAS MADE A BEST EFFORT TO DESIGN A CIRCUIT THAT MEETS CUSTOMER-SUPPLIED SPECIFICATIONS; HOWEVER, IT REMAINS THE CUSTOMER'S RESPONSIBILITY TO VERIFY PROPER AND RELIABLE OPERATION IN THE ACTUAL APPLICATION. COMPONENT SUBSTITUTION AND PRINTED CIRCUIT BOARD LAYOUT MAY SIGNIFICANTLY AFFECT CIRCUIT PERFORMANCE OR RELIABILITY. CONTACT LINEAR TECHNOLOGY APPLICATIONS ENGINEERING FOR ASSISTANCE.

APPROVALS		TITLE: SCHEMATIC PCA SCH, ETERNA USB MANAGER WITH CASTELLATED MODULE DRAGON	
PCB DES.	AK	SIZE	N/A
APP ENG.	JON M.	IC NO.	710-0235-0004 DEMO CIRCUIT 2274A
		DATE:	Thursday, September 03, 2015
SCALE = NONE		SHEET	3 OF 4

1630 McCarthy Blvd.
Milpitas, CA 95035
Phone: (408)432-1900 www.linear.com
Fax: (408)434-0507
LTC Confidential-For Customer Use Only

LTP5902, INDICATOR, TIMING INPUT

LTP5902, INDICATOR, TIMING INPUT

CUSTOMER NOTICE

LINEAR TECHNOLOGY HAS MADE A BEST EFFORT TO DESIGN A CIRCUIT THAT MEETS CUSTOMER-SUPPLIED SPECIFICATIONS; HOWEVER, IT REMAINS THE CUSTOMER'S RESPONSIBILITY TO VERIFY PROPER AND RELIABLE OPERATION IN THE ACTUAL APPLICATION. COMPONENT SUBSTITUTION AND PRINTED CIRCUIT BOARD LAYOUT MAY SIGNIFICANTLY AFFECT CIRCUIT PERFORMANCE OR RELIABILITY. CONTACT LINEAR TECHNOLOGY APPLICATIONS ENGINEERING FOR ASSISTANCE.

APPROVALS

PCB DES.	AK
APP ENG.	JON M.

SCALE = NONE

LINEAR TECHNOLOGY

1630 McCarthy Blvd.
Milpitas, CA 95035
Phone: (408)432-1900
Fax: (408)434-0507
www.linear.com
LTC Confidential-For Customer Use Only

TITLE: SCHEMATIC

PCA SCH, ETERNA USB MANAGER WITH CASTELLATED MODULE DRAGON

SIZE N/A

IC NO. 710-0235-0004

DEMO CIRCUIT 2274A

REV. 1

DATE: Thursday, September 03, 2015

SHEET 3 OF 4

LTP5902, INDICATOR, TIMING INPUT

CUSTOMER NOTICE

LINEAR TECHNOLOGY HAS MADE A BEST EFFORT TO DESIGN A CIRCUIT THAT MEETS CUSTOMER-SUPPLIED SPECIFICATIONS; HOWEVER, IT REMAINS THE CUSTOMER'S RESPONSIBILITY TO VERIFY PROPER AND RELIABLE OPERATION IN THE ACTUAL APPLICATION. COMPONENT SUBSTITUTION AND PRINTED CIRCUIT BOARD LAYOUT MAY SIGNIFICANTLY AFFECT CIRCUIT PERFORMANCE OR RELIABILITY. CONTACT LINEAR TECHNOLOGY APPLICATIONS ENGINEERING FOR ASSISTANCE.

APPROVALS

PCB DES.	AK
APP ENG.	JON M.

THIS CIRCUIT IS PROPRIETARY TO LINEAR TECHNOLOGY AND SUPPLIED FOR USE WITH LINEAR TECHNOLOGY PARTS.

SCALE = NONE

LINEAR TECHNOLOGY

1630 McCarthy Blvd.
Milpitas, CA 95035
Phone: (408)432-1900
Fax: (408)434-0507
www.linear.com
LTC Confidential-For Customer Use Only

TITLE: SCHEMATIC
PCA SCH, ETERNA USB MANAGER WITH CASTELLATED MODULE DRAGON

SIZE N/A **IC NO. 710-0235-0004** **REV. 1**
DEMO CIRCUIT 2274A

DATE: Thursday, September 03, 2015 **SHEET 3 OF 4**

LTP5902, INDICATOR, TIMING INPUT

CUSTOMER NOTICE

LINEAR TECHNOLOGY HAS MADE A BEST EFFORT TO DESIGN A CIRCUIT THAT MEETS CUSTOMER-SUPPLIED SPECIFICATIONS; HOWEVER, IT REMAINS THE CUSTOMER'S RESPONSIBILITY TO VERIFY PROPER AND RELIABLE OPERATION IN THE ACTUAL APPLICATION. COMPONENT SUBSTITUTION AND PRINTED CIRCUIT BOARD LAYOUT MAY SIGNIFICANTLY AFFECT CIRCUIT PERFORMANCE OR RELIABILITY. CONTACT LINEAR TECHNOLOGY APPLICATIONS ENGINEERING FOR ASSISTANCE.

APPROVALS

PCB DES.	AK
APP ENG.	JON M.

THIS CIRCUIT IS PROPRIETARY TO LINEAR TECHNOLOGY AND SUPPLIED FOR USE WITH LINEAR TECHNOLOGY PARTS.

SCALE = NONE

LINEAR TECHNOLOGY

1630 McCarthy Blvd.
Milpitas, CA 95035
Phone: (408)432-1900
Fax: (408)434-0507
LTC Confidential-For Customer Use Only

TITLE: SCHEMATIC
PCA SCH, ETERNA USB MANAGER WITH CASTELLATED MODULE DRAGON

SIZE	IC NO.	REV.
N/A	710-0235-0004 DEMO CIRCUIT 2274A	1

DATE: Thursday, September 03, 2015
SHEET 3 OF 4

LTP5902, INDICATOR, TIMING INPUT

CUSTOMER NOTICE

LINEAR TECHNOLOGY HAS MADE A BEST EFFORT TO DESIGN A CIRCUIT THAT MEETS CUSTOMER-SUPPLIED SPECIFICATIONS; HOWEVER, IT REMAINS THE CUSTOMER'S RESPONSIBILITY TO VERIFY PROPER AND RELIABLE OPERATION IN THE ACTUAL APPLICATION. COMPONENT SUBSTITUTION AND PRINTED CIRCUIT BOARD LAYOUT MAY SIGNIFICANTLY AFFECT CIRCUIT PERFORMANCE OR RELIABILITY. CONTACT LINEAR TECHNOLOGY APPLICATIONS ENGINEERING FOR ASSISTANCE.

APPROVALS

PCB DES.	AK
APP ENG.	JON M.

SCALE = NONE

LINEAR TECHNOLOGY

1630 McCarthy Blvd.
Milpitas, CA 95035
Phone: (408)432-1900
Fax: (408)434-0507
LTC Confidential-For Customer Use Only

TITLE: SCHEMATIC

PCA SCH, ETERNA USB MANAGER WITH CASTELLATED MODULE DRAGON

SIZE N/A

IC NO. 710-0235-0004

REV. 1

DATE: Thursday, September 03, 2015

SHEET 3 OF 4

LTP5902, INDICATOR, TIMING INPUT

CUSTOMER NOTICE

LINEAR TECHNOLOGY HAS MADE A BEST EFFORT TO DESIGN A CIRCUIT THAT MEETS CUSTOMER-SUPPLIED SPECIFICATIONS; HOWEVER, IT REMAINS THE CUSTOMER'S RESPONSIBILITY TO VERIFY PROPER AND RELIABLE OPERATION IN THE ACTUAL APPLICATION. COMPONENT SUBSTITUTION AND PRINTED CIRCUIT BOARD LAYOUT MAY SIGNIFICANTLY AFFECT CIRCUIT PERFORMANCE OR RELIABILITY. CONTACT LINEAR TECHNOLOGY APPLICATIONS ENGINEERING FOR ASSISTANCE.

APPROVALS

PCB DES.	AK
APP ENG.	JON M.

SCALE = NONE

LINEAR TECHNOLOGY

1630 McCarthy Blvd.
Milpitas, CA 95035
Phone: (408)432-1900
Fax: (408)434-0507
LTC Confidential-For Customer Use Only

TITLE: SCHEMATIC

PCA SCH, ETERNA USB MANAGER WITH CASTELLATED MODULE DRAGON

SIZE N/A

IC NO. 710-0235-0004

REV. 1

DATE: Thursday, September 03, 2015

SHEET 3 OF 4

LTP5902, INDICATOR, TIMING INPUT

Customer Notice:

LINEAR TECHNOLOGY HAS MADE A BEST EFFORT TO DESIGN A CIRCUIT THAT MEETS CUSTOMER-SUPPLIED SPECIFICATIONS; HOWEVER, IT REMAINS THE CUSTOMER'S RESPONSIBILITY TO VERIFY PROPER AND RELIABLE OPERATION IN THE ACTUAL APPLICATION. COMPONENT SUBSTITUTION AND PRINTED CIRCUIT BOARD LAYOUT MAY SIGNIFICANTLY AFFECT CIRCUIT PERFORMANCE OR RELIABILITY. CONTACT LINEAR TECHNOLOGY APPLICATIONS ENGINEERING FOR ASSISTANCE.

Approvals:

PCB DES.	AK
APP ENG.	JON M.

Scale: NONE

Title: SCHEMATIC
PCA SCH, ETERNA USB MANAGER WITH CASTELLATED MODULE DRAGON

Size: N/A

IC NO.: 710-0235-0004
DEMO CIRCUIT 2274A

Rev.: 1

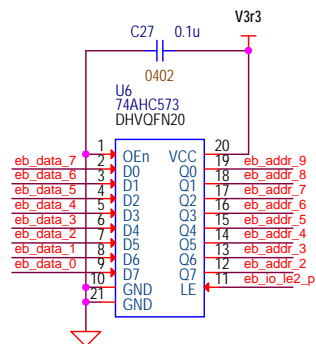
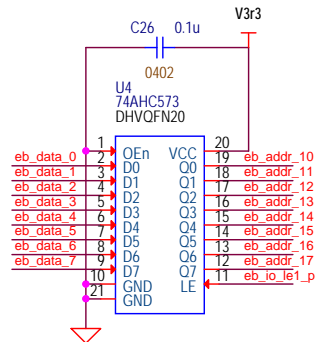
Date: Thursday, September 03, 2015

Sheet: 3 OF 4

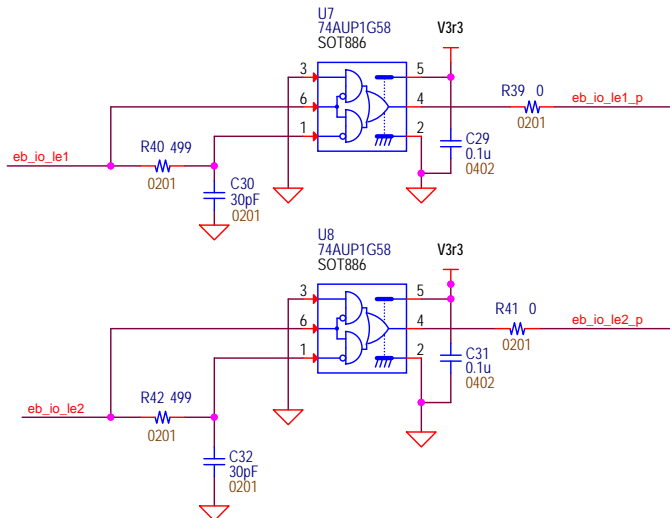
MEMORY, LATCHES, PULSE GEN, POWER CONVERSION

25 mil traces for V3r3

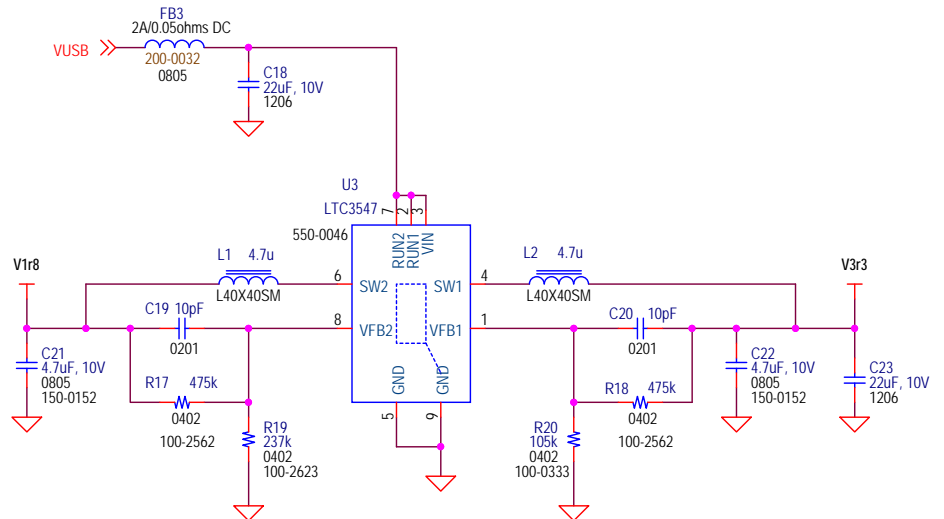
eb_io_cs0n
eb_io_le1
eb_io_le2
eb_addr_0
eb_addr_1
eb_data_0
eb_data_1
eb_data_2
eb_data_3
eb_data_4
eb_data_5
eb_data_6
eb_data_7
eb_io_oen
eb_io_wen



Pulse Generator Circuits



BOARD AND TARGET POWER



Note:
Cypress STSOP-32 pin 1
is at pin 9, or A17

CUSTOMER NOTICE

LINEAR TECHNOLOGY HAS MADE A BEST EFFORT TO DESIGN A CIRCUIT THAT MEETS CUSTOMER-SUPPLIED SPECIFICATIONS; HOWEVER, IT REMAINS THE CUSTOMER'S RESPONSIBILITY TO VERIFY PROPER AND RELIABLE OPERATION IN THE ACTUAL APPLICATION. COMPONENT SUBSTITUTION AND PRINTED CIRCUIT BOARD LAYOUT MAY SIGNIFICANTLY AFFECT CIRCUIT PERFORMANCE OR RELIABILITY. CONTACT LINEAR TECHNOLOGY APPLICATIONS ENGINEERING FOR ASSISTANCE.

THIS CIRCUIT IS PROPRIETARY TO LINEAR TECHNOLOGY AND SUPPLIED FOR USE WITH LINEAR TECHNOLOGY PARTS.

APPROVALS

PCB DES.	AK
APP ENG.	JON M.

SCALE = NONE



1630 McCarthy Blvd.
Milpitas, CA 95035
Phone: (408)432-1900 www.linear.com
Fax: (408)434-0507
LTC Confidential-For Customer Use Only

TITLE: SCHEMATIC PCA SCH, ETERNA USB MANAGER WITH CASTELLATED MODULE DRAGON	
SIZE N/A	IC NO. 710-0235-0004 DEMO CIRCUIT 2274A
DATE: Thursday, September 03, 2015	REV. 1

SHEET 4 OF 4