


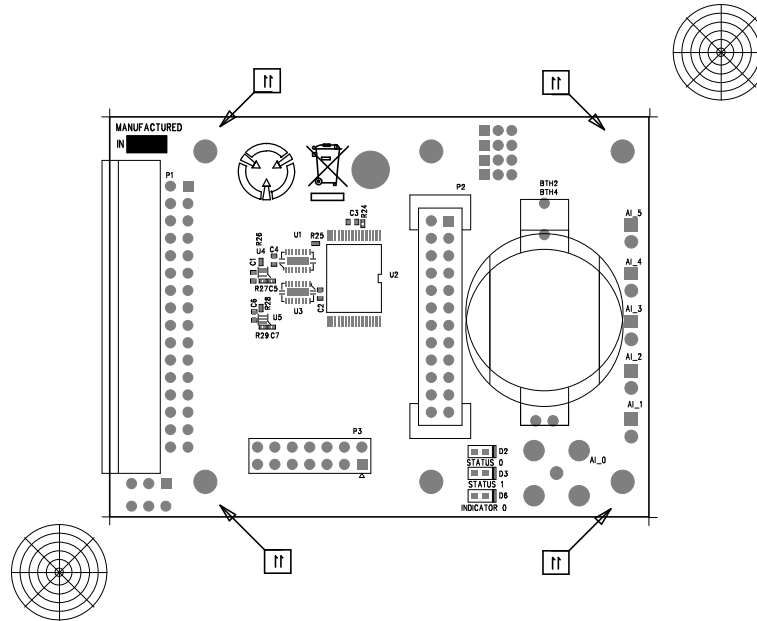
LINEAR TECHNOLOGY, MILPITAS CA 95035 408-432-1900		
COMPANY: DUST NETWORKS	DATE: 04-04-13	P/N: 600-0216-0001
TITLE: CAMANCHE		
LAYER: SILKSCREEN, TOP SIDE	A/W: 610-0216-0001	REV: 1

R E V I S I O N S				
ECO	REV	DESCRIPTION	DATE	APPROVED
1212	1	INITIAL RELEASE		
1284	2	DEFAULT STAND-OFF LOCATION		


NOTES (UNLESS OTHERWISE SPECIFIED):

1. ASSEMBLE AND INSPECT IN ACCORDANCE WITH IPC STANDARD IPC-H-610D CLASS 2.
2. MAXIMUM PROTRUSION OF THE MOUSE BITES IS +0.010".
3. FINISHED ASSEMBLY TO BE FREE OF ALL SOLDER FLUX RESIDUES.
4. FINISHED ASSEMBLY TO BE SHIPPED IN APPROVED ANTI-STATIC PACKAGING.
5. ALL PROCEEDURES REQUIRE ROHS-6. NO CLEAN SOLDER.
6. INSTALL RF SHIELD ON THE TOP SIDE BY INSERTING PINS INTO THE CORRECT MOUNTING HOLE POSITIONS.
 - a) SOLDER ALL FOUR CORNERS ON THE TOP SIDE.
 - b) CLEAN ALL FLUX RESIDUE FROM SOLDERED AREAS.
7. PLACE LABEL ON TOP OF THE SHIELD. FORMAT:
 - a) DUST PART NUMBER/REV.
 - b) U1 LOT NUMBER.
 - c) DATE OF MANUFACTURE (WW-YY).
8. REMOVE "KEY" PIN (BOTTOM) AND TAIL (TOP) CONNECTOR P1
9. SHORTEN "PGOOD" PIN (BOTTOM) AT CONNECTOR P1 BY 2MM MAX (+0, -0.5)
10. PLACE ISOLATION SHRINK TUBING ON "V+" TAILS AT CONNECTOR P1
11. DEFAULT STAND-OFF LOCATIONS AT FOUR CORNER HOLES ON BOTTOM
(AS REQUIRED BY HIGHER LEVEL ASSY)

APPROVALS		 LINEAR TECHNOLOGY 1630 MCCARTHY BLVD MILPITAS, CA. 95035 PH: (408) 432-1900 www.linear.com LTC CONFIDENTIAL- FOR CUSTOMER USE ONLY		
PCB DES.	AK			
APP ENG.	CHRISTOPHE N			
		TITLE: TOP ASSEMBLY DRAWING ETERNA EVAL/DEV MODULE, CAMANCHE		
		SIZE	IC NO.	REV.
		N/A	705-0216-0001	2
SCALE = NONE		FILENAME: 610-0216-1.PCB		SHT 1 OF 2



LAYER: SILKSCREEN, BOT SIDE		TITLE: CAMANCHE	
A\W: 610-0216-0001		REV: 1	
DATE: 04-04-13		P\N: 600-0216-0001	
COMPANY: DUST NETWORKS		LINEAR TECHNOLOGY, MILPITAS CA 95035 408-432-1900	

APPROVALS		 <div> 1630 MCCARTHY BLVD MILPITAS, CA 95035 PH: (408)432-1900 www.linear.com LTC CONFIDENTIAL- FOR CUSTOMER USE ONLY </div>	
PCB DES.	AK		
APP ENG.	CHRISTOPHE N	TITLE: TOP ASSEMBLY DRAWING ETERNA EVAL/DEV MODULE, CAMANCHE	
		SIZE	IC NO.
		N/A	705-0216-0001
SCALE = NONE		FILENAME: 610-0216-1.PCB	REV. 2
		SHT 2 OF 2	