

MASTER SCH, MOTHERBOARD, CAMANCHE

Content:

- 1. Title Page
- 2. Eterna
- 3. Memory
- 4. Connectors, LED & Power

Notes:

1. Associated Documents



2. Assembly Options

- 1. External Memory or not
- 2. Russian or Canadian or uModule Oski based
- 3. PA\_EXT\_SET R value

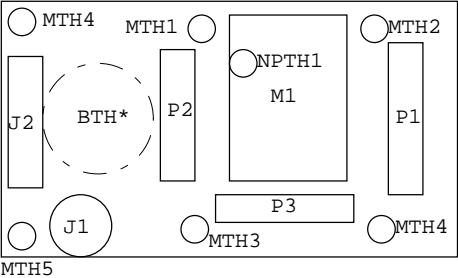
3. Layout notes


- 1. Same stack up as Fraser (600-0185)
- 2. Same relative positions as Fraser right and bottom edges for:
  - a. MTH1-4
  - b. P1-3
- 3. Extend left and top edges AR
- 4. Place memory components under M1
- 5. Use Russian (LTP5901) footprint for M1, but also include 5.5mm NPTH1 from Canadian (LTP5902)
- 6. Overlay battery holders (BTH\*) on bottom

Revision History:

Rev	Description	ECO	Author
01	Initial release	1212	Ric Peregrino

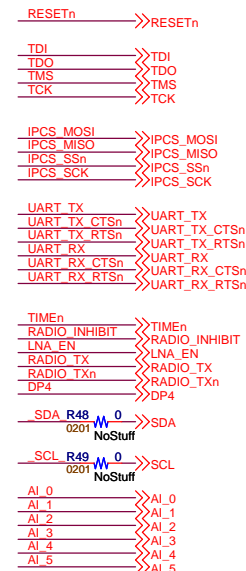
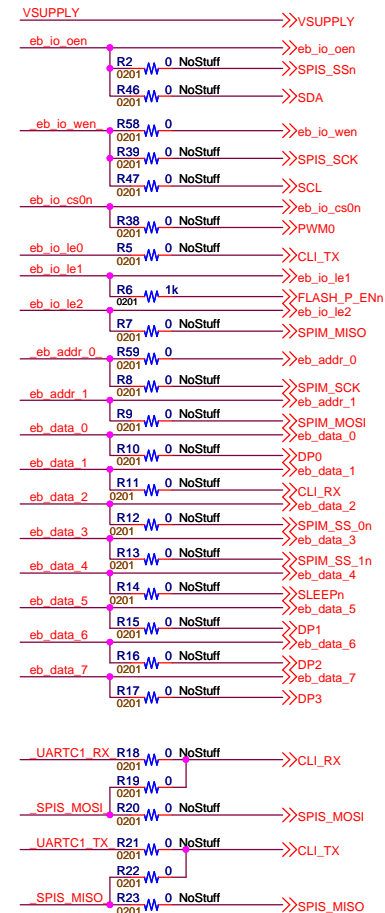
Parts placement, not to scale



LTC CONFIDENTIAL - FOR CUSTOMER USE ONLY		CONTRACT NO.		 <b>A Linear Technology Company</b> 1630 McCarthy Blvd. Milpitas, CA 95035 Phone: (408)432-1900 Fax: (408)434-0507		
<b>CUSTOMER NOTICE</b>  LINEAR TECHNOLOGY HAS MADE A BEST EFFORT TO DESIGN A CIRCUIT THAT MEETS CUSTOMER-SUPPLIED SPECIFICATIONS; HOWEVER, IT REMAINS THE CUSTOMER'S RESPONSIBILITY TO VERIFY PROPER AND RELIABLE OPERATION IN THE ACTUAL APPLICATION. COMPONENT SUBSTITUTION AND PRINTED CIRCUIT BOARD LAYOUT MAY SIGNIFICANTLY AFFECT CIRCUIT PERFORMANCE OR RELIABILITY. CONTACT LINEAR TECHNOLOGY APPLICATIONS ENGINEERING FOR ASSISTANCE.		APPROVALS				
		DRAWN:				
		CHECKED:				
		APPROVED:				
THIS CIRCUIT IS PROPRIETARY TO LINEAR TECHNOLOGY AND IS SUPPLIED FOR USE WITH LINEAR TECHNOLOGY PARTS.		ENGINEER:		<b>TITLE: DC9018A</b> <b>MASTER SCH, MOTHERBOARD, CAMANCHE</b>		
		DESIGNER:				
		SIZE B	DWG NO. 605-0216-0001			REV 01
		DATE: Wednesday, March 13, 2013				SHEET 1 OF 4

clearance of  
connector on M1

clearance of  
connector on M1



## CUSTOMER NOTICE

LINEAR TECHNOLOGY HAS MADE A BEST EFFORT TO DESIGN A CIRCUIT THAT MEETS CUSTOMER-SUPPLIED SPECIFICATIONS; HOWEVER, IT REMAINS THE CUSTOMER'S RESPONSIBILITY TO VERIFY PROPER AND RELIABLE OPERATION IN THE ACTUAL APPLICATION. COMPONENT SUBSTITUTION AND PRINTED CIRCUIT BOARD LAYOUT MAY SIGNIFICANTLY AFFECT CIRCUIT PERFORMANCE OR RELIABILITY. CONTACT LINEAR TECHNOLOGY APPLICATIONS ENGINEERING FOR ASSISTANCE.

THIS CIRCUIT IS PROPRIETARY TO LINEAR TECHNOLOGY AND  
IS SUPPLIED FOR USE WITH LINEAR TECHNOLOGY PARTS.

**CONTRACT NO.**

### APPROVALS

DATE:	DRAWN:
-------	--------

**CHECKED:**

**APPROVED:**

ENGINEER-

E.	DESIGNER-
----	-----------



dust  
networks™

**A Linear Technology Company**

**1630 McCarthy Blvd. Phone: (408)432-1900**  
**Milpitas, CA 95035 Fax: (408)434-0507**

TITLE:	<b>DC9018A</b>
	<b>MASTER SCH, MOTHERBOARD, CAMANCHE</b>

SIZE B	DWG NO. 605-0216-0001
-----------	--------------------------

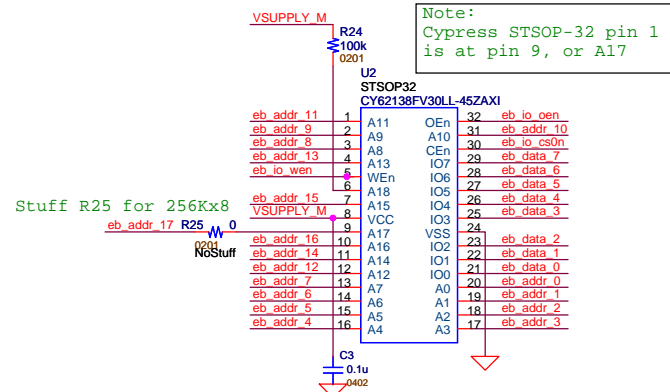
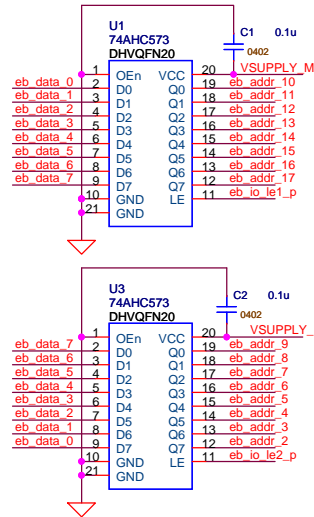
DATE: Wednesday, April 03, 2013

REV
01

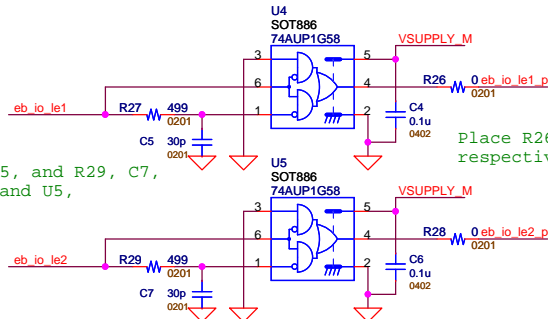
25 mil traces for VSUPPLY\_M

VSUPPLY\_M << VSUPPLY\_M

eb\_io\_cs0n << eb\_io\_cs0n  
 eb\_io\_le1 << eb\_io\_le1  
 eb\_io\_le2 << eb\_io\_le2  
 eb\_addr\_0 << eb\_addr\_0  
 eb\_addr\_1 << eb\_addr\_1  
 eb\_addr\_2 << eb\_addr\_2  
 eb\_addr\_3 << eb\_addr\_3  
 eb\_addr\_4 << eb\_addr\_4  
 eb\_addr\_5 << eb\_addr\_5  
 eb\_addr\_6 << eb\_addr\_6  
 eb\_addr\_7 << eb\_addr\_7  
 eb\_io\_oen << eb\_io\_oen  
 eb\_io\_wen << eb\_io\_wen




Pulse Generator Circuits



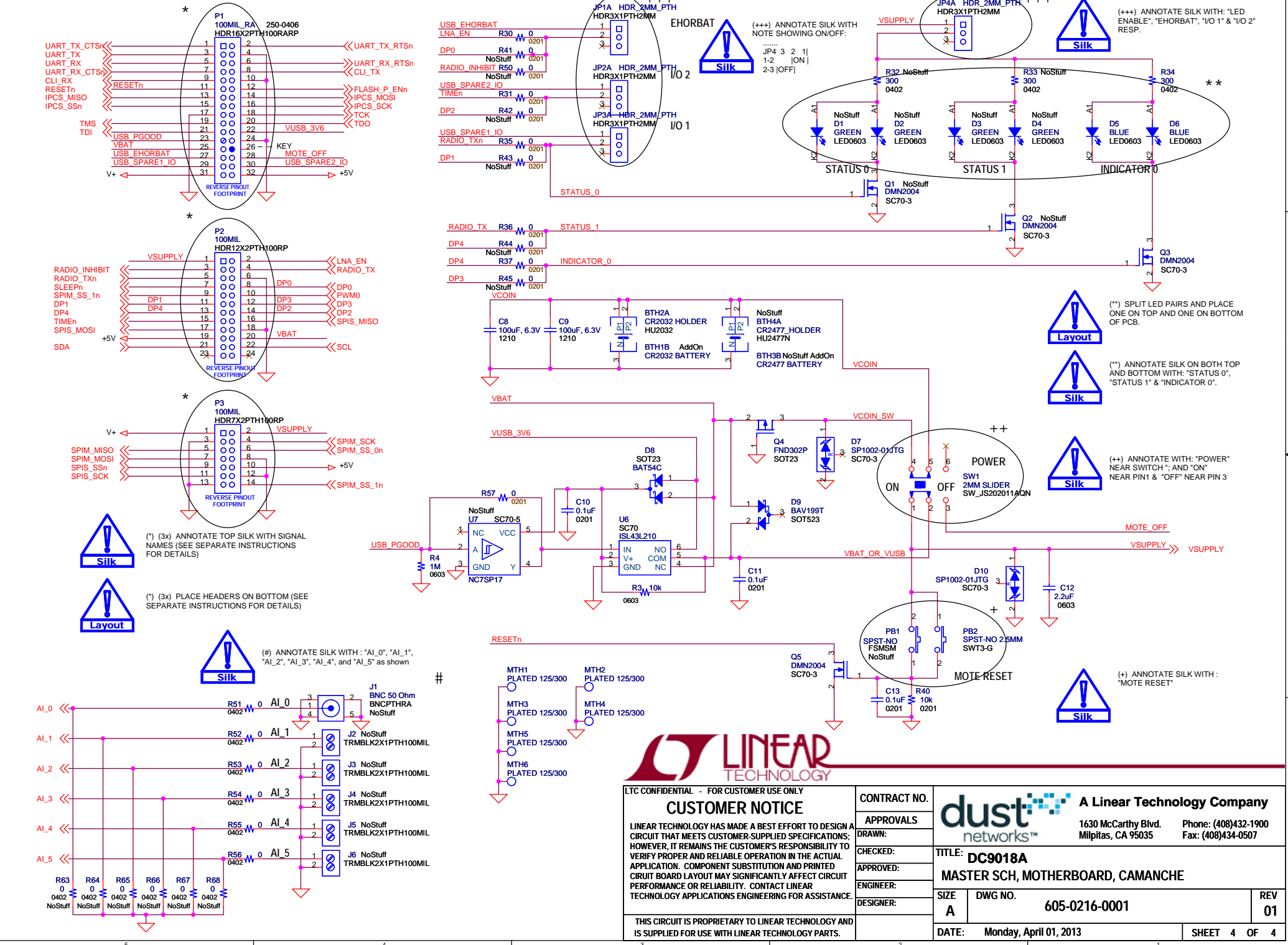
Place R27, C5, and R29, C7,  
close to U4 and U5,  
respectively

Place R26 and R28 close to U4 and U5,  
respectively



LTC CONFIDENTIAL - FOR CUSTOMER USE ONLY		CONTRACT NO.		<div>A Linear Technology Company</div> <div>1630 McCarthy Blvd. Phone: (408)432-1900 Milpitas, CA 95035 Fax: (408)434-0507</div>	
<div>CUSTOMER NOTICE</div> <div>LINEAR TECHNOLOGY HAS MADE A BEST EFFORT TO DESIGN A CIRCUIT THAT MEETS CUSTOMER-SUPPLIED SPECIFICATIONS; HOWEVER, IT REMAINS THE CUSTOMER'S RESPONSIBILITY TO VERIFY PROPER AND RELIABLE OPERATION IN THE ACTUAL APPLICATION. COMPONENT SUBSTITUTION AND PRINTED CIRCUIT BOARD LAYOUT MAY SIGNIFICANTLY AFFECT CIRCUIT PERFORMANCE OR RELIABILITY. CONTACT LINEAR TECHNOLOGY APPLICATIONS ENGINEERING FOR ASSISTANCE.</div>		APPROVALS			
		DRAWN:			
		CHECKED:			
THIS CIRCUIT IS PROPRIETARY TO LINEAR TECHNOLOGY AND IS SUPPLIED FOR USE WITH LINEAR TECHNOLOGY PARTS.		APPROVED:		<div>TITLE: DC9018A</div> <div>MASTER SCH, MOTHERBOARD, CAMANCHE</div> <div><div>SIZE B</div><div>DWG NO. 605-0216-0001</div><div>DATE: Thursday, March 07, 2013</div></div> <div><div>REV 01</div><div>SHEET 3 OF 4</div></div>	
		ENGINEER:			
		DESIGNER:			

CONNECTORS, VISUAL INDICATORS, POWER



**LINEAR TECHNOLOGY**

LTC CONFIDENTIAL - FOR CUSTOMER USE ONLY

**CUSTOMER NOTICE**

LINEAR TECHNOLOGY HAS MADE A BEST EFFORT TO DESIGN A CIRCUIT THAT MEETS CUSTOMER-SUPPLIED SPECIFICATIONS; HOWEVER, IT REMAINS THE CUSTOMER'S RESPONSIBILITY TO VERIFY PROPER AND RELIABLE OPERATION IN THE ACTUAL APPLICATION. COMPONENT SUBSTITUTION AND PRINTED CIRCUIT BOARD LAYOUT MAY SIGNIFICANTLY AFFECT CIRCUIT PERFORMANCE OR RELIABILITY. CONTACT LINEAR TECHNOLOGY APPLICATIONS ENGINEERING FOR ASSISTANCE.

THIS CIRCUIT IS PROPRIETARY TO LINEAR TECHNOLOGY AND IS SUPPLIED FOR USE WITH LINEAR TECHNOLOGY PARTS.

CONTRACT NO.

APPROVALS

DRAWN:

CHECKED:

APPROVED:

ENGINEER:

DESIGNER:

**dust networks**

**A Linear Technology Company**

1630 McCarthy Blvd.  
Milpitas, CA 95035

Phone: (408)432-1900  
Fax: (408)434-0507

TITLE: **DC9018A**

MASTER SCH, MOTHERBOARD, CAMANCHE

SIZE **A** DWG NO. **605-0216-0001**

DATE: **Monday, April 01, 2013**

REV **01**

SHEET **4** OF **4**