

RADIATION TEST REPORT

PRODUCT:	REF10ALQMLL
GAMMA:	0, 50k, 75k, 100k/TM1019 Condition D
GAMMA SOURCE:	Co60
DOSE RATE:	7.3 mRad/s
FACILITIES:	University of Massachusetts @ Lowell
TESTED:	2010

The RADTESTSM DATA SERVICE is a compilation of radiation test results on Analog Devices' Space grade products. It is designed to assist customers in selecting the right product for applications where radiation is a consideration. Many products manufactured by Analog Devices, Inc. have been shown to be radiation tolerant to most tactical radiation environments. Analog Devices, Inc. does not make any claim to maintain or guarantee these levels of radiation tolerance without lot qualification test.

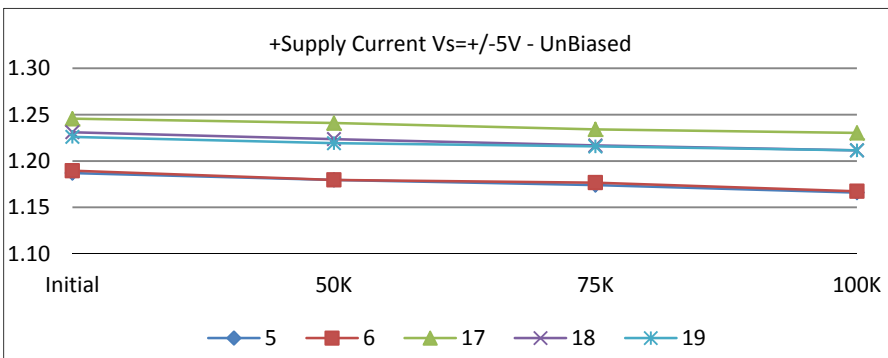
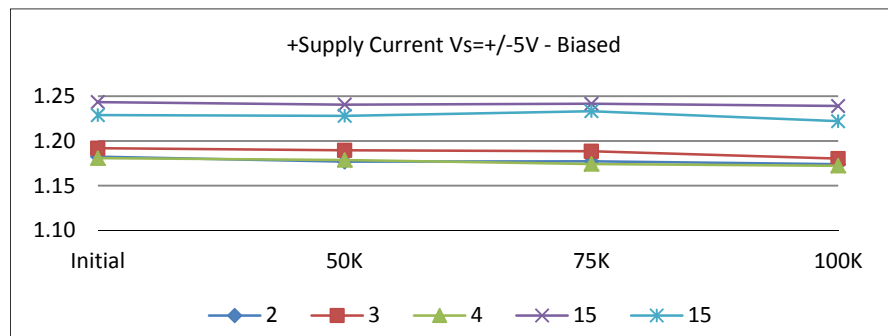
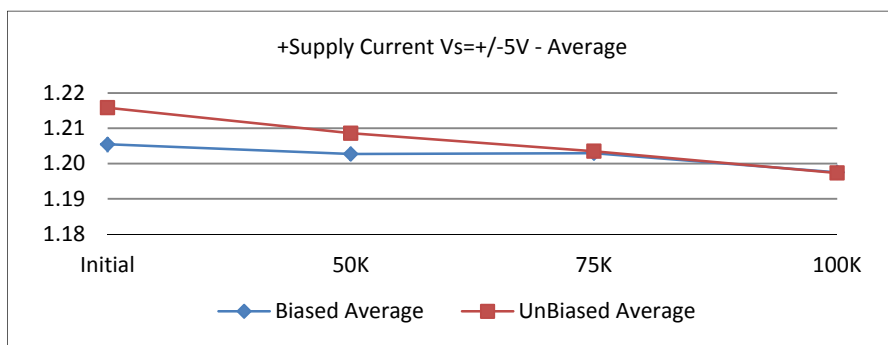
It is the responsibility of the Procuring Activity to screen products from Analog Devices, Inc. for compliance to Nuclear Hardness Critical Items (HCI) specifications.

WARNING:

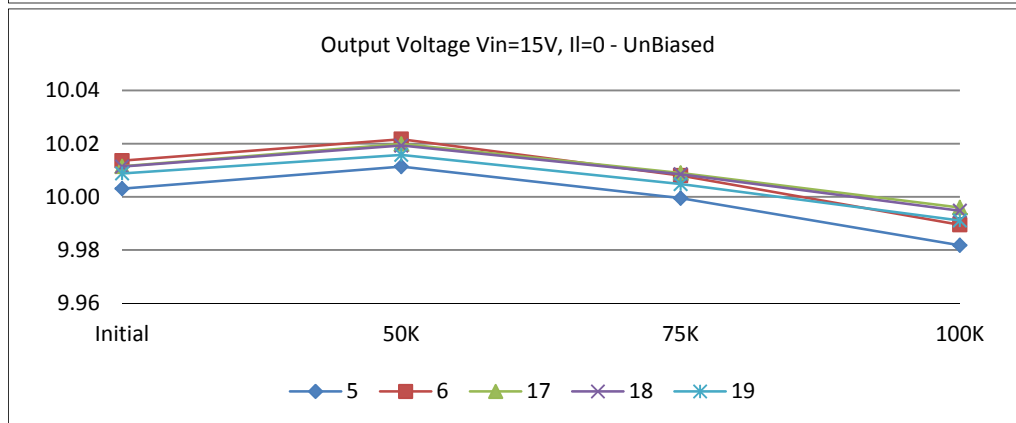
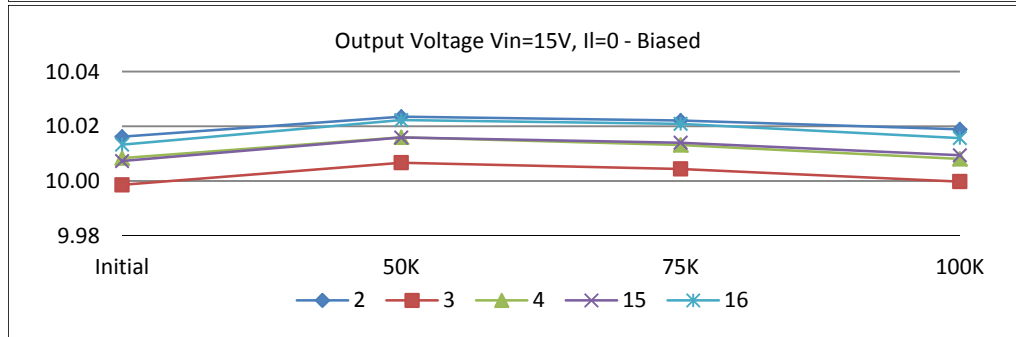
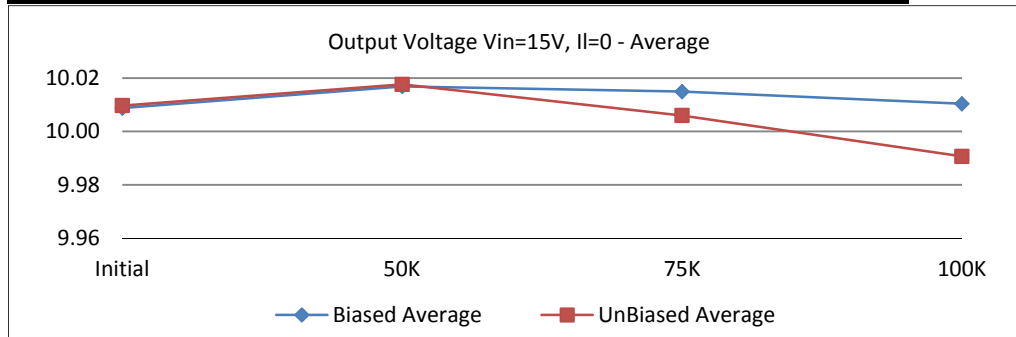
Analog Devices, Inc. does not recommend use of this data to qualify other product grades or process levels. Analog Devices, Inc. is not responsible and has no liability for any consequences, and all applicable Warranties are null and void if any Analog product is modified in any way or used outside of normal environmental and operating conditions, including the parameters specified in the corresponding data sheet. Analog Devices, Inc. does not guarantee that wafer manufacturing is the same for all process levels.



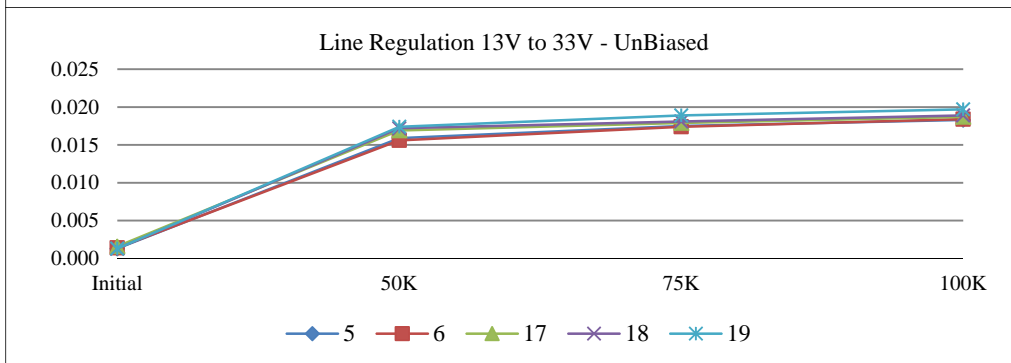
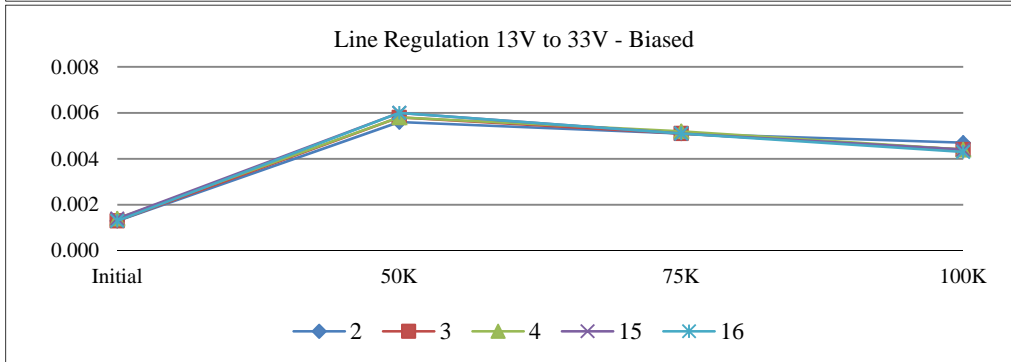
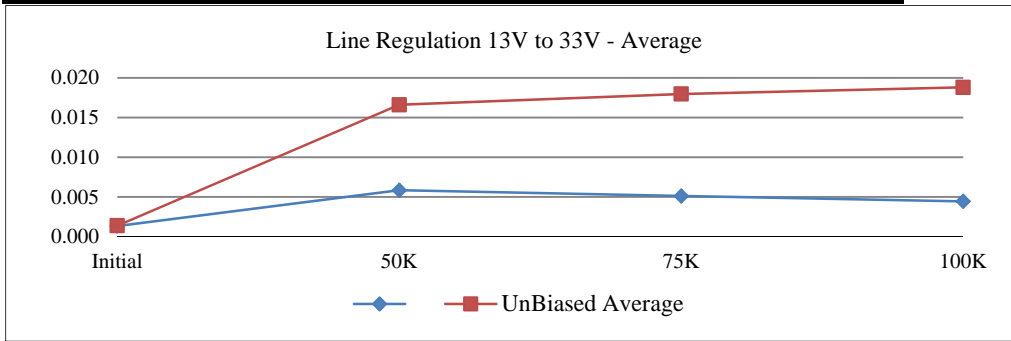
	T# 1	IQ+ @ VS=+-5V				mA
	SN	Initial	50K	75K	100K	Limit
Control	8	1.1933	1.1891	1.1952	1.1901	<1.4
	21	1.2258	1.2188	1.2197	1.2209	
Biased	2	1.1824	1.1768	1.1772	1.1739	
	3	1.1918	1.1895	1.1884	1.1802	
	4	1.1807	1.1786	1.1742	1.1722	
	15	1.2435	1.2406	1.2416	1.2391	
	16	1.2289	1.2281	1.2333	1.2221	
	Min	1.1807	1.1768	1.1742	1.1722	
	Max	1.2435	1.2406	1.2416	1.2391	
	Average	1.2055	1.2027	1.2029	1.1975	
UnBiased	5	1.1870	1.1796	1.1741	1.1660	
	6	1.1895	1.1796	1.1767	1.1674	
	17	1.2456	1.2409	1.2341	1.2303	
	18	1.2310	1.2236	1.2168	1.2115	
	19	1.2260	1.2192	1.2157	1.2114	
	Min	1.1870	1.1796	1.1741	1.1660	
	Max	1.2456	1.2409	1.2341	1.2303	
	Average	1.2158	1.2086	1.2035	1.1973	



	T#2	VOUT @ Vin=15V,IL=0				V
	SN	Initial	50K	75K	100K	Limit
Control	8	10.0193	10.0193	10.0189	10.0191	>9.94
	21	10.0095	10.0093	10.0091	10.0089	<10.06
Biased	2	10.0162	10.0235	10.0221	10.0189	
	3	9.9986	10.0067	10.0044	9.9998	
	4	10.0084	10.0160	10.0132	10.0081	
	15	10.0073	10.0159	10.0140	10.0094	
	16	10.0133	10.0223	10.0209	10.0157	
	Min	9.9986	10.0067	10.0044	9.9998	
Max	10.0162	10.0235	10.0221	10.0189		
Average	10.0088	10.0169	10.0149	10.0104		
UnBiased	5	10.0031	10.0114	9.9995	9.9818	
	6	10.0136	10.0217	10.0080	9.9895	
	17	10.0115	10.0199	10.0090	9.9960	
	18	10.0114	10.0193	10.0085	9.9948	
	19	10.0088	10.0158	10.0048	9.9911	
	Min	10.0031	10.0114	9.9995	9.9818	
	Max	10.0136	10.0217	10.0090	9.9960	
Average	10.0097	10.0176	10.0060	9.9906		



T#3		LINE REG 13V TO 33V				mV
SN		Initial	50K	75K	100K	25°C
Control	8	0.0013	0.0014	0.0013	0.0014	Limit
	21	0.0014	0.0014	0.0013	0.0014	<0.03
Biased	2	0.0013	0.0056	0.0051	0.0047	
	3	0.0013	0.0058	0.0051	0.0044	
	4	0.0014	0.0058	0.0052	0.0044	
	15	0.0014	0.0060	0.0051	0.0044	
	16	0.0013	0.0060	0.0051	0.0043	
	Min	0.0013	0.0056	0.0051	0.0043	
	Max	0.0014	0.0060	0.0052	0.0047	
Average	0.0013	0.0058	0.0051	0.0044		
UnBiased	5	0.0013	0.0159	0.0175	0.0183	
	6	0.0014	0.0156	0.0174	0.0184	
	17	0.0016	0.0169	0.0179	0.0187	
	18	0.0013	0.0172	0.0181	0.0189	
	19	0.0013	0.0174	0.0189	0.0197	
	Min	0.0013	0.0156	0.0174	0.0183	
	Max	0.0016	0.0174	0.0189	0.0197	
Average	0.0014	0.0166	0.0180	0.0188		



	T#4	LOAD REG 0 TO 10mA				uA
	SN	Initial	50K	75K	100K	25°C
Control	8	0.0011	0.0011	0.0012	0.0012	Limit
	21	0.0010	0.0010	0.0010	0.0009	<0.015
Biased	2	0.0012	0.0014	0.0013	0.0015	
	3	0.0009	0.0011	0.0012	0.0013	
	4	0.0010	0.0011	0.0014	0.0011	
	15	0.0010	0.0011	0.0013	0.0011	
	16	0.0009	0.0013	0.0009	0.0013	
	Min	0.0009	0.0011	0.0009	0.0011	
	Max	0.0012	0.0014	0.0014	0.0015	
	Average	0.0010	0.0012	0.0012	0.0013	
	UnBiased	5	0.0010	0.0015	0.0015	0.0014
6		0.0011	0.0015	0.0016	0.0016	
17		0.0011	0.0017	0.0017	0.0017	
18		0.0010	0.0014	0.0012	0.0016	
19		0.0011	0.0014	0.0013	0.0015	
Min		0.0010	0.0014	0.0012	0.0014	
Max		0.0011	0.0017	0.0017	0.0017	
Average		0.0011	0.0015	0.0015	0.0016	

