



TID Report
09-528 111206 R1.1

Aeroflex RAD
5017 N. 30th Street
Colorado Springs, CO 80919
(719) 531-0800

***Radiation Lot Acceptance Testing (RLAT) of the RH1021CMW-10 Precision
10V Reference for Linear Technology***

Customer: Linear Technology, PO# 54546L

RAD Job Number: 09-528

Part Type Tested: RH1021CMW-10 Precision 10V Reference.

Traceability Information: Fab Lot Number: WP002452.1, Wafer Number: 2, Assembly Lot Number: 490015.2, Date Code: 0907A. See photograph of unit under test in Appendix A.

Quantity of Units: 12 units received, 5 units for biased irradiation, 5 units for unbiased irradiation and 2 units for control. Serial numbers 134-138 were biased during irradiation, serial numbers 139-143 were unbiased during irradiation and serial numbers 144 and 145 were used as control. See Appendix B for the radiation bias connection table.

Radiation and Electrical Test Increments: 50 to 300rad(Si)/s ionizing radiation with electrical test increments: pre-irradiation, 20krad(Si), 50krad(Si), 100krad(Si) and 200krad(Si).

Pre-Irradiation Burn-In: Burn-In performed by Linear Technology prior to receipt by RAD

Overtest and Post-Irradiation Anneal: No overtest. No anneal.

Radiation Test Standard: MIL-STD-750E TM1019 and/or MIL-STD-883H TM1019 Condition A.

Test Hardware and Software: LTS2020 Automated Tester, LTS2101 Family Board, 0600 Fixture and BGSS-030309B DUT Board.

Facility and Radiation Source: Aeroflex RAD's Longmire Laboratories, Colorado Springs, CO. Gamma rays provided by JLSA 81-24 Co60 source. Dosimetry performed by CaF₂ TLDS traceable to NIST. Aeroflex RAD's dosimetry has been audited by DSCC and Aeroflex RAD has been awarded Laboratory Suitability for MIL-STD-750 and MIL-STD-883 TM 1019.

Irradiation and Test Temperature: Room temperature controlled to 24°C±6°C per MIL-STD-883 and MIL-STD-750.

RLAT Result: PASSED. The units-under-test passed to the maximum tested dose level of 200krad(Si) with all measured parameters remaining within their datasheet specification.

An ISO 9001:2008 and DSCC Certified Company



1.0. Overview and Background

It is well known that total dose ionizing radiation can cause parametric degradation and ultimately functional failure in electronic devices. The damage occurs via electron-hole pair production, transport and trapping in the dielectric and interface regions. In discrete devices the bulk of the damage is frequently manifested as a reduction in the gain and/or breakdown voltage of the device. The damage will usually anneal with time following the end of the radiation exposure. Due to this annealing, and to ensure a worst-case test condition MIL-STD-883 TM1019.8 calls out a dose rate of 50 to 300rad(Si)/s as Condition A and further specifies that the time from the end of an incremental radiation exposure and electrical testing shall be 1-hour or less and the total time from the end of one incremental irradiation to the beginning of the next incremental radiation step should be 2-hours or less. The work described in this report was performed to meet MIL-STD-883 TM1019.8 Condition A.

2.0. Radiation Test Apparatus

The total ionizing dose testing described in this final report was performed using the facilities at Aeroflex RAD's Longmire Laboratories in Colorado Springs, CO. The high dose rate total ionizing dose (TID) source is a JLSA 81-24 irradiator modified to provide a panoramic exposure. The Co-60 rods are held in the base of the irradiator heavily shielded by lead. During the radiation exposures the rod is raised by an electronic timer/controller and the exposure is performed in air. The dose rate for this irradiator in this configuration ranges from <1rad(Si)/s to a maximum of approximately 120rad(Si)/s, determined by the distance from the source. For high-dose rate experiments the bias boards are placed in a radial fashion equidistant from the raised Co-60 rods with the distance adjusted to provide the required dose rate. The irradiator calibration is maintained by Radiation Assured Devices Longmire Laboratories using thermoluminescent dosimeters (TLDs) traceable to the National Institute of Standards and Technology (NIST). Figure 2.1 shows a photograph of the JLSA 81-24 Co-60 irradiator at Aeroflex RAD's Longmire Laboratory facility.

Aeroflex RAD is currently certified by the Defense Supply Center Columbus (DSCC) for Laboratory Suitability under MIL STD 750 and MIL-STD-883. Additional details regarding Aeroflex RAD dosimetry for TM1019 Condition A testing are available in Aeroflex RAD's report to DSCC entitled: "Dose Rate Mapping of the J.L. Shepherd and Associates Model 81 Irradiator Installed by Radiation Assured Devices".



Figure 2.1. Aeroflex RAD's high dose rate Co-60 irradiator. The dose rate is obtained by positioning the device-under-test at a fixed distance from the gamma cell. The dose rate for this irradiator varies from approximately 120rad(Si)/s close to the rods down to 1rad(Si)/s at a distance of approximately 2-feet.



3.0. Radiation Test Conditions

The RH1021CMW-10 Precision 10V Reference described in this final report were irradiated using a split 15V supply and with all pins tied to ground, that is biased and unbiased. See the TID Bias Table in Appendix B for the full bias circuits. In our opinion, this bias circuit satisfies the requirements of MIL-STD-883H TM1019.8 Section 3.9.3 Bias and Loading Conditions which states "The bias applied to the test devices shall be selected to produce the greatest radiation induced damage or the worst-case damage for the intended application, if known. While maximum voltage is often worst case some bipolar linear device parameters (e.g. input bias current or maximum output load current) exhibit more degradation with 0 V bias."

The devices were irradiated to a maximum total ionizing dose level of 200krad(Si) with incremental readings at 20krad(Si), 50krad(Si) and 100krad(Si). Electrical testing occurred within one hour following the end of each irradiation segment. For intermediate irradiations, the parts were tested and returned to total dose exposure within two hours from the end of the previous radiation increment.

The TID bias board was positioned in the Co-60 cell to provide the required minimum of 50rad(Si)/s and was located inside a lead-aluminum enclosure. The lead-aluminum enclosure is required under MIL-STD-883H TM1019.8 Section 3.4 that reads as follows: "Lead/Aluminum (Pb/Al) container. Test specimens shall be enclosed in a Pb/Al container to minimize dose enhancement effects caused by low-energy, scattered radiation. A minimum of 1.5 mm Pb, surrounding an inner shield of at least 0.7 mm Al, is required. This Pb/Al container produces an approximate charged particle equilibrium for Si and for TLDs such as CaF₂. The radiation field intensity shall be measured inside the Pb/Al container (1) initially, (2) when the source is changed, or (3) when the orientation or configuration of the source, container, or test-fixture is changed. This measurement shall be performed by placing a dosimeter (e.g., a TLD) in the device-irradiation container at the approximate test-device position. If it can be demonstrated that low energy scattered radiation is small enough that it will not cause dosimetry errors due to dose enhancement, the Pb/Al container may be omitted."

The final dose rate within the high dose rate lead-aluminum enclosure was determined based on TLD dosimetry measurements (see previous section). The final dose rate for this work was 56.0rad(Si)/s with a precision of $\pm 5\%$.



4.0. Tested Parameters

During the total ionizing dose characterization testing the following electrical parameters were measured pre- and post-irradiation:

1. Supply Current (A) @ $V_{IN}=15V$, $I_{OUT}=0$
2. Output Voltage (V) @ $V_{IN}=15V$, $I_{OUT}=0$
3. Line Regulation (ppm/V) @ $11.5V \leq V_{IN} \leq 14.5V$
4. Line Regulation (ppm/V) @ $14.5V < V_{IN} \leq 40V$
5. Sourcing Load Regulation (ppm/mA) @ $0 \leq I_{OUT} \leq 10mA$
6. Sinking Load Regulation (ppm/mA) @ $1.7 \leq I_{OUT} \leq 10mA$
7. Minimum Current (Shunt Mode) (A) @ V_{IN} is Open

Appendix C details the measured parameters, test conditions, pre-irradiation specification and measurement resolution for each of the measurements.

The parametric data was obtained as "read and record" and all the raw data plus an attributes summary are contained in this report as well as in a separate Excel file. The attributes data contains the average, standard deviation and the average with the KTL values applied. The KTL value used in this work is 2.742 per MIL-HDBK-814 using one sided tolerance limits of 90/90 and a 5-piece sample size. The 90/90 KTL values were selected to match the statistical levels specified in the MIL-PRF-38535 sampling plan for the qualification of a radiation hardness assured (RHA) component. Note that the following criteria must be met for a device to pass the total ionizing dose test: following the radiation exposure each of the 5 pieces irradiated under electrical bias shall pass the specification value. The units irradiated without electrical bias and the KTL statistics are included in this report for reference only. If any of the 5 pieces irradiated under electrical bias exceed the device post radiation data sheet specification limits, then the lot could be logged as a failure.



5.0. Total Ionizing Dose Test Results

Based on this criterion the RH1021CMW-10 Precision 10V Reference (from the lot traceability information provided on the first page of this test report) PASSED the total ionizing dose test to the maximum tested dose level of 200krad(Si) with all measured parameters remaining within their datasheet specifications.

Figures 5.1 through 5.7 show plots of all the measured parameters versus total ionizing dose while Tables 5.1 - 5.7 show the corresponding raw data for each of these parameters. In the data plots the solid diamonds are the average of the measured data points for the sample irradiated under electrical bias while the shaded diamonds are the average of the measured data points for the units irradiated with all pins tied to ground. The black lines (solid or dashed) are the average of the data points after application of the KTL statistics on the sample irradiated in the biased condition while the shaded lines (solid or dashed) are the average of the data points after application of the KTL statistics on the sample irradiated in the unbiased condition. The red dotted line(s) are the pre- and/or post-irradiation minimum and/or maximum specification value as defined in the datasheet and/or test plan.

The control units, as expected, show no significant changes to any of the parameters. Therefore we can conclude that the electrical testing remained in control throughout the duration of the tests and the observed degradation was due to the radiation exposure. Appendix D lists the figures used in this section to facilitate the location of a particular parameter.

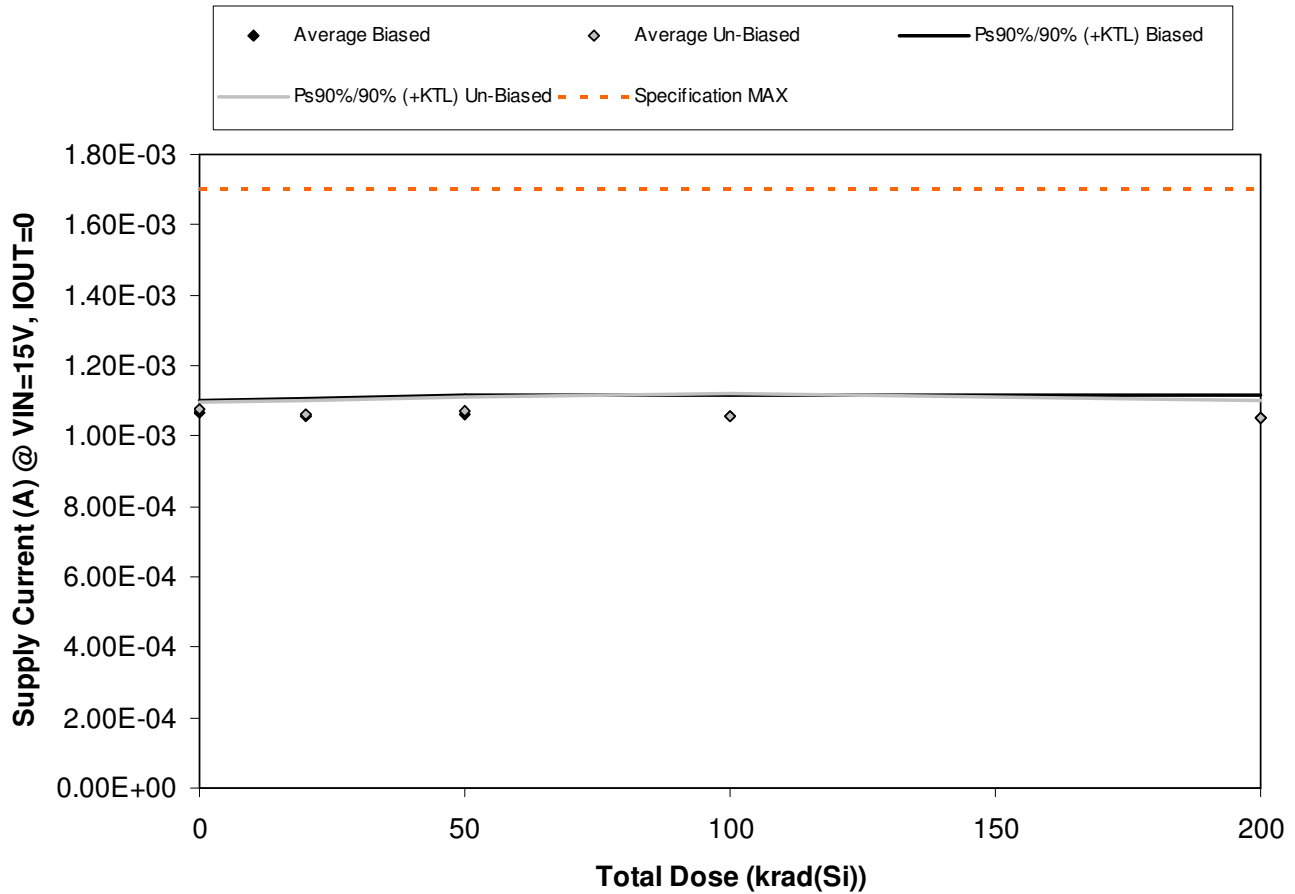


Figure 5.1. Plot of Supply Current (A) @ VIN=15V, IOU=0 versus total dose. The solid diamonds are the average of the measured data points for the samples irradiated under electrical bias while the shaded diamonds are the average of the measured data points for the samples irradiated with all pins tied to ground. The black lines (solid and/or dashed) are the average of the data points after application of the KTL statistics on the samples irradiated under electrical bias while the gray lines (solid and/or dashed) are the average of the data points after application of the KTL statistics on the samples irradiated in the unbiased condition. The red dotted line(s) are the pre- and/or post-irradiation minimum and/or maximum specification value as defined in the datasheet and/or test plan.



TID Report
09-528 111206 R1.1

Aeroflex RAD
5017 N. 30th Street
Colorado Springs, CO 80919
(719) 531-0800

Table 5.1. Raw data for Supply Current (A) @ VIN=15V, IOU=0 versus total dose, including the statistical analysis, specification and the status of the testing (pass/fail).

Supply Current (A) @ VIN=15V, IOU=0	Total Dose (krad(Si))				
	0	20	50	100	200
Device					
134	1.07E-03	1.08E-03	1.08E-03	1.08E-03	1.06E-03
135	1.06E-03	1.05E-03	1.05E-03	1.03E-03	1.05E-03
136	1.09E-03	1.08E-03	1.07E-03	1.08E-03	1.09E-03
137	1.07E-03	1.04E-03	1.07E-03	1.05E-03	1.03E-03
138	1.05E-03	1.05E-03	1.04E-03	1.05E-03	1.04E-03
139	1.07E-03	1.05E-03	1.06E-03	1.04E-03	1.04E-03
140	1.08E-03	1.08E-03	1.08E-03	1.09E-03	1.06E-03
141	1.08E-03	1.07E-03	1.07E-03	1.07E-03	1.08E-03
142	1.07E-03	1.04E-03	1.05E-03	1.04E-03	1.03E-03
143	1.09E-03	1.06E-03	1.09E-03	1.06E-03	1.05E-03
144	1.05E-03	1.06E-03	1.10E-03	1.07E-03	1.07E-03
145	1.06E-03	1.06E-03	1.05E-03	1.05E-03	1.07E-03
Biased Statistics					
Average Biased	1.07E-03	1.06E-03	1.06E-03	1.06E-03	1.05E-03
Std Dev Biased	1.21E-05	1.76E-05	1.90E-05	2.12E-05	2.37E-05
Ps90%/90% (+KTL) Biased	1.10E-03	1.11E-03	1.11E-03	1.11E-03	1.12E-03
Ps90%/90% (-KTL) Biased	1.03E-03	1.01E-03	1.01E-03	9.98E-04	9.86E-04
Un-Biased Statistics					
Average Un-Biased	1.08E-03	1.06E-03	1.07E-03	1.06E-03	1.05E-03
Std Dev Un-Biased	7.96E-06	1.46E-05	1.46E-05	2.28E-05	1.79E-05
Ps90%/90% (+KTL) Un-Biased	1.10E-03	1.10E-03	1.11E-03	1.12E-03	1.10E-03
Ps90%/90% (-KTL) Un-Biased	1.05E-03	1.02E-03	1.03E-03	9.95E-04	1.00E-03
Specification MAX	1.70E-03	1.70E-03	1.70E-03	1.70E-03	1.70E-03
Status	PASS	PASS	PASS	PASS	PASS

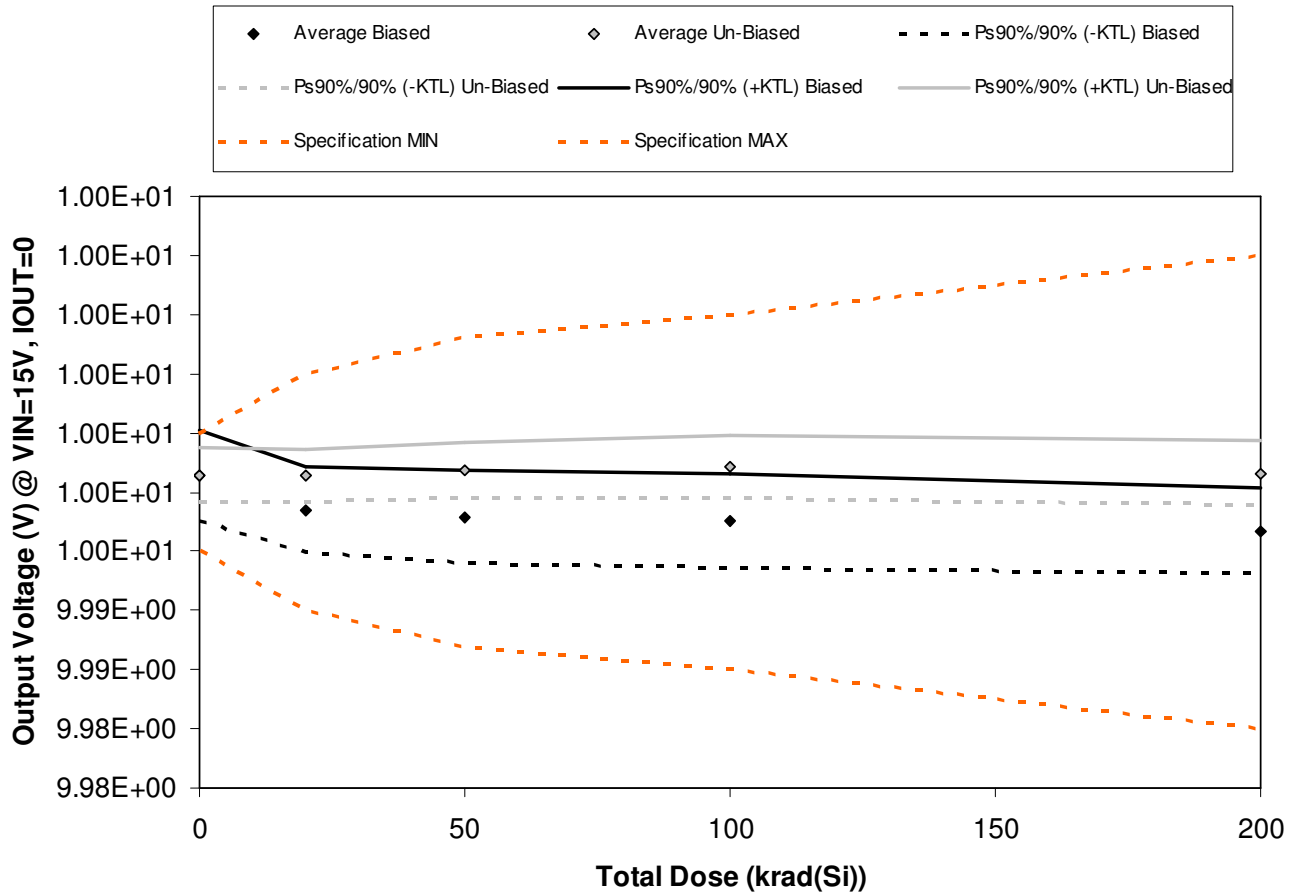


Figure 5.2. Plot of Output Voltage (V) @ VIN=15V, IOU=0 versus total dose. The solid diamonds are the average of the measured data points for the samples irradiated under electrical bias while the shaded diamonds are the average of the measured data points for the samples irradiated with all pins tied to ground. The black lines (solid and/or dashed) are the average of the data points after application of the KTL statistics on the samples irradiated under electrical bias while the gray lines (solid and/or dashed) are the average of the data points after application of the KTL statistics on the samples irradiated in the unbiased condition. The red dotted line(s) are the pre- and/or post-irradiation minimum and/or maximum specification value as defined in the datasheet and/or test plan.



**TID Report
09-528 111206 R1.1**

**Aeroflex RAD
5017 N. 30th Street
Colorado Springs, CO 80919
(719) 531-0800**

Table 5.2. Raw data for Output Voltage (V) @ VIN=15V, IOU=0 versus total dose, including the statistical analysis, specification and the status of the testing (pass/fail).

Output Voltage (V) @ VIN=15V, IOU=0	Total Dose (krad(Si))				
	Device	0	20	50	100
134	9.9997	9.9969	9.9962	9.9958	9.9951
135	10.0026	9.9997	9.9992	9.9989	9.9980
136	10.0018	9.9990	9.9985	9.9980	9.9971
137	10.0000	9.9973	9.9965	9.9963	9.9956
138	10.0026	9.9996	9.9990	9.9988	9.9979
139	10.0002	10.0003	10.0006	10.0009	10.0004
140	10.0011	10.0009	10.0012	10.0015	10.0008
141	10.0021	10.0021	10.0025	10.0030	10.0027
142	10.0022	10.0022	10.0026	10.0031	10.0025
143	10.0017	10.0017	10.0021	10.0024	10.0016
144	10.0021	10.0010	10.0009	10.0009	10.0002
145	9.9999	9.9987	9.9986	9.9987	9.9979
Biased Statistics					
Average Biased	1.00E+01	1.00E+01	1.00E+01	1.00E+01	1.00E+01
Std Dev Biased	1.40E-03	1.31E-03	1.42E-03	1.43E-03	1.33E-03
Ps90%/90% (+KTL) Biased	1.00E+01	1.00E+01	1.00E+01	1.00E+01	1.00E+01
Ps90%/90% (-KTL) Biased	1.00E+01	9.99E+00	9.99E+00	9.99E+00	9.99E+00
Un-Biased Statistics					
Average Un-Biased	1.00E+01	1.00E+01	1.00E+01	1.00E+01	1.00E+01
Std Dev Un-Biased	8.26E-04	8.17E-04	8.69E-04	9.58E-04	1.01E-03
Ps90%/90% (+KTL) Un-Biased	1.00E+01	1.00E+01	1.00E+01	1.00E+01	1.00E+01
Ps90%/90% (-KTL) Un-Biased	1.00E+01	1.00E+01	1.00E+01	1.00E+01	1.00E+01
Specification MIN	9.995E+00	9.990E+00	9.987E+00	9.985E+00	9.980E+00
Status	PASS	PASS	PASS	PASS	PASS
Specification MAX	1.0005E+01	1.0010E+01	1.0013E+01	1.0015E+01	1.0020E+01
Status	PASS	PASS	PASS	PASS	PASS

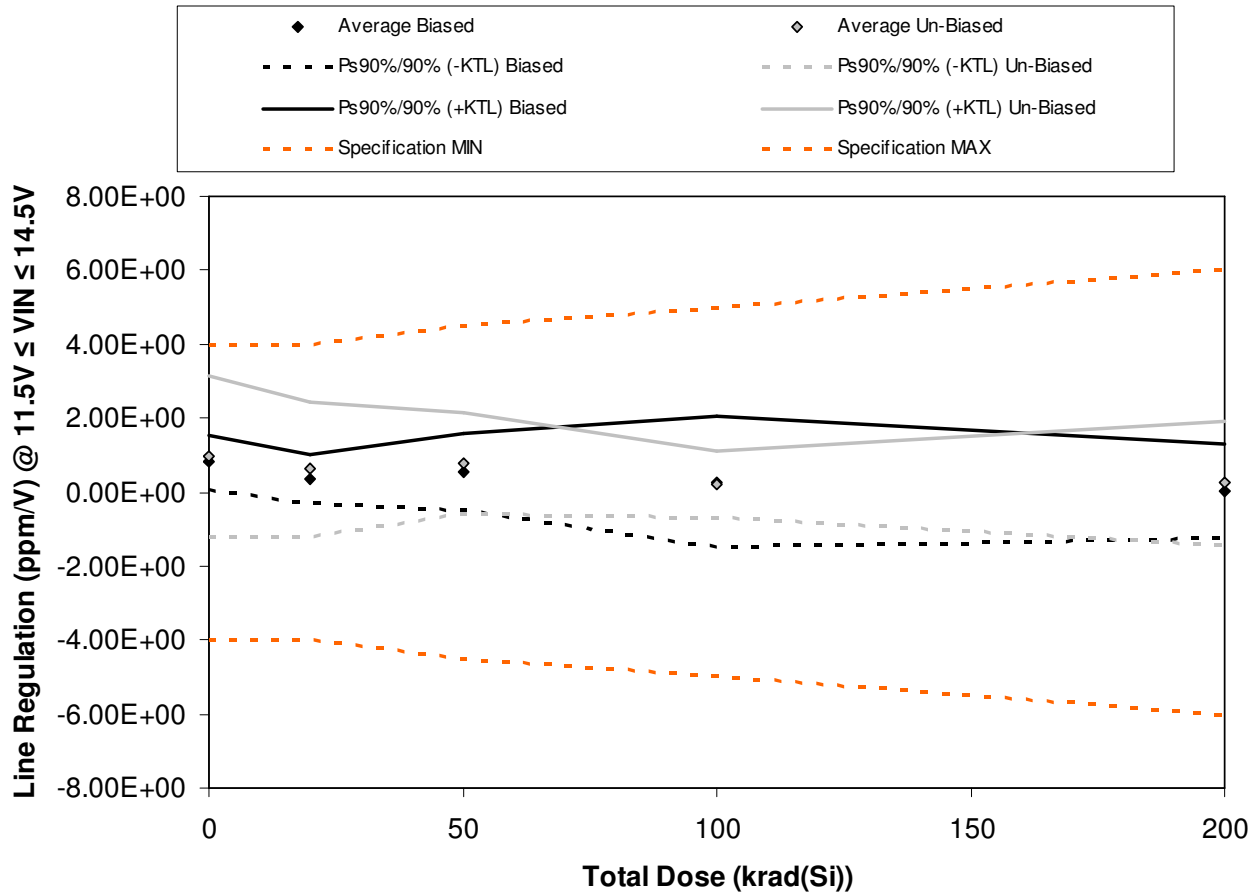


Figure 5.3. Plot of Line Regulation (ppm/V) @ $11.5V \leq V_{IN} \leq 14.5V$ versus total dose. The solid diamonds are the average of the measured data points for the samples irradiated under electrical bias while the shaded diamonds are the average of the measured data points for the samples irradiated with all pins tied to ground. The black lines (solid and/or dashed) are the average of the data points after application of the KTL statistics on the samples irradiated under electrical bias while the gray lines (solid and/or dashed) are the average of the data points after application of the KTL statistics on the samples irradiated in the unbiased condition. The red dotted line(s) are the pre- and/or post-irradiation minimum and/or maximum specification value as defined in the datasheet and/or test plan.



TID Report
09-528 111206 R1.1

Aeroflex RAD
5017 N. 30th Street
Colorado Springs, CO 80919
(719) 531-0800

Table 5.3. Raw data for Line Regulation (ppm/V) @ $11.5V \leq VIN \leq 14.5V$ versus total dose, including the statistical analysis, specification and the status of the testing (pass/fail).

Line Regulation (ppm/V) @ $11.5V \leq VIN \leq 14.5V$	Total Dose (krad(Si))				
	0	20	50	100	200
Device					
134	1.10E+00	6.90E-01	1.41E-01	2.20E-01	-2.10E-01
135	1.00E+00	4.40E-01	7.10E-01	-2.70E-01	8.00E-01
136	5.70E-01	4.00E-02	9.20E-01	5.70E-01	-4.00E-01
137	5.00E-01	4.10E-01	8.10E-01	1.24E+00	0.00E+00
138	9.10E-01	2.60E-01	1.40E-01	-3.50E-01	-1.60E-01
139	3.60E-01	2.10E-01	1.13E+00	3.20E-01	1.22E+00
140	1.99E+00	-3.40E-01	9.10E-01	5.90E-01	1.90E-01
141	1.10E-01	1.15E+00	8.50E-01	2.20E-01	5.00E-02
142	1.57E+00	1.16E+00	-1.00E-01	-3.10E-01	-4.60E-01
143	8.30E-01	9.00E-01	1.07E+00	1.40E-01	2.31E-01
144	8.10E-01	1.21E+00	6.60E-01	-3.00E-01	2.20E-01
145	1.50E+00	5.00E-02	1.20E+00	-1.70E-01	6.20E-01
Biased Statistics					
Average Biased	8.16E-01	3.68E-01	5.44E-01	2.82E-01	6.00E-03
Std Dev Biased	2.66E-01	2.40E-01	3.76E-01	6.54E-01	4.66E-01
Ps90%/90% (+KTL) Biased	1.55E+00	1.03E+00	1.58E+00	2.07E+00	1.28E+00
Ps90%/90% (-KTL) Biased	8.57E-02	-2.89E-01	-4.87E-01	-1.51E+00	-1.27E+00
Un-Biased Statistics					
Average Un-Biased	9.72E-01	6.16E-01	7.72E-01	1.92E-01	2.46E-01
Std Dev Un-Biased	7.96E-01	6.60E-01	5.01E-01	3.28E-01	6.10E-01
Ps90%/90% (+KTL) Un-Biased	3.15E+00	2.42E+00	2.14E+00	1.09E+00	1.92E+00
Ps90%/90% (-KTL) Un-Biased	-1.21E+00	-1.19E+00	-6.01E-01	-7.07E-01	-1.43E+00
Specification MIN	-4.00E+00	-4.00E+00	-4.50E+00	-5.00E+00	-6.00E+00
Status	PASS	PASS	PASS	PASS	PASS
Specification MAX	4.00E+00	4.00E+00	4.50E+00	5.00E+00	6.00E+00
Status	PASS	PASS	PASS	PASS	PASS

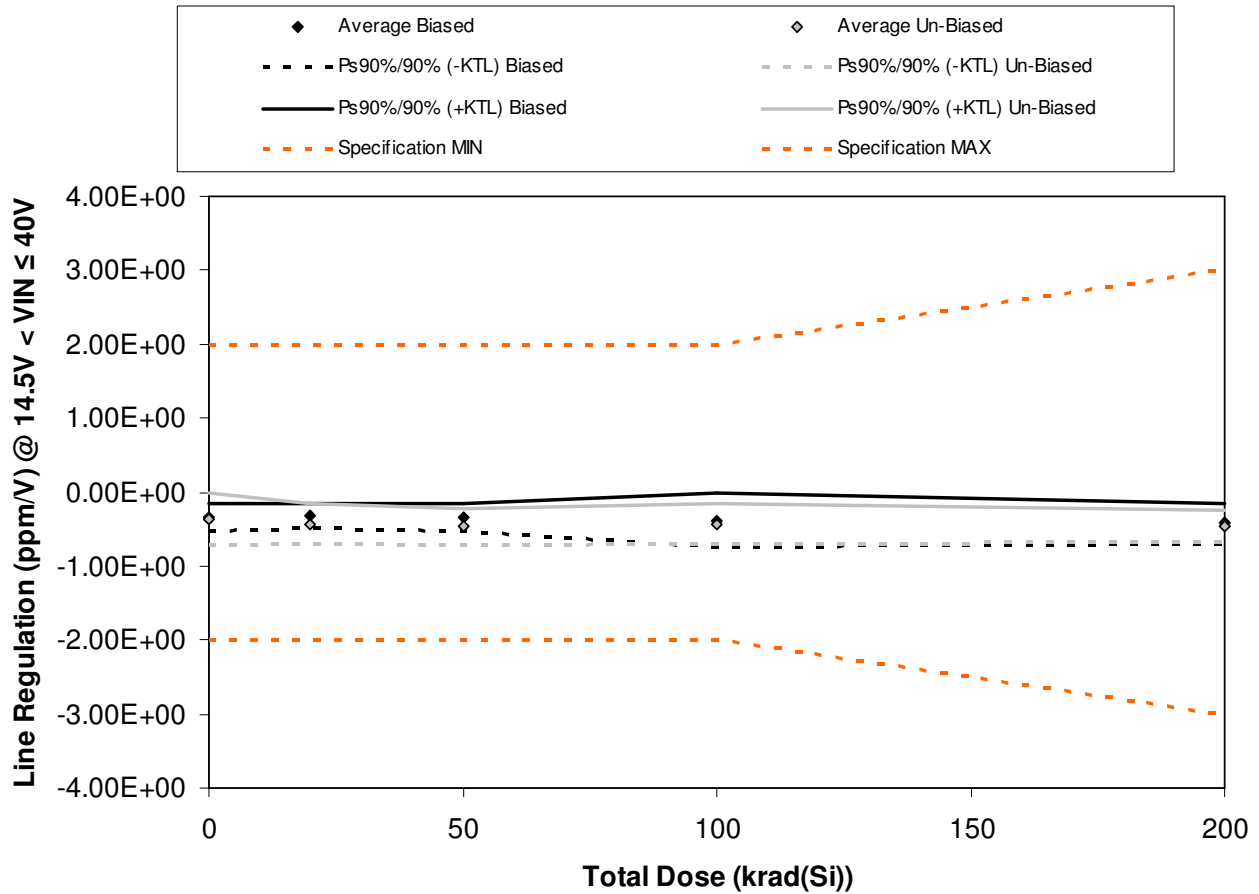


Figure 5.4. Plot of Line Regulation (ppm/V) @ 14.5V < VIN ≤ 40V versus total dose. The solid diamonds are the average of the measured data points for the samples irradiated under electrical bias while the shaded diamonds are the average of the measured data points for the samples irradiated with all pins tied to ground. The black lines (solid and/or dashed) are the average of the data points after application of the KTL statistics on the samples irradiated under electrical bias while the gray lines (solid and/or dashed) are the average of the data points after application of the KTL statistics on the samples irradiated in the unbiased condition. The red dotted line(s) are the pre- and/or post-irradiation minimum and/or maximum specification value as defined in the datasheet and/or test plan.



TID Report
09-528 111206 R1.1

Aeroflex RAD
5017 N. 30th Street
Colorado Springs, CO 80919
(719) 531-0800

Table 5.4. Raw data for Line Regulation (ppm/V) @ 14.5V < VIN ≤ 40V versus total dose, including the statistical analysis, specification and the status of the testing (pass/fail).

Line Regulation (ppm/V) @ 14.5V < VIN ≤ 40V	Total Dose (krad(Si))				
	0	20	50	100	200
Device					
134	-3.40E-01	-3.90E-01	-3.40E-01	-5.20E-01	-4.60E-01
135	-3.20E-01	-2.60E-01	-3.90E-01	-5.10E-01	-3.90E-01
136	-4.20E-01	-2.80E-01	-2.30E-01	-2.00E-01	-2.70E-01
137	-3.90E-01	-3.10E-01	-4.10E-01	-3.40E-01	-5.10E-01
138	-2.50E-01	-3.90E-01	-3.70E-01	-3.30E-01	-4.80E-01
139	-4.30E-01	-2.80E-01	-3.50E-01	-2.90E-01	-4.20E-01
140	-4.50E-01	-5.50E-01	-5.80E-01	-4.60E-01	-4.70E-01
141	-4.90E-01	-4.50E-01	-5.40E-01	-3.80E-01	-5.20E-01
142	-2.90E-01	-4.70E-01	-4.40E-01	-5.30E-01	-5.10E-01
143	-1.80E-01	-3.80E-01	-4.40E-01	-5.00E-01	-3.30E-01
144	-3.70E-01	-4.60E-01	-3.80E-01	-4.00E-01	-3.70E-01
145	-3.30E-01	-2.50E-01	-2.70E-01	-2.30E-01	-1.70E-01
Biased Statistics					
Average Biased	-3.44E-01	-3.26E-01	-3.48E-01	-3.80E-01	-4.22E-01
Std Dev Biased	6.58E-02	6.11E-02	7.09E-02	1.35E-01	9.58E-02
Ps90%/90% (+KTL) Biased	-1.64E-01	-1.59E-01	-1.54E-01	-9.58E-03	-1.59E-01
Ps90%/90% (-KTL) Biased	-5.24E-01	-4.93E-01	-5.42E-01	-7.50E-01	-6.85E-01
Un-Biased Statistics					
Average Un-Biased	-3.68E-01	-4.26E-01	-4.70E-01	-4.32E-01	-4.50E-01
Std Dev Un-Biased	1.29E-01	1.02E-01	9.11E-02	9.73E-02	7.78E-02
Ps90%/90% (+KTL) Un-Biased	-1.34E-02	-1.47E-01	-2.20E-01	-1.65E-01	-2.37E-01
Ps90%/90% (-KTL) Un-Biased	-7.23E-01	-7.05E-01	-7.20E-01	-6.99E-01	-6.63E-01
Specification MIN	-2.00E+00	-2.00E+00	-2.00E+00	-2.00E+00	-3.00E+00
Status	PASS	PASS	PASS	PASS	PASS
Specification MAX	2.00E+00	2.00E+00	2.00E+00	2.00E+00	3.00E+00
Status	PASS	PASS	PASS	PASS	PASS

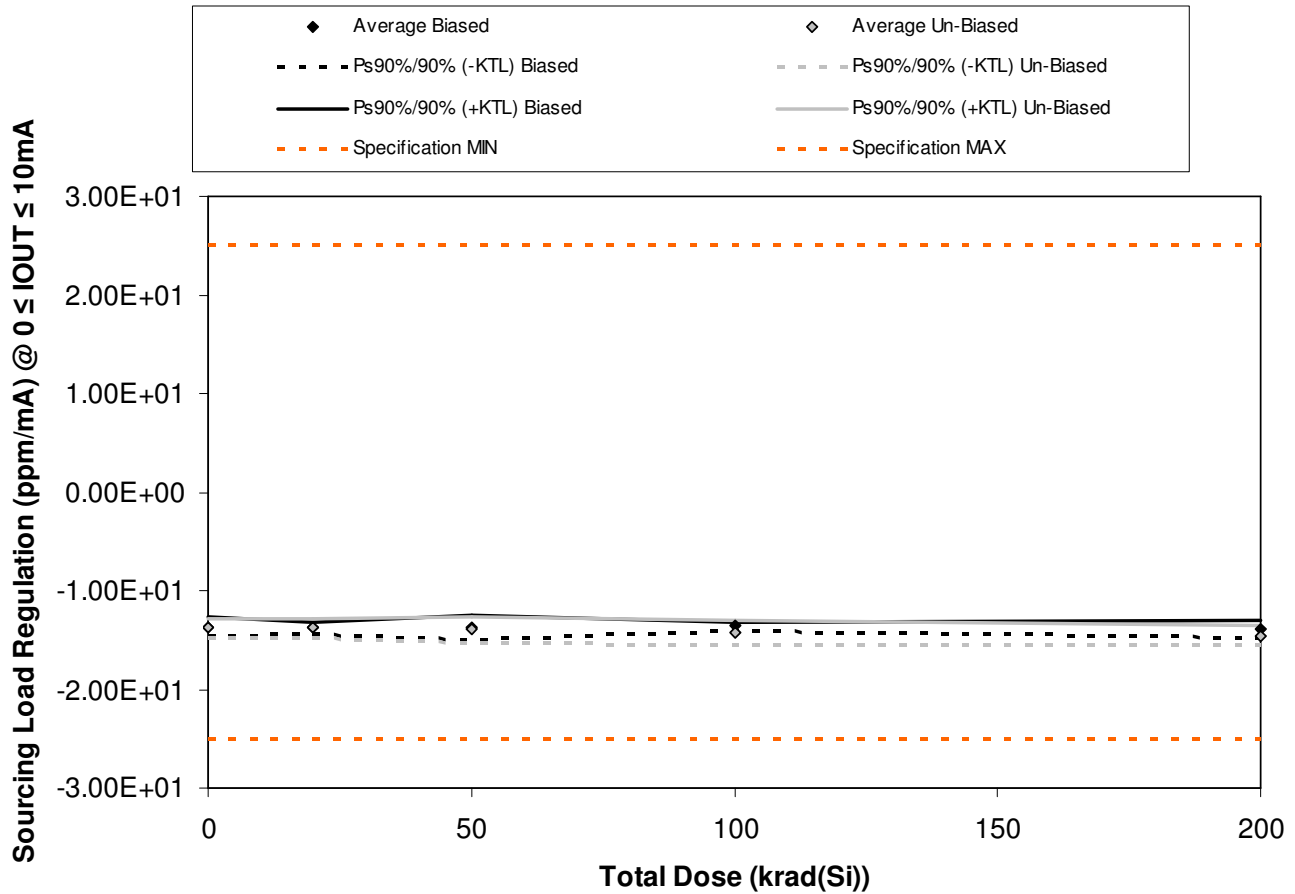


Figure 5.5. Plot of Sourcing Load Regulation (ppm/mA) @ $0 \leq IOU \leq 10mA$ versus total dose. The solid diamonds are the average of the measured data points for the samples irradiated under electrical bias while the shaded diamonds are the average of the measured data points for the samples irradiated with all pins tied to ground. The black lines (solid and/or dashed) are the average of the data points after application of the KTL statistics on the samples irradiated under electrical bias while the gray lines (solid and/or dashed) are the average of the data points after application of the KTL statistics on the samples irradiated in the unbiased condition. The red dotted line(s) are the pre- and/or post-irradiation minimum and/or maximum specification value as defined in the datasheet and/or test plan.



TID Report
09-528 111206 R1.1

Aeroflex RAD
5017 N. 30th Street
Colorado Springs, CO 80919
(719) 531-0800

Table 5.5. Raw data for Sourcing Load Regulation (ppm/mA) @ $0 \leq I_{OUT} \leq 10\text{mA}$ versus total dose, including the statistical analysis, specification and the status of the testing (pass/fail).

Sourcing Load Regulation (ppm/mA) @ $0 \leq I_{OUT} \leq 10\text{mA}$	Total Dose (krad(Si))				
	0	20	50	100	200
Device					
134	-1.39E+01	-1.38E+01	-1.41E+01	-1.37E+01	-1.39E+01
135	-1.40E+01	-1.38E+01	-1.35E+01	-1.37E+01	-1.41E+01
136	-1.31E+01	-1.35E+01	-1.33E+01	-1.33E+01	-1.36E+01
137	-1.36E+01	-1.41E+01	-1.34E+01	-1.36E+01	-1.38E+01
138	-1.37E+01	-1.38E+01	-1.42E+01	-1.38E+01	-1.44E+01
139	-1.37E+01	-1.37E+01	-1.34E+01	-1.39E+01	-1.50E+01
140	-1.36E+01	-1.42E+01	-1.47E+01	-1.47E+01	-1.47E+01
141	-1.43E+01	-1.39E+01	-1.40E+01	-1.48E+01	-1.40E+01
142	-1.39E+01	-1.39E+01	-1.39E+01	-1.39E+01	-1.45E+01
143	-1.33E+01	-1.32E+01	-1.36E+01	-1.38E+01	-1.45E+01
144	-1.43E+01	-1.38E+01	-1.38E+01	-1.38E+01	-1.38E+01
145	-1.27E+01	-1.29E+01	-1.31E+01	-1.38E+01	-1.31E+01
Biased Statistics					
Average Biased	-1.37E+01	-1.38E+01	-1.37E+01	-1.36E+01	-1.40E+01
Std Dev Biased	3.54E-01	2.26E-01	4.41E-01	1.72E-01	3.26E-01
Ps90%/90% (+KTL) Biased	-1.27E+01	-1.32E+01	-1.25E+01	-1.31E+01	-1.31E+01
Ps90%/90% (-KTL) Biased	-1.46E+01	-1.44E+01	-1.49E+01	-1.41E+01	-1.49E+01
Un-Biased Statistics					
Average Un-Biased	-1.38E+01	-1.38E+01	-1.39E+01	-1.42E+01	-1.45E+01
Std Dev Un-Biased	3.55E-01	3.60E-01	4.77E-01	4.73E-01	3.67E-01
Ps90%/90% (+KTL) Un-Biased	-1.28E+01	-1.28E+01	-1.26E+01	-1.29E+01	-1.35E+01
Ps90%/90% (-KTL) Un-Biased	-1.47E+01	-1.48E+01	-1.52E+01	-1.55E+01	-1.55E+01
Specification MIN	-2.50E+01	-2.50E+01	-2.50E+01	-2.50E+01	-2.50E+01
Status	PASS	PASS	PASS	PASS	PASS
Specification MAX	2.50E+01	2.50E+01	2.50E+01	2.50E+01	2.50E+01
Status	PASS	PASS	PASS	PASS	PASS

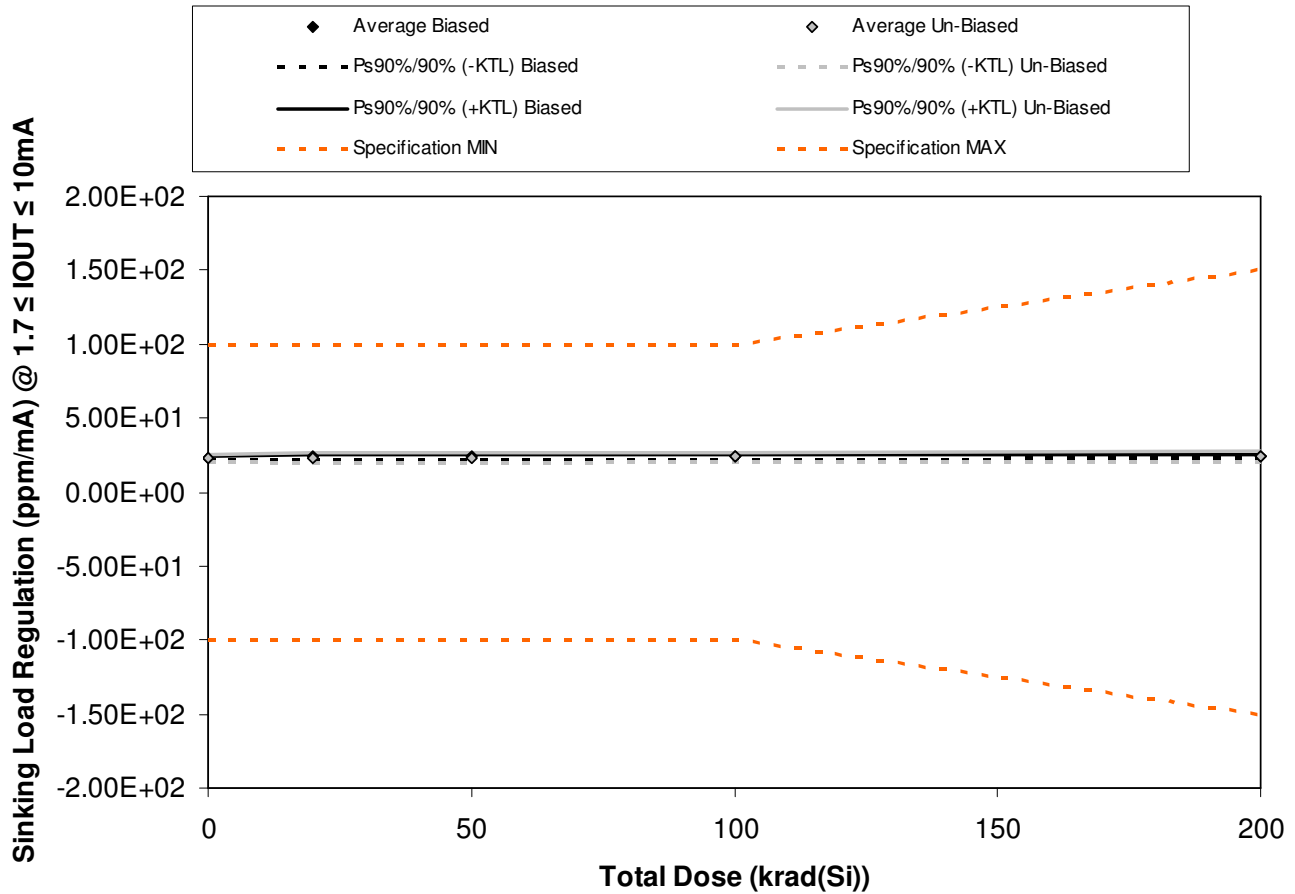


Figure 5.6. Plot of Sinking Load Regulation (ppm/mA) @ $1.7 \leq IO_{OUT} \leq 10mA$ versus total dose. The solid diamonds are the average of the measured data points for the samples irradiated under electrical bias while the shaded diamonds are the average of the measured data points for the samples irradiated with all pins tied to ground. The black lines (solid and/or dashed) are the average of the data points after application of the KTL statistics on the samples irradiated under electrical bias while the gray lines (solid and/or dashed) are the average of the data points after application of the KTL statistics on the samples irradiated in the unbiased condition. The red dotted line(s) are the pre- and/or post-irradiation minimum and/or maximum specification value as defined in the datasheet and/or test plan.



TID Report
09-528 111206 R1.1

Aeroflex RAD
5017 N. 30th Street
Colorado Springs, CO 80919
(719) 531-0800

Table 5.6. Raw data for Sinking Load Regulation (ppm/mA) @ $1.7 \leq I_{OUT} \leq 10\text{mA}$ versus total dose, including the statistical analysis, specification and the status of the testing (pass/fail).

Sinking Load Regulation (ppm/mA) @ $1.7 \leq I_{OUT} \leq 10\text{mA}$	Total Dose (krad(Si))				
	0	20	50	100	200
Device					
134	2.28E+01	2.36E+01	2.37E+01	2.42E+01	2.42E+01
135	2.34E+01	2.42E+01	2.39E+01	2.44E+01	2.45E+01
136	2.36E+01	2.40E+01	2.44E+01	2.37E+01	2.49E+01
137	2.23E+01	2.26E+01	2.28E+01	2.30E+01	2.35E+01
138	2.30E+01	2.37E+01	2.38E+01	2.39E+01	2.40E+01
139	2.45E+01	2.47E+01	2.49E+01	2.52E+01	2.57E+01
140	2.27E+01	2.15E+01	2.21E+01	2.27E+01	2.32E+01
141	2.24E+01	2.31E+01	2.29E+01	2.27E+01	2.36E+01
142	2.23E+01	2.22E+01	2.24E+01	2.31E+01	2.37E+01
143	2.37E+01	2.40E+01	2.46E+01	2.47E+01	2.54E+01
144	2.17E+01	2.21E+01	2.21E+01	2.18E+01	2.20E+01
145	2.29E+01	2.39E+01	2.35E+01	2.35E+01	2.36E+01
Biased Statistics					
Average Biased	2.30E+01	2.36E+01	2.37E+01	2.38E+01	2.42E+01
Std Dev Biased	5.11E-01	6.24E-01	5.96E-01	5.66E-01	5.38E-01
Ps90%/90% (+KTL) Biased	2.44E+01	2.53E+01	2.54E+01	2.54E+01	2.57E+01
Ps90%/90% (-KTL) Biased	2.16E+01	2.19E+01	2.21E+01	2.23E+01	2.27E+01
Un-Biased Statistics					
Average Un-Biased	2.31E+01	2.31E+01	2.34E+01	2.37E+01	2.43E+01
Std Dev Un-Biased	9.66E-01	1.29E+00	1.26E+00	1.16E+00	1.14E+00
Ps90%/90% (+KTL) Un-Biased	2.58E+01	2.66E+01	2.68E+01	2.69E+01	2.75E+01
Ps90%/90% (-KTL) Un-Biased	2.05E+01	1.96E+01	1.99E+01	2.05E+01	2.12E+01
Specification MIN	-1.00E+02	-1.00E+02	-1.00E+02	-1.00E+02	-1.50E+02
Status	PASS	PASS	PASS	PASS	PASS
Specification MAX	1.00E+02	1.00E+02	1.00E+02	1.00E+02	1.50E+02
Status	PASS	PASS	PASS	PASS	PASS

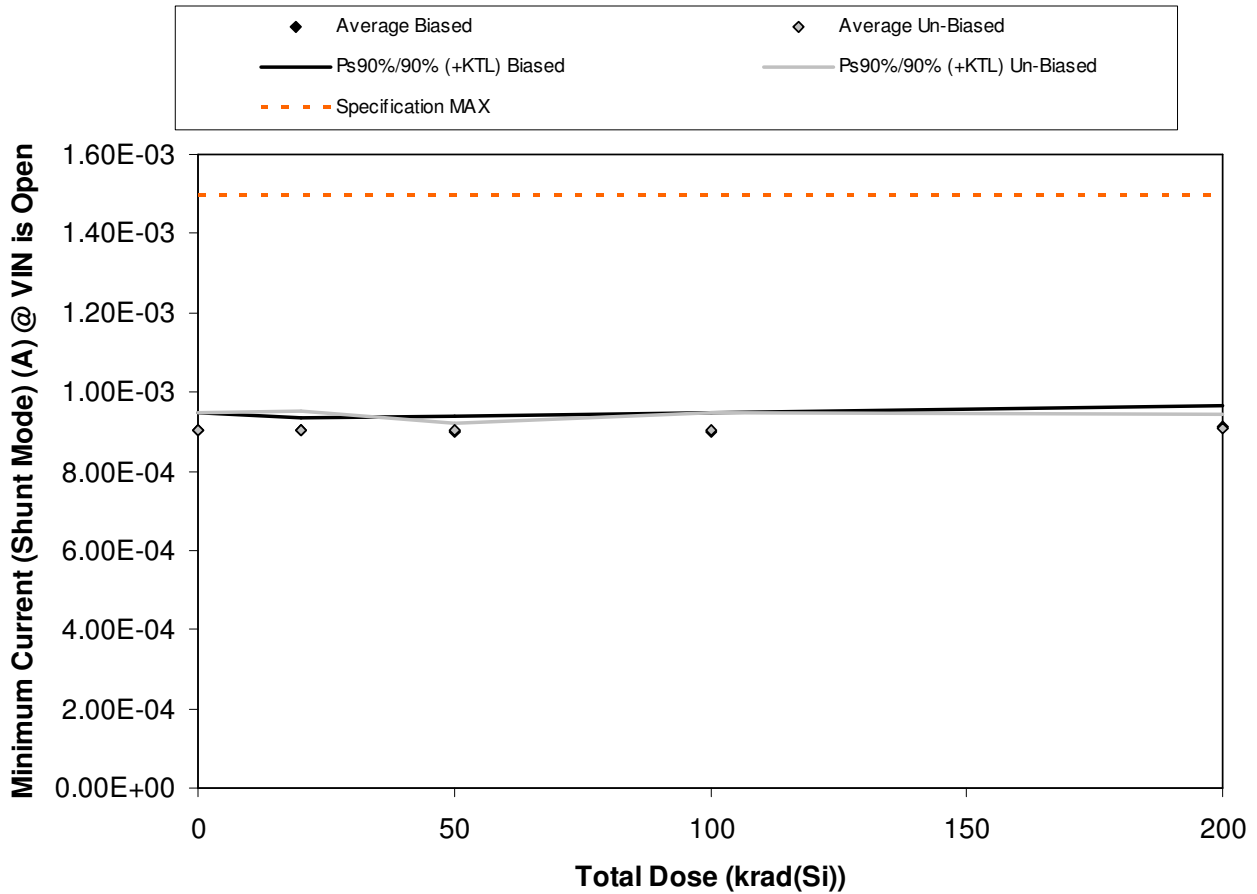


Figure 5.7. Plot of Minimum Current (Shunt Mode) (A) @ VIN is Open versus total dose. The solid diamonds are the average of the measured data points for the samples irradiated under electrical bias while the shaded diamonds are the average of the measured data points for the samples irradiated with all pins tied to ground. The black lines (solid and/or dashed) are the average of the data points after application of the KTL statistics on the samples irradiated under electrical bias while the gray lines (solid and/or dashed) are the average of the data points after application of the KTL statistics on the samples irradiated in the unbiased condition. The red dotted line(s) are the pre- and/or post-irradiation minimum and/or maximum specification value as defined in the datasheet and/or test plan.



TID Report
09-528 111206 R1.1

Aeroflex RAD
5017 N. 30th Street
Colorado Springs, CO 80919
(719) 531-0800

Table 5.7. Raw data for Minimum Current (Shunt Mode) (A) @ VIN is Open versus total dose, including the statistical analysis, specification and the status of the testing (pass/fail).

Minimum Current (Shunt Mode) (A) @ VIN is Open	Total Dose (krad(Si))				
	Device	0	20	50	100
134	9.24E-04	9.10E-04	9.15E-04	9.18E-04	9.33E-04
135	8.98E-04	9.02E-04	8.91E-04	9.01E-04	9.08E-04
136	9.20E-04	9.17E-04	9.15E-04	9.17E-04	9.30E-04
137	8.93E-04	8.91E-04	8.84E-04	8.79E-04	8.90E-04
138	8.89E-04	8.89E-04	8.92E-04	8.86E-04	8.93E-04
139	8.94E-04	8.91E-04	8.99E-04	9.05E-04	8.98E-04
140	9.22E-04	9.22E-04	9.04E-04	9.19E-04	9.16E-04
141	9.20E-04	9.22E-04	9.14E-04	9.20E-04	9.26E-04
142	8.91E-04	8.87E-04	8.99E-04	8.83E-04	9.09E-04
143	8.93E-04	8.93E-04	8.98E-04	9.00E-04	8.98E-04
144	9.11E-04	8.96E-04	9.08E-04	9.04E-04	8.99E-04
145	8.94E-04	8.98E-04	8.91E-04	8.97E-04	9.05E-04
Biased Statistics					
Average Biased	9.05E-04	9.02E-04	8.99E-04	9.00E-04	9.11E-04
Std Dev Biased	1.61E-05	1.20E-05	1.46E-05	1.77E-05	2.01E-05
Ps90%/90% (+KTL) Biased	9.49E-04	9.35E-04	9.39E-04	9.49E-04	9.66E-04
Ps90%/90% (-KTL) Biased	8.61E-04	8.69E-04	8.59E-04	8.52E-04	8.56E-04
Un-Biased Statistics					
Average Un-Biased	9.04E-04	9.03E-04	9.03E-04	9.05E-04	9.09E-04
Std Dev Un-Biased	1.56E-05	1.75E-05	6.69E-06	1.52E-05	1.20E-05
Ps90%/90% (+KTL) Un-Biased	9.47E-04	9.51E-04	9.21E-04	9.47E-04	9.42E-04
Ps90%/90% (-KTL) Un-Biased	8.61E-04	8.55E-04	8.84E-04	8.64E-04	8.76E-04
Specification MAX	1.50E-03	1.50E-03	1.50E-03	1.50E-03	1.50E-03
Status	PASS	PASS	PASS	PASS	PASS



6.0. Summary / Conclusions

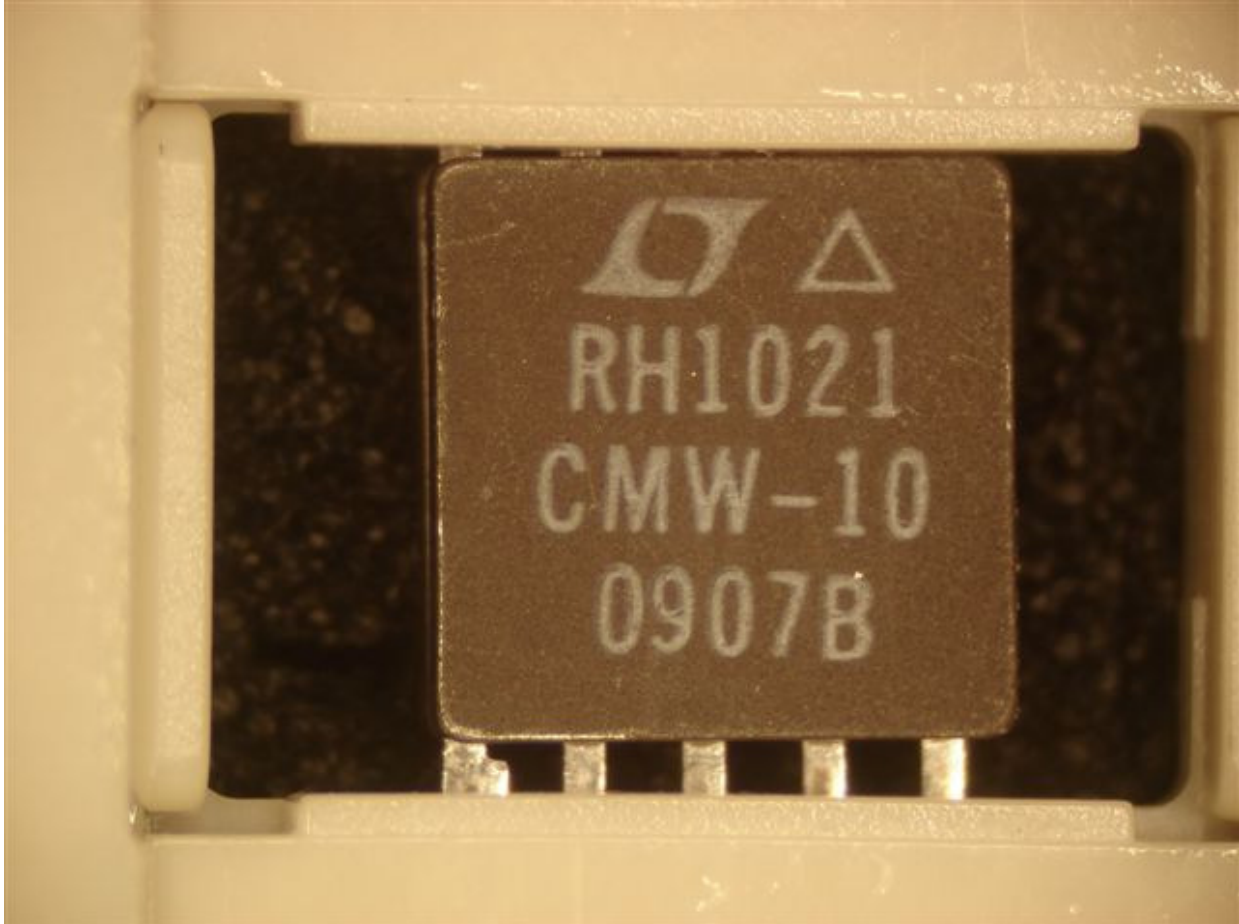
The total ionizing dose testing described in this final report was performed using the facilities at Aeroflex RAD's Longmire Laboratories in Colorado Springs, CO. The high dose rate total ionizing dose (TID) source is a JLSA 81-24 irradiator modified to provide a panoramic exposure. The Co-60 rods are held in the base of the irradiator heavily shielded by lead, during the radiation exposures the rod is raised by an electronic timer/controller and the exposure is performed in air. The dose rate for this irradiator in this configuration ranges from <math><1\text{rad(Si)/s}</math> to a maximum of approximately

The parametric data was obtained as "read and record" and all the raw data plus an attributes summary are contained in this report as well as in a separate Excel file. The attributes data contains the average, standard deviation and the average with the KTL values applied. The KTL value used in this work is 2.742 per MIL-HDBK-814 using one sided tolerance limits of 90/90 and a 5-piece sample size. The 90/90 KTL values were selected to match the statistical levels specified in the MIL-PRF-38535 sampling plan for the qualification of a radiation hardness assured (RHA) component. Note that the following criteria must be met for a device to pass the total ionizing dose test: following the radiation exposure each of the 5 pieces irradiated under electrical bias shall pass the specification value. The units irradiated without electrical bias and the KTL statistics are included in this report for reference only. If any of the 5 pieces irradiated under electrical bias exceed the device post radiation data sheet specification limits, then the lot could be logged as a failure.

Based on this criterion the RH1021CMW-10 Precision 10V Reference (from the lot date code identified on the first page of this test report) PASSED the total ionizing dose test to the maximum tested dose level of



Appendix A: Photograph of a Sample Unit-Under-Test to Show Part Traceability





Appendix B: Radiation Bias Connections and Absolute Maximum Ratings

TID Radiation Biased Conditions:

Pin	Function	Connection / Bias
1	NC	NC
2	VIN	To 15V, 0.1µF decoupling to pin 4
3	NC	NC
4	GND	To -15V, 0.1µF decoupling to pin 2
5	NC	NC
6	NC	NC
7	TRIM	NC
8	VOUT	NC
9	NC	NC
10	NC	NC

TID Radiation Unbiased Conditions:

Pin	Function	Connection / Bias
1	NC	GND
2	VIN	GND
3	NC	GND
4	GND	GND
5	NC	GND
6	NC	GND
7	TRIM	GND
8	VOUT	GND
9	NC	GND
10	NC	GND

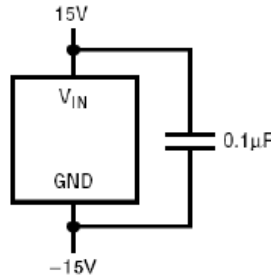


Figure B.1. Irradiation bias circuit. This figure was extracted from Linear Technology RH1021-10 Datasheet.

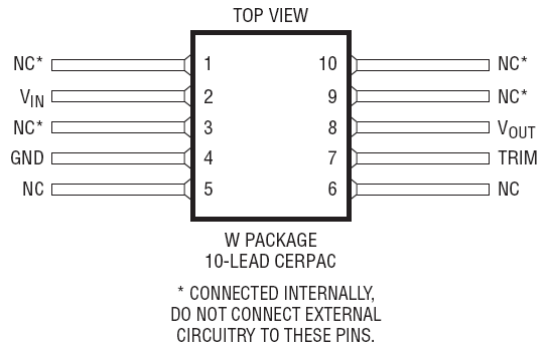


Figure B.2. W package drawing (for reference only). This figure was extracted from Linear Technology RH1021-10 Datasheet.

Absolute Maximum Ratings:

Parameter	Max Rating
Input Voltage	40V
Input/Output Voltage Differential	35V
Output to Ground Voltage (Shunt Mode)	16V
Trim Pin to Ground Voltage Positive	V _{OUT}
Trim Pin to Ground Voltage Negative	-20V
Output Short-Circuit Duration V _{IN} =35V	10sec
Output Short-Circuit Duration V _{IN} ≤20V	Indefinite



Appendix C: Electrical Test Parameters and Conditions

The expected ranges of values as well as the measurement conditions are taken from Linear Technology RH1021-10 datasheet. All electrical tests for this device are performed on one of Aeroflex RAD's LTS2020 Test Systems. The LTS2020 Test System is a programmable parametric tester that provides parameter measurements for a variety of digital, analog and mixed signal products including voltage regulators, voltage comparators, D to A and A to D converters. The LTS2020 Test System achieves accuracy and sensitivity through the use of software self-calibration and an internal relay matrix with separate family boards and custom personality adapter boards. The tester uses this relay matrix to connect the required test circuits, select the appropriate voltage / current sources and establish the needed measurement loops for all the tests performed. The measured parameters and test conditions are shown in Table C.1.

A listing of the measurement precision/resolution for each parameter is shown in Table C.2. The precision/resolution values were obtained from test data or from the DAC resolution of the LTS-2020 for the particular test shown, whichever is greater. To generate the precision/resolution shown in Table C.2, one of the units-under-test was tested repetitively (a total of 10-times with re-insertion between tests) to obtain the average test value and standard deviation. Using this test data MIL-HDBK-814 90/90 KTL statistics were applied to the measured standard deviation to generate the final measurement range. This value encompasses the precision/resolution of all aspects of the test system, including the LTS2020 mainframe, family board, socket assembly and DUT board as well as insertion error. In some cases, the measurement resolution is limited by the internal DACs, which results in a measured standard deviation of zero. In these instances the precision/resolution will be reported back as the LSB of the DAC.

Note that the testing and statistics used in this document are based on an “analysis of variables” technique, which relies on small sample sizes to qualify much larger lot sizes (see MIL-HDBK-814, p. 91 for a discussion of statistical treatments). Not all measured parameters are well suited to this approach due to inherent large variations. If necessary, larger samples sizes could be used to qualify these parameters using an “attributes” approach.



Table C.1. Measured parameters and test conditions for the RH1021CMW-10 Precision 10V Reference.

Parameter	Symbol	Test Conditions
Supply Current (A)	IS	VIN=15V, IOU=0
Output Voltage (V)	VOUT	VIN=15V, IOU=0
Line Regulation (ppm/V)	LINE REG1	11.5V ≤ VIN ≤ 14.5V
Line Regulation (ppm/V)	LINE REG2	14.5V < VIN ≤ 40V
Sourcing Load Regulation (ppm/mA)	LOAD REG Source	0 ≤ IOU ≤ 10mA
Sinking Load Regulation (ppm/mA)	LOAD REG Sink	1.7 ≤ IOU ≤ 10mA
Minimum Current (Shunt Mode) (A)	IMIN	VIN is Open

Table C.2. Measured parameters, pre-irradiation specifications and measurement precision for the RH1021CMW-10 Precision 10V Reference.

Parameter	Pre-Irradiation Specification		Measurement Precision/Resolution
	MIN	MAX	
IS		1.70E-03	±2.19E-05
VOUT	9.995E+00	1.0005E+00	±6.53E-05
LINE REG1	-4.00E+00	4.00E+00	±1.23E+00
LINE REG2	-2.00E+00	2.00E+00	±1.61E-01
LOAD REG Source	-2.50E+01	2.50E+01	±3.59E-00
LOAD REG Sink	-1.00E+02	1.00E+02	±6.58E-01
IMIN		1.50E-03	±7.35E-06



Appendix D: List of Figures Used in the Results Section (Section 5)

- 5.1. Supply Current (A) @ $V_{IN}=15V$, $I_{OUT}=0$
- 5.2. Output Voltage (V) @ $V_{IN}=15V$, $I_{OUT}=0$
- 5.3. Line Regulation (ppm/V) @ $11.5V \leq V_{IN} \leq 14.5V$
- 5.4. Line Regulation (ppm/V) @ $14.5V < V_{IN} \leq 40V$
- 5.5. Sourcing Load Regulation (ppm/mA) @ $0 \leq I_{OUT} \leq 10mA$
- 5.6. Sinking Load Regulation (ppm/mA) @ $1.7 \leq I_{OUT} \leq 10mA$
- 5.7. Minimum Current (Shunt Mode) (A) @ V_{IN} is Open