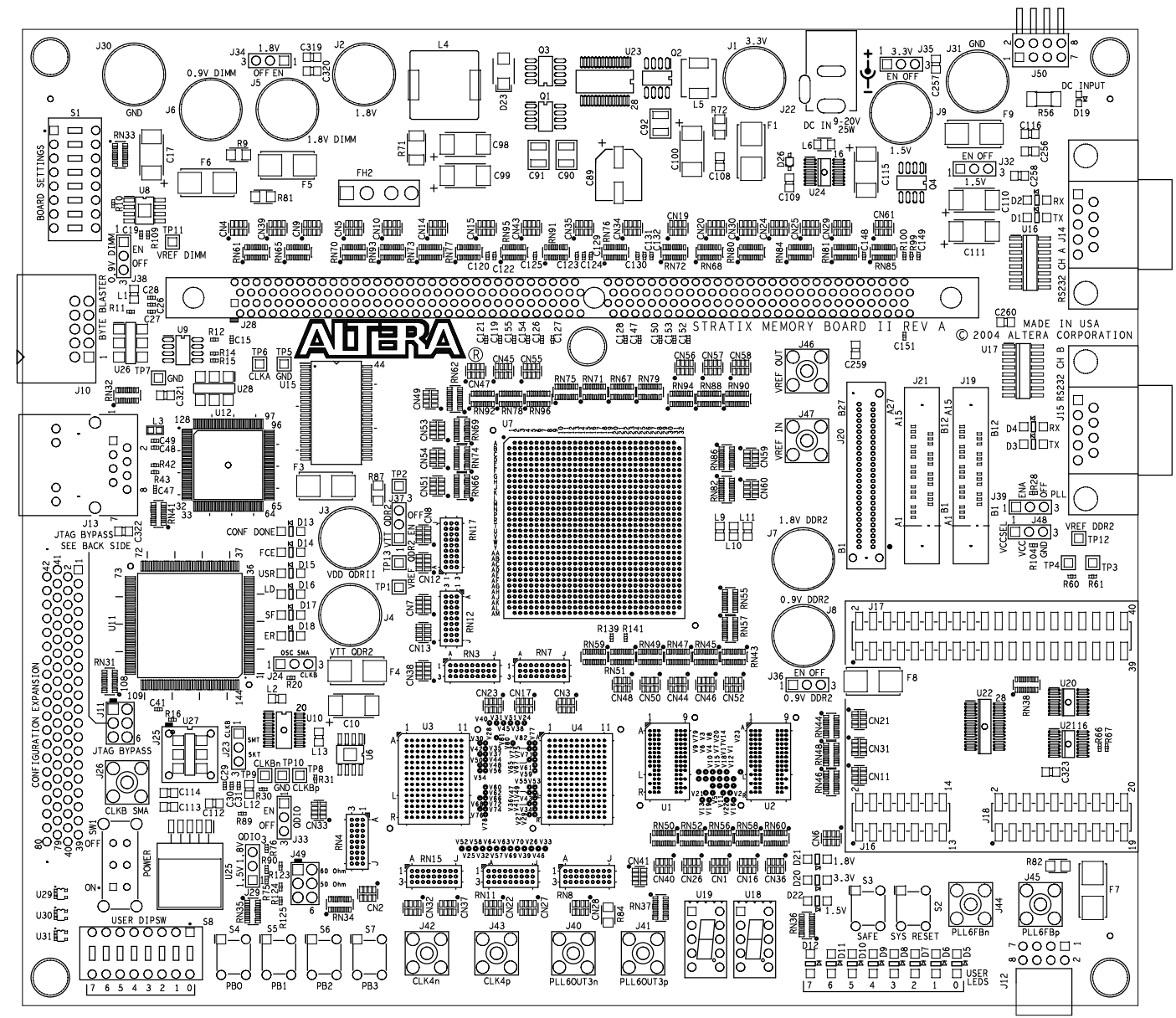


8 7 6 5 4 3 2 1

REVISIONS			
LTR	DESCRIPTION	DATE	APPROVED
A	INITIAL RELEASE	02/25/04	


NOTES: UNLESS OTHERWISE SPECIFIED

- ASSEMBLE BOARD PER IPC-A-610(LATEST REVISION) STANDARD.
- HANDLE MOISTURE SENSITIVE DEVICES(MSD) PER MANUFACTURE'S CALL OUT ON MSD LABEL. IF MSD LABEL IS MISSING OR NOT LEGIBLE THEN ALL PLASTIC PACKAGED COMPONENTS ARE TO BE CONSIDERED MSD LEVEL 6 AND USE EIA/JEP 113-A FOR HANDLING.
- REWORK MUST BE APPROVED BY CUSTOMER BEFORE BEING ACCEPTABLE USE IPC-R-700(LATEST REVISION) FOR ALL PCA REWORK APPROVED.
- SQUARE PIN PAD DENOTES PIN 1 OF ICs/CONNECTORS, POSITIVE END FOR CAPACITORS OR CATHODE END FOR DIODES.
- INSTALL BAR CODE LABEL APPROX WHERE SHOWN, INCLUDING S/N.



COMPONENT SIDE

8 7 6 5 4 3 2 1

DO NOT SCALE DRAWING	DRAWN FLEXTRONICS	DATE 02/25/04	 101 8000 Altera Corporation 10101 Schroeder Rd., San Jose, CA 95131			
THIS DOCUMENT CONTAINS INFORMATION CONSIDERED PROPRIETARY, AND SHALL NOT BE REPRODUCED WHOLLY OR IN PART, NOR DISCLOSED TO OTHERS WITHOUT SPECIFIC WRITTEN PERMISSION	CHECKED				DESCRIP	
MATERIAL	MECH ENG		ASSEMBLY DRAWING			
SEE BOM	PROJ ENG		STRATIX MEMORY BOARD II			
REMOVE ALL BURRS AND SHARP EDGES	MFG ENG					
NEXT ASSY P/N	MODEL	UNLESS OTHERWISE SPECIFIED: DIMENSIONS ARE IN INCHES AND INCLUDE PLATING AND DR PAINT. DECIMAL FRACTION ANGLE ± 2°	CODE IDENT	SIZE D	DRAWING NO. 130-0310112-01	REV A
			SCALE: 2:1		SHEET 1 OF 1	