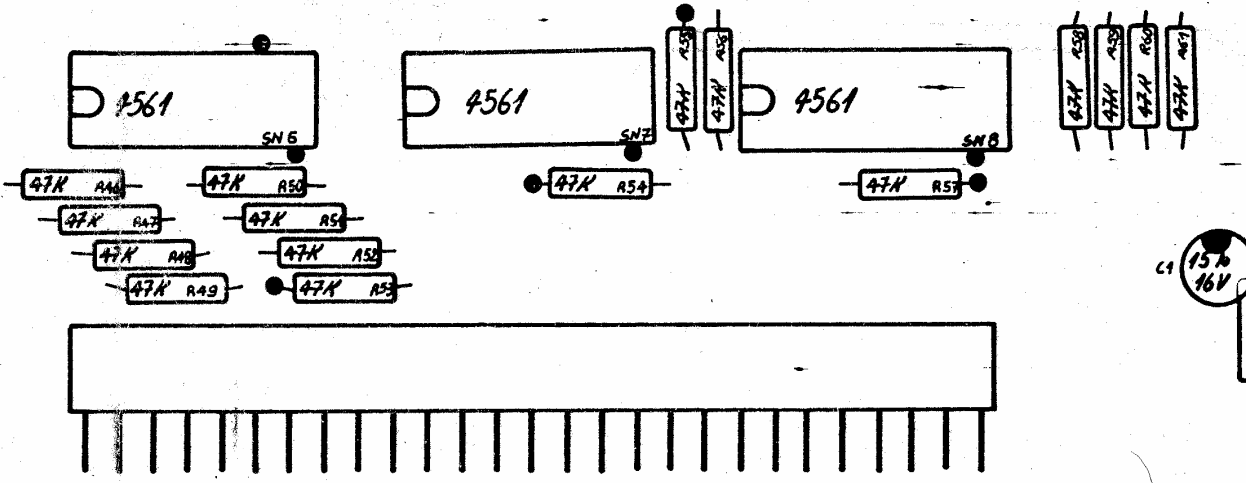
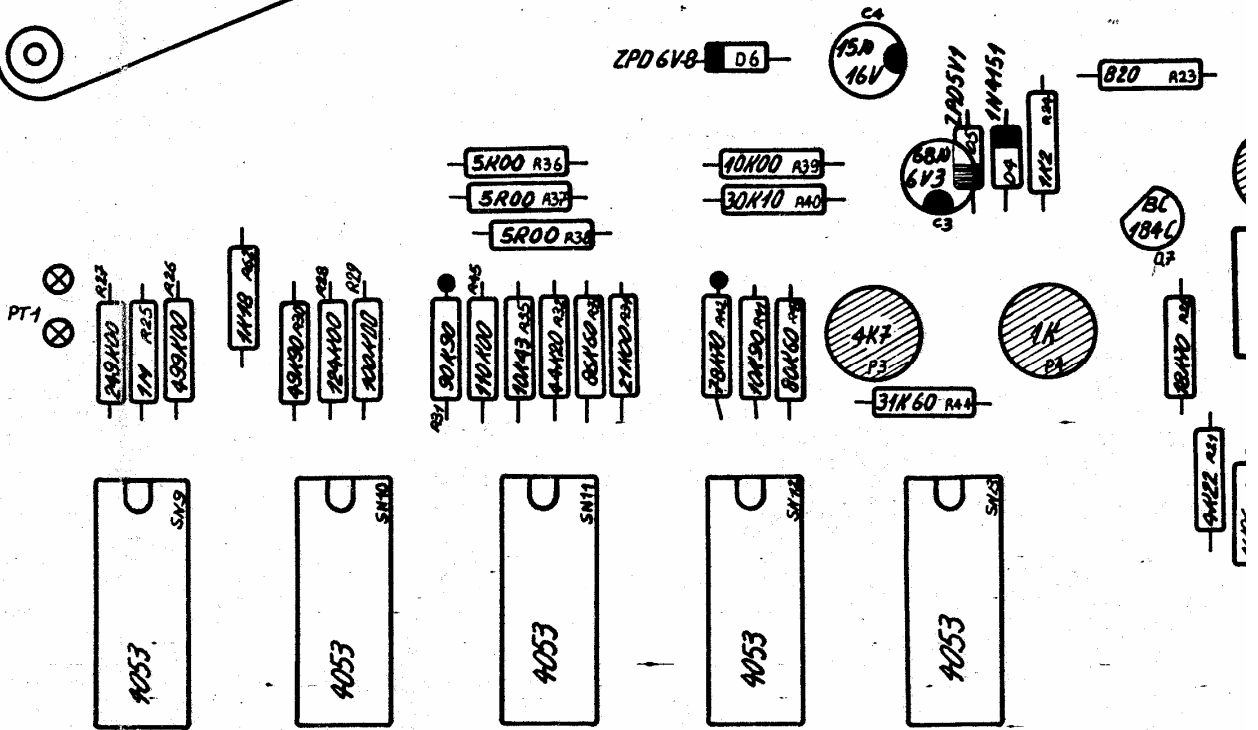
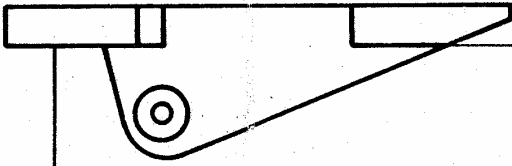
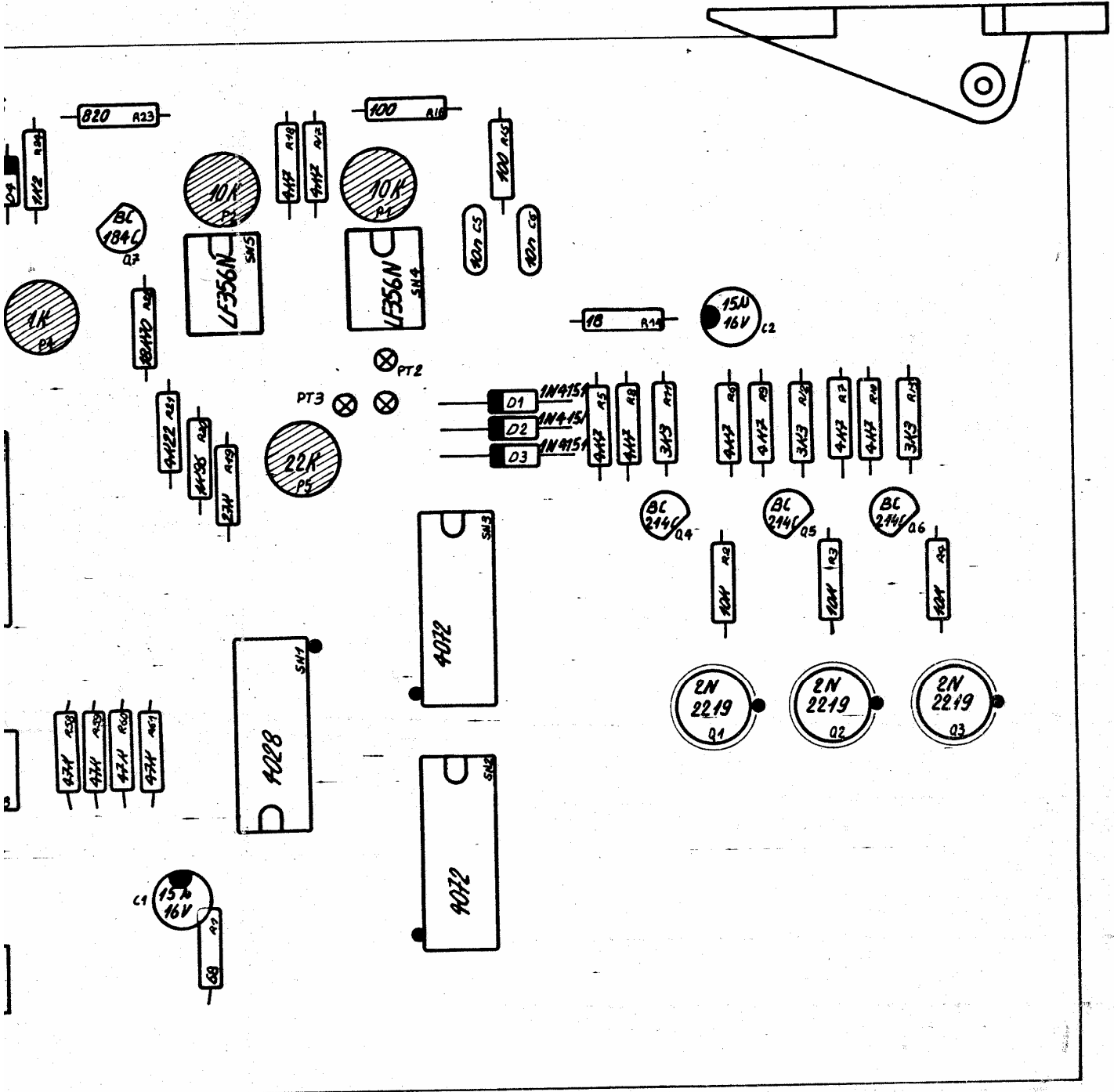


PLATE V.5
PLANCHE V.5

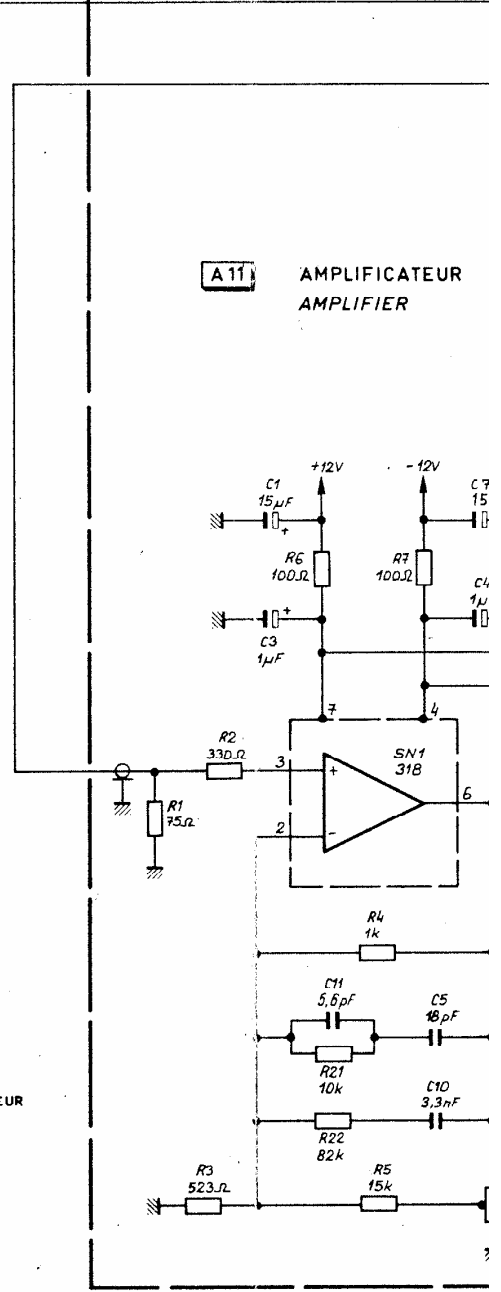
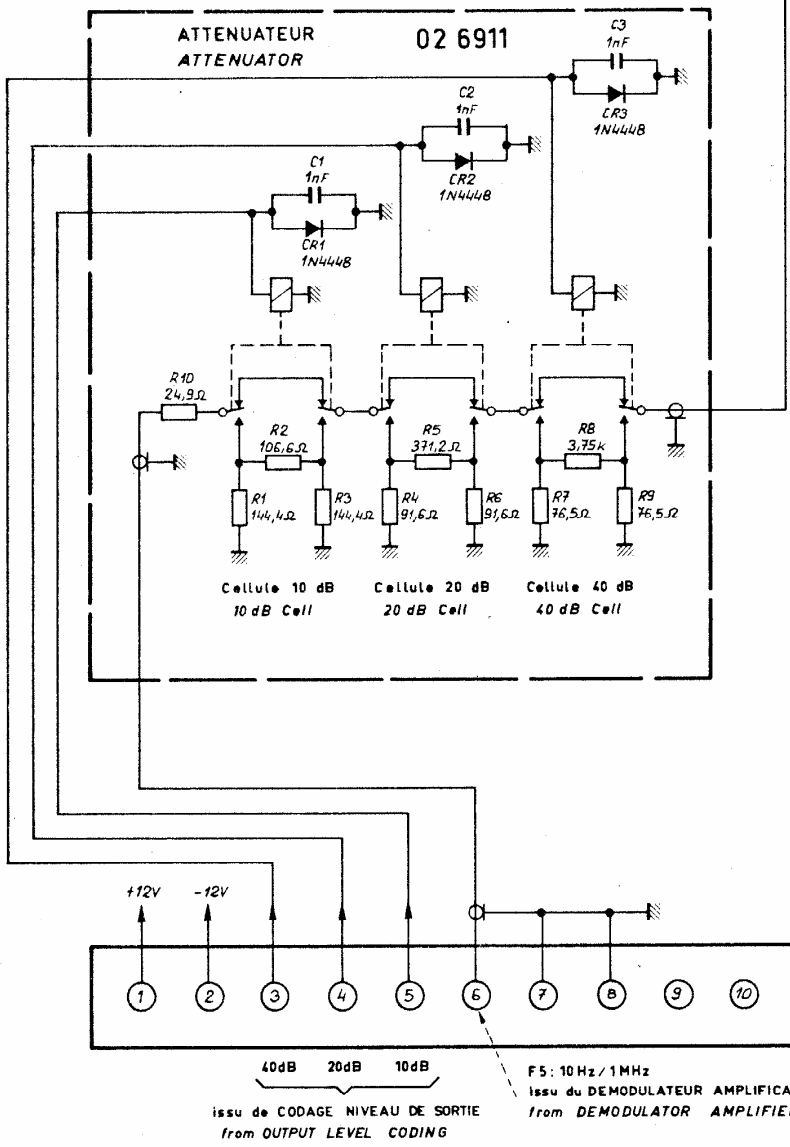
| | | | |
|---|--------|--------------------------|--------------------|
| Ce document ne peut être communiqué ni reproduit sans autorisation | | radiotéléphonique | DATE: JUILLET 1978 |
| ETUDE | DESSIN | VERIFIE | PAGE: 1 / 1 |
| ACORT | H.V. | 2230 A | 976908A |
| CODAGE NIVEAU DE SORTIE OUTPUT LEVEL CODING | | | |





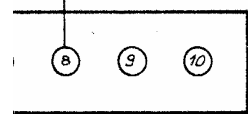
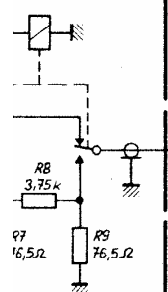
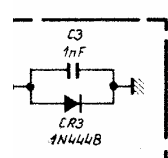
| REPERE INDEXE | REF. ADRET PART NUMBER | DESCRIPTION | PART DESCRIPTION | FOURNISSEUR/PLAN SUPPLIER/DRAWING | QTE QTY |
|------------------|---------------------------|--------------------------------|------------------|--------------------------------------|------------|
| B -001 | 1427011600 | TM 27 MCIG | MALE*CARTE# | TM 27 MCIG MALE TREC | 1 |
| C -001 | 3700180000 | 22MMF/16V 5,08 | STAND L TAG | 22MMF/16V 5,08 STAND L TAG | 1 |
| C -002 | 3700180000 | 22MMF/16V 5,08 | STAND L TAG | 22MMF/16V 5,08 STAND L TAG | 1 |
| C -003 | 3700250000 | 47MMF/6,3V 5,08 | STAND L TAG | 47MMF/6,3V 5,08 STAND L TAG | 1 |
| C -004 | 3700180000 | 22MMF/16V 5,08 | STAND L TAG | 22MMF/16V 5,08 STAND L TAG | 1 |
| C -005 | 3150031000 | 10NF 5,08 63V | GOX 767 14 | 10NF 5,08 63V GOX 767 14 | 1 |
| C -006 | 3150031000 | 10NF 5,08 63V | GOX 767 14 | 10NF 5,08 63V GOX 767 14 | 1 |
| D -001 | 4500020000 | 1N4151 | | 1N4151 FU'ITT | 1 |
| D -002 | 4500020000 | 1N4151 | | 1N4151 FU'ITT | 1 |
| D -003 | 4500020000 | 1N4151 | | 1N4151 FU'ITT | 1 |
| D -004 | 4500020000 | 1N4151 | | 1N4151 FU'ITT | 1 |
| D -005 | 4600030000 | ZPD5,1 | | ZPD5,1 ITT | 1 |
| D -006 | 4600080000 | ZPD6,8 | | ZPD6,8 ITT | 1 |
| P -001 | 2153100000 | 10K T05 CERMET | T 7 YA | 10K T05 CERMET T 7 YA | 1 |
| P -002 | 2153100000 | 10K T05 CERMET | T 7 YA | 10K T05 CERMET T 7 YA | 1 |
| P -003 | 2152470000 | 4K7 T05 CERMET | T 7 YA | 4K7 T05 CERMET T 7 YA | 1 |
| P -004 | 2152100000 | 1 K T05 CERMET | T 7 YA | 1 K T05 CERMET T 7 YA | 1 |
| P -005 | 2153220000 | 22K T05 CERMET | T 7 YA | 22K T05 CERMET T 7 YA | 1 |
| Q -001 | 4800060000 | 2N2219 | | 2N2219 RTC | 1 |
| Q -002 | 4800060000 | 2N2219 | | 2N2219 RTC | 1 |
| Q -003 | 4800060000 | 2N2219 | | 2N2219 RTC | 1 |
| Q -004 | 4300110000 | BC560C /416C/415C/559C(BC214C) | | BC560C /413C/415C/559C(BC214C) | 1 |
| Q -005 | 4300110000 | BC560C /416C/415C/559C(BC214C) | | BC560C /413C/415C/559C(BC214C) | 1 |
| Q -006 | 4300110000 | BC560C /416C/415C/559C(BC214C) | | BC560C /413C/415C/559C(BC214C) | 1 |
| Q -007 | 4300190000 | BC550C /414C/413C/549C(BC184C) | | BC550C /414C/413C/549C(BC184C) | 1 |
| R -001 | 2210006800 | 68R | 5% N4 | 68R 5% N4 SOUCOR | 1 |
| R -002 | 2210031000 | 10K | 5% N4 | 10K 5% N4 SOUCOR | 1 |
| R -003 | 2210031000 | 10K | 5% N4 | 10K 5% N4 SOUCOR | 1 |
| R -004 | 2210031000 | 10K | 5% N4 | 10K 5% N4 SOUCOR | 1 |
| R -005 | 2210024700 | 4K7 | 5% N4 | 4K7 5% N4 SOUCOR | 1 |
| R -006 | 2210024700 | 4K7 | 5% N4 | 4K7 5% N4 SOUCOR | 1 |
| R -007 | 2210024700 | 4K7 | 5% N4 | 4K7 5% N4 SOUCOR | 1 |
| R -008 | 2210024700 | 4K7 | 5% N4 | 4K7 5% N4 SOUCOR | 1 |
| R -009 | 2210024700 | 4K7 | 5% N4 | 4K7 5% N4 SOUCOR | 1 |
| R -010 | 2210024700 | 4K7 | 5% N4 | 4K7 5% N4 SOUCOR | 1 |
| R -011 | 2210023300 | 3K3 | 5% N4 | 3K3 5% N4 SOUCOR | 1 |
| R -012 | 2210023300 | 3K3 | 5% N4 | 3K3 5% N4 SOUCOR | 1 |
| R -013 | 2210023300 | 3K3 | 5% N4 | 3K3 5% N4 SOUCOR | 1 |
| R -014 | 2210001800 | 18R | 5% N4 | 18R 5% N4 SOUCOR | 1 |
| R -015 | 2210011000 | 100R | 5% N4 | 100R 5% N4 SOUCOR | 1 |
| R -016 | 2210011000 | 100R | 5% N4 | 100R 5% N4 SOUCOR | 1 |
| R -017 | 2210024700 | 4K7 | 5% N4 | 4K7 5% N4 SOUCOR | 1 |
| R -018 | 2210024700 | 4K7 | 5% N4 | 4K7 5% N4 SOUCOR | 1 |
| R -019 | 2210032700 | 27K | 5% N4 | 27K 5% N4 SOUCOR | 1 |
| R -020 | 2500119600 | 1K96 | 1% 0,3 W | SMA207 1K96 1% 0,3 W | 1 |
| R -021 | 2500142200 | 4K22 | 1% 0,3 W | SMA207 4K22 1% 0,3 W | 1 |
| R -022 | 2500218700 | 18K7 | 1% 0,3 W | SMA207 18K7 1% 0,3 W | 1 |
| R -023 | 2210018200 | 820R | 5% N4 | 820R 5% N4 SOUCOR | 1 |
| R -024 | 2210021200 | 1K2 | 5% N4 | 1K2 5% N4 SOUCOR | 1 |
| R -025 | 2210051000 | 1M | 5% N4 | 1M 5% N4 SOUCOR | 1 |
| R -026 | 2500349900 | 499K | 1% 0,3 W | SMA207 499K 1% 0,3 W | 1 |
| R -027 | 2500324900 | 249K | 1% 0,3 W | SMA207 249K 1% 0,3 W | 1 |
| R -028 | 2500312400 | 124K | 1% 0,3 W | SMA207 124K 1% 0,3 W | 1 |
| R -029 | 2500310000 | 100K | 1% 0,3 W | SMA207 100K 1% 0,3 W | 1 |
| R -030 | 2500249900 | 49K9 | 1% 0,3 W | SMA207 49K9 1% 0,3 W | 1 |
| R -031 | 2500290900 | 90K9 | 1% 0,3 W | SMA207 90K9 1% 0,3 W | 1 |
| R -032 | 2500244200 | 44K2 | 1% 0,3 W | SMA207 44K2 1% 0,3 W | 1 |
| R -033 | 2500286600 | 86K6 | 1% 0,3 W | SMA207 86K6 1% 0,3 W | 1 |
| R -034 | 2500221000 | 21K0 | 1% 0,3 W | SMA207 21K0 1% 0,3 W | 1 |
| R -035 | 2601104300 | 10K43 | 0,25% 50PPM | H10 10K43 0,25% 50PPM | 1 |
| R -036 | 2500151100 | 5K11 | 1% 0,3 W | SMA207 5K11 1% 0,3 W | 1 |
| R -037 | 2600500000 | 5K00 | 0,25% 50PPM | H10 5K00 0,25% 50PPM | 1 |
| R -038 | 2600500000 | 5K00 | 0,25% 50PPM | H10 5K00 0,25% 50PPM | 1 |
| R -039 | 2601100000 | 10K00 | 0,25% 50PPM | H10 10K00 0,25% 50PPM | 1 |
| R -040 | 2601301000 | 30K10 | 0,25% 50PPM | H10 30K10 0,25% 50PPM | 1 |
| R -041 | 2601109000 | 10K90 | 0,25% 50PPM | H10 10K90 0,25% 50PPM | 1 |
| R -042 | 2500278700 | 78K7 | 1% 0,3 W | SMA207 78K7 1% 0,3 W | 1 |
| R -043 | 2500280600 | 80K6 | 1% 0,3 W | SMA207 80K6 1% 0,3 W | 1 |
| R -044 | 2500231600 | 31K6 | 1% 0,3 W | SMA207 31K6 1% 0,3 W | 1 |
| R -045 | 2500311000 | 110K | 1% 0,3 W | SMA207 110K 1% 0,3 W | 1 |
| R -046 | 2210034700 | 47K | 5% N4 | 47K 5% N4 SOUCOR | 1 |
| R -047 | 2210034700 | 47K | 5% N4 | 47K 5% N4 SOUCOR | 1 |
| R -048 | 2210034700 | 47K | 5% N4 | 47K 5% N4 SOUCOR | 1 |
| R -049 | 2210034700 | 47K | 5% N4 | 47K 5% N4 SOUCOR | 1 |
| R -050 | 2210034700 | 47K | 5% N4 | 47K 5% N4 SOUCOR | 1 |
| R -051 | 2210034700 | 47K | 5% N4 | 47K 5% N4 SOUCOR | 1 |
| R -052 | 2210034700 | 47K | 5% N4 | 47K 5% N4 SOUCOR | 1 |
| R -053 | 2210034700 | 47K | 5% N4 | 47K 5% N4 SOUCOR | 1 |
| R -054 | 2210034700 | 47K | 5% N4 | 47K 5% N4 SOUCOR | 1 |

| REPERE INDEXE | REF. ADRET PART NUMBER | DESCRIPTION | PART DESCRIPTION | FOURNISSEUR/PLAN SUPPLIER/DRAWING | QTE QTY |
|---------------|------------------------|-------------------------------|----------------------------------|-----------------------------------|---------|
| R -055 | 2210034700 | 47K | 5% N4 * 47K | 5% N4 SOUCOR | 1 |
| R -056 | 2210034700 | 47K | 5% N4 * 47K | 5% N4 SOUCOR | 1 |
| R -057 | 2210034700 | 47K | 5% N4 * 47K | 5% N4 SOUCOR | 1 |
| R -058 | 2210034700 | 47K | 5% N4 * 47K | 5% N4 SOUCOR | 1 |
| R -059 | 2210034700 | 47K | 5% N4 * 47K | 5% N4 SOUCOR | 1 |
| R -060 | 2210034700 | 47K | 5% N4 * 47K | 5% N4 SOUCOR | 1 |
| R -061 | 2210034700 | 47K | 5% N4 * 47K | 5% N4 SOUCOR | 1 |
| R -062 | 2600118000 | 1K18 0,25% 50PPM | H10 * 1K18 0,25% 50PPM | H10 HOLCO | 1 |
| SN -001 | 4160402800 | C-MOS 4028 | * C-MOS 4028 | RTC | 1 |
| SN -002 | 4160407200 | C-MOS 4072 | * C-MOS 4072 | RTC | 1 |
| SN -003 | 4160407200 | C-MOS 4072 | * C-MOS 4072 | RTC | 1 |
| SN -004 | 4200320000 | LF 356 N B+ | * LF 356 N B+ | NS | 1 |
| SN -005 | 4200320000 | LF 356 N B+ | * LF 356 N B+ | NS | 1 |
| SN -006 | 4160456100 | C-MOS 4561 MC 14561 BCP | * C-MOS 4561 MC 14561 BCP | MOTOROLA | 1 |
| SN -007 | 4160456100 | C-MOS 4561 MC 14561 BCP | * C-MOS 4561 MC 14561 BCP | MOTOROLA | 1 |
| SN -008 | 4160456100 | C-MOS 4561 MC 14561 BCP | * C-MOS 4561 MC 14561 BCP | MOTOROLA | 1 |
| SN -009 | 4160405300 | C-MOS 4053 | * C-MOS 4053 | RTC | 1 |
| SN -010 | 4160405300 | C-MOS 4053 | * C-MOS 4053 | RTC | 1 |
| SN -011 | 4160405300 | C-MOS 4053 | * C-MOS 4053 | RTC | 1 |
| SN -012 | 4160405300 | C-MOS 4053 | * C-MOS 4053 | RTC | 1 |
| SN -013 | 4160405300 | C-MOS 4053 | * C-MOS 4053 | RTC | 1 |
| Z0 | 0206770000 | 00 ETIQUETTE 6908 | 2230A * 00 LABEL 6908 | 2230A 942375..... | 1 |
| Z1 | 1269080600 | CI COMMANDE NIVEAU | 2230A * PC LEVEL CONTROL | 2230A G996908 | 1 |
| Z1 | 1400109900 | POINT TEST | * TEST POINT | C940850 | 5 |
| Z1 | 1900200000 | EXTRACTEUR DE CARTE ELEVATEUR | * BOARD EXTRACTOR LIFTER | TRELEC | 2 |
| Z4 | 4900070000 | ENTRETOISE T05 | T05-001 * SPACER T05 | T05-001 JERMYN | 3 |
| Z4 | 4900310000 | 16 SUPPORT C.I. DIL | J23-5016 * 16 CONNECTOR P.C. DIL | J23-5016 JERMYN | 5 |
| Z6 | 6400530000 | OUILLET LAITON | N° 2070 * FIXING EYELET BRASS | N° 2070 MFOH | 2 |

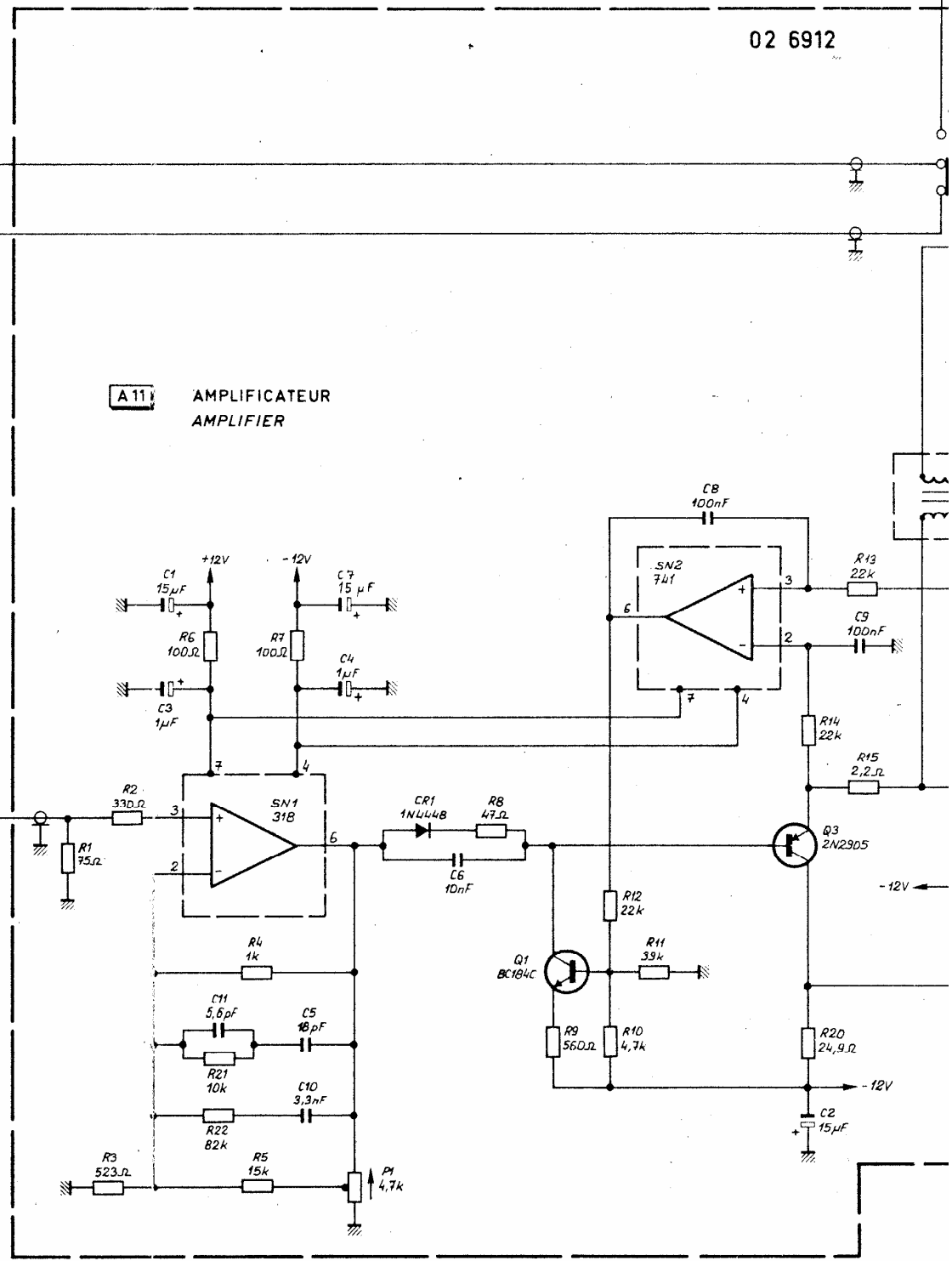


02 6912

A 11 AMPLIFICATEUR
AMPLIFIER



10 Hz / 1 MHz
du DEMODULATEUR AMPLIFICATEUR
d DEMODULATOR AMPLIFIER



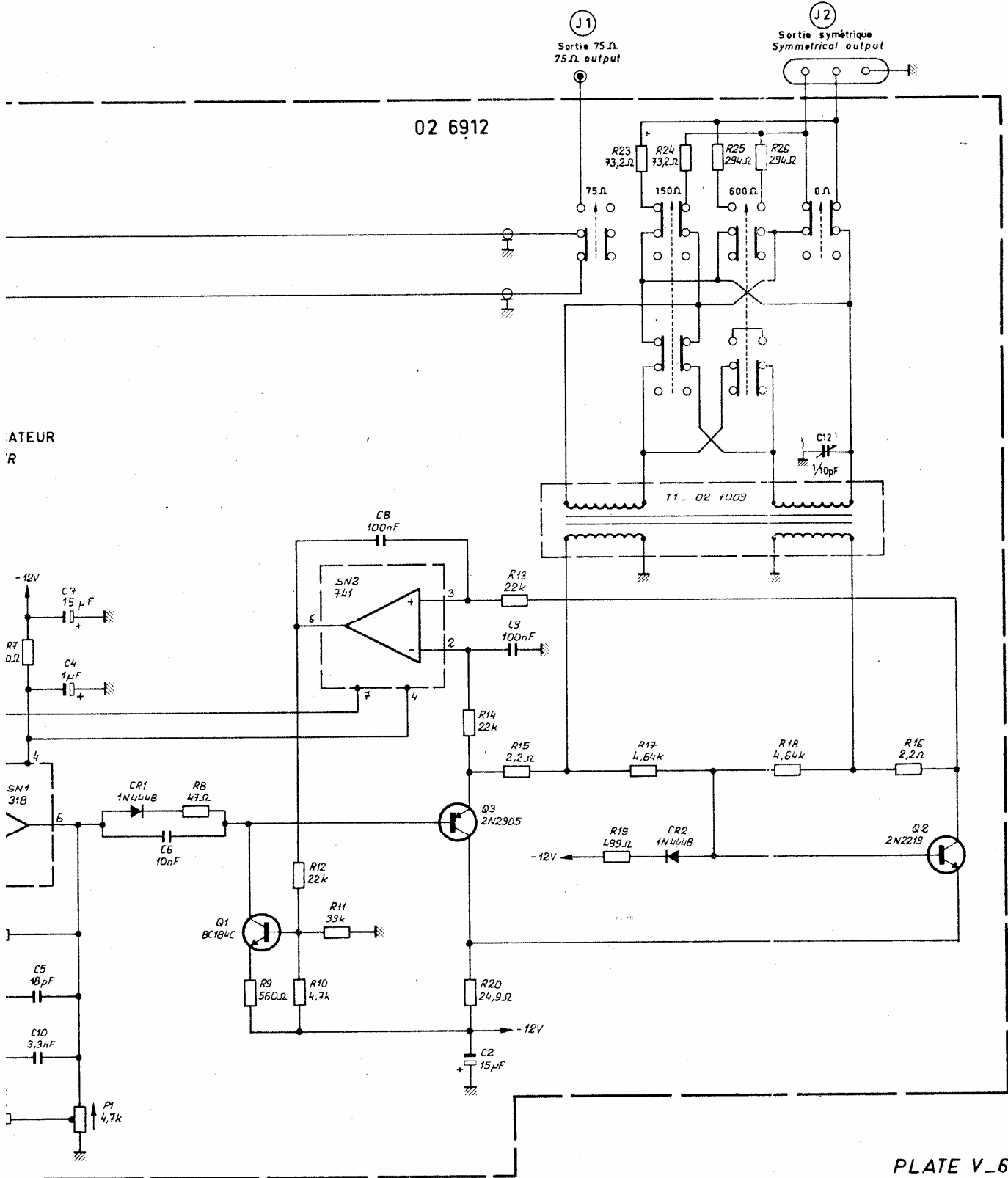
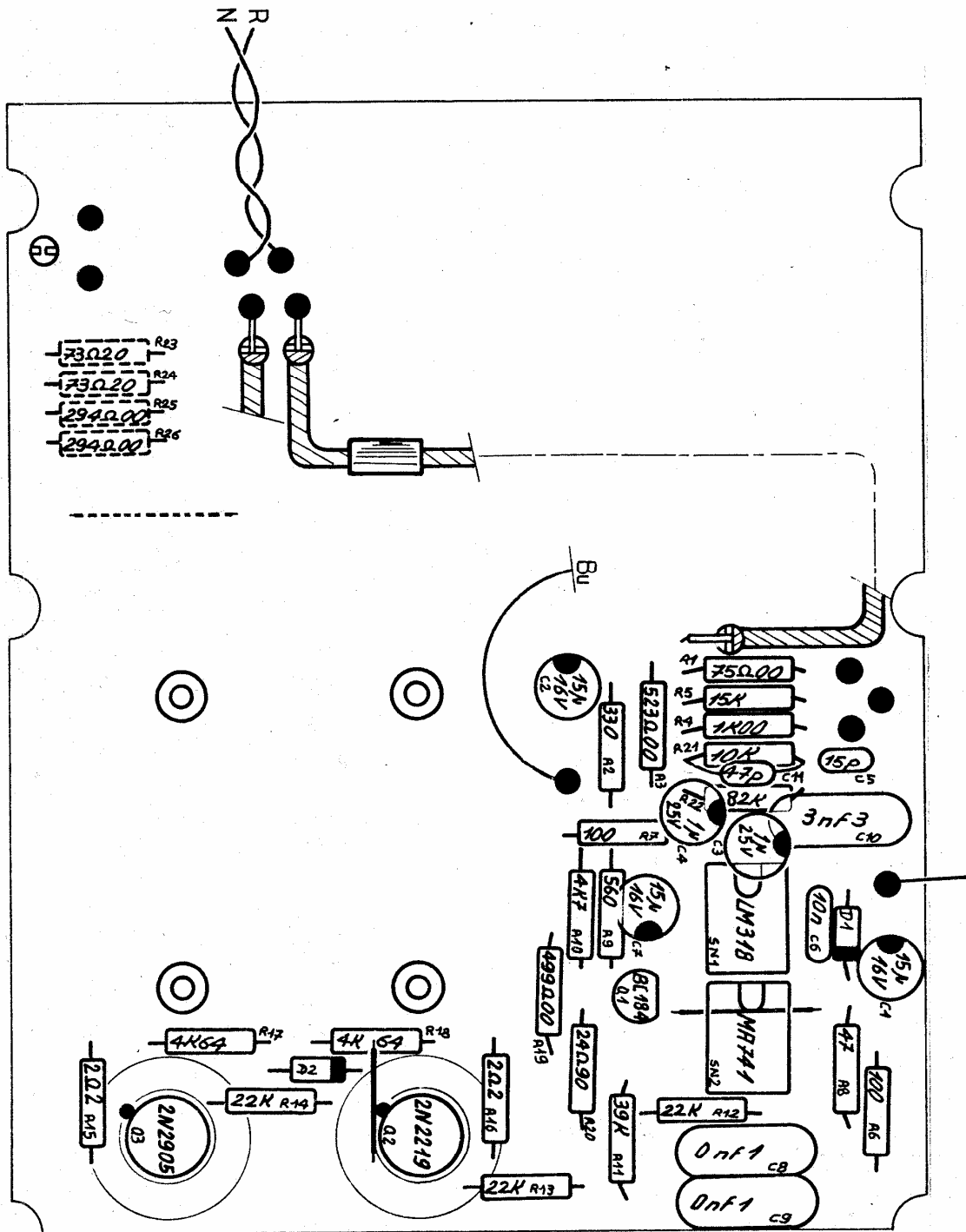
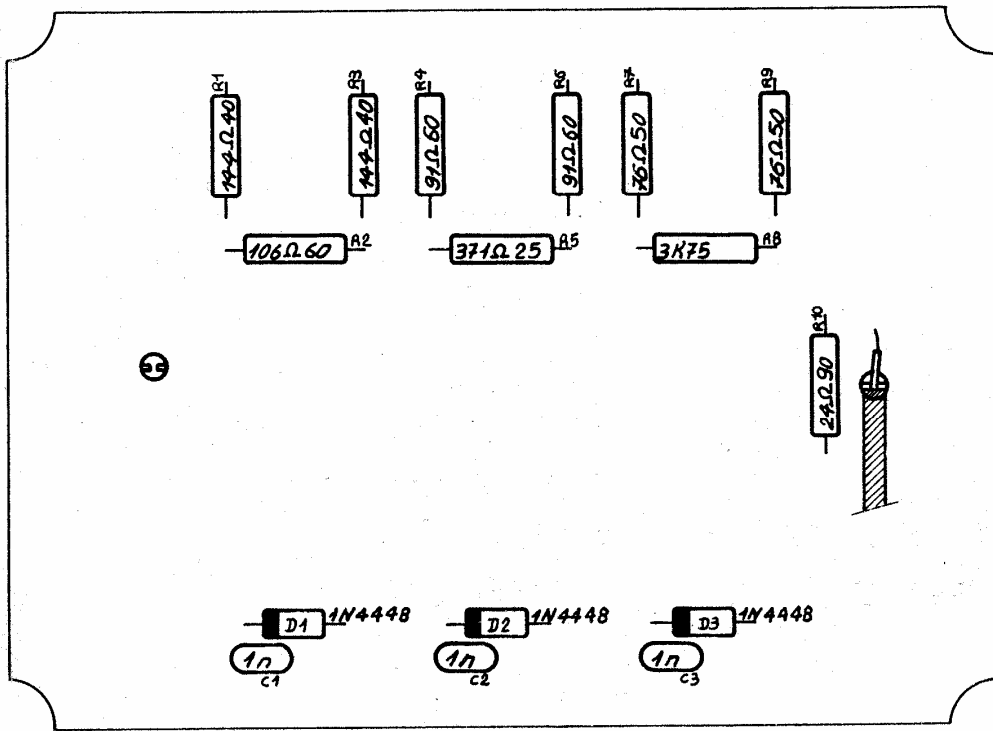
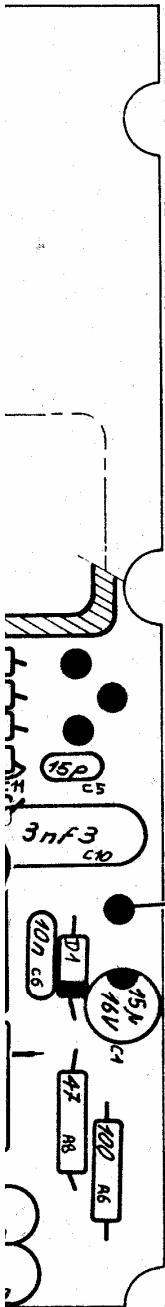


PLATE V_6
 PLANCHE V_6

| | | | | | |
|---|--------|---------|----------------------------|--|---------------------|
| Ce document ne peut être communiqué ni reproduit sans autorisation. | | | schret électronique | | DATE : JUILLET 1978 |
| ÉTUDE | DESSIN | VÉRIFIE | 223 A | | PAGE : 1 / 1 |
| ACORT | H.V. | | MODULE DE SORTIE | | 976910C |
| | | | OUTPUT MODULE | | |





 *026910000 11 BAQUET DE SORTIE 2230A * 11 OUTPUT MODULE 2230A J920871.C976910 *

| REPERE INDEXE | REF. ADRET PART NUMBER | DESCRIPTION | PART DESCRIPTION | FOURNISSEUR/PLAN SUPPLIER/DRAWING | QTE QTY |
|---------------|------------------------|--------------------------------|------------------------------------|-----------------------------------|---------|
| | 001 0269110000 | 03 ATTENUATEUR | 2230A * 03 ATTENUATOR | 2230A C932524 | 1 |
| | 001 0269120000 | 11 AMPLI SYMETRIQUE | 2230A * 11 SYMMETRICAL AMPLI ... | 2230A H932351 1&2/2.. | 1 |
| | -012 3600050000 | 2/10 PF ... REF C010 808 | 23109 * 2/10 PF ... REF C010 808 | 23109 RTC (C010) | 1 |
| C | -001 2152470000 | 4K7 T05 CERMET T 7 YA | * 4K7 T05 CERMET T 7 YA | SFERNICE | 1 |
| P | 0270090000 | 02 TRANSFO DE SORTIE ... | 2230A * 02 OUTPUT TRANSFO | 2230A A920936 | 1 |
| Z0 | 1100030000 | FIL ROUGE | KY30-04 * RED THREAD | KY30-04 FILECA | 0 |
| Z1 | 1100070000 | FIL BLEU | KY30-04 * BLUE THREAD | KY30-04 FILECA | 0 |
| Z1 | 1100440000 | CABLE BLINDE GRIS | FMA2R * GREY ARMORED CABLE | FMA2R FILECA | 0 |
| Z1 | 1100530000 | FIL.NU.ETAME.6/10 | * TINNED BARE THREAD 6/10 | ELECTROFIL | 0 |
| Z1 | 1100550000 | FIL.NU.ETAME.10/10 | * TINNED BARE THREAD10/10 | ELECTROFIL | 0 |
| Z1 | 1300450000 | GAINÉ F4,8 FP301 3/16 ... | SFM 48 * SHEATH F4.8 FP301 3/16 | SFM 48 HELLERMANN | 0 |
| Z1 | 1300610000 | PASSE.FIL | REF 751 * FEED-THROUGH SLEEVE ... | REF 751 MFOM | 1 |
| Z1 | 1400215800 | BNC EMBASE ECROU FEMEL | R141559 * BNC BASE THUMB FEMALE | R141559 RADIALL | 1 |
| Z1 | 1400217200 | PRISE SIEMENS C42334 A176 | A11 * SIEMENS PLUG C42334 A176 | A11 SIEMENS | 1 |
| Z1 | 1410007600 | TB 10 M | MALE * TB 10 M | MALE TREC | 1 |
| Z1 | 1520412300 | 04 TOUCHES ORE 10 BAQSYM | 2230A * 04 TOUCHES ORE 10 BAQSYM | 2230A D932472 | 1 |
| Z1 | 1600090000 | RELAYS 2 INV. G2U-234P-NT | 12DC * RELAYS 2 REV. G2U-234P-NT | 12DC OMRON | 3 |
| Z1 | 1900010000 | GUIDE CARTE ANTIU.FIXAT. | PIONS * BOARD GUIDE FIXATION PIONS | TREC | 1 |
| Z3 | 3100430000 | 1000PF TRAVERSEE 8020D4000 | 400V * 1000PF PINCH 8020D4000 | 400V BDBQ 5 STETTNER | 2 |
| Z5 | 5500110000 | TUBE B30 GT 4.1X2X12.5 | * TUBE B30 GT 4.1X2X12.5 | COFELEC | 1 |
| Z6 | 6100030800 | TCB M3X 8 U DIN7985-4,8 | INOX * TCB M3X 8 U DIN7985-4,8 | INOX BD | 2 |
| Z6 | 6107241900 | N'4X19 ACI A TOLE F/80' CRUCIF | * N'4X19 ACI A TOLE F/80' CRUCIF | SAGIC | 2 |
| Z6 | 6130110400 | LAD 2,5X 4 CYLINDRIQUE FENDUE | * LAD 2,5 X 4 CYLINDRIQUE FENDUE | SAGIC | 16 |
| Z6 | 6130110500 | LAD 2,5X 5 CYLINDRIQUE FENDUE | * LAD 2.5 X 5 CYLINDER SLOT | SAGIC | 6 |
| Z6 | 6130111000 | LAD 2,5X10 CYLINDRIQUE FENDUE | * LAD 2.5 X 10 CYLINDER SLOT | SAGIC | 2 |
| Z6 | 6200010000 | ECROU H M2,5 U NFE27-411-5 | INOX * NUT H M2.5 U NFE27-411-5 | INOX BD | 3 |
| Z6 | 6200030000 | ECROU H M3 U NF E27-411-5 | INOX * NUT H M3 U NF E27-411-5 | INOX BD | 2 |
| Z6 | 6220010000 | LAI 2,5 HEXAGONAL USUEL 'H' | * BRASS 2.5 USUAL HEXAGON 'H' | SAGIC | 2 |
| Z6 | 6301010000 | DI 2,5 EVENTAIL NFE27-618 | INOX * DI 2.5 FAN NFE27-618 | INOX BD | 2 |
| Z6 | 6305030000 | ACI 3 CONTACT REF 55-03-01 | * STEEL 3 CONTACT REF 55-03-01 | NOMEL | 2 |
| Z6 | 6400350000 | COSSE A SOUDER | 2003E * SOLDERING TERMINAL | 2003E MFOM | 1 |
| Z6 | 6400670000 | RIVET POP 3,2 L 4 ALU ABS 41 | * POP RIVET 3.2 L 4 ALU ABS 41 | MFOM | 2 |
| Z8 | 8006710600 | FOND AMPLI-ATTENUATEUR .. | 2230A * AMPLI-ATT. BACKGROUND .. | 2230A E932163 | 1 |
| Z8 | 8006710800 | PLATINE AVANT AMPLI-ATTE | 2230A * AMPLI-ATT.FRONT MOUNTING | 2230A D942100 | 1 |
| Z8 | 8006710900 | COUVERCLE AMPLI-ATTENUAT | 2230A * AMPLI-ATTENUATOR COVER . | 2230A C932162 | 1 |
| Z8 | 8006733000 | RONDELLE BNC 12X10X2 | 2230A * WASHER BNC 12X10X2 | 2230A A942291 | 2 |
| Z8 | 8006763200 | TOUCHE GRISE D6H11 OREOR | 2230A * GREY TOUCH D6H11 OREOR | 2230A A942431 | 4 |
| Z8 | 8106710300 | 01 BAQ AMPLI ATTENUATEUR | 2230A * 01 ATTEN. AMPLI MODULE . | 2230A D920776 | 1 |

 *0269110000 03 ATTENUATEUR 2230A * 03 ATTENUATOR 2230A C932524..... *

| REPERE INDEXE | REF. ADRET PART NUMBER | DESCRIPTION | PART DESCRIPTION | FOURNISSEUR/PLAN SUPPLIER/DRAWING | QTE QTY | |
|------------------|---------------------------|----------------------|------------------|--------------------------------------|----------------------------|---|
| C -001 | 3120021000 | 1 NF 2,5 | 2222 630 51 102 | * 1 NF 2,5 | 2222 630 51 102 COGECO | 1 |
| C -002 | 3120021000 | 1 NF 2,5 | 2222 630 51 102 | * 1 NF 2,5 | 2222 630 51 102 COGECO | 1 |
| C -003 | 3120021000 | 1 NF 2,5 | 2222 630 51 102 | * 1 NF 2,5 | 2222 630 51 102 COGECO | 1 |
| D -001 | 4500310000 | 1 N 4448 | | * 1 N 4448 | ITT | 1 |
| D -002 | 4500310000 | 1 N 4448 | | * 1 N 4448 | ITT | 1 |
| D -003 | 4500310000 | 1 N 4448 | | * 1 N 4448 | ITT | 1 |
| R -001 | 2609144400 | 144R4 0,25% 50PPM | REF H10 | * 144R4 0,25% 50PPM | REF H10 HOLCO | 1 |
| R -002 | 2609106600 | 106R6 0,25% 50PPM | REF H10 | * 106R6 0,25% 50PPM | REF H10 HOLCO | 1 |
| R -003 | 2609144400 | 144R4 0,25% 50PPM | REF H10 | * 144R4 0,25% 50PPM | REF H10 HOLCO | 1 |
| R -004 | 2608916000 | 91R6 0,25% 50PPM | REF H10 | * 91R6 0,25% 50PPM | REF H10 HOLCO | 1 |
| R -005 | 2683712500 | 371.25 0,1% 25PPM | AUL | * 371.25 0,1% 25PPM | AUL GEKA | 1 |
| R -006 | 2608916000 | 91R6 0,25% 50PPM | REF H10 | * 91R6 0,25% 50PPM | REF H10 HOLCO | 1 |
| R -007 | 2608765000 | 76R5 0,25% 50PPM | REF H10 | * 76R5 0,25% 50PPM | REF H10 HOLCO | 1 |
| R -008 | 2693750000 | 3K75 0,1% 25PPM | AUL | * 3K75 0,1% 25PPM | AUL GEKA | 1 |
| R -009 | 2608765000 | 76R5 0,25% 50PPM | REF H10 | * 76R5 0,25% 50PPM | REF H10 HOLCO | 1 |
| R -010 | 2500924900 | 24R9 * 1% 0,3 U | SMA207 | * 24R9 * 1% 0,3 U | SMA207 DRALORIC | 1 |
| Z1 | 1100020000 | FIL MARRON | KY30-04 | * BROWN THREAD | KY30-04 FILECA | 0 |
| Z1 | 1100060000 | FIL VERT | KY30-04 | * GREEN THREAD | KY30-04 FILECA | 0 |
| Z1 | 1100090000 | FIL GRIS | KY30-04 | * GREY THREAD | KY30-04 FILECA | 0 |
| Z1 | 1100430000 | COAX KX 21 A | | * COAX KX 21 A | FILECA | 0 |
| Z1 | 1269110200 | CI ATTENUATEUR | 2230A | * PC ATTENUATOR | 2230A F996911.....SF | 1 |
| Z6 | 6400280000 | PLOT A FOURCHE SOUDE | BFMQ13C | * SOLDERED FORK CONTACT | BFMQ13C COMATEL | 2 |

| REPERE INDEXE | REF. ADRET PART NUMBER | DESCRIPTION | PART DESCRIPTION | FOURNISSEUR/PLAN SUPPLIER/DRAWING | QTE QTY |
|------------------|---------------------------|--------------------------------|----------------------------------|--------------------------------------|------------|
| C -001 | 3700180000 | 22MMF/16V 5,08 ... STAND L TAG | * 22MMF/16V 5,08 ... STAND L TAG | STC | 1 |
| C -002 | 3700180000 | 22MMF/16V 5,08 ... STAND L TAG | * 22MMF/16V 5,08 ... STAND L TAG | STC | 1 |
| C -003 | 3700020000 | 1MMF/35V 5,08 ... STAND L TAG | * 1MMF/35V 5,08 ... STAND L TAG | STC | 1 |
| C -004 | 3700020000 | 1MMF/35V 5,08 ... STAND L TAG | * 1MMF/35V 5,08 ... STAND L TAG | STC | 1 |
| C -005 | 3120001800 | 18PF 2,5 'J' 2222 680 10 189 | * 18PF 2,5 'J' 2222 680 10 189 | COGECO | 1 |
| C -006 | 3150031000 | 10NF 5,08 63V GOX 767 14 | * 10NF 5,08 63V GOX 767 14 | LCC | 1 |
| C -007 | 3700180000 | 22MMF/16V 5,08 ... STAND L TAG | * 22MMF/16V 5,08 ... STAND L TAG | STC | 1 |
| C -008 | 3234100000 | 0,1MMF 10(10X250V)222236845104 | * 0,1MMF 10(10X250V)222236845104 | COGECO | 1 |
| C -009 | 3234100000 | 0,1MMF 10(10X250V)222236845104 | * 0,1MMF 10(10X250V)222236845104 | COGECO | 1 |
| C -010 | 3232330000 | 3300PF 10(10X400V)222236855332 | * 3300PF 10(10X400V)222236855332 | COGECO | 1 |
| C -011 | 3120095600 | 5,6PF 2,5'C' 2222 680 09 568 | * 5,6PF 2,5'C' 2222 680 09 568 | COGECO | 1 |
| D -001 | 4500310000 | 1 N 4448 | * 1 N 4448 | ITT | 1 |
| D -002 | 4500310000 | 1 N 4448 | * 1 N 4448 | ITT | 1 |
| Q -001 | 4300190000 | BC550C /414C/413C/549C(BC184C) | * BC550C /414C/413C/549C(BC184C) | RTC | 1 |
| Q -002 | 4800060000 | 2N2219 | * 2N2219 | RTC | 1 |
| Q -003 | 4800080000 | 2N2905 | * 2N2905 | RTC | 1 |
| R -001 | 2500975000 | 75R0 * 1X 0,3 W SMA207 | * 75R0 * 1X 0,3 W SMA207 | DRALORIC | 1 |
| R -002 | 2210013300 | 330R 5X N4 | * 330R 5X N4 | SOVCOR | 1 |
| R -003 | 2500052300 | 523R * 1X 0,3 W SMA207 | * 523R * 1X 0,3 W SMA207 | DRALORIC | 1 |
| R -004 | 2500110000 | 1K00 * 1X 0,3 W SMA207 | * 1K00 * 1X 0,3 W SMA207 | DRALORIC | 1 |
| R -005 | 2210031500 | 15K 5X N4 | * 15K 5X N4 | SOVCOR | 1 |
| R -006 | 2210011000 | 100R 5X N4 | * 100R 5X N4 | SOVCOR | 1 |
| R -007 | 2210011000 | 100R 5X N4 | * 100R 5X N4 | SOVCOR | 1 |
| R -008 | 2210004700 | 47R 5X N4 | * 47R 5X N4 | SOVCOR | 1 |
| R -009 | 2210015600 | 560R 5X N4 | * 560R 5X N4 | SOVCOR | 1 |
| R -010 | 2210024700 | 4K7 5X N4 | * 4K7 5X N4 | SOVCOR | 1 |
| R -011 | 2210033900 | 39K 5X N4 | * 39K 5X N4 | SOVCOR | 1 |
| R -012 | 2210032200 | 22K 5X N4 | * 22K 5X N4 | SOVCOR | 1 |
| R -013 | 2210032200 | 22K 5X N4 | * 22K 5X N4 | SOVCOR | 1 |
| R -014 | 2210032200 | 22K 5X N4 | * 22K 5X N4 | SOVCOR | 1 |
| R -015 | 2300092200 | 2R2 SFR 25 1/4W 5X RC2T | * 2R2 SFR 25 1/4W 5X RC2T | RTC | 1 |
| R -016 | 2300092200 | 2R2 SFR 25 1/4W 5X RC2T | * 2R2 SFR 25 1/4W 5X RC2T | RTC | 1 |
| R -017 | 2500146400 | 4K64 * 1X 0,3 W SMA207 | * 4K64 * 1X 0,3 W SMA207 | DRALORIC | 1 |
| R -018 | 2500146400 | 4K64 * 1X 0,3 W SMA207 | * 4K64 * 1X 0,3 W SMA207 | DRALORIC | 1 |
| R -019 | 2500049900 | 499R * 1X 0,3 W SMA207 | * 499R * 1X 0,3 W SMA207 | DRALORIC | 1 |
| R -020 | 2500924900 | 24R9 * 1X 0,3 W SMA207 | * 24R9 * 1X 0,3 W SMA207 | DRALORIC | 1 |
| R -021 | 2210031000 | 10K 5X N4 | * 10K 5X N4 | SOVCOR | 1 |
| R -022 | 2210038200 | 82K 5X N4 | * 82K 5X N4 | SOVCOR | 1 |
| R -023 | 2500973200 | 73R2 * 1X 0,3 W SMA207 | * 73R2 * 1X 0,3 W SMA207 | DRALORIC | 1 |
| R -024 | 2500973200 | 73R2 * 1X 0,3 W SMA207 | * 73R2 * 1X 0,3 W SMA207 | DRALORIC | 1 |
| R -025 | 2500029400 | 294R * 1X 0,3 W SMA207 | * 294R * 1X 0,3 W SMA207 | DRALORIC | 1 |
| R -026 | 2500029400 | 294R * 1X 0,3 W SMA207 | * 294R * 1X 0,3 W SMA207 | DRALORIC | 1 |
| SN -001 | 4200330000 | LM 318 N B+ * NS | * LM 318 N B+ * NS | NS | 1 |
| SN -002 | 4200090000 | LM 741 CN B+ . DIP 8 PATTES | * LM 741 CN B+ . DIP 8 PINS | NS | 1 |
| Z1 | 1100010000 | FIL NOIR KY30-04 | * BLACK THREAD KY30-04 | FILECA | 0 |
| Z1 | 1100030000 | FIL ROUGE KY30-04 | * RED THREAD KY30-04 | FILECA | 0 |
| Z1 | 1100070000 | FIL BLEU KY30-04 | * BLUE THREAD KY30-04 | FILECA | 0 |
| Z1 | 1100430000 | COAX KX 21 A | * COAX KX 21 A | FILECA | 0 |
| Z1 | 1100530000 | FIL.NJ.ETAME.6/10 | * TINNED BARE THREAD 6/10 | ELECTROFIL | 0 |
| Z1 | 1269120500 | CI AMPLI 2230A | * PC AMPLI 2230A | K996912.....TM | 1 |
| Z1 | 1300590000 | SOUPLISSO 0,6X0,9 COUL.NATUREL | * SPAGHETTI 0.6X0.9 GRAY COLORED | HABIA | 0 |
| Z4 | 4900060000 | DISSIPATEUR T05-204 | * DISSIPATOR T05-204 | JERMYN | 2 |
| Z4 | 4900070000 | ENTRETOISE T05 T05-001 | * SPACER T05 T05-001 | JERMYN | 2 |
| Z5 | 5500110000 | TUBE B30 GT 4,1X2X12,5 | * TUBE B30 GT 4,1X2X12,5 | COFELEC | 1 |
| Z6 | 6400080000 | RIVET D 1,5 L 2,4 XC 42 | * RIVET D 1.5 L 2.4 XC 42 | MFOH | 1 |

*0270080300 02 CHASSIS EQUIPE Z0 ... 2230A * 02 FITTED CHASSIS Z0 ... 2230A J910214..... *

| REPERE INDEXE | REF. ADRET PART NUMBER | DESCRIPTION | PART DESCRIPTION | FOURNISSEUR/PLAN SUPPLIER/DRAWING | QTE QTY |
|---------------|------------------------|----------------------------------|--|-----------------------------------|---------|
| 001 | 0269150100 | 07 PORTEUR EQUIPE | 2230A * 07 FITTED MOTHER BD | 2230A B920953.A976915 | 1 |
| 001 | 0270110000 | 08 PLAQUE AVANT MONTEE .. | 2230A * 08 ASSEM. FRONT PLATE .. | 2230A L920934..... | 1 |
| 001 | 0270940000 | 01 AMPLI Z=0 | 2230A * 01 AMPLI Z=0 | 2230A E932549.A977094 | 1 |
| Z0 | 0270130000 | 03 NATTE 26'171'177'L140 | 2230 * 03 FLAT-T.26'171'177'L140 | 2230 ADRET..... | 1 |
| Z0 | 0271050000 | 03 NATTE 26'171'177'L190 | 2230 * 03 FLAT-T.26'171'177'L190 | 2230 ADRET..... | 1 |
| Z1 | 1000270000 | ALIMENTATION | 2230A * POWER SUPPLY | 2230A E932214..... | 1 |
| Z1 | 1100010000 | FIL NOIR | KY30-04 * BLACK THREAD | KY30-04 FILECA | 0 |
| Z1 | 1100020000 | FIL MARRON | KY30-04 * BROWN THREAD | KY30-04 FILECA | 0 |
| Z1 | 1100030000 | FIL ROUGE | KY30-04 * RED THREAD | KY30-04 FILECA | 0 |
| Z1 | 1100040000 | FIL ORANGE | KY30-04 * ORANGE THREAD | KY30-04 FILECA | 0 |
| Z1 | 1100060000 | FIL VERT | KY30-04 * GREEN THREAD | KY30-04 FILECA | 0 |
| Z1 | 1100070000 | FIL BLEU | KY30-04 * BLUE THREAD | KY30-04 FILECA | 0 |
| Z1 | 1100080000 | FIL VIOLET | KY30-04 * PURPLE THREAD | KY30-04 FILECA | 0 |
| Z1 | 1100090000 | FIL GRIS | KY30-04 * GREY THREAD | KY30-04 FILECA | 0 |
| Z1 | 1100430000 | COAX KX 21 A | * COAX KX 21 A | FILECA | 1 |
| Z1 | 1100440000 | CABLE BLINDE GRIS | FMA2R * GREY ARMORED CABLE | FMA2R FILECA | 0 |
| Z1 | 1100450000 | CABLE BLINDE GRIS | FMA4R * GREY ARMORED CABLE | FMA4R FILECA | 0 |
| Z1 | 1100520000 | FIL NU. ETAME. 4/10 | * TINNED BARE THREAD 4/10 | ELECTROFIL | 0 |
| Z1 | 1100950000 | VERT/JAUNE .. HO7-U-K(1X1.5ET) | * GREEN/YELLOW HO7-U-K(1X1.5ET) | FILECA | 1 |
| Z1 | 1300080000 | COLLIER | REF H3P * COLLAR | REF H3P HELLERMANN | 1 |
| Z1 | 1300090000 | COLLIER | REF H4P * COLLAR | REF H4P HELLERMANN | 3 |
| Z1 | 1300450000 | GAINE F4,8 FP301 3/16 .. | SFM 48 * SHEATH F4.8 FP301 3/16 .. | SFM 48 HELLERMANN | 0 |
| Z1 | 1300460000 | GAINE F6,4 FP301 1/4 .. | SFM 64 * SHEATH F6.4 FP301 1/4 .. | SFM 64 HELLERMANN | 0 |
| Z1 | 1300540000 | LACING | REF T2 UP NOIR * LACING | REF T2 UP NOIR HELLERMANN | 1 |
| Z1 | 1300590000 | SOUPLISSO 0.6X0.9 COUL. NATUREL | * SPAGHETTI 0.6X0.9 GRAY COLORED | HABIA | 5 |
| Z1 | 1400200500 | BNC EMBASE 'FEMEL' ECRou R141557 | * BNC FEMALE SOCKET NUT R141557 | RADIALL | 0 |
| Z1 | 1405000900 | EMBASE DIN ... LUMBERG REF B51 | * DIN SOCKET ... LUMBERG REF B51 | LIENARD SOVAL | 1 |
| Z1 | 1410007700 | TB 10 F | FEMELLE * TB 10 F | FEMALE TREClec | 1 |
| Z1 | 1530202000 | INVERSEUR REF:0391584-710 NOIR | * REVERSER REF:0391584-710 BLACK | METALLO | 1 |
| Z1 | 1530208400 | INVERSEUR ... REF:039-1584-110 | * REVERSER ... REF:039-1584-110 | METALLO | 1 |
| Z1 | 1700340000 | FILTRE 220V+NEUTRE 3A P. EUROPE | * FILTER 220V+NEUTRAL 3A P. EUROPE | EUROPAVIA | 1 |
| Z1 | 1710003900 | PORTE FUSIBLE D5406 031-1603 | * FUSE BLOCK D5406 031-1603 | ARNOULD | 1 |
| Z1 | 1710004000 | TETE 6.3X32(17100039) 031-1613 | * HEAD 6.3X32(17100039) 031-1613 | ARNOULD | 1 |
| Z1 | 1720004900 | 160MA | FST6332 034-3409 * 160MA | FST6332 034-3409 ARNOULD | 1 |
| Z1 | 1900180000 | GUIDE CARTE ANTIUIBR. REF R221 | * BOARD GUIDE | REF R221 TREClec | 10 |
| Z4 | 4200220000 | 7806 UC REGUL.6V/1A | T0220 * 7806 UC REGUL.6V/1A | T0220 FAIRCHILD | 1 |
| Z4 | 4200280000 | 7812 UC REGUL.12V/1A TO 220 | * 7812 UC REGUL.12V/1A TO 220 | FAIRCHILD | 1 |
| Z4 | 4200290000 | MC 7912 CP REGUL.-12V/1A T0220 | * MC 7912 CP REGUL.-12V/1A T0220 | MOTOROLA | 1 |
| Z4 | 4500310000 | I N 4448 | * I N 4448 | ITT | 1 |
| Z4 | 4900130000 | CALE TO 220 REF:AY537-490537 | * MICA QUIN FOR TO 220 REF C75 | GETELEC | 3 |
| Z4 | 4900220000 | CANON ISOLANT TO 220 EPAUL.3,5 | * INSULATING CANNON 220 EP. 3.5 | MOTOROLA | 3 |
| Z5 | 5500110000 | TUBE B30 GT 4.1X2X12.5 | * TUBE B30 GT 4.1X2X12.5 | COFELEC | 7 |
| Z6 | 6100030600 | TCB M3X 6 U DIN7985-4,8 INOX | * TCB M3X 6 U DIN7985-4,8 INOX | BD | 20 |
| Z6 | 6100030800 | TCB M3X 8 U DIN7985-4,8 INOX | * TCB M3X 8 U DIN7985-4,8 INOX | BD | 14 |
| Z6 | 6100031200 | TCB M3X12 U DIN7985-4,8 INOX | * TCB M3X12 U DIN7985-4,8 INOX | BD | 6 |
| Z6 | 6101032000 | TF/90 M3X20 U DIN965-4,8 INOX | * TF/90 M3X20 U DIN965-4,8 INOX | BD | 3 |
| Z6 | 6101040600 | ACF 4 X 6 FRAISEE F/90 CRUCIF | * ACF 4 X 6 FRAISEE F/90 CRUCIF | SAGIC | 4 |
| Z6 | 6107020600 | TCL 2.2X6.5 POINT.DIN7981BINOX | * TCL 2.2X6.5 NIBBL.DIN7981BINOX | BD | 6 |
| Z6 | 6200030000 | ECROU H M3 U NF E27-411-5 INOX | * NUT H M3 U NF E27-411-5 INOX | BD | 11 |
| Z6 | 6300030000 | Z 3U (6X0,8) NF E27-611 INOX | * Z 3U (6X0,8) NF E27-611 INOX | BD | 3 |
| Z6 | 6300030100 | M 3U (8X0,8) NF E27-611 INOX | * INOX M3 X 8X0.8 FLAT ... | MEAN BD | 8 |
| Z6 | 6305030000 | ACI 3 CONTACT REF 55-03-01 | * STEEL 3 CONTACT REF 55-03-01 | NOMEL | 8 |
| Z6 | 6400040000 | RIVET D 3 L 5 REF 3050 | * RIVET D 3 L 5 REF 3050 | MFOM | 4 |
| Z6 | 6400160000 | COSSE A SOUDER 3,2 | 519 * SOLDERING TERMINAL 3.2 ... | 519 MFOM | 1 |
| Z6 | 6400350000 | COSSE A SOUDER | 2003E * SOLDERING TERMINAL | 2003E MFOM | 5 |
| Z6 | 6400510000 | EQUERRE 10X10 LARG 10 EP 1 | * ANGLEBRACKET10X10 WIDTH10 EP 1 | A943051 | 4 |
| Z6 | 6400540000 | RIVET POP 2,4 L 5 ALU AD32-ABS | * POP RIVET 2.4 L 5 ALU AD32-ABS | MFOM | 24 |
| Z6 | 6400780000 | RIVET D 20 L 4 | * RIVET D 20 L 4 | MFOM | 20 |
| Z8 | 8006703600 | PANNEAU ARRIERE 1MHZ ... 2230A | * 1MHZ REAR PANEL | 2230A E932706.B932451 | 1 |
| Z8 | 8006710100 | CLOISON DE CARTE | 2230A * BOARD DIVISION | 2230A A932170 | 3 |
| Z8 | 8006721600 | GLISSIERE HABILLAGE | 2230A * LAGGING SLIDEWAY | 2230A C932358 | 2 |
| Z8 | 8006722900 | RADIATEUR CARRE 12 | 2230A * SQUARE 12 DISSIPATOR ... | 2230A A942290 | 1 |
| Z8 | 8106711300 | FLASQUE LAT. CHASSIS ... 2230A | * CHASSIS LAT. FLASK | 2230A F920846 | 2 |

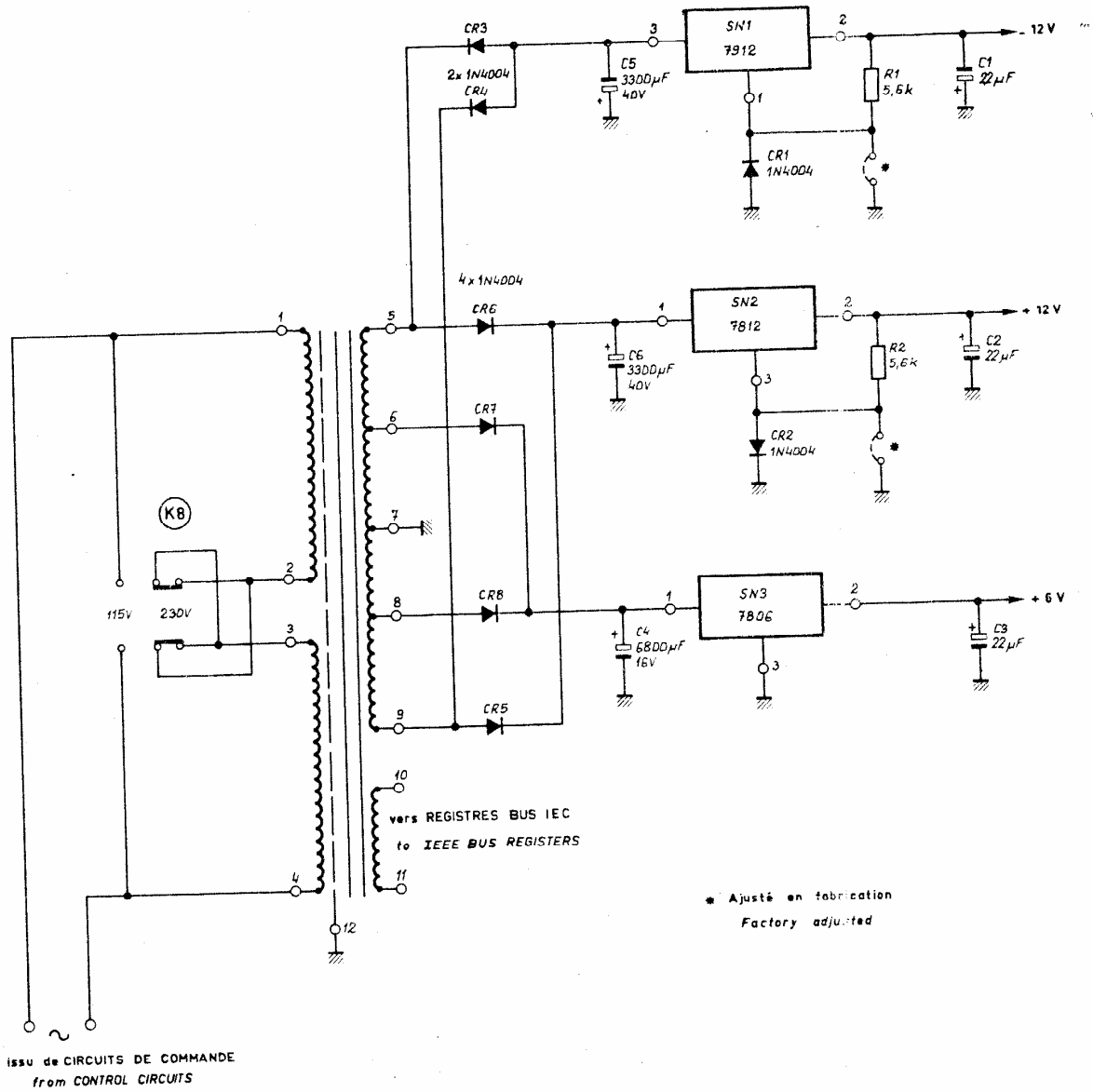


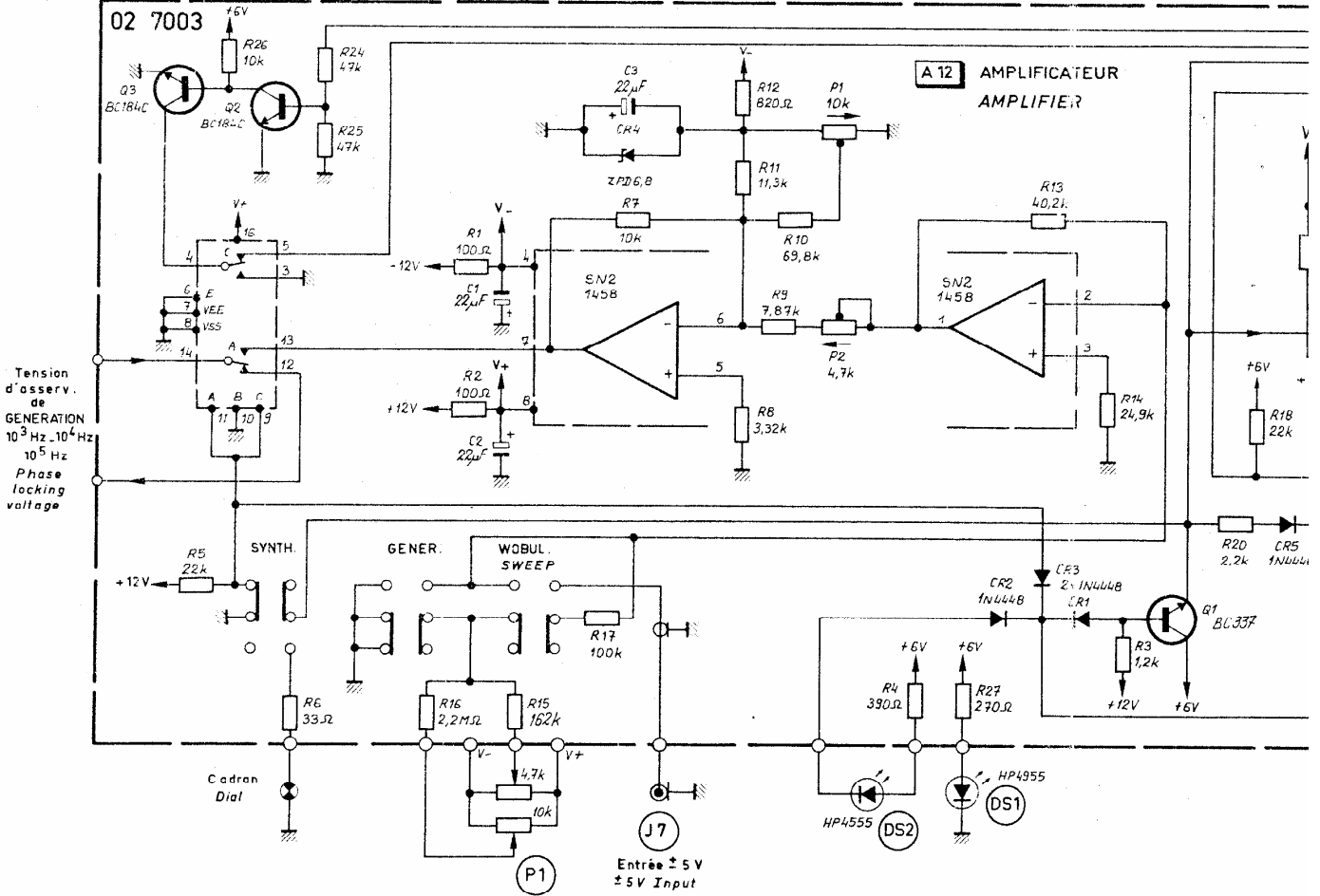
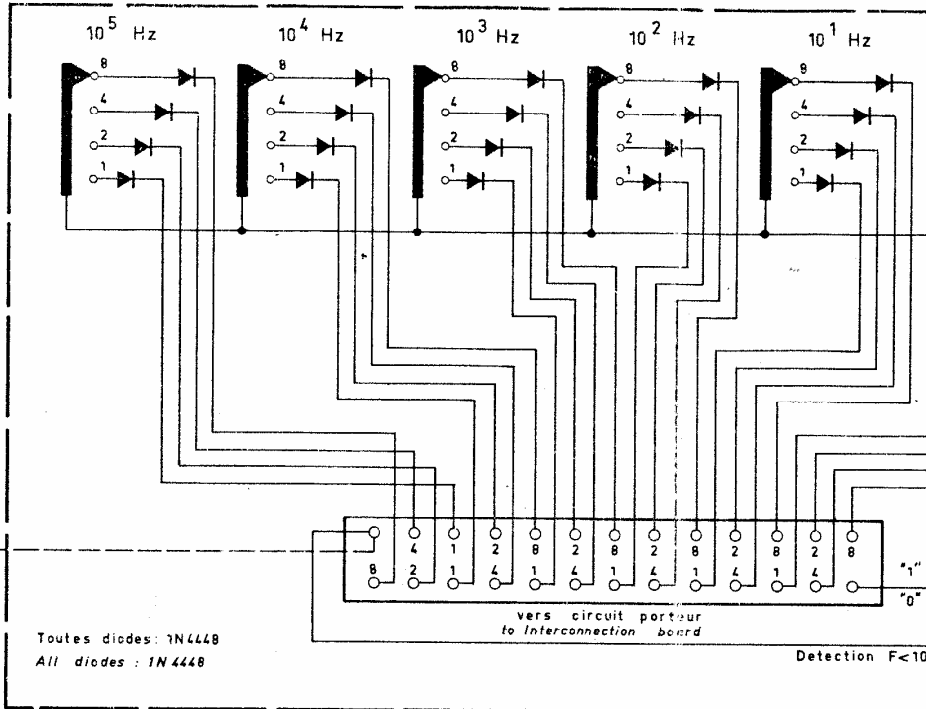
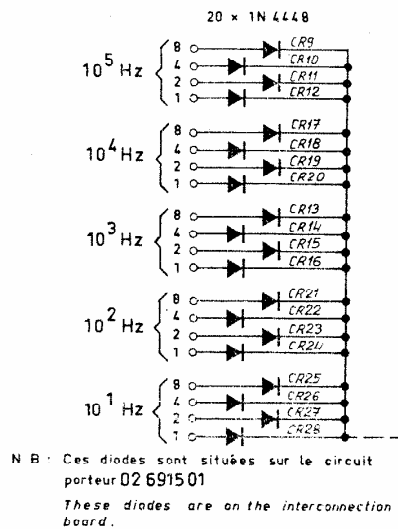
PLATE V-8
PLANCHE V-8

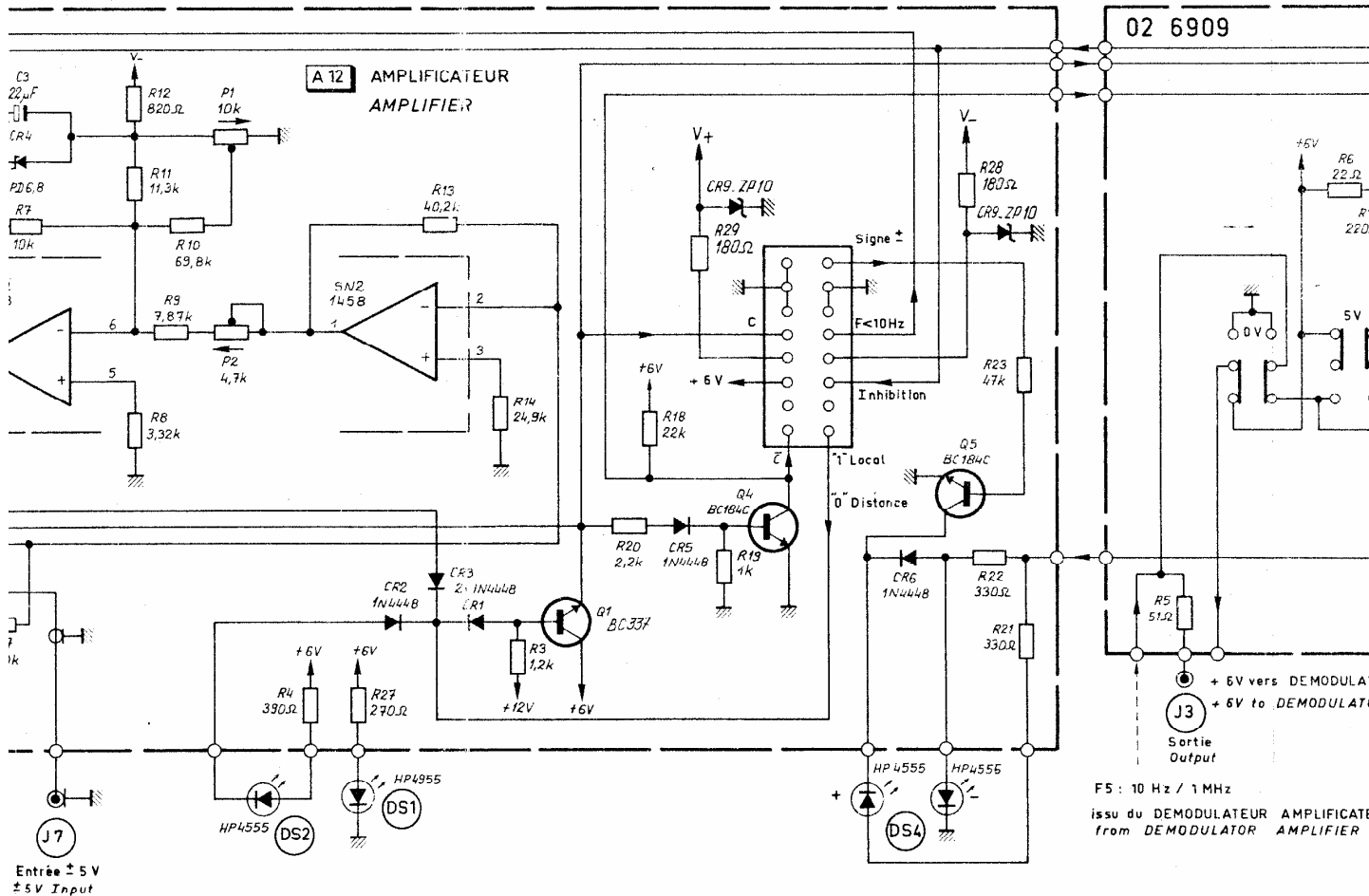
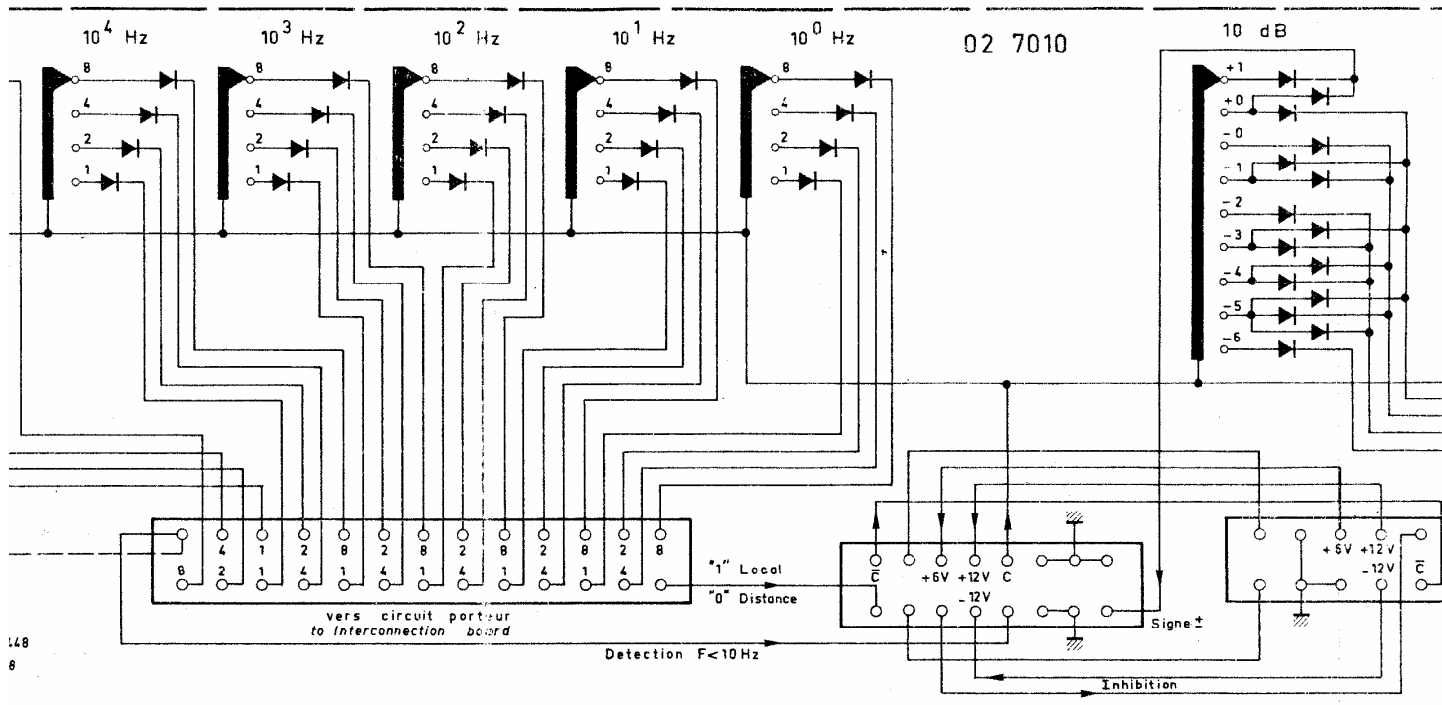
| | | | | | |
|--|---------|---------|--|--|--------------------|
| Le dessinateur se porte responsable de l'exactitude des données | | | edrat électronique | | DATE: JUILLET 1978 |
| ETUDIE | DESSINE | VERIFIE | 2230 A ALIMENTATION POWER SUPPLY | | PAGE: 1 / 1 |
| ACORT | H.K. | | | | 976915A |

| REPERE INDEXE | REF. ADRET PART NUMBER | DESCRIPTION | PART DESCRIPTION | FOURNISSEUR/PLAN SUPPLIER/DRAWING | QTE QTY |
|---------------|------------------------|--------------------------------|----------------------------------|-----------------------------------|---------|
| C -001 | 3700180000 | 22MMF/16V 5,08 ... STAND L TAG | * 22MMF/16V 5,08 ... STAND L TAG | STC | 1 |
| C -002 | 3700180000 | 22MMF/16V 5,08 ... STAND L TAG | * 22MMF/16V 5,08 ... STAND L TAG | STC | 1 |
| C -003 | 3700180000 | 22MMF/16V 5,08 ... STAND L TAG | * 22MMF/16V 5,08 ... STAND L TAG | STC | 1 |
| C -004 | 3500430000 | 6800MMF 16V RELSIC 033 | * 6800MMF 16V RELSIC 033 | SIC SAFCO | 1 |
| C -005 | 3500440000 | 3300MMF 40V RELSIC 033 | * 3300MMF 40V RELSIC 033 | SIC SAFCO | 1 |
| C -006 | 3500440000 | 3300MMF 40V RELSIC 033 | * 3300MMF 40V RELSIC 033 | SIC SAFCO | 1 |
| D -001 | 4500040000 | 1N4004 | * 1N4004 | ITT | 1 |
| D -002 | 4500040000 | 1N4004 | * 1N4004 | ITT | 1 |
| D -003 | 4500040000 | 1N4004 | * 1N4004 | ITT | 1 |
| D -004 | 4500040000 | 1N4004 | * 1N4004 | ITT | 1 |
| D -005 | 4500040000 | 1N4004 | * 1N4004 | ITT | 1 |
| D -006 | 4500040000 | 1N4004 | * 1N4004 | ITT | 1 |
| D -007 | 4500040000 | 1N4004 | * 1N4004 | ITT | 1 |
| D -008 | 4500040000 | 1N4004 | * 1N4004 | ITT | 1 |
| D -009 | 4500310000 | 1 N 4448 | * 1 N 4448 | ITT | 1 |
| D -010 | 4500310000 | 1 N 4448 | * 1 N 4448 | ITT | 1 |
| D -011 | 4500310000 | 1 N 4448 | * 1 N 4448 | ITT | 1 |
| D -012 | 4500310000 | 1 N 4448 | * 1 N 4448 | ITT | 1 |
| D -013 | 4500310000 | 1 N 4448 | * 1 N 4448 | ITT | 1 |
| D -014 | 4500310000 | 1 N 4448 | * 1 N 4448 | ITT | 1 |
| D -015 | 4500310000 | 1 N 4448 | * 1 N 4448 | ITT | 1 |
| D -016 | 4500310000 | 1 N 4448 | * 1 N 4448 | ITT | 1 |
| D -017 | 4500310000 | 1 N 4448 | * 1 N 4448 | ITT | 1 |
| D -018 | 4500310000 | 1 N 4448 | * 1 N 4448 | ITT | 1 |
| D -019 | 4500310000 | 1 N 4448 | * 1 N 4448 | ITT | 1 |
| D -020 | 4500310000 | 1 N 4448 | * 1 N 4448 | ITT | 1 |
| D -021 | 4500310000 | 1 N 4448 | * 1 N 4448 | ITT | 1 |
| D -022 | 4500310000 | 1 N 4448 | * 1 N 4448 | ITT | 1 |
| D -023 | 4500310000 | 1 N 4448 | * 1 N 4448 | ITT | 1 |
| D -024 | 4500310000 | 1 N 4448 | * 1 N 4448 | ITT | 1 |
| D -025 | 4500310000 | 1 N 4448 | * 1 N 4448 | ITT | 1 |
| D -026 | 4500310000 | 1 N 4448 | * 1 N 4448 | ITT | 1 |
| D -027 | 4500310000 | 1 N 4448 | * 1 N 4448 | ITT | 1 |
| D -028 | 4500310000 | 1 N 4448 | * 1 N 4448 | ITT | 1 |
| R -001 | 2210025600 | 5K6 5% N4 | * 5K6 5% N4 | SOUCOR | 1 |
| R -002 | 2210025600 | 5K6 5% N4 | * 5K6 5% N4 | SOUCOR | 1 |
| Z1 | 1100520000 | FIL.NU.ETAME.4/10 | * TINNED BARE THREAD 4/10 | ELECTROFIL | 0 |
| Z1 | 1100540000 | FIL.NU.ETAME.8/10 | * TINNED BARE THREAD 8/10 | ELECTROFIL | 0 |
| Z1 | 1269150600 | CI PORTEUR 2230A | * PC MOTHER 2230A | E996915 | 1 |
| Z1 | 1300950000 | EMBASE (TY-RAP) .. REF LPMM-S5 | * SOCKET (TY-RAP) .. REF LPMM-S5 | PANDUIT | 3 |
| Z1 | 1300960000 | TY-RAP L 142MM REF PLT 1.5M | * TY-RAP L 142MM REF PLT 1.5M | PANDUIT | 3 |
| Z1 | 1417030000 | 17PTS .EMEL. 6823-17-64-14-335 | * 17PTS .EMEL. 6823-17-64-14-335 | SOURIAU | 1 |
| Z1 | 1423029600 | 23PTS FEMEL. 8623-23-64-14-335 | * 23PTS FEMAL. 8623-23-64-14-335 | SOURIAU | 1 |
| Z1 | 1427030100 | 27PTS FEMEL. 8623-27-64-14-335 | * 27PTS FEMALE 8623-27-64-14-335 | SOURIAU | 3 |
| Z1 | 1435030200 | 35PTS FEMEL. 8623-35-64-14-335 | * 35PTS FEMALE 8623-35-64-14-335 | SOURIAU | 1 |
| Z6 | 6400020000 | RIVET D 2.2 L 3.7 2237..2035 | * RIVET D 2.2 L 3.7 2237..2035 | MFOM | 7 |
| Z6 | 6400030000 | RIVET D 3 L 4.2 3042 | * RIVET D 3 L 4.2 3042 | MFOM | 3 |
| Z6 | 6400060000 | RIVET D 1.2 L 2.4 XC 39 | * RIVET D 1.2 L 2.4 XC 39 | MFOM | 8 |
| Z6 | 6400270000 | PLOT A FOURCHE SERTI BFM13-16 | * SQUEEZED FORK CONTACT BFM13-16 | COMATEL | 7 |
| Z6 | 6400280000 | PLOT A FOURCHE SOUDE . BFMQ13C | * SOLDERED FORK CONTACT BFMQ13C | COMATEL | 13 |

| REPERE INDEXE | REF. ADRET PART NUMBER | DESCRIPTION | PART DESCRIPTION | FOURNISSEUR/PLAN SUPPLIER/DRAWING | QTE QTY |
|---------------|------------------------|----------------------------------|--------------------------------------|-----------------------------------|---------|
| 001 | 0269090000 | 03 COMMUTATEUR TTL 2230A | * 03 TTL SWITCH | 2230A D932366..... | 1 |
| 001 | 0270030100 | 09 COMMUTATEUR MODE 2230A | * 09 MODE SWITCH | 2230A J932523.B977003 | 1 |
| 001 | 0270100000 | 04 BLOC ROUES CODEES ... 2230A | * 04 SPIN WHEELS BLOCK ... | 2230A D920933..... | 1 |
| Z0 | 0206500000 | 00 NATTE 16'137''137'L190 | * 00 FLAT-TOP 16'137''137'L190 | ADRET..... | 1 |
| Z1 | 1100010000 | FIL NOIR KY30-04 | * BLACK THREAD | KY30-04 FILECA | 0 |
| Z1 | 1100020000 | FIL MARRON KY30-04 | * BROWN THREAD | KY30-04 FILECA | 0 |
| Z1 | 1100030000 | FIL ROUGE KY30-04 | * RED THREAD | KY30-04 FILECA | 0 |
| Z1 | 1100040000 | FIL ORANGE KY30-04 | * ORANGE THREAD | KY30-04 FILECA | 0 |
| Z1 | 1100050000 | FIL JAUNE KY30-04 | * YELLOW THREAD | KY30-04 FILECA | 0 |
| Z1 | 1100060000 | FIL VERT KY30-04 | * GREEN THREAD | KY30-04 FILECA | 0 |
| Z1 | 1100070000 | FIL BLEU KY30-04 | * BLUE THREAD | KY30-04 FILECA | 0 |
| Z1 | 1100080000 | FIL VIOLET KY30-04 | * PURPLE THREAD | KY30-04 FILECA | 0 |
| Z1 | 1100090000 | FIL GRIS KY30-04 | * GREY THREAD | KY30-04 FILECA | 0 |
| Z1 | 1100100000 | FIL BLANC KY30-04 | * WHITE THREAD | KY30-04 FILECA | 0 |
| Z1 | 1100110000 | FIL ROSE KY30-04 | * PINK THREAD | KY30-04 FILECA | 0 |
| Z1 | 1100400000 | CABLE BLINDE GRISFMA2R | * GREY ARMORED CABLE | FMA2R FILECA | 0 |
| Z1 | 1100530000 | FIL NU. ETAME. 6/10 | * TINNED BARE THREAD 6/10 | ELECTROFIL | 0 |
| Z1 | 1300050000 | RELAIS REF 1072 K | * RELAYS | REF 1072 K ATI | 1 |
| Z1 | 1300450000 | GAINÉ F4,8 FP301 3/16 . SFM 48 | * SHEATH F4.8 FP301 3/16 . SFM 48 | HELLERMANN | 0 |
| Z1 | 1300460000 | GAINÉ F6,4 FP301 1/4 . SFM 64 | * SHEATH F6.4 FP301 1/4 . SFM 64 | HELLERMANN | 0 |
| Z1 | 1300590000 | SOUPLISSÉ 0,6X0,9 COUL. NATUREL | * SPAGHETTI 0.6X0.9 GRAY COLORED | HABIA | 0 |
| Z1 | 1400290500 | BNC EMBASE 'FEMEL' ECROU R141557 | * BNC FEMALE SOCKET NUT R141557 | RADIALL | 1 |
| Z1 | 1700020000 | LUCIOLE M.MIDJET AN643 5U/75MA | * BRIGHT FIREFLY .AN643 5U/75MA | MAZDA | 1 |
| Z2 | 2122500500 | 4K7/10K LIN PK16-DCS 3X32+6X16 | * 4K7/10K LIN PK16-DCS 3X32+6X16 | MCB COUPER 3X26 | 1 |
| Z4 | 4000010000 | LED ROUGE '5' ... REF CQV 20-4 | * RED LED '5' | REF CQV 20-4 SIEMENS | 2 |
| Z4 | 4000060000 | LED VERTE '5' ... REF CQV 25-6 | * GREEN LED '5' ... REF CQV 25-6 | SIEMENS | 1 |
| Z4 | 4000070000 | LED JAUNE '5' ... REF CQV 23-6 | * YELLOW LED '5' ... REF CQV 23-6 | SIEMENS | 3 |
| Z4 | 4000140000 | LED 5 SUPPORT REF HLHP-0103 | * BASE 5 LED | REF HLHP-0103 HP | 6 |
| Z4 | 4900180000 | BRIDE DIP-LOCK CA 16 200 DL | * BRIDLE DIP-LOCK CA 16 200 DL | EUROPAUTA | 1 |
| Z5 | 5500110000 | TUBE B30 GT 4,1X2X12,5 | * TUBE B30 GT 4.1X2X12.5 | COFELEC | 1 |
| Z6 | 6101031200 | TF/90 M3X12 U DIN965-4,8 INOX | * TF/90 M3X12 U DIN965-4,8 INOX | BD | 4 |
| Z6 | 6101110400 | TF M2,5X 4 U NFE27-113-5,6INOX | * TF M2,5X 4 U NFE27-113-5,6INOX | BD | 1 |
| Z6 | 6131120600 | LAD 2 X 6 FRAISEE F/90 FENDUE | * LAD 2 X 6 FRAISEE F/90 FENDUE | SAGIC | 10 |
| Z6 | 6200020000 | ECROU H M2 U NF E27-411-5 INOX | * NUT H M2 U NF E27-411-5 INOX | BD | 8 |
| Z6 | 6200030000 | ECROU H M3 U NF E27-411-5 INOX | * NUT H M3 U NF E27-411-5 INOX | BD | 4 |
| Z6 | 6301020000 | DI 2 EVENTAIL NFE 27-618 INOX | * STEEL 2 FAN NFE 27-618 INOX | BD | 8 |
| Z6 | 6305030000 | ACI 3 CONTACT REF 55-03-01 | * STEEL 3 CONTACT REF 55-03-01 | NOMEL | 4 |
| Z6 | 6360011000 | BAK 2,6X 5X 1 PLATE 100A | * BAK 2.6X 5X 1 PLATE 100A | MFOM | 1 |
| Z6 | 6400160000 | COSSE A SOUDER 3,2 519 | * SOLDERING TERMINAL 3.2 ... 519 | MFOM | 1 |
| Z6 | 6400350000 | COSSE A SOUDER 2003E | * SOLDERING TERMINAL 2003E | MFOM | 1 |
| Z6 | 6701240000 | ENLIS 2 L 4 | * ENLIS 2 L 4 | ACCEL | 4 |
| Z6 | 6900300000 | SCOTCH ELECTRIQUE 19MM REF 33 | * ELECTRICAL SCOTCH 19MM REF 33 | 3M | 0 |
| Z6 | 6900320000 | COLLE CYANILIT.....REF:IS496 | * CYANALIT GLUE.....REF:IS496 | FIU | 4 |
| Z8 | 8006710500 | PLAQUE AVANT CHASSIS ... 2230A | * CHASSIS FRONT PLATE 2230A | E932265 | 1 |
| Z8 | 8006740700 | DIFFUSEUR CADRAN FREQU. 2230A | * FREQUENCY DIAL DIFFUSER 2230A | A942239 | 1 |

| REPERE INDEXE | REF. ADRET PART NUMBER | DESCRIPTION | PART DESCRIPTION | FOURNISSEUR/PLAN SUPPLIER/DRAWING | QTE QTY |
|------------------|---------------------------|--------------------------------|----------------------------------|--------------------------------------|------------|
| C -001 | 3700180000 | 22MMF/16V 5,08 ... STAND L TAG | * 22MMF/16V 5,08 ... STAND L TAG | STC | 1 |
| C -002 | 3700180000 | 22MMF/16V 5,08 ... STAND L TAG | * 22MMF/16V 5,08 ... STAND L TAG | STC | 1 |
| D -001 | 4500310000 | 1 N 4448 | * 1 N 4448 | ITT | 1 |
| K -001 | 1520512400 | 05 TOUCHES ORE 10 .TTL. 2230A | * 05 TOUCHES ORE 10 .TTL. 2230A | C932473 | 1 |
| R -001 | 2210012200 | 220R | 5% N4 * 220R | 5% N4 SOUCOR | 1 |
| R -002 | 2210021200 | 1K2 | 5% N4 * 1K2 | 5% N4 SOUCOR | 1 |
| R -003 | 2210016800 | 680R | 5% N4 * 680R | 5% N4 SOUCOR | 1 |
| R -004 | 2210023300 | 3K3 | 5% N4 * 3K3 | 5% N4 SOUCOR | 1 |
| R -005 | 2210005100 | 51R | 5% N4 * 51R | 5% N4 SOUCOR | 1 |
| R -006 | 2210002200 | 22R | 5% N4 * 22R | 5% N4 SOUCOR | 1 |
| R -007 | 2210002200 | 22R | 5% N4 * 22R | 5% N4 SOUCOR | 1 |
| Z1 | 1269090300 | CI COMMUTEUR TTL 2230A | * PC TTL SWITCHER 2230A | 0996909 | 1 |
| Z6 | 6400280000 | PLOT A FOURCHE SOUDE . 8FMQ13C | * SOLDERED FORK CONTACT 8FMQ13C | COMATEL | 2 |
| Z8 | 8006763200 | TOUCHE GRISE D6H11 OREOR 2230A | * GREY TOUCH D6H11 OREOR 2230A | A942431 | 5 |





Ce document ne peut être
reproduit sans la
ETUDE DESSIN
ACOR