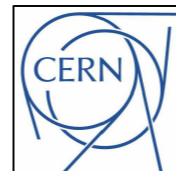
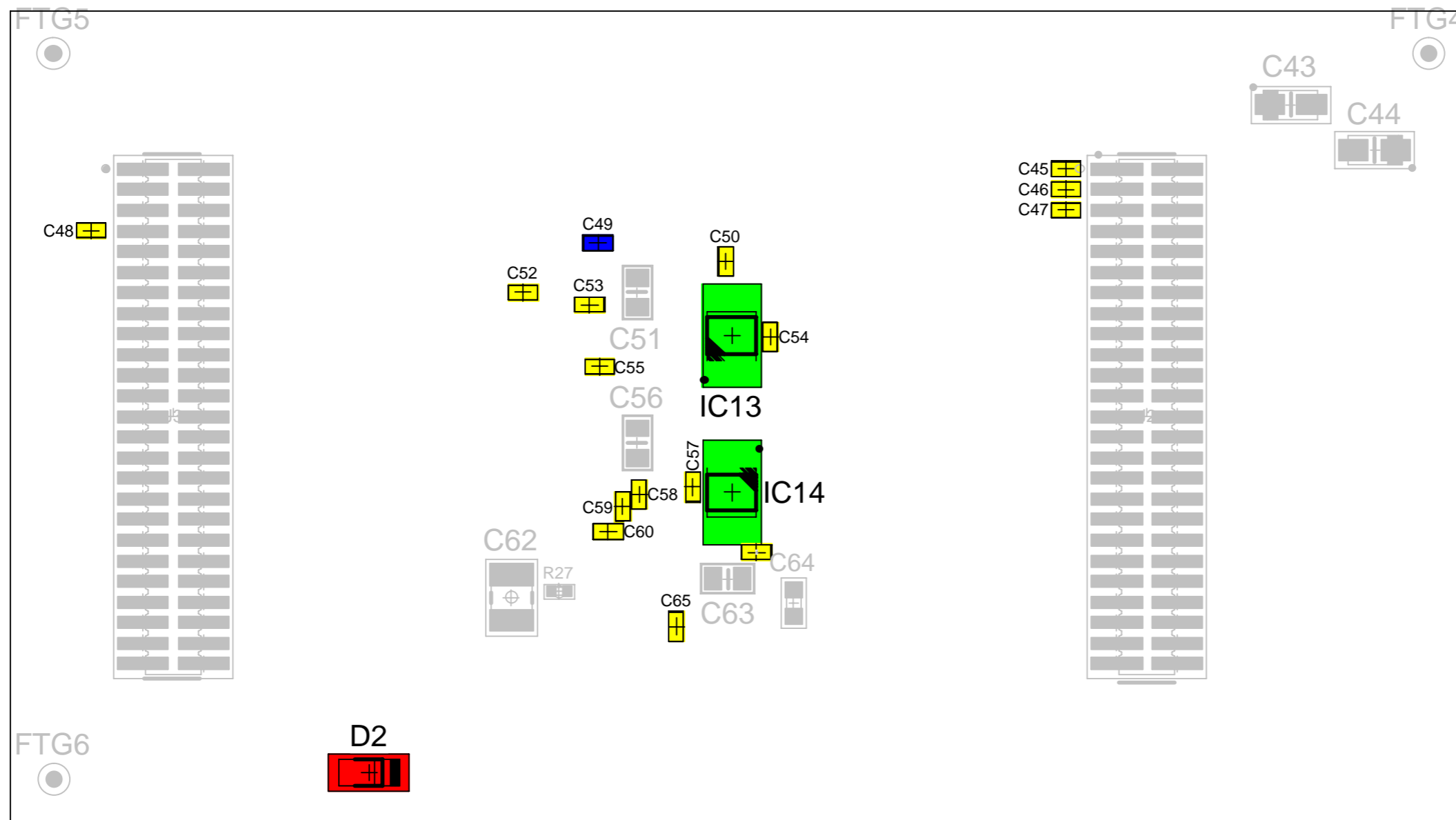


2 SMD BOTTOM

Color	Reference	VALUE	Part Number	OUTLINE	Qty
■	IC13-IC14	ADA4522-1ARMZ	ADA4522-1ARMZ	MSOP8	2
■	D2	BZV55-B5V1	BZV55-B5V1	SOD-80C	1
■	C45-C48, C50, C52-C55, C57-C61, C65	100nF	CC0402_100NF_16V_10%_X7R	0402	15
■	C49	1uF	CC0402_1UF_16V_10%_X5R	0402	1



TE/MPE/EM Design Office

ORGANISATION EUROPEENNE POUR
LA RECHERCHE NUCLEAIRE
EUROPEAN ORGANISATION FOR NUCLEAR RESEARCH
GENEVE

EDA-03803-V2-0

Prepared by C. Lesguillier

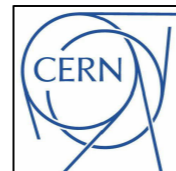
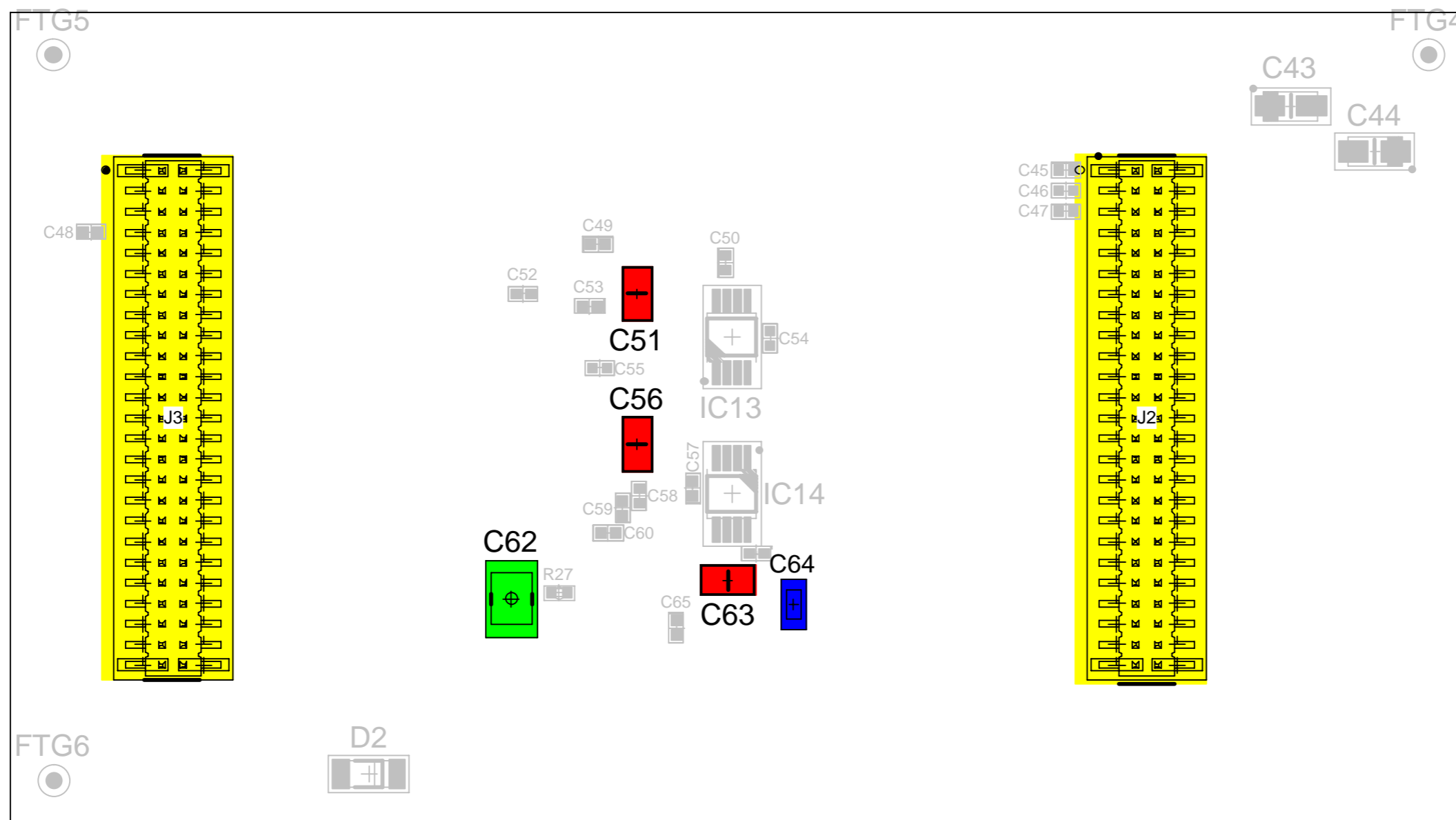
18/09/2018

BOTTOM

PAGE 1 / 3

2 SMD BOTTOM

Color	Reference	VALUE	Part Number	OUTLINE	Qty
	C62	1uF	ECPU1C105MA5	1210	1
	C51, C56, C63	1nF	CC0805_1NF_50V_5%_C0G	0805	3
	J2-J3	-	FTS-125-02-F-DV	-	2
	C64	10nF	CC0603_10NF_50V_5%_C0G	0603	1



TE/MPE/EM Design Office

ORGANISATION EUROPEENNE POUR
LA RECHERCHE NUCLEAIRE
EUROPEAN ORGANISATION FOR NUCLEAR RESEARCH
GENEVE

EDA-03803-V2-0

Prepared by C. Lesguillier

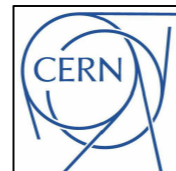
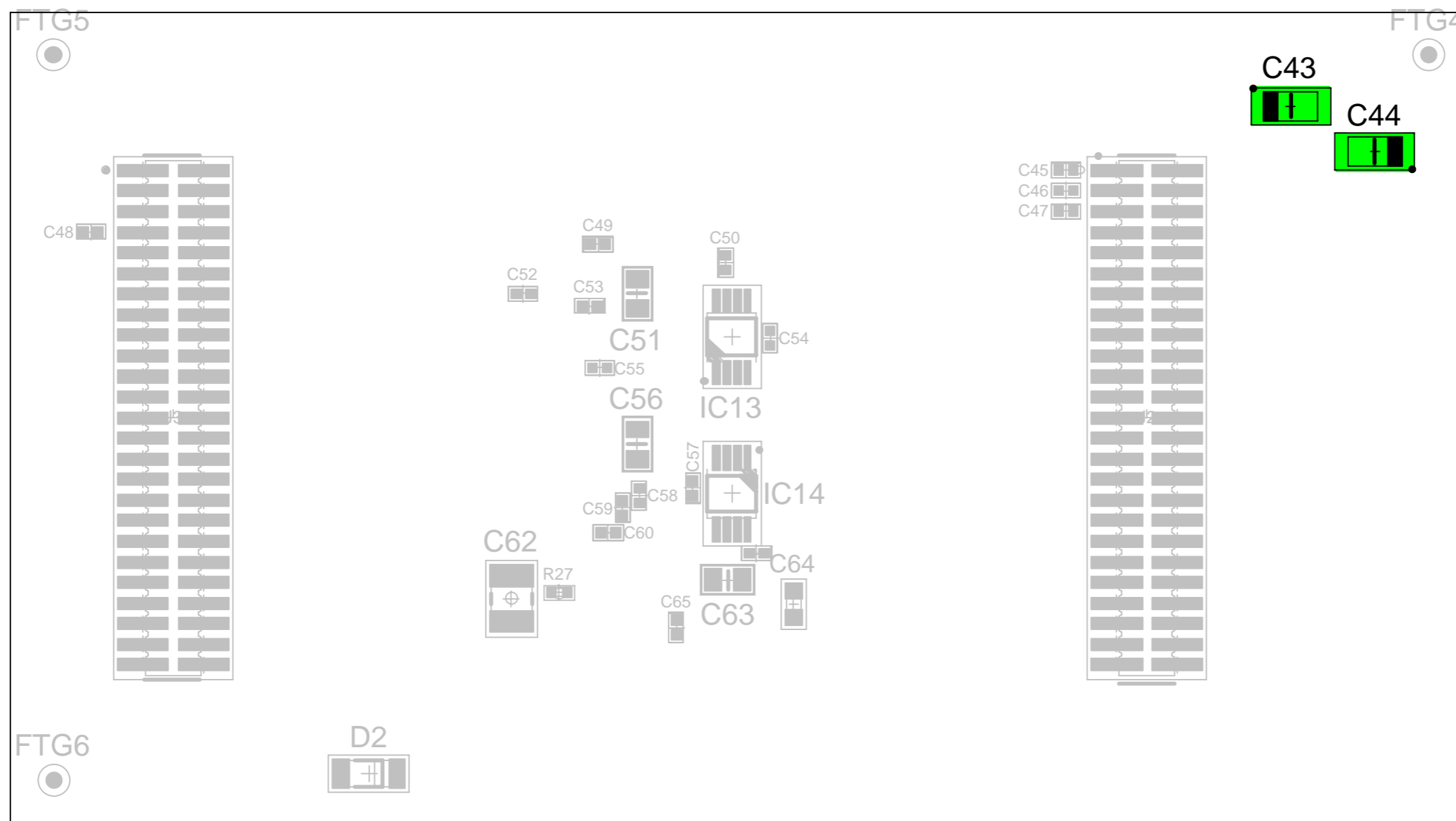
18/09/2018

BOTTOM

PAGE 2 / 3

2 SMD BOTTOM

Color	Reference	VALUE	Part Number	OUTLINE	Qty
■	C43-C44	10uF	TCJA106M016R0200	A	2



TE/MPE/EM Design Office

ORGANISATION EUROPEENNE POUR
LA RECHERCHE NUCLEAIRE
EUROPEAN ORGANISATION FOR NUCLEAR RESEARCH
GENEVE

EDA-03803-V2-0

Prepared by C. Lesguillier

18/09/2018

BOTTOM

PAGE 3 / 3