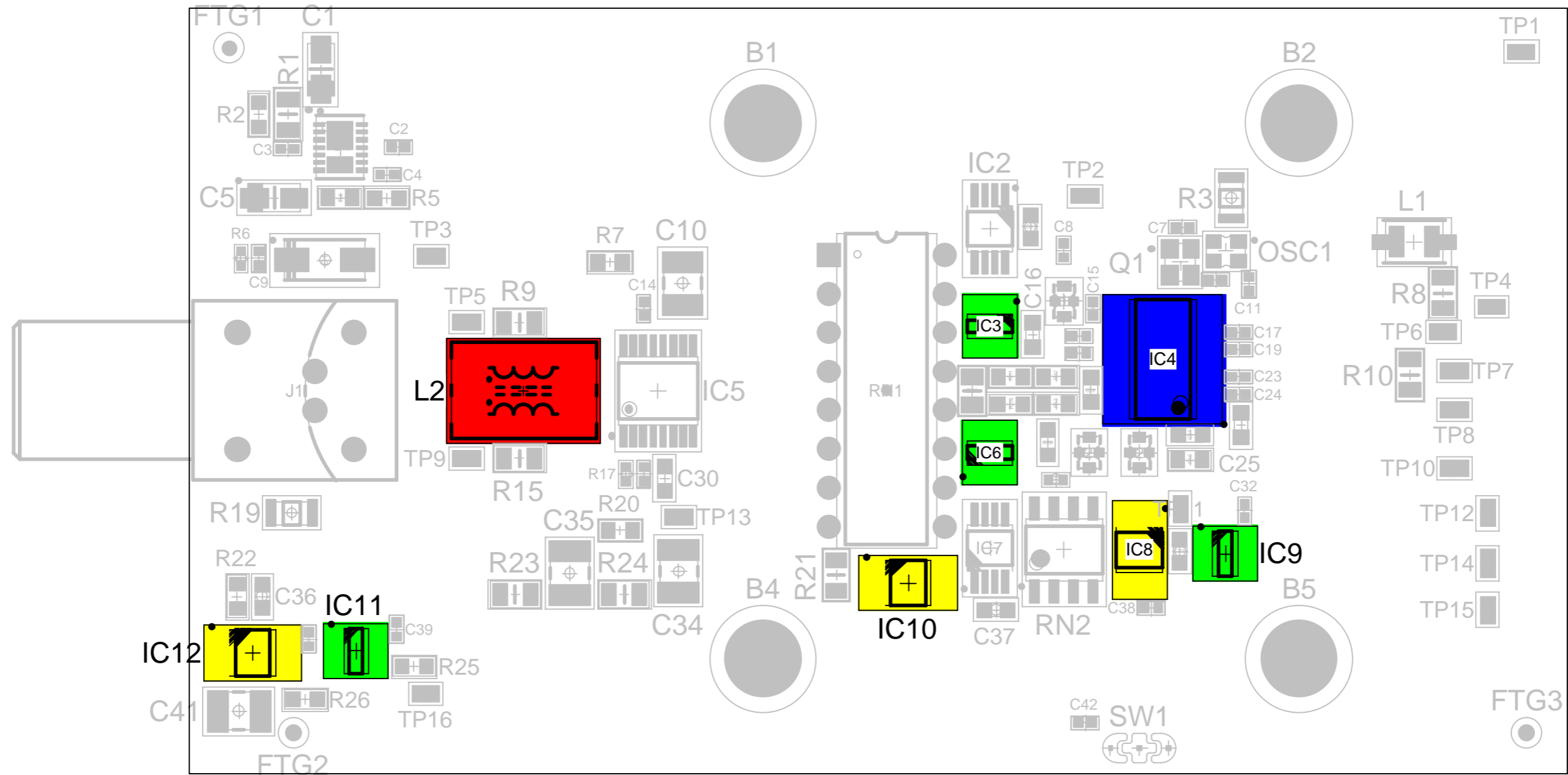


1 SMD TOP

Color	Reference	VALUE	Part Number	OUTLINE	Qty
■	IC3, IC6, IC9, IC11	AD8065ART-R2	AD8065ART-R2	SOT23-5	4
■	L2	2x10uH	744226	-	1
■	IC8, IC10, IC12	ADA4522-1ARMZ	ADA4522-1ARMZ	MSOP8	3
■	IC4	AD7177-2BRUZ	AD7177-2BRUZ	TSSOP24	1



TE/MPE/EM Design Office

ORGANISATION EUROPEENNE POUR
LA RECHERCHE NUCLEAIRE
EUROPEAN ORGANISATION FOR NUCLEAR RESEARCH
GENEVE

EDA-03803-V2-0

Prepared by C. Lesguillier

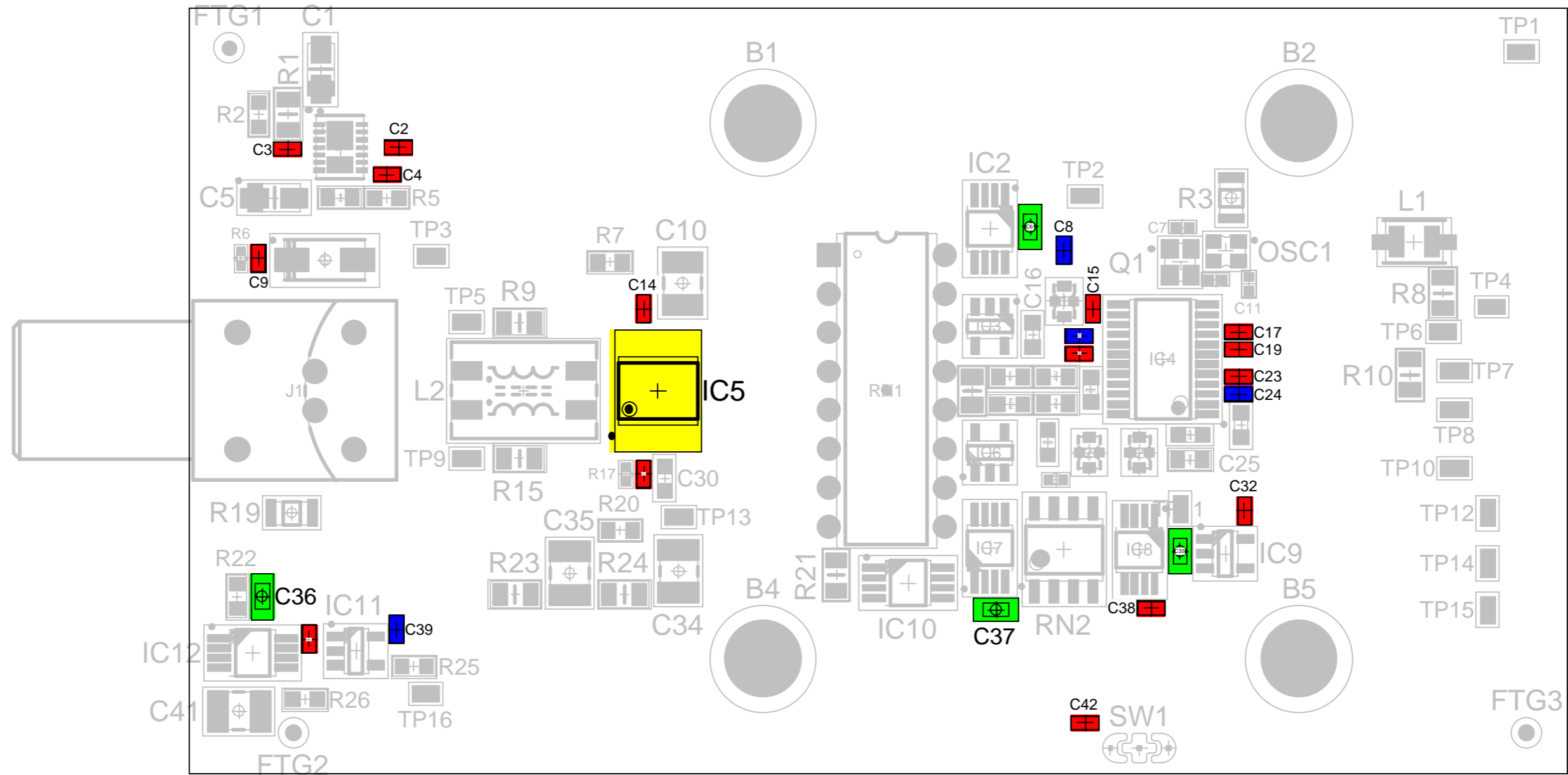
18/09/2018

TOP

PAGE 1 / 8

1 SMD TOP

Color	Reference	VALUE	Part Number	OUTLINE	Qty
	C6, C33, C36-C37	100pF	CC0603_100PF_50V_1%_NP0	0603	4
	C2-C4, C9, C14-C15, C17, C19-C20, C23, C31-C32, C38, C40, C42	100nF	CC0402_100NF_16V_10%_X7R	0402	15
	IC5	ADG1409YRUZ	ADG1409YRUZ	TSSOP16	1
	C8, C18, C24, C39	1uF	CC0402_1UF_16V_10%_X5R	0402	4



TE/MPE/EM Design Office

ORGANISATION EUROPEENNE POUR
LA RECHERCHE NUCLEAIRE
EUROPEAN ORGANISATION FOR NUCLEAR RESEARCH
GENEVE

EDA-03803-V2-0





Prepared by C. Lesguillier

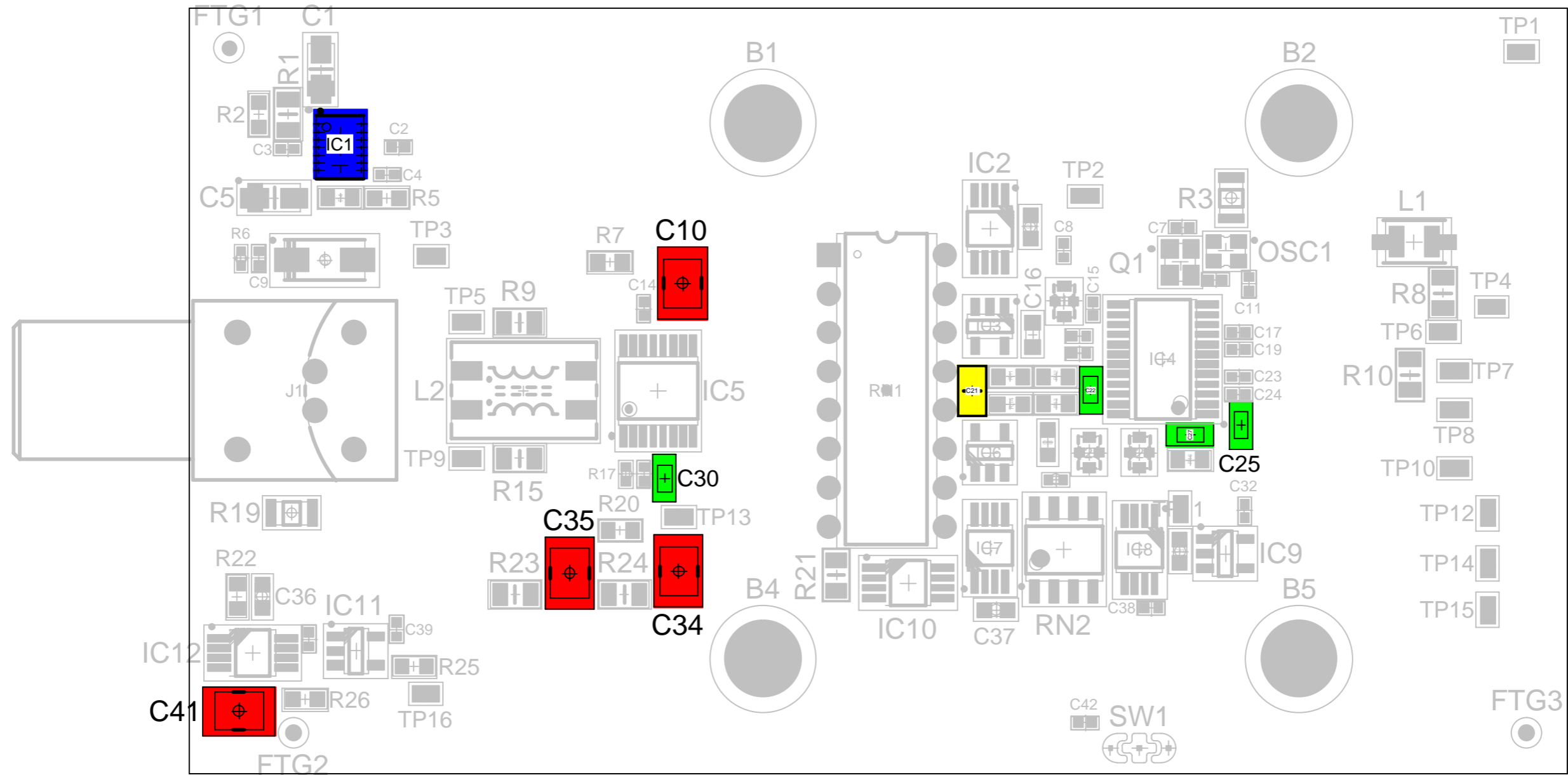
18/09/2018

TOP

PAGE 2 / 8

1 SMD TOP

Color	Reference	VALUE	Part Number	OUTLINE	Qty
	C22, C25, C27, C30	10nF	CC0603_10NF_50V_5%_C0G	0603	4
	C10, C34-C35, C41	1uF	EPCU1C105MA5	1210	4
	C21	1nF	CC0805_1NF_50V_5%_C0G	0805	1
	IC1	LT3032EDE#PBF	LT3032EDE#PBF	DFN14	1



TE/MPE/EM Design Office

ORGANISATION EUROPEENNE POUR
LA RECHERCHE NUCLEAIRE
EUROPEAN ORGANISATION FOR NUCLEAR RESEARCH
GENEVE

EDA-03803-V2-0

Prepared by C. Lesguillier

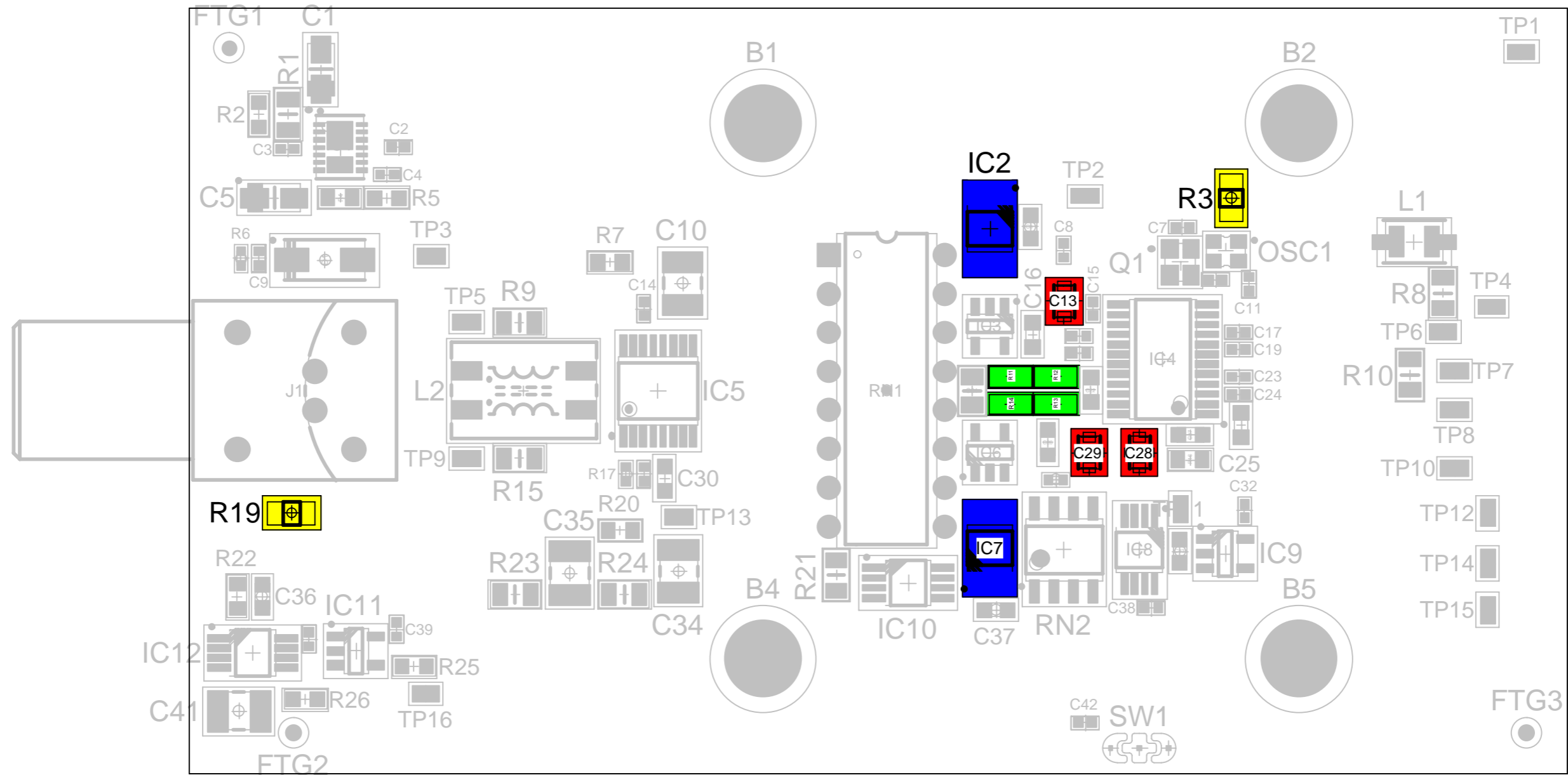
18/09/2018

TOP

PAGE 3 / 8

1 SMD TOP

Color	Reference	VALUE	Part Number	OUTLINE	Qty
■	R11-R14	1	MCT06030C1008FP500	0603	4
■	C13, C28-C29	2.2uF	NFM21PC225B0J3D	0805	3
■	R3, R19	PT1000 SMD 1206 fd F 0,3	PT1000 SMD 1206 fd F 0,3	DFN2	2
■	IC2, IC7	OPA388IDGKT	OPA388IDGKT	MSOP8	2



TE/MPE/EM Design Office

ORGANISATION EUROPEENNE POUR
LA RECHERCHE NUCLEAIRE
EUROPEAN ORGANISATION FOR NUCLEAR RESEARCH
GENEVE

EDA-03803-V2-0





Prepared by C. Lesguillier

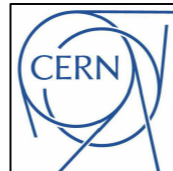
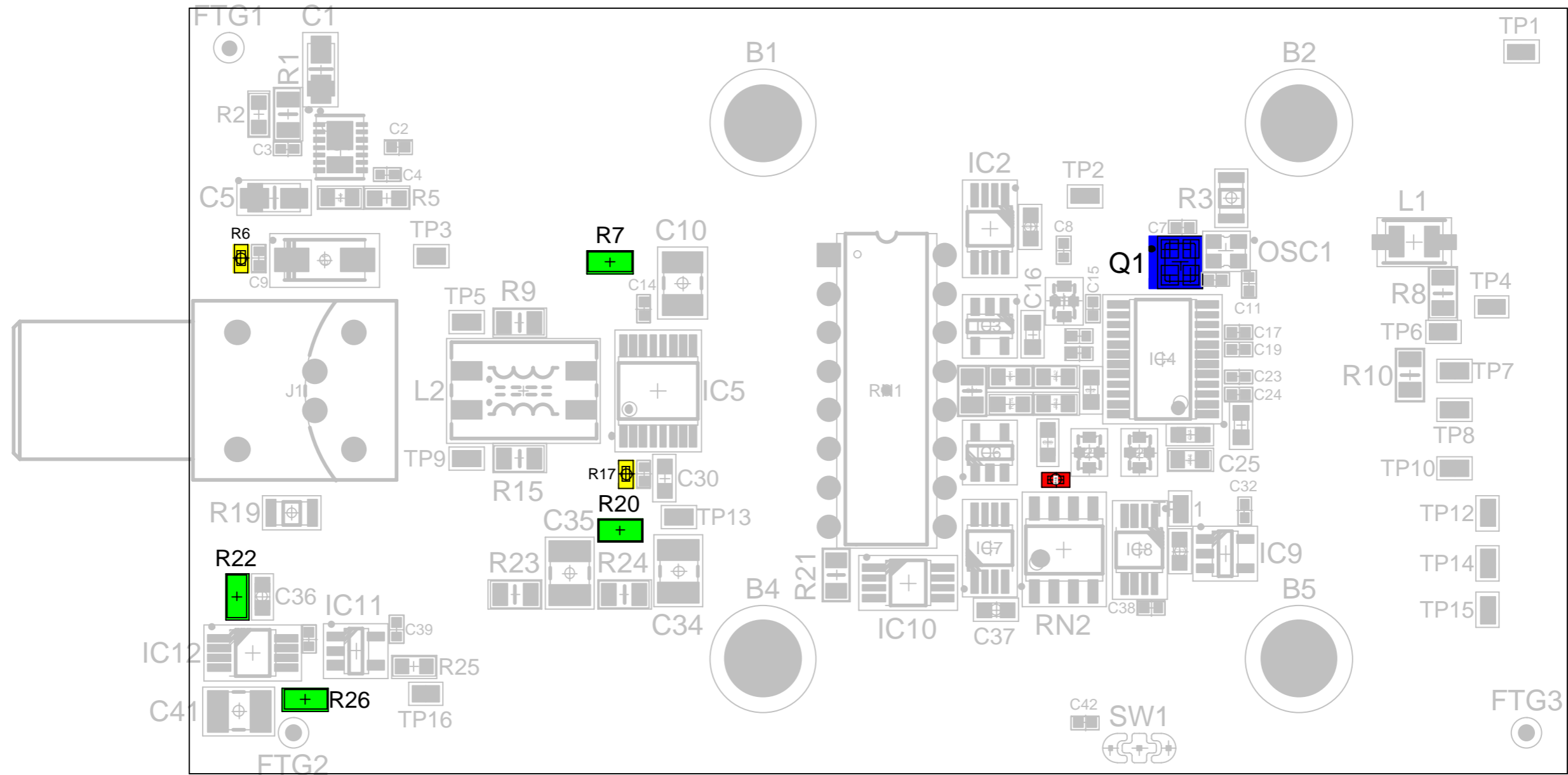
18/09/2018

TOP

PAGE 4 / 8

1 SMD TOP

Color	Reference	VALUE	Part Number	OUTLINE	Qty
	R7, R20, R22, R26	100	R0603_100R_0.1%_0.063W_10PPM	0603	4
	R18	0	R0402_0R_JUMPER	0402	1
	R6, R17	1k	R0402_1K_1%_0.0625W_100PPM	0402	2
	Q1	16MHz	Q24FA20H00044	-	1



TE/MPE/EM Design Office

ORGANISATION EUROPEENNE POUR
LA RECHERCHE NUCLEAIRE
EUROPEAN ORGANISATION FOR NUCLEAR RESEARCH
GENEVE

EDA-03803-V2-0





Prepared by C. Lesguillier

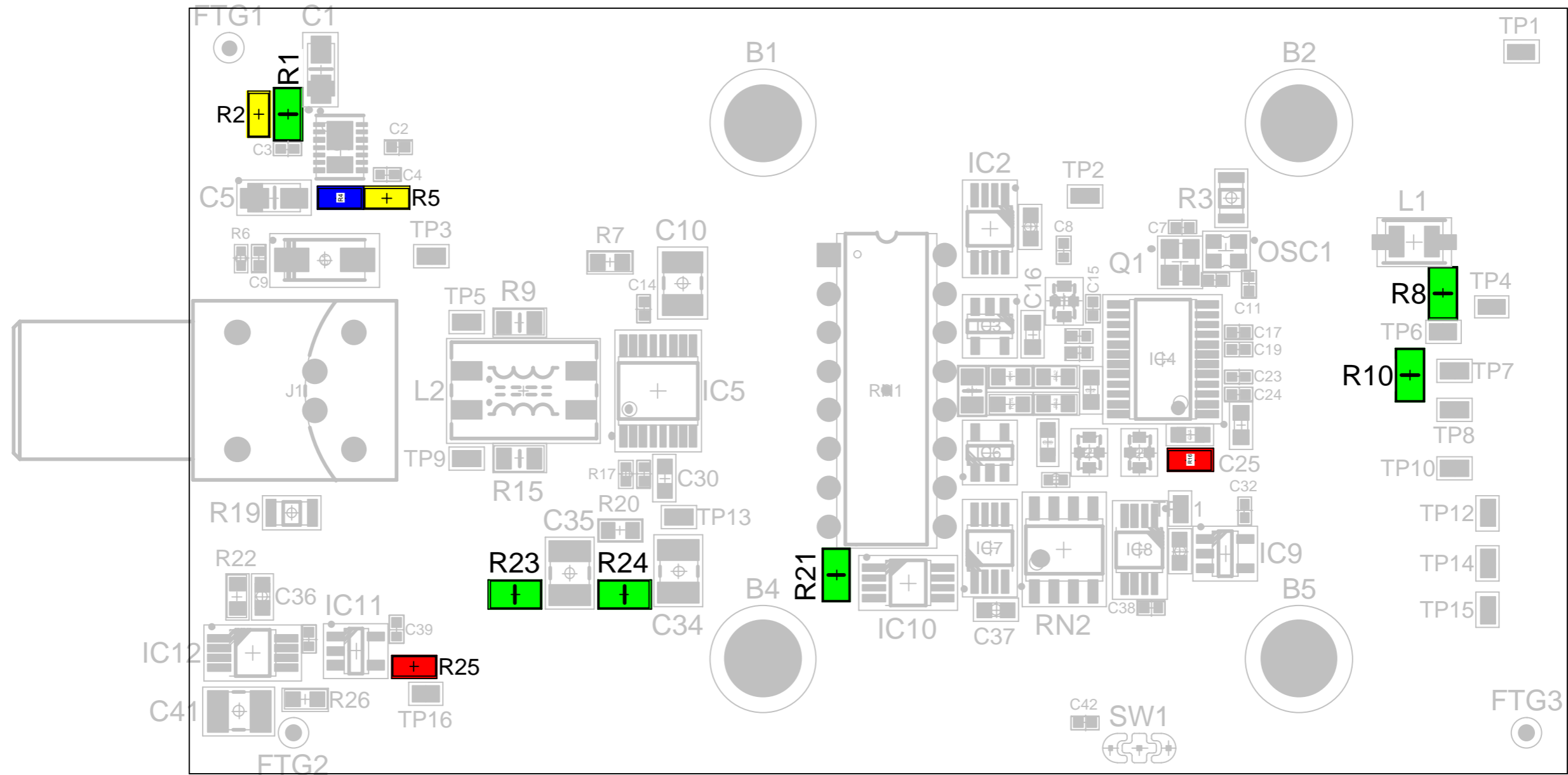
18/09/2018

TOP

PAGE 5 / 8

1 SMD TOP

Color	Reference	VALUE	Part Number	OUTLINE	Qty
	R1, R8, R10, R21, R23-R24	10k	R0805_10K_0.1%_0.1W_10PPM	0805	6
	R16, R25	10	R0603_10R_0.1%_0.063W_10PPM	0603	2
	R2, R5	2k	R0603_2K_0.1%_0.063W_10PPM	0603	2
	R4	2k1	R0603_2K1_0.1%_0.063W_10PPM	0603	1



TE/MPE/EM Design Office

ORGANISATION EUROPEENNE POUR
LA RECHERCHE NUCLEAIRE
EUROPEAN ORGANISATION FOR NUCLEAR RESEARCH
GENEVE

EDA-03803-V2-0





Prepared by C. Lesguillier

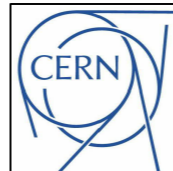
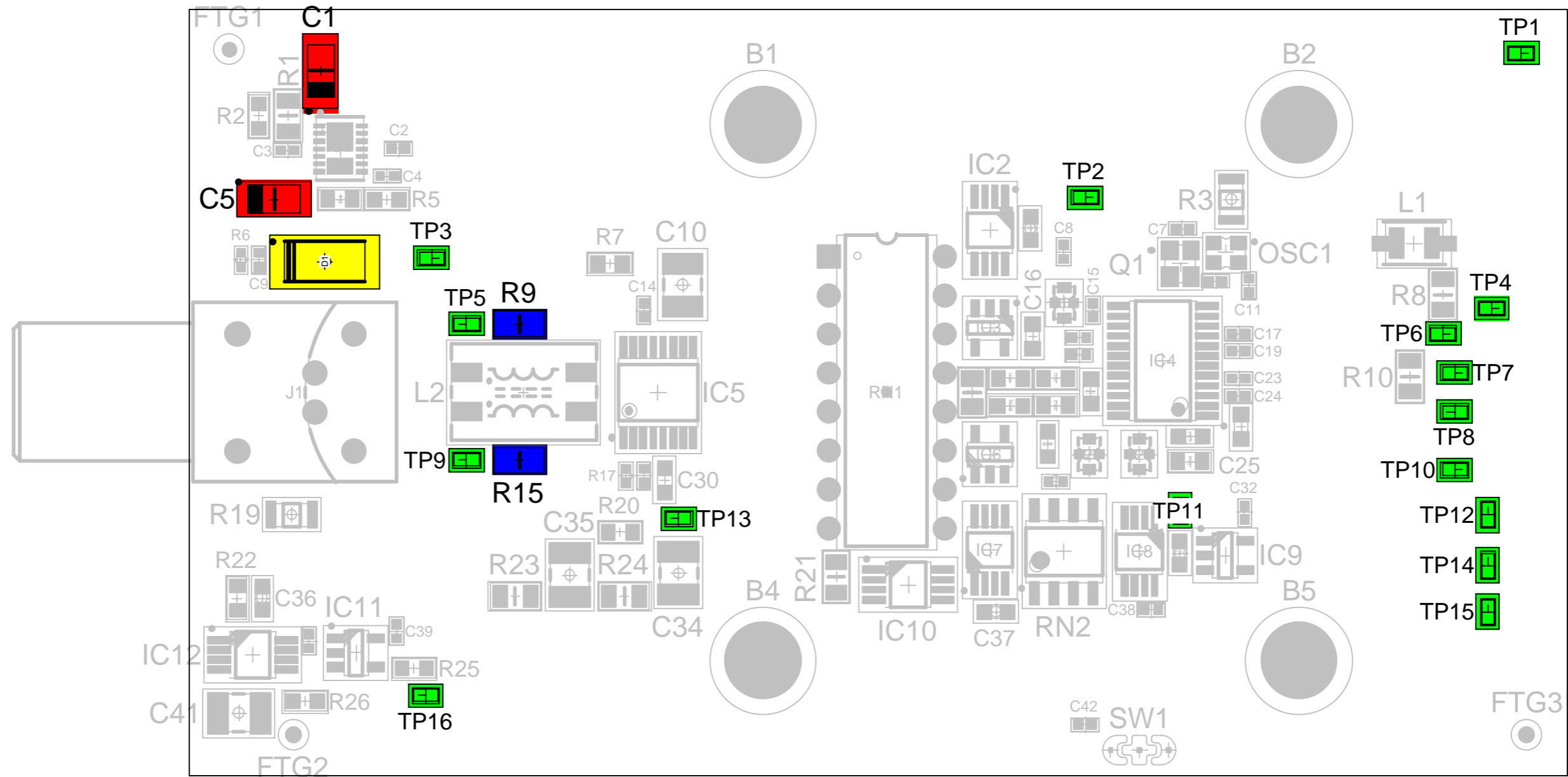
18/09/2018

TOP

PAGE 6 / 8

1 SMD TOP

Color	Reference	VALUE	Part Number	OUTLINE	Qty
	TP1-TP16	-	S2761-46R	-	16
	C1, C5	10uF	TCJA106M016R0200	A	2
	D1	SMAJ12CA	SMAJ12CA	DO-214AC	1
	R9, R15	1M	R0805_1M_0.1%_0.1W_25PPM	0805	2



TE/MPE/EM Design Office

ORGANISATION EUROPEENNE POUR
LA RECHERCHE NUCLEAIRE
EUROPEAN ORGANISATION FOR NUCLEAR RESEARCH
GENEVE

EDA-03803-V2-0

Prepared by C. Lesguillier

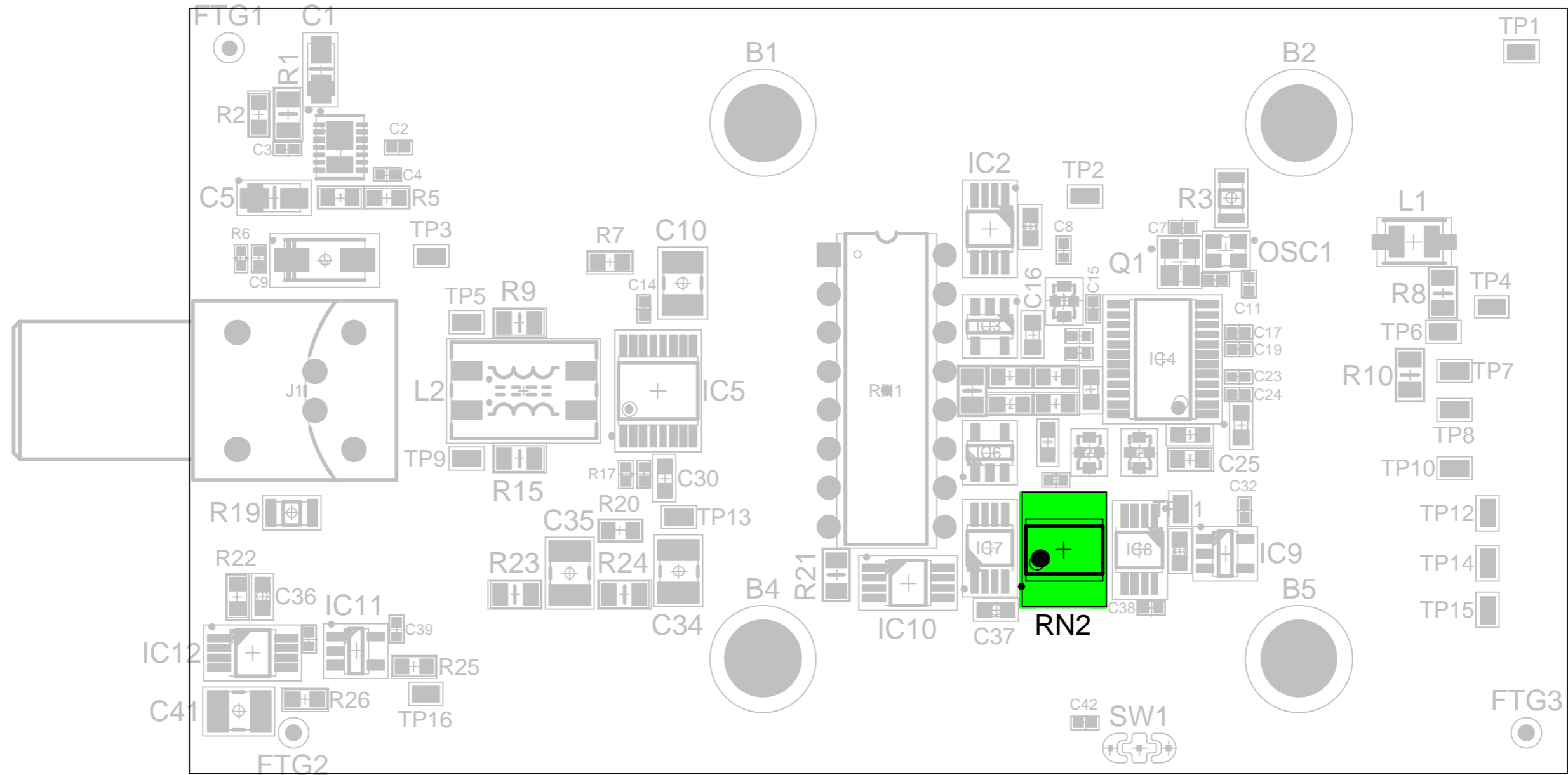
18/09/2018

TOP

PAGE 7 / 8

1 SMD TOP

Color	Reference	VALUE	Part Number	OUTLINE	Qty
■	RN2	10k	Y1365V0008QT9R	SOIC8	1



TE/MPE/EM Design Office

ORGANISATION EUROPEENNE POUR
LA RECHERCHE NUCLEAIRE
EUROPEAN ORGANISATION FOR NUCLEAR RESEARCH
GENEVE

EDA-03803-V2-0

Prepared by C. Lesguillier

18/09/2018

TOP

PAGE 8 / 8