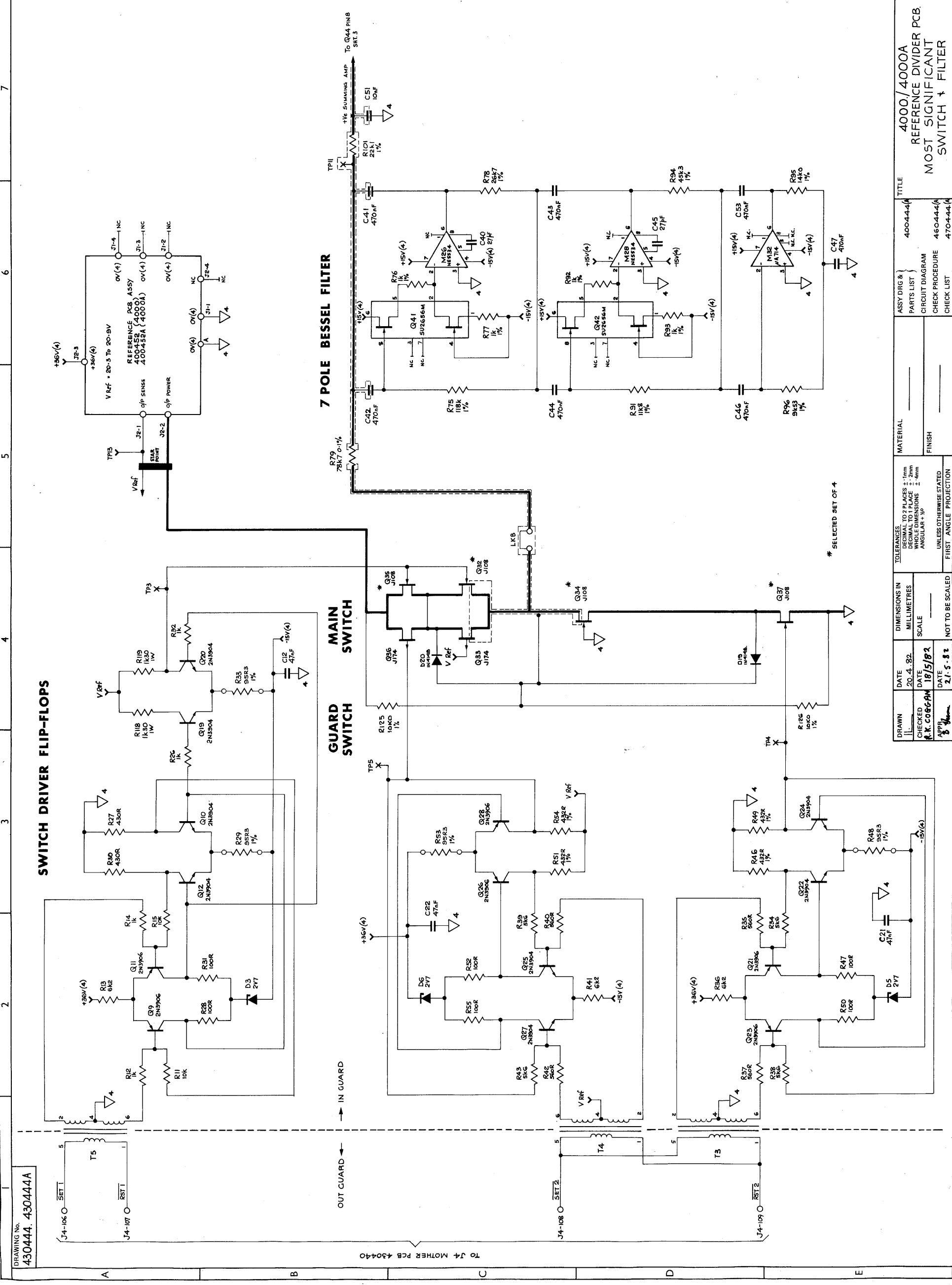




ISS	CHANGES
1	RELEASED 7.5.82
2	TO 1985 4000/4000A PCB ASSEMBLY
3	CO. 1985 4000/4000A PCB ASSEMBLY
4	SEE SHEET 3
5	ECO 1501 1502
6	ECO 1501 1502
7	ECO 1501 1502
8	ECO 1501 1502
9	ECO 1501 1502
10	ECO 1501 1502
11	ECO 1501 1502
12	ECO 1501 1502
13	ECO 1501 1502
14	ECO 1501 1502
15	ECO 1501 1502
16	ECO 1501 1502
17	ECO 1501 1502
18	ECO 1501 1502
19	ECO 1501 1502
20	ECO 1501 1502
21	ECO 1501 1502
22	ECO 1501 1502
23	ECO 1501 1502
24	ECO 1501 1502
25	ECO 1501 1502
26	ECO 1501 1502
27	ECO 1501 1502
28	ECO 1501 1502
29	ECO 1501 1502
30	ECO 1501 1502
31	ECO 1501 1502
32	ECO 1501 1502
33	ECO 1501 1502
34	ECO 1501 1502
35	ECO 1501 1502
36	ECO 1501 1502
37	ECO 1501 1502
38	ECO 1501 1502
39	ECO 1501 1502
40	ECO 1501 1502
41	ECO 1501 1502
42	ECO 1501 1502
43	ECO 1501 1502
44	ECO 1501 1502
45	ECO 1501 1502
46	ECO 1501 1502
47	ECO 1501 1502
48	ECO 1501 1502
49	ECO 1501 1502
50	ECO 1501 1502
51	ECO 1501 1502
52	ECO 1501 1502
53	ECO 1501 1502
54	ECO 1501 1502
55	ECO 1501 1502
56	ECO 1501 1502
57	ECO 1501 1502
58	ECO 1501 1502
59	ECO 1501 1502
60	ECO 1501 1502
61	ECO 1501 1502
62	ECO 1501 1502
63	ECO 1501 1502
64	ECO 1501 1502
65	ECO 1501 1502
66	ECO 1501 1502
67	ECO 1501 1502
68	ECO 1501 1502
69	ECO 1501 1502
70	ECO 1501 1502
71	ECO 1501 1502
72	ECO 1501 1502
73	ECO 1501 1502
74	ECO 1501 1502
75	ECO 1501 1502
76	ECO 1501 1502
77	ECO 1501 1502
78	ECO 1501 1502
79	ECO 1501 1502
80	ECO 1501 1502
81	ECO 1501 1502
82	ECO 1501 1502
83	ECO 1501 1502
84	ECO 1501 1502
85	ECO 1501 1502
86	ECO 1501 1502
87	ECO 1501 1502
88	ECO 1501 1502
89	ECO 1501 1502
90	ECO 1501 1502
91	ECO 1501 1502
92	ECO 1501 1502
93	ECO 1501 1502
94	ECO 1501 1502
95	ECO 1501 1502
96	ECO 1501 1502
97	ECO 1501 1502
98	ECO 1501 1502
99	ECO 1501 1502
100	ECO 1501 1502



DRAWING No. 430444		DATE 20.4.82		DIMENSIONS IN MILLIMETRES		MATERIAL		ASSY DRG & PARTS LIST		TITLE	
J4-106 O SBT 1		DATE 18/5/82		SCALE		FINISH		CIRCUIT DIAGRAM		4000/4000A	
J4-107 O RST 1		DATE 2.1.5.82		NOT TO BE SCALED		UNLESS OTHERWISE STATED		CHECK PROCEDURE		460444(A)	
J4-108 O SBT 2								CHECK LIST		470444(A)	
J4-109 O RST 2										4000/4000A	
										REFERENCE DIVIDER PCB.	
										MOST SIGNIFICANT SWITCH FILTER	

**datron**  
ELECTRONICS  
LIMITED  
NORWICH

DRAWING No. 430444  
430444A  
430444A

4000/4000A  
REFERENCE DIVIDER PCB.  
MOST SIGNIFICANT  
SWITCH FILTER

400444(A)  
460444(A)  
470444(A)

TOLERANCES: TO 3 PLACES - 1mm  
DECIMAL TO 1 PLACE - 2mm  
WHOLE DIMENSIONS ± .5mm  
ANGULAR ± 30°  
UNLESS OTHERWISE STATED  
FIRST ANGLE PROJECTION

DATE 20.4.82  
DATE 18/5/82  
DATE 2.1.5.82

DRAWN  
CHECKED  
APPROVED

DATE 20.4.82  
DATE 18/5/82  
DATE 2.1.5.82

DIMENSIONS IN MILLIMETRES  
SCALE  
NOT TO BE SCALED

MATERIAL  
FINISH

ISS	CHANGES
1	RELEASED 7.5.82
2	SEE SHIT 1
3	ECO. 1383. 1380 R18 WAS B66R R23 WAS 20K R25 WAS 20K IL 24.8.82
4	SEE SHEET 3
5	ECO. 1383. 1380 R20 WAS 10K R21 WAS 10K IL 24.8.82
6	SEE SHITS 4 + 5

**datron**  
ELECTRONICS  
LIMITED  
NORWICH

DRAWING No.  
**430444A**  
**430444A**

SHEET 2 OF 6

7

6

5

4

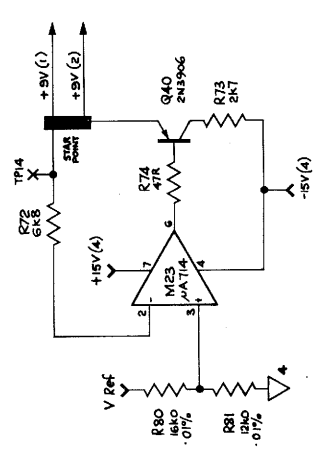
3

2

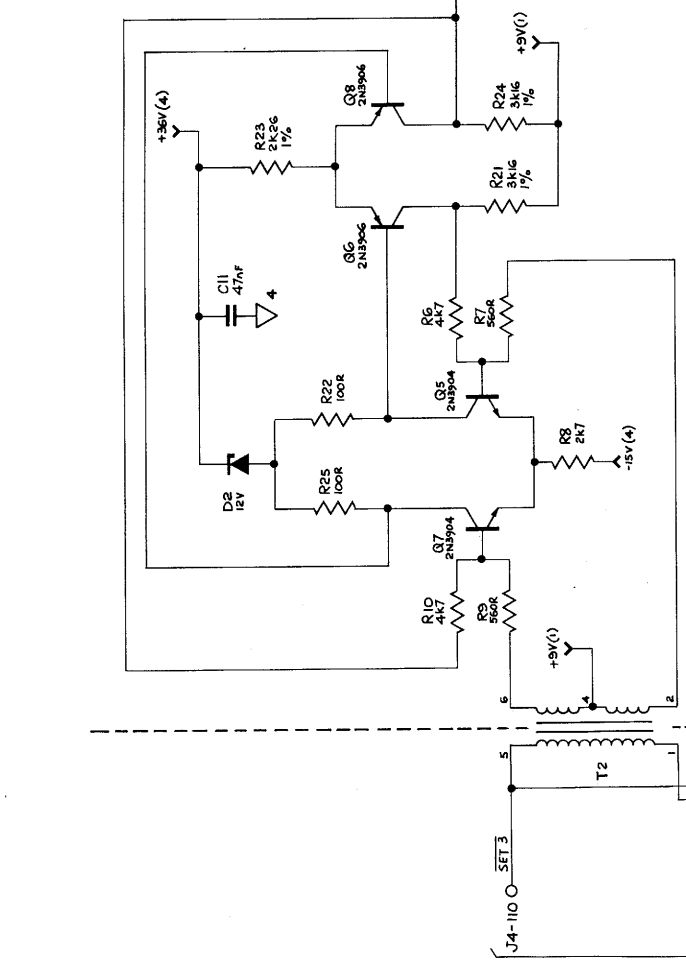
1

DRAWING No.  
**430444A**

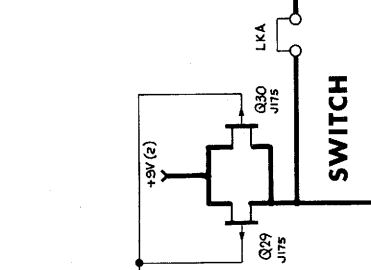
**REFERENCE BUFFER**



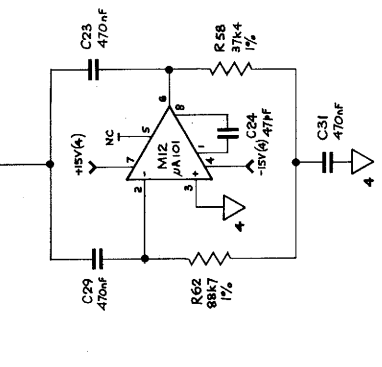
**SWITCH DRIVER**



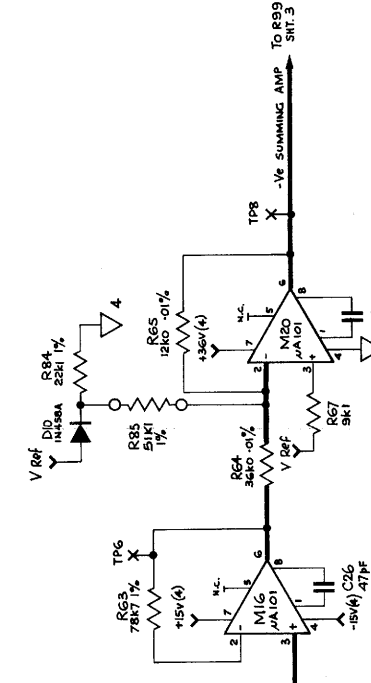
**SWITCH**



**3 POLE BESSEL FILTER**



**OFFSET BIAS AMPLIFIER**



To J4  
MOTHER  
430440

OUT-GUARD → IN-GUARD

DRAWN	DATE	DIMENSIONS IN	TOLERANCES	MATERIAL	ASSY DRG & PARTS LIST	TITLE
IL	20.4.82	MILLIMETRES	DECIMAL TO 2 PLACES ±.1mm DECIMAL TO 1 PLACE ±.2mm WHOLE DIMENSIONS ANGULAR ±.5°	FINISH	400444A	4000/4000A
CHECKED	DATE	SCALE	UNLESS OTHERWISE STATED		CIRCUIT DIAGRAM	REFERENCE DIVIDER PCB
APPROVED	21.5.82	NOT TO BE SCALED	FIRST ANGLE PROJECTION		CHECK PROCEDURE	LEAST SIGNIFICANT SWITCH AND FILTER
					CHECK LIST	

ISS	CHANGES
1	RELEASED T.S. REL.
2	SEE SHT 1
3	SEE SHTS 1 AND 2
4	ECCO 14339, 11-2-83 BY [Signature]
5	R124 & C66 MODIFIED
6	SEE SHTS 1 & 2
7	SEE SHTS 4, 5 & 6

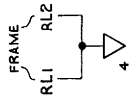
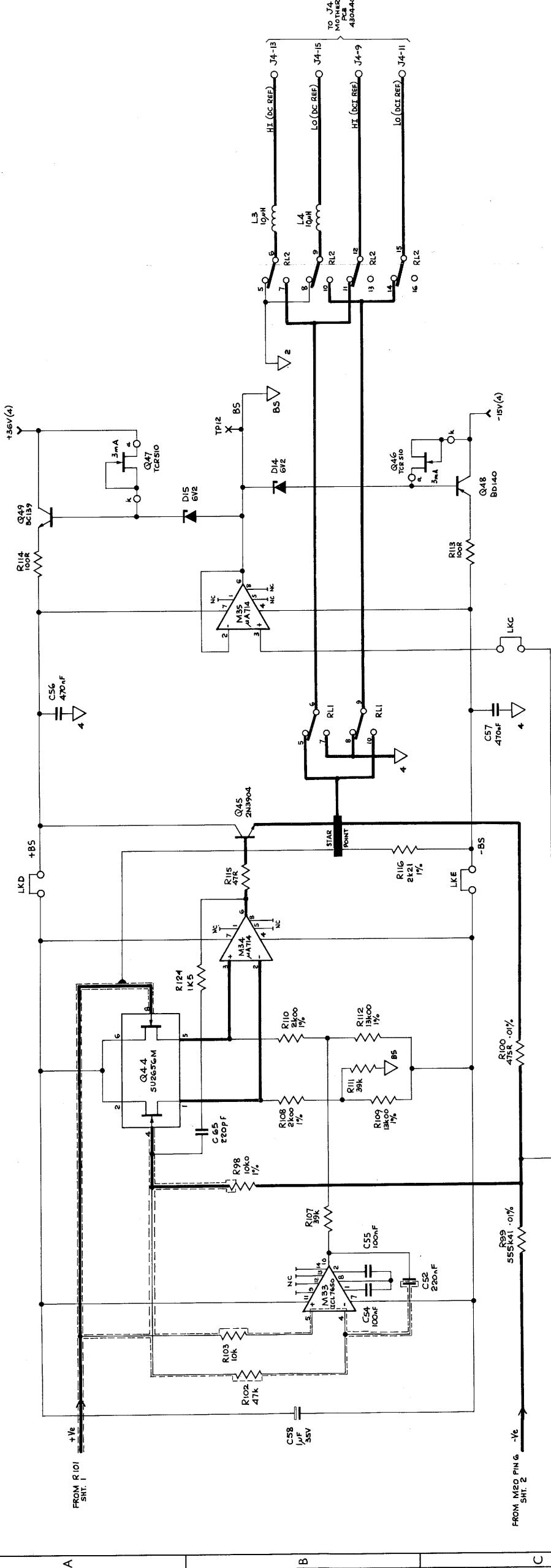
**datron**  
ELECTRONICS  
LIMITED  
NORWICH

DRAWING No. **430444A**  
**430444A**  
SHEET 3 OF 6

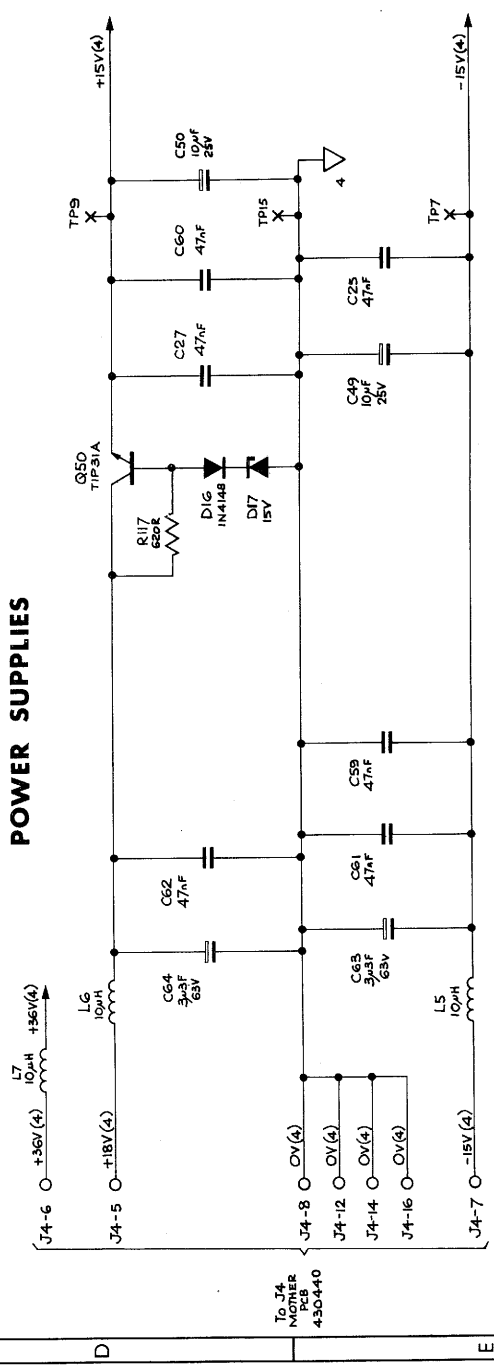
1 2 3 4 5 6 7

**SUMMING AMPLIFIER**

**BOOTSTRAP SUPPLIES**



**POWER SUPPLIES**



DRAWN	DATE	DIMENSIONS IN	TOLERANCES	MATERIAL	ASSY DRG & PARTS LIST	TITLE
CHECKED	20.4.82	MILLIMETRES	DECIMAL TO 2 PLACES ±.1mm DECIMAL TO 1 PLACE ±.2mm ANGULAR ±.5°			400044(A)
APPR	18/5/82	SCALE	UNLESS OTHERWISE STATED FIRST ANGLE PROJECTION	FINISH	CHECK PROCEDURE	460444(A)
	21.5.82	NOT TO BE SCALED			CHECK LIST	470444(A)

4000/4000A  
REFERENCE DIVIDER PCB.  
SUMMING AMPLIFIER AND  
COMMON 4 SUPPLIES.

DRAWING No. **430444A**

TO J4 MOTHER PCB 430444

FROM R101 SHT. 1

FROM M20 PIN 6 -16 SHT. 2

TO J4 MOTHER PCB 430440



- CHANGES
- 1 RELEASED 7.5.82
  - 2 SEE SHT 1
  - 3 SEE SHTS 1 AND 2
  - 4 SEE SHEET 3
  - 5 SEE SHEETS 1 & 2
  - 6 M24-5 TO M30-5 LINK DELETED.

**datron**  
ELECTRONICS  
LIMITED  
NORWICH

DRAWING No.  
**430444A**  
430444A  
SHEET 5 OF 6

7

6

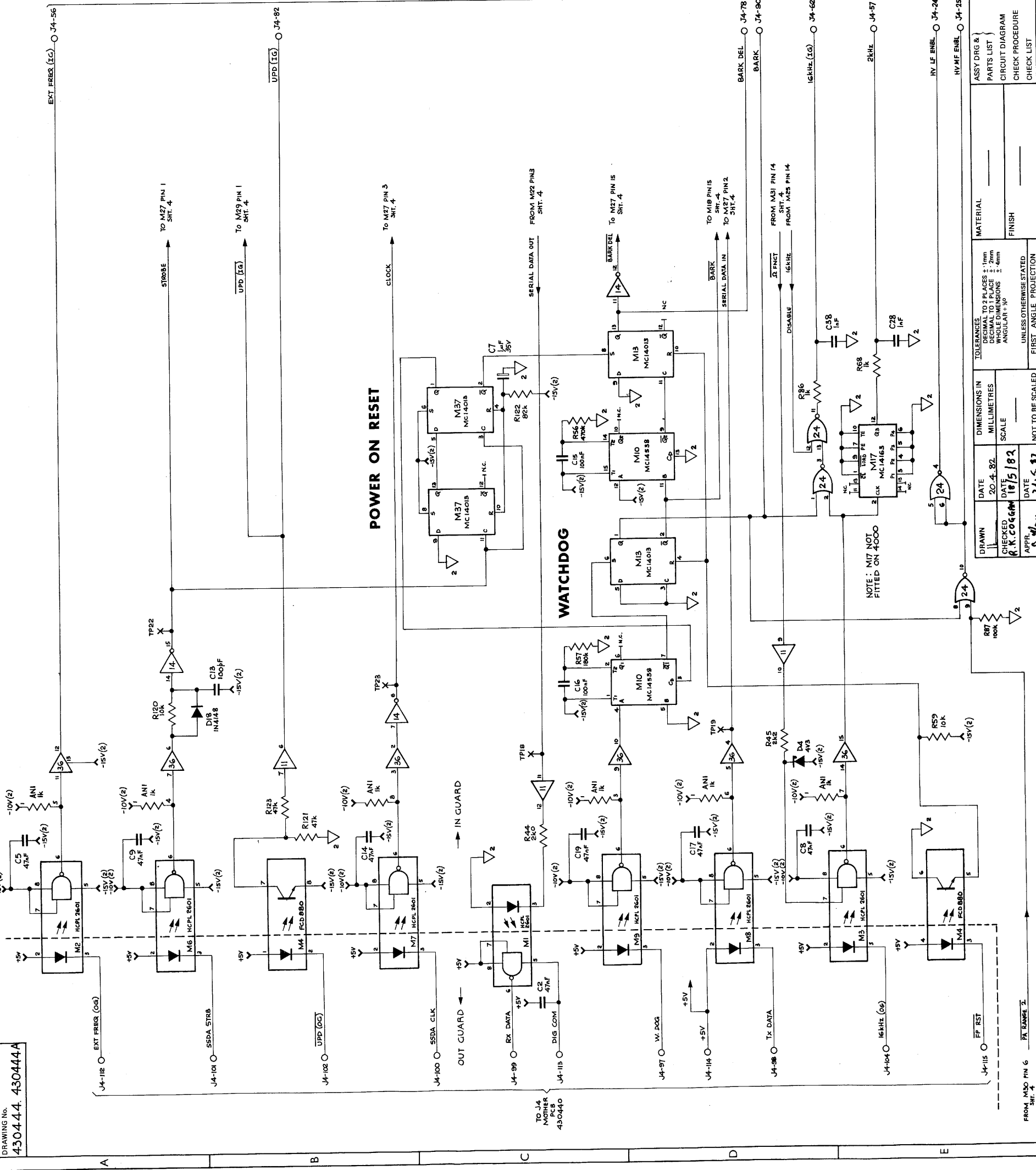
5

4

3

2

1



ISS.	CHANGES
1	RELEASED 7.5.82
2	SEE SHT 1
3	SEE SHTS 1 AND 2
4	SEE SHT 5
5	SEE SHTS 2 & 1
6	SEE SHTS 4 & 5

**datron**  
ELECTRONICS  
LIMITED  
NORWICH

DRAWING No.  
**430444**  
**430444A**

SHEET 6 OF 6

NOTES

5

ALL BURRS TO BE REMOVED

4

3

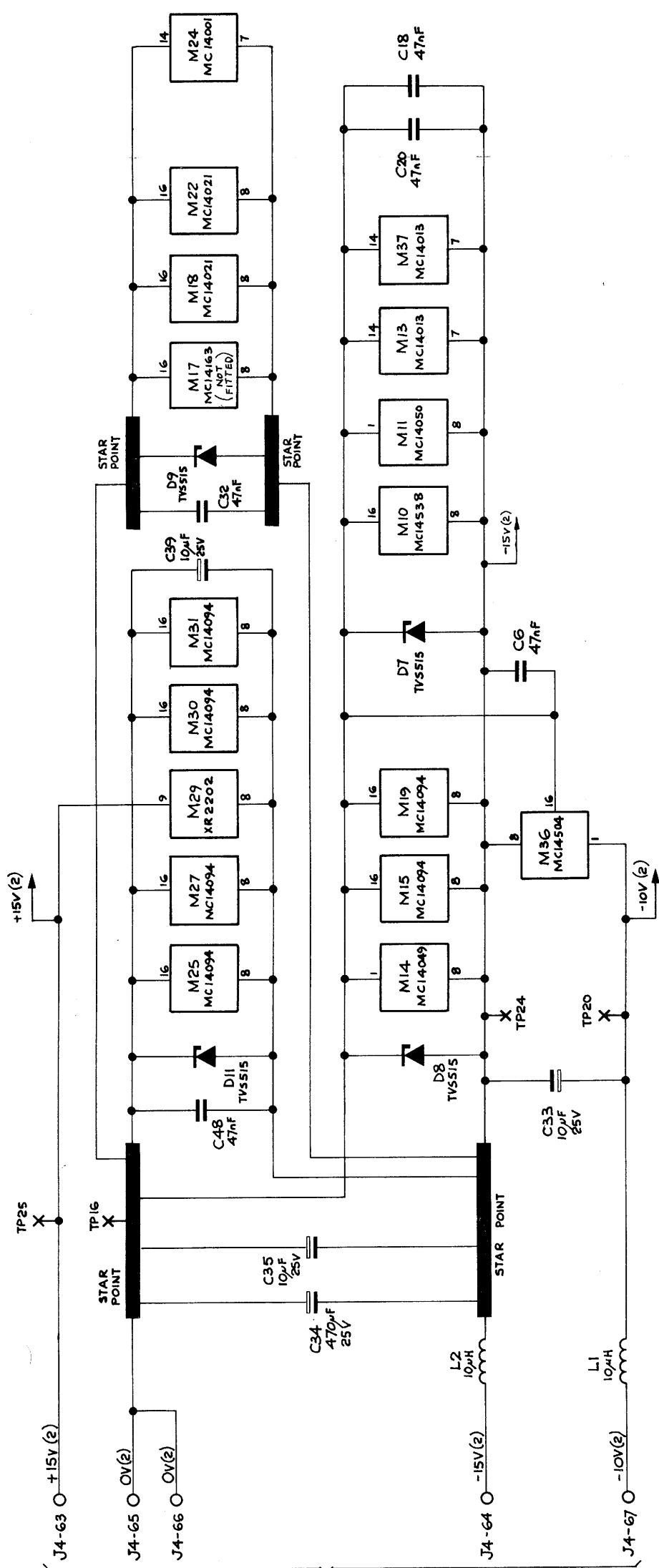
2

1

# THIRD ANGLE PROJECTION

DRAWN IN ACCORDANCE WITH BS 308

DRAWING No.  
**430444. 430444A**  
FIRST USED ON



To J4  
NICHEP  
PCB  
430444

TITLE  
**400444**  
**REFERENCE DIVIDER PCB**  
**COMMON 2 POWER SUPPLIES**

ASSY DRG & PARTS LIST  
CIRCUIT DIAGRAM  
CHECK PROCEDURE  
CHECK LIST

MATERIAL  
FINISH

TOLERANCES  
DECIMAL TO 2 PLACES ± 1mm  
DECIMAL TO 1 PLACE ± .2mm  
WHOLE DIMENSIONS ± .4mm  
ANGULAR ± 1/2°  
UNLESS OTHERWISE STATED  
FIRST ANGLE PROJECTION

DRAWN	DATE	DIMENSIONS IN MILLIMETRES	SCALE	NOT TO BE SCALED
JL	29. 4. 82			
CHECKED	DATE			
R.K. COGGAN	18/5/82			
APPR	DATE			
B. Williams	21. 5. 82			