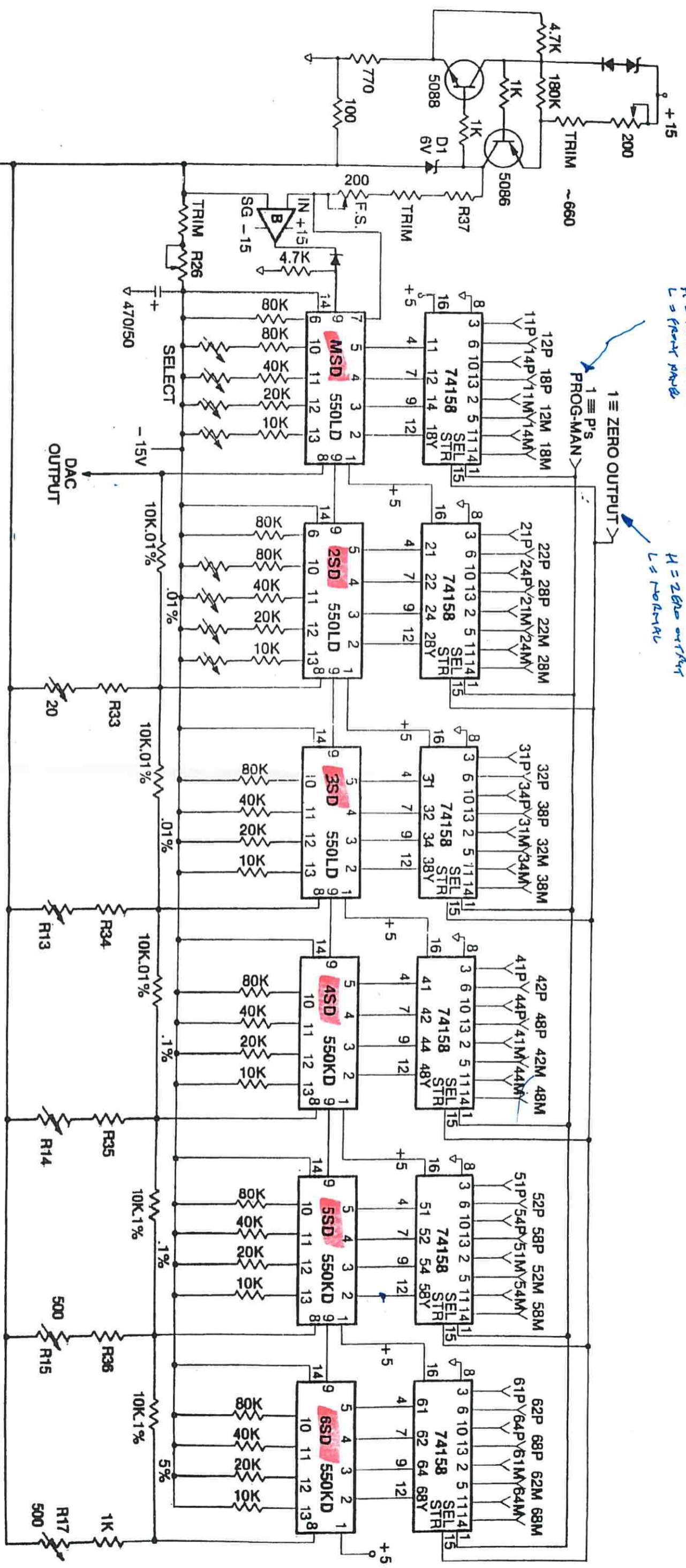


H = 2.825 output  
L = normal



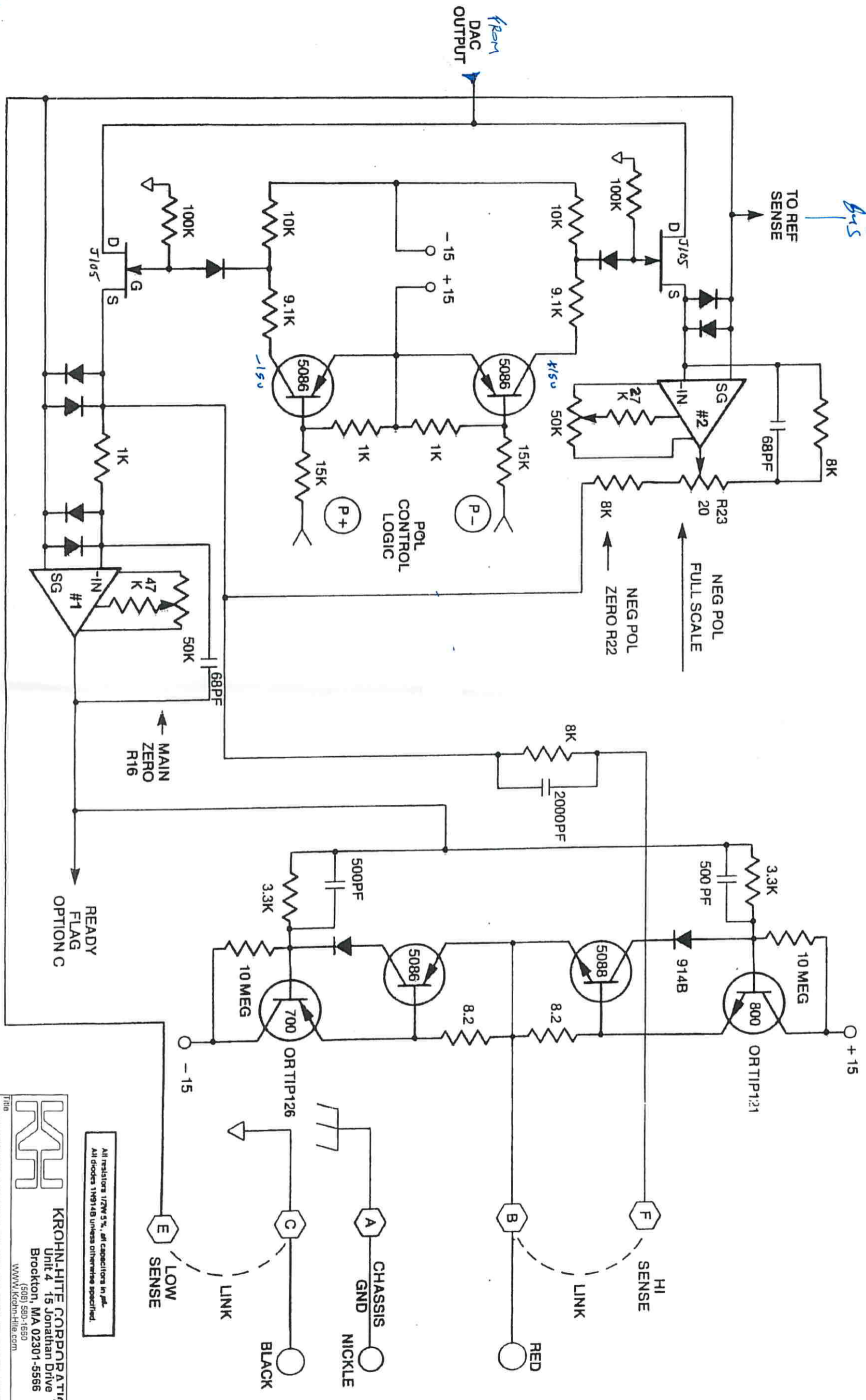
BCD	BINARY
R33-1.22K	700
R34-1.22K	546
R35-1.22K	548
R36-1K	470
R37-49.3K	76.8K
R13-20	200
R14-20	200

All resistors 1/2W 5%, all capacitors in  $\mu$ F  
All diodes 1N914B unless otherwise specified.

**KROHN-HITE CORPORATION**  
Unit 4 15 Jonathan Drive  
Brockton, MA 02301-5566  
(508) 560-1550  
www.krohn-hite.com

**501 DAC REFERENCE**  
B-2750-A

Size Document Number Rev  
Date Wednesday, April 03, 2002 Sheet 1 of 1



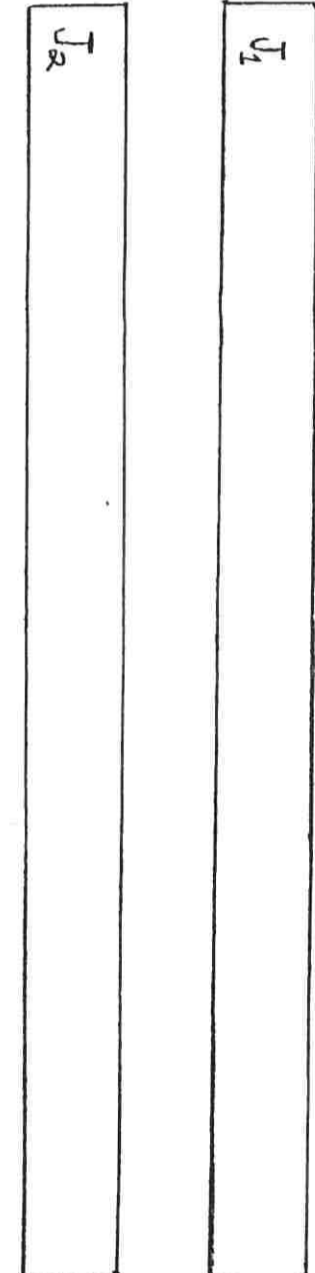
All resistors 1/2W 5%, all capacitors in  $\mu$ F.  
All diodes 1N914B unless otherwise specified.

**KROHN-HITE CORPORATION**  
Unit 4, 15 Jonathan Drive  
Brookton, MA 02301-5566  
(508) 550-1550  
www.krohn-hite.com

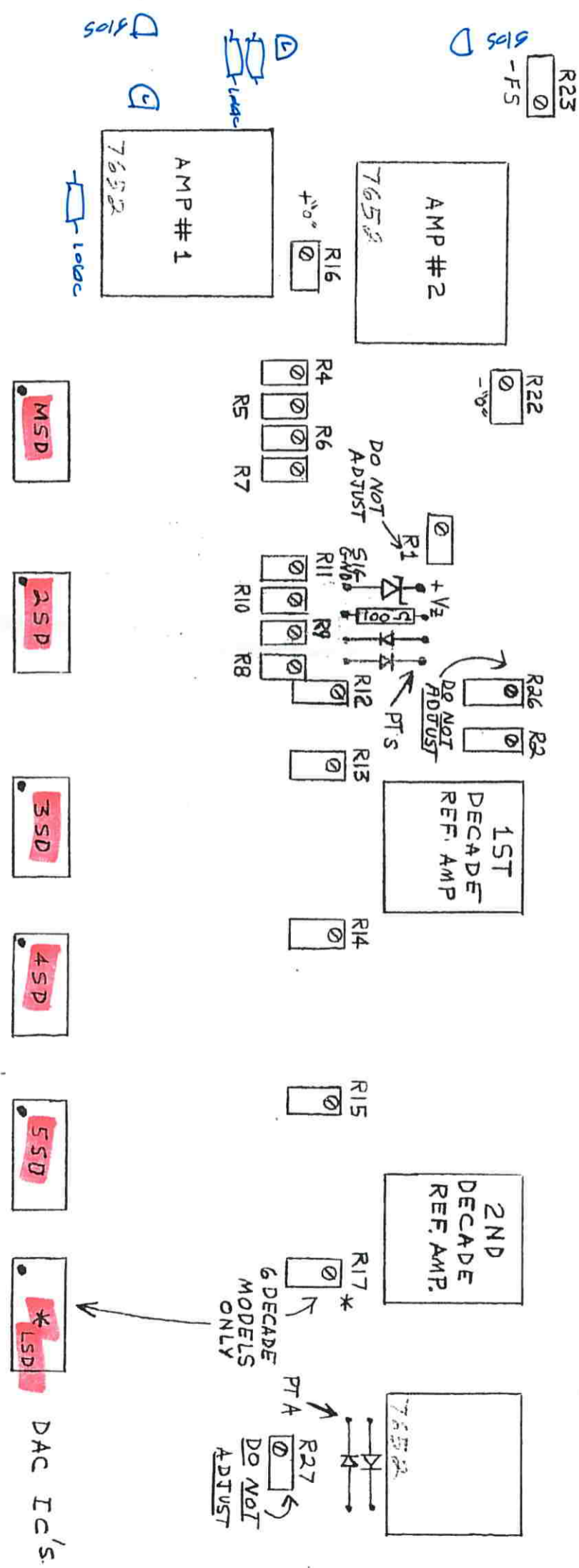
Title		501 BIPOLAR VOLTAGE OUTPUT AMPLIFIER	
Size	Document Number	B-2750-B	
Date:	Wednesday, April 03, 2002	Sheet	1 of 1

5125  
D S G  
e b c

MV fs Adj  
 R25



ALL BOARDS MTD. WITH COMPONENTS FACING FRONT. EXCEPT IS40 OPTOISOLATORS FACING REAR. BOTH J1 + J2 MVS HAVE COMPONENT BOARD OR DUMMY BOARD P-2756/7



- MSD
- 2SD
- 3SD
- 4SD
- 5SD
- \* LSD

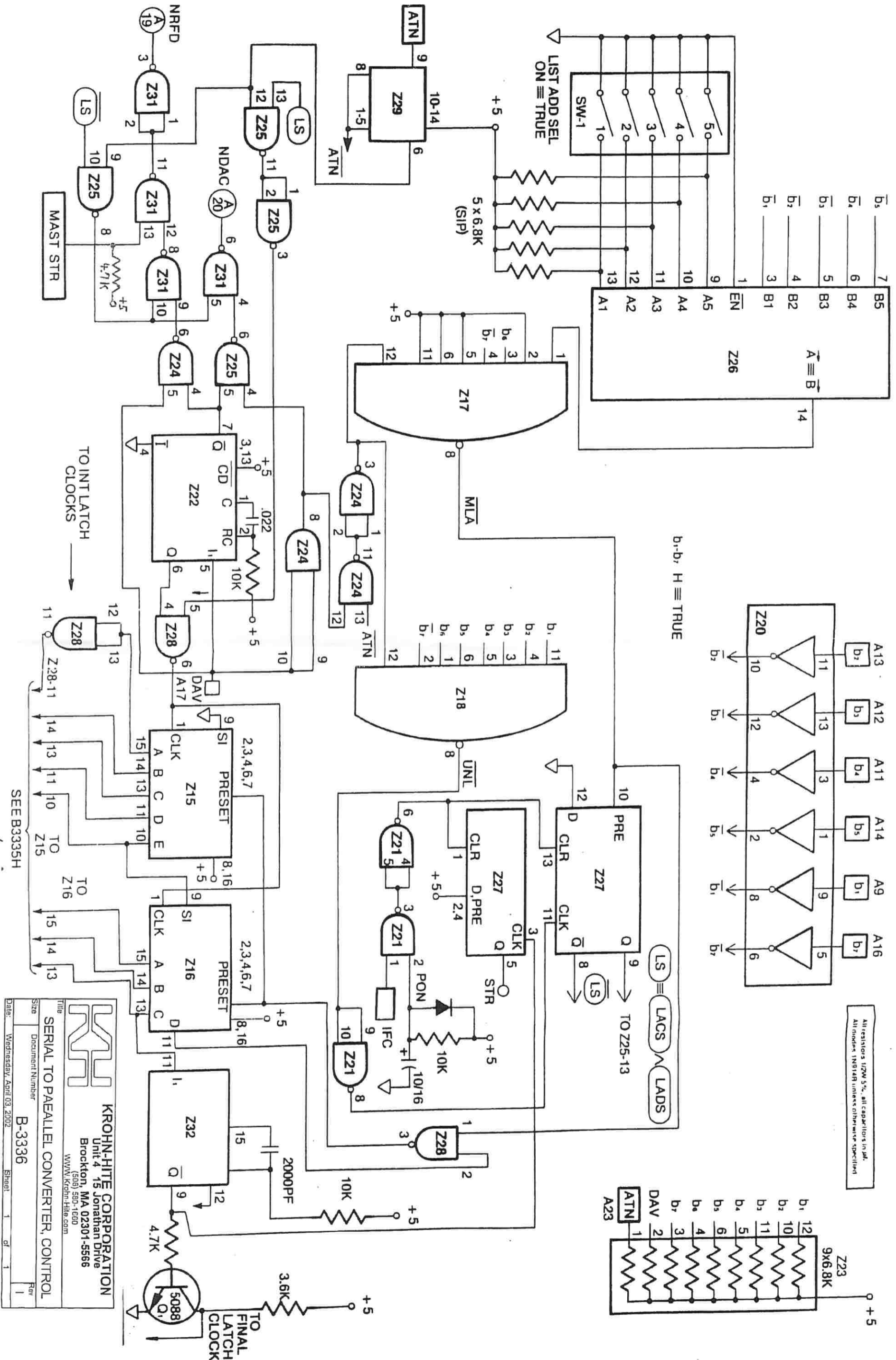
DAC IC'S

\* OMITTED ON SOME MODELS

FRONT

Logic 5086

<b>KROHN-HITE CORPORATION</b> Unit 4 15 Jonathan Drive Brockton, MA 02301-5566 (508) 349-1000 WWW.KROHN-HITE.COM	
Title	501 ADJUSTMENTS & TEST POINTS
Size	Document Number B-2791
Date	Wednesday, April 03, 2002
Sheet	1 of 1
Rev	C



All resistors 1/2W 5%, all capacitors in  $\mu$ F.  
All index (NRFD) lines otherwise specified.

**KROHN-HITE CORPORATION**  
 Unit 4, 15 Jonathan Drive  
 Brockton, MA 02301-5566  
 (508) 590-1600  
 WWW.KrohnHite.com

**SERIAL TO PARALLEL CONVERTER, CONTROL**

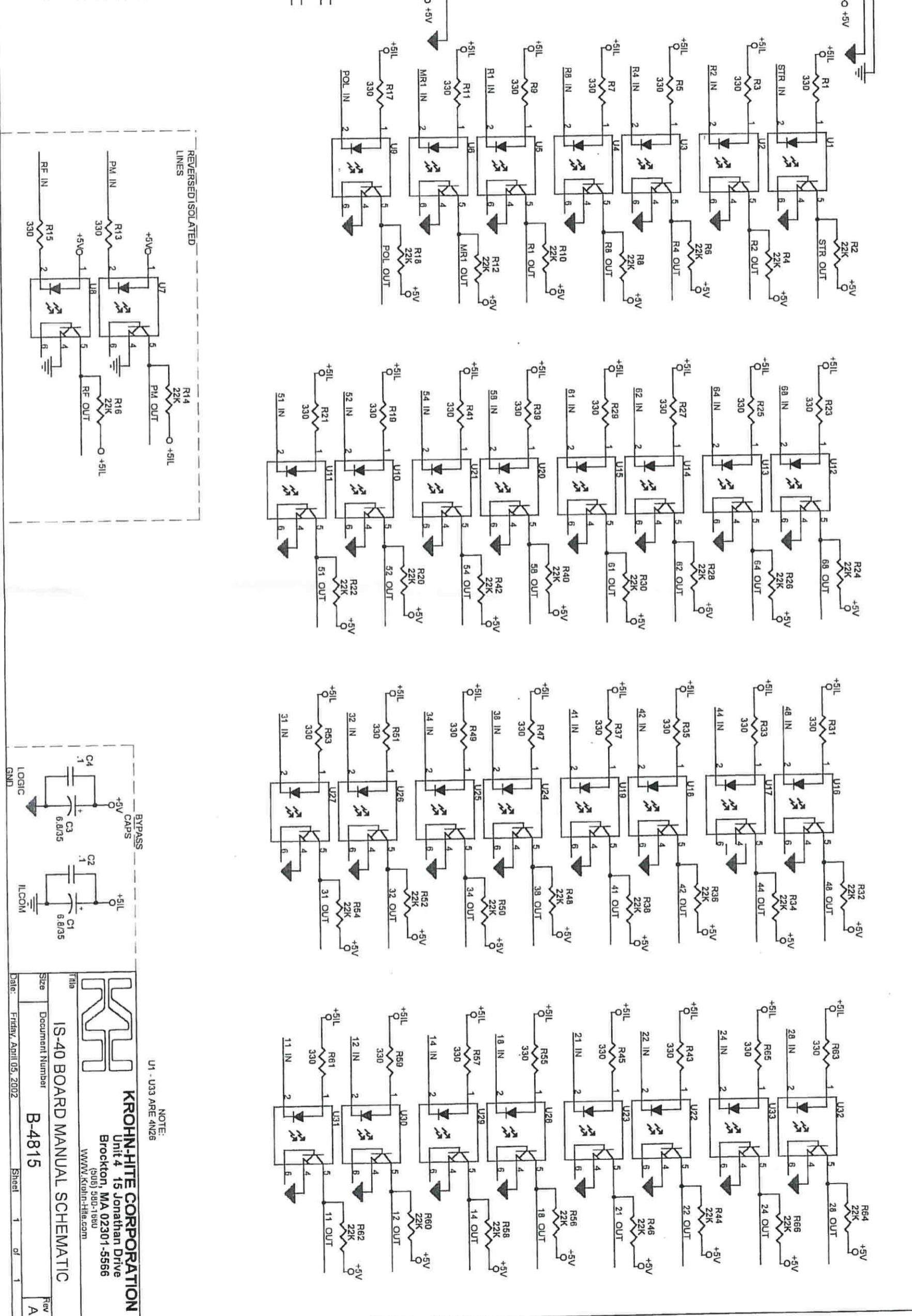
Size: \_\_\_\_\_ Document Number: **B-3336** Rev: **1**

Date: Wednesday, April 03, 2002 Sheet: **1** of **1**

Handwritten notes: *147824R copy of UNR. 7-20-02*

BOARD EDGE CONNECTOR

1	JMP1	+5V
2		
3	R8 IN	
4	R4 IN	
5	R2 IN	
6		
7		
8		
9		
10		
11		
12		
13	PM OUT	
14	STR IN	
15	STR IN	
16	MR1 IN	
17	POL IN	
18	RF OUT	
19		
20		
21		
22		
23		
24		
25		
26		
27		
28		
29		
30		
31		
32		
33		
34		
35		
36		
37		
38		
39		
40		
41		
42		
43		
44		
45		
46		
47		
48		
49		
50		
51		
52		
53		
54		
55		
56		
57		
58		
59		
60		
61		
62		
63		
64		
65		
66		
67		
68		
69		
70		
71		
72		
73		
74		
75		
76		
77		
78		
79		
80		
81		
82		
83		
84		
85		
86		

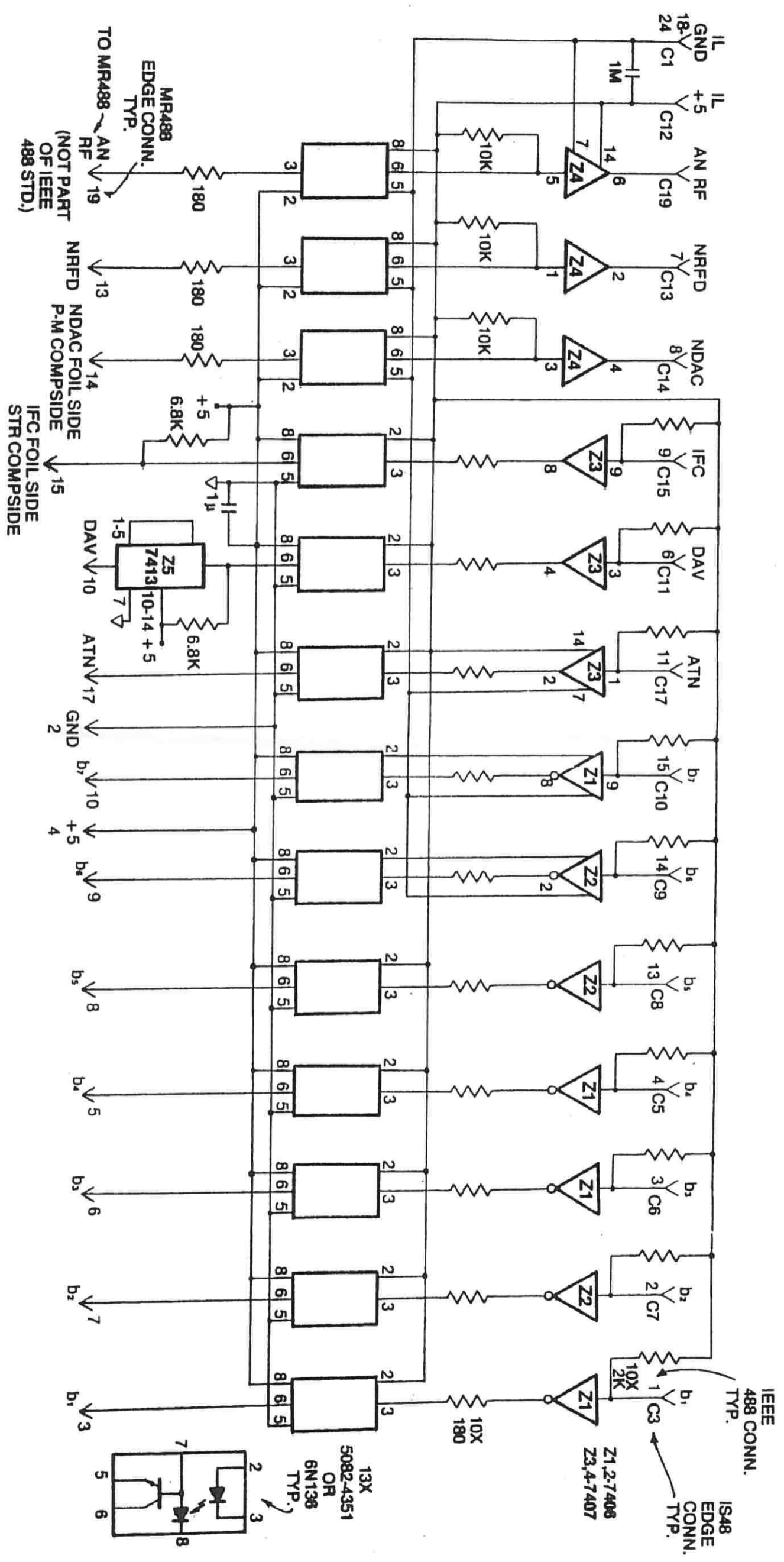


NOTE: U1 - U33 ARE ANZ8


**KROHN-HITE CORPORATION**  
 Unit 4 15 Jonathan Drive  
 Brockton, MA 02301-5566  
 (508) 560-1650  
 WWW.Krohn-Hite.com

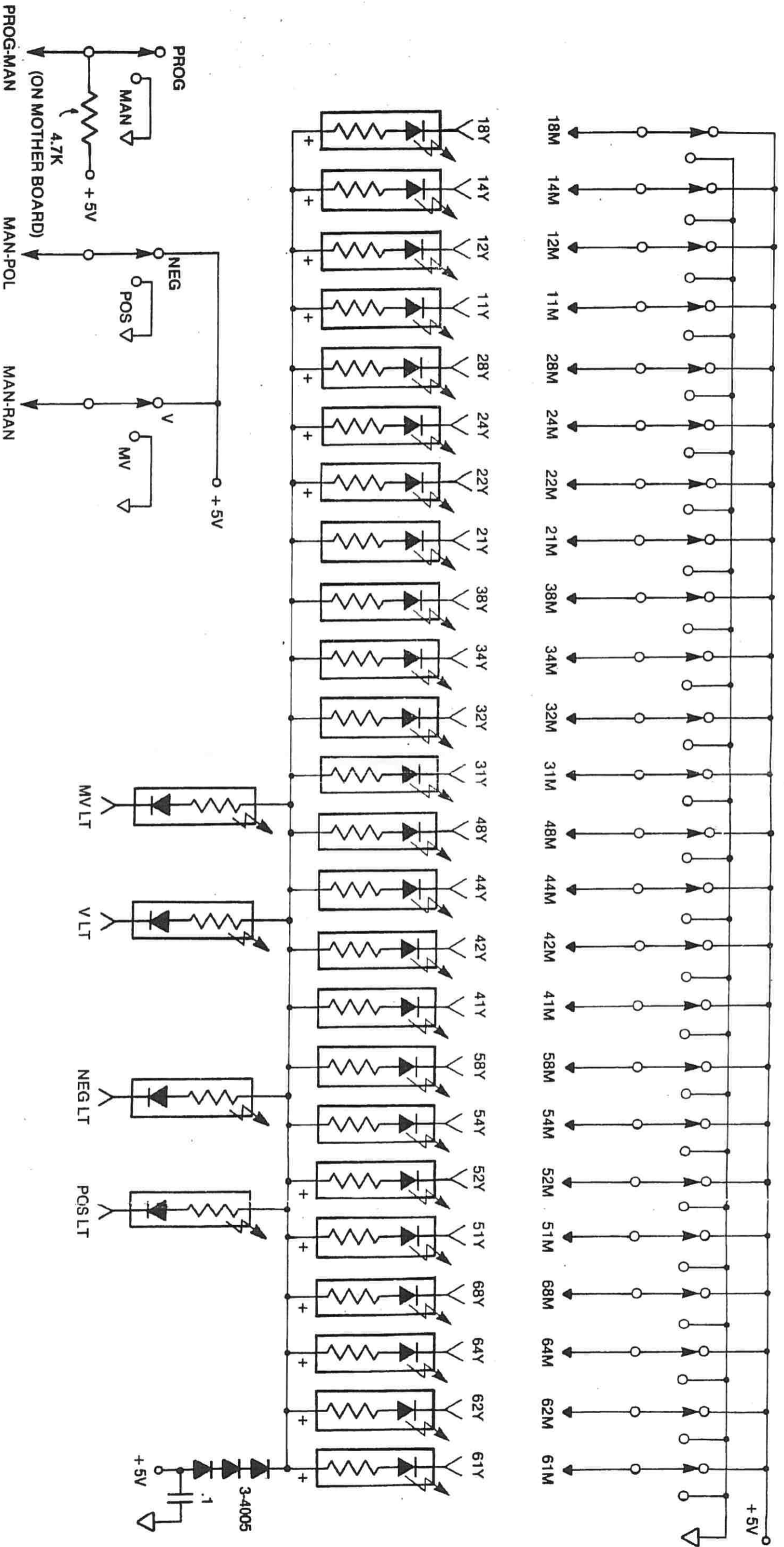
**IS-40 BOARD MANUAL SCHEMATIC**

File: \_\_\_\_\_  
 Size: \_\_\_\_\_  
 Document Number: **B-4815**  
 Date: Friday, April 05, 2002  
 Sheet 1 of 1



All resistors 1/2W 5%, all capacitors in  $\mu$ F.  
All diodes 1N914B unless otherwise specified.

	
<b>KROHN-HITE CORPORATION</b> Unit 4, 15 Jonathan Drive Brockton, MA 02301-5566 (508) 580-1660 WWW.Krohn-Hite.com	
Title	IS-48 OPTOISOLATOR BOARD
Size	Document Number
Date: Wednesday, April 03, 2002	B-2995
Sheet 1 of 1	Rev F

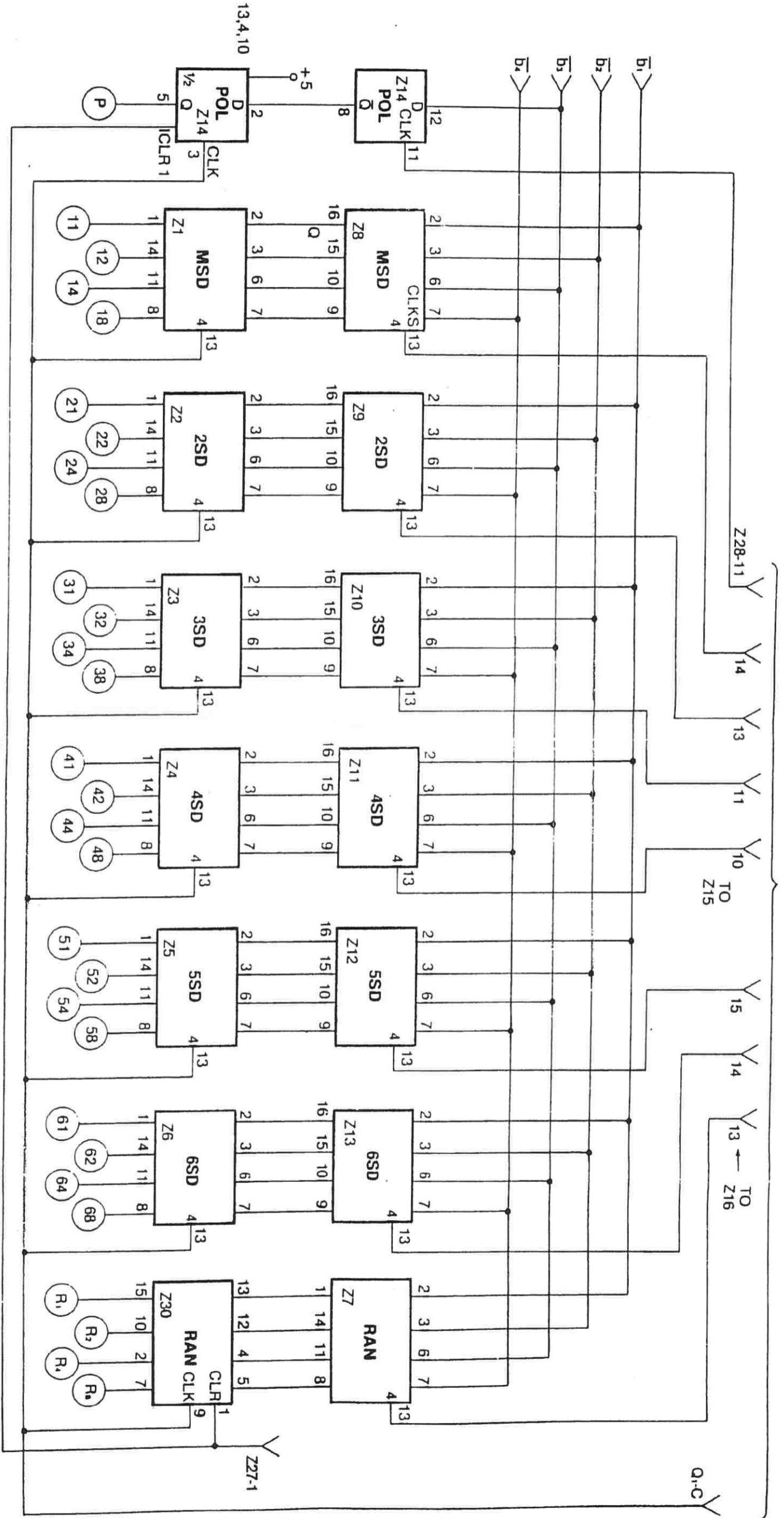


All resistors 1/2W 5%, all capacitors in  $\mu$ F.  
 All diodes 1N914B unless otherwise specified.

**KROHN-HITE CORPORATION**  
 Unit 4, 15 Jonathan Drive  
 Brockton, MA 02301-5566  
 (508) 380-1600  
 WWW.KROHN-HITE.COM

Title: **BIPOLAR DAC DATA CONTROL & INDICATOR LIGHT BRD**  
 Size: \_\_\_\_\_ Document Number: **B-2751** Rev: \_\_\_\_\_  
 Date: **Wednesday, April 03, 2002** Sheet: **1** of **1**

SEE B3336H



All resistors 1/2W 5%, all capacitors in µfd.  
All diodes 1N4148 unless otherwise specified.

SW-1 CONTROL SWITCH SL1007

Z#	Z TYPE	QND PIN	I/O PIN
1,13	74/75	12	5
15,16	7406	12	5
17,18	74LS30	7	14
20	7404	7	14
22	9602	7	16
23	SPH916CBR2	NONE	16
24,25	X2 PE	7	14
21,28	7400	7	14
26	9324	7	14
27	7474	7	14
29	7413	7	14
30	7415	7	14

□ - INPUTS  
○ - OUTPUTS



**KROHN-HITE CORPORATION**  
Unit 4, 15 Jonathan Drive  
Brockton, MA 02301-5566  
(508) 580-1650  
www.krohnhite.com

**SERIAL TO PARALLEL CONVERTER, LATCHES**

Title: SERIAL TO PARALLEL CONVERTER, LATCHES  
Size: Document Number: B-33335  
Date: Wednesday, April 03, 2002 Sheet: 1 of 1 Rev: H