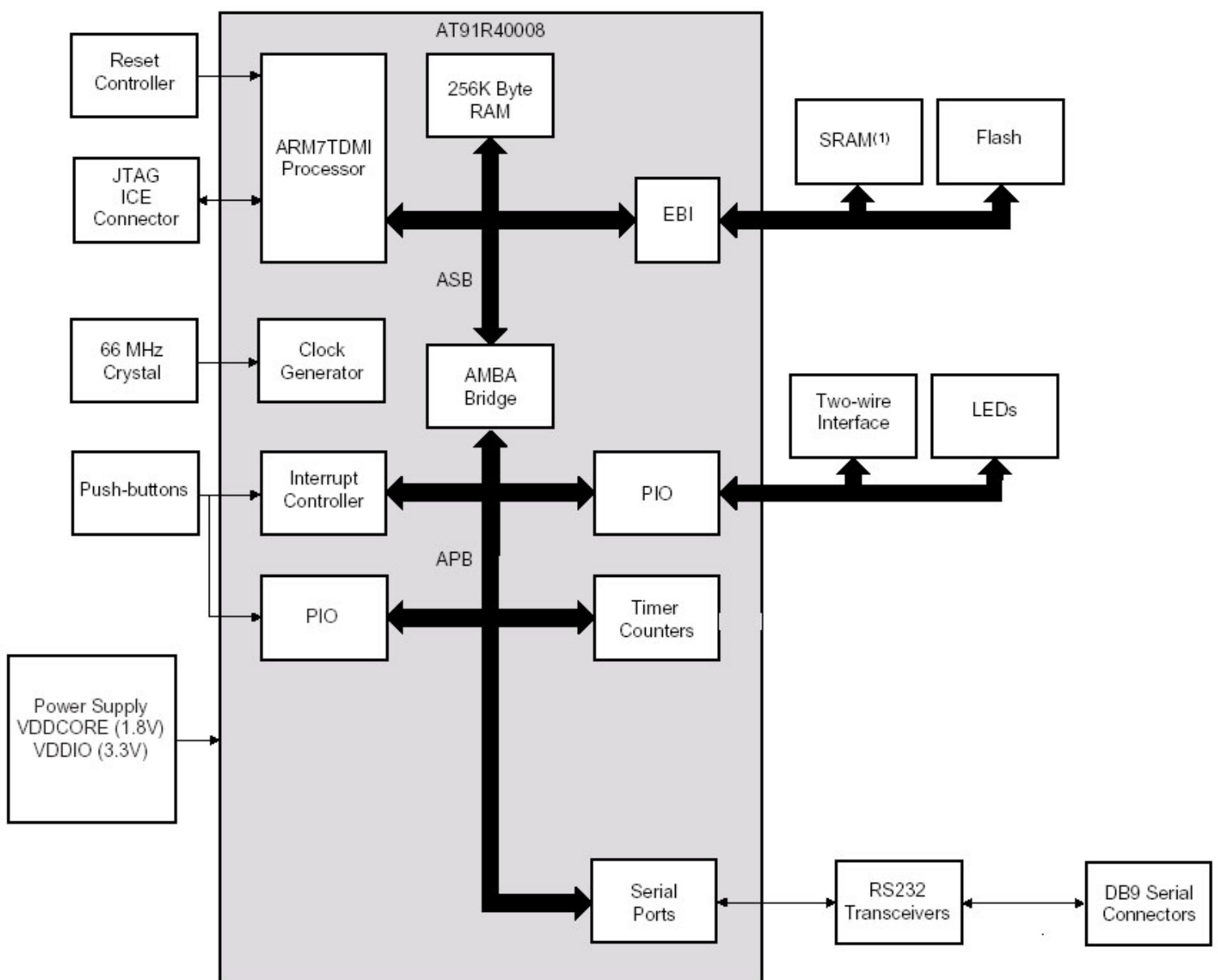


## Embest ATEB40x Evaluation Board

The Embest ATEB40x Evaluation Board enables real-time code development and evaluation. It supports the AT91x40 series with its various memory options. The Embest ATEB40x Evaluation Board is comprised a mother board and a daughter board. The daughter board is a microcontroller core board, it can be:

- an AT91M40800 daughter board, with 8K Bytes of On-chip SRAM
- an AT91R40807 daughter board, with 136K Bytes of On-chip SRAM
- an AT91R40008 daughter board, with 256K Bytes of On-chip SRAM
- an AT91FR40162 daughter board, with 256K Bytes of On-chip SRAM and 1024K Words 16-bit Flash Memory

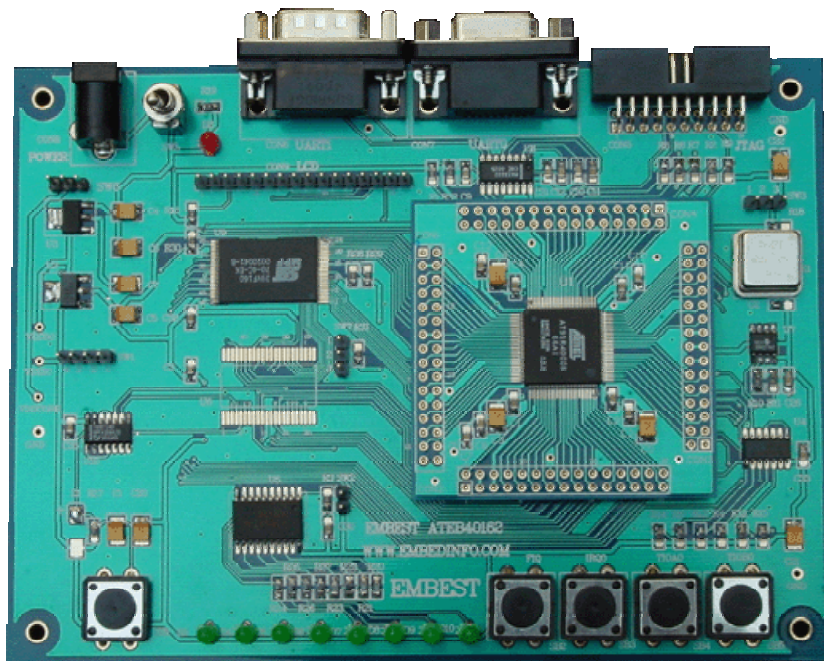
### Functional Block Diagram



## General Specification

- Evaluation Board based on AT91x40 series
- 5.0V DC-only power supply
- Two serial ports
- Reset push button
- Four user-defined push buttons
- Eight LEDs
- A footprint of a 256-KB 16-bit SRAM (upgradeable to 512K Bytes)
- 1-MB 16-bit Flash
- 512K Bytes of EEPROM with two-wire interface access (controlled by a software twowire interface)
- 16-pin LCD expansion connectors
- 20-pin JTAG interface connector

## Photo of the Embest ATEB40x Evaluation Board



## Deliverables

The evaluation board is delivered with a DB9 plug-to-DB9 socket straight-through serial cable to connect the target evaluation board to a PC. A bare power lead with a 2.1 mm jack on one end for connection to a bench power supply is also delivered.

The evaluation board is also delivered with CD-ROM:

- user manual with circuit schematic drawing
- Atmel at91 C library
- Boot software and test software
- uCos source tree
- samples code

The evaluation board is capable of supporting different kinds of debugging systems, using an ICE interface.

**Embest Info&Tech Co.,LTD.**

Room 509, Luohu Science&Technology Building,  
#85 Taining Rd., Shenzhen, Guangdong, China 518020

Tel: +86-755-25635656

Fax: +86-755-25616057

Email: [market@embedinfo.com](mailto:market@embedinfo.com)

<http://www.embedinfo.com>

