

Embest IDE Pro for ARM 2005

1.1 About Embest IDE Pro for ARM2005

Embest IDE Pro for ARM2005 is a new release of Embest IDE for ARM based on 2004 version. It is an Integrated Development Environment for software cross-development with powerful functions. This software tool has 30 days evaluation period for customers' probation and you can enjoy its full functions and surely to be your good selection. It provides an efficient way for developing embedded applications. You can complete all your software development tasks with Embest IDE including project management, editing, compiling, debugging and flash programming. Embest IDE comprises the following elements and Figure 1-1 shows the complete development environment:

- An integrated development environment.
- Project management facility.
- Integrated source-code editor.
- GNU compilers, assembler and linker.
- GNU ansi C library.
- Also supports ARM build tools
- Source-level debugger.
- ARM instruction set simulator.
- Tools for elf to bin / disassemble / Flash programmer/ RDI Plug-In / split bin.
- Source code examples for Atmel/Samsung/Cirrus logic/OKI /... arm-core processors
- Online document

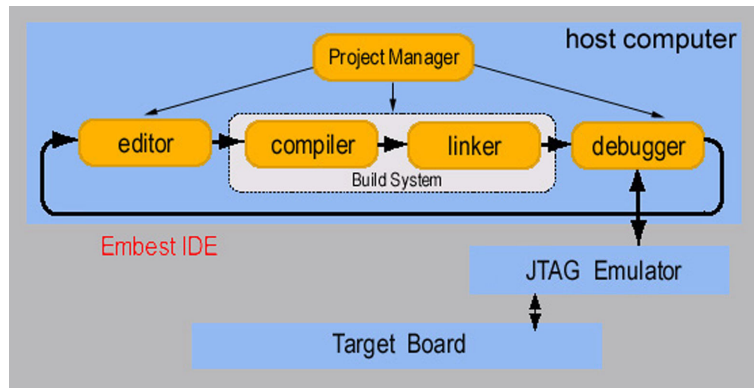


Figure 1-1: Embest IDE Tools

Embest IDE uses host-target cross model for developing embedded applications. Embest IDE runs on the host computer that connects the target board through debug device (JTAG Emulator). You can edit and build your projects on the host, and create a target executable file with Embest IDE. Download the target file to the target, and then use Embest IDE debugger to debug it through the communication of debug device connected between the host computer and the target board. Figure1-2 illustrates the host-target cross model with Embest IDE.

When you use Embest IDE for ARM, a debug device——Embest JTAG Emulator or PowerICE is provided.

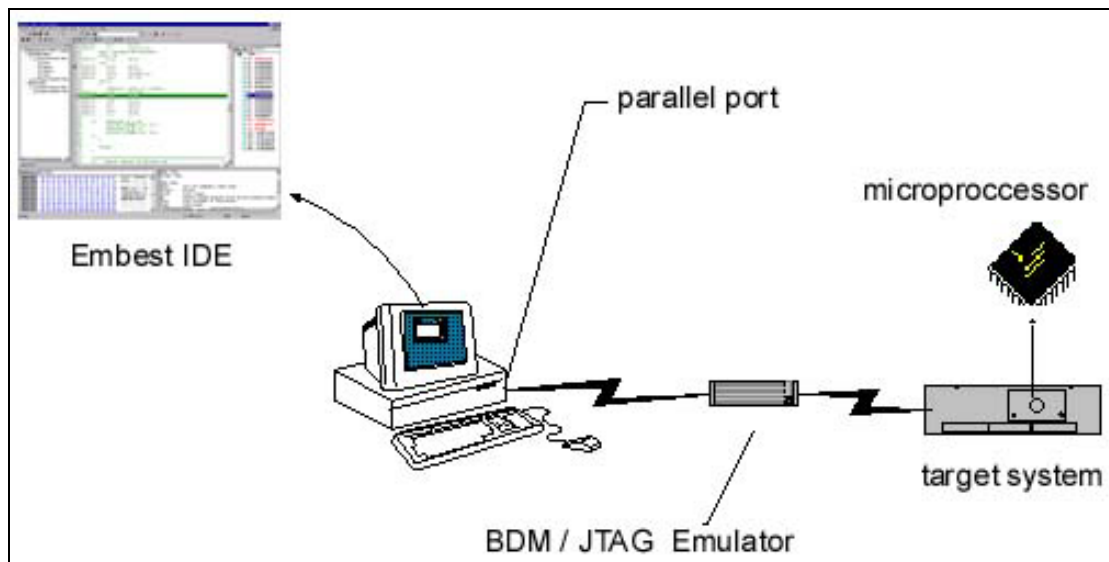


Figure 1-2 the Host-target Cross Model with Embest IDE

1.2 Major Features of Embest IDE

Embest IDE runs under Windows98 and Windows NT 4.0 above. Embest IDE supports target microprocessors debugging on the ARM-core microprocessor families. Embest IDE provides a simple,

versatile and graphical user interface for managing your software development projects. You can use Embest IDE for ARM to develop C and ARM assembly language code targeted at ARM and Thumb processors. It speeds up your development cycle by providing:

- Comprehensive project management capabilities
- Code navigation routines to help you locate routines quickly.

Embest IDE enables you to organize source code files, library files, other files, and configuration settings into a project. Each project enables you to create and manage multiple configurations of build target settings.

Major features of Embest IDE:

- Support development language: ANSI C, ARM assembly language.
- User interface: consists of an integrated set of windows, tools, menus, toolbars, directories, and other elements that allow you to create, test, and refine your application. It is just like Microsoft Visual Studio's user interface.
- Source code Editor: Standard text manipulation capabilities; C and ASM syntax-element color highlight; Debugger integration, the editor window tracks code execution; Compiler integration, the project management utility links compiler warnings and errors directly to the affected source in the editor window. Support file print; Capable of search and replace, and performs batch searches in multiple files.
- Project Management: The Embest IDE project facility simplifies organizing, configuring, and building embedded applications. It includes graphical configuration of the build environment (including compiler flags).

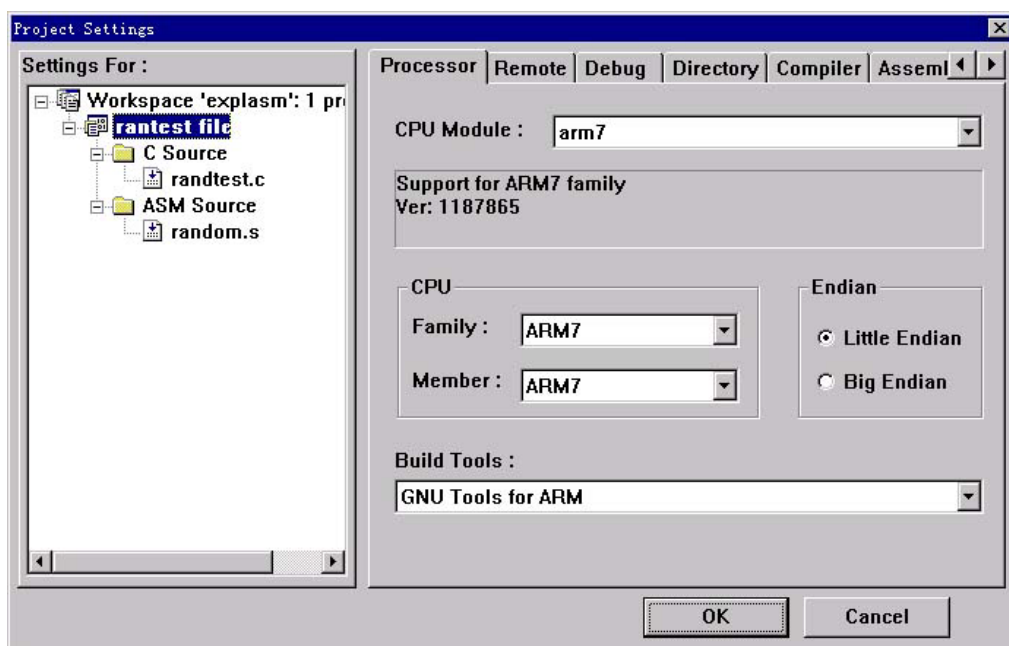


figure 1-3 Project settings dialog box

- **Compiler:** includes the GNU compiler, as well as a collection of supporting tools that provide a complete development tool chain: cpp, C preprocessor; gcc, C compiler; make, program building automation tool; ld, programmable static linker; as, portable assembler; binary utilities. Embest IDE supports commercial versions of the leading-edge GNU tools originally developed by the Free Software Foundation (FSF). Users of the GNU tools benefit from the innovative FSF development environment as well as from testing and support by Embest Info&Tech Co., LTD. Among other features, the Embest IDE project facility provides a GUI for the GNU tools that is powerful and easy to use.

- **Embest IDE debugger:** a powerful graphical debugger that enables program loading, executing, running control, and monitoring; a source-level debugger, view your application code as C, as assembly-level code, or in a mixed mode that shows both; full-featured debugging, provides an exhaustive set of debugging features, designed to make it easy to find and fix bugs; set a breakpoint or clear a breakpoint by single click, supports conditional and command breakpoints; single stepping, "step into" traces execution of every individual instruction even when functions are called, "step over" does not trace into the called function, "step out " brings execution back to the calling function; supports register and variables value display and modify, supports function stack display and memory display, several specialized windows display these debugging information. Figure 7-1 shows these debugging information display windows, when you are debugging, you can access these windows using the "View" menu; Embest IDE supports graphical debug and command-line debug. For complex or unpredictable debugging needs, the command-line interface gives you full access to a wealth of specialized debugging commands.

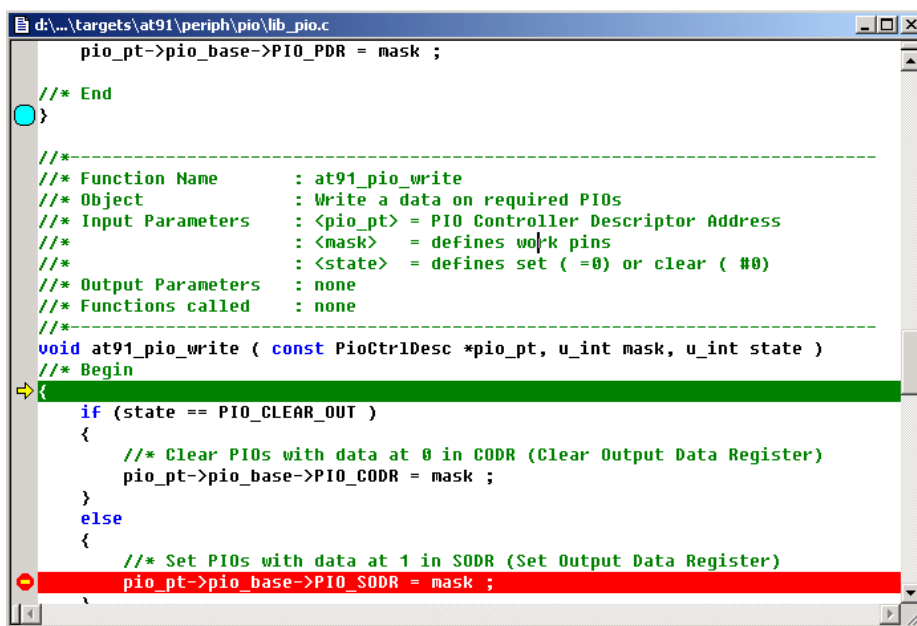


figure 1-4 debugging show

Embest IDE Pro for ARM 2005 has expanded functions based on version 2004 mainly in following aspects:

- Supports 30 days evaluation period with full functions. After 30 days, the software is invalid; customers should apply for license to continue using.
- Supports stand-alone PC license and is able to bounded with hard disc number or user name. Do not bound to any eigencode license is also supported for local area using.
- Supports floating license. License server can manage stand-along PCs which are in one local area and supervise the using status.
- Debugging symbolic information files support Dwarf1 and Dwarf2 and is able to use Embest IDE plus emulator to debug uClinux and Linux kernel.
- Supports customer hardware and software breakpoints setting, viewing and changing and commands adding.
- Supports Cygwin1.dll using Cygwin 1.5.10-3. Cygwin 1.5.10 was released on May 2004 and so it is consistent with linux and uclinux compiling environment.
- Now Embest Emulator for ARM and Embest PowerICE for ARM can also support ARM926EJ and ARM946 series.

1.3 User Interface of Embest IDE

The user interface is the portion of the environment where display information and specify action. These topics describe user interface's basic structure of Embest IDE.

To step into Embest IDE, just run Embest IDE.exe. Embest IDE user interface consists of an integrated set of windows, tools, menus, toolbars, directories, and other elements that allow you to create, test, and refine your application. Figure 1-5 shows the main GUI of Embest IDE. The user interface uses standard Windows interface functionality along with a few additional features to make your development environment easy to use. The basic features that you use most often are windows and document views, toolbars, menus, directories, and keyboard shortcuts.

Title column displays current opening file name. Menu column and tool bar column are below title column. The menu bar is a special toolbar at the top of the screen that contains menus such as File, Edit, and Build. The standard tool bar appears just below the menu bar. You can move the toolbars to different locations to suit your needs. Workspace window shows file information about current opening projects. Source code window is the usual used window witch you edit and browse your code in. You can open several source code file windows at one time. Output window displays build information, debug

information, file search output information and command-line debug input and output. Status column displays detail information about menus and tool bars, it also displays the current line number and column number of the cursor in source code window.

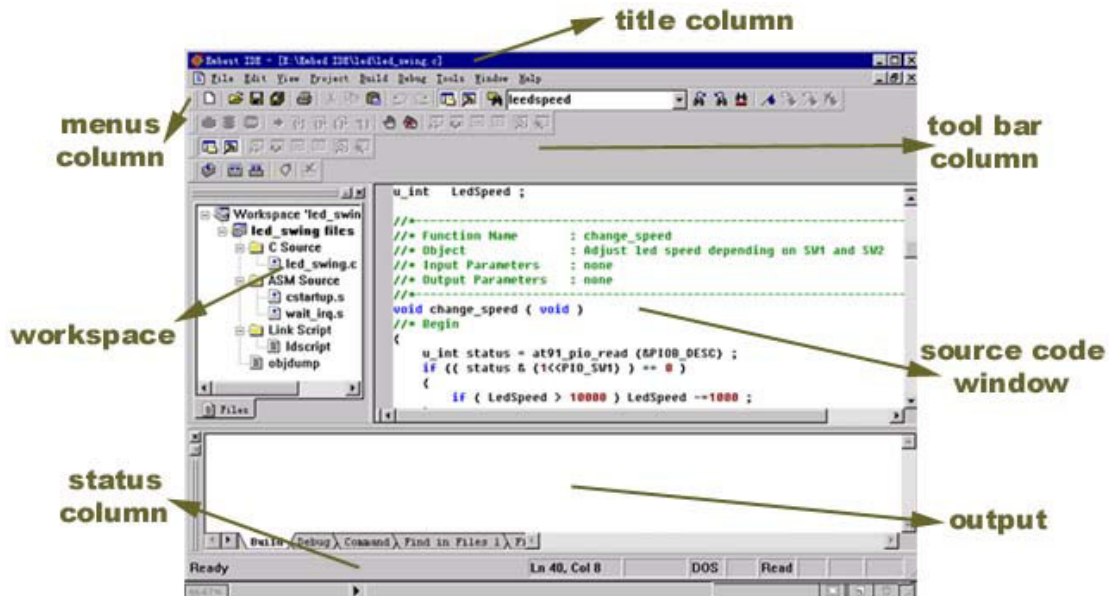


Figure 1-5 Embest IDE Main GUI

Embest Info&Tech Co.,LTD.

Room 509, Luohu Science&Technology Building,
#85 Taining Rd., Shenzhen, Guangdong, China 518020

Tel: +86-755-25635656

Fax: +86-755-25616057

Email: market@embedinfo.com

<http://www.embedinfo.com>

<http://www.armkits.com>

