


Home > Products > ... > 34970A Data Acquisition Control Mainframe and Modules >  
34825A BenchLink Data Logger 3 Software for 34970A/34972A [Arrêté] > Détails

 Discuter avec un expert

## Transferring Data and Configurations to a new version or to a new computer

Moving between computers with same version or moving configurations and data to a new version on the same computer:

You can also move selected configurations and their data (if you wish) over to the new computer by creating one or more package files. Each package file can contain one or more configurations with or without their data. See attachment for how to create a package file.

### Creating Package File for Upgrade to New Revision

On main menu, select Data, and then Data Manager as shown:



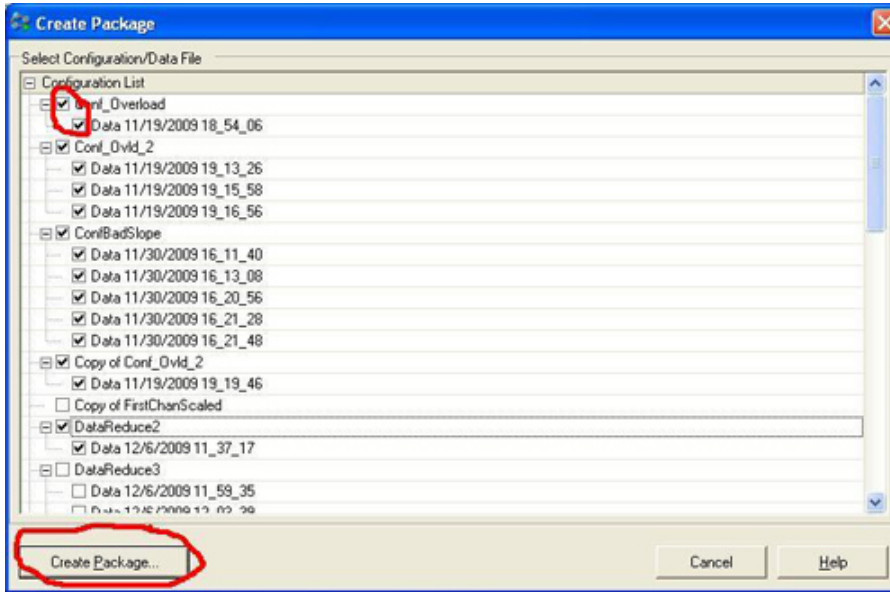
That will bring up a dialog box. Select Package on main menu and choose "Create" as shown below:



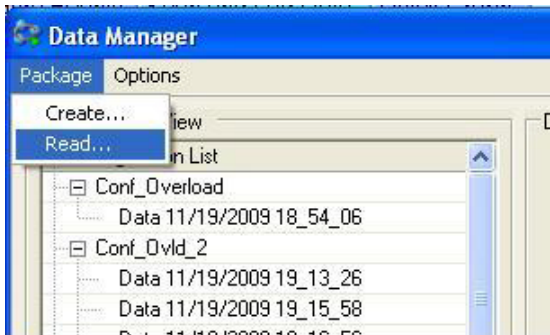
Then another dialog box comes up and you can select which configurations and which data files you wish to save. Place a check mark in the ones you wish to keep.








After selecting them, then press the "Create Package" button as shown.

NOTE: You can create more than one Package File if you wish.  
Create a directory to hold your package files and save this file to that directory.



After you save all of your data and configurations that you wish to keep, then you can un-install your current revision of Data Logger and upgrade to the new one. In the new revision, you can import the Package files for use by selecting again Data -> Data Manager in the menu. This time, though, you want to select: Package -> Read from the menu and specify the file location of the package file you wish to import.



	<b>myKeysight</b>	<b>Buy</b>	<b>Support Tasks</b>	<b>Legal</b>
	<a href="#">My Products</a>	<a href="#">How to Buy or Rent</a>	<a href="#">Manage Software Licenses</a>	<a href="#">Privacy</a>
	<a href="#">My Watchlist</a>	<a href="#">Request a Quote</a>	<a href="#">Find a Manual</a>	<a href="#">Terms</a>
	<a href="#">My Download History</a>	<a href="#">Find a Partner</a>	<a href="#">Update Firmware/Software</a>	<a href="#">Trademark Acknowledgements</a>
	<a href="#">My News</a>	<a href="#">See Special Offers</a>	<a href="#">Browse Application Notes</a>	
		<a href="#">Check Order Status</a>	<a href="#">Request Repair or Calibration</a>	
		<a href="#">View Trade-In Offers</a>	<a href="#">Check Warranty Status</a>	
		<a href="#">Browse Used Equipment</a>	<a href="#">Ask the Community</a>	
		<a href="#">Why Buy Keysight</a>	<a href="#">Find a Part</a>	

© Keysight Technologies 2000-2019 | [Feedback](#) | [Contact Keysight](#) [f](#) [in](#) [t](#) [v](#)