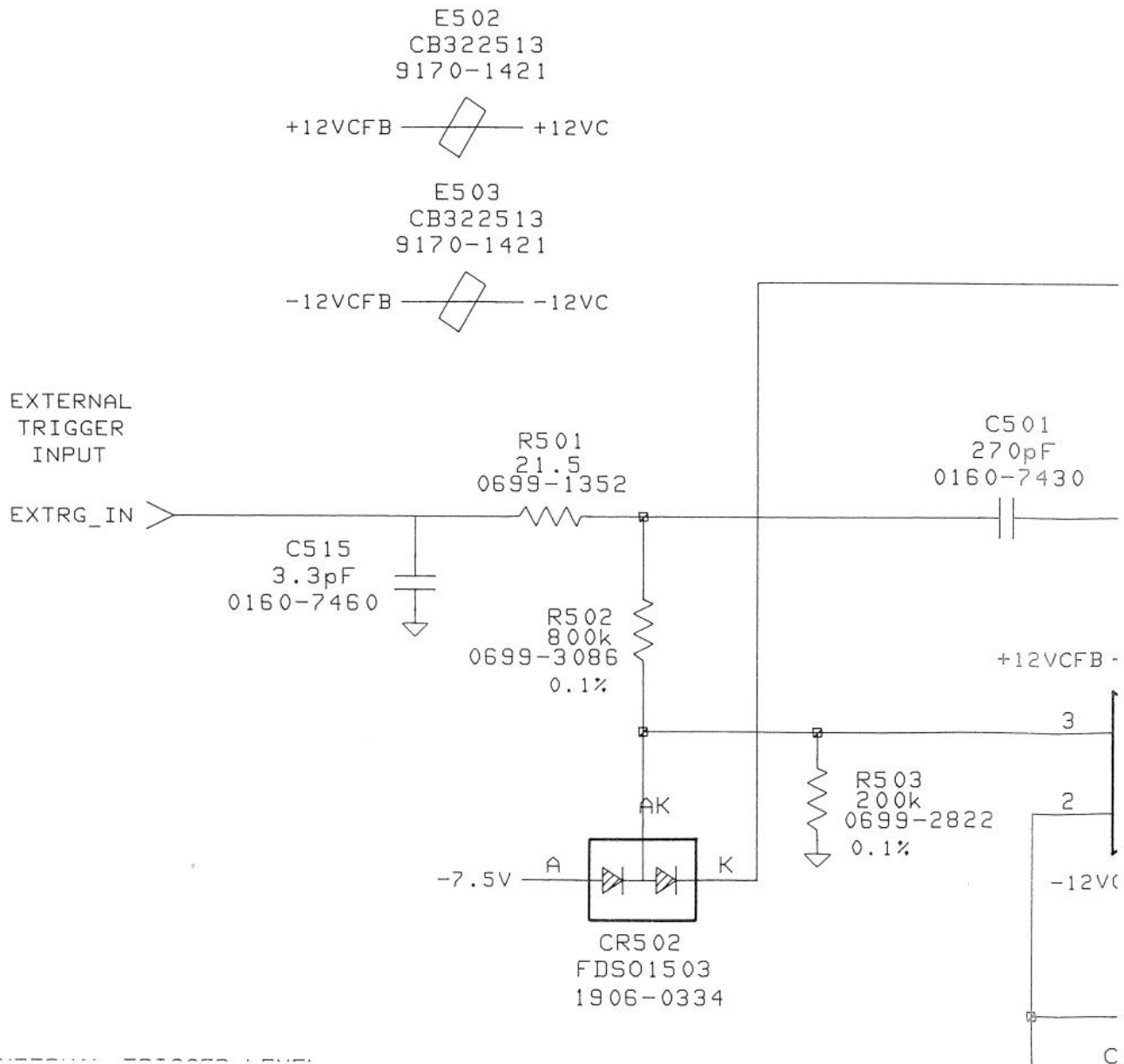


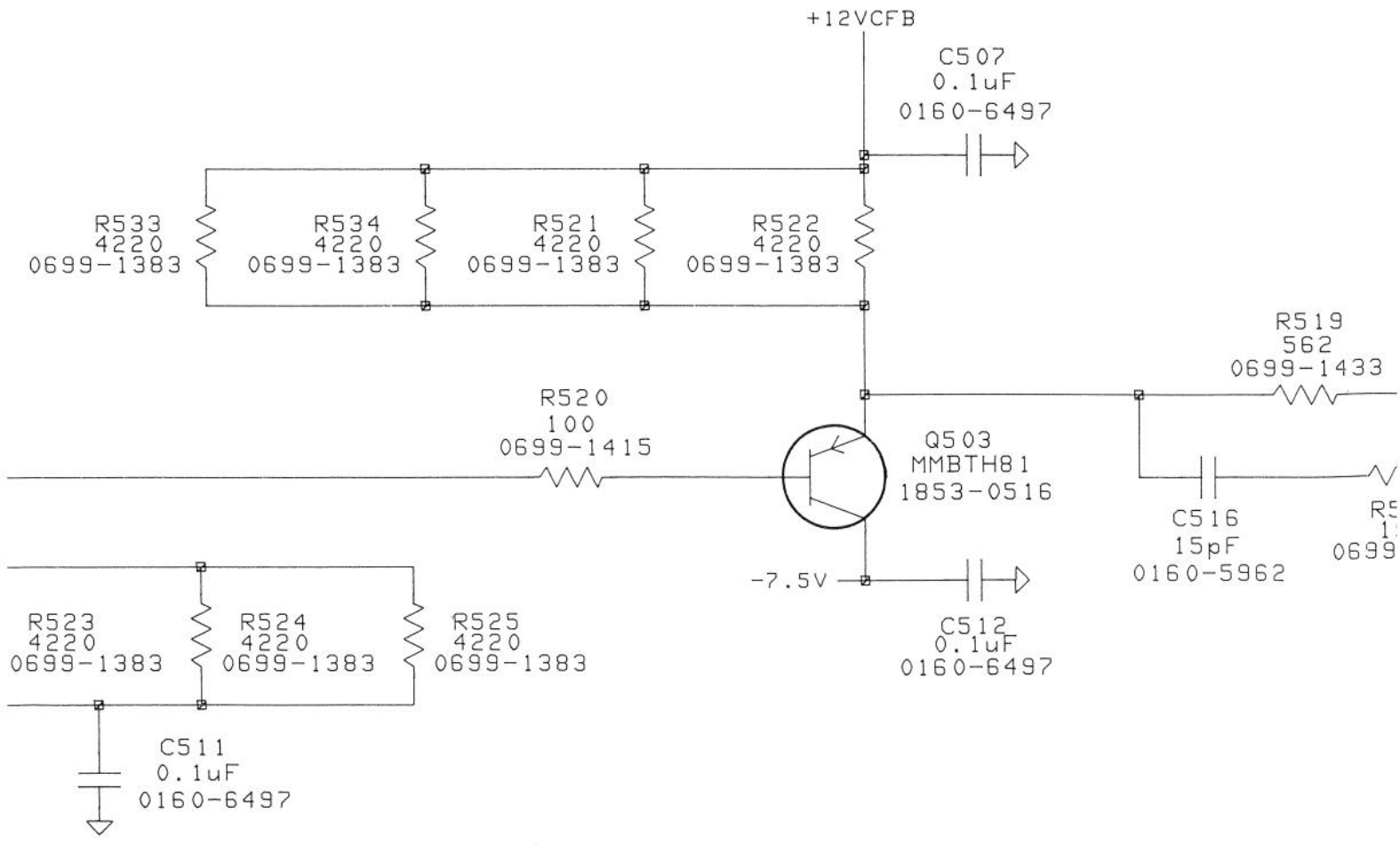
sheet 5 of 11  
page 1 upper





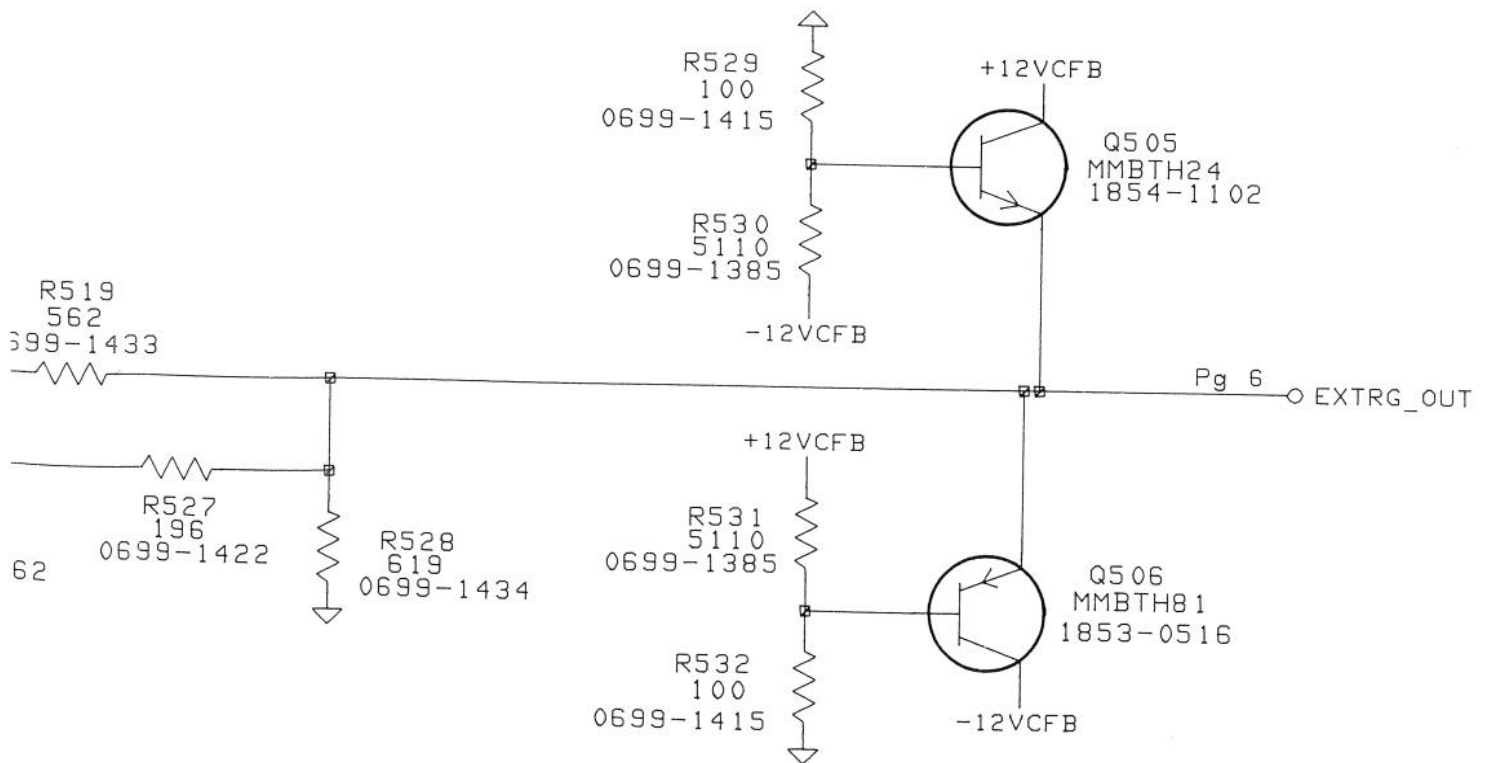
16	17		19		21	22
45	48	81	83	D2		

sheet 5 of 4  
page 3 upper

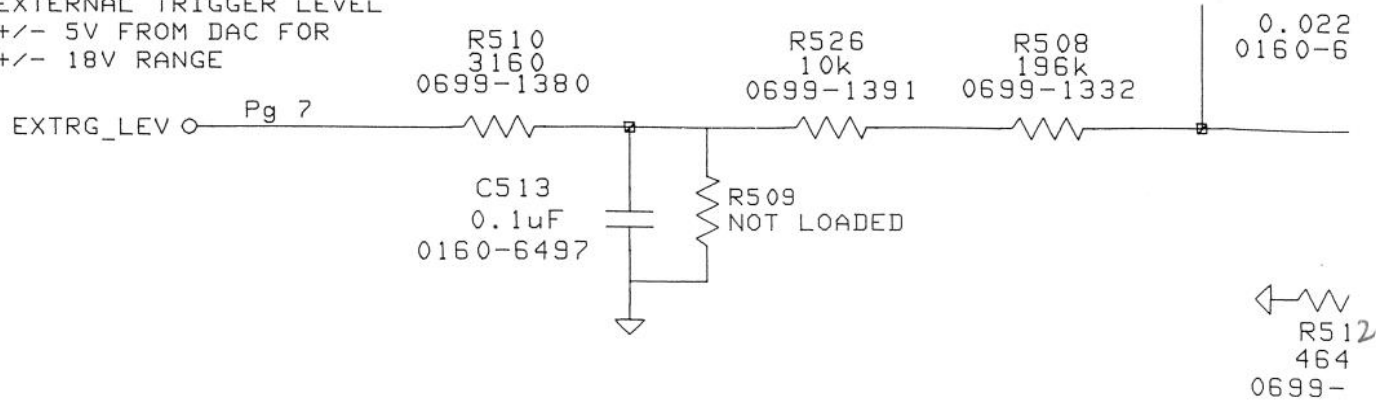


21	22	29	30	32	33	38	43	SYM	REVISIONS	U-54600-66
								A	AS ISSUED	APPROVED
										JS

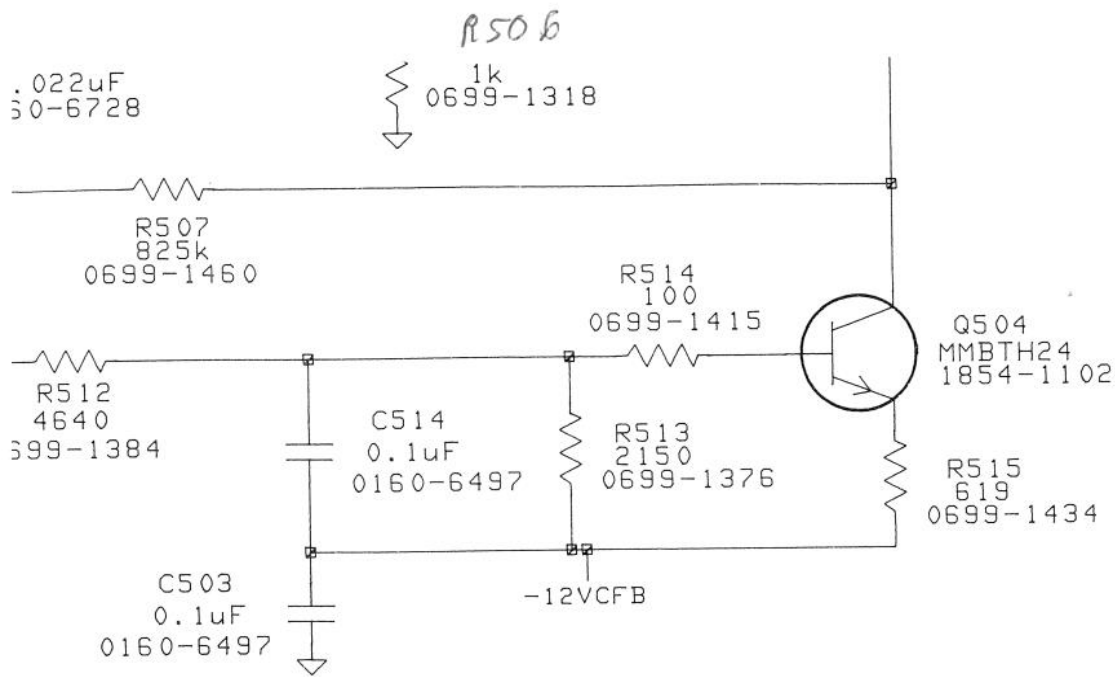
sheet 5 of 11  
page 4 upper



EXTERNAL TRIGGER LEVEL  
+/- 5V FROM DAC FOR  
+/- 18V RANGE



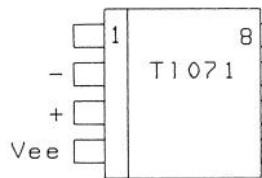
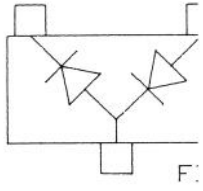
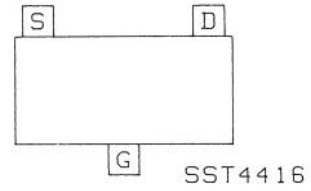
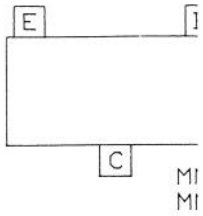
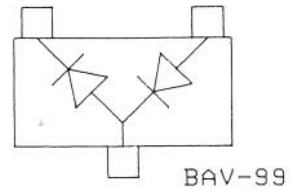
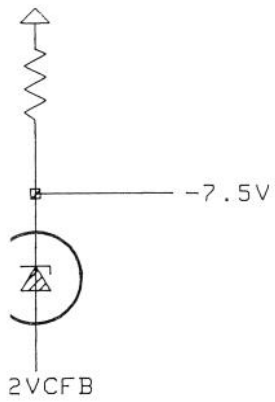
sheet 5 of 11  
page 1 lower



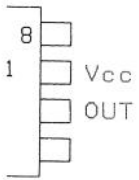
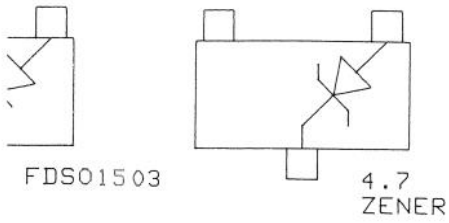
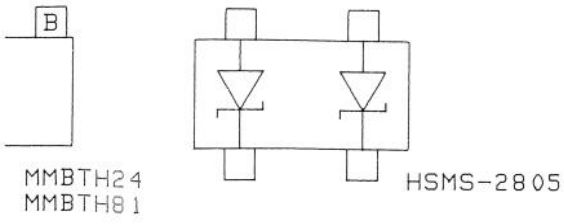
$R51$   
133  
0699-13

CR505  
4.7V  
1902-156

sheet 5 of 11  
~~page 3 to~~  
 page 2 lower



sheet 5 of 11  
page 3 lower



*sheet 5 of 11*

*page 4 lower*

DRAWN BY	JIM STRINGER	DATE	6/27/91
ENGINEER			

VERTICAL  
SYSTEM



HEWLETT  
PACKARD