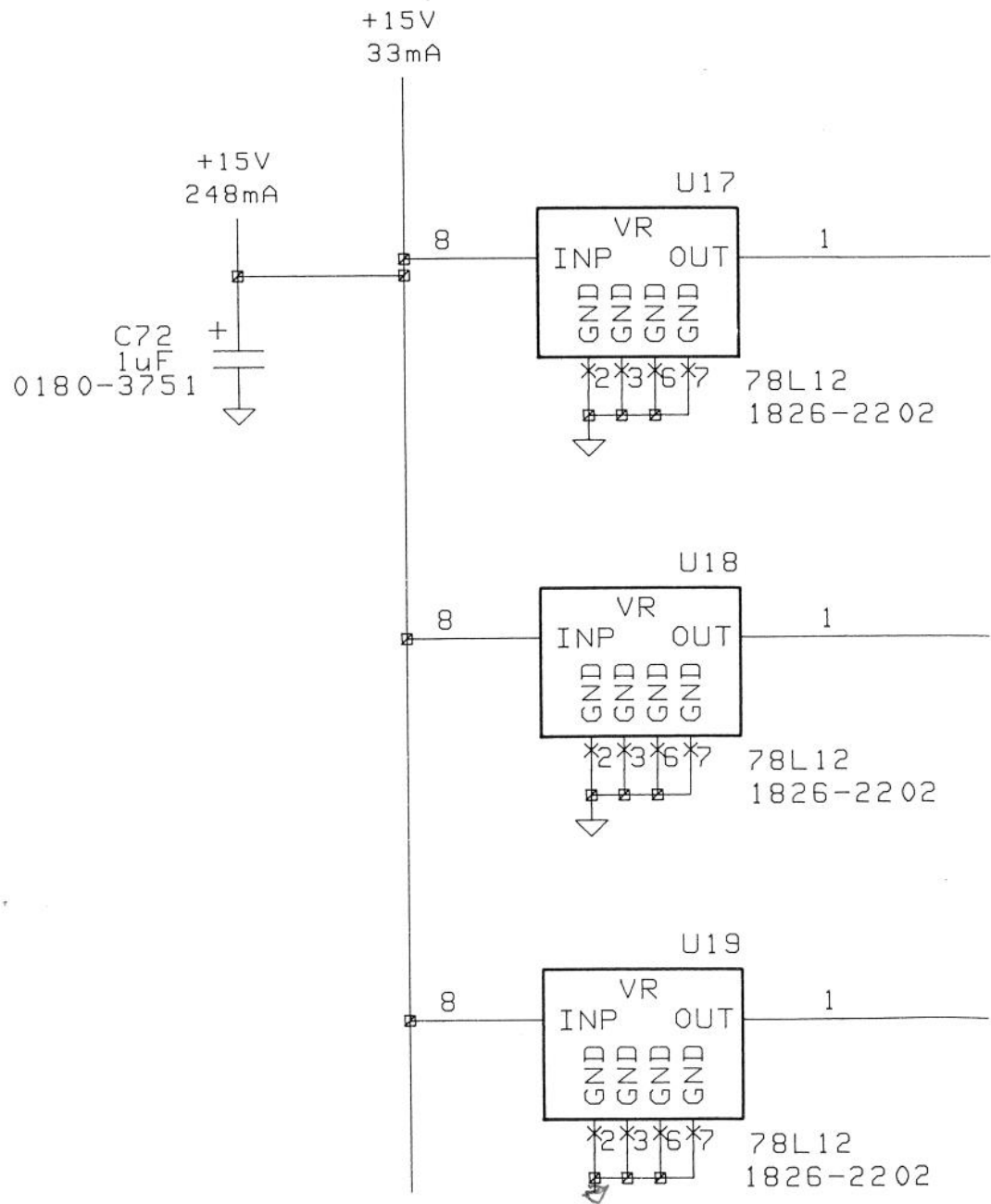


sheet 8 of 11

page 1 upper



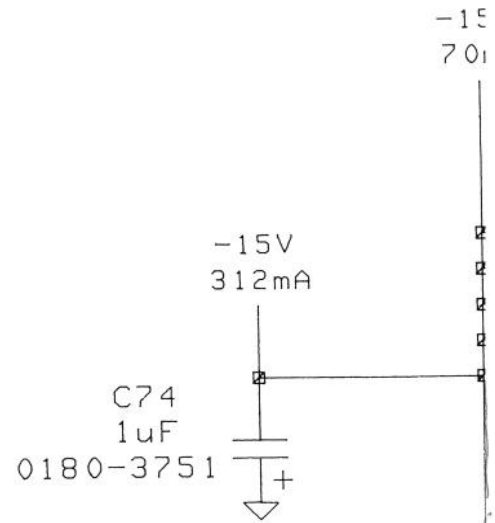
sheet 8 of 11

page 2 upper

————— +12VA
59mA

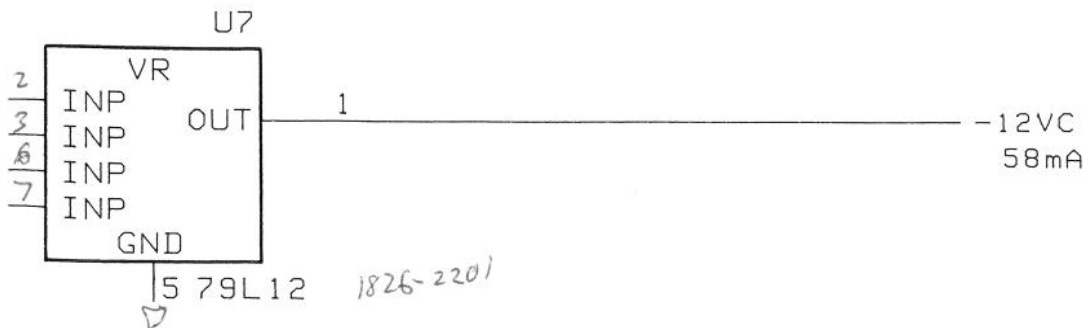
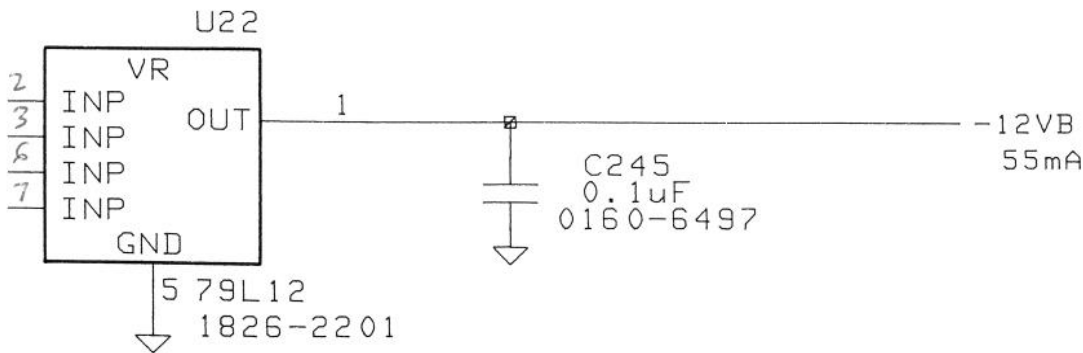
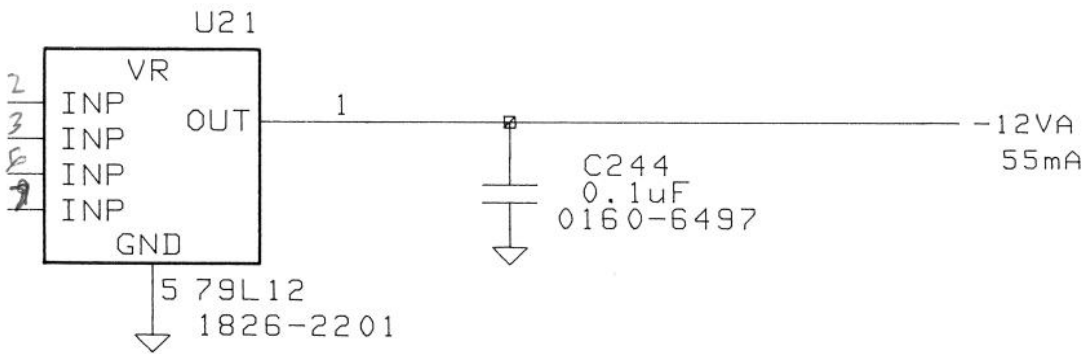
————— +12VB
59mA

————— +12VC
58mA



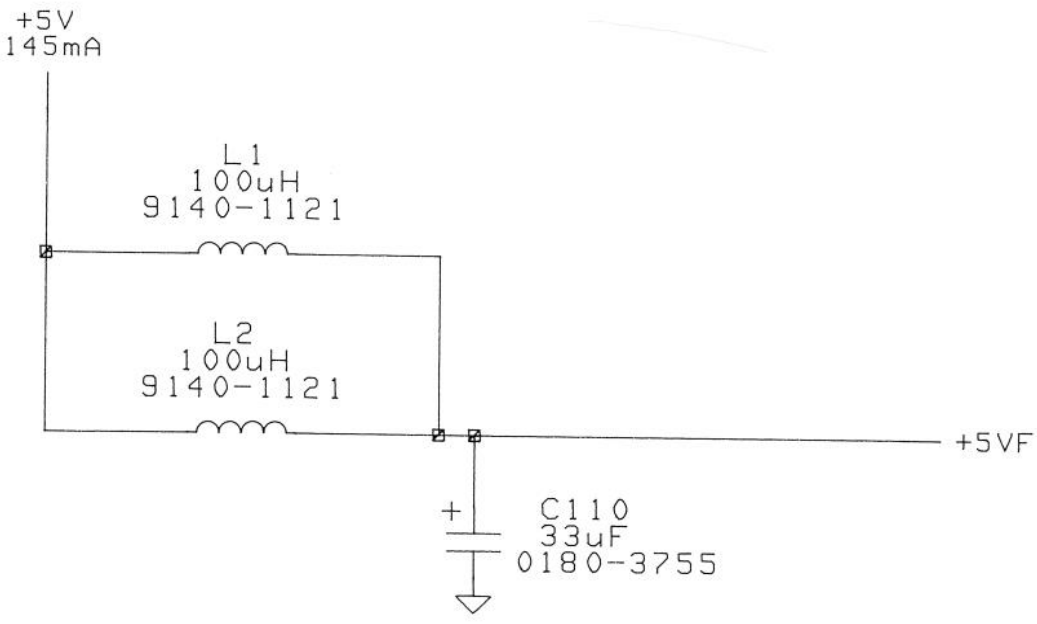
0	1	2	3	4		08
16	17		19		21	22
45	48	81	83	D2		

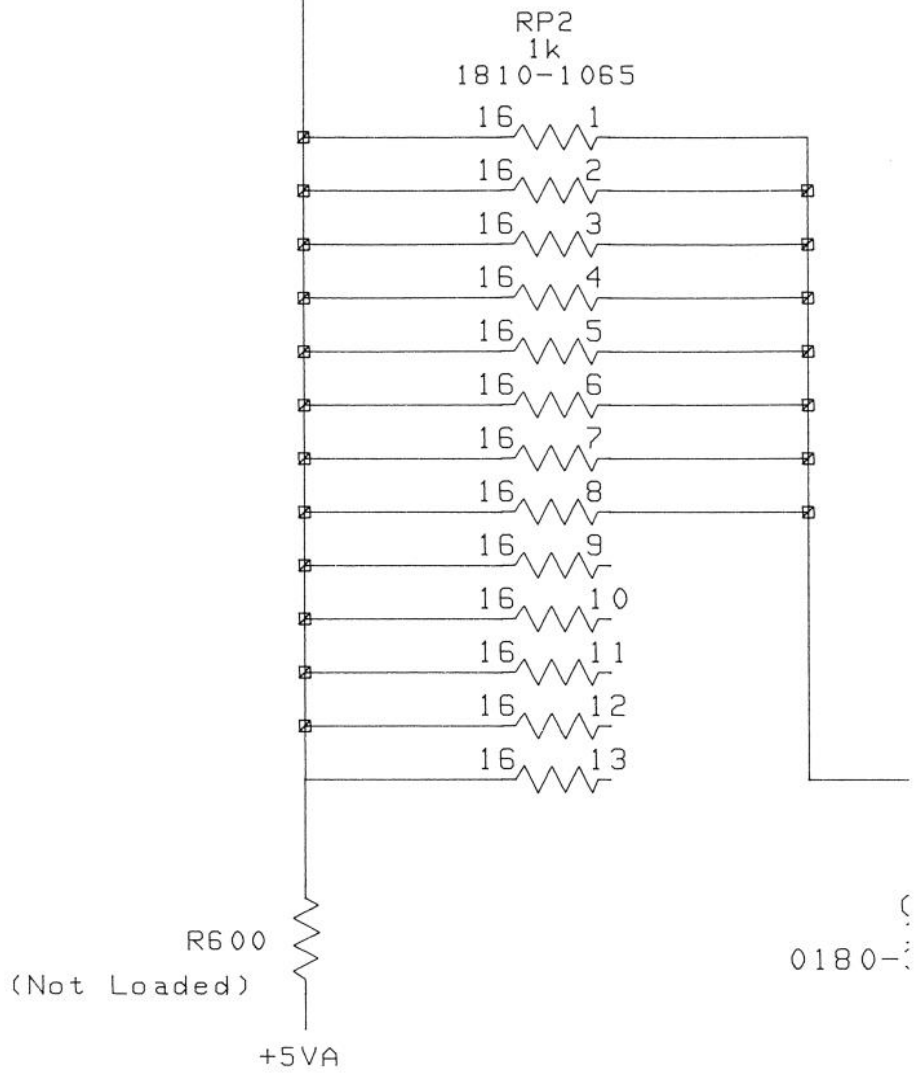
sheet 8 of 11
page 3 upper



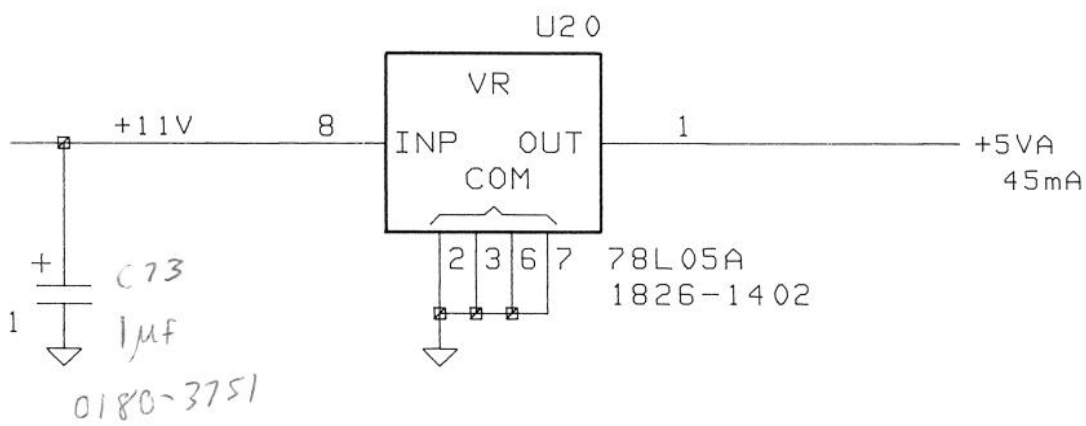
9		11	12	14	15		D-54600-66501-3		
29	30	32	33	38	43	SYM	REVISIONS	APPROVED	DATE
						A	AS ISSUED	JS	

sheet 8 of 11
 page 4 upper

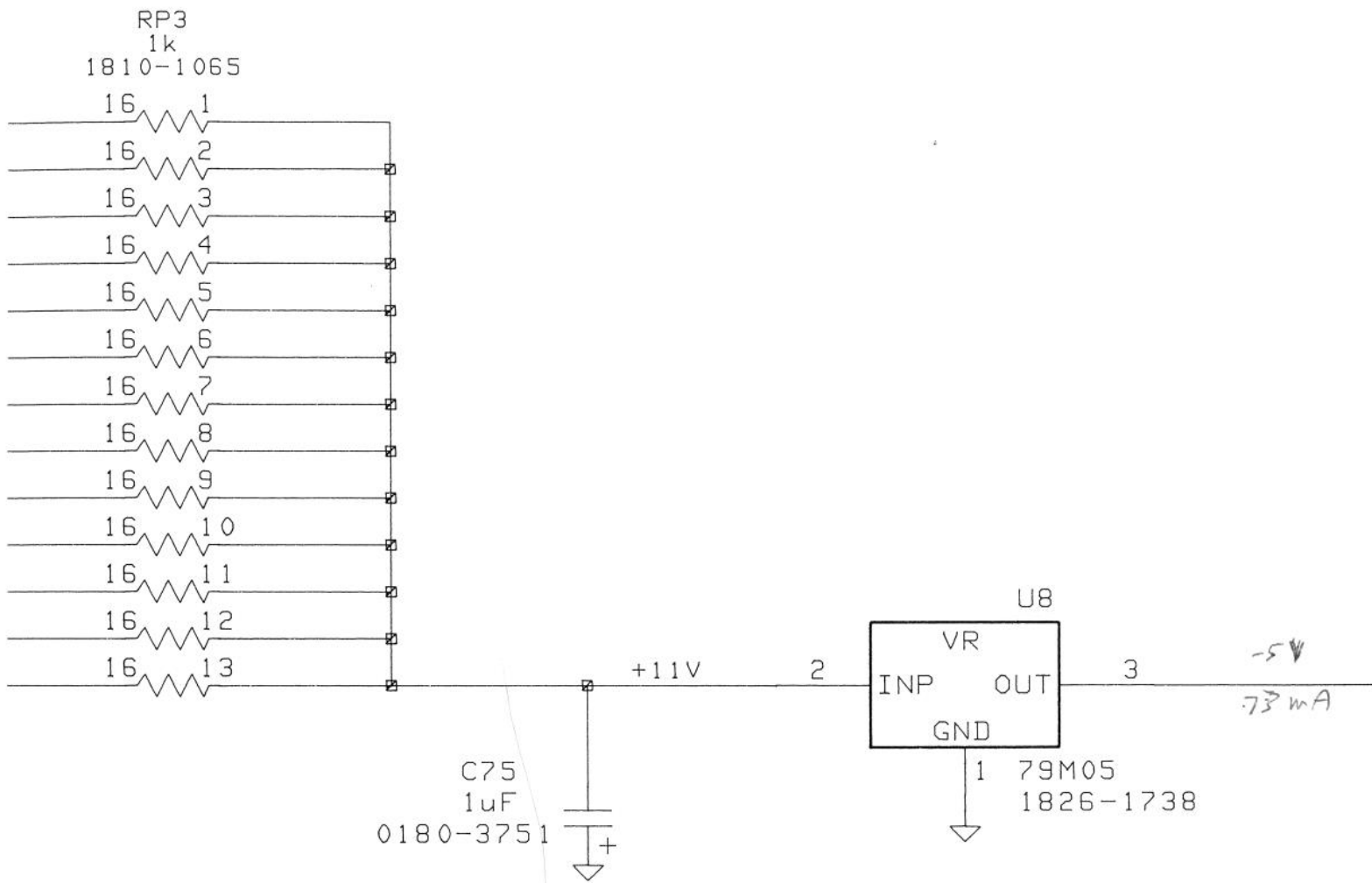




sheet 8 of 11
page 1 lower



sheet 8 of 11
page 2 lower



sheet 8 of 11
page 3 lower

Parts on this schematic:

C72-75, 110, 244, 245

L1, 2


R603

RP2,3

U7, 8, 17-22

A
mA

*Sheet 8 of 11
page 4 lower*

DRAWN BY JIM STRINGER	DATE 6/27/91	POWER		 HEWLETT PACKARD
ENGINEER				
RELEASE TO PROD.		TITLE	PART NUMBER	
APPROVED DWG.		SCALE	SHEET 8 OF 11	D-54600-66501-3