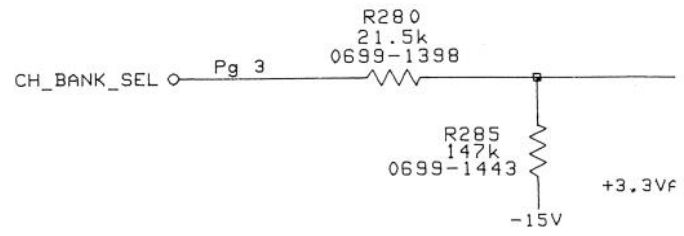
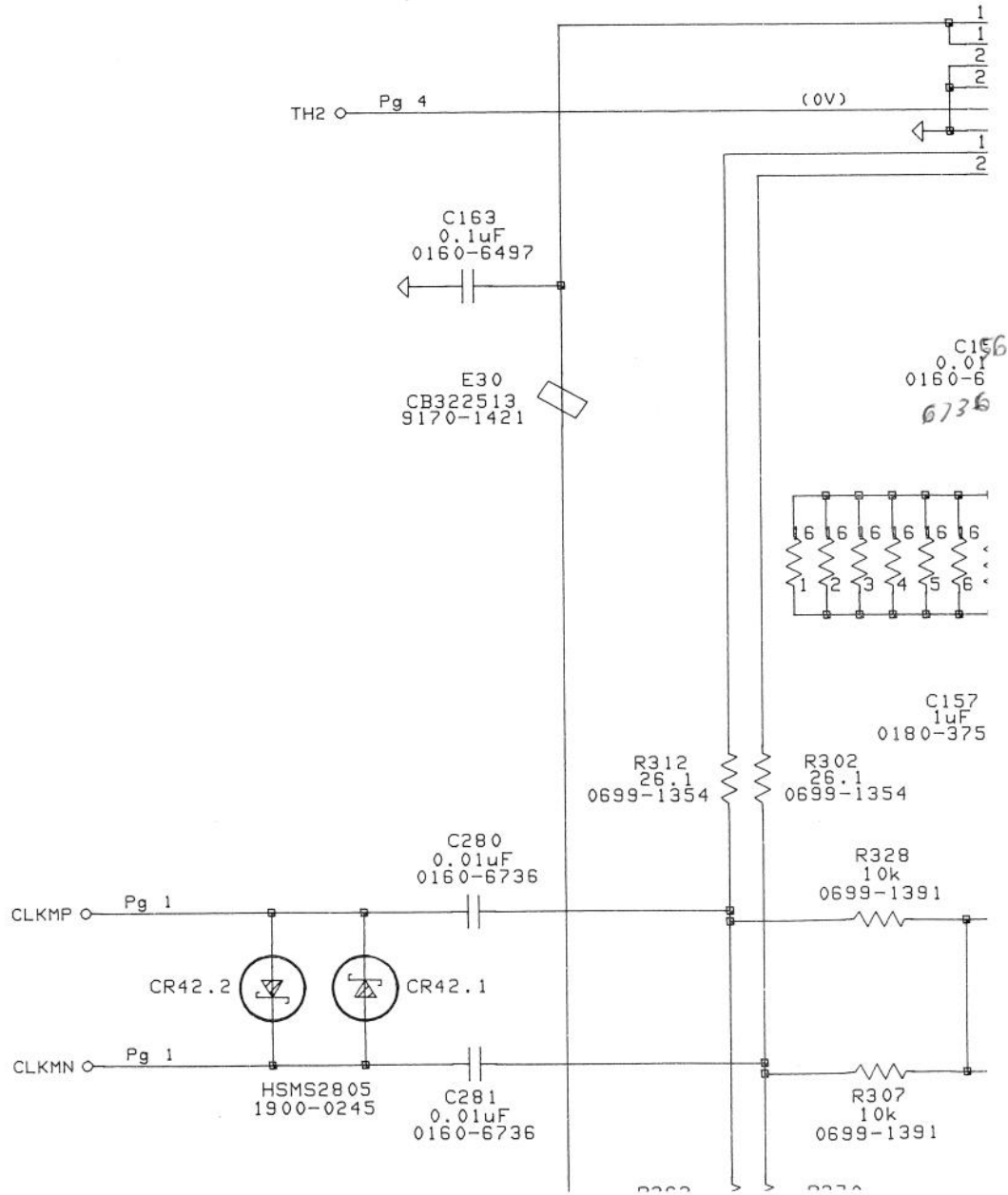


sheet 9 of 11
page 1 upper

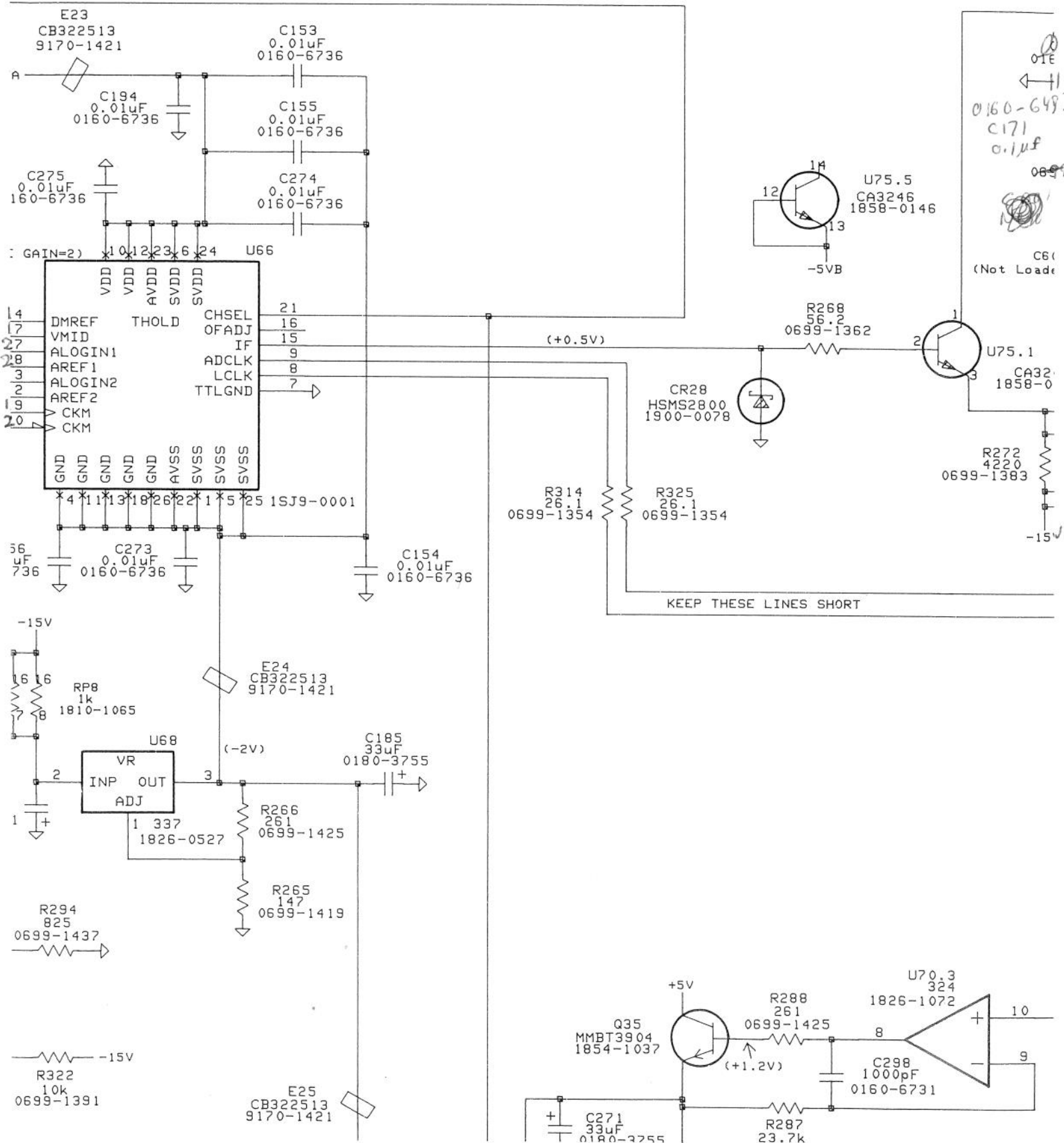


01

(VOLTAGE

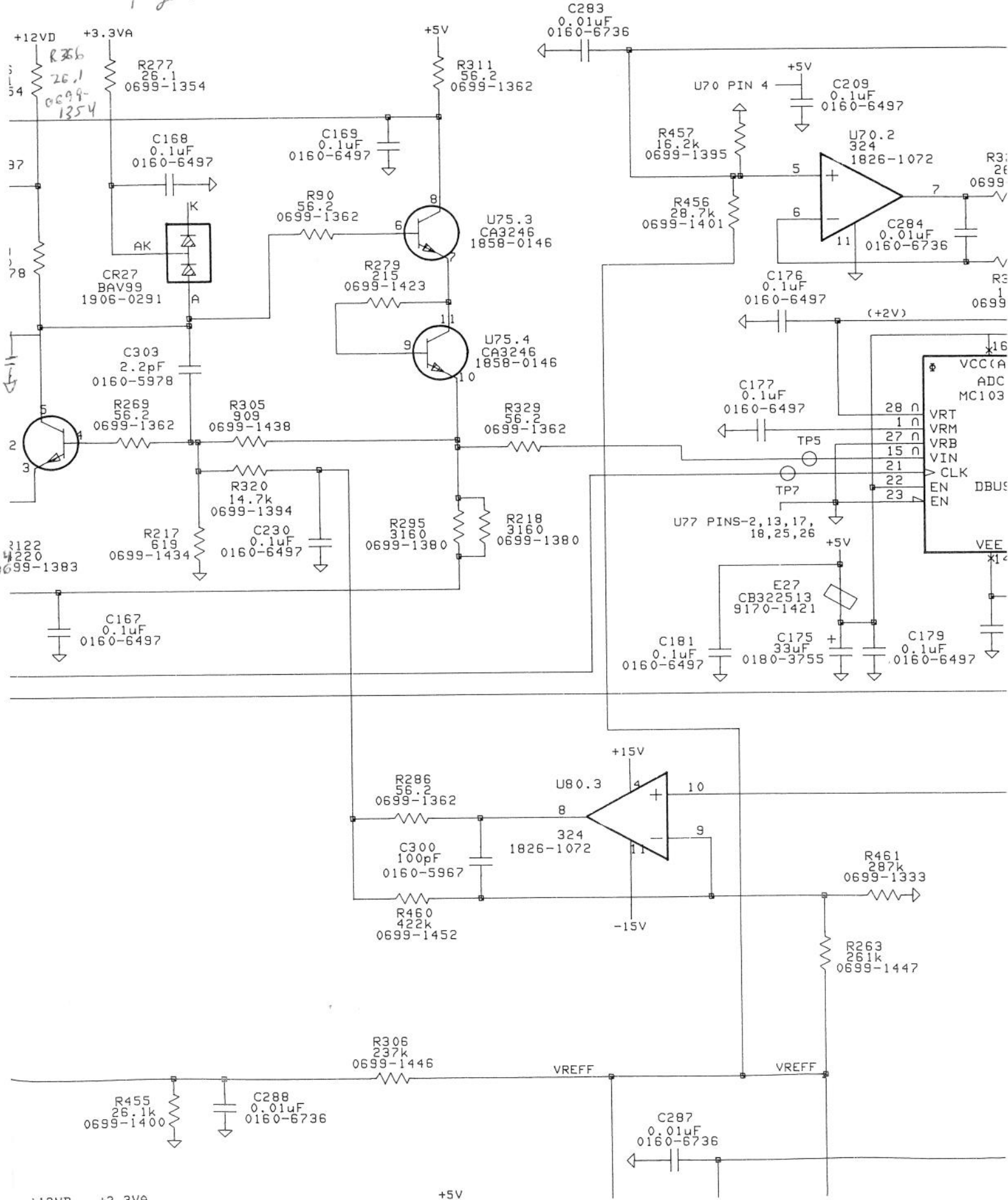


sheet 9 of 11
page 2 upper



sheet 9 of 11
page 3 upper

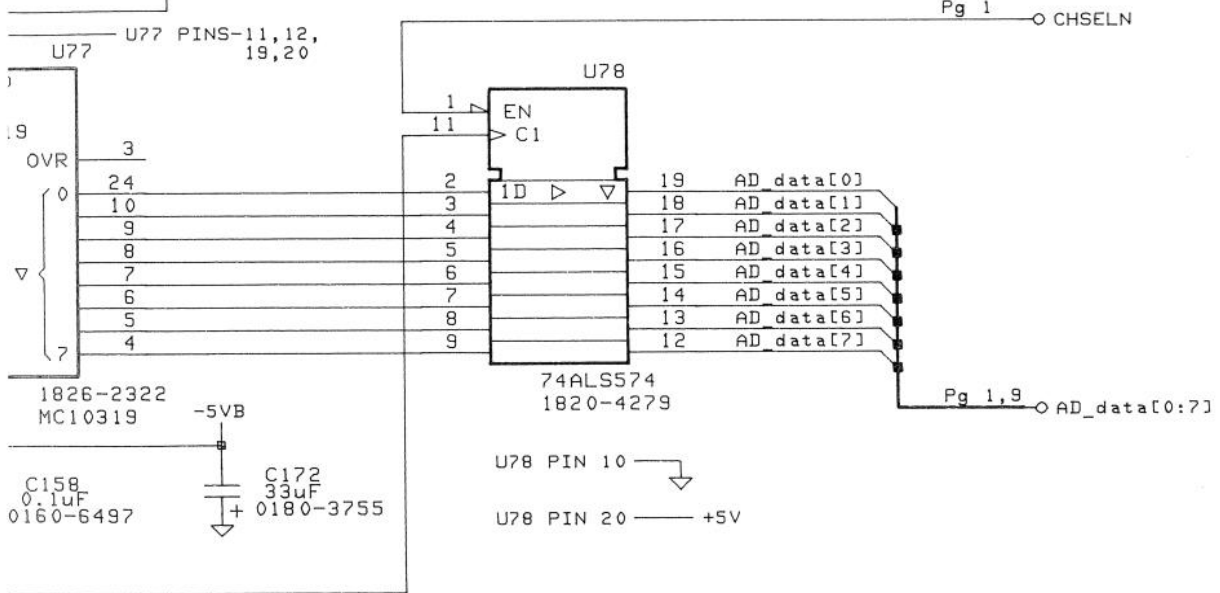
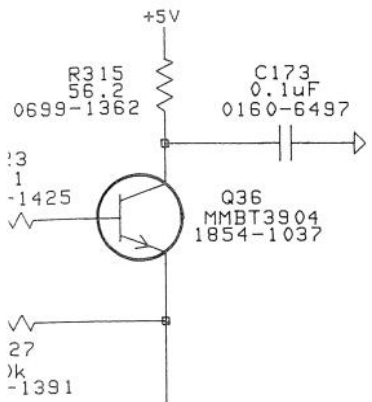
0	1	2	3	4		0
16	17		19		21	2
45	48	81	83	D2		



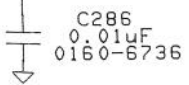
3	9		11	12	14	15	D-54600-66501-3			
2	29	30	32	33	38	43	SYM	REVISIONS	APPROVED	DATE
							A	AS ISSUED	JS	

sheet 9 of 11
page 4 upper

(+2V) Pg 7 STGN2

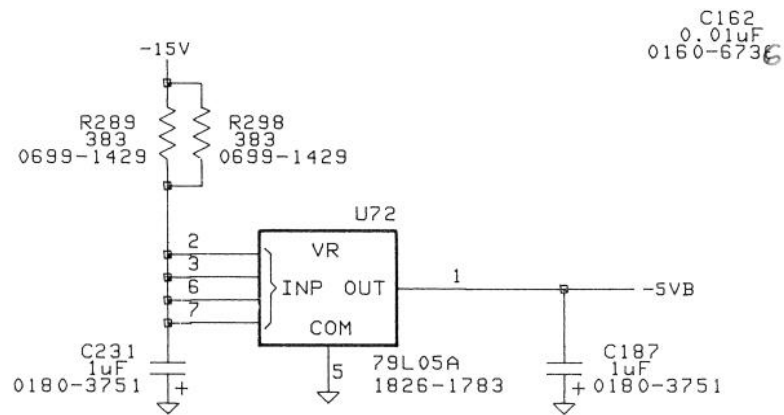
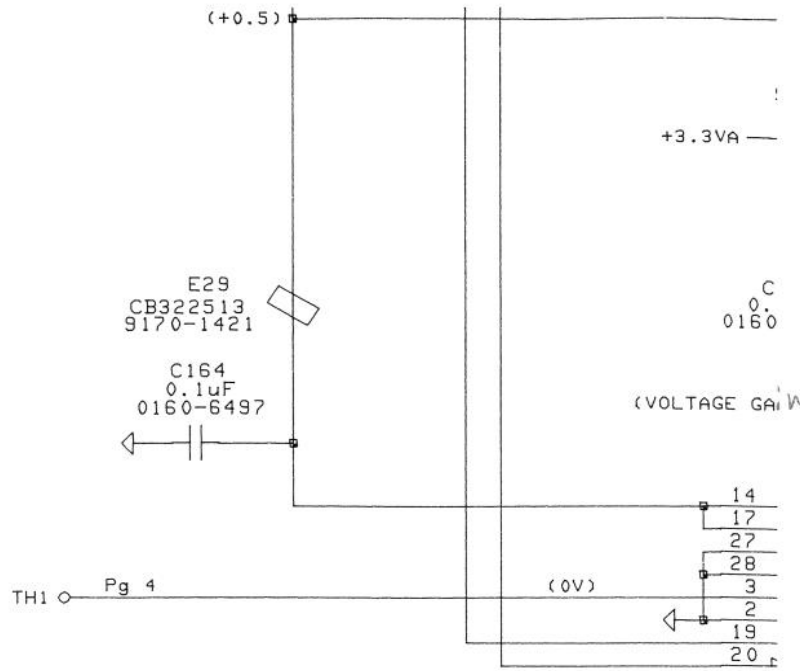


Pg 7 STOS2



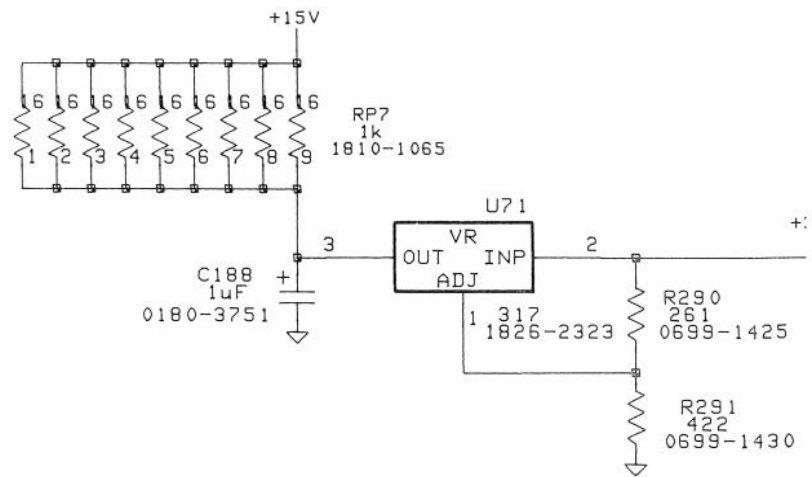
(+2V) Pg 7 STGN1

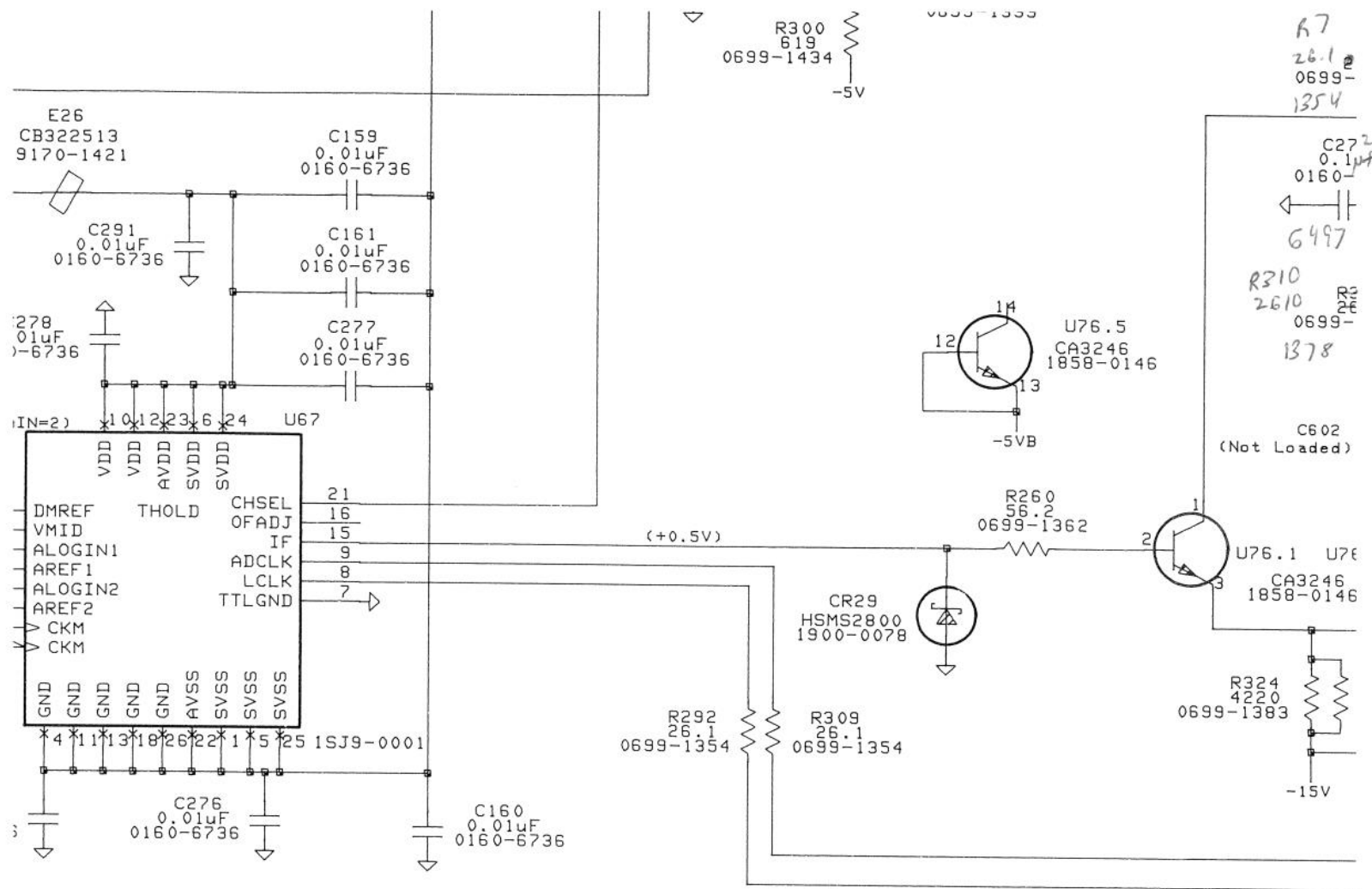
+5V



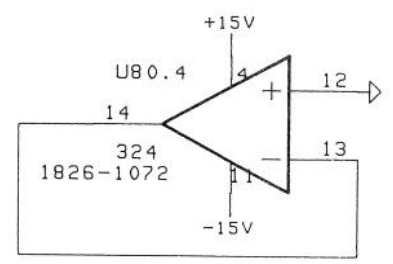
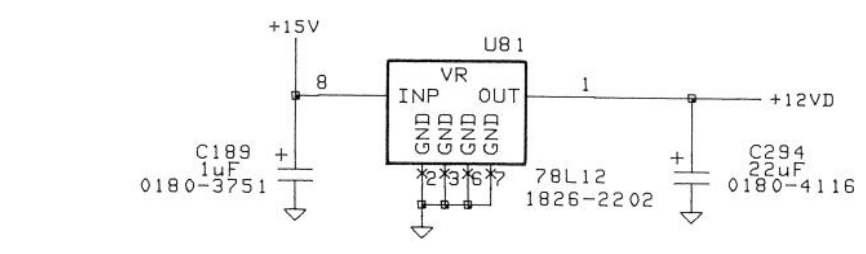
C162
0.01uF
0160-6736

sheet 9 of 11
page 1 lower

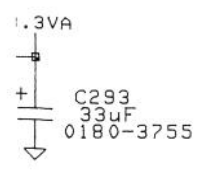
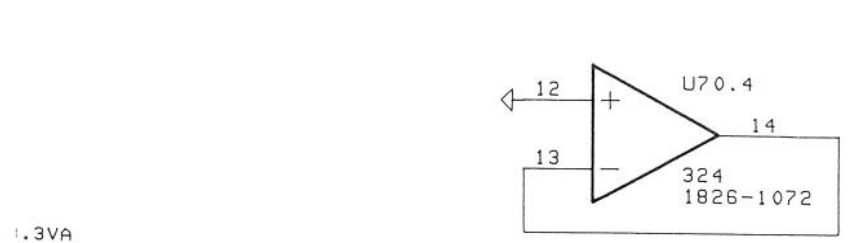




R7
 26.1
 0699-
 1354
 C272
 0.1uF
 0160-
 6497
 R210
 2610
 0699-
 1378

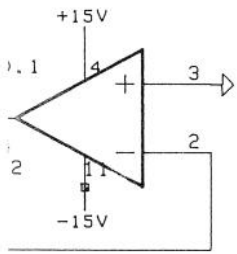
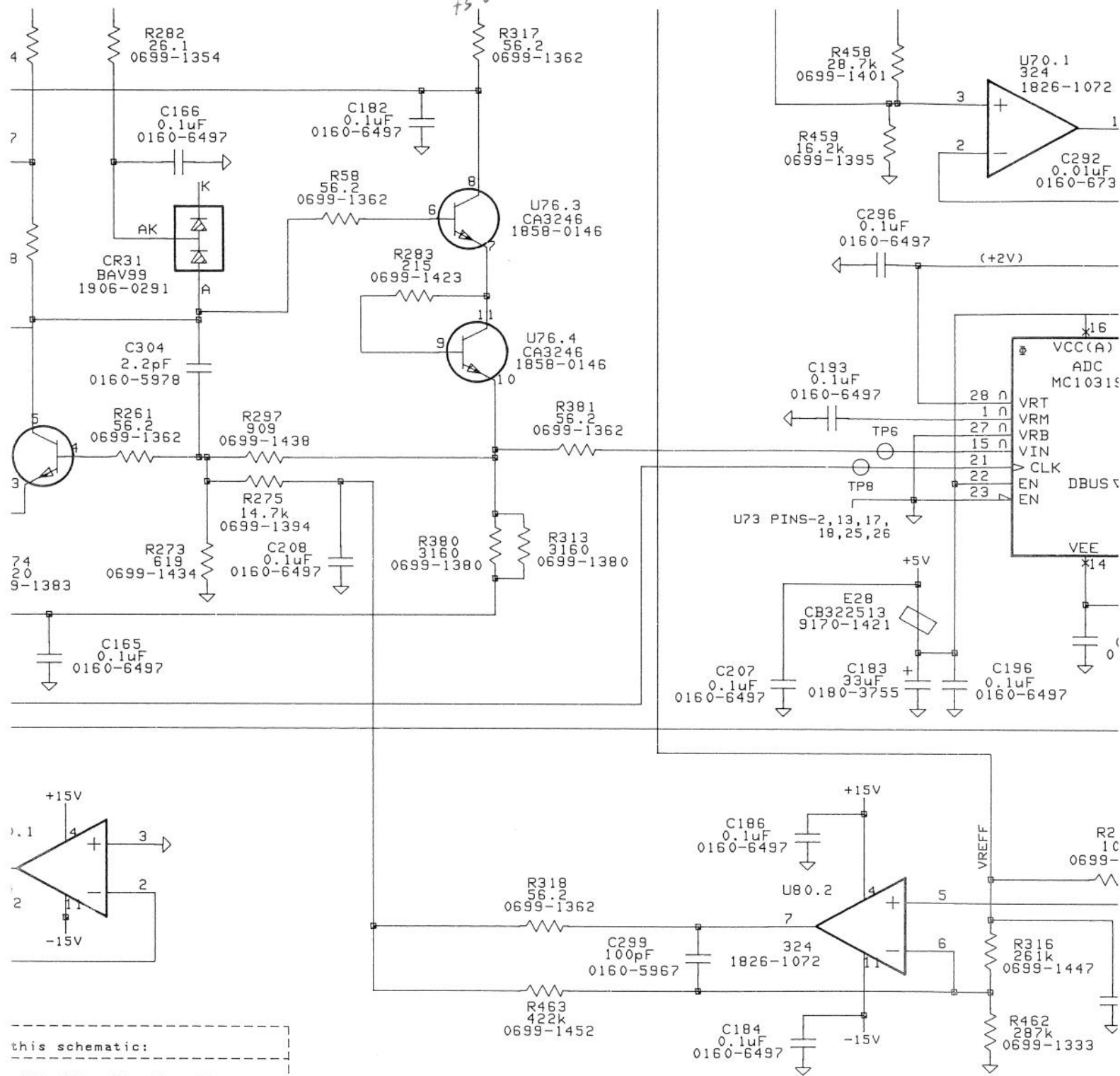


1826-



sheet 9 of 11
 page 2 lower

Parts
C153-11
181-11
230,
284,
601,
CR27-21
E23-30
Q34-36
R7, 58,
265,
280,
309-31
381,
RP7, 8
U66-68,



this schematic:

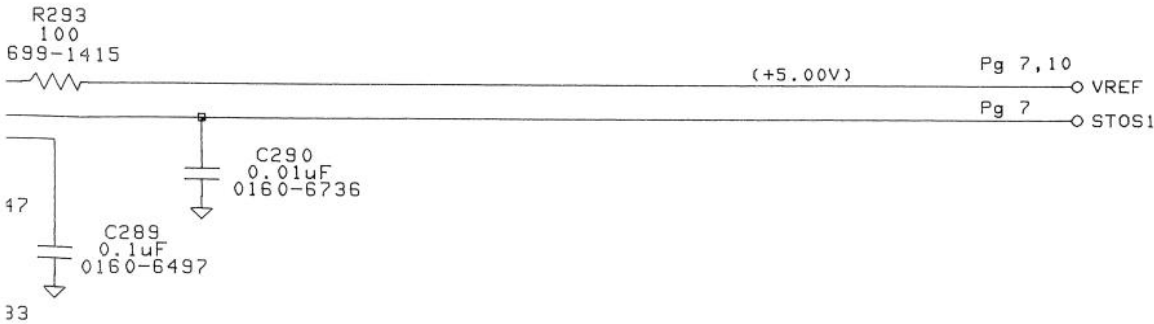
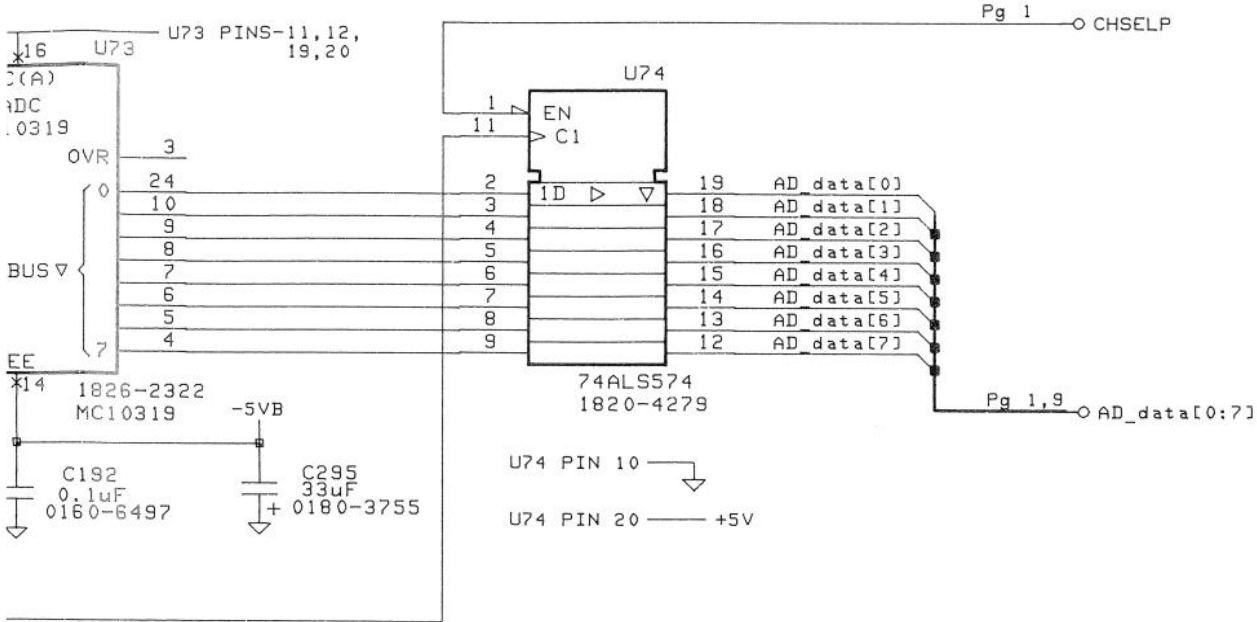
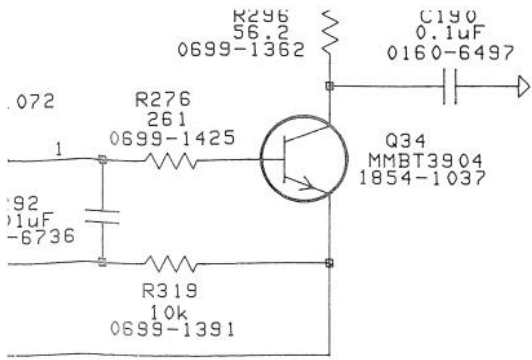
171-173, 175-177, 179,
 192-194, 196, 207-209,
 271-278, 280, 281, 283,
 296, 298-300, 303, 304,

31, 42

0, 122, 217, 218, 260-263,
 268-270, 272-277, 279,
 283, 285-300, 302, 305-307,
 322-325, 327-329, 336, 380,
 463

0-78, 80, 81

sheet 9 of 11
 page 3 lower



*sheet 9 of 11
 page 4 lower*

DRAWN BY JIM STRINGER	DATE 6/27/91	SAMPLER-A/D	HEWLETT PACKARD
ENGINEER	RELEASE TO PROD.		
SUPERSEDES DWG.	SCALE	SHEET 9 OF 11	D-54600-66501-