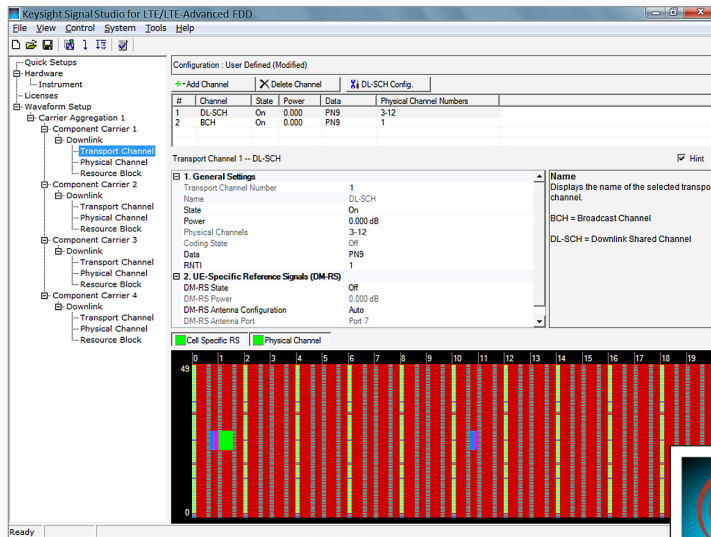


# Keysight Technologies

## Signal Studio for LTE/LTE-Advanced FDD/TDD N7624B/N7625B

### Technical Overview



- Create Keysight validated and performance optimized reference signals compliant to 3GPP LTE and LTE-Advanced specifications
- Use predefined setups for E-UTRA test models (E-TM) and fixed reference channels (FRC)
- Perform closed loop HARQ and timing adjustment testing with real-time signal generation
- Envelope generation with digital pre-distortion (DPD) for envelope tracking power amplifier (ETPA) testing
- Perform multi-carrier, multi-format tests with multi-standard radio (MSR) signal generation
- Accelerate the signal creation process with a user interface based on parameterized and graphical signal configuration and tree-style navigation

## Simplify LTE and LTE-Advanced Signal Creation

Keysight Signal Studio software is a flexible suite of signal-creation tools that will reduce the time you spend on signal simulation. For LTE and LTE-Advanced, Signal Studio's performance-optimized reference signals—validated by Keysight—enhance the characterization and verification of your devices. Through its application-specific user-interface you'll create standards-based and custom test signals for component, transmitter, and receiver test.

### Component and transmitter test

Signal Studio's basic capabilities use waveform playback mode to create and customize waveform files needed to test components and transmitters. Its user-friendly interface lets you configure signal parameters, calculate the resulting waveforms and download files for playback. The applications for these partially-coded, statistically correct signals include

- Parametric test of components, such as amplifiers and filters
- Performance characterization and verification of RF sub-systems

### Receiver test

Signal Studio's advanced capabilities enable you to create fully channel-coded signals for receiver bit-error-rate (BER), block-error-rate (BLER), packet-error-rate (PER), or frame error rate (FER) analysis. Applications include

- Performance verification and functional test of receivers, during RF/baseband integration and system verification
- Coding verification of baseband subsystems, including FPGAs, ASICs, and DSPs

In addition to waveform playback mode, some advanced capabilities operate in real-time mode, which is used to define the parameters of nonrepeating and dynamically changing signals needed for receiver testing. Its graphical interface provides a direct instrument connection for parameter transfer and closed-loop or interactive control during signal generation.

### Apply your signals in real-world testing

Once you have setup your signals in Signal Studio, you can download them to a variety of Keysight instruments. Signal Studio software complements these platforms by providing a cost-effective way to tailor them to your test needs in design, development and production test.

- Vector signal generators
  - MXG X-Series
  - EXG X-Series
  - ESG
  - First-generation MXG
  - PXIe M9381A
- EXT wireless communication test set
- PXB baseband generator and channel emulator
- M9252A DigRF host adaptor
- SystemVue simulation software

### Typical Measurements

Test components with basic capabilities

- ACLR
- CCDF
- EVM
- Modulation accuracy
- Channel power
- Occupied bandwidth

Verify receivers with advanced capabilities

- Sensitivity
- Selectivity
- Blocking
- Intermodulation

## Component and Transmitter Test



Figure 1. Typical component test configuration using Signal Studio's basic capabilities with a Keysight X-Series signal generator and an X-Series signal analyzer

Signal Studio's basic capabilities enable you to create and customize LTE and LTE-Advanced waveforms to characterize the power and modulation performance of your components and transmitters. Easy manipulation of a variety of signal parameters, including transmission bandwidth, cyclic prefix, and modulation type, simplifies signal creation.

- Create spectrally-correct signals for ACLR, channel power, spectral mask, and spurious testing
- Set parameters such as channel power and data channel modulation type (BPSK, QPSK, 16QAM, 64QAM) for modulation verification and analysis, such as EVM tests
- Use pre-defined E-UTRA test models (E-TM) for downlink, reference measurement channels (RMC) for uplink
- Configure multi-carrier waveforms to simulate multi-user, multi-cell signals
- View CCDF, spectrum, time domain, and power envelope graphs to investigate the effects of power ramps, modulation formats, power changes, clipping, and other effects on device performance
- Generate slot length-based waveforms to help make a fast PA tests with a waveform sequence

### Multi-Standard Radio (MSR) Testing

Today's modern base stations support multiple radio access technologies. The 3GPP TS37.141 Rel-9 specification defines how to test these multi-standard base station transmitters and receivers.

To address the challenges of testing multi-standard components and receivers, Signal Studio for LTE and LTE-Advanced FDD/TDD enables you to import W-CDMA/HSPA, GSM/ EDGE, cdma2000/1xEV-DO, TD-SCDMA, and LTE TDD/FDD waveforms from other Signal Studio products.

The new waveform library manager, which requires Option JFP, can help you manage imported waveforms. Multiple sample rate waveforms can be stored to help shorten the time it takes to combine multi-carrier waveforms with different sample rates.

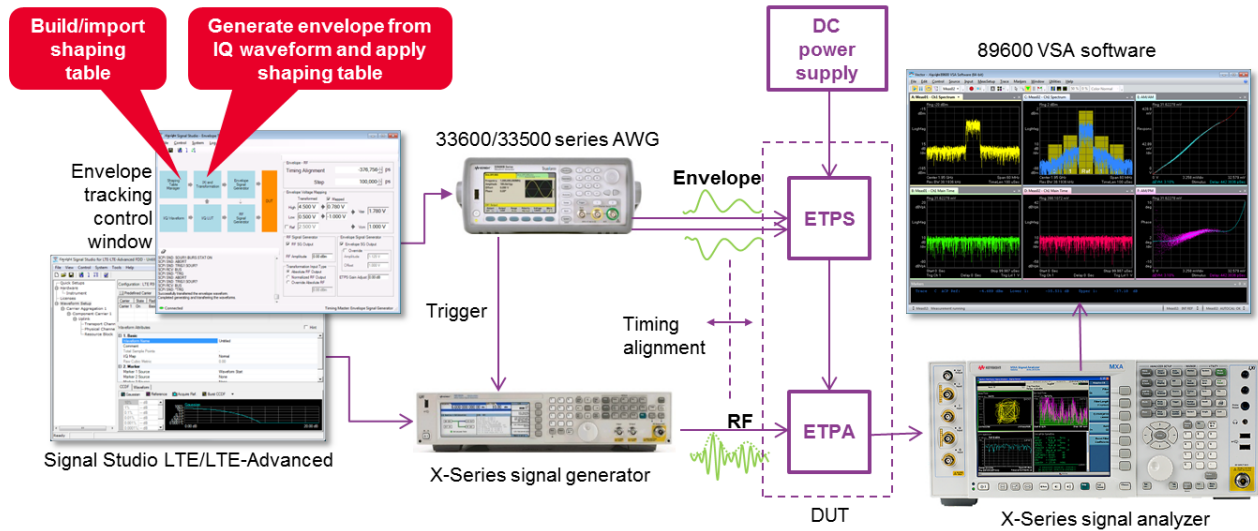


Figure 2. ETPA test configuration with Envelope Tracking Control.

## Envelope tracking and DPD for ETPA test

Envelope tracking power amplifier (ETPA) is an emerging technology geared toward improving battery efficiency of mobile handsets. To test ETPA and ETPS (Envelope Tracking Power Supply), there must be IQ waveforms, along with envelope waveforms that track change of IQ magnitude, in order to modulate the power supplied to ETPA.

Signal Studio's Envelope Tracking option adds "envelope tracking control" capability which allows for the generation of envelope waveforms based on IQ waveforms. The following features are supported in the envelope tracking control to enable more efficient ETPA and ETPS tests:

- Envelope waveform generation from IQ waveforms
- Shaping tables can be built internally or imported via CSV files
- Download envelope waveforms directly to the Keysight 33600/33500 series arbitrary waveform generator<sup>1</sup>
- Real-time control of RF and envelope signal timing alignment
- Apply Look-Up Table (LUT) based digital pre-distortion (DPD) to IQ waveforms

1. 33521/22A/B and 33621/22A with Option OCX and Option MEM recommended. 33522A/B and 33622A is required for differential operation.

## Receiver Test

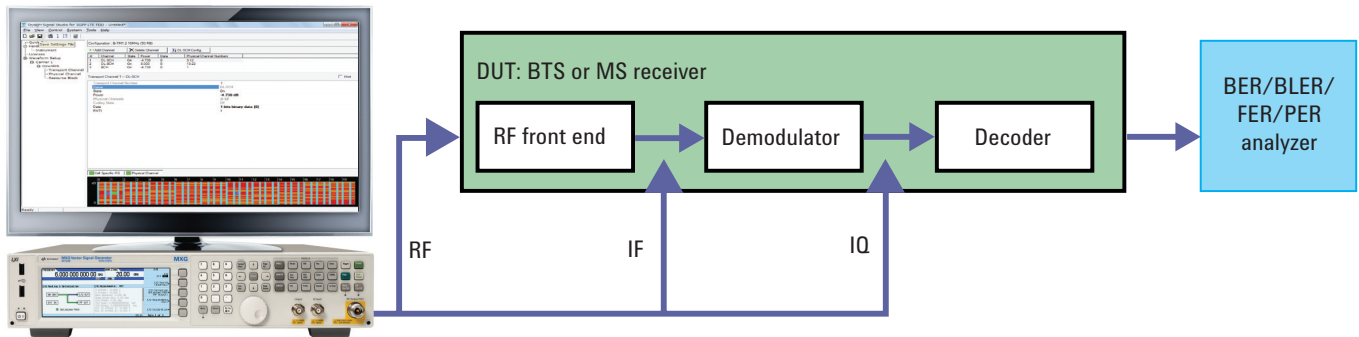


Figure 3. Generate fully channel-coded signals to evaluate the throughput of your receiver with Keysight X-Series signal generators and Signal Studio's advanced capabilities.

Signal Studio's advanced capabilities address applications in LTE receiver test, including the verification of baseband designs and the integration of the baseband and RF modules. Using waveform playback mode with the capability to generate up to 1024 frames enables transport-channel coding to validate eNB and UE receiver characteristics and performance.

The real-time mode enables you to define the parameters of nonrepeating signals and provides a direct instrument connection to dynamically change signal parameters and respond to closed-loop feedback.

### eNB receiver testing

- Choose from a variety of pre-defined fixed reference channel (FRC) configurations
- Create PUSCH sounding reference signals (SRS), including frequency hopping and UL control information (UCI) multiplexing
- Use the PUCCH wizard to create multi-user configurations
- Customize RV index sequence for HARQ retransmission
- Dynamically configure uplink 2x2 MIMO signals based on HARQ and Timing Advanced feedback with real-time signal generation
- UL 4x4 MIMO

### Conformance test made easy with N7649B Test Case Manager

Test Case Manager (TCM) provides a simplified user interface for quick and easy set-up of standard-compliant conformance test configurations for eNB receiver tests. With TCM, simply choose one of the test cases from TS36.141 clause 7 and clause 8 from the tree menu and specify a few parameters such as eNB type, carrier frequency, etc. TCM then automatically generates standard-compliant wanted and interference waveforms and sets up the signal generators according to the standard requirement.

For more information, please visit [www.keysight.com/find/N7649b](http://www.keysight.com/find/N7649b)

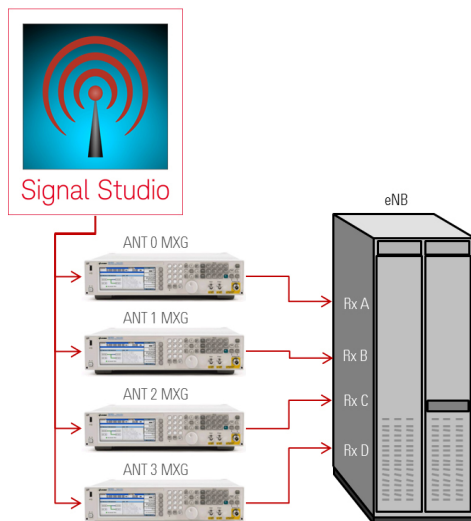


Figure 4. UL 4x4 MIMO for eNB receiver testing

## UE receiver testing

- Choose a pre-defined fixed reference channel (FRC) configuration for early verification of baseband
- Create downlink control information (DCI) coding, automatically, based on PDSCH allocation, UE scheduling and random access, and UL power control
- Define your own system information block (SIB) and automatically configure master information block (MIB)
- Select transmission modes 1 through 9, including transmitter diversity and spatial multiplexing, with up to 8x8 MIMO configuration
- Generate Inter-band carrier aggregation signals with cross-carrier scheduling applied, in conjunction with up to 8x8 MIMO in each inter-band
- Perform HARQ testing with up to 15 simulated retransmission and user-definable RV index sequence
- Test E-MBMS with MCH/PMCH and MBSFN RS

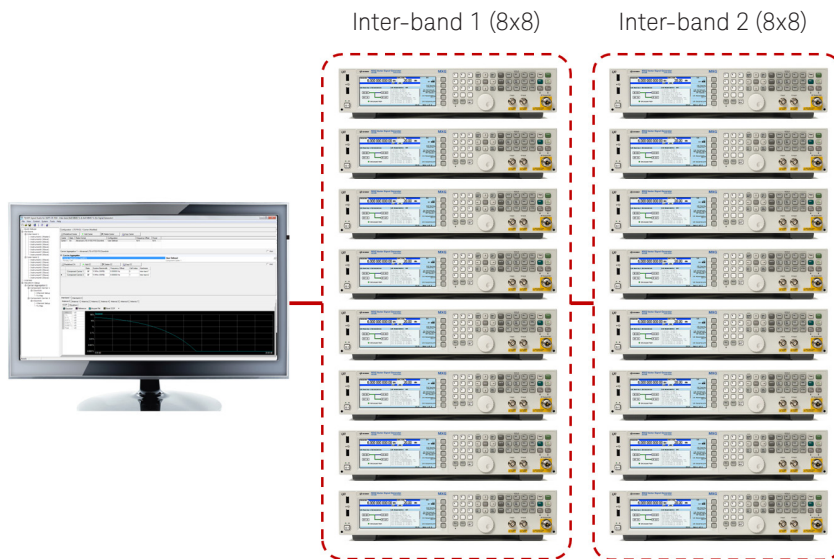


Figure 5. Inter-band carrier aggregation with 8x8 MIMO configuration.

## Features Summary

LTE FDD and TDD	Component & transmitter testing		Receiver testing	
	Basic waveform playback mode	Advanced waveform playback mode	Advanced real-time mode	
<b>Signal Studio</b>				
LTE FDD/TDD	●	●	●	
LTE-Advanced FDD/TDD	●	●		
Calibrated AWGN	●	●	●	
Real-time modulation filter		●		
Code domain and CCDF graphs	●	●		
Multi-carrier timing, and clipping	●	●		
Up to 1024 frame waveform length		●		
Digital pre-distortion	●	●		
Short length waveform	●			
<b>Downlink</b>				
Up to 4x4 (Rel-9) and 8x8 (Rel-10) MIMO configurations		●		
Inter-band carrier aggregation (Rel-10)		●		
Cross-carrier scheduling (Rel-10)		●		
Automatic DCI generation (Rel-10)		●		
E-TM setting wizard	●			
Preconfigured FRC signals		●		
HARQ processing for DL-SCH		●		
PDSCH selectable modulations: QPSK, 16QAM, 64QAM	●	●		
DL-SCH selectable MCS		●		
MCH with MBSFN RS		●		
CSI-RS and DM-RS (Rel-10) <sup>1</sup>	●	●		
Carrier aggregation (Rel-10)	●	●		
Positioning RS (PRS)		●		
<b>Uplink</b>				
Preconfigured FRC signals with transport channel coding		●		●
PRACH signal generation	●			
Carrier aggregation (Rel-10)	●	●		
Clustered SC-FDMA (Rel-10)	●	●		
Simultaneous PUSCH/PUCCH (Rel-10)	●	●		
PUCCH format 3 and PUCCH format 1b with channel selection (Rel-10)	●	●		
User-definable HARQ and RV index transmission pattern		●		●
UCI multiplexing		●		
Sounding RS		●		● <sup>2</sup>
Closed loop HARQ and timing adjustment feedback				●
4x4 MIMO (Rel-10)		●		
2x2 MIMO with closed loop HARQ				●

1. Only basic waveform playback mode is supported for TDD

2. Only FDD supports realtime mode for Sounding RS

## Supported Standards and Test Configurations

3GPP technical specifications	Rel-9		Rel-10	
	Version	Date	Version	Date
36.141	9.11.0	2012-09	10.12.0	2013-09
36.211	9.1.0	2010-03	10.7.0	2013-02
36.212	9.4.0	2011-09	10.8.0	2013-06
36.213	9.3.0	2010-09	10.10.0	2013-06
36.321	9.6.0	2012-03	10.9.0	2013-06
36.331	9.11.0	2012-06	10.10.0	2013-06
36.521-1	9.8.0	2012-03	10.6.0	2013-06

### eNB conformance tests (3GPP TS 36.141)

Transmitter characteristics (Section 6)		Keysight solution	
Test models type	Test model use case	Signal Studio mode <sup>1</sup>	Recommended hardware
E-UTRA test model 1.1	BS Output power Unwanted emissions Occupied bandwidth ACLR Operating band unwanted emissions Transmitter spurious emissions Transmitter intermodulation RS absolute accuracy	Waveform playback	MXG/EXG/M9381A
E-UTRA test model 1.2	ACLR Operating band unwanted emissions		
E-UTRA test model 2	Total power dynamic range EVM of single 64QAM PRB allocation Frequency error		
E-UTRA test model 3.1	Output power dynamics Total power dynamic range Transmitted signal quality Frequency error EVM for 64QAM		
E-UTRA test model 3.2	Transmitted signal quality Frequency error EVM for 16QAM		
E-UTRA test model 3.3	Transmitted signal quality Frequency error EVM for QPSK		

1. Predefined setups for all E-UTRA test models available



Receiver characteristics (Section 7)	Keysight solution		
	Wanted signal <sup>1</sup> Signal Studio mode	Interfering signal Signal Studio mode	Hardware <sup>2</sup>
7.2 Reference sensitivity level	Waveform playback	N/A	MXG/EXG/M9381A
7.3 Dynamic range		AWGN	
7.4 In-channel selectivity		Waveform playback	2 MXG/EXG/M9381A
7.5 Adjacent channel selectivity			
7.5 Narrowband blocking			
7.6 Blocking (in-band)		CW	MXG/EXG for wanted, mW MXG/PSG for CW interferer
7.6 Blocking (out-of-band)			
7.6 Blocking (co-location with other base stations)	N/A		2 MXG/EXG/M9381A
7.7 Receiver spurious emissions	N/A		X-Series signal analyzers
7.8 Receiver intermodulation	Waveform playback	CW and waveform playback	3 MXG/EXG/M9381A

1. Predefined setups for all fixed reference channels (FRC) are available
2. In some tests, wanted and interfering signals can be generated from the same instrument, depending on the dynamic range requirement  
For best performance, it is recommended to generate the interfering signal with a separate signal generator and combine at RF

Performance requirements (Section 8)	Keysight solution		
	Signal Studio mode		Hardware <sup>3,4</sup>
	Wanted signal <sup>1,2</sup>	Interfering signal	
8.2.1 PUSCH in multipath fading propagation condition transmission on single antenna port	Real-time (with HARQ feedback)	N/A	MXG/EXG or PXB
8.2.1A PUSCH in multipath fading propagation conditions transmission on two antenna ports	Real-time MIMO (with HARQ feedback)	N/A	MXG/EXG or PXB
8.2.2 UL timing adjustment	Real-time (with HARQ and TA feedback)	Waveform playback or real-time	2 MXG/EXG or PXB
8.2.3 HARQ-ACK multiplexed on PUSCH	Waveform playback	N/A	MXG/EXG or PXB
8.2.4 High speed train conditions	Real-time (with HARQ feedback)		
8.3.1 ACK missed detection for single user PUCCH format 1a on single antenna port	Waveform playback	N/A	MXG/EXG or PXB
8.3.2 CQI missed detection for PUCCH format 2 on single antenna port			
8.3.3 ACK missed detection for multi user PUCCH format 1a		Waveform playback	4 MXG/EXG or PXB
8.3.4 ACK missed detection for PUCCH format 1b with Channel Selection <sup>5</sup>		N/A	2 MXG/EXG or PXB
8.3.5 ACK missed detection for PUCCH format 3 <sup>5</sup>			
8.3.6 NAK to ACK detection for PUCCH format 3 <sup>5</sup>			
8.3.7 ACK missed detection for PUCCH format 1a transmission on two antenna ports <sup>5</sup>		N/A	2 MXG/EXG or PXB
8.3.8 CQI performance requirements for PUCCH format 2 transmission on two antenna ports <sup>5</sup>			
8.4.1 PRACH false alarm probability and missed detection	N/A		MXG/EXG or PXB

1. Basic and advanced waveform playback options (N7624B-HFP, SFP/N7625B-EFP,QFP) are required for waveform playback
2. Real-time option (N7624B-WFP for FDD and N7625B-WFP for TDD) is required for real-time signal generation for MXG/EXG and PXB
3. MXG/EXG requires external fader for channel simulation
4. PXB requires same number of upconverter signal generators as eNB receiver antennas for RF output
5. Advanced LTE-Advanced option (N7624B-TFP for FDD and N7625B-TFP for TDD) is required for waveform playback

## Performance Characteristics

### Definitions

#### Characteristic performance:

Non-warranted value based on testing during development phase of this product.

#### Measured (meas):

An attribute measured during the design phase for purposes of communicating expected performance, such as amplitude drift vs. time. This data is not warranted and is measured at room temperature (approximately 25 °C).

The following performance characteristics apply to the N5172B EXG and the N5182B MXG X-Series vector signal generators with enhanced dynamic range, Option UNV, except as noted. For performance characteristics of other instruments, refer to the respective product data sheet.

#### Parameters:

Radio format: 1-carrier basic LTE FDD downlink and 1-carrier basic LTE TDD downlink

Frequencies measured: 1880, 1900, 1910, 1920, 1960, 2017.5, 2350, and 2595 MHz

Power: -10 dBm (FDD) and +3 dBm (TDD)

### Distortion performance (Playback mode)

Carrier bandwidth (MHz)	E-UTRA test model/modulation	E-UTRA adjacent channel						UTRA adjacent channel					
		Offset E-UTRA (MHz)	Measured ACLR (dBc)				Integration bandwidth (MHz)	Offset E-UTRA (MHz)	Measured ACLR (dBc)				Integration bandwidth (MHz)
			N7624B		N7625B				N7624B		N7625B		
			M9381A	N5172B/N5182B	M9381A	N5172B/N5182B			M9381A	N5172B/N5182B	M9381A	N5172B/N5182B	
5	E-TM1.1/QPSK	Adjacent (5)	-69.8	-71.1	-69.1	-70.4	4.5	Adjacent (5)	-71.1	-73	-70.1	-70.9	3.84 (RRC filtered)
		Alternate (10)	-73.6	-72.2	-72.3	-71.6		Alternate (10)	-74.3	-75.4	-72.9	-71.8	
	E-TM1.2/QPSK	Adjacent (5)	-69.5	-71.1	-68.6	-70.0		Adjacent (5)	-70.8	-72.6	-69.6	-71.0	
		Alternate (10)	-73.2	-72.9	-70.9	-71.6		Alternate (10)	-73.9	-75.3	-71.6	-72.2	
10	E-TM1.1/QPSK	Adjacent (10)	-69.1	-69.1	-66.8	-68.6	9	Adjacent (7.5)	-71.7	-73.1	-69.3	-72.0	
		Alternate (20)	-69.6	-69.2	-68.5	-69.3		Alternate (12.5)	-73.6	-75.2	-72.2	-72.6	
	E-TM1.2/QPSK	Adjacent (10)	-69.2	-69	-66.7	-68.5		Adjacent (7.5)	-71.6	-73.2	-69.0	-71.8	
		Alternate (20)	-69.8	-69.3	-68.5	-69.5		Alternate (12.5)	-73.9	-75.2	-72.1	-72.7	
20	E-TM1.1/QPSK	Adjacent (20)	-66.8	-66.8	-64.7	-67.0	18	Adjacent (12.5)	-72.4	-73.6	-69.4	-72.3	
		Alternate (40)	-66.7	-66.7	-65.8	-66.5		Alternate (17.5)	-73.1	-74.4	-71.0	-72.9	
	E-TM1.2/QPSK	Adjacent (20)	-66.9	-66.7	-64.6	-66.1		Adjacent (12.5)	-72.2	-73.5	-69.3	-71.8	
		Alternate (40)	-66.8	-66.4	-65.8	-66.1		Alternate (17.5)	-73.2	-74.6	-71.0	-72.2	

### EVM performance (Playback mode)

Carrier bandwidth (MHz)	E-UTRA test model	Allocated RB	PDSCH modulation	Measured EVM (%)			
				N7624B		N7625B	
				M9381A	N5172B/ N5182B	M9381A	N5172B/ N5182B
5	E-TM2	1	64QAM	0.21	0.41	0.2	0.6
	E-TM3.1	25	64QAM	0.34		0.51	
	E-TM3.2		16QAM	0.47		0.57	
			QPSK	0.26		0.39	
	E-TM3.3		16QAM	0.26		0.37	
			QPSK	0.61		0.82	
10	E-TM2		1	64QAM	0.18	0.33	0.19
	E-TM3.1	50	64QAM	0.29	0.37		
	E-TM3.2		16QAM	0.39	0.48		
			QPSK	0.23	0.28		
	E-TM3.3		16QAM	0.24	0.29		
			QPSK	0.53	0.7		
20	E-TM2		1	64QAM	0.14	0.33	0.14
	E-TM3.1	100	64QAM	0.28	0.33		
	E-TM3.2		16QAM	0.38	0.41		
			QPSK	0.22	0.23		
	E-TM3.3		16QAM	0.22	0.23		
			QPSK	0.53	0.57		

1. Symbol timing adjust: max of EVM window start/end

### Distortion performance (Real-time mode)

Fixed reference channel	Modulation	Adjacent channel offset (MHz)	Measured ALCR (dBc) (With Option 660)		Integration bandwidth (MHz)
			N7624B	N7625B	
A3-1	QPSK	1.4	-65.9	-68.2	1.1
A3-4		5	-70.6	-69.7	4.5
A3-5		10	-69	-68.3	9
A3-7		20	-66.6	-65.6	18
A4-1	16QAM	1.4	-66.1		1.1
A4-5		5	-70	-68.6	4.5
A4-6		10	-68.7	-68.4	9
A4-7		20		-65.9	18
A4-8		20	-66.3		18
A5-1	64QAM	1.4	-66.7		1.1
A5-4		5	-69.9	-67.6	4.5
A5-5		10	-68.3	-67.6	9
A5-7		20	-66.2	-65.2	18

### EVM performance (Real-time mode)

Fixed reference channel	Modulation	Allocated RB	Measured EVM (%) (With Option 660)	
			N7624B	N7625B
A3-1	QPSK	1	0.46	0.46
A3-4		25		
A3-5		50		
A3-7		100		
A4-1	16QAM	1	0.45	0.46
A4-5		25		
A4-6		50		
A4-8		100		
A5-1	64QAM	1	0.49	
A5-4		25		
A5-5		50		
A5-7		100		

## Ordering Information

### Software licensing and configuration

Signal Studio offers flexible licensing options, including:

- **Fixed license:** Allows you to create unlimited I/Q waveforms with a specific Signal Studio product and use them with a single, specific platform.
- **Transportable/floating license:** Allows you to create unlimited I/Q waveforms with a specific Signal Studio product and use them with a single platform (or PC in some cases) at a time. You may transfer the license from one product to another.
- **Waveform license:** Allows you to generate up to 545 user-configured I/Q waveforms with any Signal Studio product and use them with a single, specific platform.

The table below lists fixed, perpetual licenses only; additional license types may be available. For detailed licensing information and configuration assistance, please refer to the Licensing Options web page at [www.keysight.com/find/SignalStudio\\_licensing](http://www.keysight.com/find/SignalStudio_licensing)

## N7624/25B Signal Studio for LTE/LTE-Advanced FDD/TDD

Model-Option	Description
<b>Connectivity</b>	
N7624/25B-1FP	Connect to E4438C ESG signal generator
N7624/25B-3FP	Connect to N5182/72 MXG/EXG signal generator
N7624/25B-6FP	Connect to N5106A PXB baseband generator and channel emulator
N7624/25B-7FP	Connect to Keysight simulation software
N7624/25B-8FP	Connect to E6607 EXT wireless communications test set
N7624/25B-9FP	Connect to M9381A and M9252A
<b>FDD Capability</b>	
N7624B-HFP	Basic LTE FDD Release 9
N7624B-JFP	Basic LTE-Advanced FDD Release 10
N7624B-SFP	Advanced LTE FDD Release 9
N7624B-TFP	Advanced LTE-Advanced FDD Release 10
N7624B-WFP	Advanced LTE/LTE-Advanced FDD real-time R9/R10 UL
N7624B-KFP	Envelope Tracking
<b>TDD Capability</b>	
N7625B-EFP	Basic LTE TDD Release 9
N7625B-JFP	Basic LTE-Advanced TDD Release 10
N7625B-QFP	Advanced LTE TDD Release 9
N7625B-TFP	Advanced LTE-Advanced TDD Release 10
N7625B-WFP	Advanced LTE/LTE-Advanced TDD real-time R9/R10 UL
N7625B-KFP	Envelope Tracking

### Try Before You Buy!

Free 30-day trials of Signal Studio software provide unrestricted use of the features and functions, including signal generation, with your compatible platform. Redeem a trial license online at

[www.keysight.com/find/SignalStudio\\_trial](http://www.keysight.com/find/SignalStudio_trial)

### Hardware configurations

To learn more about compatible hardware and required configurations, please visit: [www.keysight.com/find/SignalStudio\\_platforms](http://www.keysight.com/find/SignalStudio_platforms)

### PC requirements

A PC is required to run Signal Studio. [www.keysight.com/find/SignalStudio\\_pc](http://www.keysight.com/find/SignalStudio_pc)

### Signal Studio Software Updates

To update previously purchased N7624B or N7625B software to include the latest feature updates, you can purchase the N7624B-MEU or N7625B-MEU minor enhancement update fixed perpetual license.

For more information, visit

[www.keysight.com/find/N7624B-MEU](http://www.keysight.com/find/N7624B-MEU) or  
[www.keysight.com/find/N7625B-MEU](http://www.keysight.com/find/N7625B-MEU)

## Additional Information

### Websites

[www.keysight.com/find/SignalStudio](http://www.keysight.com/find/SignalStudio)

Access the comprehensive online documentation, which includes the complete software HELP

Signal Studio for 3GPP LTE/LTE-Advanced FDD  
[www.keysight.com/find/n7624b](http://www.keysight.com/find/n7624b)

Signal Studio for 3GPP LTE/LTE-Advanced TDD  
[www.keysight.com/find/N7625b](http://www.keysight.com/find/N7625b)

Keysight's LTE design and test solutions  
[www.keysight.com/find/lte](http://www.keysight.com/find/lte)

Keysight's MSR solutions  
[www.keysight.com/find/msr](http://www.keysight.com/find/msr)

### Literature

*Move Forward to What's Possible in LTE*, Brochure, 5989-7817EN

*Keysight 3GPP Long Term Evolution*, Application Note, 5989-8139EN  
*Signal Studio Software*, Brochure, 5989-6448EN

*Transition from 2G/3G to 3.9G/4G Base Station Receiver Conformance Test*, Application Note, 5991-0280EN

*Envelope Tracking and Digital Pre-Distortion Power Amplifier Testing for LTE User Terminal Components*, Application Note, 5991-4069EN

**myKeysight**

**myKeysight**

[www.keysight.com/find/mykeysight](http://www.keysight.com/find/mykeysight)

A personalized view into the information most relevant to you.

**Three-Year Warranty**

[www.keysight.com/find/ThreeYearWarranty](http://www.keysight.com/find/ThreeYearWarranty)

Keysight's commitment to superior product quality and lower total cost of ownership. The only test and measurement company with three-year warranty standard on all instruments, worldwide.



**Keysight Assurance Plans**

[www.keysight.com/find/AssurancePlans](http://www.keysight.com/find/AssurancePlans)

Up to five years of protection and no budgetary surprises to ensure your instruments are operating to specification so you can rely on accurate measurements.



[www.keysight.com/quality](http://www.keysight.com/quality)

Keysight Electronic Measurement Group  
 DEKRA Certified ISO 9001:2008  
 Quality Management System



**Keysight Channel Partners**

[www.keysight.com/find/channelpartners](http://www.keysight.com/find/channelpartners)

Get the best of both worlds: Keysight's measurement expertise and product breadth, combined with channel partner convenience.

[www.keysight.com/find/SignalStudio](http://www.keysight.com/find/SignalStudio)

For more information on Keysight Technologies' products, applications or services, please contact your local Keysight office. The complete list is available at: [www.keysight.com/find/contactus](http://www.keysight.com/find/contactus)

**Americas**

Canada	(877) 894 4414
Brazil	55 11 3351 7010
Mexico	001 800 254 2440
United States	(800) 829 4444

**Asia Pacific**

Australia	1 800 629 485
China	800 810 0189
Hong Kong	800 938 693
India	1 800 112 929
Japan	0120 (421) 345
Korea	080 769 0800
Malaysia	1 800 888 848
Singapore	1 800 375 8100
Taiwan	0800 047 866
Other AP Countries	(65) 6375 8100

**Europe & Middle East**

Austria	0800 001122
Belgium	0800 58580
Finland	0800 523252
France	0805 980333
Germany	0800 6270999
Ireland	1800 832700
Israel	1 809 343051
Italy	800 599100
Luxembourg	+32 800 58580
Netherlands	0800 0233200
Russia	8800 5009286
Spain	0800 000154
Sweden	0200 882255
Switzerland	0800 805353
	Opt. 1 (DE)
	Opt. 2 (FR)
	Opt. 3 (IT)
United Kingdom	0800 0260637

For other unlisted countries:  
[www.keysight.com/find/contactus](http://www.keysight.com/find/contactus)  
 (BP-07-10-14)