

Keysight Technologies

IO Libraries Suite 16

Industries and Applications

- Aerospace and Defense
- Electronic Test
- Wireless Communications
- Radar and Wideband Signal Capture

Product Description

Keysight Technologies, Inc. IO Libraries Suite includes the libraries and tools to speed up connection and control of instruments. The IO Libraries Suite 16 continues to enhance and improve the connectivity experience providing easy connection to PXI instruments as well as GPIB, USB, LAN, RS-232 and VXI.

Main Features and Benefits

Product features	Your benefit
Automatically detects chassis and instruments connected to the PC.	Simplifies the connection process.
Automatically configures interfaces after detecting chassis and instruments.	Accelerates development process decreasing time to first measurement.
Compatible with all interfaces: PXI, GPIB, USB, Ethernet/LAN, RS-232 and VXI test instruments from a variety of vendors.	Supports mixed systems and maintains investments as well as future changes.
Enables instrument communication for a variety of development environments including Keysight VEE Pro, MATLAB, NI LabVIEW, Microsoft Visual Studio and more.	Flexibility for integration into the development environment of choice.
Automatic notification of updates.	Be confident that you are using the latest version of the software
Calibrated Core Exchange Strategy	Fast repair and turnaround time

The Keysight IO Libraries Suite 16 provides all of the software needed to quickly detect and connect to instruments of all types and manage the communication between the PC and chassis and instruments.

Keysight VISA and Connection Expert support PXI, PXIe, and PCIe devices. Instrument drivers and soft front panels can be updated and launched from Connection Expert. The PXI Resource Manager will discover and display chassis and modules. New interfaces and new capabilities continue to be added to the connectivity software to provide users with an improved connection experience.

Chassis slot compatibility: Works with all interfaces

*Challenge the Boundaries of Test
Keysight Modular Products*

Ordering Information

Model	
Keysight IO Libraries Suite 16	Free software download at: www.keysight.com/find/iosuite
Related Products	
Keysight Command Expert:	www.keysight.com/find/commandexpert
Supported development environments and supported I/O software	
VB6	VISA COM, VISA, SICL, Keysight 488, Excel VBA
C/C++, Managed C++	VISA COM, VISA, Keysight 488
.NET languages (VB.NET, C#)	VISA COM, VISA, Keysight 488
LabVIEW	VISA, Keysight 488
MATLAB	VISA
Note: Keysight IO Libraries Suite supports VEE Pro program development with drivers and/or Direct I/O.	
I/O software	
Connection Expert	Automatically scans and configures your instrument IO, helps you get connected quickly and easily and displays the status of your interfaces and instruments.
Interactive IO	Let's you quickly send commands to instruments and read responses.
Interactive LXI	Allows you to send and receive LXI events, monitor, and manage LXI instrument precision clocks.
IO Monitor	Let's you monitor and debug I/O calls made on any of Keysight's supported buses using Keysight SICL, VISA, VISA.COM, or Keysight IVI instrument drivers (released after September 18, 2010).
IO Control	Provides easy access to the IO Libraries Suite from the Windows system tray
VXI resource manager	Provides configuration of the IEEE 1394 connection from PC to VXI.
v1Find32	Debug utility uses VISA functions to find resources and lists them in a console window

Software Information

Keysight IO Libraries Suite 16 is a Windows-based software package that can be downloaded for free from the Keysight website.

Supported operating systems	Microsoft Windows XP (32-bit) Microsoft Windows 8 (32/64-bit) Microsoft Windows 7 (32/64-bit)
Standard compliant drivers	IVI-COM, IVI-C, LabVIEW, MATLAB
Supported application development environments (ADE)	Visual Studio (C/C++, C#, VB.NET), LabVIEW, LabWindows/CVI, MATLAB, VEE

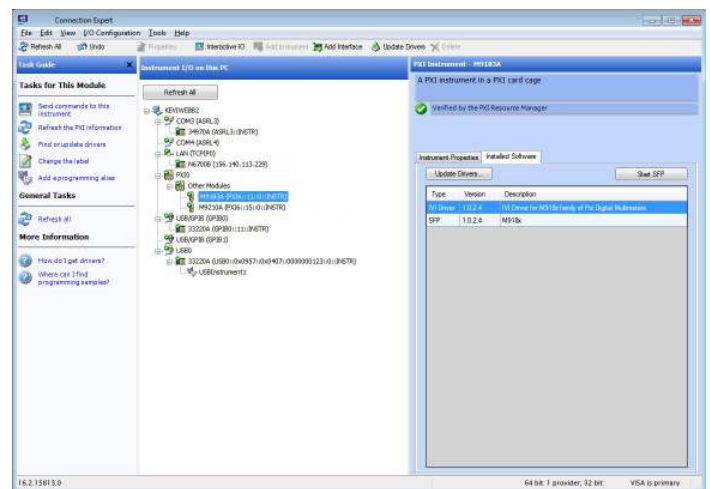


Figure 1. Keysight IO Libraries Suite

Challenge the Boundaries of Test Keysight Modular Products

For more information on Keysight Technologies' products, applications or services, please contact your local Keysight office. The complete list is available at: www.keysight.com/find/contactus

PICMG and the PICMG logo, CompactPCI and the CompactPCI logo, "PCIe" and "PCI EXPRESS" are registered trademarks and/or service marks of PC-SIG.

www.keysight.com/find/modular
www.keysight.com/find/m9391a

This information is subject to change without notice.
© Keysight Technologies, 2013-2014.
Printed in USA, August 3, 2014
5991-1244EN
www.keysight.com