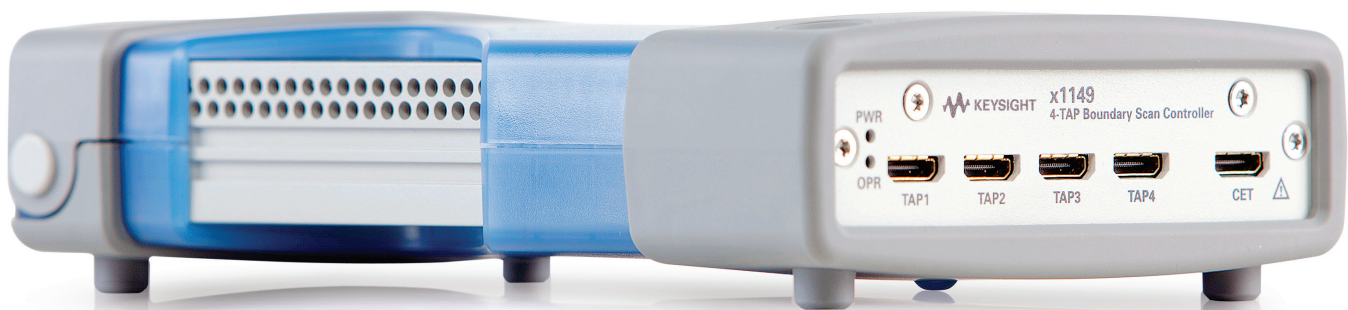


Keysight Technologies

Configuring Boundary Scan Chains on Keysight x1149 Boundary Scan Analyzer

Application Note



Introduction

A boundary scan chain consists of two or more boundary scan integrated circuit (IC) devices where the test data output (TDO) of the first boundary scan device in the chain is connected to the test data input (TDI) of the second boundary scan device to form a chain. The test mode select (TMS) and test clock input (TCK) signals are common for all the boundary scan devices in a chain. See Figure 1.

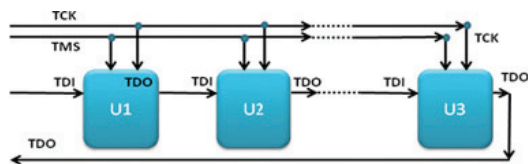


Figure 1. A boundary scan chain

The Keysight Technologies, Inc. x1149 boundary scan software analyzes the circuit board netlist and the boundary scan description language (BSDL) of the boundary scan device, to detect the chain connections. The boundary scan chain is the key in maximizing the boundary scan test coverage of the board.

Engineers who use typical benchtop boundary scan tools today need knowledge of the board to define the chain. This is a time-consuming process as engineering time is needed to manually define the connection of the printed circuit board boundary scan chain before the software can detect the boundary scan chain.

This application note provides the procedure for configuring the boundary scan chain of a board.

1. Input file

- The preferred input file for the Keysight x1149 boundary scan analyzer software is the Keysight i3070 board file, or a CAD file (see Table 1 for CAD format list).

Table 1. List of supported CAD formats

CAD Format	
1	Accel
2	Cadence (ascii)
3	Cadence (netlist)
4	FATF
5	Gencad
6	IPC
7	Mentor (Neutral)
8	ODB++ (tgz)
9	PCAD
10	Power PCB (Pads)
11	Protel
12	Telesis
13	Zuken (CR5000)
14	Zuken (CR5000-1)

- Bill of material (BOM) in csv format is also supported to define the part number and value of the devices tested during boundary scan test. The part number of the boundary scan device, as well as those for non-boundary scan digital devices are important for the Keysight x1149 software to correctly identify the BSDL and libraries needed to generate the boundary scan chain and test.

2. Loading the input file (i3070 board file) (continued)

Note: CAD data is also translated into board file.

- Select board type and folder that contains the BSDL and libraries.

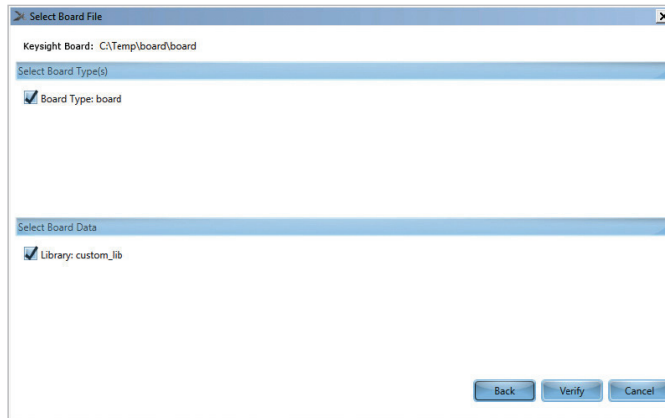
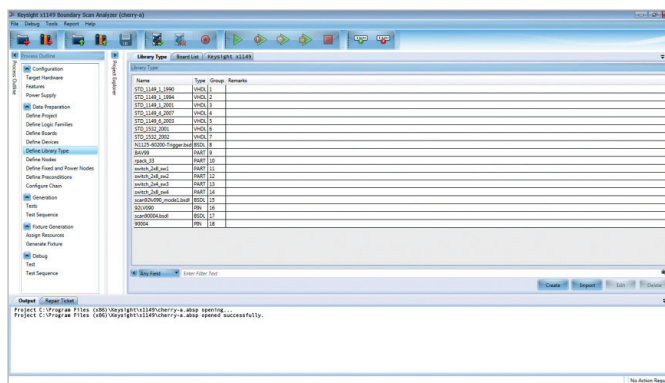
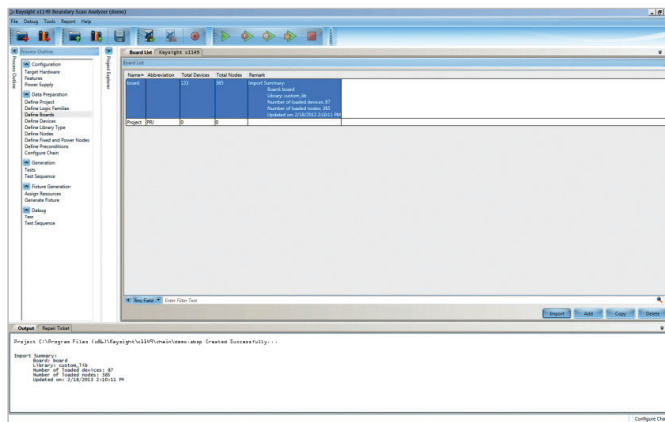


Figure 4: Select the board type and the board data (BSDL/library folder)

- Board file loaded and the BSDL/Libraries.



3. Part number definition and assignment of the BSDL file and libraries

- The part number that matches the BSDL and libraries in the database will be assigned automatically.

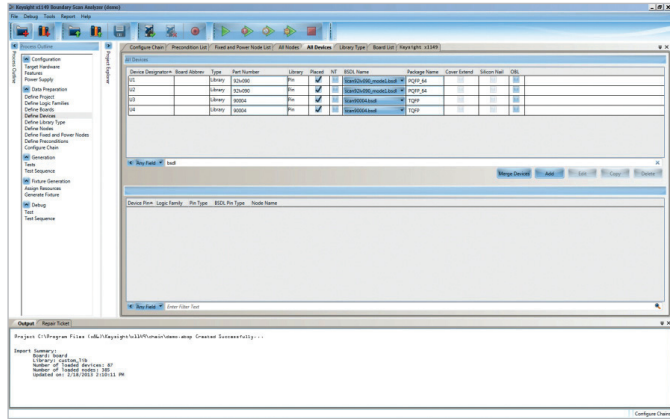


Figure 6. Device list with BSDL and library assigned

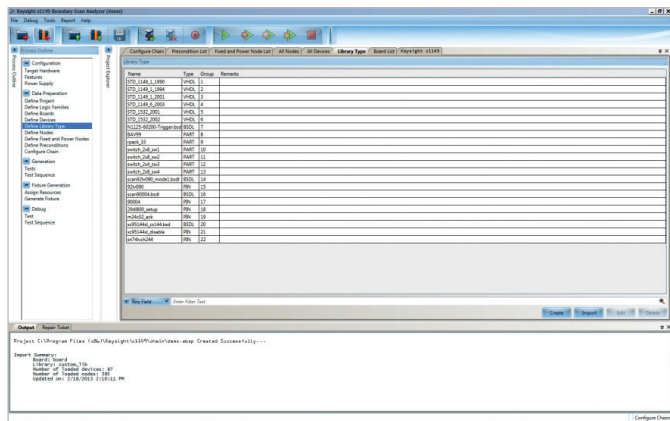


Figure 7. Libraries, including BSDL, part description and digital libraries, loaded into the database

4. Fixed node assignment

- Define the fixed and ground nodes.

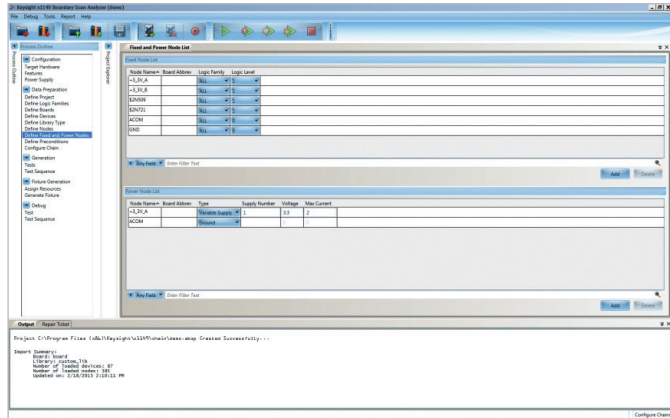


Figure 6. Defining the fixed and ground node

5. Chain configuration

- Click **Process Outline > Configure Chain**.

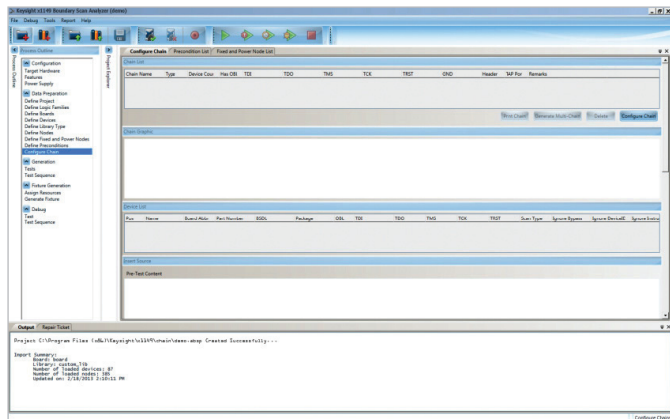


Figure 7. Configuring the chain

6. The Keysight x1149 identifies the chains in the board

- Click **Next**.
- Select the chains that will be used by the Keysight x1149 for test generation.

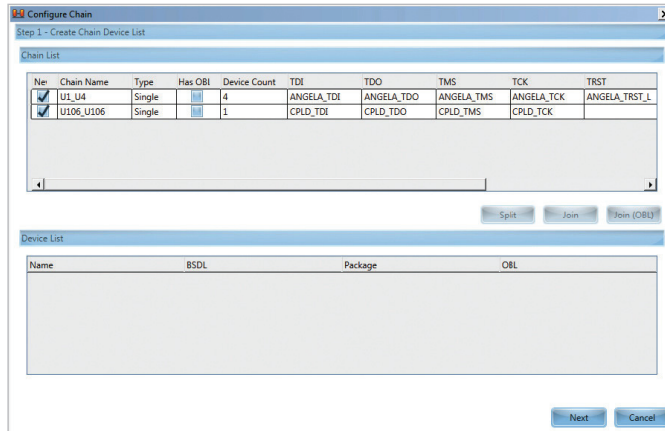


Figure 8. Boundary scan chains

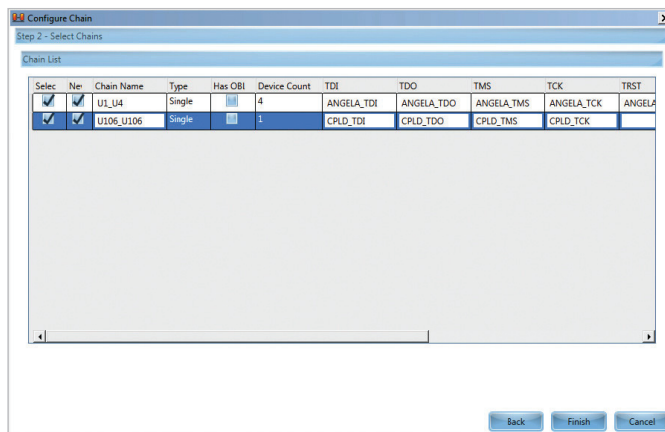


Figure 9. Select the boundary scan chains

7. Configured boundary scan chains with the following information

- Chain list
 - Chain type (single or multi)
 - Number of boundary scan device in a chain
 - Node names: TCK,TMS,TDI,TDO and TRST
 - Header
 - TAP port

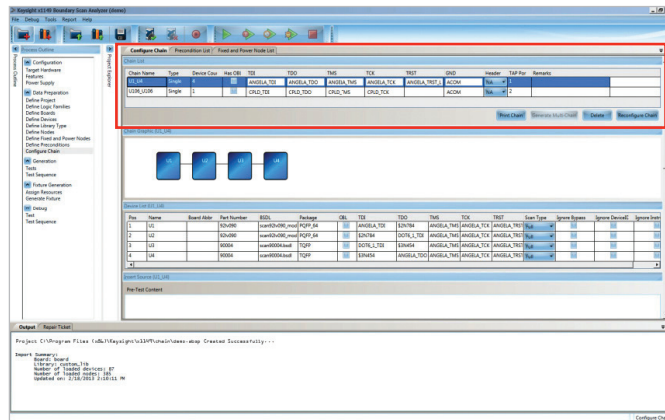


Figure 10: Chain list information

- Chain graphic
 - Each device will show TAP nodes and device pin when the mouse icon is placed over the device

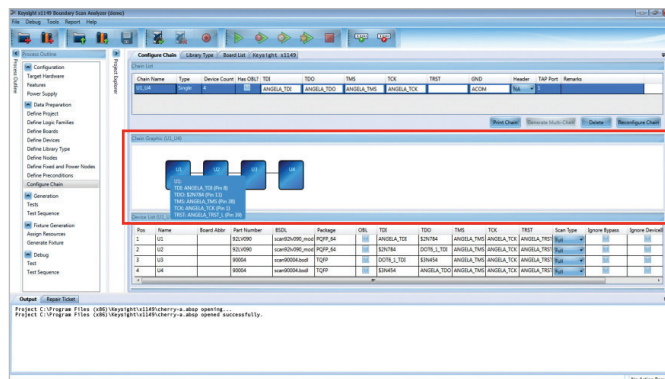


Figure 11. Chain graphic with TAP information

7. Configured boundary scan chains with the following information (continued)

- Device List shows the following:
 - Device position in the chain
 - Device name
 - Board abbreviation
 - Device part number
 - BSDL file used for the device
 - Package define in the BSDL
 - Check if the device is an on-board linker (OBL)
 - Device TAP information (TDI, TDO, TMS, TCK and TRST)
 - Scan type (full or TAP only)
 - Ignore (Bypass, DeviceID and Instruction)

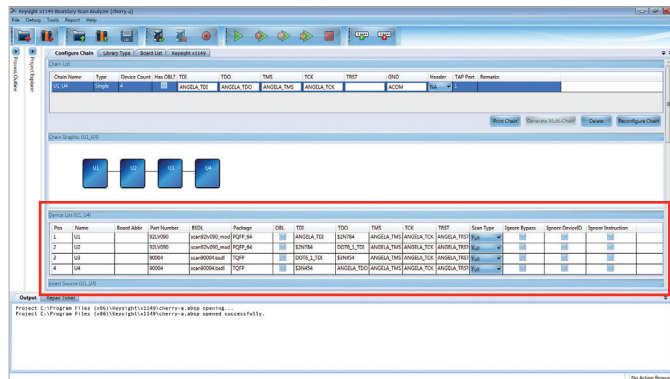


Figure 11. Device list information



myKeysight

www.keysight.com/find/mykeysight

A personalized view into the information most relevant to you.

Keysight Channel Partners

www.keysight.com/find/channelpartners

Get the best of both worlds: Keysight's measurement expertise and product breadth, combined with channel partner convenience.

www.keysight.com/find/x1149

For more information on Keysight Technologies' products, applications or services, please contact your local Keysight office. The complete list is available at: www.keysight.com/find/contactus

Americas

Canada	(877) 894 4414
Brazil	55 11 3351 7010
Mexico	001 800 254 2440
United States	(800) 829 4444

Asia Pacific

Australia	1 800 629 485
China	800 810 0189
Hong Kong	800 938 693
India	1 800 112 929
Japan	0120 (421) 345
Korea	080 769 0800
Malaysia	1 800 888 848
Singapore	1 800 375 8100
Taiwan	0800 047 866
Other AP Countries	(65) 6375 8100

Europe & Middle East

Austria	0800 001122
Belgium	0800 58580
Finland	0800 523252
France	0805 980333
Germany	0800 6270999
Ireland	1800 832700
Israel	1 809 343051
Italy	800 599100
Luxembourg	+32 800 58580
Netherlands	0800 0233200
Russia	8800 5009286
Spain	0800 000154
Sweden	0200 882255
Switzerland	0800 805353
	Opt. 1 (DE)
	Opt. 2 (FR)
	Opt. 3 (IT)
United Kingdom	0800 0260637

For other unlisted countries:
www.keysight.com/find/contactus
(BP-07-01-14)

