

**Component-Level Information Packet
for 08713-60009³**

Receiver 75 Ohms (8713B/14B)



HP Part No. 08712-90042
Printed in USA February 1996

Notice. The information contained in this document is subject to change without notice.

Hewlett-Packard makes no warranty of any kind with regard to this material, including, but not limited to, the implied warranties of merchantability and fitness for a particular purpose. Hewlett-Packard shall not be liable for errors contained herein or for incidental or consequential damages in connection with the furnishing, performance, or use of this material.

©Copyright Hewlett-Packard Company 1990, 1991, 1992, 1993, 1994, 1995
All Rights Reserved. Reproduction, adaptation, or translation without prior written permission is prohibited, except as allowed under the copyright laws.

**HP Part Number 08713-60009
Receiver 75 Ohms (8713B/14B)**

Reference Designator	HP Part Number	Qty	Description	Mfr Code	Mfr Part Number
C1	0160-6734	1	CAP-FXD 0.047uF +-10% 50 V CER X7R	28480	0160-6734
C2	0160-6734	1	CAP-FXD 0.047uF +-10% 50 V CER X7R	28480	0160-6734
C4	0160-6734	1	CAP-FXD 0.047uF +-10% 50 V CER X7R	28480	0160-6734
C5	0160-6734	1	CAP-FXD 0.047uF +-10% 50 V CER X7R	28480	0160-6734
C6	0160-6734	1	CAP-FXD 0.047uF +-10% 50 V CER X7R	28480	0160-6734
C7	0160-6734	1	CAP-FXD 0.047uF +-10% 50 V CER X7R	28480	0160-6734
C8	0160-6734	1	CAP-FXD 0.047uF +-10% 50 V CER X7R	28480	0160-6734
C9	0160-6734	1	CAP-FXD 0.047uF +-10% 50 V CER X7R	28480	0160-6734
C10	0180-4287	1	CAP-FXD 10uF +-20% 35 V TA	28480	0180-4287
C11	0180-4287	1	CAP-FXD 10uF +-20% 35 V TA	28480	0180-4287
C12	0180-4287	1	CAP-FXD 10uF +-20% 35 V TA	28480	0180-4287
C13	0180-4287	1	CAP-FXD 10uF +-20% 35 V TA	28480	0180-4287
C14	0180-4287	1	CAP-FXD 10uF +-20% 35 V TA	28480	0180-4287
C25	0180-4287	1	CAP-FXD 10uF +-20% 35 V TA	28480	0180-4287
C78	0160-6107	1	CAP-FXD 3900pF +-5% 50 V CER C0G	28480	0160-6107
C79	0160-6107	1	CAP-FXD 3900pF +-5% 50 V CER C0G	28480	0160-6107
C80	0160-6734	1	CAP-FXD 0.047uF +-10% 50 V CER X7R	28480	0160-6734
C81	0160-6734	1	CAP-FXD 0.047uF +-10% 50 V CER X7R	28480	0160-6734
C82	0160-6107	1	CAP-FXD 3900pF +-5% 50 V CER C0G	28480	0160-6107
C83	0160-6107	1	CAP-FXD 3900pF +-5% 50 V CER C0G	28480	0160-6107
C84	0180-4287	1	CAP-FXD 10uF +-20% 35 V TA	28480	0180-4287
C85	0160-6222	1	CAP-FXD 0.1uF +-10% 50 V CER X7R	28480	0160-6222
C86	0160-6222	1	CAP-FXD 0.1uF +-10% 50 V CER X7R	28480	0160-6222
C87	0160-6734	1	CAP-FXD 0.047uF +-10% 50 V CER X7R	28480	0160-6734
C88	0160-6734	1	CAP-FXD 0.047uF +-10% 50 V CER X7R	28480	0160-6734
C89	0180-4287	1	CAP-FXD 10uF +-20% 35 V TA	28480	0180-4287
C90	0180-4287	1	CAP-FXD 10uF +-20% 35 V TA	28480	0180-4287
C91	0160-6222	1	CAP-FXD 0.1uF +-10% 50 V CER X7R	28480	0160-6222
C92	0160-6222	1	CAP-FXD 0.1uF +-10% 50 V CER X7R	28480	0160-6222
C93	0160-6107	1	CAP-FXD 3900pF +-5% 50 V CER C0G	28480	0160-6107
C94	0160-6107	1	CAP-FXD 3900pF +-5% 50 V CER C0G	28480	0160-6107
C95	0160-5961	1	CAP-FXD 22pF +-5% 50 V CER C0G	28480	0160-5961
C96	0160-6734	1	CAP-FXD 0.047uF +-10% 50 V CER X7R	28480	0160-6734
C97	0160-6734	1	CAP-FXD 0.047uF +-10% 50 V CER X7R	28480	0160-6734
C98	0160-6107	1	CAP-FXD 3900pF +-5% 50 V CER C0G	28480	0160-6107

**Indicates factory-selected value*

HP Part Number 08713-60009
Receiver 75 Ohms (8713B/14B) (continued)

Reference Designator	HP Part Number	Qty	Description	Mfr Code	Mfr Part Number
C99	0160-6107	1	CAP-FXD 3900pF +-5% 50 V CER C0G	28480	0160-6107
C100	0180-4287	1	CAP-FXD 10uF +-20% 35 V TA	28480	0180-4287
C102	0160-6222	1	CAP-FXD 0.1uF +-10% 50 V CER X7R	28480	0160-6222
C103	0160-6222	1	CAP-FXD 0.1uF +-10% 50 V CER X7R	28480	0160-6222
C104	0160-6734	1	CAP-FXD 0.047uF +-10% 50 V CER X7R	28480	0160-6734
C105	0160-6734	1	CAP-FXD 0.047uF +-10% 50 V CER X7R	28480	0160-6734
C108	0160-6222	1	CAP-FXD 0.1uF +-10% 50 V CER X7R	28480	0160-6222
C109	0160-6222	1	CAP-FXD 0.1uF +-10% 50 V CER X7R	28480	0160-6222
C110	0180-4287	1	CAP-FXD 10uF +-20% 35 V TA	28480	0180-4287
C112	0160-5961	1	CAP-FXD 22pF +-5% 50 V CER C0G	28480	0160-5961
C113	0160-6734	1	CAP-FXD 0.047uF +-10% 50 V CER X7R	28480	0160-6734
C116	0160-6734	1	CAP-FXD 0.047uF +-10% 50 V CER X7R	28480	0160-6734
C122	0160-6734	1	CAP-FXD 0.047uF +-10% 50 V CER X7R	28480	0160-6734
C126	0160-6734	1	CAP-FXD 0.047uF +-10% 50 V CER X7R	28480	0160-6734
C133	0160-6734	1	CAP-FXD 0.047uF +-10% 50 V CER X7R	28480	0160-6734
C137	0160-6096	1	CAP-FXD 470pF +-5% 50 V CER C0G	28480	0160-6096
C138	0160-6096	1	CAP-FXD 470pF +-5% 50 V CER C0G	28480	0160-6096
C139	0160-6096	1	CAP-FXD 470pF +-5% 50 V CER C0G	28480	0160-6096
C140	0160-6096	1	CAP-FXD 470pF +-5% 50 V CER C0G	28480	0160-6096
C141	0160-6734	1	CAP-FXD 0.047uF +-10% 50 V CER X7R	28480	0160-6734
C142	0160-6734	1	CAP-FXD 0.047uF +-10% 50 V CER X7R	28480	0160-6734
C145	0160-5957	1	CAP-FXD 47pF +-5% 50 V CER C0G	28480	0160-5957
C147	0160-5957	1	CAP-FXD 47pF +-5% 50 V CER C0G	28480	0160-5957
C149	0160-6734	1	CAP-FXD 0.047uF +-10% 50 V CER X7R	28480	0160-6734
C153	0160-6734	1	CAP-FXD 0.047uF +-10% 50 V CER X7R	28480	0160-6734
C154	0160-6734	1	CAP-FXD 0.047uF +-10% 50 V CER X7R	28480	0160-6734
C155	0160-6104	1	CAP-FXD 2200pF +-5% 50 V CER C0G	28480	0160-6104
C197	0160-5952	1	CAP-FXD 330pF +-5% 50 V CER C0G	28480	0160-5952
C198	0160-5952	1	CAP-FXD 330pF +-5% 50 V CER C0G	28480	0160-5952
C199	0160-5952	1	CAP-FXD 330pF +-5% 50 V CER C0G	28480	0160-5952
C200	0160-5952	1	CAP-FXD 330pF +-5% 50 V CER C0G	28480	0160-5952
C201	0160-7751	1	CAP-FXD 0.01uF +-10% 50 V CER X7R	28480	0160-7751
C202	0160-7751	1	CAP-FXD 0.01uF +-10% 50 V CER X7R	28480	0160-7751
C203	0160-7856	1	CAP-FXD 330pF +-10% 50 V CER X7R	28480	0160-7856
C204	0160-7751	1	CAP-FXD 0.01uF +-10% 50 V CER X7R	28480	0160-7751

HP Part Number 08713-60009
Receiver 75 Ohms (8713B/14B) (continued)

Reference Designator	HP Part Number	Qty	Description	Mfr Code	Mfr Part Number
C205	0160-7751	1	CAP-FXD 0.01uF +-10% 50 V CER X7R	28480	0160-7751
C206	0160-7751	1	CAP-FXD 0.01uF +-10% 50 V CER X7R	28480	0160-7751
C207	0160-7856	1	CAP-FXD 330pF +-10% 50 V CER X7R	28480	0160-7856
C208	0160-7751	1	CAP-FXD 0.01uF +-10% 50 V CER X7R	28480	0160-7751
C209	0160-7856	1	CAP-FXD 330pF +-10% 50 V CER X7R	28480	0160-7856
C210	0160-7856	1	CAP-FXD 330pF +-10% 50 V CER X7R	28480	0160-7856
C211	0160-5952	1	CAP-FXD 330pF +-5% 50 V CER C0G	28480	0160-5952
C212	0160-7751	1	CAP-FXD 0.01uF +-10% 50 V CER X7R	28480	0160-7751
C213	0160-7751	1	CAP-FXD 0.01uF +-10% 50 V CER X7R	28480	0160-7751
C214	0160-7751	1	CAP-FXD 0.01uF +-10% 50 V CER X7R	28480	0160-7751
C215	0160-7751	1	CAP-FXD 0.01uF +-10% 50 V CER X7R	28480	0160-7751
C216	0160-7751	1	CAP-FXD 0.01uF +-10% 50 V CER X7R	28480	0160-7751
C217	0160-7751	1	CAP-FXD 0.01uF +-10% 50 V CER X7R	28480	0160-7751
C218	0160-6734	1	CAP-FXD 0.047uF +-10% 50 V CER X7R	28480	0160-6734
C219	0180-3751	1	CAP-FXD 1uF +-20% 35 V TA	28480	0180-3751
C220	0160-6734	1	CAP-FXD 0.047uF +-10% 50 V CER X7R	28480	0160-6734
C221	0160-5944	1	CAP-FXD 0.047uF +-10% 50 V CER X7R	28480	0160-5944
C222	0160-7751	1	CAP-FXD 0.01uF +-10% 50 V CER X7R	28480	0160-7751
C223	0160-5944	1	CAP-FXD 0.047uF +-10% 50 V CER X7R	28480	0160-5944
C224	0160-7751	1	CAP-FXD 0.01uF +-10% 50 V CER X7R	28480	0160-7751
C225	0160-5944	1	CAP-FXD 0.047uF +-10% 50 V CER X7R	28480	0160-5944
C227	0160-7751	1	CAP-FXD 0.01uF +-10% 50 V CER X7R	28480	0160-7751
C228	0160-5944	1	CAP-FXD 0.047uF +-10% 50 V CER X7R	28480	0160-5944
C230	0160-5944	1	CAP-FXD 0.047uF +-10% 50 V CER X7R	28480	0160-5944
C231	0160-7835	1	CAP-FXD 100pF +-5% 50 V CER C0G	28480	0160-7835
C232	0160-7835	1	CAP-FXD 100pF +-5% 50 V CER C0G	28480	0160-7835
C233	0160-5944	1	CAP-FXD 0.047uF +-10% 50 V CER X7R	28480	0160-5944
C234	0160-5944	1	CAP-FXD 0.047uF +-10% 50 V CER X7R	28480	0160-5944
C235	0160-5944	1	CAP-FXD 0.047uF +-10% 50 V CER X7R	28480	0160-5944
C239	0160-5944	1	CAP-FXD 0.047uF +-10% 50 V CER X7R	28480	0160-5944
C240	0160-5944	1	CAP-FXD 0.047uF +-10% 50 V CER X7R	28480	0160-5944
C241	0160-7751	1	CAP-FXD 0.01uF +-10% 50 V CER X7R	28480	0160-7751
C242	0160-7751	1	CAP-FXD 0.01uF +-10% 50 V CER X7R	28480	0160-7751
C243	0160-7751	1	CAP-FXD 0.01uF +-10% 50 V CER X7R	28480	0160-7751
C244	0160-7856	1	CAP-FXD 330pF +-10% 50 V CER X7R	28480	0160-7856

**Indicates factory-selected value*

HP Part Number 08713-60009
Receiver 75 Ohms (8713B/14B) (continued)

Reference Designator	HP Part Number	Qty	Description	Mfr Code	Mfr Part Number
C250	0160-6734	1	CAP-FXD 0.047uF +-10% 50 V CER X7R	28480	0160-6734
C251	0180-3751	1	CAP-FXD 1uF +-20% 35 V TA	28480	0180-3751
C252	0160-6734	1	CAP-FXD 0.047uF +-10% 50 V CER X7R	28480	0160-6734
C253	0160-5944	1	CAP-FXD 0.047uF +-10% 50 V CER X7R	28480	0160-5944
C254	0160-7751	1	CAP-FXD 0.01uF +-10% 50 V CER X7R	28480	0160-7751
C255	0160-5944	1	CAP-FXD 0.047uF +-10% 50 V CER X7R	28480	0160-5944
C256	0160-7751	1	CAP-FXD 0.01uF +-10% 50 V CER X7R	28480	0160-7751
C257	0160-5944	1	CAP-FXD 0.047uF +-10% 50 V CER X7R	28480	0160-5944
C259	0160-7751	1	CAP-FXD 0.01uF +-10% 50 V CER X7R	28480	0160-7751
C260	0160-5944	1	CAP-FXD 0.047uF +-10% 50 V CER X7R	28480	0160-5944
C262	0160-5944	1	CAP-FXD 0.047uF +-10% 50 V CER X7R	28480	0160-5944
C263	0160-7835	1	CAP-FXD 100pF +-5% 50 V CER C0G	28480	0160-7835
C264	0160-7835	1	CAP-FXD 100pF +-5% 50 V CER C0G	28480	0160-7835
C265	0160-5944	1	CAP-FXD 0.047uF +-10% 50 V CER X7R	28480	0160-5944
C266	0160-5944	1	CAP-FXD 0.047uF +-10% 50 V CER X7R	28480	0160-5944
C267	0160-5944	1	CAP-FXD 0.047uF +-10% 50 V CER X7R	28480	0160-5944
C268	0160-5944	1	CAP-FXD 0.047uF +-10% 50 V CER X7R	28480	0160-5944
C270	0160-7751	1	CAP-FXD 0.01uF +-10% 50 V CER X7R	28480	0160-7751
C271	0160-7751	1	CAP-FXD 0.01uF +-10% 50 V CER X7R	28480	0160-7751
C272	0160-7751	1	CAP-FXD 0.01uF +-10% 50 V CER X7R	28480	0160-7751
C273	0160-7856	1	CAP-FXD 330pF +-10% 50 V CER X7R	28480	0160-7856
C275	0160-7751	1	CAP-FXD 0.01uF +-10% 50 V CER X7R	28480	0160-7751
C276	0160-7751	1	CAP-FXD 0.01uF +-10% 50 V CER X7R	28480	0160-7751
C277	0160-7856	1	CAP-FXD 330pF +-10% 50 V CER X7R	28480	0160-7856
C278	0160-7751	1	CAP-FXD 0.01uF +-10% 50 V CER X7R	28480	0160-7751
C279	0160-7751	1	CAP-FXD 0.01uF +-10% 50 V CER X7R	28480	0160-7751
C280	0160-7751	1	CAP-FXD 0.01uF +-10% 50 V CER X7R	28480	0160-7751
C281	0160-7751	1	CAP-FXD 0.01uF +-10% 50 V CER X7R	28480	0160-7751
C282	0160-7751	1	CAP-FXD 0.01uF +-10% 50 V CER X7R	28480	0160-7751
C283	0160-7858	1	CAP-FXD 390pF +-10% 50 V CER X7R	28480	0160-7858
C284	0160-7751	1	CAP-FXD 0.01uF +-10% 50 V CER X7R	28480	0160-7751
C285	0160-7856	1	CAP-FXD 330pF +-10% 50 V CER X7R	28480	0160-7856
C286	0160-7751	1	CAP-FXD 0.01uF +-10% 50 V CER X7R	28480	0160-7751
C287	0160-7751	1	CAP-FXD 0.01uF +-10% 50 V CER X7R	28480	0160-7751
C288	0160-7751	1	CAP-FXD 0.01uF +-10% 50 V CER X7R	28480	0160-7751

**HP Part Number 08713-60009
Receiver 75 Ohms (8713B/14B) (continued)**

Reference Designator	HP Part Number	Qty	Description	Mfr Code	Mfr Part Number
C289	0160-7751	1	CAP-FXD 0.01uF +-10% 50 V CER X7R	28480	0160-7751
C290	0160-7856	1	CAP-FXD 330pF +-10% 50 V CER X7R	28480	0160-7856
C291	0160-7856	1	CAP-FXD 330pF +-10% 50 V CER X7R	28480	0160-7856
C292	0160-5944	1	CAP-FXD 0.047uF +-10% 50 V CER X7R	28480	0160-5944
C301	0160-6734	1	CAP-FXD 0.047uF +-10% 50 V CER X7R	28480	0160-6734
C302	0160-6734	1	CAP-FXD 0.047uF +-10% 50 V CER X7R	28480	0160-6734
C303	0160-6734	1	CAP-FXD 0.047uF +-10% 50 V CER X7R	28480	0160-6734
C304	0160-6734	1	CAP-FXD 0.047uF +-10% 50 V CER X7R	28480	0160-6734
C329	0160-6734	1	CAP-FXD 0.047uF +-10% 50 V CER X7R	28480	0160-6734
C338	0160-6734	1	CAP-FXD 0.047uF +-10% 50 V CER X7R	28480	0160-6734
C339	0160-6734	1	CAP-FXD 0.047uF +-10% 50 V CER X7R	28480	0160-6734
C340	0160-7333	1	CAP-FXD 0.068uF +-10% 50 V CER X7R	28480	0160-7333
C341	0160-7333	1	CAP-FXD 0.068uF +-10% 50 V CER X7R	28480	0160-7333
C342	0180-4287	1	CAP-FXD 10uF +-20% 35 V TA	28480	0180-4287
C343	0180-4287	1	CAP-FXD 10uF +-20% 35 V TA	28480	0180-4287
C344	0160-6734	1	CAP-FXD 0.047uF +-10% 50 V CER X7R	28480	0160-6734
C345	0160-6734	1	CAP-FXD 0.047uF +-10% 50 V CER X7R	28480	0160-6734
C346	0180-4287	1	CAP-FXD 10uF +-20% 35 V TA	28480	0180-4287
C347	0180-3752	1	CAP-FXD 3.3uF +-20% 35 V TA	28480	0180-3752
C348	0180-3751	1	CAP-FXD 1uF +-20% 35 V TA	28480	0180-3751
C349	0160-6734	1	CAP-FXD 0.047uF +-10% 50 V CER X7R	28480	0160-6734
C350	0160-6734	1	CAP-FXD 0.047uF +-10% 50 V CER X7R	28480	0160-6734
C351	0160-7333	1	CAP-FXD 0.068uF +-10% 50 V CER X7R	28480	0160-7333
C352	0160-7333	1	CAP-FXD 0.068uF +-10% 50 V CER X7R	28480	0160-7333
C353	0180-4287	1	CAP-FXD 10uF +-20% 35 V TA	28480	0180-4287
C354	0180-4287	1	CAP-FXD 10uF +-20% 35 V TA	28480	0180-4287
C355	0160-6734	1	CAP-FXD 0.047uF +-10% 50 V CER X7R	28480	0160-6734
C356	0180-4287	1	CAP-FXD 10uF +-20% 35 V TA	28480	0180-4287
C357	0180-3752	1	CAP-FXD 3.3uF +-20% 35 V TA	28480	0180-3752
C358	0180-3751	1	CAP-FXD 1uF +-20% 35 V TA	28480	0180-3751
C359	0160-6734	1	CAP-FXD 0.047uF +-10% 50 V CER X7R	28480	0160-6734
C400	0160-6734	1	CAP-FXD 0.047uF +-10% 50 V CER X7R	28480	0160-6734
C401	0160-6734	1	CAP-FXD 0.047uF +-10% 50 V CER X7R	28480	0160-6734
C402	0160-6734	1	CAP-FXD 0.047uF +-10% 50 V CER X7R	28480	0160-6734
C403	0160-6734	1	CAP-FXD 0.047uF +-10% 50 V CER X7R	28480	0160-6734

**Indicates factory-selected value*

HP Part Number 08713-60009
Receiver 75 Ohms (8713B/14B) (continued)

Reference Designator	HP Part Number	Qty	Description	Mfr Code	Mfr Part Number
C409	0160-6734	1	CAP-FXD 0.047uF +-10% 50 V CER X7R	28480	0160-6734
C410	0160-6734	1	CAP-FXD 0.047uF +-10% 50 V CER X7R	28480	0160-6734
C411	0160-6736	1	CAP-FXD 0.01uF +-10% 50 V CER X7R	28480	0160-6736
C412	0160-7333	1	CAP-FXD 0.068uF +-10% 50 V CER X7R	28480	0160-7333
C413	0160-7333	1	CAP-FXD 0.068uF +-10% 50 V CER X7R	28480	0160-7333
C417	0160-6734	1	CAP-FXD 0.047uF +-10% 50 V CER X7R	28480	0160-6734
C418	0160-6734	1	CAP-FXD 0.047uF +-10% 50 V CER X7R	28480	0160-6734
C419	0160-5967	1	CAP-FXD 100pF +-5% 50 V CER C0G	28480	0160-5967
C420	0160-5967	1	CAP-FXD 100pF +-5% 50 V CER C0G	28480	0160-5967
C421	0160-6222	1	CAP-FXD 0.1uF +-10% 50 V CER X7R	28480	0160-6222
C422	0160-6222	1	CAP-FXD 0.1uF +-10% 50 V CER X7R	28480	0160-6222
C423	0160-6734	1	CAP-FXD 0.047uF +-10% 50 V CER X7R	28480	0160-6734
C424	0160-6734	1	CAP-FXD 0.047uF +-10% 50 V CER X7R	28480	0160-6734
C429	0180-3749	1	CAP-FXD 0.22uF +-20% 35 V TA	28480	0180-3749
C430	0160-6734	1	CAP-FXD 0.047uF +-10% 50 V CER X7R	28480	0160-6734
C431	0180-3751	1	CAP-FXD 1uF +-20% 35 V TA	28480	0180-3751
C432	0160-6734	1	CAP-FXD 0.047uF +-10% 50 V CER X7R	28480	0160-6734
C433	0180-3751	1	CAP-FXD 1uF +-20% 35 V TA	28480	0180-3751
C434	0180-3751	1	CAP-FXD 1uF +-20% 35 V TA	28480	0180-3751
C435	0160-5944	1	CAP-FXD 0.047uF +-10% 50 V CER X7R	28480	0160-5944
C436	0160-7751	1	CAP-FXD 0.01uF +-10% 50 V CER X7R	28480	0160-7751
C437	0160-5944	1	CAP-FXD 0.047uF +-10% 50 V CER X7R	28480	0160-5944
C438	0160-7751	1	CAP-FXD 0.01uF +-10% 50 V CER X7R	28480	0160-7751
C439	0160-5944	1	CAP-FXD 0.047uF +-10% 50 V CER X7R	28480	0160-5944
C441	0160-7751	1	CAP-FXD 0.01uF +-10% 50 V CER X7R	28480	0160-7751
C442	0160-5944	1	CAP-FXD 0.047uF +-10% 50 V CER X7R	28480	0160-5944
C444	0160-5944	1	CAP-FXD 0.047uF +-10% 50 V CER X7R	28480	0160-5944
C445	0160-7835	1	CAP-FXD 100pF +-5% 50 V CER C0G	28480	0160-7835
C446	0160-7835	1	CAP-FXD 100pF +-5% 50 V CER C0G	28480	0160-7835
C447	0160-5944	1	CAP-FXD 0.047uF +-10% 50 V CER X7R	28480	0160-5944
C449	0160-5944	1	CAP-FXD 0.047uF +-10% 50 V CER X7R	28480	0160-5944
C450	0160-5944	1	CAP-FXD 0.047uF +-10% 50 V CER X7R	28480	0160-5944
C451	0160-5944	1	CAP-FXD 0.047uF +-10% 50 V CER X7R	28480	0160-5944
C452	0160-7751	1	CAP-FXD 0.01uF +-10% 50 V CER X7R	28480	0160-7751
C453	0160-7751	1	CAP-FXD 0.01uF +-10% 50 V CER X7R	28480	0160-7751

**HP Part Number 08713-60009
Receiver 75 Ohms (8713B/14B) (continued)**

Reference Designator	HP Part Number	Qty	Description	Mfr Code	Mfr Part Number
C454	0160-7856	1	CAP-FXD 330pF +-10% 50 V CER X7R	28480	0160-7856
C455	0160-7751	1	CAP-FXD 0.01uF +-10% 50 V CER X7R	28480	0160-7751
C456	0160-7856	1	CAP-FXD 330pF +-10% 50 V CER X7R	28480	0160-7856
C457	0160-7856	1	CAP-FXD 330pF +-10% 50 V CER X7R	28480	0160-7856
C458	0160-7856	1	CAP-FXD 330pF +-10% 50 V CER X7R	28480	0160-7856
C459	0160-7856	1	CAP-FXD 330pF +-10% 50 V CER X7R	28480	0160-7856
C460	0160-7856	1	CAP-FXD 330pF +-10% 50 V CER X7R	28480	0160-7856
C461	0160-7856	1	CAP-FXD 330pF +-10% 50 V CER X7R	28480	0160-7856
C462	0160-7856	1	CAP-FXD 330pF +-10% 50 V CER X7R	28480	0160-7856
C463	0160-7847	1	CAP-FXD 2.2pF +-11.36% 50 V CER C0G	28480	0160-7847
C464	0160-7711	1	CAP-FXD 4700pF +-10% 50 V CER X7R	28480	0160-7711
C465	0160-7835	1	CAP-FXD 100pF +-5% 50 V CER C0G	28480	0160-7835
C467	0160-7751	1	CAP-FXD 0.01uF +-10% 50 V CER X7R	28480	0160-7751
C468	0160-7751	1	CAP-FXD 0.01uF +-10% 50 V CER X7R	28480	0160-7751
C469	0160-7751	1	CAP-FXD 0.01uF +-10% 50 V CER X7R	28480	0160-7751
C470	0160-7748	1	CAP-FXD 1000pF +-10% 50 V CER X7R	28480	0160-7748
C471	0160-7748	1	CAP-FXD 1000pF +-10% 50 V CER X7R	28480	0160-7748
C472	0160-7748	1	CAP-FXD 1000pF +-10% 50 V CER X7R	28480	0160-7748
C473	0160-7856	1	CAP-FXD 330pF +-10% 50 V CER X7R	28480	0160-7856
C474	0160-5952	1	CAP-FXD 330pF +-5% 50 V CER C0G	28480	0160-5952
C475	0160-5944	1	CAP-FXD 0.047uF +-10% 50 V CER X7R	28480	0160-5944
C477	0160-7852	1	CAP-FXD 2700pF +-10% 50 V CER X7R	28480	0160-7852
C478	0160-7751	1	CAP-FXD 0.01uF +-10% 50 V CER X7R	28480	0160-7751
C479	0160-7751	1	CAP-FXD 0.01uF +-10% 50 V CER X7R	28480	0160-7751
C480	0160-7751	1	CAP-FXD 0.01uF +-10% 50 V CER X7R	28480	0160-7751
C481	0160-7856	1	CAP-FXD 330pF +-10% 50 V CER X7R	28480	0160-7856
C482	0160-7751	1	CAP-FXD 0.01uF +-10% 50 V CER X7R	28480	0160-7751
C483	0160-7853	1	CAP-FXD 3.3pF +-7.6% 50 V CER C0G	28480	0160-7853
C484	0160-7748	1	CAP-FXD 1000pF +-10% 50 V CER X7R	28480	0160-7748
C501	0160-6734	1	CAP-FXD 0.047uF +-10% 50 V CER X7R	28480	0160-6734
C502	0160-6104	1	CAP-FXD 2200pF +-5% 50 V CER C0G	28480	0160-6104
C503	0160-6734	1	CAP-FXD 0.047uF +-10% 50 V CER X7R	28480	0160-6734
C504	0160-6734	1	CAP-FXD 0.047uF +-10% 50 V CER X7R	28480	0160-6734
C505	0180-3751	1	CAP-FXD 1uF +-20% 35 V TA	28480	0180-3751
C506	0180-3751	1	CAP-FXD 1uF +-20% 35 V TA	28480	0180-3751

**Indicates factory-selected value*

HP Part Number 08713-60009
Receiver 75 Ohms (8713B/14B) (continued)

Reference Designator	HP Part Number	Qty	Description	Mfr Code	Mfr Part Number
C510	0160-5944	1	CAP-FXD 0.047uF +-10% 50 V CER X7R	28480	0160-5944
C512	0160-7751	1	CAP-FXD 0.01uF +-10% 50 V CER X7R	28480	0160-7751
C513	0160-5944	1	CAP-FXD 0.047uF +-10% 50 V CER X7R	28480	0160-5944
C514	0160-7333	1	CAP-FXD 0.068uF +-10% 50 V CER X7R	28480	0160-7333
C515	0160-5944	1	CAP-FXD 0.047uF +-10% 50 V CER X7R	28480	0160-5944
C516	0160-7333	1	CAP-FXD 0.068uF +-10% 50 V CER X7R	28480	0160-7333
C517	0160-5944	1	CAP-FXD 0.047uF +-10% 50 V CER X7R	28480	0160-5944
C518	0160-7333	1	CAP-FXD 0.068uF +-10% 50 V CER X7R	28480	0160-7333
C519	0160-5944	1	CAP-FXD 0.047uF +-10% 50 V CER X7R	28480	0160-5944
C520	0160-7333	1	CAP-FXD 0.068uF +-10% 50 V CER X7R	28480	0160-7333
C521	0160-5944	1	CAP-FXD 0.047uF +-10% 50 V CER X7R	28480	0160-5944
C522	0160-5944	1	CAP-FXD 0.047uF +-10% 50 V CER X7R	28480	0160-5944
C523	0160-5944	1	CAP-FXD 0.047uF +-10% 50 V CER X7R	28480	0160-5944
C524	0180-3751	1	CAP-FXD 1uF +-20% 35 V TA	28480	0180-3751
C525	0180-3751	1	CAP-FXD 1uF +-20% 35 V TA	28480	0180-3751
C526	0160-7333	1	CAP-FXD 0.068uF +-10% 50 V CER X7R	28480	0160-7333
C527	0160-7333	1	CAP-FXD 0.068uF +-10% 50 V CER X7R	28480	0160-7333
C528	0160-5944	1	CAP-FXD 0.047uF +-10% 50 V CER X7R	28480	0160-5944
C529	0160-5944	1	CAP-FXD 0.047uF +-10% 50 V CER X7R	28480	0160-5944
C530	0160-7856	1	CAP-FXD 330pF +-10% 50 V CER X7R	28480	0160-7856
C531	0160-7856	1	CAP-FXD 330pF +-10% 50 V CER X7R	28480	0160-7856
C532	0160-7856	1	CAP-FXD 330pF +-10% 50 V CER X7R	28480	0160-7856
C533	0160-7856	1	CAP-FXD 330pF +-10% 50 V CER X7R	28480	0160-7856
C534	0160-7751	1	CAP-FXD 0.01uF +-10% 50 V CER X7R	28480	0160-7751
C535	0160-7751	1	CAP-FXD 0.01uF +-10% 50 V CER X7R	28480	0160-7751
C536	0160-7751	1	CAP-FXD 0.01uF +-10% 50 V CER X7R	28480	0160-7751
C537	0160-7751	1	CAP-FXD 0.01uF +-10% 50 V CER X7R	28480	0160-7751
C538	0160-7856	1	CAP-FXD 330pF +-10% 50 V CER X7R	28480	0160-7856
C539	0160-7856	1	CAP-FXD 330pF +-10% 50 V CER X7R	28480	0160-7856
C540	0160-7809	1	CAP-FXD 0.015uF +-10% 50 V CER X7R	28480	0160-7809
C541	0160-7856	1	CAP-FXD 330pF +-10% 50 V CER X7R	28480	0160-7856
C543	0160-7856	1	CAP-FXD 330pF +-10% 50 V CER X7R	28480	0160-7856
C544	0160-7751	1	CAP-FXD 0.01uF +-10% 50 V CER X7R	28480	0160-7751
C545	0160-5944	1	CAP-FXD 0.047uF +-10% 50 V CER X7R	28480	0160-5944
C547	0160-6107	1	CAP-FXD 3900pF +-5% 50 V CER C0G	28480	0160-6107

HP Part Number 08713-60009
Receiver 75 Ohms (8713B/14B) (continued)

Reference Designator	HP Part Number	Qty	Description	Mfr Code	Mfr Part Number
C548	0160-6099	1	CAP-FXD 820pF +-5% 50 V CER C0G	28480	0160-6099
C549	0160-6107	1	CAP-FXD 3900pF +-5% 50 V CER C0G	28480	0160-6107
C550	0160-6107	1	CAP-FXD 3900pF +-5% 50 V CER C0G	28480	0160-6107
C551	0160-6107	1	CAP-FXD 3900pF +-5% 50 V CER C0G	28480	0160-6107
C552	0160-6107	1	CAP-FXD 3900pF +-5% 50 V CER C0G	28480	0160-6107
C553	0160-7809	1	CAP-FXD 0.015uF +-10% 50 V CER X7R	28480	0160-7809
C554	0160-5944	1	CAP-FXD 0.047uF +-10% 50 V CER X7R	28480	0160-5944
C555	0160-6107	1	CAP-FXD 3900pF +-5% 50 V CER C0G	28480	0160-6107
C556	0160-5944	1	CAP-FXD 0.047uF +-10% 50 V CER X7R	28480	0160-5944
C557	0160-5944	1	CAP-FXD 0.047uF +-10% 50 V CER X7R	28480	0160-5944
C558	0160-5944	1	CAP-FXD 0.047uF +-10% 50 V CER X7R	28480	0160-5944
C560	0160-7333	1	CAP-FXD 0.068uF +-10% 50 V CER X7R	28480	0160-7333
C561	0160-5944	1	CAP-FXD 0.047uF +-10% 50 V CER X7R	28480	0160-5944
C562	0160-7333	1	CAP-FXD 0.068uF +-10% 50 V CER X7R	28480	0160-7333
C563	0160-5944	1	CAP-FXD 0.047uF +-10% 50 V CER X7R	28480	0160-5944
C564	0180-3749	1	CAP-FXD 0.22uF +-20% 35 V TA	28480	0180-3749
C565	0160-7333	1	CAP-FXD 0.068uF +-10% 50 V CER X7R	28480	0160-7333
C566	0180-3749	1	CAP-FXD 0.22uF +-20% 35 V TA	28480	0180-3749
C567	0180-3749	1	CAP-FXD 0.22uF +-20% 35 V TA	28480	0180-3749
C568	0180-3749	1	CAP-FXD 0.22uF +-20% 35 V TA	28480	0180-3749
C569	0160-5944	1	CAP-FXD 0.047uF +-10% 50 V CER X7R	28480	0160-5944
C570	0160-5944	1	CAP-FXD 0.047uF +-10% 50 V CER X7R	28480	0160-5944
C571	0160-5944	1	CAP-FXD 0.047uF +-10% 50 V CER X7R	28480	0160-5944
C572	0160-5944	1	CAP-FXD 0.047uF +-10% 50 V CER X7R	28480	0160-5944
C573	0160-6107	1	CAP-FXD 3900pF +-5% 50 V CER C0G	28480	0160-6107
C574	0160-5944	1	CAP-FXD 0.047uF +-10% 50 V CER X7R	28480	0160-5944
C575	0160-5944	1	CAP-FXD 0.047uF +-10% 50 V CER X7R	28480	0160-5944
C577	0160-5944	1	CAP-FXD 0.047uF +-10% 50 V CER X7R	28480	0160-5944
C578	0160-5944	1	CAP-FXD 0.047uF +-10% 50 V CER X7R	28480	0160-5944
C579	0160-7867	1	CAP-FXD 6.8pF +-3.68% 50 V CER C0G	28480	0160-7867
C580	0160-7867	1	CAP-FXD 6.8pF +-3.68% 50 V CER C0G	28480	0160-7867
C581	0160-7809	1	CAP-FXD 0.015uF +-10% 50 V CER X7R	28480	0160-7809
C582	0160-7751	1	CAP-FXD 0.01uF +-10% 50 V CER X7R	28480	0160-7751
C583	0160-6107	1	CAP-FXD 3900pF +-5% 50 V CER C0G	28480	0160-6107
C584	0160-6107	1	CAP-FXD 3900pF +-5% 50 V CER C0G	28480	0160-6107

**Indicates factory-selected value*

HP Part Number 08713-60009
Receiver 75 Ohms (8713B/14B) (continued)

Reference Designator	HP Part Number	Qty	Description	Mfr Code	Mfr Part Number
C585	0160-6107	1	CAP-FXD 3900pF +5% 50 V CER C0G	28480	0160-6107
C586	0160-6107	1	CAP-FXD 3900pF +5% 50 V CER C0G	28480	0160-6107
C587	0160-6107	1	CAP-FXD 3900pF +5% 50 V CER C0G	28480	0160-6107
C588	0160-6099	1	CAP-FXD 820pF +5% 50 V CER C0G	28480	0160-6099
C590	0160-5944	1	CAP-FXD 0.047uF +-10% 50 V CER X7R	28480	0160-5944
C591	0160-5944	1	CAP-FXD 0.047uF +-10% 50 V CER X7R	28480	0160-5944
C592	0160-5944	1	CAP-FXD 0.047uF +-10% 50 V CER X7R	28480	0160-5944
C593	0160-5944	1	CAP-FXD 0.047uF +-10% 50 V CER X7R	28480	0160-5944
C594	0160-5944	1	CAP-FXD 0.047uF +-10% 50 V CER X7R	28480	0160-5944
C595	0160-5944	1	CAP-FXD 0.047uF +-10% 50 V CER X7R	28480	0160-5944
C598	0160-5944	1	CAP-FXD 0.047uF +-10% 50 V CER X7R	28480	0160-5944
C599	0160-5944	1	CAP-FXD 0.047uF +-10% 50 V CER X7R	28480	0160-5944
C600	0160-7867	1	CAP-FXD 6.8pF +3.68% 50 V CER C0G	28480	0160-7867
C601	0160-7867	1	CAP-FXD 6.8pF +3.68% 50 V CER C0G	28480	0160-7867
C602	0160-7751	1	CAP-FXD 0.01uF +-10% 50 V CER X7R	28480	0160-7751
C603	0160-5944	1	CAP-FXD 0.047uF +-10% 50 V CER X7R	28480	0160-5944
C604	0160-5944	1	CAP-FXD 0.047uF +-10% 50 V CER X7R	28480	0160-5944
C605	0160-7333	1	CAP-FXD 0.068uF +-10% 50 V CER X7R	28480	0160-7333
C606	0160-7333	1	CAP-FXD 0.068uF +-10% 50 V CER X7R	28480	0160-7333
C607	0160-5944	1	CAP-FXD 0.047uF +-10% 50 V CER X7R	28480	0160-5944
C608	0160-5944	1	CAP-FXD 0.047uF +-10% 50 V CER X7R	28480	0160-5944
C609	0160-7333	1	CAP-FXD 0.068uF +-10% 50 V CER X7R	28480	0160-7333
C610	0160-7333	1	CAP-FXD 0.068uF +-10% 50 V CER X7R	28480	0160-7333
C611	0160-5944	1	CAP-FXD 0.047uF +-10% 50 V CER X7R	28480	0160-5944
C612	0160-5944	1	CAP-FXD 0.047uF +-10% 50 V CER X7R	28480	0160-5944
C613	0160-6107	1	CAP-FXD 3900pF +5% 50 V CER C0G	28480	0160-6107
C614	0180-3751	1	CAP-FXD 1uF +20% 35 V TA	28480	0180-3751
C615	0180-3751	1	CAP-FXD 1uF +20% 35 V TA	28480	0180-3751
C616	0160-5944	1	CAP-FXD 0.047uF +-10% 50 V CER X7R	28480	0160-5944
C617	0160-5944	1	CAP-FXD 0.047uF +-10% 50 V CER X7R	28480	0160-5944
C618	0160-5944	1	CAP-FXD 0.047uF +-10% 50 V CER X7R	28480	0160-5944
C619	0160-5944	1	CAP-FXD 0.047uF +-10% 50 V CER X7R	28480	0160-5944
C620	0160-5944	1	CAP-FXD 0.047uF +-10% 50 V CER X7R	28480	0160-5944
C621	0160-5944	1	CAP-FXD 0.047uF +-10% 50 V CER X7R	28480	0160-5944
C622	0160-5944	1	CAP-FXD 0.047uF +-10% 50 V CER X7R	28480	0160-5944

**HP Part Number 08713-60009
Receiver 75 Ohms (8713B/14B) (continued)**

Reference Designator	HP Part Number	Qty	Description	Mfr Code	Mfr Part Number
C623	0160-7856	1	CAP-FXD 330pF +-10% 50 V CER X7R	28480	0160-7856
C624	0160-7856	1	CAP-FXD 330pF +-10% 50 V CER X7R	28480	0160-7856
C625	0180-3751	1	CAP-FXD 1uF +-20% 35 V TA	28480	0180-3751
C626	0180-3751	1	CAP-FXD 1uF +-20% 35 V TA	28480	0180-3751
C628	0160-7751	1	CAP-FXD 0.01uF +-10% 50 V CER X7R	28480	0160-7751
C629	0160-7751	1	CAP-FXD 0.01uF +-10% 50 V CER X7R	28480	0160-7751
C630	0160-7751	1	CAP-FXD 0.01uF +-10% 50 V CER X7R	28480	0160-7751
C631	0160-7751	1	CAP-FXD 0.01uF +-10% 50 V CER X7R	28480	0160-7751
C634	0160-7809	1	CAP-FXD 0.015uF +-10% 50 V CER X7R	28480	0160-7809
C635	0160-7856	1	CAP-FXD 330pF +-10% 50 V CER X7R	28480	0160-7856
C637	0160-7856	1	CAP-FXD 330pF +-10% 50 V CER X7R	28480	0160-7856
C638	0160-7809	1	CAP-FXD 0.015uF +-10% 50 V CER X7R	28480	0160-7809
C639	0160-5944	1	CAP-FXD 0.047uF +-10% 50 V CER X7R	28480	0160-5944
C640	0160-5944	1	CAP-FXD 0.047uF +-10% 50 V CER X7R	28480	0160-5944
C641	0160-6107	1	CAP-FXD 3900pF +-5% 50 V CER C0G	28480	0160-6107
C642	0160-6107	1	CAP-FXD 3900pF +-5% 50 V CER C0G	28480	0160-6107
C643	0160-6099	1	CAP-FXD 820pF +-5% 50 V CER C0G	28480	0160-6099
C644	0160-6107	1	CAP-FXD 3900pF +-5% 50 V CER C0G	28480	0160-6107
C645	0160-7751	1	CAP-FXD 0.01uF +-10% 50 V CER X7R	28480	0160-7751
C646	0160-5944	1	CAP-FXD 0.047uF +-10% 50 V CER X7R	28480	0160-5944
C650	0160-7856	1	CAP-FXD 330pF +-10% 50 V CER X7R	28480	0160-7856
C651	0160-7856	1	CAP-FXD 330pF +-10% 50 V CER X7R	28480	0160-7856
C652	0160-5944	1	CAP-FXD 0.047uF +-10% 50 V CER X7R	28480	0160-5944
C654	0160-6107	1	CAP-FXD 3900pF +-5% 50 V CER C0G	28480	0160-6107
C655	0160-5944	1	CAP-FXD 0.047uF +-10% 50 V CER X7R	28480	0160-5944
C656	0160-6107	1	CAP-FXD 3900pF +-5% 50 V CER C0G	28480	0160-6107
C657	0160-6107	1	CAP-FXD 3900pF +-5% 50 V CER C0G	28480	0160-6107
C659	0160-7856	1	CAP-FXD 330pF +-10% 50 V CER X7R	28480	0160-7856
C660	0160-7856	1	CAP-FXD 330pF +-10% 50 V CER X7R	28480	0160-7856
C661	0160-7856	1	CAP-FXD 330pF +-10% 50 V CER X7R	28480	0160-7856
C662	0160-7856	1	CAP-FXD 330pF +-10% 50 V CER X7R	28480	0160-7856
C663	0160-7751	1	CAP-FXD 0.01uF +-10% 50 V CER X7R	28480	0160-7751
C664	0160-7751	1	CAP-FXD 0.01uF +-10% 50 V CER X7R	28480	0160-7751
C665	0160-7751	1	CAP-FXD 0.01uF +-10% 50 V CER X7R	28480	0160-7751
C666	0160-7751	1	CAP-FXD 0.01uF +-10% 50 V CER X7R	28480	0160-7751

HP Part Number 08713-60009
Receiver 75 Ohms (8713B/14B) (continued)

Reference Designator	HP Part Number	Qty	Description	Mfr Code	Mfr Part Number
C667	0160-7856	1	CAP-FXD 330pF +-10% 50 V CER X7R	28480	0160-7856
C668	0160-7809	1	CAP-FXD 0.015uF +-10% 50 V CER X7R	28480	0160-7809
C669	0180-3751	1	CAP-FXD 1uF +-20% 35 V TA	28480	0180-3751
C670	0160-7856	1	CAP-FXD 330pF +-10% 50 V CER X7R	28480	0160-7856
C671	0160-5944	1	CAP-FXD 0.047uF +-10% 50 V CER X7R	28480	0160-5944
C672	0180-3751	1	CAP-FXD 1uF +-20% 35 V TA	28480	0180-3751
C673	0160-7867	1	CAP-FXD 6.8pF +-3.68% 50 V CER C0G	28480	0160-7867
C674	0180-3705	1	CAP-FXD 47uF +-20% 50 V AL-ELCTLT	28480	0180-3705
C675	0180-3705	1	CAP-FXD 47uF +-20% 50 V AL-ELCTLT	28480	0180-3705
C676	0160-6741	1	CAP-FXD 0.01uF +-2% 50 V CER C0G	28480	0160-6741
CR1	1900-0100	1	DIODE-PIN	28480	1900-0100
CR2	1900-0100	1	DIODE-PIN	28480	1900-0100
CR3	1900-0100	1	DIODE-PIN	28480	1900-0100
CR5	1901-1227	1	DIODE-SWITCHING 75V 200MA 6NS TO-236	28480	1901-1227
CR6	1901-1227	1	DIODE-SWITCHING 75V 200MA 6NS TO-236	28480	1901-1227
CR7	1901-1227	1	DIODE-SWITCHING 75V 200MA 6NS TO-236	28480	1901-1227
CR8	1901-1227	1	DIODE-SWITCHING 75V 200MA 6NS TO-236	28480	1901-1227
CR9	1901-1227	1	DIODE-SWITCHING 75V 200MA 6NS TO-236	28480	1901-1227
CR10	1901-1227	1	DIODE-SWITCHING 75V 200MA 6NS TO-236	28480	1901-1227
CR11	1901-1227	1	DIODE-SWITCHING 75V 200MA 6NS TO-236	28480	1901-1227
CR12	1901-1227	1	DIODE-SWITCHING 75V 200MA 6NS TO-236	28480	1901-1227
CR13	1901-1227	1	DIODE-SWITCHING 75V 200MA 6NS TO-236	28480	1901-1227
CR14	1901-1227	1	DIODE-SWITCHING 75V 200MA 6NS TO-236	28480	1901-1227
CR15	1901-1227	1	DIODE-SWITCHING 75V 200MA 6NS TO-236	28480	1901-1227
CR16	1901-1227	1	DIODE-SWITCHING 75V 200MA 6NS TO-236	28480	1901-1227
CR17	1901-1227	1	DIODE-SWITCHING 75V 200MA 6NS TO-236	28480	1901-1227
CR18	1901-1227	1	DIODE-SWITCHING 75V 200MA 6NS TO-236	28480	1901-1227
CR19	1906-0375	1	DIODE-ARRAY 50V 400MA	28480	1906-0375
CR20	1901-1227	1	DIODE-SWITCHING 75V 200MA 6NS TO-236	28480	1901-1227
CR21	1901-1227	1	DIODE-SWITCHING 75V 200MA 6NS TO-236	28480	1901-1227
CR22	1901-1227	1	DIODE-SWITCHING 75V 200MA 6NS TO-236	28480	1901-1227
CR23	1901-1227	1	DIODE-SWITCHING 75V 200MA 6NS TO-236	28480	1901-1227
CR24	1901-1227	1	DIODE-SWITCHING 75V 200MA 6NS TO-236	28480	1901-1227
CR25	1901-1227	1	DIODE-SWITCHING 75V 200MA 6NS TO-236	28480	1901-1227
CR26	1901-1227	1	DIODE-SWITCHING 75V 200MA 6NS TO-236	28480	1901-1227

**HP Part Number 08713-60009
Receiver 75 Ohms (8713B/14B) (continued)**

Reference Designator	HP Part Number	Qty	Description	Mfr Code	Mfr Part Number
CR27	1901-1227	1	DIODE-SWITCHING 75V 200MA 6NS TO-236	28480	1901-1227
CR28	1901-1227	1	DIODE-SWITCHING 75V 200MA 6NS TO-236	28480	1901-1227
CR29	1901-1227	1	DIODE-SWITCHING 75V 200MA 6NS TO-236	28480	1901-1227
CR30	1901-1227	1	DIODE-SWITCHING 75V 200MA 6NS TO-236	28480	1901-1227
CR31	1901-1227	1	DIODE-SWITCHING 75V 200MA 6NS TO-236	28480	1901-1227
CR32	1901-1227	1	DIODE-SWITCHING 75V 200MA 6NS TO-236	28480	1901-1227
CR34	1900-0074	1	DIODE-SCHOTTKY SM SIG	28480	1900-0074
CR35	1900-0074	1	DIODE-SCHOTTKY SM SIG	28480	1900-0074
CR40	1900-0293	1	DIODE-SCHOTTKY SM SIG	28480	1900-0293
CR41	1900-0293	1	DIODE-SCHOTTKY SM SIG	28480	1900-0293
CR45	1900-0273	1	DIODE-PIN	28480	1900-0273
CR46	1900-0273	1	DIODE-PIN	28480	1900-0273
CR47	1900-0273	1	DIODE-PIN	28480	1900-0273
CR48	1900-0273	1	DIODE-PIN	28480	1900-0273
CR50	1900-0299	1	DIODE-PIN	28480	1900-0299
CR51	1900-0299	1	DIODE-PIN	28480	1900-0299
CR52	1900-0307	1	DIODE-SCHOTTKY SM SIG	28480	1900-0307
CR53	1900-0293	1	DIODE-SCHOTTKY SM SIG	28480	1900-0293
CR54	1900-0293	1	DIODE-SCHOTTKY SM SIG	28480	1900-0293
E1	9170-1421	1	CORE-SHIELDING BEAD	28480	9170-1421
E2	9170-1421	1	CORE-SHIELDING BEAD	28480	9170-1421
E3	9170-1421	1	CORE-SHIELDING BEAD	28480	9170-1421
E5	9170-1421	1	CORE-SHIELDING BEAD	28480	9170-1421
E6	9170-1421	1	CORE-SHIELDING BEAD	28480	9170-1421
E7	9170-1421	1	CORE-SHIELDING BEAD	28480	9170-1421
E8	9170-1421	1	CORE-SHIELDING BEAD	28480	9170-1421
E10	9170-1421	1	CORE-SHIELDING BEAD	28480	9170-1421
E11	9170-1421	1	CORE-SHIELDING BEAD	28480	9170-1421
E12	9170-1421	1	CORE-SHIELDING BEAD	28480	9170-1421
E13	9170-1421	1	CORE-SHIELDING BEAD	28480	9170-1421
E16	9170-1421	1	CORE-SHIELDING BEAD	28480	9170-1421
E17	9170-1584	1	CORE-SHIELDING BEAD	28480	9170-1584
E20	9170-1421	1	CORE-SHIELDING BEAD	28480	9170-1421
E21	9170-1421	1	CORE-SHIELDING BEAD	28480	9170-1421
E24	9170-1421	1	CORE-SHIELDING BEAD	28480	9170-1421

**Indicates factory-selected value*

HP Part Number 08713-60009
Receiver 75 Ohms (8713B/14B) (continued)

Reference Designator	HP Part Number	Qty	Description	Mfr Code	Mfr Part Number
E50	9170-1421	1	CORE-SHIELDING BEAD	28480	9170-1421
E51	9170-1421	1	CORE-SHIELDING BEAD	28480	9170-1421
E52	9170-1421	1	CORE-SHIELDING BEAD	28480	9170-1421
E54	9170-1421	1	CORE-SHIELDING BEAD	28480	9170-1421
E57	9170-1421	1	CORE-SHIELDING BEAD	28480	9170-1421
E100	9170-1421	1	CORE-SHIELDING BEAD	28480	9170-1421
E101	9170-1421	1	CORE-SHIELDING BEAD	28480	9170-1421
E102	9170-1421	1	CORE-SHIELDING BEAD	28480	9170-1421
E103	9170-1421	1	CORE-SHIELDING BEAD	28480	9170-1421
E104	9170-1421	1	CORE-SHIELDING BEAD	28480	9170-1421
E107	9170-1421	1	CORE-SHIELDING BEAD	28480	9170-1421
E304	9170-1421	1	CORE-SHIELDING BEAD	28480	9170-1421
E305	9170-1421	1	CORE-SHIELDING BEAD	28480	9170-1421
E306	9170-1421	1	CORE-SHIELDING BEAD	28480	9170-1421
E307	9170-1421	1	CORE-SHIELDING BEAD	28480	9170-1421
E308	9170-1421	1	CORE-SHIELDING BEAD	28480	9170-1421
E309	9170-1421	1	CORE-SHIELDING BEAD	28480	9170-1421
E500	9170-1421	1	CORE-SHIELDING BEAD	28480	9170-1421
E501	9170-1421	1	CORE-SHIELDING BEAD	28480	9170-1421
E502	9170-1584	1	CORE-SHIELDING BEAD	28480	9170-1584
E504	9170-1584	1	CORE-SHIELDING BEAD	28480	9170-1584
E505	9170-1584	1	CORE-SHIELDING BEAD	28480	9170-1584
E506	9170-1584	1	CORE-SHIELDING BEAD	28480	9170-1584
E507	9170-1584	1	CORE-SHIELDING BEAD	28480	9170-1584
E508	9170-1421	1	CORE-SHIELDING BEAD	28480	9170-1421
E510	9170-1421	1	CORE-SHIELDING BEAD	28480	9170-1421
E511	9170-1421	1	CORE-SHIELDING BEAD	28480	9170-1421
E512	9170-1421	1	CORE-SHIELDING BEAD	28480	9170-1421
E514	9170-1584	1	CORE-SHIELDING BEAD	28480	9170-1584
E515	9170-1584	1	CORE-SHIELDING BEAD	28480	9170-1584
E516	9170-1584	1	CORE-SHIELDING BEAD	28480	9170-1584
E517	9170-1584	1	CORE-SHIELDING BEAD	28480	9170-1584
E518	9170-1584	1	CORE-SHIELDING BEAD	28480	9170-1584
E520	9170-1421	1	CORE-SHIELDING BEAD	28480	9170-1421
E521	9170-1421	1	CORE-SHIELDING BEAD	28480	9170-1421

**HP Part Number 08713-60009
Receiver 75 Ohms (8713B/14B) (continued)**

Reference Designator	HP Part Number	Qty	Description	Mfr Code	Mfr Part Number
E522	9170-1421	1	CORE-SHIELDING BEAD	28480	9170-1421
E523	9170-1421	1	CORE-SHIELDING BEAD	28480	9170-1421
E524	9170-1584	1	CORE-SHIELDING BEAD	28480	9170-1584
E526	9170-1584	1	CORE-SHIELDING BEAD	28480	9170-1584
E527	9170-1584	1	CORE-SHIELDING BEAD	28480	9170-1584
E528	9170-1584	1	CORE-SHIELDING BEAD	28480	9170-1584
E529	9170-1584	1	CORE-SHIELDING BEAD	28480	9170-1584
E532	9170-1421	1	CORE-SHIELDING BEAD	28480	9170-1421
FL1	9135-0461	1	FILTER-SUPPRESSION EMI; SMT; WORKING	09939	NFM61R10T102
J1	1250-2501	1	CONNECTOR-TEL JACK-PHONE	01380	94-3310-002
J2	1250-1604	1	CONNECTOR-RF SMA RCPT PC-W/O-STDF 50-OHM	28480	1250-1604
J3	1250-1604	1	CONNECTOR-RF SMA RCPT PC-W/O-STDF 50-OHM	28480	1250-1604
J4	1250-1604	1	CONNECTOR-RF SMA RCPT PC-W/O-STDF 50-OHM	28480	1250-1604
J5	1252-3332	1	CONN-POST TYPE .100-PIN-SPCG-MTG-END	28480	1252-3332
J6	1252-3332	1	CONN-POST TYPE .100-PIN-SPCG-MTG-END	28480	1252-3332
J13	1251-8248	1	CONN-POST TYPE .100-PIN-SPCG-MTG-END	28480	1251-8248
J14	1251-7854	1	CONN-POST TYPE .100-PIN-SPCG-MTG-END	28480	1251-7854
J15	1251-7854	1	CONN-POST TYPE .100-PIN-SPCG-MTG-END	28480	1251-7854
J16	1250-1842	1	CONNECTOR-RF BNC RCPT PC-W-STDFS 50-OHM	28480	1250-1842
J17	1251-5033	1	CONN-POST TYPE .100-PIN-SPCG-MTG-END	28480	1251-5033
L3	9100-3922	1	INDUCTOR-FIXED Z > 1200 OHMS 120 TO 650	28480	9100-3922
L4	9100-3922	1	INDUCTOR-FIXED Z > 1200 OHMS 120 TO 650	28480	9100-3922
L6	9140-1121	1	INDUCTOR 100uH +-5% 3.4W-mmX4.8LG-mm	28480	9140-1121
L7	9140-1119	1	INDUCTOR 68uH +-5% 3.4W-mmX4.8LG-mm Q=50	28480	9140-1119
L8	9140-1117	1	INDUCTOR 47uH +-5% 3.4W-mmX4.8LG-mm Q=50	28480	9140-1117
L9	9140-1117	1	INDUCTOR 47uH +-5% 3.4W-mmX4.8LG-mm Q=50	28480	9140-1117
L12	9100-3922	1	INDUCTOR-FIXED Z > 1200 OHMS 120 TO 650	28480	9100-3922
L13	9100-3922	1	INDUCTOR-FIXED Z > 1200 OHMS 120 TO 650	28480	9100-3922
L15	9140-1121	1	INDUCTOR 100uH +-5% 3.4W-mmX4.8LG-mm	28480	9140-1121
L16	9140-1119	1	INDUCTOR 68uH +-5% 3.4W-mmX4.8LG-mm Q=50	28480	9140-1119
L22	9100-3922	1	INDUCTOR-FIXED Z > 1200 OHMS 120 TO 650	28480	9100-3922
L23	9100-3922	1	INDUCTOR-FIXED Z > 1200 OHMS 120 TO 650	28480	9100-3922
L25	9140-1121	1	INDUCTOR 100uH +-5% 3.4W-mmX4.8LG-mm	28480	9140-1121
L26	9140-1119	1	INDUCTOR 68uH +-5% 3.4W-mmX4.8LG-mm Q=50	28480	9140-1119
L27	9100-1665	1	INDUCTOR RF-CH-MLD 3.3mH +-5%	28480	9100-1665

**Indicates factory-selected value*

HP Part Number 08713-60009
Receiver 75 Ohms (8713B/14B) (continued)

Reference Designator	HP Part Number	Qty	Description	Mfr Code	Mfr Part Number
MP3	08713-20033	1	SHIELD-TOP RECVR	28480	08713-20033
MP4	08713-20035	1	GASKET-TOP RECVR	28480	08713-20035
MP5	08713-20034	1	SHIELD-LWR RECVR	28480	08713-20034
MP6	08713-20036	1	GASKET-LWR RECVR	28480	08713-20036
MP7	0515-0664	1	SCREW-MACHINE ASSEMBLY M3 X 0.5 12MM-LG	05610	
MP8	0515-0664	1	SCREW-MACHINE ASSEMBLY M3 X 0.5 12MM-LG	05610	
MP9	0515-0664	1	SCREW-MACHINE ASSEMBLY M3 X 0.5 12MM-LG	05610	
MP10	0515-0664	1	SCREW-MACHINE ASSEMBLY M3 X 0.5 12MM-LG	05610	
MP11	0515-0664	1	SCREW-MACHINE ASSEMBLY M3 X 0.5 12MM-LG	05610	
MP12	0515-0664	1	SCREW-MACHINE ASSEMBLY M3 X 0.5 12MM-LG	05610	
MP13	0515-0664	1	SCREW-MACHINE ASSEMBLY M3 X 0.5 12MM-LG	05610	
MP14	0515-0664	1	SCREW-MACHINE ASSEMBLY M3 X 0.5 12MM-LG	05610	
MP15	0515-0664	1	SCREW-MACHINE ASSEMBLY M3 X 0.5 12MM-LG	05610	
MP16	0515-0664	1	SCREW-MACHINE ASSEMBLY M3 X 0.5 12MM-LG	05610	
MP17	0515-0664	1	SCREW-MACHINE ASSEMBLY M3 X 0.5 12MM-LG	05610	
MP18	0515-0664	1	SCREW-MACHINE ASSEMBLY M3 X 0.5 12MM-LG	05610	
MP19	0515-0664	1	SCREW-MACHINE ASSEMBLY M3 X 0.5 12MM-LG	05610	
MP20	0515-0664	1	SCREW-MACHINE ASSEMBLY M3 X 0.5 12MM-LG	05610	
MP21	0515-0664	1	SCREW-MACHINE ASSEMBLY M3 X 0.5 12MM-LG	05610	
MP22	0515-0664	1	SCREW-MACHINE ASSEMBLY M3 X 0.5 12MM-LG	05610	
MP23	0515-0664	1	SCREW-MACHINE ASSEMBLY M3 X 0.5 12MM-LG	05610	
MP24	0515-0664	1	SCREW-MACHINE ASSEMBLY M3 X 0.5 12MM-LG	05610	
MP25	0515-0664	1	SCREW-MACHINE ASSEMBLY M3 X 0.5 12MM-LG	05610	
MP26	0515-0664	1	SCREW-MACHINE ASSEMBLY M3 X 0.5 12MM-LG	05610	
MP27	0515-0664	1	SCREW-MACHINE ASSEMBLY M3 X 0.5 12MM-LG	05610	
MP28	0515-0664	1	SCREW-MACHINE ASSEMBLY M3 X 0.5 12MM-LG	05610	
MP29	0515-0664	1	SCREW-MACHINE ASSEMBLY M3 X 0.5 12MM-LG	05610	
MP30	0515-0664	1	SCREW-MACHINE ASSEMBLY M3 X 0.5 12MM-LG	05610	
MP31	0515-0664	1	SCREW-MACHINE ASSEMBLY M3 X 0.5 12MM-LG	05610	
MP32	0515-0664	1	SCREW-MACHINE ASSEMBLY M3 X 0.5 12MM-LG	05610	
MP34	1400-1661	1	CLAMP-COMPONENT SST	13522	
MP35	1400-1661	1	CLAMP-COMPONENT SST	13522	
MP36	1400-1661	1	CLAMP-COMPONENT SST	13522	
MP37	0590-1637	1	THREADED INSERT-NUT M2 X 0.4 1.5-MM-LG	03981	KFS2-M2
MP38	0590-1637	1	THREADED INSERT-NUT M2 X 0.4 1.5-MM-LG	03981	KFS2-M2

**HP Part Number 08713-60009
Receiver 75 Ohms (8713B/14B) (continued)**

Reference Designator	HP Part Number	Qty	Description	Mfr Code	Mfr Part Number
MP39	0590-1637	1	THREADED INSERT-NUT M2 X 0.4 1.5-MM-LG	03981	KFS2-M2
MP40	0590-1637	1	THREADED INSERT-NUT M2 X 0.4 1.5-MM-LG	03981	KFS2-M2
MP41	0590-1637	1	THREADED INSERT-NUT M2 X 0.4 1.5-MM-LG	03981	KFS2-M2
MP42	0590-1637	1	THREADED INSERT-NUT M2 X 0.4 1.5-MM-LG	03981	KFS2-M2
MP43	0515-0658	1	SCREW-MACHINE ASSEMBLY M2 X 0.4 6MM-LG	05610	
MP44	0515-0658	1	SCREW-MACHINE ASSEMBLY M2 X 0.4 6MM-LG	05610	
MP45	0515-0658	1	SCREW-MACHINE ASSEMBLY M2 X 0.4 6MM-LG	05610	
MP46	0515-0658	1	SCREW-MACHINE ASSEMBLY M2 X 0.4 6MM-LG	05610	
MP47	0515-0658	1	SCREW-MACHINE ASSEMBLY M2 X 0.4 6MM-LG	05610	
MP48	0515-0658	1	SCREW-MACHINE ASSEMBLY M2 X 0.4 6MM-LG	05610	
MP53	0590-1095	1	THREADED INSERT-NUT M3 X 0.5 1.5-MM-LG	03981	KF2-M3-ZI
MP54	0590-1095	1	THREADED INSERT-NUT M3 X 0.5 1.5-MM-LG	03981	KF2-M3-ZI
MP55	0590-1095	1	THREADED INSERT-NUT M3 X 0.5 1.5-MM-LG	03981	KF2-M3-ZI
MP56	0590-1095	1	THREADED INSERT-NUT M3 X 0.5 1.5-MM-LG	03981	KF2-M3-ZI
MP57	0590-1095	1	THREADED INSERT-NUT M3 X 0.5 1.5-MM-LG	03981	KF2-M3-ZI
MP58	0590-1095	1	THREADED INSERT-NUT M3 X 0.5 1.5-MM-LG	03981	KF2-M3-ZI
MP59	08713-60006	1	SHIELD AY-RECVR	28480	08713-60006
MP60	08711-60021	1	CA AY-DET INPUT	28480	08711-60021
MP61	0515-0430	1	SCREW-MACHINE ASSEMBLY M3 X 0.5 6MM-LG	05610	
MP62	0515-0430	1	SCREW-MACHINE ASSEMBLY M3 X 0.5 6MM-LG	05610	
MP63	0515-0430	1	SCREW-MACHINE ASSEMBLY M3 X 0.5 6MM-LG	05610	
MP64	0515-0430	1	SCREW-MACHINE ASSEMBLY M3 X 0.5 6MM-LG	05610	
MP65	0515-0430	1	SCREW-MACHINE ASSEMBLY M3 X 0.5 6MM-LG	05610	
MP66	0515-0430	1	SCREW-MACHINE ASSEMBLY M3 X 0.5 6MM-LG	05610	
MP67	0515-0430	1	SCREW-MACHINE ASSEMBLY M3 X 0.5 6MM-LG	05610	
MP68	0515-0430	1	SCREW-MACHINE ASSEMBLY M3 X 0.5 6MM-LG	05610	
MP69	0515-0430	1	SCREW-MACHINE ASSEMBLY M3 X 0.5 6MM-LG	05610	
MP70	0515-0430	1	SCREW-MACHINE ASSEMBLY M3 X 0.5 6MM-LG	05610	
MP71	1250-1251	1	ADAPTER-COAX STR F-SMA F-SMA	28480	1250-1251
MP72	1250-1251	1	ADAPTER-COAX STR F-SMA F-SMA	28480	1250-1251
MP73	1400-1439	1	CLAMP-FL-CA .375-WD NYL-6/6	01924	8511-46-00-9909
MP74	08713-20013	1	RF CA-TRAN-B	28480	08713-20013
MP75	08713-20012	1	RF CA-COUP-R	28480	08713-20012
MP76	08713-20019	1	CA AY-RF CPLR IN	28480	08713-20019
MP77	08713-20011	1	RF CA-COUP-A	28480	08713-20011

HP Part Number 08713-60009
Receiver 75 Ohms (8713B/14B) (continued)

Reference Designator	HP Part Number	Qty	Description	Mfr Code	Mfr Part Number
MP78	08713-20010	1	RF CA-LO INPUT	28480	08713-20010
MP79	5086-7937	1	75 OHM COUPLER	28480	5086-7937
MP80	0515-0430	1	SCREW-MACHINE ASSEMBLY M3 X 0.5 6MM-LG	05610	
MP81	0515-0430	1	SCREW-MACHINE ASSEMBLY M3 X 0.5 6MM-LG	05610	
MP82	0515-0430	1	SCREW-MACHINE ASSEMBLY M3 X 0.5 6MM-LG	05610	
MP83	0515-0430	1	SCREW-MACHINE ASSEMBLY M3 X 0.5 6MM-LG	05610	
MP84	0515-0430	1	SCREW-MACHINE ASSEMBLY M3 X 0.5 6MM-LG	05610	
MP85	0515-0430	1	SCREW-MACHINE ASSEMBLY M3 X 0.5 6MM-LG	05610	
P1	1252-2356	1	CONN-POST TYPE 2.54-PIN-SPCG-MTG-END	28480	1252-2356
Q1	1854-1037	1	TRANSISTOR NPN SI TO-236AA PD=350MW	28480	1854-1037
Q2	1854-1037	1	TRANSISTOR NPN SI TO-236AA PD=350MW	28480	1854-1037
Q3	1853-0567	1	TRANSISTOR PNP SI SOT-23 (TO-236AB)	28480	1853-0567
Q4	1853-0567	1	TRANSISTOR PNP SI SOT-23 (TO-236AB)	28480	1853-0567
Q10	1855-0825	1	TRANSISTOR MOSFET N-CHAN E-MODE SI	28480	1855-0825
Q11	1855-0825	1	TRANSISTOR MOSFET N-CHAN E-MODE SI	28480	1855-0825
Q12	1855-0825	1	TRANSISTOR MOSFET N-CHAN E-MODE SI	28480	1855-0825
Q13	1855-0825	1	TRANSISTOR MOSFET N-CHAN E-MODE SI	28480	1855-0825
Q14	1855-0825	1	TRANSISTOR MOSFET N-CHAN E-MODE SI	28480	1855-0825
Q15	1855-0825	1	TRANSISTOR MOSFET N-CHAN E-MODE SI	28480	1855-0825
Q16	1855-0825	1	TRANSISTOR MOSFET N-CHAN E-MODE SI	28480	1855-0825
Q17	1855-0825	1	TRANSISTOR MOSFET N-CHAN E-MODE SI	28480	1855-0825
Q18	1855-0825	1	TRANSISTOR MOSFET N-CHAN E-MODE SI	28480	1855-0825
Q19	1855-0825	1	TRANSISTOR MOSFET N-CHAN E-MODE SI	28480	1855-0825
Q20	1854-1037	1	TRANSISTOR NPN SI TO-236AA PD=350MW	28480	1854-1037
Q21	1854-1037	1	TRANSISTOR NPN SI TO-236AA PD=350MW	28480	1854-1037
Q22	1853-0567	1	TRANSISTOR PNP SI SOT-23 (TO-236AB)	28480	1853-0567
Q23	1853-0567	1	TRANSISTOR PNP SI SOT-23 (TO-236AB)	28480	1853-0567
Q24	1854-1037	1	TRANSISTOR NPN SI TO-236AA PD=350MW	28480	1854-1037
Q30	1855-0935	1	TRANSISTOR GAAS FET N-CHAN D-MODE	28480	1855-0935
Q31	1855-0935	1	TRANSISTOR GAAS FET N-CHAN D-MODE	28480	1855-0935
Q32	1854-1037	1	TRANSISTOR NPN SI TO-236AA PD=350MW	28480	1854-1037
Q33	1854-1037	1	TRANSISTOR NPN SI TO-236AA PD=350MW	28480	1854-1037
Q34	1854-1270	1	TRANSISTOR NPN SI TO-261AA (SOT-223)	28480	1854-1270
Q35	1853-0567	1	TRANSISTOR PNP SI SOT-23 (TO-236AB)	28480	1853-0567
Q36	1853-0567	1	TRANSISTOR PNP SI SOT-23 (TO-236AB)	28480	1853-0567

**HP Part Number 08713-60009
Receiver 75 Ohms (8713B/14B) (continued)**

Reference Designator	HP Part Number	Qty	Description	Mfr Code	Mfr Part Number
Q40	1855-0935	1	TRANSISTOR GAAS FET N-CHAN D-MODE	28480	1855-0935
Q41	1855-0935	1	TRANSISTOR GAAS FET N-CHAN D-MODE	28480	1855-0935
Q42	1854-1270	1	TRANSISTOR NPN SI TO-261AA (SOT-223)	28480	1854-1270
Q43	1854-1037	1	TRANSISTOR NPN SI TO-236AA PD=350MW	28480	1854-1037
Q44	1854-1037	1	TRANSISTOR NPN SI TO-236AA PD=350MW	28480	1854-1037
Q45	1853-0567	1	TRANSISTOR PNP SI SOT-23 (TO-236AB)	28480	1853-0567
Q46	1853-0567	1	TRANSISTOR PNP SI SOT-23 (TO-236AB)	28480	1853-0567
Q50	1855-0935	1	TRANSISTOR GAAS FET N-CHAN D-MODE	28480	1855-0935
Q51	1855-0935	1	TRANSISTOR GAAS FET N-CHAN D-MODE	28480	1855-0935
Q52	1854-1037	1	TRANSISTOR NPN SI TO-236AA PD=350MW	28480	1854-1037
Q53	1854-1037	1	TRANSISTOR NPN SI TO-236AA PD=350MW	28480	1854-1037
Q54	1854-1270	1	TRANSISTOR NPN SI TO-261AA (SOT-223)	28480	1854-1270
Q55	1853-0567	1	TRANSISTOR PNP SI SOT-23 (TO-236AB)	28480	1853-0567
Q56	1853-0567	1	TRANSISTOR PNP SI SOT-23 (TO-236AB)	28480	1853-0567
Q60	1854-1037	1	TRANSISTOR NPN SI TO-236AA PD=350MW	28480	1854-1037
Q61	1854-1037	1	TRANSISTOR NPN SI TO-236AA PD=350MW	28480	1854-1037
Q62	1853-0567	1	TRANSISTOR PNP SI SOT-23 (TO-236AB)	28480	1853-0567
Q63	1853-0567	1	TRANSISTOR PNP SI SOT-23 (TO-236AB)	28480	1853-0567
R14	0699-1383	1	RESISTOR 4.22K +-1% .125W TKF TC=0+-100	28480	0699-1383
R19	0699-1376	1	RESISTOR 2.15K +-1% .125W TKF TC=0+-100	28480	0699-1376
R55	0699-1415	1	RESISTOR 100 +-1% .125W TKF TC=0+-100	28480	0699-1415
R56	0699-1415	1	RESISTOR 100 +-1% .125W TKF TC=0+-100	28480	0699-1415
R57	0699-1390	1	RESISTOR 9.09K +-1% .125W TKF TC=0+-100	28480	0699-1390
R58	0699-1380	1	RESISTOR 3.16K +-1% .125W TKF TC=0+-100	28480	0699-1380
R59	0699-1422	1	RESISTOR 196 +-1% .125W TKF TC=0+-100	28480	0699-1422
R60	0699-1356	1	RESISTOR 31.6 +-1% .125W TKF TC=0+-100	28480	0699-1356
R61	0699-1384	1	RESISTOR 4.64K +-1% .125W TKF TC=0+-100	28480	0699-1384
R62	0699-1391	1	RESISTOR 10K +-1% .125W TKF TC=0+-100	28480	0699-1391
R63	0699-1383	1	RESISTOR 4.22K +-1% .125W TKF TC=0+-100	28480	0699-1383
R64	0699-1376	1	RESISTOR 2.15K +-1% .125W TKF TC=0+-100	28480	0699-1376
R65	0699-1369	1	RESISTOR 1.1K +-1% .125W TKF TC=0+-100	28480	0699-1369
R66	0699-1380	1	RESISTOR 3.16K +-1% .125W TKF TC=0+-100	28480	0699-1380
R67	0699-1391	1	RESISTOR 10K +-1% .125W TKF TC=0+-100	28480	0699-1391
R69	0699-1345	1	RESISTOR 11 +-1% .125W TKF TC=0+-100	28480	0699-1345
R70	0699-1345	1	RESISTOR 11 +-1% .125W TKF TC=0+-100	28480	0699-1345

**Indicates factory-selected value*

**HP Part Number 08713-60009
Receiver 75 Ohms (8713B/14B) (continued)**

Reference Designator	HP Part Number	Qty	Description	Mfr Code	Mfr Part Number
R71	0699-1356	1	RESISTOR 31.6 +-1% .125W TKF TC=0+-100	28480	0699-1356
R72	0699-1384	1	RESISTOR 4.64K +-1% .125W TKF TC=0+-100	28480	0699-1384
R73	0699-1391	1	RESISTOR 10K +-1% .125W TKF TC=0+-100	28480	0699-1391
R74	0699-1434	1	RESISTOR 619 +-1% .125W TKF TC=0+-100	28480	0699-1434
R75	0699-1378	1	RESISTOR 2.61K +-1% .125W TKF TC=0+-100	28480	0699-1378
R76	0699-1378	1	RESISTOR 2.61K +-1% .125W TKF TC=0+-100	28480	0699-1378
R80	0699-1415	1	RESISTOR 100 +-1% .125W TKF TC=0+-100	28480	0699-1415
R81	0699-1415	1	RESISTOR 100 +-1% .125W TKF TC=0+-100	28480	0699-1415
R82	0699-1415	1	RESISTOR 100 +-1% .125W TKF TC=0+-100	28480	0699-1415
R83	0699-1415	1	RESISTOR 100 +-1% .125W TKF TC=0+-100	28480	0699-1415
R84	0699-1390	1	RESISTOR 9.09K +-1% .125W TKF TC=0+-100	28480	0699-1390
R85	0699-1380	1	RESISTOR 3.16K +-1% .125W TKF TC=0+-100	28480	0699-1380
R86	0699-1422	1	RESISTOR 196 +-1% .125W TKF TC=0+-100	28480	0699-1422
R87	0699-1356	1	RESISTOR 31.6 +-1% .125W TKF TC=0+-100	28480	0699-1356
R88	0699-1384	1	RESISTOR 4.64K +-1% .125W TKF TC=0+-100	28480	0699-1384
R89	0699-1391	1	RESISTOR 10K +-1% .125W TKF TC=0+-100	28480	0699-1391
R90	0699-1383	1	RESISTOR 4.22K +-1% .125W TKF TC=0+-100	28480	0699-1383
R91	0699-1376	1	RESISTOR 2.15K +-1% .125W TKF TC=0+-100	28480	0699-1376
R92	0699-1369	1	RESISTOR 1.1K +-1% .125W TKF TC=0+-100	28480	0699-1369
R93	0699-1380	1	RESISTOR 3.16K +-1% .125W TKF TC=0+-100	28480	0699-1380
R94	0699-1391	1	RESISTOR 10K +-1% .125W TKF TC=0+-100	28480	0699-1391
R96	0699-1345	1	RESISTOR 11 +-1% .125W TKF TC=0+-100	28480	0699-1345
R97	0699-1345	1	RESISTOR 11 +-1% .125W TKF TC=0+-100	28480	0699-1345
R98	0699-1356	1	RESISTOR 31.6 +-1% .125W TKF TC=0+-100	28480	0699-1356
R99	0699-1384	1	RESISTOR 4.64K +-1% .125W TKF TC=0+-100	28480	0699-1384
R100	0699-1391	1	RESISTOR 10K +-1% .125W TKF TC=0+-100	28480	0699-1391
R101	0699-1434	1	RESISTOR 619 +-1% .125W TKF TC=0+-100	28480	0699-1434
R104	0699-1415	1	RESISTOR 100 +-1% .125W TKF TC=0+-100	28480	0699-1415
R105	0699-1415	1	RESISTOR 100 +-1% .125W TKF TC=0+-100	28480	0699-1415
R107	0699-1383	1	RESISTOR 4.22K +-1% .125W TKF TC=0+-100	28480	0699-1383
R108	0699-1378	1	RESISTOR 2.61K +-1% .125W TKF TC=0+-100	28480	0699-1378
R109	0699-1378	1	RESISTOR 2.61K +-1% .125W TKF TC=0+-100	28480	0699-1378
R112	0699-1376	1	RESISTOR 2.15K +-1% .125W TKF TC=0+-100	28480	0699-1376
R117	0699-1374	1	RESISTOR 1.78K +-1% .125W TKF TC=0+-100	28480	0699-1374
R118	0699-1378	1	RESISTOR 2.61K +-1% .125W TKF TC=0+-100	28480	0699-1378

HP Part Number 08713-60009
Receiver 75 Ohms (8713B/14B) (continued)

Reference Designator	HP Part Number	Qty	Description	Mfr Code	Mfr Part Number
R119	0699-1435	1	RESISTOR 681 +1% .125W TKF TC=0+-100	28480	0699-1435
R128	0699-1382	1	RESISTOR 3.83K +1% .125W TKF TC=0+-100	28480	0699-1382
R129	0699-1382	1	RESISTOR 3.83K +1% .125W TKF TC=0+-100	28480	0699-1382
R130	0699-1382	1	RESISTOR 3.83K +1% .125W TKF TC=0+-100	28480	0699-1382
R131	0699-1382	1	RESISTOR 3.83K +1% .125W TKF TC=0+-100	28480	0699-1382
R136	0699-1378	1	RESISTOR 2.61K +1% .125W TKF TC=0+-100	28480	0699-1378
R137	0699-1378	1	RESISTOR 2.61K +1% .125W TKF TC=0+-100	28480	0699-1378
R147	0699-1391	1	RESISTOR 10K +-1% .125W TKF TC=0+-100	28480	0699-1391
R148	0699-1391	1	RESISTOR 10K +-1% .125W TKF TC=0+-100	28480	0699-1391
R149	1810-1064	1	NETWORK-RES 16-SMD 10.0K OHM X 15	28480	1810-1064
R150	0699-1785	1	RESISTOR 13.3K +1% .125W TKF TC=0+-100	28480	0699-1785
R151	0699-1318	1	RESISTOR 1K +1% .125W TKF TC=0+-100	28480	0699-1318
R152	1810-1064	1	NETWORK-RES 16-SMD 10.0K OHM X 15	28480	1810-1064
R154	0699-1390	1	RESISTOR 9.09K +1% .125W TKF TC=0+-100	28480	0699-1390
R155	0699-1415	1	RESISTOR 100 +1% .125W TKF TC=0+-100	28480	0699-1415
R157	0699-1320	1	RESISTOR 19.6K +1% .125W TKF TC=0+-100	28480	0699-1320
R158	0699-1320	1	RESISTOR 19.6K +1% .125W TKF TC=0+-100	28480	0699-1320
R180	0699-1385	1	RESISTOR 5.11K +1% .125W TKF TC=0+-100	28480	0699-1385
R182	0699-2847	1	RESISTOR 2K +-0.1% .125W TF TC=0+-25	28480	0699-2847
R183	0699-2847	1	RESISTOR 2K +-0.1% .125W TF TC=0+-25	28480	0699-2847
R184	0699-2847	1	RESISTOR 2K +-0.1% .125W TF TC=0+-25	28480	0699-2847
R185	0699-2847	1	RESISTOR 2K +-0.1% .125W TF TC=0+-25	28480	0699-2847
R186	0699-1329	1	RESISTOR 6.19K +1% .125W TKF TC=0+-100	28480	0699-1329
R187	0699-1329	1	RESISTOR 6.19K +1% .125W TKF TC=0+-100	28480	0699-1329
R188	0699-1329	1	RESISTOR 6.19K +1% .125W TKF TC=0+-100	28480	0699-1329
R189	0699-1329	1	RESISTOR 6.19K +1% .125W TKF TC=0+-100	28480	0699-1329
R190	0699-1385	1	RESISTOR 5.11K +1% .125W TKF TC=0+-100	28480	0699-1385
R203	0699-1380	1	RESISTOR 3.16K +1% .125W TKF TC=0+-100	28480	0699-1380
R204	0699-1444	1	RESISTOR 178K +-1% .125W TKF TC=0+-100	28480	0699-1444
R322	0699-1374	1	RESISTOR 1.78K +1% .125W TKF TC=0+-100	28480	0699-1374
R324	0699-1378	1	RESISTOR 2.61K +1% .125W TKF TC=0+-100	28480	0699-1378
R325	0699-1435	1	RESISTOR 681 +1% .125W TKF TC=0+-100	28480	0699-1435
R338	0699-1374	1	RESISTOR 1.78K +1% .125W TKF TC=0+-100	28480	0699-1374
R340	0699-1378	1	RESISTOR 2.61K +1% .125W TKF TC=0+-100	28480	0699-1378
R341	0699-1435	1	RESISTOR 681 +1% .125W TKF TC=0+-100	28480	0699-1435

**Indicates factory-selected value*

HP Part Number 08713-60009
Receiver 75 Ohms (8713B/14B) (continued)

Reference Designator	HP Part Number	Qty	Description	Mfr Code	Mfr Part Number
R352	0699-1384	1	RESISTOR 4.64K +-1% .125W TKF TC=0+-100	28480	0699-1384
R353	0699-1384	1	RESISTOR 4.64K +-1% .125W TKF TC=0+-100	28480	0699-1384
R354	0699-1384	1	RESISTOR 4.64K +-1% .125W TKF TC=0+-100	28480	0699-1384
R355	0699-1384	1	RESISTOR 4.64K +-1% .125W TKF TC=0+-100	28480	0699-1384
R356	0699-1319	1	RESISTOR 12.1K +-1% .125W TKF TC=0+-100	28480	0699-1319
R357	0699-1319	1	RESISTOR 12.1K +-1% .125W TKF TC=0+-100	28480	0699-1319
R358	0699-1344	1	RESISTOR 10 +-1% .125W TKF TC=0+-100	28480	0699-1344
R474	0699-1345	1	RESISTOR 11 +-1% .125W TKF TC=0+-100	28480	0699-1345
R475	0699-1345	1	RESISTOR 11 +-1% .125W TKF TC=0+-100	28480	0699-1345
R476	0699-1345	1	RESISTOR 11 +-1% .125W TKF TC=0+-100	28480	0699-1345
R477	0699-1345	1	RESISTOR 11 +-1% .125W TKF TC=0+-100	28480	0699-1345
R478	0699-1425	1	RESISTOR 261 +-1% .125W TKF TC=0+-100	28480	0699-1425
R479	0699-1376	1	RESISTOR 2.15K +-1% .125W TKF TC=0+-100	28480	0699-1376
R480	0699-1424	1	RESISTOR 237 +-1% .125W TKF TC=0+-100	28480	0699-1424
R481	0699-1375	1	RESISTOR 1.96K +-1% .125W TKF TC=0+-100	28480	0699-1375
R482	0699-1391	1	RESISTOR 10K +-1% .125W TKF TC=0+-100	28480	0699-1391
R483	0699-1391	1	RESISTOR 10K +-1% .125W TKF TC=0+-100	28480	0699-1391
R484	0699-1414	1	RESISTOR 90.9K +-1% .125W TKF TC=0+-100	28480	0699-1414
R485	0699-1435	1	RESISTOR 681 +-1% .125W TKF TC=0+-100	28480	0699-1435
R486	0699-1435	1	RESISTOR 681 +-1% .125W TKF TC=0+-100	28480	0699-1435
R487	0699-1414	1	RESISTOR 90.9K +-1% .125W TKF TC=0+-100	28480	0699-1414
R488	0699-1435	1	RESISTOR 681 +-1% .125W TKF TC=0+-100	28480	0699-1435
R489	0699-1435	1	RESISTOR 681 +-1% .125W TKF TC=0+-100	28480	0699-1435
R491	0699-1391	1	RESISTOR 10K +-1% .125W TKF TC=0+-100	28480	0699-1391
R492	0699-1372	1	RESISTOR 1.47K +-1% .125W TKF TC=0+-100	28480	0699-1372
R494	0699-1375	1	RESISTOR 1.96K +-1% .125W TKF TC=0+-100	28480	0699-1375
R495	0699-1424	1	RESISTOR 237 +-1% .125W TKF TC=0+-100	28480	0699-1424
R496	0699-1424	1	RESISTOR 237 +-1% .125W TKF TC=0+-100	28480	0699-1424
R497	0699-1375	1	RESISTOR 1.96K +-1% .125W TKF TC=0+-100	28480	0699-1375
R498	0699-1391	1	RESISTOR 10K +-1% .125W TKF TC=0+-100	28480	0699-1391
R499	0699-1385	1	RESISTOR 5.11K +-1% .125W TKF TC=0+-100	28480	0699-1385
R500	0699-1378	1	RESISTOR 2.61K +-1% .125W TKF TC=0+-100	28480	0699-1378
R501	0699-1390	1	RESISTOR 9.09K +-1% .125W TKF TC=0+-100	28480	0699-1390
R502	0699-1415	1	RESISTOR 100 +-1% .125W TKF TC=0+-100	28480	0699-1415
R503	0699-1444	1	RESISTOR 178K +-1% .125W TKF TC=0+-100	28480	0699-1444

**HP Part Number 08713-60009
Receiver 75 Ohms (8713B/14B) (continued)**

Reference Designator	HP Part Number	Qty	Description	Mfr Code	Mfr Part Number
R504	0699-1380	1	RESISTOR 3.16K +-1% .125W TKF TC=0+-100	28480	0699-1380
R507	0699-1330	1	RESISTOR 100K +-1% .125W TKF TC=0+-100	28480	0699-1330
R510	0699-1330	1	RESISTOR 100K +-1% .125W TKF TC=0+-100	28480	0699-1330
R516	0699-1785	1	RESISTOR 13.3K +-1% .125W TKF TC=0+-100	28480	0699-1785
R517	0699-1320	1	RESISTOR 19.6K +-1% .125W TKF TC=0+-100	28480	0699-1320
R518	0699-1320	1	RESISTOR 19.6K +-1% .125W TKF TC=0+-100	28480	0699-1320
R519	0699-1385	1	RESISTOR 5.11K +-1% .125W TKF TC=0+-100	28480	0699-1385
R520	0699-1385	1	RESISTOR 5.11K +-1% .125W TKF TC=0+-100	28480	0699-1385
R521	0699-1385	1	RESISTOR 5.11K +-1% .125W TKF TC=0+-100	28480	0699-1385
R522	0699-1424	1	RESISTOR 237 +-1% .125W TKF TC=0+-100	28480	0699-1424
R523	0699-1375	1	RESISTOR 1.96K +-1% .125W TKF TC=0+-100	28480	0699-1375
R524	0699-1318	1	RESISTOR 1K +-1% .125W TKF TC=0+-100	28480	0699-1318
R525	0699-1318	1	RESISTOR 1K +-1% .125W TKF TC=0+-100	28480	0699-1318
R526	0699-1318	1	RESISTOR 1K +-1% .125W TKF TC=0+-100	28480	0699-1318
R527	0699-1318	1	RESISTOR 1K +-1% .125W TKF TC=0+-100	28480	0699-1318
R528	0699-3964	1	RESISTOR 5.11K +-1% .063W TKF TC=0+-200	28480	0699-3964
R529	0699-3964	1	RESISTOR 5.11K +-1% .063W TKF TC=0+-200	28480	0699-3964
R530	0699-1394	1	RESISTOR 14.7K +-1% .125W TKF TC=0+-100	28480	0699-1394
R531	0699-1394	1	RESISTOR 14.7K +-1% .125W TKF TC=0+-100	28480	0699-1394
R532	0699-1381	1	RESISTOR 3.48K +-1% .125W TKF TC=0+-100	28480	0699-1381
R533	0699-1376	1	RESISTOR 2.15K +-1% .125W TKF TC=0+-100	28480	0699-1376
R534	0699-1400	1	RESISTOR 26.1K +-1% .125W TKF TC=0+-100	28480	0699-1400
R535	0699-1383	1	RESISTOR 4.22K +-1% .125W TKF TC=0+-100	28480	0699-1383
R536	0699-1375	1	RESISTOR 1.96K +-1% .125W TKF TC=0+-100	28480	0699-1375
R539	0699-3903	1	RESISTOR 12.1 +-1% .063W TKF TC=0+-200	28480	0699-3903
R540	0699-3954	1	RESISTOR 1.96K +-1% .063W TKF TC=0+-200	28480	0699-3954
R541	0699-3954	1	RESISTOR 1.96K +-1% .063W TKF TC=0+-200	28480	0699-3954
R544	0699-3924	1	RESISTOR 100 +-1% .063W TKF TC=0+-200	28480	0699-3924
R545	0699-3924	1	RESISTOR 100 +-1% .063W TKF TC=0+-200	28480	0699-3924
R546	0699-1367	1	RESISTOR 90.9 +-1% .125W TKF TC=0+-100	28480	0699-1367
R547	0699-3923	1	RESISTOR 90.9 +-1% .063W TKF TC=0+-200	28480	0699-3923
R548	0699-3922	1	RESISTOR 82.5 +-1% .063W TKF TC=0+-200	28480	0699-3922
R549	0699-1433	1	RESISTOR 562 +-1% .125W TKF TC=0+-100	28480	0699-1433
R550	0699-1433	1	RESISTOR 562 +-1% .125W TKF TC=0+-100	28480	0699-1433
R551	0699-3970	1	RESISTOR 10K +-1% .063W TKF TC=0+-200	28480	0699-3970

**Indicates factory-selected value*

HP Part Number 08713-60009
Receiver 75 Ohms (8713B/14B) (continued)

Reference Designator	HP Part Number	Qty	Description	Mfr Code	Mfr Part Number
R552	0699-3970	1	RESISTOR 10K +-1% .063W TKF TC=0+-200	28480	0699-3970
R553	0699-1376	1	RESISTOR 2.15K +-1% .125W TKF TC=0+-100	28480	0699-1376
R554	0699-1387	1	RESISTOR 6.81K +-1% .125W TKF TC=0+-100	28480	0699-1387
R555	0699-1372	1	RESISTOR 1.47K +-1% .125W TKF TC=0+-100	28480	0699-1372
R556	0699-1372	1	RESISTOR 1.47K +-1% .125W TKF TC=0+-100	28480	0699-1372
R557	0699-1372	1	RESISTOR 1.47K +-1% .125W TKF TC=0+-100	28480	0699-1372
R558	0699-1372	1	RESISTOR 1.47K +-1% .125W TKF TC=0+-100	28480	0699-1372
R559	0699-1422	1	RESISTOR 196 +-1% .125W TKF TC=0+-100	28480	0699-1422
R560	0699-1422	1	RESISTOR 196 +-1% .125W TKF TC=0+-100	28480	0699-1422
R561	0699-1422	1	RESISTOR 196 +-1% .125W TKF TC=0+-100	28480	0699-1422
R562	0699-1422	1	RESISTOR 196 +-1% .125W TKF TC=0+-100	28480	0699-1422
R563	0699-1371	1	RESISTOR 1.33K +-1% .125W TKF TC=0+-100	28480	0699-1371
R564	0699-1430	1	RESISTOR 422 +-1% .125W TKF TC=0+-100	28480	0699-1430
R567	0699-1376	1	RESISTOR 2.15K +-1% .125W TKF TC=0+-100	28480	0699-1376
R568	0699-1415	1	RESISTOR 100 +-1% .125W TKF TC=0+-100	28480	0699-1415
R569	0699-1391	1	RESISTOR 10K +-1% .125W TKF TC=0+-100	28480	0699-1391
R570	0699-1904	1	RESISTOR 1.62K +-1% .125W TKF TC=0+-100	28480	0699-1904
R571	0699-1904	1	RESISTOR 1.62K +-1% .125W TKF TC=0+-100	28480	0699-1904
R572	0699-1380	1	RESISTOR 3.16K +-1% .125W TKF TC=0+-100	28480	0699-1380
R573	0699-1385	1	RESISTOR 5.11K +-1% .125W TKF TC=0+-100	28480	0699-1385
R574	0699-1365	1	RESISTOR 75 +-1% .125W TKF TC=0+-100	28480	0699-1365
R577	0699-3943	1	RESISTOR 681 +-1% .063W TKF TC=0+-200	28480	0699-3943
R578	0699-3915	1	RESISTOR 38.3 +-1% .063W TKF TC=0+-200	28480	0699-3915
R579	0699-3919	1	RESISTOR 61.9 +-1% .063W TKF TC=0+-200	28480	0699-3919
R580	0699-1904	1	RESISTOR 1.62K +-1% .125W TKF TC=0+-100	28480	0699-1904
R590	0699-3915	1	RESISTOR 38.3 +-1% .063W TKF TC=0+-200	28480	0699-3915
R591	0699-1351	1	RESISTOR 19.6 +-1% .125W TKF TC=0+-100	28480	0699-1351
R600	0699-1385	1	RESISTOR 5.11K +-1% .125W TKF TC=0+-100	28480	0699-1385
R601	0699-1385	1	RESISTOR 5.11K +-1% .125W TKF TC=0+-100	28480	0699-1385
R602	0699-1391	1	RESISTOR 10K +-1% .125W TKF TC=0+-100	28480	0699-1391
R603	0699-1423	1	RESISTOR 215 +-1% .125W TKF TC=0+-100	28480	0699-1423
R604	0699-1423	1	RESISTOR 215 +-1% .125W TKF TC=0+-100	28480	0699-1423
R606	0699-1423	1	RESISTOR 215 +-1% .125W TKF TC=0+-100	28480	0699-1423
R607	0699-1423	1	RESISTOR 215 +-1% .125W TKF TC=0+-100	28480	0699-1423
R608	0699-1361	1	RESISTOR 51.1 +-1% .125W TKF TC=0+-100	28480	0699-1361

**HP Part Number 08713-60009
Receiver 75 Ohms (8713B/14B) (continued)**

Reference Designator	HP Part Number	Qty	Description	Mfr Code	Mfr Part Number
R609	0699-1419	1	RESISTOR 147 +-1% .125W TKF TC=0+-100	28480	0699-1419
R610	0699-1419	1	RESISTOR 147 +-1% .125W TKF TC=0+-100	28480	0699-1419
R612	0699-1419	1	RESISTOR 147 +-1% .125W TKF TC=0+-100	28480	0699-1419
R613	0699-1419	1	RESISTOR 147 +-1% .125W TKF TC=0+-100	28480	0699-1419
R615	0699-3934	1	RESISTOR 261 +-1% .063W TKF TC=0+-200	28480	0699-3934
R616	0699-1421	1	RESISTOR 178 +-1% .125W TKF TC=0+-100	28480	0699-1421
R617	0699-1421	1	RESISTOR 178 +-1% .125W TKF TC=0+-100	28480	0699-1421
R618	0699-1421	1	RESISTOR 178 +-1% .125W TKF TC=0+-100	28480	0699-1421
R619	0699-1421	1	RESISTOR 178 +-1% .125W TKF TC=0+-100	28480	0699-1421
R620	0699-1421	1	RESISTOR 178 +-1% .125W TKF TC=0+-100	28480	0699-1421
R621	0699-1421	1	RESISTOR 178 +-1% .125W TKF TC=0+-100	28480	0699-1421
R622	0699-1417	1	RESISTOR 121 +-1% .125W TKF TC=0+-100	28480	0699-1417
R623	0699-1417	1	RESISTOR 121 +-1% .125W TKF TC=0+-100	28480	0699-1417
R624	0699-1417	1	RESISTOR 121 +-1% .125W TKF TC=0+-100	28480	0699-1417
R625	0699-1417	1	RESISTOR 121 +-1% .125W TKF TC=0+-100	28480	0699-1417
R626	0699-1417	1	RESISTOR 121 +-1% .125W TKF TC=0+-100	28480	0699-1417
R627	0699-1417	1	RESISTOR 121 +-1% .125W TKF TC=0+-100	28480	0699-1417
R628	0699-3934	1	RESISTOR 261 +-1% .063W TKF TC=0+-200	28480	0699-3934
R629	0699-3902	1	RESISTOR 11 +-1% .063W TKF TC=0+-200	28480	0699-3902
R630	0699-3902	1	RESISTOR 11 +-1% .063W TKF TC=0+-200	28480	0699-3902
R631	0699-3902	1	RESISTOR 11 +-1% .063W TKF TC=0+-200	28480	0699-3902
R632	0699-3902	1	RESISTOR 11 +-1% .063W TKF TC=0+-200	28480	0699-3902
R633	0699-1355	1	RESISTOR 28.7 +-1% .125W TKF TC=0+-100	28480	0699-1355
R634	0699-1415	1	RESISTOR 100 +-1% .125W TKF TC=0+-100	28480	0699-1415
R635	0699-1361	1	RESISTOR 51.1 +-1% .125W TKF TC=0+-100	28480	0699-1361
R637	0699-3937	1	RESISTOR 348 +-1% .063W TKF TC=0+-200	28480	0699-3937
R638	0699-3937	1	RESISTOR 348 +-1% .063W TKF TC=0+-200	28480	0699-3937
R639	0699-2889	1	RESISTOR 4.7 +-5% .125W TKF TC=0+-500	28480	0699-2889
R640	0699-3931	1	RESISTOR 196 +-1% .063W TKF TC=0+-200	28480	0699-3931
R641	0699-2889	1	RESISTOR 4.7 +-5% .125W TKF TC=0+-500	28480	0699-2889
R642	0699-3964	1	RESISTOR 5.11K +-1% .063W TKF TC=0+-200	28480	0699-3964
R643	0699-3964	1	RESISTOR 5.11K +-1% .063W TKF TC=0+-200	28480	0699-3964
R644	0699-3947	1	RESISTOR 1K +-1% .063W TKF TC=0+-200	28480	0699-3947
R645	0699-3947	1	RESISTOR 1K +-1% .063W TKF TC=0+-200	28480	0699-3947
R646	0699-1370	1	RESISTOR 1.21K +-1% .125W TKF TC=0+-100	28480	0699-1370

**Indicates factory-selected value*

HP Part Number 08713-60009
Receiver 75 Ohms (8713B/14B) (continued)

Reference Designator	HP Part Number	Qty	Description	Mfr Code	Mfr Part Number
R647	0699-1318	1	RESISTOR 1K +-1% .125W TKF TC=0+-100	28480	0699-1318
R648	0699-1318	1	RESISTOR 1K +-1% .125W TKF TC=0+-100	28480	0699-1318
R649	0699-1391	1	RESISTOR 10K +-1% .125W TKF TC=0+-100	28480	0699-1391
R650	0699-1391	1	RESISTOR 10K +-1% .125W TKF TC=0+-100	28480	0699-1391
R651	0699-1386	1	RESISTOR 5.62K +-1% .125W TKF TC=0+-100	28480	0699-1386
R652	0699-1318	1	RESISTOR 1K +-1% .125W TKF TC=0+-100	28480	0699-1318
R653	0699-1318	1	RESISTOR 1K +-1% .125W TKF TC=0+-100	28480	0699-1318
R656	0699-3947	1	RESISTOR 1K +-1% .063W TKF TC=0+-200	28480	0699-3947
R657	0699-3947	1	RESISTOR 1K +-1% .063W TKF TC=0+-200	28480	0699-3947
R658	0699-3947	1	RESISTOR 1K +-1% .063W TKF TC=0+-200	28480	0699-3947
R659	0699-3947	1	RESISTOR 1K +-1% .063W TKF TC=0+-200	28480	0699-3947
R660	0699-1385	1	RESISTOR 5.11K +-1% .125W TKF TC=0+-100	28480	0699-1385
R661	0699-1385	1	RESISTOR 5.11K +-1% .125W TKF TC=0+-100	28480	0699-1385
R662	0699-1391	1	RESISTOR 10K +-1% .125W TKF TC=0+-100	28480	0699-1391
R663	0699-1423	1	RESISTOR 215 +-1% .125W TKF TC=0+-100	28480	0699-1423
R664	0699-1423	1	RESISTOR 215 +-1% .125W TKF TC=0+-100	28480	0699-1423
R666	0699-1423	1	RESISTOR 215 +-1% .125W TKF TC=0+-100	28480	0699-1423
R667	0699-1423	1	RESISTOR 215 +-1% .125W TKF TC=0+-100	28480	0699-1423
R669	0699-1419	1	RESISTOR 147 +-1% .125W TKF TC=0+-100	28480	0699-1419
R670	0699-1419	1	RESISTOR 147 +-1% .125W TKF TC=0+-100	28480	0699-1419
R672	0699-1419	1	RESISTOR 147 +-1% .125W TKF TC=0+-100	28480	0699-1419
R673	0699-1419	1	RESISTOR 147 +-1% .125W TKF TC=0+-100	28480	0699-1419
R674	0699-1355	1	RESISTOR 28.7 +-1% .125W TKF TC=0+-100	28480	0699-1355
R675	0699-3934	1	RESISTOR 261 +-1% .063W TKF TC=0+-200	28480	0699-3934
R676	0699-3934	1	RESISTOR 261 +-1% .063W TKF TC=0+-200	28480	0699-3934
R677	0699-1421	1	RESISTOR 178 +-1% .125W TKF TC=0+-100	28480	0699-1421
R678	0699-1421	1	RESISTOR 178 +-1% .125W TKF TC=0+-100	28480	0699-1421
R679	0699-1421	1	RESISTOR 178 +-1% .125W TKF TC=0+-100	28480	0699-1421
R680	0699-1421	1	RESISTOR 178 +-1% .125W TKF TC=0+-100	28480	0699-1421
R681	0699-1421	1	RESISTOR 178 +-1% .125W TKF TC=0+-100	28480	0699-1421
R682	0699-1421	1	RESISTOR 178 +-1% .125W TKF TC=0+-100	28480	0699-1421
R683	0699-1417	1	RESISTOR 121 +-1% .125W TKF TC=0+-100	28480	0699-1417
R684	0699-1417	1	RESISTOR 121 +-1% .125W TKF TC=0+-100	28480	0699-1417
R685	0699-1417	1	RESISTOR 121 +-1% .125W TKF TC=0+-100	28480	0699-1417
R686	0699-1417	1	RESISTOR 121 +-1% .125W TKF TC=0+-100	28480	0699-1417

HP Part Number 08713-60009
Receiver 75 Ohms (8713B/14B) (continued)

Reference Designator	HP Part Number	Qty	Description	Mfr Code	Mfr Part Number
R687	0699-1417	1	RESISTOR 121 +1% .125W TKF TC=0+-100	28480	0699-1417
R688	0699-1417	1	RESISTOR 121 +1% .125W TKF TC=0+-100	28480	0699-1417
R689	0699-3964	1	RESISTOR 5.11K +1% .063W TKF TC=0+-200	28480	0699-3964
R690	0699-3964	1	RESISTOR 5.11K +1% .063W TKF TC=0+-200	28480	0699-3964
R691	0699-3947	1	RESISTOR 1K +1% .063W TKF TC=0+-200	28480	0699-3947
R692	0699-3947	1	RESISTOR 1K +1% .063W TKF TC=0+-200	28480	0699-3947
R693	0699-1370	1	RESISTOR 1.21K +1% .125W TKF TC=0+-100	28480	0699-1370
R694	0699-1318	1	RESISTOR 1K +1% .125W TKF TC=0+-100	28480	0699-1318
R695	0699-1318	1	RESISTOR 1K +1% .125W TKF TC=0+-100	28480	0699-1318
R696	0699-1318	1	RESISTOR 1K +1% .125W TKF TC=0+-100	28480	0699-1318
R697	0699-1318	1	RESISTOR 1K +1% .125W TKF TC=0+-100	28480	0699-1318
R698	0699-3902	1	RESISTOR 11 +1% .063W TKF TC=0+-200	28480	0699-3902
R699	0699-3902	1	RESISTOR 11 +1% .063W TKF TC=0+-200	28480	0699-3902
R700	0699-3902	1	RESISTOR 11 +1% .063W TKF TC=0+-200	28480	0699-3902
R701	0699-3902	1	RESISTOR 11 +1% .063W TKF TC=0+-200	28480	0699-3902
R704	0699-1415	1	RESISTOR 100 +1% .125W TKF TC=0+-100	28480	0699-1415
R705	0699-1361	1	RESISTOR 51.1 +1% .125W TKF TC=0+-100	28480	0699-1361
R707	0699-1386	1	RESISTOR 5.62K +1% .125W TKF TC=0+-100	28480	0699-1386
R708	0699-1391	1	RESISTOR 10K +1% .125W TKF TC=0+-100	28480	0699-1391
R709	0699-1391	1	RESISTOR 10K +1% .125W TKF TC=0+-100	28480	0699-1391
R710	0699-2889	1	RESISTOR 4.7 +5% .125W TKF TC=0+-500	28480	0699-2889
R711	0699-3931	1	RESISTOR 196 +1% .063W TKF TC=0+-200	28480	0699-3931
R712	0699-2889	1	RESISTOR 4.7 +5% .125W TKF TC=0+-500	28480	0699-2889
R713	0699-3937	1	RESISTOR 348 +1% .063W TKF TC=0+-200	28480	0699-3937
R714	0699-3937	1	RESISTOR 348 +1% .063W TKF TC=0+-200	28480	0699-3937
R715	0699-1361	1	RESISTOR 51.1 +1% .125W TKF TC=0+-100	28480	0699-1361
R720	0699-1385	1	RESISTOR 5.11K +1% .125W TKF TC=0+-100	28480	0699-1385
R721	0699-1385	1	RESISTOR 5.11K +1% .125W TKF TC=0+-100	28480	0699-1385
R722	0699-1391	1	RESISTOR 10K +1% .125W TKF TC=0+-100	28480	0699-1391
R723	0699-1423	1	RESISTOR 215 +1% .125W TKF TC=0+-100	28480	0699-1423
R724	0699-1423	1	RESISTOR 215 +1% .125W TKF TC=0+-100	28480	0699-1423
R726	0699-1423	1	RESISTOR 215 +1% .125W TKF TC=0+-100	28480	0699-1423
R727	0699-1423	1	RESISTOR 215 +1% .125W TKF TC=0+-100	28480	0699-1423
R729	0699-1419	1	RESISTOR 147 +1% .125W TKF TC=0+-100	28480	0699-1419
R730	0699-1419	1	RESISTOR 147 +1% .125W TKF TC=0+-100	28480	0699-1419

**Indicates factory-selected value*

HP Part Number 08713-60009
Receiver 75 Ohms (8713B/14B) (continued)

Reference Designator	HP Part Number	Qty	Description	Mfr Code	Mfr Part Number
R732	0699-1419	1	RESISTOR 147 +-1% .125W TKF TC=0+-100	28480	0699-1419
R733	0699-1419	1	RESISTOR 147 +-1% .125W TKF TC=0+-100	28480	0699-1419
R734	0699-1355	1	RESISTOR 28.7 +-1% .125W TKF TC=0+-100	28480	0699-1355
R735	0699-3934	1	RESISTOR 261 +-1% .063W TKF TC=0+-200	28480	0699-3934
R736	0699-3934	1	RESISTOR 261 +-1% .063W TKF TC=0+-200	28480	0699-3934
R737	0699-1421	1	RESISTOR 178 +-1% .125W TKF TC=0+-100	28480	0699-1421
R738	0699-1421	1	RESISTOR 178 +-1% .125W TKF TC=0+-100	28480	0699-1421
R739	0699-1421	1	RESISTOR 178 +-1% .125W TKF TC=0+-100	28480	0699-1421
R740	0699-1421	1	RESISTOR 178 +-1% .125W TKF TC=0+-100	28480	0699-1421
R741	0699-1421	1	RESISTOR 178 +-1% .125W TKF TC=0+-100	28480	0699-1421
R742	0699-1421	1	RESISTOR 178 +-1% .125W TKF TC=0+-100	28480	0699-1421
R743	0699-1415	1	RESISTOR 100 +-1% .125W TKF TC=0+-100	28480	0699-1415
R744	0699-1415	1	RESISTOR 100 +-1% .125W TKF TC=0+-100	28480	0699-1415
R745	0699-1415	1	RESISTOR 100 +-1% .125W TKF TC=0+-100	28480	0699-1415
R746	0699-1415	1	RESISTOR 100 +-1% .125W TKF TC=0+-100	28480	0699-1415
R747	0699-1415	1	RESISTOR 100 +-1% .125W TKF TC=0+-100	28480	0699-1415
R748	0699-1415	1	RESISTOR 100 +-1% .125W TKF TC=0+-100	28480	0699-1415
R749	0699-1318	1	RESISTOR 1K +-1% .125W TKF TC=0+-100	28480	0699-1318
R750	0699-1318	1	RESISTOR 1K +-1% .125W TKF TC=0+-100	28480	0699-1318
R751	0699-3964	1	RESISTOR 5.11K +-1% .063W TKF TC=0+-200	28480	0699-3964
R752	0699-3964	1	RESISTOR 5.11K +-1% .063W TKF TC=0+-200	28480	0699-3964
R753	0699-3947	1	RESISTOR 1K +-1% .063W TKF TC=0+-200	28480	0699-3947
R754	0699-3947	1	RESISTOR 1K +-1% .063W TKF TC=0+-200	28480	0699-3947
R755	0699-1370	1	RESISTOR 1.21K +-1% .125W TKF TC=0+-100	28480	0699-1370
R756	0699-1318	1	RESISTOR 1K +-1% .125W TKF TC=0+-100	28480	0699-1318
R757	0699-1318	1	RESISTOR 1K +-1% .125W TKF TC=0+-100	28480	0699-1318
R758	0699-3902	1	RESISTOR 11 +-1% .063W TKF TC=0+-200	28480	0699-3902
R759	0699-3902	1	RESISTOR 11 +-1% .063W TKF TC=0+-200	28480	0699-3902
R760	0699-3902	1	RESISTOR 11 +-1% .063W TKF TC=0+-200	28480	0699-3902
R761	0699-3902	1	RESISTOR 11 +-1% .063W TKF TC=0+-200	28480	0699-3902
R762	0699-3909	1	RESISTOR 21.5 +-1% .063W TKF TC=0+-200	28480	0699-3909
R763	0699-3947	1	RESISTOR 1K +-1% .063W TKF TC=0+-200	28480	0699-3947
R764	0699-1415	1	RESISTOR 100 +-1% .125W TKF TC=0+-100	28480	0699-1415
R765	0699-1361	1	RESISTOR 51.1 +-1% .125W TKF TC=0+-100	28480	0699-1361
R767	0699-1391	1	RESISTOR 10K +-1% .125W TKF TC=0+-100	28480	0699-1391

HP Part Number 08713-60009
Receiver 75 Ohms (8713B/14B) (continued)

Reference Designator	HP Part Number	Qty	Description	Mfr Code	Mfr Part Number
R768	0699-1391	1	RESISTOR 10K +-1% .125W TKF TC=0+-100	28480	0699-1391
R769	0699-3937	1	RESISTOR 348 +-1% .063W TKF TC=0+-200	28480	0699-3937
R770	0699-3937	1	RESISTOR 348 +-1% .063W TKF TC=0+-200	28480	0699-3937
R771	0699-3917	1	RESISTOR 46.4 +-1% .063W TKF TC=0+-200	28480	0699-3917
R772	0699-3910	1	RESISTOR 23.7 +-1% .063W TKF TC=0+-200	28480	0699-3910
R773	0699-3910	1	RESISTOR 23.7 +-1% .063W TKF TC=0+-200	28480	0699-3910
R774	0699-3910	1	RESISTOR 23.7 +-1% .063W TKF TC=0+-200	28480	0699-3910
R775	0699-3936	1	RESISTOR 316 +-1% .063W TKF TC=0+-200	28480	0699-3936
R776	0699-3935	1	RESISTOR 287 +-1% .063W TKF TC=0+-200	28480	0699-3935
R777	0699-1386	1	RESISTOR 5.62K +-1% .125W TKF TC=0+-100	28480	0699-1386
R778	0699-3970	1	RESISTOR 10K +-1% .063W TKF TC=0+-200	28480	0699-3970
R779	0699-3964	1	RESISTOR 5.11K +-1% .063W TKF TC=0+-200	28480	0699-3964
R780	0699-1396	1	RESISTOR 17.8K +-1% .125W TKF TC=0+-100	28480	0699-1396
R781	0699-1320	1	RESISTOR 19.6K +-1% .125W TKF TC=0+-100	28480	0699-1320
R782	0699-1415	1	RESISTOR 100 +-1% .125W TKF TC=0+-100	28480	0699-1415
R783	0699-1415	1	RESISTOR 100 +-1% .125W TKF TC=0+-100	28480	0699-1415
R784	0699-1370	1	RESISTOR 1.21K +-1% .125W TKF TC=0+-100	28480	0699-1370
R785	0699-1427	1	RESISTOR 316 +-1% .125W TKF TC=0+-100	28480	0699-1427
R786	0699-1391	1	RESISTOR 10K +-1% .125W TKF TC=0+-100	28480	0699-1391
R787	0699-3924	1	RESISTOR 100 +-1% .063W TKF TC=0+-200	28480	0699-3924
R788	0699-1361	1	RESISTOR 51.1 +-1% .125W TKF TC=0+-100	28480	0699-1361
R800	0699-3924	1	RESISTOR 100 +-1% .063W TKF TC=0+-200	28480	0699-3924
R801	0699-3924	1	RESISTOR 100 +-1% .063W TKF TC=0+-200	28480	0699-3924
R802	0699-3970	1	RESISTOR 10K +-1% .063W TKF TC=0+-200	28480	0699-3970
R803	0699-3970	1	RESISTOR 10K +-1% .063W TKF TC=0+-200	28480	0699-3970
R804	0699-3954	1	RESISTOR 1.96K +-1% .063W TKF TC=0+-200	28480	0699-3954
R805	0699-3954	1	RESISTOR 1.96K +-1% .063W TKF TC=0+-200	28480	0699-3954
R806	0699-1375	1	RESISTOR 1.96K +-1% .125W TKF TC=0+-100	28480	0699-1375
R807	0699-1375	1	RESISTOR 1.96K +-1% .125W TKF TC=0+-100	28480	0699-1375
R808	0699-1433	1	RESISTOR 562 +-1% .125W TKF TC=0+-100	28480	0699-1433
R809	0699-3919	1	RESISTOR 61.9 +-1% .063W TKF TC=0+-200	28480	0699-3919
R810	0699-3919	1	RESISTOR 61.9 +-1% .063W TKF TC=0+-200	28480	0699-3919
R811	0699-3933	1	RESISTOR 237 +-1% .063W TKF TC=0+-200	28480	0699-3933
R812	0699-1415	1	RESISTOR 100 +-1% .125W TKF TC=0+-100	28480	0699-1415
R813	0699-1415	1	RESISTOR 100 +-1% .125W TKF TC=0+-100	28480	0699-1415

**Indicates factory-selected value*

HP Part Number 08713-60009
Receiver 75 Ohms (8713B/14B) (continued)

Reference Designator	HP Part Number	Qty	Description	Mfr Code	Mfr Part Number
R814	0699-1361	1	RESISTOR 51.1 +-1% .125W TKF TC=0+-100	28480	0699-1361
R815	0699-1361	1	RESISTOR 51.1 +-1% .125W TKF TC=0+-100	28480	0699-1361
R817	0699-1372	1	RESISTOR 1.47K +-1% .125W TKF TC=0+-100	28480	0699-1372
R818	0699-1372	1	RESISTOR 1.47K +-1% .125W TKF TC=0+-100	28480	0699-1372
R819	0699-1372	1	RESISTOR 1.47K +-1% .125W TKF TC=0+-100	28480	0699-1372
R820	0699-1372	1	RESISTOR 1.47K +-1% .125W TKF TC=0+-100	28480	0699-1372
R821	0699-1422	1	RESISTOR 196 +-1% .125W TKF TC=0+-100	28480	0699-1422
R822	0699-1422	1	RESISTOR 196 +-1% .125W TKF TC=0+-100	28480	0699-1422
R823	0699-1422	1	RESISTOR 196 +-1% .125W TKF TC=0+-100	28480	0699-1422
R824	0699-1422	1	RESISTOR 196 +-1% .125W TKF TC=0+-100	28480	0699-1422
R825	0699-3919	1	RESISTOR 61.9 +-1% .063W TKF TC=0+-200	28480	0699-3919
R826	0699-1318	1	RESISTOR 1K +-1% .125W TKF TC=0+-100	28480	0699-1318
R827	0699-3915	1	RESISTOR 38.3 +-1% .063W TKF TC=0+-200	28480	0699-3915
R829	0699-1381	1	RESISTOR 3.48K +-1% .125W TKF TC=0+-100	28480	0699-1381
R830	0699-1376	1	RESISTOR 2.15K +-1% .125W TKF TC=0+-100	28480	0699-1376
R831	0699-1400	1	RESISTOR 26.1K +-1% .125W TKF TC=0+-100	28480	0699-1400
R832	0699-1383	1	RESISTOR 4.22K +-1% .125W TKF TC=0+-100	28480	0699-1383
R833	0699-1375	1	RESISTOR 1.96K +-1% .125W TKF TC=0+-100	28480	0699-1375
R834	0699-1904	1	RESISTOR 1.62K +-1% .125W TKF TC=0+-100	28480	0699-1904
R835	0699-1371	1	RESISTOR 1.33K +-1% .125W TKF TC=0+-100	28480	0699-1371
R836	0699-1430	1	RESISTOR 422 +-1% .125W TKF TC=0+-100	28480	0699-1430
R837	0699-1387	1	RESISTOR 6.81K +-1% .125W TKF TC=0+-100	28480	0699-1387
R838	0699-1380	1	RESISTOR 3.16K +-1% .125W TKF TC=0+-100	28480	0699-1380
R839	0699-1904	1	RESISTOR 1.62K +-1% .125W TKF TC=0+-100	28480	0699-1904
R840	0699-1391	1	RESISTOR 10K +-1% .125W TKF TC=0+-100	28480	0699-1391
R841	0699-1904	1	RESISTOR 1.62K +-1% .125W TKF TC=0+-100	28480	0699-1904
R842	0699-1365	1	RESISTOR 75 +-1% .125W TKF TC=0+-100	28480	0699-1365
R843	0699-1376	1	RESISTOR 2.15K +-1% .125W TKF TC=0+-100	28480	0699-1376
R844	0699-1415	1	RESISTOR 100 +-1% .125W TKF TC=0+-100	28480	0699-1415
R845	0699-1385	1	RESISTOR 5.11K +-1% .125W TKF TC=0+-100	28480	0699-1385
R846	0699-1375	1	RESISTOR 1.96K +-1% .125W TKF TC=0+-100	28480	0699-1375
R847	0699-1383	1	RESISTOR 4.22K +-1% .125W TKF TC=0+-100	28480	0699-1383
R848	0699-1436	1	RESISTOR 750 +-1% .125W TKF TC=0+-100	28480	0699-1436
R849	0699-1385	1	RESISTOR 5.11K +-1% .125W TKF TC=0+-100	28480	0699-1385
R850	0699-3924	1	RESISTOR 100 +-1% .063W TKF TC=0+-200	28480	0699-3924

HP Part Number 08713-60009
Receiver 75 Ohms (8713B/14B) (continued)

Reference Designator	HP Part Number	Qty	Description	Mfr Code	Mfr Part Number
R851	0699-1379	1	RESISTOR 2.87K +-1% .125W TKF TC=0+-100	28480	0699-1379
R852	0699-3924	1	RESISTOR 100 +-1% .063W TKF TC=0+-200	28480	0699-3924
R853	0699-3924	1	RESISTOR 100 +-1% .063W TKF TC=0+-200	28480	0699-3924
R854	0699-1428	1	RESISTOR 348 +-1% .125W TKF TC=0+-100	28480	0699-1428
R855	0699-1428	1	RESISTOR 348 +-1% .125W TKF TC=0+-100	28480	0699-1428
R856	0699-1375	1	RESISTOR 1.96K +-1% .125W TKF TC=0+-100	28480	0699-1375
R857	0699-1375	1	RESISTOR 1.96K +-1% .125W TKF TC=0+-100	28480	0699-1375
R858	0699-1372	1	RESISTOR 1.47K +-1% .125W TKF TC=0+-100	28480	0699-1372
R859	0699-1372	1	RESISTOR 1.47K +-1% .125W TKF TC=0+-100	28480	0699-1372
R860	0699-1372	1	RESISTOR 1.47K +-1% .125W TKF TC=0+-100	28480	0699-1372
R861	0699-1372	1	RESISTOR 1.47K +-1% .125W TKF TC=0+-100	28480	0699-1372
R862	0699-1422	1	RESISTOR 196 +-1% .125W TKF TC=0+-100	28480	0699-1422
R863	0699-1422	1	RESISTOR 196 +-1% .125W TKF TC=0+-100	28480	0699-1422
R864	0699-1422	1	RESISTOR 196 +-1% .125W TKF TC=0+-100	28480	0699-1422
R865	0699-1422	1	RESISTOR 196 +-1% .125W TKF TC=0+-100	28480	0699-1422
R866	0699-3919	1	RESISTOR 61.9 +-1% .063W TKF TC=0+-200	28480	0699-3919
R867	0699-3943	1	RESISTOR 681 +-1% .063W TKF TC=0+-200	28480	0699-3943
R868	0699-3915	1	RESISTOR 38.3 +-1% .063W TKF TC=0+-200	28480	0699-3915
R869	0699-1371	1	RESISTOR 1.33K +-1% .125W TKF TC=0+-100	28480	0699-1371
R870	0699-1387	1	RESISTOR 6.81K +-1% .125W TKF TC=0+-100	28480	0699-1387
R871	0699-1904	1	RESISTOR 1.62K +-1% .125W TKF TC=0+-100	28480	0699-1904
R872	0699-1380	1	RESISTOR 3.16K +-1% .125W TKF TC=0+-100	28480	0699-1380
R873	0699-1904	1	RESISTOR 1.62K +-1% .125W TKF TC=0+-100	28480	0699-1904
R874	0699-1391	1	RESISTOR 10K +-1% .125W TKF TC=0+-100	28480	0699-1391
R875	0699-1371	1	RESISTOR 1.33K +-1% .125W TKF TC=0+-100	28480	0699-1371
R877	0699-1427	1	RESISTOR 316 +-1% .125W TKF TC=0+-100	28480	0699-1427
R878	0699-1415	1	RESISTOR 100 +-1% .125W TKF TC=0+-100	28480	0699-1415
R879	0699-1376	1	RESISTOR 2.15K +-1% .125W TKF TC=0+-100	28480	0699-1376
R880	0699-3931	1	RESISTOR 196 +-1% .063W TKF TC=0+-200	28480	0699-3931
R881	0699-3939	1	RESISTOR 422 +-1% .063W TKF TC=0+-200	28480	0699-3939
R882	0699-1383	1	RESISTOR 4.22K +-1% .125W TKF TC=0+-100	28480	0699-1383
R883	0699-1375	1	RESISTOR 1.96K +-1% .125W TKF TC=0+-100	28480	0699-1375
R884	0699-1415	1	RESISTOR 100 +-1% .125W TKF TC=0+-100	28480	0699-1415
R885	0699-1415	1	RESISTOR 100 +-1% .125W TKF TC=0+-100	28480	0699-1415
R886	0699-1415	1	RESISTOR 100 +-1% .125W TKF TC=0+-100	28480	0699-1415

**Indicates factory-selected value*

HP Part Number 08713-60009
Receiver 75 Ohms (8713B/14B) (continued)

Reference Designator	HP Part Number	Qty	Description	Mfr Code	Mfr Part Number
R887	0699-1415	1	RESISTOR 100 +-1% .125W TKF TC=0+-100	28480	0699-1415
R888	0699-1436	1	RESISTOR 750 +-1% .125W TKF TC=0+-100	28480	0699-1436
R889	0699-1378	1	RESISTOR 2.61K +-1% .125W TKF TC=0+-100	28480	0699-1378
R890	0699-1375	1	RESISTOR 1.96K +-1% .125W TKF TC=0+-100	28480	0699-1375
R891	0699-1383	1	RESISTOR 4.22K +-1% .125W TKF TC=0+-100	28480	0699-1383
R892	0699-1361	1	RESISTOR 51.1 +-1% .125W TKF TC=0+-100	28480	0699-1361
R893	0699-1361	1	RESISTOR 51.1 +-1% .125W TKF TC=0+-100	28480	0699-1361
R894	0699-1436	1	RESISTOR 750 +-1% .125W TKF TC=0+-100	28480	0699-1436
R895	0699-1379	1	RESISTOR 2.87K +-1% .125W TKF TC=0+-100	28480	0699-1379
R896	0699-3915	1	RESISTOR 38.3 +-1% .063W TKF TC=0+-200	28480	0699-3915
R897	0699-1351	1	RESISTOR 19.6 +-1% .125W TKF TC=0+-100	28480	0699-1351
R898	0699-1358	1	RESISTOR 38.3 +-1% .125W TKF TC=0+-100	28480	0699-1358
R899	0699-1351	1	RESISTOR 19.6 +-1% .125W TKF TC=0+-100	28480	0699-1351
R910	0699-1904	1	RESISTOR 1.62K +-1% .125W TKF TC=0+-100	28480	0699-1904
R950	0699-3947	1	RESISTOR 1K +-1% .063W TKF TC=0+-200	28480	0699-3947
TP4	1251-0600	1	CONNECTOR-SGL CONT PIN 1.14-MM-BSC-SZ SQ	01136	928-196-004140
TP6	1251-0600	1	CONNECTOR-SGL CONT PIN 1.14-MM-BSC-SZ SQ	01136	928-196-004140
TP7	1251-0600	1	CONNECTOR-SGL CONT PIN 1.14-MM-BSC-SZ SQ	01136	928-196-004140
TP9	1251-0600	1	CONNECTOR-SGL CONT PIN 1.14-MM-BSC-SZ SQ	01136	928-196-004140
TP10	1251-0600	1	CONNECTOR-SGL CONT PIN 1.14-MM-BSC-SZ SQ	01136	928-196-004140
TP11	1251-0600	1	CONNECTOR-SGL CONT PIN 1.14-MM-BSC-SZ SQ	01136	928-196-004140
TP12	1251-0600	1	CONNECTOR-SGL CONT PIN 1.14-MM-BSC-SZ SQ	01136	928-196-004140
TP13	1251-0600	1	CONNECTOR-SGL CONT PIN 1.14-MM-BSC-SZ SQ	01136	928-196-004140
TP14	1251-0600	1	CONNECTOR-SGL CONT PIN 1.14-MM-BSC-SZ SQ	01136	928-196-004140
TP15	1251-0600	1	CONNECTOR-SGL CONT PIN 1.14-MM-BSC-SZ SQ	01136	928-196-004140
TP16	1251-0600	1	CONNECTOR-SGL CONT PIN 1.14-MM-BSC-SZ SQ	01136	928-196-004140
TP17	1251-0600	1	CONNECTOR-SGL CONT PIN 1.14-MM-BSC-SZ SQ	01136	928-196-004140
TP18	1251-0600	1	CONNECTOR-SGL CONT PIN 1.14-MM-BSC-SZ SQ	01136	928-196-004140
TP19	1251-0600	1	CONNECTOR-SGL CONT PIN 1.14-MM-BSC-SZ SQ	01136	928-196-004140
TP20	1251-0600	1	CONNECTOR-SGL CONT PIN 1.14-MM-BSC-SZ SQ	01136	928-196-004140
U1	1826-2145	1	ANALOG SWITCH 4 SPST 16 -P-SOIC	28480	1826-2145
U2	1826-2167	1	ANALOG MULTIPLEXER 8 CHNL 16 -P-SOIC	28480	1826-2167
U3	1826-2878	1	IC OP AMP PRCN SINGLE 8 PIN PLSTC-SOIC	28480	1826-2878
U4	1826-1925	1	IC OP AMP LOW-NOISE SINGLE 8 PIN	28480	1826-1925
U5	1826-1925	1	IC OP AMP LOW-NOISE SINGLE 8 PIN	28480	1826-1925

**HP Part Number 08713-60009
Receiver 75 Ohms (8713B/14B) (continued)**

Reference Designator	HP Part Number	Qty	Description	Mfr Code	Mfr Part Number
U6	1826-2144	1	IC OP AMP LOW-NOISE SINGLE 8 PIN	28480	1826-2144
U7	1826-1925	1	IC OP AMP LOW-NOISE SINGLE 8 PIN	28480	1826-1925
U8	1826-2878	1	IC OP AMP PRCN SINGLE 8 PIN PLSTC-SOIC	28480	1826-2878
U9	1826-1925	1	IC OP AMP LOW-NOISE SINGLE 8 PIN	28480	1826-1925
U10	1826-1925	1	IC OP AMP LOW-NOISE SINGLE 8 PIN	28480	1826-1925
U11	1826-2144	1	IC OP AMP LOW-NOISE SINGLE 8 PIN	28480	1826-2144
U12	1826-2167	1	ANALOG MULTIPLEXER 8 CHNL 16 -P-SOIC	28480	1826-2167
U13	1826-1925	1	IC OP AMP LOW-NOISE SINGLE 8 PIN	28480	1826-1925
U14	1826-1925	1	IC OP AMP LOW-NOISE SINGLE 8 PIN	28480	1826-1925
U15	1826-1178	1	IC OP AMP HS DIP-C	28480	1826-1178
U16	1826-2987	1	IC OP AMP LOW-NOISE DUAL 8 PIN	28480	1826-2987
U17	1826-2145	1	ANALOG SWITCH 4 SPST 16 -P-SOIC	28480	1826-2145
U18	1826-1546	1	IC OP AMP LOW-NOISE SINGLE 8 PIN	28480	1826-1546
U19	1826-1844	1	IC OP AMP HS 8 PIN DIP-C	28480	1826-1844
U21	1826-2145	1	ANALOG SWITCH 4 SPST 16 -P-SOIC	28480	1826-2145
U22	1826-2145	1	ANALOG SWITCH 4 SPST 16 -P-SOIC	28480	1826-2145
U23	1826-1402	1	IC PWR MGT-V-REG-FXD-POS 4.8/5.2V 8 PINS	28480	1826-1402
U24	1820-4966	1	IC FF CMOS/HC D-TYPE POS-EDGE-TRIG	28480	1820-4966
U25	1820-6128	1	IC CNTR CMOS/HC BIN SYNC/ASYNC	28480	1820-6128
U28	1826-1178	1	IC OP AMP HS DIP-C	28480	1826-1178
U29	1826-2987	1	IC OP AMP LOW-NOISE DUAL 8 PIN	28480	1826-2987
U30	1826-2145	1	ANALOG SWITCH 4 SPST 16 -P-SOIC	28480	1826-2145
U31	1826-1546	1	IC OP AMP LOW-NOISE SINGLE 8 PIN	28480	1826-1546
U32	1826-1844	1	IC OP AMP HS 8 PIN DIP-C	28480	1826-1844
U34	1826-2145	1	ANALOG SWITCH 4 SPST 16 -P-SOIC	28480	1826-2145
U35	1826-2145	1	ANALOG SWITCH 4 SPST 16 -P-SOIC	28480	1826-2145
U36	1826-1402	1	IC PWR MGT-V-REG-FXD-POS 4.8/5.2V 8 PINS	28480	1826-1402
U37	1820-4966	1	IC FF CMOS/HC D-TYPE POS-EDGE-TRIG	28480	1820-4966
U38	1820-6128	1	IC CNTR CMOS/HC BIN SYNC/ASYNC	28480	1820-6128
U41	1826-1178	1	IC OP AMP HS DIP-C	28480	1826-1178
U42	1826-2199	1	IC OP AMP HS SINGLE 8 PIN PLSTC-SOIC	28480	1826-2199
U43	1826-2145	1	ANALOG SWITCH 4 SPST 16 -P-SOIC	28480	1826-2145
U44	1826-1951	1	A/D 16-BIT 28-PLASTIC BPLR	28480	1826-1951
U45	1820-5220	1	IC INV CMOS/HC HEX	28480	1820-5220
U46	1820-4965	1	IC GATE CMOS/HC NAND QUAD 2-INP	28480	1820-4965

**Indicates factory-selected value*

HP Part Number 08713-60009
Receiver 75 Ohms (8713B/14B) (continued)

Reference Designator	HP Part Number	Qty	Description	Mfr Code	Mfr Part Number
U47	1826-1841	1	IC PWR MGT-V-REG-ADJ-NEG 1.2/37V 8 PINS	28480	1826-1841
U48	1826-1826	1	IC PWR MGT-V-REG-ADJ-POS 1.2/37V 8 PINS	28480	1826-1826
U49	1826-1402	1	IC PWR MGT-V-REG-FXD-POS 4.8/5.2V 8 PINS	28480	1826-1402
U50	1826-0122	1	IC PWR MGT-V-REG-FXD-POS 4.8/5.2V TO-220	28480	1826-0122
U51	1826-1826	1	IC PWR MGT-V-REG-ADJ-POS 1.2/37V 8 PINS	28480	1826-1826
U52	1826-1862	1	IC OP AMP LOW-BIAS-H-IMPED DUAL 8 PIN	28480	1826-1862
U53	1826-1899	1	D/A 12-BIT 28-PLCC CMOS	28480	1826-1899
U54	1820-5732	1	IC LCH CMOS/HC D-TYPE OCTL	28480	1820-5732
U55	1826-1862	1	IC OP AMP LOW-BIAS-H-IMPED DUAL 8 PIN	28480	1826-1862
U56	1820-5808	1	IC FF CMOS/HC D-TYPE POS-EDGE-TRIG COM	28480	1820-5808
U58	1820-4215	1	IC DCDR-DEMUXR CMOS/HC BIN 3-TO-8-LINE	28480	1820-4215
U59	1820-5808	1	IC FF CMOS/HC D-TYPE POS-EDGE-TRIG COM	28480	1820-5808
U60	1820-5732	1	IC LCH CMOS/HC D-TYPE OCTL	28480	1820-5732
U61	1820-4215	1	IC DCDR-DEMUXR CMOS/HC BIN 3-TO-8-LINE	28480	1820-4215
U62	1820-5808	1	IC FF CMOS/HC D-TYPE POS-EDGE-TRIG COM	28480	1820-5808
U63	1820-5808	1	IC FF CMOS/HC D-TYPE POS-EDGE-TRIG COM	28480	1820-5808
U64	1820-4966	1	IC FF CMOS/HC D-TYPE POS-EDGE-TRIG	28480	1820-4966
U65	1826-2147	1	ANALOG MULTIPLEXER 8 CHNL 16 -P-SOIC	28480	1826-2147
U66	1820-7230	1	IC CNTR CMOS/HC BIN SYNCHRO	28480	1820-7230
U67	1820-4291	1	IC GATE TTL/ALS NAND QUAD 2-INP	28480	1820-4291
U68	1820-5220	1	IC INV CMOS/HC HEX	28480	1820-5220
U69	1826-2199	1	IC OP AMP HS SINGLE 8 PIN PLSTC-SOIC	28480	1826-2199
U70	1826-2145	1	ANALOG SWITCH 4 SPST 16 -P-SOIC	28480	1826-2145
U71	1826-1951	1	A/D 16-BIT 28-PLASTIC BPLR	28480	1826-1951
U72	1820-5220	1	IC INV CMOS/HC HEX	28480	1820-5220
U73	1820-4965	1	IC GATE CMOS/HC NAND QUAD 2-INP	28480	1820-4965
U74	1826-1841	1	IC PWR MGT-V-REG-ADJ-NEG 1.2/37V 8 PINS	28480	1826-1841
U75	1826-1826	1	IC PWR MGT-V-REG-ADJ-POS 1.2/37V 8 PINS	28480	1826-1826
U76	1826-1402	1	IC PWR MGT-V-REG-FXD-POS 4.8/5.2V 8 PINS	28480	1826-1402
U77	1820-4788	1	IC DRVR TTL/ALS BUS OCTL	28480	1820-4788
U78	1826-1925	1	IC OP AMP LOW-NOISE SINGLE 8 PIN	28480	1826-1925
U79	1826-1925	1	IC OP AMP LOW-NOISE SINGLE 8 PIN	28480	1826-1925
U80	1826-2878	1	IC OP AMP PRCN SINGLE 8 PIN PLSTC-SOIC	28480	1826-2878
U81	1826-1925	1	IC OP AMP LOW-NOISE SINGLE 8 PIN	28480	1826-1925
U82	1826-1925	1	IC OP AMP LOW-NOISE SINGLE 8 PIN	28480	1826-1925

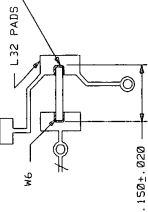
**HP Part Number 08713-6009
Receiver 75 Ohms (8713B/14B) (continued)**

Reference Designator	HP Part Number	Qty	Description	Mfr Code	Mfr Part Number
U83	1826-2144	1	IC OP AMP LOW-NOISE SINGLE 8 PIN	28480	1826-2144
U84	1826-1925	1	IC OP AMP LOW-NOISE SINGLE 8 PIN	28480	1826-1925
U85	1826-2145	1	ANALOG SWITCH 4 SPST 16 -P-SOIC	28480	1826-2145
U86	1826-2167	1	ANALOG MULTIPLEXER 8 CHNL 16 -P-SOIC	28480	1826-2167
U87	1826-1925	1	IC OP AMP LOW-NOISE SINGLE 8 PIN	28480	1826-1925
U90	1826-2175	1	IC RF/IF AMPL SINGLE 4 PIN U-WAVE-PILL	28480	1826-2175
U91	1826-2175	1	IC RF/IF AMPL SINGLE 4 PIN U-WAVE-PILL	28480	1826-2175
U92	1826-2175	1	IC RF/IF AMPL SINGLE 4 PIN U-WAVE-PILL	28480	1826-2175
U93	1826-2175	1	IC RF/IF AMPL SINGLE 4 PIN U-WAVE-PILL	28480	1826-2175
U94	1826-2175	1	IC RF/IF AMPL SINGLE 4 PIN U-WAVE-PILL	28480	1826-2175
U95	1826-2175	1	IC RF/IF AMPL SINGLE 4 PIN U-WAVE-PILL	28480	1826-2175
U96	1826-1862	1	IC OP AMP LOW-BIAS-H-IMPD DUAL 8 PIN	28480	1826-1862
W1	1258-0141	1	JUMPER-REMOVABLE FOR 0.025 IN SQ PINS	01380	530153-2
Z1	0955-0743	1	U-WAVE MIXER 3 GHZ MAX	02739	ROK2500LH-1
Z2	0955-0743	1	U-WAVE MIXER 3 GHZ MAX	02739	ROK2500LH-1
Z3	0955-0743	1	U-WAVE MIXER 3 GHZ MAX	02739	ROK2500LH-1

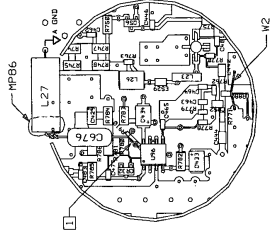
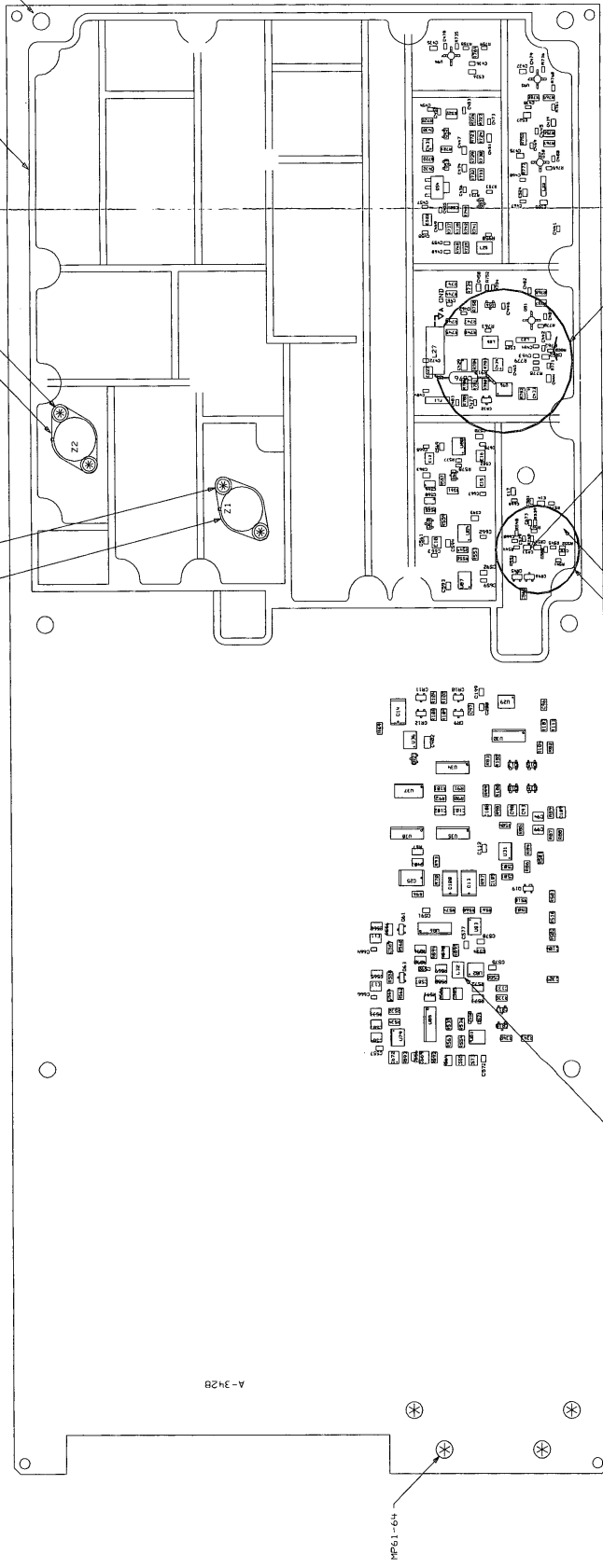
**Indicates factory-selected value*

DETAIL D

SCALE: NONE



- SOLDER WIRE AS SHOWN - LOCATION AND LENGTH OF THE WIRE IS CRITICAL TO BOARD FUNCTION - SEVERAL FACTORS ARE KEY:
- 1) WIRE MUST BE STRAIGHT
 - 2) WIRE LENGTH MUST BE ±.020
 - 3) WIRE MUST BE PLACED DIRECTLY ON PADS WHERE THE INDICATORS WERE LOCATED. SOLDER SHOULD NOT OVERFLOW.
 - 4) SOLDER SHOULD NOT OVERFLOW.

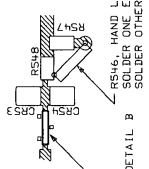


DETAIL F

- SCALE: NONE
- 1) CUT TRACE BETWEEN U96 (PIN 7) AND U97. SOLDER UNDER SILICON ADHESIVE UNDER L27. KEEP SOLDER JOINT OF C676 AND L27 IN THE AIR.

DETAIL A

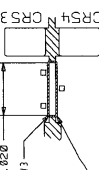
SCALE: NONE



- SOLDER WIRE AS SHOWN - LOCATION AND LENGTH AND SOLDER FILLET OF THE WIRE IS CRITICAL TO BOARD FUNCTION - SEVERAL FACTORS ARE KEY:
- 1) WIRE LENGTH MUST BE ±.020
 - 2) WIRE MUST BE PLACED DIRECTLY ON TRACE
 - 3) SOLDER JOINT MUST BE CONTINUOUS ALONG LENGTH OF THE WIRE OVER ITS COMPLETE LENGTH
 - 4) SOLDER SHOULD NOT FLOW TO ADJACENT ISLANDS

DETAIL B

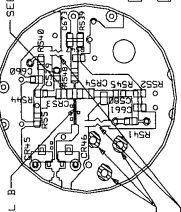
SCALE: NONE



- SOLDER WIRE AS SHOWN - LOCATION AND LENGTH AND SOLDER FILLET OF THE WIRE IS CRITICAL TO BOARD FUNCTION - SEVERAL FACTORS ARE KEY:
- 1) WIRE LENGTH MUST BE ±.020
 - 2) WIRE MUST BE PLACED DIRECTLY ON TRACE
 - 3) SOLDER JOINT MUST BE CONTINUOUS ALONG LENGTH OF THE WIRE OVER ITS COMPLETE LENGTH
 - 4) SOLDER SHOULD NOT FLOW TO ADJACENT ISLANDS

DETAIL C

SCALE: NONE



- UNLESS OTHERWISE SPECIFIED TOLERANCES ARE IN INCHES:
- THIRD ANGLE PROJECTION
- DO NOT SCALE THIS DRAWING
- 1) SCRAPE SOLDER RESIST TO SOLDER THREE (3) VIAS TO GROUND PLANE.
 - 2) CUT THE TWO TRACES SHOWN IN DETAIL C.

DETAIL E

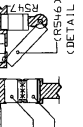
SCALE: NONE



- NOTE: THIS DETAIL IS TO BE INCORPORATED AT FINAL ASSY AS REQUIRED.
- 1) CR53, CR54, R951, AND R952 ARE HAND LOADED.
 - 2) CR53 AND R952 FORM A TRIANGLE WITH THE PWB.
 - 3) CR54 AND R951 FORM A TRIANGLE WITH THE PWB.

DETAIL E

SCALE: NONE



- NOTE: THIS DETAIL IS TO BE INCORPORATED AT FINAL ASSY AS REQUIRED.
- 1) CR53, CR54, R951, AND R952 ARE HAND LOADED.
 - 2) CR53 AND R952 FORM A TRIANGLE WITH THE PWB.
 - 3) CR54 AND R951 FORM A TRIANGLE WITH THE PWB.

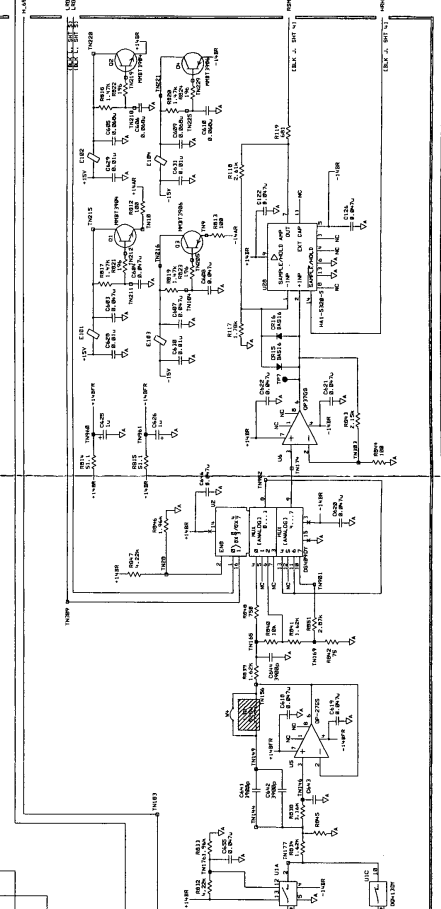
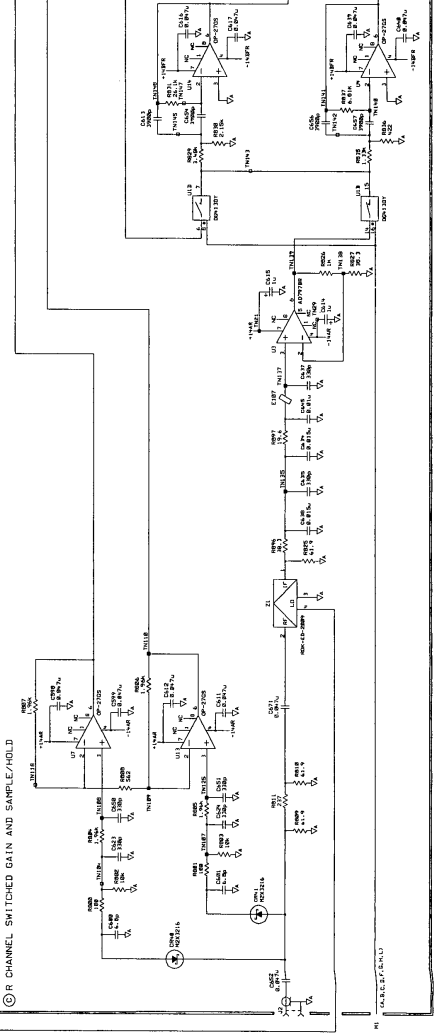
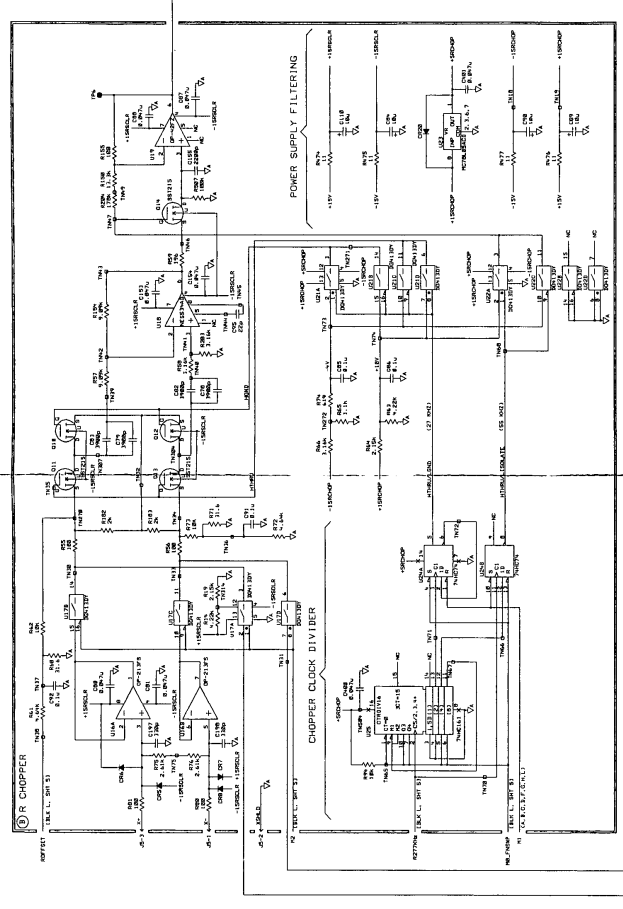
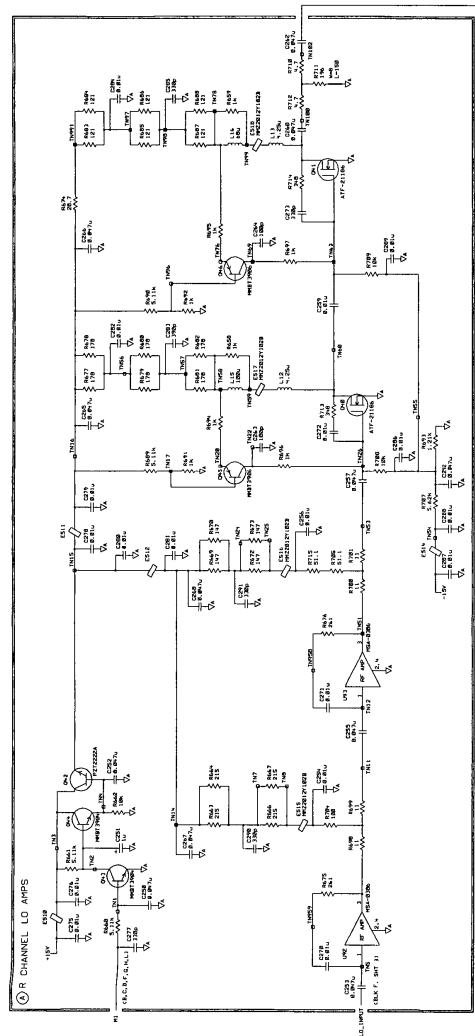
BOTTOM SIDE

THIS DOCUMENT CONTAINS CONFIDENTIAL INFORMATION. IT IS THE PROPERTY OF HP. IT IS TO BE USED ONLY FOR THE PURPOSES AUTHORIZED BY HP. IT IS NOT TO BE REPRODUCED OR TRANSMITTED IN ANY FORM OR BY ANY MEANS, ELECTRONIC OR MECHANICAL, INCLUDING PHOTOCOPYING, RECORDING, OR BY ANY INFORMATION STORAGE AND RETRIEVAL SYSTEM.

REV. NO.	DATE	BY	CHKD. BY	DESCRIPTION
1				ASSEMBLY, PWB RECEIVER

HP PROPERTIES
 13-08713-60009-2
 SHEET 2 OF 2
 D-08713-60009-2

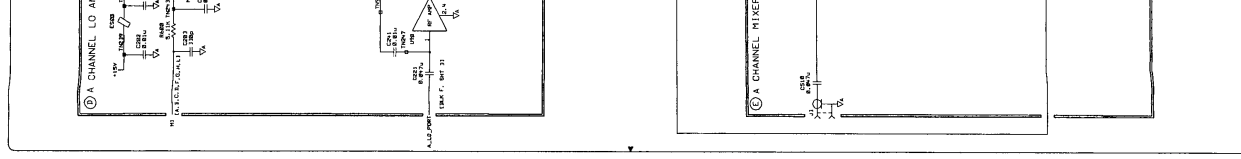
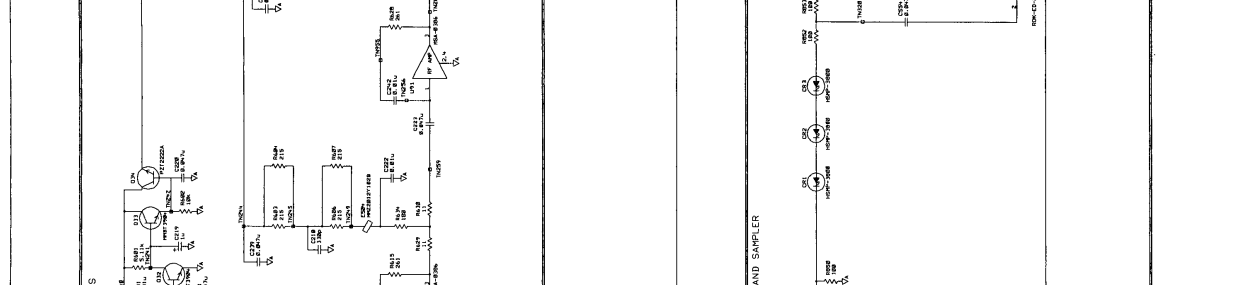
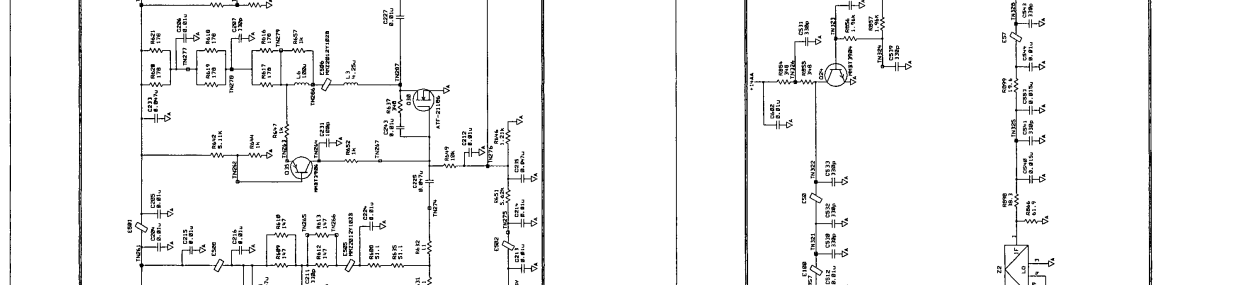
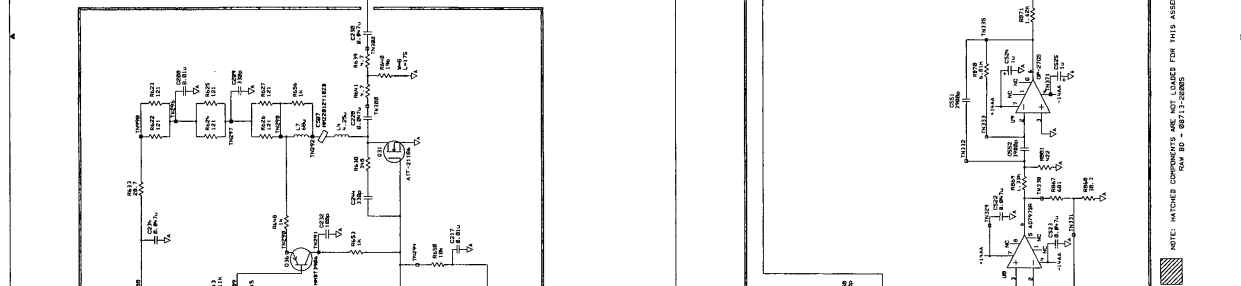
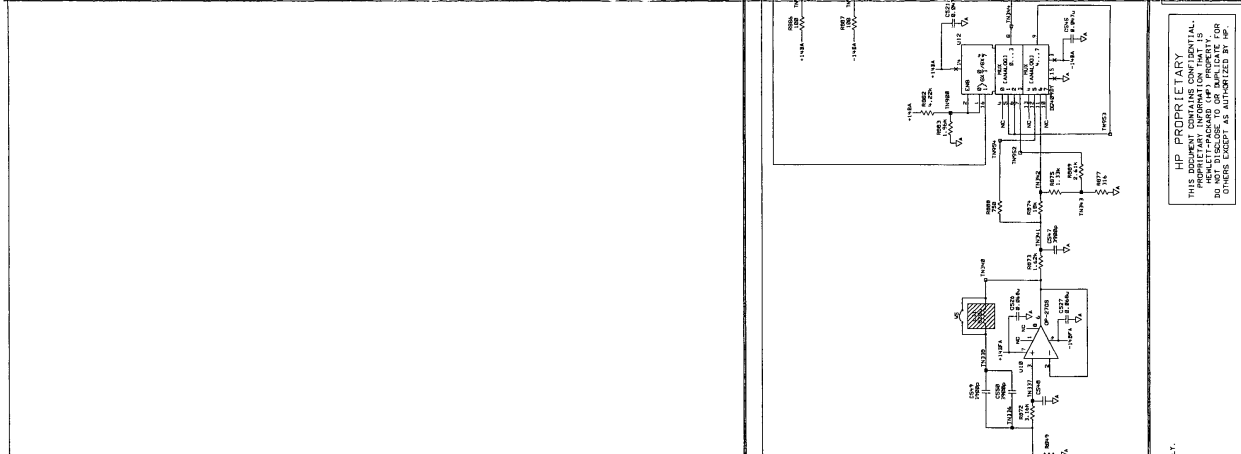
5180 BA3428 REVISIONS
 AS ISSUED PER PCD 53-88899
 CHANGED PER PCD 33-89833 /ZM
 APPROVED
 DATE
 07-27-95
 12-28-95
 D-08713-60009-1



HP PROPRIETARY
 THIS DOCUMENT CONTAINS PROPRIETARY INFORMATION THAT IS UNCLASSIFIED BUT IS NOT TO BE DISCLOSED OR REPRODUCED IN ANY MANNER WITHOUT THE EXPRESS WRITTEN PERMISSION OF HP.
 RELEASE TO: _____ DATE: _____
 DRAWN BY: _____ DATE: _____
 CHECKED BY: _____ DATE: _____
 APPROVED BY: _____ DATE: _____
 Schematic, PWA RECEIVER
 SIG11809
 FILENAME: _____
 SCALE: NONE
 SHEET 1 OF 5
 08713-60009
 D-08713-60009-1
 TITLE

NOTE: MATCHED COMPONENTS ARE NOT LOADED FOR THIS ASSEMBLY.
 RAM 88 - 88713-08885

S 308 BA 3128 REVISION DATE
 A. AS ISSUED PER POB 53-88859 07-52-55
 B. CHANGED PER POB 53-8243 70A 1E-52-55



82011809 SCHEMATIC, PWA
 FILENAME: 82011809
 SHEET 2 OF 5 08713-60009-1
 D-08713-60009-1

DATE: _____
 DRAWN BY: _____
 ENGINEER/CHECKER: _____
 RELEASE TO: _____
 SUPERSEDES: _____

HP PROPRIETARY
 THIS DOCUMENT CONTAINS CONFIDENTIAL INFORMATION.
 REPRODUCTION OF THIS DOCUMENT IS PROHIBITED EXCEPT AS AUTHORIZED BY HP.

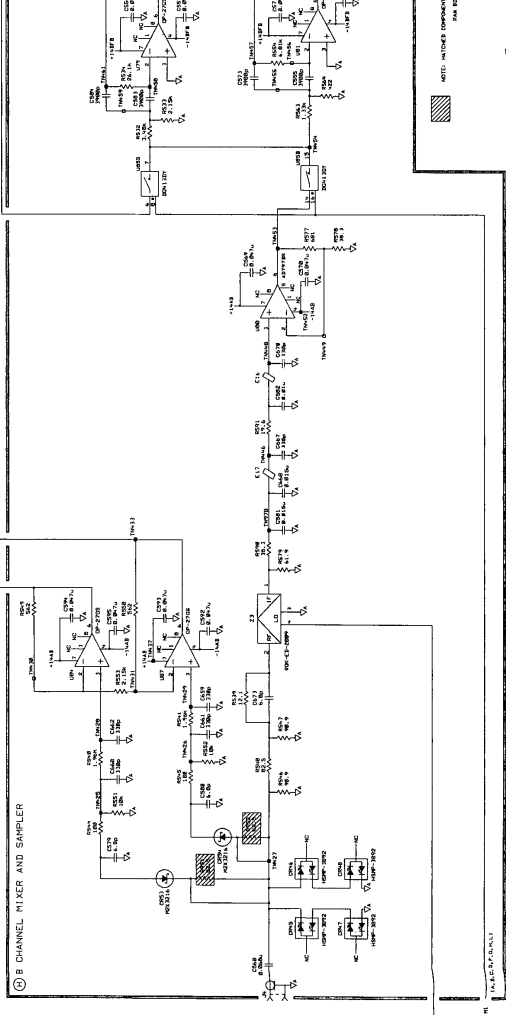
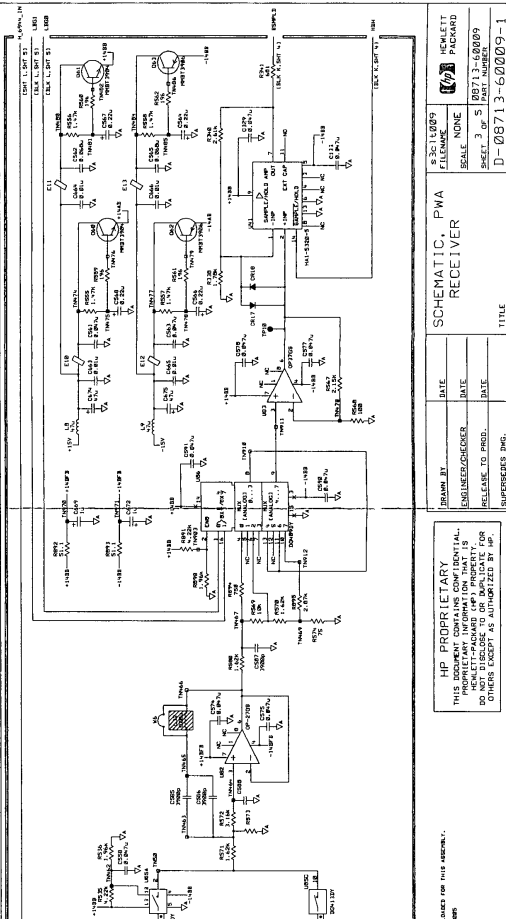
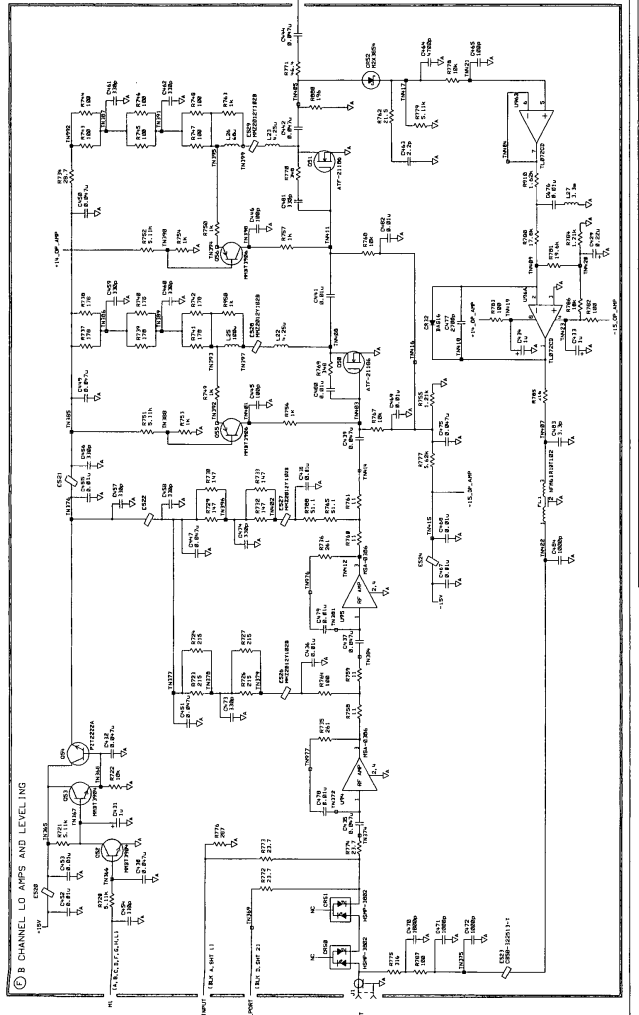
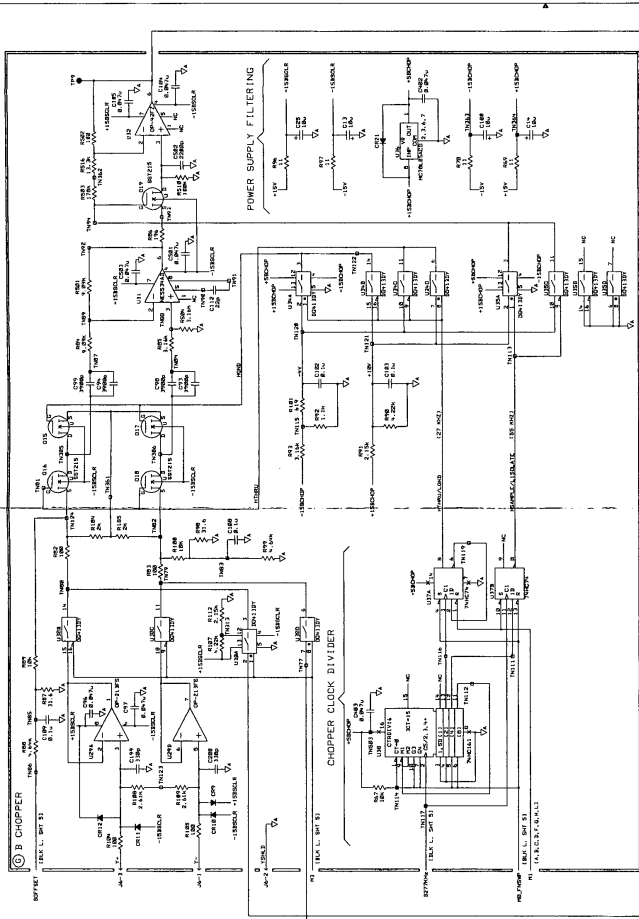
NOTE: MATCHED COMPONENTS ARE NOT LISTED FOR THIS ASSEMBLY.
 QWV 80 - 8073-2000

HP PROPRIETARY
 THIS DOCUMENT CONTAINS CONFIDENTIAL INFORMATION.
 REPRODUCTION OF THIS DOCUMENT IS PROHIBITED EXCEPT AS AUTHORIZED BY HP.

HP PROPRIETARY
 THIS DOCUMENT CONTAINS CONFIDENTIAL INFORMATION.
 REPRODUCTION OF THIS DOCUMENT IS PROHIBITED EXCEPT AS AUTHORIZED BY HP.

S 3008 BA 3428
 REVISIONS
 A. AS ISSUED PER PCD 53-08859
 B. CHANGED PER PCD 53-02437, 701

APPROVED _____ DATE _____
 DESIGNED PER PCD 53-02437, 701



HP PROPRIETARY
 THIS DOCUMENT CONTAINS CONFIDENTIAL
 INFORMATION AND IS THE PROPERTY OF
 HEWLETT-PACKARD COMPANY. IT IS TO BE
 RELEASED TO THE PUBLIC ONLY AS
 AUTHORIZED BY HP.

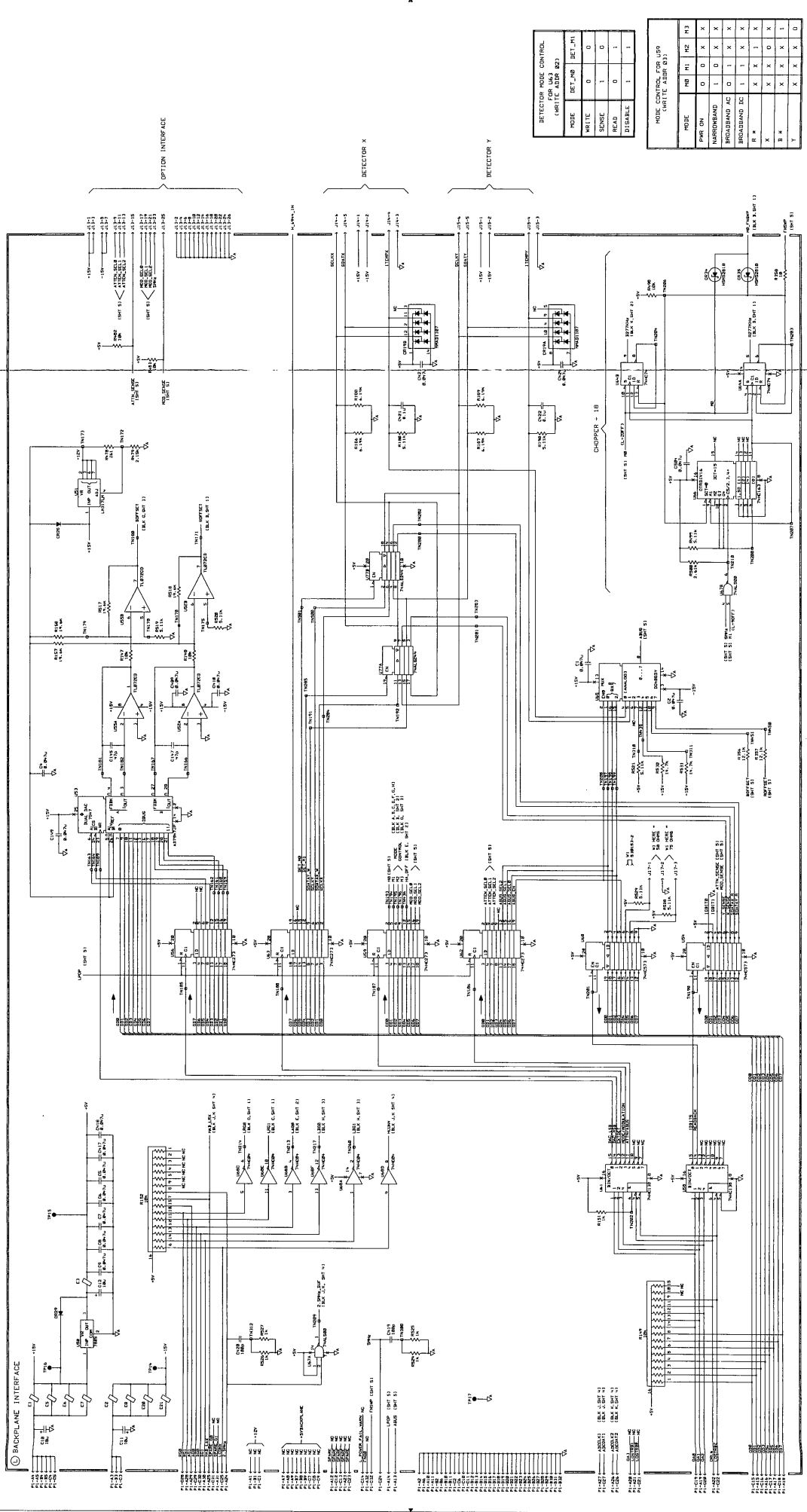
NOTE: UNTESTED COMPONENTS ARE NOT LISTED FOR THIS SCHEMATIC.
 PART NO. S 3011-0000

DATE _____
 ENGINEER/DESIGNER _____
 DATE _____
 RELEASE TO PROD. _____
 SUPERVISOR, INC. _____

S 3011-0009
 FILENAME
 SCALE NONE
 REVISION 3 OF 5 08713-60009
 D-08713-60009-1

HP
 HEWLETT-PACKARD

5380 BA 31428 D-08713-60009-1
 REVISIONS
 A AS ISSUED PER PCD 33-88859 DATE 07-22-85
 B CHANGED PER PCD 33-87243 FOR 12-22-85



DETECTOR MODE CONTROL FOR ULS (WRITE ADDRESS)

MODE	DEF_NO	DEF_H1
WRITE	0	0
SENSE	1	0
READ	0	1
DISABLE	1	1

MODE CONTROL FOR ULS9 (WRITE ADDRESS)

MODE	RD	H1	H2	H3
PMR ON	0	0	X	X
HARDWARD	1	0	X	X
BROADBAND AC	0	1	X	X
BROADBAND DC	1	1	X	X
R R	X	X	0	1
X X	X	X	0	1
Y	X	X	X	0

HP PROPRIETARY
 THIS DOCUMENT IS UNCLASSIFIED
 DATE 08-14-2013 BY 60322 UCBAW/DK/STP
 DO NOT DISCLOSE OR DISTRIBUTE THIS DOCUMENT FOR OTHERS EXCEPT AS AUTHORIZED BY HP.

DRAWN BY: _____ DATE: _____
 ENGINEER/CHECKER: _____ DATE: _____
 RELEASE TO PROD. DATE: _____
 SUPERSEDES DWG. NO. _____

HP PROPRIETARY
 THIS DOCUMENT IS UNCLASSIFIED
 DATE 08-14-2013 BY 60322 UCBAW/DK/STP
 DO NOT DISCLOSE OR DISTRIBUTE THIS DOCUMENT FOR OTHERS EXCEPT AS AUTHORIZED BY HP.

NOTE: HATCHED COMPONENTS ARE NOT LINES FOR THIS SCHEMATIC.
 USE THE DATA SHEET.

SCHEMATIC, PWA RECEIVER
 TITLE
 D-08713-60009-1