

**Component-Level Information Packet**  
**for 08569-60024/ 08569-60026**  
**Comb Generator**

**Copyright © 1991 Hewlett-Packard Company**

**All Rights Reserved.  
Reproduction, adaptation, or translation  
without prior written permission  
is prohibited, except as allowed  
under the copyright laws.**

**HP Document Part Number 08569-90132**

**Printed December 1990  
Printed in USA**

The information contained in this document is subject to change  
without notice.





**HP Part Number 08569-60024  
Comb Generator**

Reference Designation	HP Part Number	C D	Qty	Description	Mfr Code	Mfr Part Number
C1	0160-2437	1	1	CAP-FXD 5000pF 0 V	03746	54-713-033-X5V-502Z
C2	0160-2437	1	1	CAP-FXD 5000pF 0 V	03746	54-713-033-X5V-502Z
C3	0180-0094	4	1	CAP-FXD 100uF 25 V AL-ELCTLT	00493	25T101U8X18M
J1	1250-1157	2	1	CONNECTOR-RF SMA FEM THD-HOLE 50-OHM	02788	2058-5029-00
MP1	2200-0105	4	16	SCREW-MACH 4-40 .312-IN-LG PAN-HD-POZI	01125	
MP4	08569-60026	4	1	BD AY, COMB GEN	28480	08569-60026
MP5	2360-0331	6	1	SCREW-MACH 6-32 .25-IN-LG PAN-HD-POZI	01125	
MP6	0360-0268	6	1	TERMINAL-SLDR LUG LK-MTG FOR-#6-SCR	04880	804-.138
MP7	0470-0013	2		SEALANT LOCTITE 88 GRADE A METHACRYLATE	02136	88 GRADE A
MP13	0890-0324	8		TUBING-FLEX .032-ID TFE .012-WALL	02408	II-TW,FR-1

*\*Indicates factory-selected value*



**HP Part Number 08569-60026  
Comb Generator**

Reference Designation	HP Part Number	C D	Qty	Description	Mfr Code	Mfr Part Number
C1	0160-0127	2	1	CAP-FXD 1uF 50 V	02010	SR835E105MAAH
C2	0160-0127	2	1	CAP-FXD 1uF 50 V	02010	SR835E105MAAH
C3	0121-0451	3	1	CAP-VAR 11pF 1.7pF 175 V AIR	04670	187-0106-028
C4	0160-4793	6	1	CAP-FXD 6.8pF +-7.35% 100 V CER COG	02010	SA102A6R8DAAH
C5	0121-0451	3	1	CAP-VAR 11pF 1.7pF 175 V AIR	04670	187-0106-028
C6	0160-4814	2	1	CAP-FXD 150pF +-5% 100 V CER COG	02010	SA101A151JAAH
C7	0160-4802	8	1	CAP-FXD 82pF +-5% 100 V CER COG	02010	SA102A820JAAH
C8	0160-4786	7	1	CAP-FXD 27pF +-5% 100 V CER COG	02010	SA102A270JAAH
C10	0160-4790	3	1	CAP-FXD 12pF +-5% 100 V CER COG	02010	SA102A120JAAH
C11	0160-4574	1	1	CAP-FXD 1000pF 100 V	02010	SA101C102KAAH
C12	0160-4521	8	1	CAP-FXD 12pF +-5% 200 V CER COG	06352	FD12C0G2D120J
C13	0160-0127	2	1	CAP-FXD 1uF 50 V	02010	SR835E105MAAH
C14	0180-3888	0	1	CAP-FXD 15uF 25 V TA	04200	173D156X9025X
C15	0121-0046	2	1	CAP-VAR 35pF 9pF 200 V	01468	304-322-573
C17	0160-0127	2	1	CAP-FXD 1uF 50 V	02010	SR835E105MAAH
CR1	1901-0050	3	1	DIODE-SWITCHING 80V 200MA 2NS DO-35	03334	BAV10 SELECTED
CR2	1901-0539	3	1	DIODE-SCHOTTKY SM SIG	02062	
CR3	1901-0539	3	1	DIODE-SCHOTTKY SM SIG	02062	
CR4	1901-0539	3	1	DIODE-SCHOTTKY SM SIG	02062	
CR5	1901-0539	3	1	DIODE-SCHOTTKY SM SIG	02062	
E1	9170-0847	3	1	CORE-SHIELDING BEAD	01887	56-590-65/3BMC
L1	9100-2249	6	1	INDUCTOR RF-CH-MLD 150NH +-10% .105D-INX	03273	10M150K
L2	9140-0141	7	1	INDUCTOR RF-CH-MLD 680NH +-10% .105D-INX	03273	10M680K
L3	9100-2254	3	1	INDUCTOR RF-CH-MLD 390NH +-10% .105D-INX	03273	10M390K
L4	9100-2249	6	1	INDUCTOR RF-CH-MLD 150NH +-10% .105D-INX	03273	10M150K
L5	9100-2891	4	1	INDUCTOR RF-CH-MLD 50NH +-10% .105D-INX.	03273	10M050K-1
L6	9100-2247	4	1	INDUCTOR RF-CH-MLD 100NH +-10% .105D-INX	03273	10M100K
MP1	1200-0173	5	2	INSULATOR-XSTR DAP-GL	02210	A-10001 DAP
MP2	1205-0095	0	1	HEAT SINK SGL TO-5/TO-39-CS	02608	2225B
Q1	1854-0247	9	1	TRANSISTOR NPN SI TO-39 PD=1W FT=800MHZ	02037	
Q2	1854-0247	9	1	TRANSISTOR NPN SI TO-39 PD=1W FT=800MHZ	02037	
Q3	1854-0784	9	1	TRANSISTOR NPN 2N3866A SI TO-39 PD=5W FT	02037	2N3866A
R1	0757-0279	0	1	RESISTOR 3.16K +-1% .125W TF TC=0+-100	00746	CRB14 OR CRB25
R2	0698-7229	8	1	RESISTOR 511 +-1% .05W TF TC=0+-100	00746	CRB20
R3	0698-7205	0	1	RESISTOR 51.1 +-1% .05W TF TC=0+-100	00746	CRB20
R4	0698-7219	6	1	RESISTOR 196 +-1% .05W TF TC=0+-100	00746	CRB20
R5	0698-7188	8	1	RESISTOR 10 +-1% .05W TF TC=0+-100	00746	CRB20
R6	0698-7196	8	1	RESISTOR 21.5 +-1% .05W TF TC=0+-100	00746	CRB20
R7	0757-0274	5	1	RESISTOR 1.21K +-1% .125W TF TC=0+-100	00746	CRB14 OR CRB25
R8	0698-7222	1	1	RESISTOR 261 +-1% .05W TF TC=0+-100	00746	CRB20
R9	0698-7188	8	1	RESISTOR 10 +-1% .05W TF TC=0+-100	00746	CRB20
R10	0698-7208	3	1	RESISTOR 68.1 +-1% .05W TF TC=0+-100	00746	CRB20
R11	0698-7188	8	1	RESISTOR 10 +-1% .05W TF TC=0+-100	00746	CRB20
R12	0698-7188	8	1	RESISTOR 10 +-1% .05W TF TC=0+-100	00746	CRB20
R13	0698-3429	2	1	RESISTOR 19.6 1% .125W TF TC=0+-100	00746	CRB14 OR CRB25
R14	0698-3429	2	1	RESISTOR 19.6 1% .125W TF TC=0+-100	00746	CRB14 OR CRB25
R15	0698-7281	2	1	RESISTOR 75K +-2% .05W TF TC=0+-100	02995	5023R

\*Indicates factory-selected value

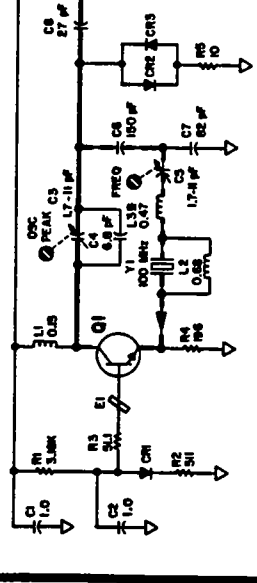
**HP Part Number 08569-60026  
Comb Generator**

Reference Designation	HP Part Number	C D	Qty	Description	Mfr Code	Mfr Part Number
W1	5061-5468	9	1	WIRE ASSEMBLY		28480 5061-5468
W2	5061-5469	0	1	WIRE ASSEMBLY		28480 5061-5469
Y1	0410-0482	3	1	CRYSTAL-QUARTZ 100.000 MHZ	01409	100 MHZ-C251DDD-00

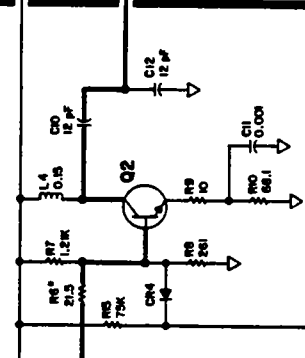
COMB GENERATOR  
08569-60024

08569-60026

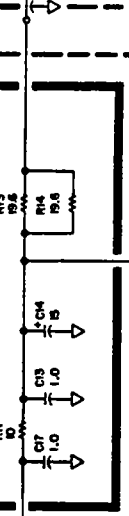
**A** CRYSTAL OSCILLATOR



**B** DRIVER



**C** POWER SUPPLY FILTER



**D** OUTPUT AMPLIFIER

