

# **Component-Level Information Packet**

## **for 5062-6433**

### **Event Counter**

**Copyright © 1991 Hewlett-Packard Company**

**All Rights Reserved.  
Reproduction, adaptation, or translation  
without prior written permission  
is prohibited, except as allowed  
under the copyright laws.**

**HP Document Part Number 5960-2502**

**Printed August 1990  
Printed in USA**

**The information contained in this document is subject to change  
without notice.**





**HP Part Number 5062-6433  
Event Counter**

Reference Designation	HP Part Number	C D	Qty	Description	Mfr Code	Mfr Part Number
C1	0160-5422	0	1	CAP-FXD 0.047uF 50 V	02010	SA205C473MAAH
C2	0160-5422	0	1	CAP-FXD 0.047uF 50 V	02010	SA205C473MAAH
C3	0160-5422	0	1	CAP-FXD 0.047uF 50 V	02010	SA205C473MAAH
C4	0160-5422	0	1	CAP-FXD 0.047uF 50 V	02010	SA205C473MAAH
C5	0160-5422	0	1	CAP-FXD 0.047uF 50 V	02010	SA205C473MAAH
C6	0160-4574	1	1	CAP-FXD 1000pF 100 V	02010	SA101C102KAAH
C7	0160-5348	9	1	CAP-FXD 51pF 100 V	02010	SA102A510JAAH
C8	0160-4574	1	1	CAP-FXD 1000pF 100 V	02010	SA101C102KAAH
C9	0160-5348	9	1	CAP-FXD 51pF 100 V	02010	SA102A510JAAH
C10	0160-5422	0	1	CAP-FXD 0.047uF 50 V	02010	SA205C473MAAH
C11	0160-5422	0	1	CAP-FXD 0.047uF 50 V	02010	SA205C473MAAH
C12	0160-5422	0	1	CAP-FXD 0.047uF 50 V	02010	SA205C473MAAH
C13	0160-5422	0	1	CAP-FXD 0.047uF 50 V	02010	SA205C473MAAH
C14	0180-3847	1	1	CAP-FXD 22uF 25 V TA	04200	299D226X9025DB1
C15	0160-5422	0	1	CAP-FXD 0.047uF 50 V	02010	SA205C473MAAH
C16	0180-3847	1	1	CAP-FXD 22uF 25 V TA	04200	299D226X9025DB1
C17	0160-5422	0	1	CAP-FXD 0.047uF 50 V	02010	SA205C473MAAH
C18	0180-3849	3	1	CAP-FXD 47uF 10 V TA	04200	299D476X9010DB1
C19	0160-5422	0	1	CAP-FXD 0.047uF 50 V	02010	SA205C473MAAH
C20	0180-3844	8	1	CAP-FXD 3.3uF 35 V TA	04200	299D335X9035BB1
C21	0160-5422	0	1	CAP-FXD 0.047uF 50 V	02010	SA205C473MAAH
C22	0160-5422	0	1	CAP-FXD 0.047uF 50 V	02010	SA205C473MAAH
C23	0160-5422	0	1	CAP-FXD 0.047uF 50 V	02010	SA205C473MAAH
C24	0160-4801	7	1	CAP-FXD 100pF 100 V	02010	SA102A101JAAH
C25	0160-4801	7	1	CAP-FXD 100pF 100 V	02010	SA102A101JAAH
C26	0180-3847	1	1	CAP-FXD 22uF 25 V TA	04200	299D226X9025DB1
C27	0180-3847	1	1	CAP-FXD 22uF 25 V TA	04200	299D226X9025DB1
C28	0160-4808	4	1	CAP-FXD 470pF 100 V	02010	SA101A471JAAH
C29	0160-5422	0	1	CAP-FXD 0.047uF 50 V	02010	SA205C473MAAH
C30	0160-5422	0	1	CAP-FXD 0.047uF 50 V	02010	SA205C473MAAH
C31	0160-4574	1	1	CAP-FXD 1000pF 100 V	02010	SA101C102KAAH
C32	0160-5422	0	1	CAP-FXD 0.047uF 50 V	02010	SA205C473MAAH
C33	0160-4832	4	1	CAP-FXD 0.01uF 100 V	02010	SA101C103KAAH
C34	0160-5422	0	1	CAP-FXD 0.047uF 50 V	02010	SA205C473MAAH
C35	0160-5422	0	1	CAP-FXD 0.047uF 50 V	02010	SA205C473MAAH
C36	0160-5422	0	1	CAP-FXD 0.047uF 50 V	02010	SA205C473MAAH
C37	0160-5422	0	1	CAP-FXD 0.047uF 50 V	02010	SA205C473MAAH
C38	0180-3831	3	1	CAP-FXD 10uF 35 V TA	04200	299D106X9035DB1
C39	0160-5422	0	1	CAP-FXD 0.047uF 50 V	02010	SA205C473MAAH
C40	0160-5422	0	1	CAP-FXD 0.047uF 50 V	02010	SA205C473MAAH
C41	0160-5422	0	1	CAP-FXD 0.047uF 50 V	02010	SA205C473MAAH
CR1	1901-0539	3	1	DIODE-SCHOTTKY SM SIG	02062	
CR2	1901-0539	3	1	DIODE-SCHOTTKY SM SIG	02062	
CR3	1901-0539	3	1	DIODE-SCHOTTKY SM SIG	02062	
CR4	1901-0539	3	1	DIODE-SCHOTTKY SM SIG	02062	
CR5	1901-0539	3	1	DIODE-SCHOTTKY SM SIG	02062	
CR8	1901-0050	3	1	DIODE-SWITCHING 80V 200MA 2NS DO-35	00046	1N4150
CR9	1901-0050	3	1	DIODE-SWITCHING 80V 200MA 2NS DO-35	00046	1N4150

\*Indicates factory-selected value

**HP Part Number 5062-6433**  
**Event Counter**

Reference Designation	HP Part Number	C D	Qty	Description	Mfr Code	Mfr Part Number
CR10	1901-0050	3	1	DIODE-SWITCHING 80V 200MA 2NS D0-35	00046	1N4150
CR11	1901-0050	3	1	DIODE-SWITCHING 80V 200MA 2NS D0-35	00046	1N4150
CR12	1901-0050	3	1	DIODE-SWITCHING 80V 200MA 2NS D0-35	00046	1N4150
CR13	1901-0050	3	1	DIODE-SWITCHING 80V 200MA 2NS D0-35	00046	1N4150
J1	1250-0543	8	1	CONNECTOR-RF SM-SNP M PC 50-OHM	05769	51-053-0349-BE8
J2	1250-0543	8	1	CONNECTOR-RF SM-SNP M PC 50-OHM	05769	51-053-0349-BE8
J3	1250-0543	8	1	CONNECTOR-RF SM-SNP M PC 50-OHM	05769	51-053-0349-BE8
L1	9140-0736	6	1	INDUCTOR-FIXED L:200 UH MIN @ 0.35 ADC,1	04200	
L2	9140-0736	6	1	INDUCTOR-FIXED L:200 UH MIN @ 0.35 ADC,1	04200	
L3	9100-0539	3	1	INDUCTOR RF-CH-MLD 10UH +-5% .166D-INX.3	03273	15M102J
L4	9100-3553	7	1	INDUCTOR RF-CH-MLD 3.9UH +-5% .166D-INX.	03273	15M391J
MP2	0403-0630	8	1	EXTR-PC BD BRN NYL .062-IN-BD-THKNS	02123	91-2-BROWN-9
MP3	0403-0630	8	1	EXTR-PC BD BRN NYL .062-IN-BD-THKNS	02123	91-2-BROWN-9
MP4	0403-0026	6	1	PLUG-HOLE BDR-HD FOR .19-D-HOLE NYL	01924	207-120241-03-0101
MP5	7100-1317	5	1	CAN, SQUARE 1.625 INCH	01932	HU 4532-.437 + TABS
P1	1251-8912	3	1	CONN-POST TYPE .100-PIN-SPCG 60-CONT	01380	534204-5
Q1	1855-0555	4	1	TRANSISTOR MOSFET N-CHAN E-MODE SI	02883	VN0300L
Q2	1854-0295	7	1	TRANSISTOR-DUAL NPN PD=400MW	02037	
R1	0757-0442	9	1	RESISTOR 10K +-1% .125W TF TC=0+-100	00746	CRB14 OR CRB25
R2	0698-0083	8	1	RESISTOR 1.96K 1% .125W TF TC=0+-100	00746	CRB14 OR CRB25
R3	0757-0399	5	1	RESISTOR 82.5 +-1% .125W TF TC=0+-100	00746	CRB14 OR CRB25
R4	0757-0280	3	1	RESISTOR 1K +-1% .125W TF TC=0+-100	00746	CRB14 OR CRB25
R5	0757-1094	9	1	RESISTOR 1.47K +-1% .125W TF TC=0+-100	00746	CRB14 OR CRB25
R6	0698-0083	8	1	RESISTOR 1.96K 1% .125W TF TC=0+-100	00746	CRB14 OR CRB25
R7	0757-0399	5	1	RESISTOR 82.5 +-1% .125W TF TC=0+-100	00746	CRB14 OR CRB25
R8	0757-0280	3	1	RESISTOR 1K +-1% .125W TF TC=0+-100	00746	CRB14 OR CRB25
R9	0757-0438	3	1	RESISTOR 5.11K +-1% .125W TF TC=0+-100	00746	CRB14 OR CRB25
R10	0757-1094	9	1	RESISTOR 1.47K +-1% .125W TF TC=0+-100	00746	CRB14 OR CRB25
R11	0757-1094	9	1	RESISTOR 1.47K +-1% .125W TF TC=0+-100	00746	CRB14 OR CRB25
R12	0698-6360	6	1	RESISTOR 10K +-0.1% .125W TF TC=0+-25	00746	CRB14 OR CRB25
R13	0698-6360	6	1	RESISTOR 10K +-0.1% .125W TF TC=0+-25	00746	CRB14 OR CRB25
R14	0698-6630	3	1	RESISTOR 20K +-0.1% .125W TF TC=0+-25	00746	CRB14 OR CRB25
R15	0757-0814	9	1	RESISTOR 511 +-1% .5W TF TC=0+-100	01074	H2
R16	0698-8827	4	1	RESISTOR 1M +-1% .125W TF TC=0+-100	00746	CRB14 OR CRB25
R17	0757-1094	9	1	RESISTOR 1.47K +-1% .125W TF TC=0+-100	00746	CRB14 OR CRB25
R18	0757-1094	9	1	RESISTOR 1.47K +-1% .125W TF TC=0+-100	00746	CRB14 OR CRB25
R19	2100-4184	5	1	RESISTOR-TRMR 10K 10% TKF TOP-ADJ 1-TRN	03744	3329H-EG9-103
R20	0757-0401	0	1	RESISTOR 100 +-1% .125W TF TC=0+-100	00746	CRB14 OR CRB25
R21	2100-4184	5	1	RESISTOR-TRMR 10K 10% TKF TOP-ADJ 1-TRN	03744	3329H-EG9-103
R22	0757-0401	0	1	RESISTOR 100 +-1% .125W TF TC=0+-100	00746	CRB14 OR CRB25
R23	0698-6630	3	1	RESISTOR 20K +-0.1% .125W TF TC=0+-25	00746	CRB14 OR CRB25
R24	0698-6630	3	1	RESISTOR 20K +-0.1% .125W TF TC=0+-25	00746	CRB14 OR CRB25
R25	0698-6624	5	1	RESISTOR 2K +-0.1% .125W TF TC=0+-25	00746	CRB14 OR CRB25
R26	0698-6377	5	1	RESISTOR 200 +-0.1% .125W TF TC=0+-25	00746	CRB14 OR CRB25
R27	0698-6364	0	1	RESISTOR 50 +-0.1% .125W TF TC=0+-25	00746	CRB14 OR CRB25
R28	0698-6355	9	1	RESISTOR 400 +-0.1% .125W TF TC=0+-25	00746	CRB14 OR CRB25
R29	0698-6377	5	1	RESISTOR 200 +-0.1% .125W TF TC=0+-25	00746	CRB14 OR CRB25

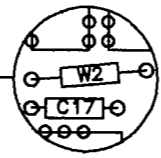
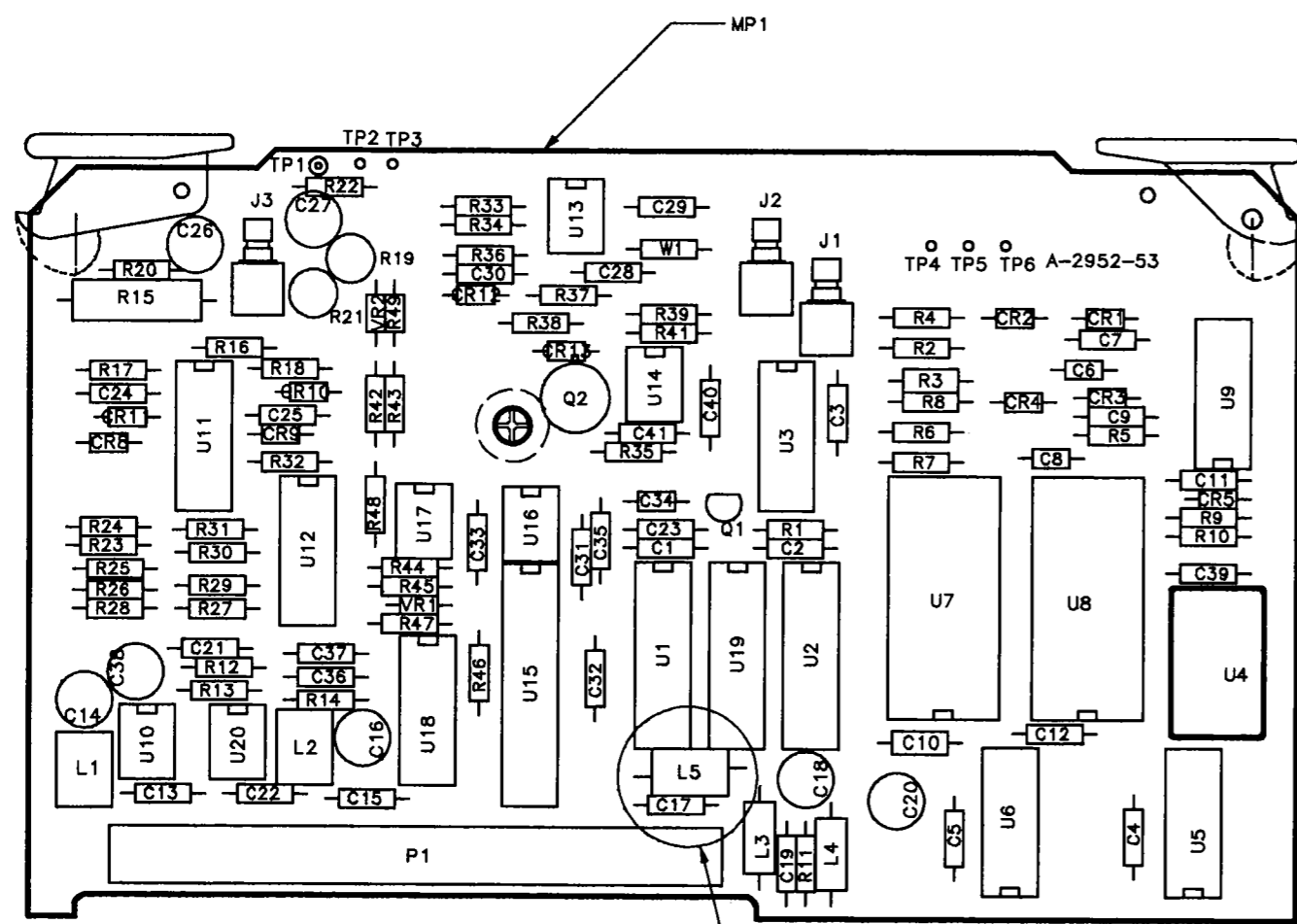
**HP Part Number 5062-6433  
Event Counter**

Reference Designation	HP Part Number	C D	Qty	Description	Mfr Code	Mfr Part Number
R30	0698-6624	5	1	RESISTOR 2K +-0.1% .125W TF TC=0+-25	00746	CRB14 OR CRB25
R31	0698-6630	3	1	RESISTOR 20K +-0.1% .125W TF TC=0+-25	00746	CRB14 OR CRB25
R32	0698-6630	3	1	RESISTOR 20K +-0.1% .125W TF TC=0+-25	00746	CRB14 OR CRB25
R33	0698-6624	5	1	RESISTOR 2K +-0.1% .125W TF TC=0+-25	00746	CRB14 OR CRB25
R34	0698-0084	9	1	RESISTOR 2.15K 1% .125W TF TC=0+-100	00746	CRB14 OR CRB25
R35	0698-3430	5	1	RESISTOR 21.5 1% .125W TF TC=0+-100	00746	CRB14 OR CRB25
R36	0698-3430	5	1	RESISTOR 21.5 1% .125W TF TC=0+-100	00746	CRB14 OR CRB25
R37	0757-0200	7	1	RESISTOR 5.62K +-1% .125W TF TC=0+-100	00746	CRB14 OR CRB25
R38	0699-0388	8	1	RESISTOR 500K +-0.1% .125W TF TC=0+-50	01074	H8
R39	0698-6317	3	1	RESISTOR 500 +-0.1% .125W TF TC=0+-25	00746	CRB14 OR CRB25
R41	0698-6360	6	1	RESISTOR 10K +-0.1% .125W TF TC=0+-25	00746	CRB14 OR CRB25
R42	0698-6320	8	1	RESISTOR 5K +-0.1% .125W TF TC=0+-25	00746	CRB14 OR CRB25
R43	0698-6619	8	1	RESISTOR 15K +-0.1% .125W TF TC=0+-25	00746	CRB14 OR CRB25
R44	0698-6630	3	1	RESISTOR 20K +-0.1% .125W TF TC=0+-25	00746	CRB14 OR CRB25
R45	0698-6360	6	1	RESISTOR 10K +-0.1% .125W TF TC=0+-25	00746	CRB14 OR CRB25
R46	0699-1313	1	1	RESISTOR 14K +-0.1% .125W TF TC=0+-25	00746	CRB14/CRB25
R47	0698-6320	8	1	RESISTOR 5K +-0.1% .125W TF TC=0+-25	00746	CRB14 OR CRB25
R48	0698-6360	6	1	RESISTOR 10K +-0.1% .125W TF TC=0+-25	00746	CRB14 OR CRB25
R49	0698-7236	7	1	RESISTOR 1K +-1% .05W TF TC=0+-100	00746	CRB20
TP1	0360-0077	5	1	TERMINAL-STUD SGL-TUR SWGFRM-MTG	01461	1601-HP
TP2	0360-1682	0	1	TERMINAL-STUD SGL-TUR PRESS-MTG	05364	14758-8
TP3	0360-1682	0	1	TERMINAL-STUD SGL-TUR PRESS-MTG	05364	14758-8
TP4	0360-1682	0	1	TERMINAL-STUD SGL-TUR PRESS-MTG	05364	14758-8
TP5	0360-1682	0	1	TERMINAL-STUD SGL-TUR PRESS-MTG	05364	14758-8
TP6	0360-1682	0	1	TERMINAL-STUD SGL-TUR PRESS-MTG	05364	14758-8
U1	08590-80105	9	1	PAL, PROGRAMMED	28480	08590-80105
U2	1820-3789	9	1	IC FF CMOS/74HC D-TYPE POS-EDGE-TRIG COM	02037	MC74HC574N
U3	1820-3079	0	1	IC DCDR CMOS/74HC BIN 3-TO-8-LINE	02037	MC74HC138N
U4	1813-0174	5	1	CLOCK-OSCILLATOR-XTAL 4-MHZ 0.01%	02483	MX040-2
U5	1820-4677	6	1	IC CNTR CMOS/74HC DECD ASYNCHRO DUAL 4-B	01698	SN74HC490N
U6	1820-4677	6	1	IC CNTR CMOS/74HC DECD ASYNCHRO DUAL 4-B	01698	SN74HC490N
U7	1820-5602	9	1	IC-PROGRAMMABLE INTERVAL TIMER,DC-10MHZ	03811	P82C54-2
U8	1820-5602	9	1	IC-PROGRAMMABLE INTERVAL TIMER,DC-10MHZ	03811	P82C54-2
U9	1820-4242	1	1	IC SCHMITT-TRIG CMOS/74HCT INV HEX	02910	74HCT14N
U10	1826-1514	6	1	IC V RGLTR-V-REF-FXD 9.95/10.05V 8-DIP-P	10858	LT1021BCN8-10
U11	1826-1559	9	1	IC INSTM AMPL PRGMBL 16-DIP-P PKG	03285	AD625JN
U12	1826-0610	1	1	ANALOG MULTIPLEXER 4 CHNL 16 -CERDIP	02180	MUX-24FQ
U13	1826-1049	2	1	IC OP AMP PRCN 8-DIP-C PKG	02180	OP-27GZ
U14	1826-1049	2	1	IC OP AMP PRCN 8-DIP-C PKG	02180	OP-27GZ
U15	1826-1933	3	1	D/A 12-BIT 24-PLASTIC CMOS	03285	AD7547KN
U16	1826-1436	1	1	IC OP AMP PRCN DUAL 8-DIP-C PKG	10858	LT1013ACJ8
U17	1826-1436	1	1	IC OP AMP PRCN DUAL 8-DIP-C PKG	10858	LT1013ACJ8
U18	1826-0610	1	1	ANALOG MULTIPLEXER 4 CHNL 16 -CERDIP	02180	MUX-24FQ
U19	1820-3789	9	1	IC FF CMOS/74HC D-TYPE POS-EDGE-TRIG COM	02037	MC74HC574N
U20	1826-1048	1	1	IC OP AMP PRCN 8-DIP-C PKG	02180	OP-07CZ
VR1	1902-0953	7	1	DIODE-ZNR 6.2V 5% DO-35 PD=.4W TC=+.053%	02037	
VR2	1902-0953	7	1	DIODE-ZNR 6.2V 5% DO-35 PD=.4W TC=+.053%	02037	
W1	8159-0005	0	1	RESISTOR-ZERO OHMS 22 AWG LEAD DIA	01339	L-2007-1
W2	8159-0005	0	1	RESISTOR-ZERO OHMS 22 AWG LEAD DIA	01339	L-2007-1

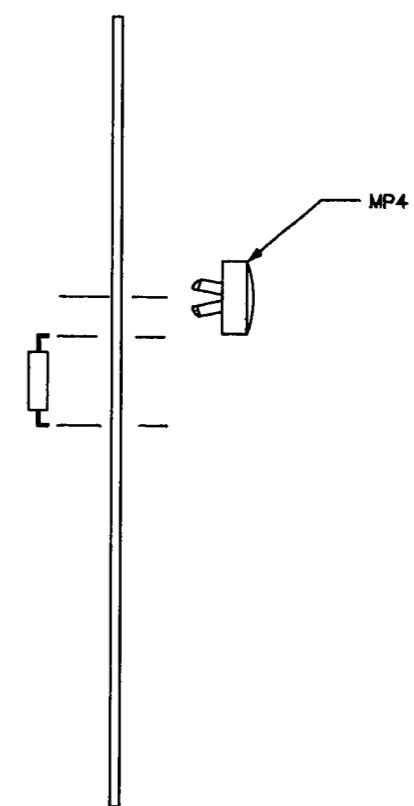
\*Indicates factory-selected value



SYM	REVISIONS	APPROVED	DATE
A			



REMOVE L5 AND REPLACE WITH W2, USING L5 MOUNTING HOLES



HP PROPRIETARY  
 THIS DOCUMENT CONTAINS CONFIDENTIAL PROPRIETARY INFORMATION THAT IS HEWLETT-PACKARD (HP) PROPERTY. DO NOT DISCLOSE TO OR DUPLICATE FOR OTHERS EXCEPT AS AUTHORIZED BY HP.

SEE MATERIAL LIST 5062-6433

UNLESS OTHERWISE SPECIFIED, DIMENSIONS ARE IN INCHES.	DRAWN BY	DATE	BD ASSEMBLY-EVENT COUNTER	
	ENGINEER/CHECKER			
TOLERANCES: XX.XXX (0.015)	RELEASED TO PROD.		TITLE	PART NUMBER 5062-6433
SEE CORP. STD. 808	SUPERSEDES DWG.		NONE SCALE	1 of 1 D-5062-6433-2

